

CA[®] Common Services for OpenVMS

Integration Guide

r3



Computer Associates®

This documentation and related computer software program (hereinafter referred to as the "Documentation") is for the end user's informational purposes only and is subject to change or withdrawal by Computer Associates International, Inc. ("CA") at any time.

This documentation may not be copied, transferred, reproduced, disclosed or duplicated, in whole or in part, without the prior written consent of CA. This documentation is proprietary information of CA and protected by the copyright laws of the United States and international treaties.

Notwithstanding the foregoing, licensed users may print a reasonable number of copies of this documentation for their own internal use, provided that all CA copyright notices and legends are affixed to each reproduced copy. Only authorized employees, consultants, or agents of the user who are bound by the confidentiality provisions of the license for the software are permitted to have access to such copies.

This right to print copies is limited to the period during which the license for the product remains in full force and effect. Should the license terminate for any reason, it shall be the user's responsibility to return to CA the reproduced copies or to certify to CA that same have been destroyed.

To the extent permitted by applicable law, CA provides this documentation "as is" without warranty of any kind, including without limitation, any implied warranties of merchantability, fitness for a particular purpose or noninfringement. In no event will CA be liable to the end user or any third party for any loss or damage, direct or indirect, from the use of this documentation, including without limitation, lost profits, business interruption, goodwill, or lost data, even if CA is expressly advised of such loss or damage.

The use of any product referenced in this documentation and this documentation is governed by the end user's applicable license agreement.

The manufacturer of this documentation is Computer Associates International, Inc.

Provided with "Restricted Rights" as set forth in 48 C.F.R. Section 12.212, 48 C.F.R. Sections 52.227-19(c)(1) and (2) or DFARS Section 252.227-7013(c)(1)(ii) or applicable successor provisions.

© 2005 Computer Associates International, Inc.

All trademarks, trade names, service marks, and logos referenced herein belong to their respective companies.

Contents

Chapter 1: Managing Your OpenVMS eBusiness Infrastructure

Unicenter Management Solutions for OpenVMS	1-2
Unicenter NSM Options for OpenVMS	1-3
The Purpose of this Guide	1-4
CA Services: Enabling Solutions Through Experience	1-4
CA Education Services	1-5
Computer Associates: The Software That Manages eBusiness	1-5
For More Information	1-6

Chapter 2: CA Common Services Delivers It All!

Understanding CCS	2-1
Enterprise Discovery	2-3
WorldView	2-4
2D Map	2-5
3D Map	2-6
ObjectView	2-7
Class Specification	2-8
Class Editor	2-9
The Billboard	2-10
Dynamic Business Process Views	2-10
Common Object Repository	2-10
Unicenter Explorer	2-11
Repository Import/Export (TRIX)	2-12
Global Catalog	2-12
Report Explorer	2-12
Virus Scan	2-12
Enterprise Managers	2-12
ManagedPC	2-13

Chapter 3: OpenVMS Solutions

Architecture	3-1
CA Common Services for OpenVMS on Windows	3-2

Installation	3-5
CA Common Services for OpenVMS on OpenVMS	3-6
Installation	3-7

Chapter 4: Starting and Stopping CA Common Services

Appendix A: Using CCS Communications Utilities

Defining a Foreign Symbol	A-1
Using CAPOLY\$CASEND	A-2
Using CAPOLY\$TRAP	A-2

Appendix B: Using Performance Cubes

Overview	B-1
PROCESS Data Items	B-3
DISK Data Items	B-4
MAGTAPE Data Items	B-5
COMM Data Items	B-5
CPU Data Items	B-5
HOTFILE Data Items	B-6
CONFIG Data Items	B-6
SYSTEM Data Items	B-7

Appendix C: SNMP Traps

Message Records	C-1
Unicenter TNG Console Manager Startup Message	C-1
Unicenter TNG Console Manager Event Daemon Startup Message	C-1
Unicenter TNG Console Manager Startup Failure Message	C-2
Unicenter TNG Console Manager Shutdown Success Message	C-2
Unicenter TNG Console Manager Event Daemon Shutdown	C-2
CommandIT UNIX Startup	C-2
CommandIT UNIX Startup Failure Message	C-3
CommandIT UNIX Shutdown	C-3
Unicenter TNG Performance Agent Startup	C-3
Unicenter TNG Performance Cube Startup	C-3
Unicenter TNG Performance Manager Startup	C-3
Unicenter TNG Performance Failure Message	C-4

Unicenter TNG Performance Agent Shutdown	C-4
Unicenter TNG Performance Cube Shutdown	C-4
Unicenter TNG Performance Manager Shutdown	C-4
Unicenter TNG Workload Jobflow Daemon Startup	C-4
Unicenter TNG Workload Scheduler Manager Startup	C-5
Unicenter TNG Workload Scheduler Agent Startup	C-5
Unicenter TNG Workload Event Daemon Startup	C-5
Unicenter TNG Workload Agent Startup	C-5
Unicenter TNG Workload Manager Failure Message	C-6
Unicenter TNG Workload Jobflow Daemon Failure Startup	C-6
Unicenter TNG Workload Jobflow Daemon Shutdown Message	C-6
Unicenter TNG Workload Scheduler Manager Shutdown Message	C-6
Unicenter TNG Workload Scheduler Agent Shutdown Message	C-6
Unicenter TNG Workload Event Daemon Shutdown Message	C-7
Unicenter TNG Workload Agent Shutdown Message	C-7
Workload Manager Event Message	C-7
Unicenter TNG OpenVMS System Monitor Success Message	C-7
Unicenter TNG OpenVMS System Monitor Event Daemon Success Message	C-8
Unicenter TNG OpenVMS System Monitor Failure Message	C-8
Unicenter TNG OpenVMS System Monitor Shutdown Message	C-8
Unicenter TNG OpenVMS System Monitor Event Daemon Shutdown Message	C-8
Unicenter TNG Startup Success Message	C-9
Unicenter TNG ENF Startup Success Message	C-9
Unicenter TNG Message Startup Success Message	C-9
Unicenter TNG File Transfer Startup Success Message	C-9
Unicenter TNG CCI Startup Success Message	C-10
Unicenter TNG Startup Failure Message	C-10
Unicenter TNG Shutdown Message	C-10
Unicenter TNG ENF Shutdown Message	C-10
Unicenter TNG Message Shutdown Message	C-11
Unicenter File Transfer Shutdown Message	C-11
Unicenter TNG CCI Shutdown Message	C-11
OpenVMS OPCOM Event Message CRITICAL	C-11
OpenVMS OPCOM Event Message MAJOR	C-12
OpenVMS OPCOM Event Message MINOR	C-12
OpenVMS OPCOM Event Message WARNING	C-12
OpenVMS OPCOM Event Message CLEAR	C-12
OpenVMS OPCOM Event Message INDETERMINATE	C-13
CommandIT UNIX OPCOM Event Message CRITICAL	C-13
CommandIT UNIX OPCOM Event Message MAJOR	C-13
CommandIT UNIX OPCOM Event Message MINOR	C-13
CommandIT UNIX OPCOM Event Message WARNING	C-13
CommandIT UNIX OPCOM Event Message CLEAR	C-14

CommandIT UNIX OPCOM Event Message INDETERMINATE	C-14
OpenVMS System Monitor Event Message FATAL	C-14
OpenVMS System Monitor Event Message ERROR	C-15
OpenVMS System Monitor Event Message WARNING	C-15
OpenVMS System Monitor Event Message INFORMATION	C-15
OpenVMS System Monitor Event Message SUCCESS	C-15
Unicenter TNG OpenVMS GLOBAL Event Message ERROR	C-16
Unicenter TNG OpenVMS GLOBAL Command ERROR	C-16
Unicenter TNG OpenVMS GLOBAL Command Message	C-16
Unicenter TNG OpenVMS GLOBAL Command Result Text	C-16
Unicenter TNG OpenVMS IVP Command	C-16

Index

Chapter 1: Managing Your OpenVMS eBusiness Infrastructure

Unicenter revolutionizes eBusiness management by delivering intelligent end-to-end management of eBusiness performance and dynamic visualization of the whole environment. Your business is judged by the services you provide. Unicenter ensures that you continually deliver the best possible service to your customers (both internal and external).

Unicenter is your passport to new world eBusiness. It lets you deliver optimal service to your customers by maintaining the health and strength of all the resources that deliver eBusiness services. By extending the reach of traditional Information Technology and Web asset management, Unicenter takes your existing knowledge and information base and your IT management services, to their unlimited potential of Internet magnitude and Internet speed.

OpenVMS is a critical component of the eBusiness infrastructure; the Unicenter solution offers the most comprehensive support in the industry today. The Unicenter family of solutions for OpenVMS is divided into a number of complimentary solutions.

Unicenter Management Solutions for OpenVMS

This family of solutions provides managers and agents for OpenVMS. The technology is based on the original POLYCENTER family of products and enables management of OpenVMS systems from other OpenVMS systems. When you integrate Unicenter Network and Systems Management (Unicenter NSM) with OpenVMS, it gives you the ability to manage your OpenVMS environment from a single point of control. You also gain the ability to leverage many of the advanced features of Unicenter NSM. These features include correlation, Integrated Event Management and Visualization. The family consists of the following products:

Unicenter Console Management for OpenVMS (formerly CommandIT)

Unicenter Console Management for OpenVMS gives you remote access and control of all the consoles in your enterprise from a central location. It can scan console messages for known patterns, send alerts for critical events, and perform all console functions, including remote shutdowns and reboots. With dynamic load balancing and failover capabilities, it eliminates the need to have local resources for routine system management and handles your centralized operational needs around the clock.

Unicenter System Watchdog for OpenVMS (formerly WatchIT)

Unicenter System Watchdog for OpenVMS allows you to keep a watchful eye on your enterprise-wide OpenVMS environment. It enables you to monitor and maintain system availability, reliability and performance. Watchdog's ability to centrally monitor systems, networks, processes and subsystem events and then send alerts indicating events occurred helps you to keep your mission-critical systems healthy and available. Automatic detection and notification helps optimize your operational expenses.

Unicenter Performance Management for OpenVMS (formerly AdviseIT)

Unicenter Performance Management for OpenVMS provides comprehensive performance management. Leveraging over 20 years of development experience, Performance Management evolved from the VAX Performance Advisor (VPA) through DECps, POLYCENTER Performance Advisor, Data Collector, AdviseIT and Unicenter TNG for OpenVMS Performance. This is the industry's premier product!

Unicenter Job Management for OpenVMS (formerly ScheduleIT)

Unicenter Job Management for OpenVMS ensures that all your critical jobs are successfully run on your enterprise-wide systems at the scheduled times and in the desired sequence. This simplifies managing complex interdependent jobs. Enterprise-wide job scheduling, automated job execution, co-ordination of job dependencies, and real-time monitoring of job execution helps you automate your operations and achieve significant increase in productivity.

Unicenter NSM Options for OpenVMS

Unicenter NSM options for OpenVMS are built on Unicenter Agent Common Services, and require a Unicenter NSM Manager on either UNIX or Windows. The options available include:

Unicenter NSM System Monitoring Option for OpenVMS

Unicenter NSM includes an advanced agent architecture that provides lightweight intelligent agents to monitor critical system parameters, resources and applications. The following agents are available:

- **Unicenter NSM System Agent for OpenVMS**

The Unicenter NSM System Agent for OpenVMS provides unparalleled system monitoring capability for both system and cluster-wide resources. The agent monitors resources like CPU, memory, process availability, job and print queues, system parameters and disks. When the agent is deployed on multiple systems within the cluster, the agents can be configured in a High-Availability Mode. This means only one agent monitors cluster-wide resources. Should the system go down, another agent within the cluster takes responsibility for monitoring cluster-wide resources.

- **Unicenter NSM Log Agent for OpenVMS**

The new caiLogA2 agent is specifically designed to monitor the contents of ASCII log files for simple and complex patterns, and to monitor for the existence and non-existence of a file.

Unicenter NSM Database Monitoring Option for OpenVMS

- **Unicenter NSM Oracle Agent for OpenVMS**

The Oracle Agent monitors key RDBMS resources, such as table space utilization, space availability for creating new database tables, and table space fragmentation. Unfortunately, fragmentation of Oracle databases can render large amounts of disk space unusable. To address this issue, the Unicenter NSM Oracle Agent detects levels of fragmentation and alerts Unicenter NSM when thresholds are reached. Because an Oracle database can cause heavy disk I/O, traffic must be balanced across several channels to prevent performance degradation. The Oracle Agent monitors I/O imposed on each disk channel and identifies the percentage of channel capacity dedicated to Oracle I/O in comparison to demands made by other applications. Hot files with the greatest I/O load are identified as potentially requiring load balancing across disks.

- **Unicenter NSM Oracle Rdb Agent for OpenVMS**
The Oracle Rdb Agent monitors key RDBMS resources such as database processes, database data storage I/O, database root storage I/O, database After Image Journal (AIJ) storage I/O, database Recovery Unit Journal (RUJ) storage I/O, database transactions and database records. For each monitored metric, the administrator has the ability to define a set of thresholds which, when reached, generate events to notify the administrator of the change in status. This enables the administrator to take corrective action, before the database user reports the problem.
- **Unicenter Universal Job Management Agent for OpenVMS**
The Unicenter Universal Job Management Agent (UJMA) for OpenVMS lets you manage scheduled tasks on OpenVMS as part of a heterogeneous scheduling solution. UJMA for OpenVMS supports Unicenter NSM Job Management Option and Unicenter AutoSys Job Management running on Windows and Unix. UJMA also supports the Unicenter Job Management solutions on z/OS. For more information on the Managers that UJMA supports, see the *Unicenter Universal Job Management Agent for OpenVMS Getting Started Guide*.

The Purpose of this Guide

By the time you have finished reading this guide, you will have an overview of the scope and usability of this product.

This book is intended for the reader who wants to do the following:

- Understand the features of this product.
- Get an architectural overview of how the OpenVMS solutions integrate into a heterogeneous management solution.
- Integrate this product into a Unicenter NSM Manager or into CA Common Services (CCS).

CA Services: Enabling Solutions Through Experience

When it comes to getting on the information fast track, CA Services can recommend and install a full suite of portal and knowledge management solutions to keep your business moving. Our associates offer the proprietary know-how you need to custom-fit your enterprise for solutions ranging from life cycle management, data warehousing and next-level business intelligence. Our experts will leave you with the technology and knowledge tools to fully collect, exploit and leverage your data resources and applications.

CA Education Services

Computer Associates Global Education Services (CA Education) offerings include instructor-led and computer-based training, product certification programs, third-party education programs, distance learning and software simulation. These services help to expand the knowledge base so companies are better able to use CA's products more efficiently, contributing to their greater success. CA Education has been developed to assist today's technologists in everything from understanding product capabilities, to implementation and quality performance. Because the vast community of education seekers is varied, so too are CA's methods of instruction. CA Education is committed to provide a variety of alternatives to traditional instructor-led training, including synchronous and asynchronous distance learning, as well as Unicenter simulation.

For training that needs to be extended to a wider audience — for a fraction of the cost and logistical hassle of sending everybody away to a class — CA Education offers excellent distance learning options.

Computer Associates: The Software That Manages eBusiness

We are on the verge of a new generation of eBusiness. CA understands the tremendous opportunities and management challenges eBusiness presents. By leveraging existing business infrastructures and adopting new technologies, you can begin to capitalize on these unlimited opportunities. CA provides the technology and the know-how to integrate and manage your computing devices, business processes, applications and data across your entire enterprise. Through industry-leading eBusiness Process Management, eBusiness Information Management, and eBusiness Infrastructure Management offerings, CA delivers the only comprehensive, state-of-the-art solutions, serving all stakeholders in this extended global economy.

For More Information

After walking through this guide, you can refer to the numerous resources available to you for additional information. The CD included with this product contains useful instructional documents that showcase your software as well as detailed explanations about the product's comprehensive, feature-rich components. This product also provides an extensive context-sensitive online help system.

For online technical assistance and a complete list of locations and phone numbers, contact Customer Support at <http://ca.com/supportconnect>. Customer support is available 24 hours a day, 7 days a week.

For telephone assistance, call:

- U.S. and Canada 1-800-645-3042
- International (1) 631-342-4683

Chapter 2: CA Common Services Delivers It All!

The underlying infrastructure for many CA solutions is CA Common Services™ (CCS). Composed of a comprehensive set of management, infrastructure, and visualization services, CCS is the “foundation and glue” that automatically integrates a rich array of CA products into a collective enterprise solution. CCS also provides a single point of integration between CA solutions and user-written applications. Platform support, event management, communications, and visualization are just a few of the many core services available in CCS. An impressive host of functions continually improves the efficiency of your business while reducing resource utilization.

Understanding CCS

CCS is installed quickly and easily as part of your CA product so you do not have to worry about additional installations or difficult deployments. CCS also provides significant resource savings, because only those components that are actually required get installed. The desired components are selected from a “menu” of items in visualization, management, and infrastructure services. CCS offers great flexibility in the selection of suitable components, as indicated by the following partial list of components in the CCS bundle.

CCS Component	Function
Event Management	Management
Common Enterprise Tools	Infrastructure
WorldView 2D Map Interface	Visualization
WorldView 3D Map Interface	Visualization
WorldView Common Services	Infrastructure
Common Communications	Infrastructure
Report Explorer	Visualization
Agent Technology Common Services	Infrastructure
Unicenter Explorer	Visualization
Agent Technology Distributed State Machine	Management
Event Wireless Management	Management

CCS Component	Function
ManagedPC Components	Management

CCS includes runtime modules and provides an SDK for third parties to integrate the runtimes with your CA product and to facilitate the rapid incorporation of specific CA technologies.

- **Runtime Component**—A set of programs and modules that complements the Software Development Kit and is used to provide runtime functionality. The runtime modules are chargeable.
- **Software Development Kit (SDK)**— A component that provides the APIs and utilities required to develop solutions that integrate with your CA product. The SDK offers the opportunity to integrate custom applications with CA architecture, including WorldView, Agent Technology, and Enterprise Management. The SDK provides an extensive set of APIs that lets you manipulate classes and objects in the Common Object Repository, create agents to instrument custom resources, and much more.

Tip: For more information about the Software Development Kit, see the *CA SDK Developer Guide*. Each CA solution has the runtime modules it requires embedded in the product.

Any third-party product that is enhanced with the Software Development Kit can communicate and integrate with any of the CA solutions containing the specific common services (such as Event Management) for which an integration has been performed.

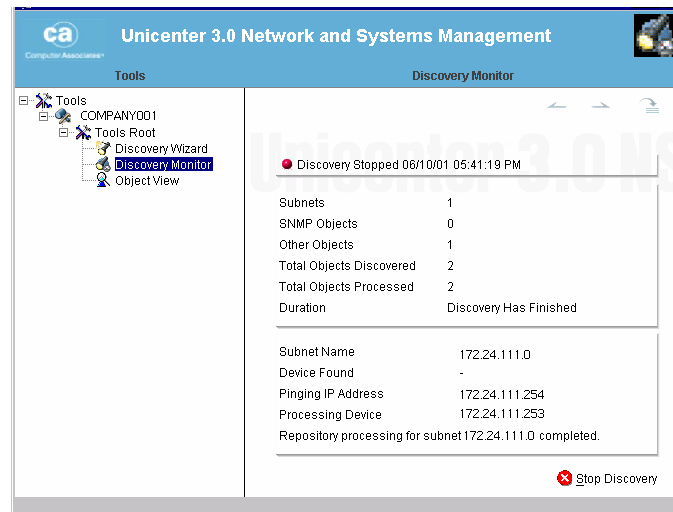
Two typical scenarios in which a vendor or third party can use CCS are:

- **Integration**—Integrate an existing third-party product so that it can communicate with your CA solution.
- **OEM**—Develop a third-party product in which the partner provides added value by embedding CA technology in the product. The embedded technology could be a complete CA solution (such as Unicenter Network and Systems Management) or a CCS runtime component (such as Event Management).

Note: Not all CCS components are available on every platform. Virus Scan, for example, is available only on Windows.

Enterprise Discovery

Use the comprehensive Enterprise Discovery (IP Discovery) feature to easily identify your entire network. Depending on your requirements and the size of your enterprise, you can adjust Enterprise Discovery to run on a single network segment or over the entire enterprise. You can even schedule Enterprise Discovery to run at a certain time on a specific day.



- As Discovery finds computers, servers, routers, applications, and so forth, it creates objects that represent these entities and stores the objects in a database called the Common Object Repository. The Discovery Monitor keeps you apprised of the Discovery process as it searches your networks.
- The discovery of Storage Area Network (SAN) devices is seamless with the rest of the managed devices.
- WorldView presents a dramatic, real-world graphical representation of the discovered objects.

WorldView

Whether your “world” is several machines used for word processing in an office or a global network of PCs, servers, routers, and sophisticated applications and business processes, you can explore it in the Real World Interface, WorldView.

WorldView consists of the 3D Map (with enhanced rendering and animation), 2D Map, and Association Browser. These components offer a complete and authentic view of your business.

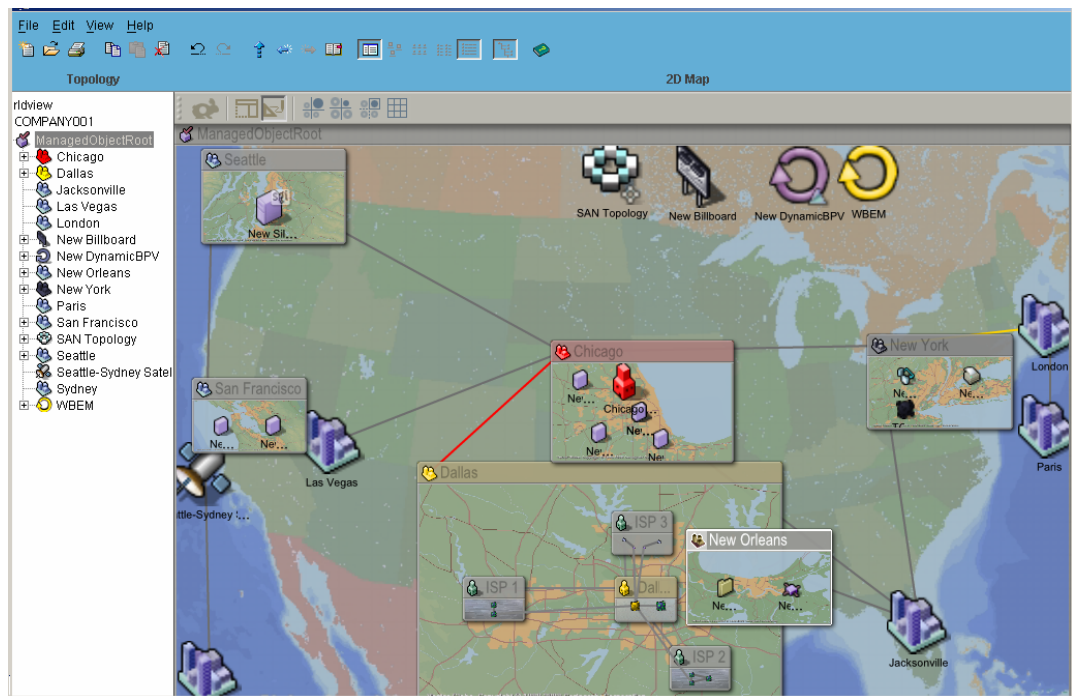
WorldView objects are displayed as bitmaps representing objects in the 2D Map view. The state of an object (normal to critical) is represented using various colors so you can immediately recognize its severity. By default, a red object indicates a critical state while a green object indicates a normal state. Parent objects dissolve into child objects, and the child object size and positioning information remains associated with the parent object. Linked objects carry properties, as with other objects.

Tip: You can instruct the Installation Wizard to place sample data in the WorldView repository (also known as the Common Object Repository). Simply click the Fill Sample Data in Repository check box on the Repository Settings tab of the Database Selection, Creation, and Configuration dialog. The sample data lets you start looking at the various features without discovering your network. However, if you do not discover your network, you cannot manage it.

2D Map

The 2D Map is a powerful user interface that acts as an infrastructure navigator and controller, letting you view any part of your business, at any time, with the click of a button.

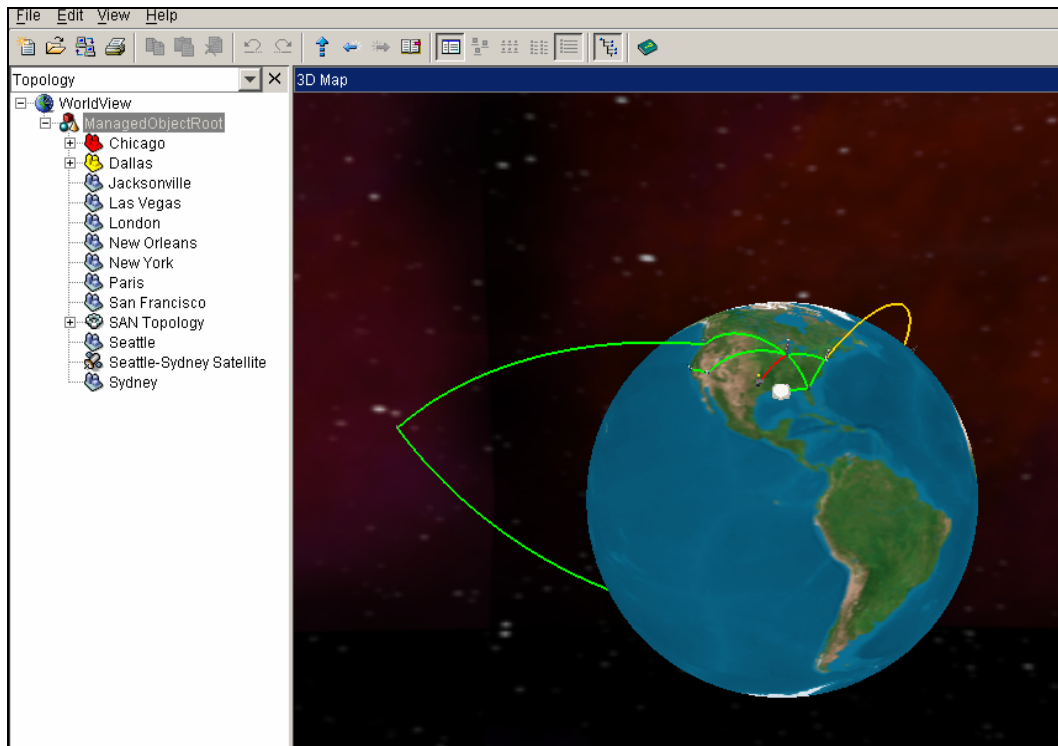
The 2D Map below provides a graphical representation of your IT infrastructure and customized Business Process Views. It offers an overview of the structure of your network using icons to depict your resources. It is all right there on the screen—networks, subnetworks and segments, PCs, servers, routers—everything you need to see!



3D Map

Virtual reality. You have heard of it, now you can experience it. From a single console, you can travel throughout the environment that runs your business without getting on a plane or hailing a cab.

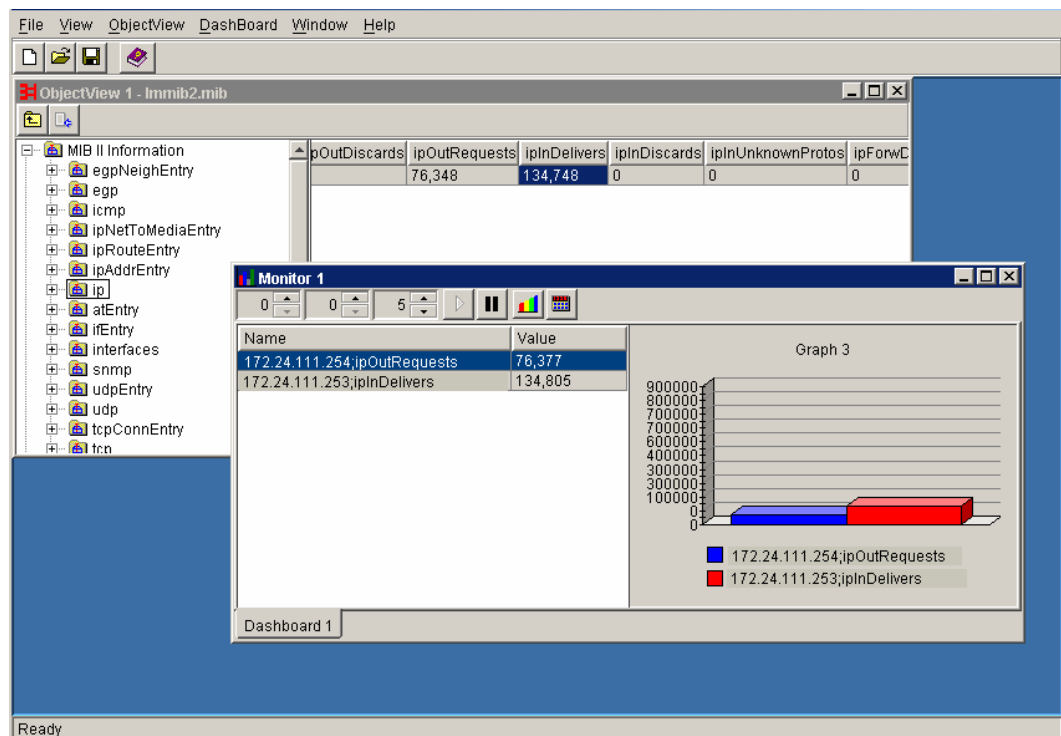
Real time representations of your networks let you view the problem that a machine or application is experiencing, right down to the interface card in a router or a routine in an application.



ObjectView

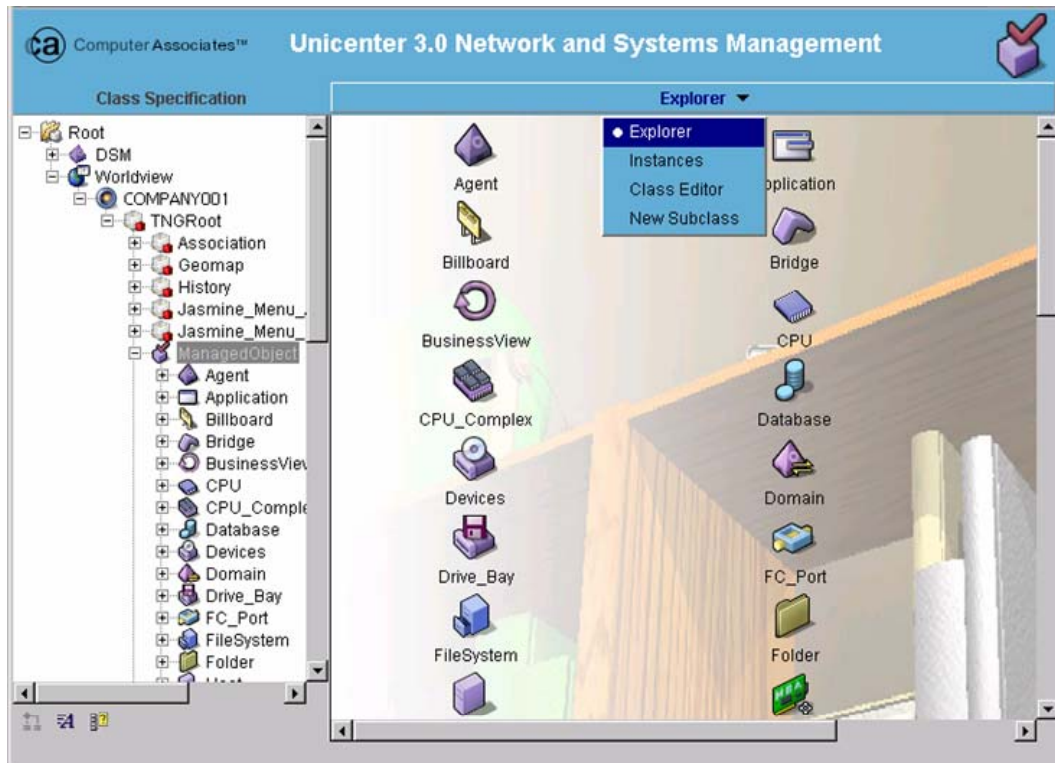
The 2D and 3D Maps provide a complete business overview of the entire organization. ObjectView lets you take a deeper look at each of the objects displayed on the maps. Each resource has Management Information Base (MIB) information—a collection of attributes of the device or the application—such as performance, status, and so on.

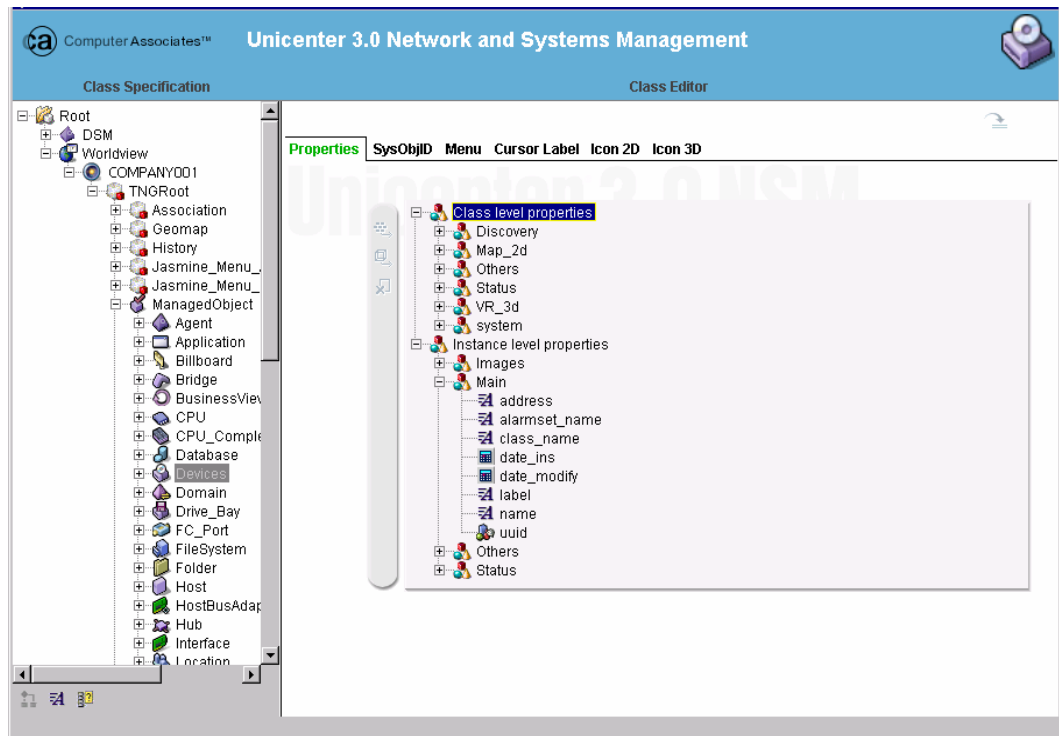
Accessed directly from the 2D Map, 3D Map, or Object Browser, ObjectView displays minute details of the device or application, letting you know the exact status of that resource at any time of day or night. As is the case with other components, this is done from a single console.



Class Specification

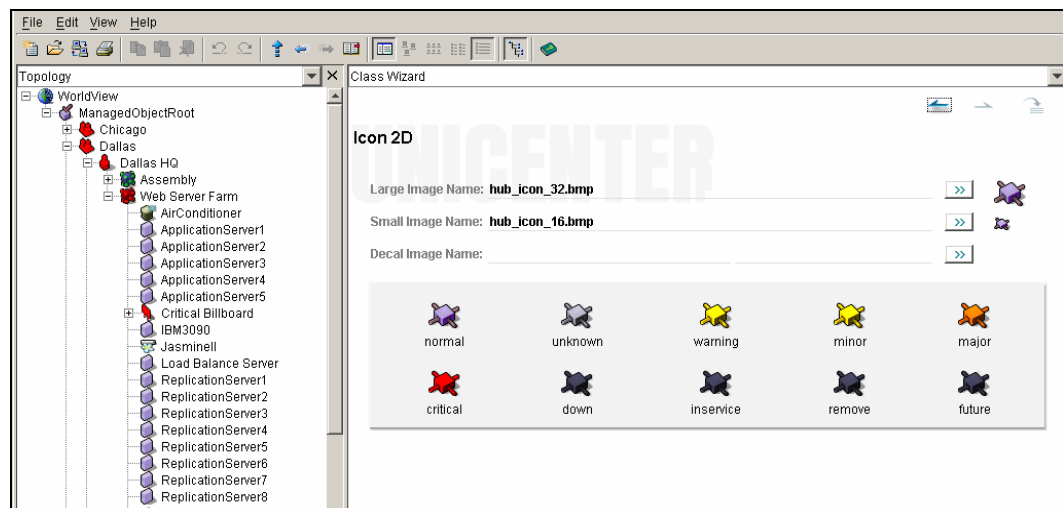
The Class Specification displays all the properties of each class in an easy-to-understand and intuitive manner. The Class Specification lets you view or modify classes as shown in the following examples.





Class Editor

An extensive set of classes is available to you. To meet your business requirements, you may want to modify existing classes or create new ones for your specific objects. The Class Editor is an easy-to-use facility that guides you through the process of modifying existing classes or adding new ones to the Common Object Repository.



The Billboard

The billboard lets you view up-to-date information about objects whose true (not propagated) severity changes. When an object's severity changes, the billboard displays that object only if it is a child of the billboard's siblings (*siblings* are objects at the same level in the topology). Siblings are not included because their changes can be seen at the same level as the billboard. In this way, only truly severe objects are contained in the billboard and allowed to "bubble up" to a particular level, limiting your view to only those objects you need to see. The billboard refreshes with a real-time update of monitored resources just like Dynamic Business Process Views.

You can change the severity level of objects that the billboard contains. By default, the billboard contains Critical objects. If you want to set the severity level lower, for example, to Minor, objects with severities of Minor, Major, and Critical will appear in the billboard.

Dynamic Business Process Views

This facility lets you collect WorldView objects based on a query or set of queries. Based on your query, the system keeps the set of objects contained in the Dynamic Business Process View up to date based on WorldView notifications. If something changes in an object, the system checks whether the change fits the query. If so, it adds the object to the Dynamic Business Process View. If the change no longer fits the query, it is removed from the Dynamic Business Process View. Dynamic Business Process Views are similar to the billboard, letting you scope the query to objects at a level of your choosing in the topology.

To create Dynamic Business Process Views, first choose an object whose children you want to limit your view to in the 2D Map. Then, in Design mode, use the Tool Palette, drag the Dynamic BPV class (Classes, ManagedObject, BusinessView, DynamicBPV) to the 2D Map, and rename it to define the query. To set up a query for this newly created Dynamic Business Process View, right-click on it and choose Viewers, Dynamic BPV Query View.

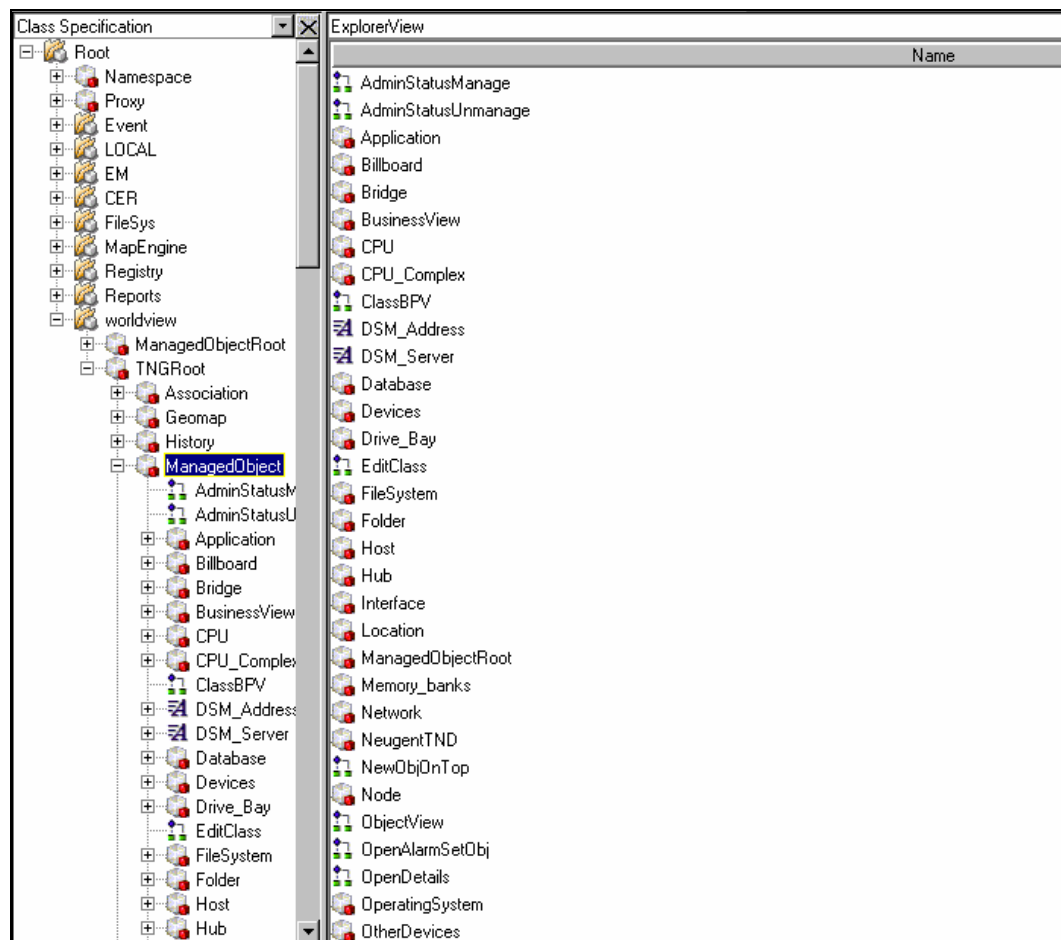
Common Object Repository

The Common Object Repository is the database where all of the objects that represent your business resources are stored. Created automatically during installation, the Common Object Repository ensures that your data is always secure and current. Severity propagation, topology, business views, billboards, and other facilities emanate from the Common Object Repository.

Unicenter Explorer

Unicenter Explorer is the management portal that provides a meaningful, consolidated view of enterprise data. Whether the data source is Agent Technology, Enterprise Management, WorldView, or another application, Unicenter Explorer uses the same navigational trees and rightmost plug-ins for consistent user interaction. Unicenter Explorer provides the flexibility to launch client-side and server-side applications and batch commands as well as client-side Java applications and applets through convenient pop-up menus that are specific to the objects of a particular class. It brings all of the GUIs and the management of your enterprise under one common look-and-feel tool.

The Unicenter Explorer lets you view objects belonging to CCS classes and equips you with notebooks and dialogs to help you maintain your data. You can modify existing objects, create new objects, and reclassify unclassified objects found during Enterprise Discovery. As with all of the product's features and components, Unicenter Explorer simplifies the process of managing your business to save you time, effort, and money.



Repository Import/Export (TRIX)

TRIX is an invaluable tool for any size business. You can use TRIX to populate repositories with objects from other repositories. This means that you can populate a central corporate repository with objects from remote repositories. You always have a complete, current corporate repository, which ensures that you have the most reliable information about the status of your business.

Global Catalog

The Global Catalog is a directory of all installed CA product components. During installation, you select a common device to be used as the Global Catalog and then choose the Global Catalog machine whenever you install a component. The installed component publishes its existence to the Global Catalog.

When the Unicenter Explorer launches, it synchronizes with the Global Catalog to display all CA product components currently installed in your organization. Any Unicenter Explorer that uses the Global Catalog can see all of the deployed components throughout the organization.

Report Explorer

Now that you have all this information, how can you use it to your greatest advantage? The Report Explorer lets you customize, view, and print reports so that the extensive amount of information available to you is presented in the most meaningful format for your particular requirements.

Virus Scan

Virus . . . it can bring any business to its knees. CCS comes to your company's rescue with integrated antivirus software called Virus Scan. Virus Scan runs every day at midnight, but you can also run Virus Scan on demand anytime, day or night. You can specify the type of scan to be performed and the course of action to take if a virus is detected. When Virus Scan detects a virus, it automatically sends a message to the Event Console and Event Log for further action.

Enterprise Managers

Enterprise Managers are a collection of management components that employ a single, easy-to-use graphical user interface—the Event Console—to monitor and administer different events, including SNMP traps, application events, and system events.

ManagedPC

CA delivers the only out-of-the-box, eBusiness management solutions that provide complete cross-platform support for today's heterogeneous business environments. The scalable and open architecture supports any NetPC that adheres to Intel's Wired for Management (WfM) Initiative.

Here is an example of how you might use ManagedPC to streamline desktop and server management in your organization: you are in Dallas at your Unicenter Console, and you know that Windows 2000 Professional needs to be reinstalled on a ManagedPC in your Beijing office.

With a few mouse clicks, you wake up (power up) the ManagedPC. ManagedPC automatically detects that Windows 2000 Professional must be reinstalled and performs the installation for you, flawlessly and seamlessly. Best of all, because of the 12-hour time difference, you do not have any downtime in Beijing—and you are able to handle the installation without any personnel! ManagedPC also supports UNIX servers!

Chapter 3: OpenVMS Solutions

CCS for OpenVMS provides a communications infrastructure for all of the Unicenter solutions running on OpenVMS. CCS for OpenVMS consists of both an OpenVMS component and a Windows Manager component that requires either Unicenter NSM or CCS on Windows. This chapter describes the various components that constitute CCS for OpenVMS.

Architecture

CCS for OpenVMS is based on three key technologies to provide communication between the Unicenter Manager and the Unicenter applications residing on the OpenVMS server:

Events

Delivered to the Unicenter Manager using industry standard SNMP traps

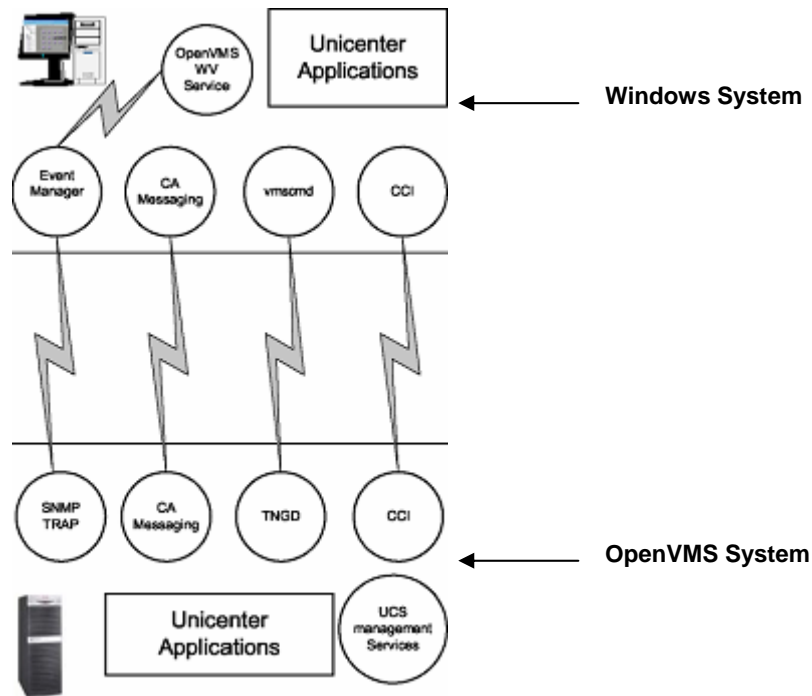
CA Messaging

Transfers performance data from OpenVMS to the Performance Manager running on Windows

CCI

Used for heterogeneous workload scheduling to OpenVMS

Each of the communication technologies is tailored for the type of data it handles.



CA Common Services for OpenVMS on Windows

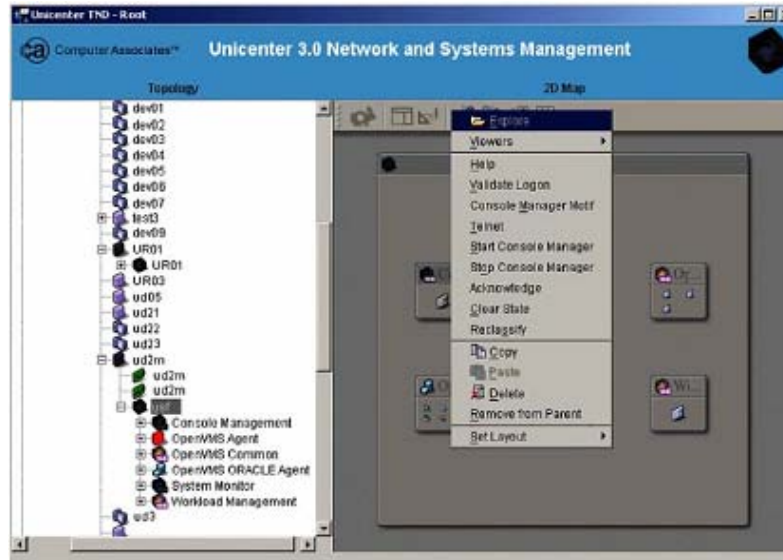
CCS for OpenVMS on Windows is a generic integration layer that extends the capabilities of CCS Manager and Unicenter NSM to manage an OpenVMS infrastructure. By Integrating OpenVMS into your Unicenter enterprise management infrastructure, you can truly benefit from an end-to-end eBusiness enterprise management solution.

The CCS for OpenVMS on Windows provides the following benefits:

Integration into Unicenter Explorer

When you start the Unicenter components on OpenVMS using the CCS for OpenVMS common startup, they inform CCS for OpenVMS on Windows what components are currently installed and running. The components currently running on the given OpenVMS node populate Unicenter Core. Right-clicking on any populated icon lets you launch the Management Console of the underlying product. The seamless integration into Unicenter Explorer gives you the power and knowledge to manage your enterprise.

Note: To launch a Management Console this way, you need XWindows software, such as Excursion.



Integration into Unicenter Event Management

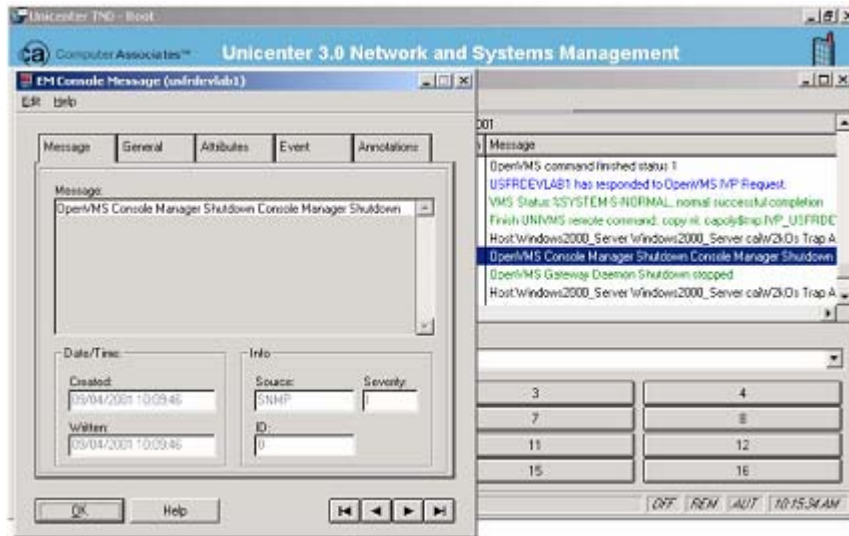
Event Management is the cornerstone of an eBusiness enterprise management solution. It lets you consolidate critical and informational messages from disparate sources across the enterprise and perform correlation, filtering, and automated actions. You can define messages and action routines to occur whenever certain events take place. The following products can send events to your Enterprise Event Console:

- Unicenter Console Management for OpenVMS
- Unicenter System Watchdog for OpenVMS
- Unicenter Job Management for OpenVMS
- Unicenter NSM Log Agent for OpenVMS
- Unicenter NSM System Agent for OpenVMS
- Unicenter NSM Oracle RDB Agent for OpenVMS
- Unicenter NSM Oracle Agent for OpenVMS

Using the utility `vmscmd`, you can define an action that executes a command on a given OpenVMS system.

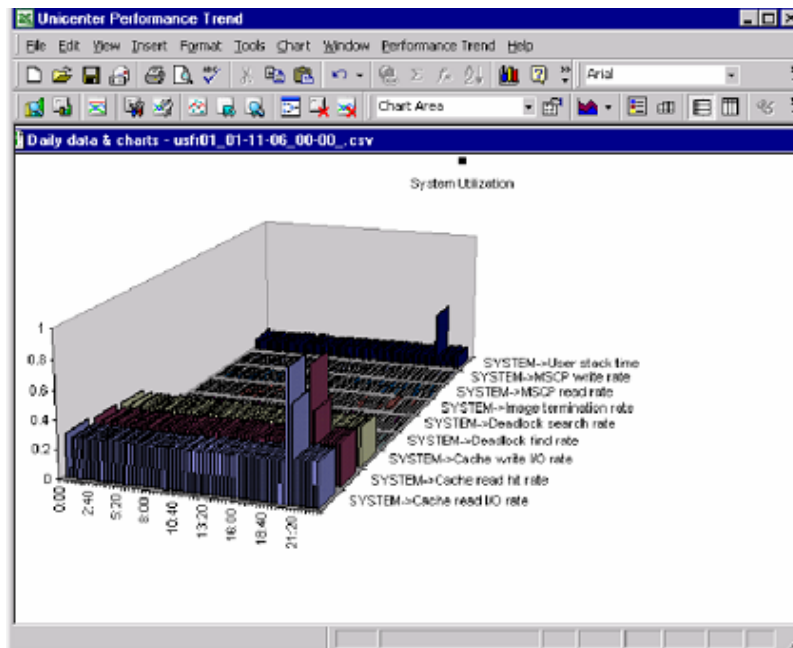
The syntax for `vmscmd` is the following:

```
vmscmd <nodename> <command string>
```



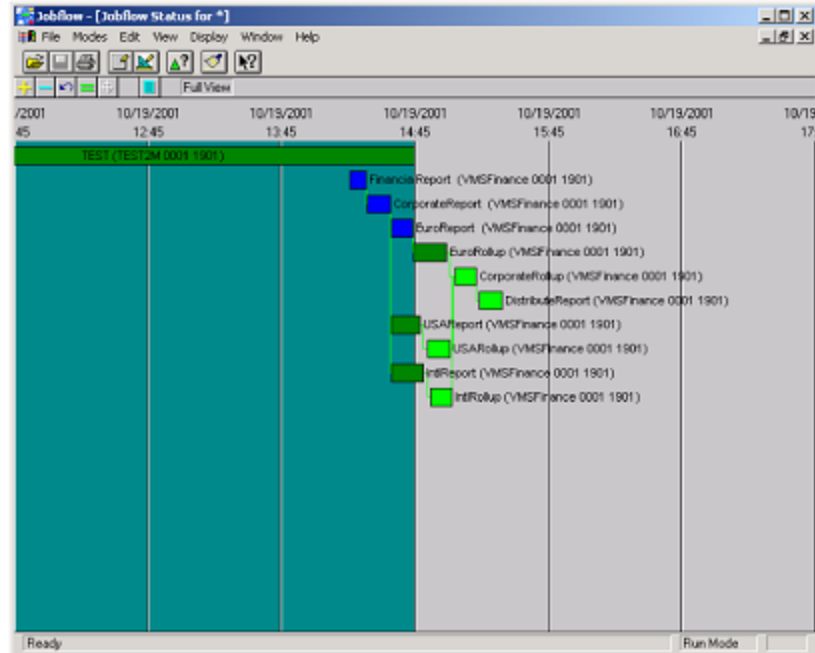
Integration into Unicenter NSM Performance Management

When you install Unicenter NSM Performance Management Option on the Unicenter NSM Manager, you can configure it to send performance data to the Unicenter Performance Manager.



Integration into Unicenter Job Management

Unicenter Job Management includes advanced reporting tools that allow for real-time graphical representation and tracking of workload schedules. Unicenter Job Management for OpenVMS I64 r3 provides an interface to Jobflow Status (a component of Unicenter Job Management for OpenVMS I64 r3) to display workload status.



Installation

You install CCS for OpenVMS using an Installation Wizard. The wizard guides you through the entire installation process.

Unicenter Console Management for OpenVMS and Unicenter Job Management for OpenVMS ship with CCS for Windows. When you run the Unicenter NSM Integration install, the program checks to see whether Unicenter NSM or CCS is installed. If neither product is installed, the program installs CCS.

CA Common Services for OpenVMS on OpenVMS

CCS for OpenVMS provides the application management environment and infrastructure to communicate with other Computer Associates solutions. CCS on OpenVMS consists of the following components:

Installation Registry

The installation registry helps track what CA products are currently installed on a system, manages patches that have been installed, and helps determine whether a previous version of the product is on the system. It also manages dependencies between products, so a shared component is not uninstalled inadvertently.

Common Communication Interface

Common Communication Interface (CCI) provides the underlying communication infrastructure that connects applications running on OpenVMS, z/OS, AS/400, Windows, UNIX, and other operating systems together.

CA Messaging

CA Messaging (CAM), is a robust messaging architecture that forms the basis of Unicenter NSM Performance Management Option, eTrust Admin Agent on OpenVMS, Data Transport Option, and other CA solutions. Unicenter Performance Management for OpenVMS uses CAM to transfer performance cubes to one or more Unicenter NSM Performance Management servers.

Common Startup and Shutdown Procedures

A common startup and shutdown procedure is provided as a part of CCS for OpenVMS. These common procedures ensure that all components are started in the correct order and inform the Unicenter NSM Manager or CCS that they are running. Although each product has its own startup and shutdown, the common procedures simplify managing each individual component.

The CCS startup command is the following:

```
@sys$startup:capoly$startup.com
```

The CCS shutdown command is the following:

```
@sys$startup:capoly$shutdown.com
```

For more information on starting and stopping CA Common Services, see the chapter "Starting and Stopping CA Common Services."

Configuring CCS Startup and Shutdown Procedures

You can configure CCS for OpenVMS Common Startup and Shutdown procedures to automatically startup and shutdown various installed Unicenter components and specify the locations of where events should be directed. To perform this configuration, run the following command procedure:

```
@sys$manager:capoly$set_startup_params
```

A menu displays the components you can configure.

Integration to Windows

CCS includes a set of integration services that handles communication between the Unicenter Manager running on Windows and the solutions running on OpenVMS. These services are responsible for the launching of XWindows GUIs on the Management station, accepting commands from vmscmd, and providing job flow information to Unicenter Job Management Job Flow Status. The integration also includes two command line executables, CAPOLY\$CASEND and CAPOLY\$TRAP to send events to a windows client. For more information on capoly\$trap, see the appendix "Using CCS Communications Utilities."

Installation

CCS is installed as part of the associated product. You do not need to do a separate installation. Also, only the necessary components are installed and activated, reducing the memory footprint.

Chapter 4: Starting and Stopping CA Common Services

To start OpenVMS product daemons, add the following line to the OpenVMS system startup file SYSTARTUP_VMS.COM:

```
@SYS$STARTUP:CAPOLY$STARTUP
```

To shut down OpenVMS product daemons, add the following line to the OpenVMS system shutdown file SYS\$MANAGER:SYSSHUTDOWN.COM:

```
@SYS$STARTUP:CAPOLY$SHUTDOWN
```

SYS\$STARTUP:CAPOLY\$STARTUP.COM starts the products selected for startup in the parameters file SYS\$SPECIFIC:[UNIVMS.BIN]STARTUP_PARAMS.COM. During installation VMSINSTAL prompts you to choose the components that you want to start automatically and stores this information in the parameters file as shown in the following figure:

```
Unicenter for OpenVMS - product startup selection
-----
1  Unicenter Job Management ..... YES
2  Unicenter Job Management Agent ..... YES
3  Unicenter Universal Job Management Agent ..... YES
4  Unicenter NSM Workload Management Jobflow Support YES
5  Unicenter Job Management NSM/UCS Integration..... YES
6  Unicenter Console Management ..... YES
7  Unicenter System Watchdog Agent ..... YES
8  Unicenter System Watchdog NSM/UCS Integration ... YES
9  Unicenter Performance Management Agent ..... YES
10 Unicenter NSM Performance Trend Cube ..... YES
11 Unicenter Common Services OpenVMS Gateway ..... YES
```

If you want to change the startup selection later, you can run the command file SYS\$MANAGER:CAPOLY\$SET_STARTUP_PARAMS.COM

Appendix A: Using CCS Communications Utilities

The integration includes two command-line executables to send events to a Windows client: CAPOLY\$CASEND and CAPOLY\$TRAP.

The following information will help you maximize your usage of these application tools. This information includes how to define a symbol, how to use CAPOLY\$CASEND, and how to use CAPOLY\$TRAP.

Defining a Foreign Symbol

Defining a foreign symbol lets you pass parameters to an image (executable).

For example, to define a foreign symbol for `catrap` use the following command:

```
CATRAP == "$capoly$bin:capoly$trap.exe"
```

To use the new symbol, type `catrap` followed by the parameters you want to send. For example, the following command passes parameters `p1`, `p2`, and `p3` to `catrap`:

```
catrap p1 p2 p3
```

Using CAPOLY\$CASEND

CASEND is a simplified version of CAPOLY\$TRAP that sends an informational message using SNMP traps to one or more Unicenter Managers. To use CASEND, the following steps are required:

1. Define a foreign symbol:
`casend ::= $capoly$bin:capoly$casend.exe`
2. Arguments for CAPOLY\$CASEND:

Value	Usage	Description
message	message	The message you want to send, as a quoted string
destination-nodes	destination-node	Target systems for the message

By default, CASEND will send the message to nodes defined by the logical `capoly$trap_dest`. If a comma-separated list of nodes is provided as the second argument, then the trap will be sent to these nodes and not the nodes defined by the logical.

Example

```
casend "This is a test message"
or
casend "This is a host message" hosta,hostb,hostc
```

Using CAPOLY\$TRAP

CAPOLY\$TRAP is equivalent to CATRAP on other Unicenter platforms. To use CAPOLY\$TRAP, the following steps are required:

1. Define a foreign symbol:
`catrap ::= $capoly$bin:capoly$trap`
2. Arguments of CAPOLY\$TRAP:

Value	Usage	Description
destination-node	destination-node	Target system for the message
enterprise	enterprise	OID for your enterprise
agent-addr	agent-addr	Address of the agent

Value	Usage	Description
generic-trap	generic-trap	Trap type
specific-trap	specific-trap	Specific trap type
time-stamp	time-stamp	Time of message
-d	[-d]	Hex dump of packet
-v	[-v]	Verbose output
-t	[-t <i>timeout</i>]	Overrides default timeout, where <i>timeout</i> identifies the new timeout
-r	[-r <i>retries</i>]	Overrides default number of tries, where <i>retries</i> identifies the new number of retries
-p	[-p <i>port</i>]	Identifies the port to use instead of 162, where <i>port</i> identifies the new port
-c	[-c <i>community</i>]	Overrides default community string, where <i>community</i> identifies the new community string

Note: You can make enterprise, agent-appr, and time stamp default by using a null (") string.

Example

```
catrap hosta 1.3.6.1.4.1.791.2.8.2.2.2 "" 6 2 ""
1.3.6.1.4.1.791.2.8.2.2.2.1 octetstring "My string A" 1.3.6.1.4.1.791.2.8.2.2.2.1
octetstring "My String B"
```

Notes:

1. The enterprise OID 1.3.6.1.4.1.791 is Computer Associates OID. You **MUST** not use this OID as part of your application. Using CA or another organization's OID may cause management applications that use SNMP traps to behave in an undetermined manner.
2. If your organization does not have an Enterprise OID, you can obtain one from the Internet Numbers Authority by sending an email to iana@isi.edu.

Appendix B: Using Performance Cubes

Overview

Unicenter Performance Agent for OpenVMS can create a performance data file, called a cube, that is readable by Unicenter NSM Performance Manager on the Unicenter Management station. When you install the Unicenter Performance Agent for OpenVMS, you will be asked questions related to the creation of this cube, including whether you want to activate the Performance Cube functionality.

Note: You do not have to activate this functionality for Unicenter Performance Agent for OpenVMS to function properly on an OpenVMS system.

When activated, Unicenter Performance Agent creates a cube file and periodically transfers that cube file to the Unicenter Management station. When you install Unicenter Performance Agent on an OpenVMS system, the following text file is created:

```
CAPOLY$DATA:CAPOLY$CUBE_OPTIONS.DAT
```

This file is created whether or not a Unicenter Management Station exists and whether or not you activate the functionality. Creating this file ensures that you do not have to completely reinstall Unicenter Performance Agent for OpenVMS to activate the functionality. This file contains the following information:

Unicenter Management Station Name

Identifies the name of the Unicenter Management Station Name. If you do not have a Unicenter Management station, you should enter a fictitious nodename when prompted. The fictitious nodename is stored in the CAPOLY\$DATA:CAPOLY\$CUBE_OPTIONS.DAT text file. You can change this name using any text editor. Look for the keyword "DATABASE" and change the node name accordingly. For example, if the node name entered during installation was NSMMGT1, the text file contains the following line:

```
DATABASE "NSMMGT1"
```

To change the node name, replace NSMMGT1 with the correct node name.

Timeband

Identifies the length of the interval that the data represents. When you are prompted for timeband during installation, enter a number in minutes. The default is 60. In the CAPOLY\$DATA:CAPOLY\$CUBE_OPTIONS.DAT text file, this information is stored in seconds. Look for the keyword TIMEBAND in the data file. For example, the default of 60 minutes is represented as the following:

TIMEBAND "3600"

To change the interval, replace 3600 seconds with the desired interval expressed in units of seconds.

Data Items

Identifies the data items to be included in the cube file. The following represent default entries:

```
PROCESS "Process process page count"  Y
PROCESS "Process WorkSet size limit"   N
```

where Y indicates that the "Process process page count" data is to be included and the N indicates that the "Process WorkSet size limit" data is not to be included in the cube file. You can edit the file by changing the Y and N to get the desired data.

The following list includes the default data items and their default setting (Y or N) in the cube options supplied during the installation. Data items are organized into groups of related items.

You can find a brief description and interpretation of these data items in chapter 5 of the *Unicenter Performance Agent for OpenVMS Administrator Guide*.

PROCESS Data Items

- PROCESS "Process CPU time" Y
- PROCESS "Process pagefault rate per cpu sec" Y
- PROCESS "Process pagefault IO rate per cpu sec" N
- PROCESS "Process direct IO rate" Y
- PROCESS "Process buffered IO rate" Y
- PROCESS "Process global page count" N
- PROCESS "Process process page count" Y
- PROCESS "Process WorkSet size limit" N
- PROCESS "Process WorkSet default" N
- PROCESS "Process WorkSet quota" N
- PROCESS "Process WorkSet extent" N
- PROCESS "Process uptime" N
- PROCESS "Process image activation rate" N
- PROCESS "Process compute queue time" Y
- PROCESS "Process disk operation rate" Y
- PROCESS "Process disk thruput rate" Y
- PROCESS "Process tape operation rate" N
- PROCESS "Process tape thruput rate" N
- PROCESS "Process terminal input rate" N
- PROCESS "Process terminal thruput rate" N
- PROCESS "Process think ms time" N
- PROCESS "Process virtual address space used" Y
- PROCESS "Process response ms time" N
- PROCESS "Process Kernel threads max" N
- PROCESS "Process Kernel threads real" N
- PROCESS "Process Kernel threads active" N

DISK Data Items

- DISK "Disk operations rate" Y
- DISK "Disk thrupt rate" Y
- DISK "Disk service time" Y
- DISK "Disk queue length" Y
- DISK "Disk paging operations rate" Y
- DISK "Disk paging thrupt rate" N
- DISK "Disk swap operations rate" Y
- DISK "Disk swap thrupt rate" N
- DISK "Disk busy time" Y
- DISK "Disk measurement interval" N
- DISK "Disk read operations rate" Y
- DISK "Disk MSCP operations rate" Y
- DISK "Disk MSCP paging/swapping rate" N
- DISK "Disk MSCP thrupt rate" N
- DISK "Disk split operations rate" Y
- DISK "Disk error rate" N
- DISK "Disk free blocks" N
- DISK "Disk total blocks" N
- DISK "Disk directory index cache pages" N
- DISK "Disk quota cache entries" N
- DISK "Disk FID cache entries" N
- DISK "Disk extent cache entries" N
- DISK "Disk file header cache pages" N
- DISK "Disk directory data cache pages" N
- DISK "Disk storage bitmap cache pages" N

MAGTAPE Data Items

- MAGTAPE "Magtape operations rate" Y
- MAGTAPE "Magtape thruput rate" Y
- MAGTAPE "Magtape service time" N
- MAGTAPE "Magtape queue length" N
- MAGTAPE "Magtape busy time" N
- MAGTAPE "Magtape measurement interval" N
- MAGTAPE "Magtape read operations rate" Y
- MAGTAPE "Magtape error rate" N

COMM Data Items

- COMM "Comm operations rate" Y

CPU Data Items

- CPU "CPU kernel mode time" Y
- CPU "CPU executive mode time" Y
- CPU "CPU supervisor mode time" Y
- CPU "CPU user mode time" Y
- CPU "CPU interrupt level time" Y
- CPU "CPU compatibility mode time" Y
- CPU "CPU null time" Y
- CPU "CPU multiprocessor synchronization time" Y
- CPU "CPU vector processing time" Y

HOTFILE Data Items

- HOTFILE "File service ms time" N
- HOTFILE "File operation rate" N
- HOTFILE "File thruput kb rate" N
- HOTFILE "File read rate" N
- HOTFILE "File split rate" N
- HOTFILE "File window turn rate" N
- HOTFILE "File paging rate" N
- HOTFILE "File swapping rate" N
- HOTFILE "File MSCP operation rate" N

CONFIG Data Items

- CONFIG "SCS datagrams send rate" Y
- CONFIG "SCS datagrams receive rate" Y
- CONFIG "SCS datagrams discard rate" N
- CONFIG "SCS message send rate" Y
- CONFIG "SCS message receive rate" Y
- CONFIG "SCS block send data initiate rate" N
- CONFIG "SCS block send data kb thruput rate" Y
- CONFIG "SCS block request data initiate rate" N
- CONFIG "SCS block request data kb thruput rate" N
- CONFIG "SCS block transfer kb mapped rate" N
- CONFIG "SCS connection queued for send credit rate" N
- CONFIG "SCS connection queued for buffer descs rate" N

SYSTEM Data Items

- SYSTEM "Process count" Y
- SYSTEM "Scheduler collided page wait time" N
- SYSTEM "Scheduler resource wait time" N
- SYSTEM "Scheduler common event wait time" N
- SYSTEM "Scheduler pagefault wait time" N
- SYSTEM "Scheduler local event wait time" N
- SYSTEM "Scheduler local event time outswapped" N
- SYSTEM "Scheduler hibernate time" N
- SYSTEM "Scheduler hibernate time outswapped" N
- SYSTEM "Scheduler suspend time" N
- SYSTEM "Scheduler suspend time outswapped" N
- SYSTEM "Scheduler free page wait time" N
- SYSTEM "Scheduler compute queue time" Y
- SYSTEM "Scheduler compute queue time outswapped" Y
- SYSTEM "Scheduler current time" N
- SYSTEM "Interrupt stack time" Y
- SYSTEM "Kernel stack time" N
- SYSTEM "Exec stack time" N
- SYSTEM "Supervisor stack time" N
- SYSTEM "User stack time" Y
- SYSTEM "Compatibility mode time" N
- SYSTEM "Idle time" Y
- SYSTEM "MP synchronization time" N
- SYSTEM "Page fault rate" Y
- SYSTEM "Page fault read read" N
- SYSTEM "Page fault read IO rate" N
- SYSTEM "page fault write rate" N
- SYSTEM "Page fault write IO rate" N
- SYSTEM "Page faults from free list rate" N
- SYSTEM "Page faults from modified list rate" N
- SYSTEM "Demand zero page fault rate" N
- SYSTEM "Global page fault rate" N

- SYSTEM "Transition page fault rate" N
- SYSTEM "System page fault rate" Y
- SYSTEM "Free list page rate" Y
- SYSTEM "Modified list page rate" Y
- SYSTEM "Direct IO rate" Y
- SYSTEM "Buffered IO rate" Y
- SYSTEM "Mailbox read rate" N
- SYSTEM "Mailbox write rate" N
- SYSTEM "Logical name translation rate" N
- SYSTEM "Inswap rate" Y
- SYSTEM "File window miss rate" N
- SYSTEM "Split Transfer rate" Y
- SYSTEM "Transfers w/o window turn rate" N
- SYSTEM "Directory LRU hit rate" N
- SYSTEM "Directory LRU misse rate" N
- SYSTEM "Quota cache hit rate" N
- SYSTEM "Quota cache misse rate" N
- SYSTEM "File ID cache hit rate" N
- SYSTEM "File ID cache misse rate" N
- SYSTEM "Extent cache hit rate" N
- SYSTEM "Extent cache misse rate" N
- SYSTEM "File header cache hit rate" N
- SYSTEM "File header cache misse rate" N
- SYSTEM "Directory data block hit rate" N
- SYSTEM "Directory data block misse rate" N
- SYSTEM "Storage bit map cache hit rate" N
- SYSTEM "Storage bit map cache misse rate" N
- SYSTEM "File open rate" Y
- SYSTEM "Erase QIO rate" N
- SYSTEM "XQP volume synch lock rate" N
- SYSTEM "XQP volume synch lock wait rate" N
- SYSTEM "XQP directory and volume synch lock rate" N
- SYSTEM "XQP directory and volume synch lock wait rate" N

- SYSTEM "XQP access lock rate" N
- SYSTEM "XQP cache free space wait rate" N
- SYSTEM "File system CPU time" Y
- SYSTEM "DECNET arriving local packet rate" N
- SYSTEM "DECNET departing local packet rate" N
- SYSTEM "DECNET transit packet rate" N
- SYSTEM "DECNET transit congestion loss rate" N
- SYSTEM "DECNET receiver buffer failure rate" N
- SYSTEM "Local new ENQ request rate" N
- SYSTEM "Incoming new ENQ request rate" N
- SYSTEM "Outgoing new ENQ request rate" N
- SYSTEM "Local conversion ENQ request rate" N
- SYSTEM "Incoming conversion ENQ request rate" N
- SYSTEM "Outgoing conversion ENQ request rate" N
- SYSTEM "Local dequeue ENQ request rate" N
- SYSTEM "Incoming dequeue ENQ request rate" N
- SYSTEM "Outgoing dequeue ENQ request rate" N
- SYSTEM "Enqueue requests wait rate" N
- SYSTEM "Enqueue requests not queued rate" N
- SYSTEM "Local blocking ASTs queued rate" N
- SYSTEM "Incoming blocking ASTs queued rate" N
- SYSTEM "Outgoing blocking ASTs queued rate" N
- SYSTEM "Incoming directory operations rate" N
- SYSTEM "Outgoing directory operations rate" N
- SYSTEM "Incoming deadlock detection message rate" N
- SYSTEM "Outgoing deadlock detection message rate" N
- SYSTEM "Deadlock search rate" Y
- SYSTEM "Deadlock find rate" Y
- SYSTEM "User memory page count" N
- SYSTEM "Terminal reads(not used)" N
- SYSTEM "Terminal writes(not used)" N
- SYSTEM "Image activation rate" Y
- SYSTEM "Image termination rate" Y

- SYSTEM "Lock ID table length" N
- SYSTEM "Lock IDs in use count" N
- SYSTEM "Resource table length" N
- SYSTEM "Resources in use count" N
- SYSTEM "Non-paged pool length" N
- SYSTEM "Non-paged free block count" N
- SYSTEM "Non-paged free blocks leq 32 count" N
- SYSTEM "Non-paged free byte count" N
- SYSTEM "Non-paged maximum block count" N
- SYSTEM "Non-paged minimum block count" N
- SYSTEM "Paged pool length" N
- SYSTEM "Paged free block count" N
- SYSTEM "Paged free blocks leq 32 count" N
- SYSTEM "Paged free byte count" N
- SYSTEM "Paged maximum block count" N
- SYSTEM "Paged minimum block count" N
- SYSTEM "SRP list length" N
- SYSTEM "SRPs in use count" N
- SYSTEM "IRP list length" N
- SYSTEM "IRPs in use count" N
- SYSTEM "LRP list length" N
- SYSTEM "LRPs in use count" N
- SYSTEM "IO request desc table size" N
- SYSTEM "IO request desc table queue length" N
- SYSTEM "MSCP number original buffers count" N
- SYSTEM "MSCP number free buffers count" N
- SYSTEM "MSCP tiniest buffer allowed length" N
- SYSTEM "MSCP number free pool bytes count" N
- SYSTEM "MSCP number original packets" N
- SYSTEM "MSCP number free packets count" N
- SYSTEM "MSCP buffer wait queue length" N
- SYSTEM "MSCP wait queue highwater mark" N
- SYSTEM "MSCP number split transfer rate" N

- SYSTEM "MSCP number IO fragments count" N
- SYSTEM "MSCP operation rate" N
- SYSTEM "MSCP read rate" Y
- SYSTEM "MSCP write rate" Y
- SYSTEM "Paging total pages count" N
- SYSTEM "Paging free pages count" N
- SYSTEM "Out swaps count" N
- SYSTEM "Header in swaps count" N
- SYSTEM "Header out swaps count" N
- SYSTEM "Bad page faults rate" N
- SYSTEM "Transition faults rate" N
- SYSTEM "Number of files open count" N
- SYSTEM "Interactive processes count" N
- SYSTEM "Network processes count" N
- SYSTEM "Batch processes count" N
- SYSTEM "Sample count" N
- SYSTEM "Busy" N
- SYSTEM "Swap busy" N
- SYSTEM "MIO busy" N
- SYSTEM "Any IO busy" N
- SYSTEM "Page wait" N
- SYSTEM "Swap wait" N
- SYSTEM "MMG wait" N
- SYSTEM "SYS idle" N
- SYSTEM "CPU only" N
- SYSTEM "IO only" N
- SYSTEM "CPU IO" N
- SYSTEM "Available CPUs" N
- SYSTEM "VBSSGL_CPUTICKS" N
- SYSTEM "Page size" N
- SYSTEM "Cache size in pages count" N
- SYSTEM "Cache free pages count" N
- SYSTEM "Cache pages in use count" N

- SYSTEM "Cache maximum length" N
- SYSTEM "Cache files retained count" N
- SYSTEM "Cache read I/O rate" Y
- SYSTEM "Cache read hit rate" Y
- SYSTEM "Cache write I/O rate" Y
- SYSTEM "Cache write bypass count" N
- SYSTEM "Cache read bypass count"

Appendix C: SNMP Traps

These are the message records that describe the SNMP traps sent from a Unicenter for OpenVMS manager to the Unicenter NSM Management station.

Message Records

The following types of message records are described in the sections that follow.

- CommandIT UNIX
- CommandIT UNIX OPCOM
- OpenVMS OPCOM
- OpenVMS System Monitor Event
- Unicenter File Transfer
- Unicenter TNG
- Workload Manager

Unicenter TNG Console Manager Startup Message

```
del msgrec msgid="* SNMPTRAP: * * * * * 2201 * * * 1.3.6.1.4.1.791.2.8.2.2.1.1"
def msgrec cont=yes msgid="* SNMPTRAP: * * * * * 2201 * * *
  1.3.6.1.4.1.791.2.8.2.2.1.1" DESC="Unicenter TNG Console Manager Startup."
def msgact name=(*,5) action="DISCARD"
def msgact name=(*,*) action="EVALUATE" COLOR="GREEN" SEVERITY="I"
  TEXT="Console Manager Startup: &(16:) "
def msgact name=(*,*) action="SENDAPPL" TEXT='P(CA-UNIVMS.pipe)
  /FUNCTION=CONSOLEMG /HOSTNAME=&NODEID /SEV=0 /MESSAGE="Started &day &datem
  &time"'
```

Unicenter TNG Console Manager Event Daemon Startup Message

```
del msgrec msgid="* SNMPTRAP: * * * * * 2201 * * * 1.3.6.1.4.1.791.2.8.2.2.1.2"
def msgrec cont=yes msgid="* SNMPTRAP: * * * * * 2201 * * *
  1.3.6.1.4.1.791.2.8.2.2.1.2" DESC="Unicenter TNG Console Manager Event Daemon
  Startup message."
def msgact name=(*,5) action="DISCARD"
def msgact name=(*,*) action="EVALUATE" COLOR="GREEN" SEVERITY="I" TEXT="Console
  Manager Startup: &(16:) "
def msgact name=(*,*) action="SENDAPPL" TEXT='P(CA-UNIVMS.pipe)
  /FUNCTION=TNGCONDAEMON /HOSTNAME=&NODEID /SEV=0 /MESSAGE="Started &day &datem
  &time"'
```

Unicenter TNG Console Manager Startup Failure Message

```
del msgrec msgid="* SNMPTRAP: * * * * * 2201 * * * 1.3.6.1.4.1.791.2.8.2.2.2"
def msgrec cont=yes msgid="* SNMPTRAP: * * * * * 2201 * * *
  1.3.6.1.4.1.791.2.8.2.2.2" DESC="Unicenter TNG Console Manager Startup failure
  message."
def msgact name=(*,5) action="DISCARD"
def msgact name=(*,*) action="EVALUATE" COLOR="RED" SEVERITY="F" TEXT="Console
  Manager failure &(16:) "
def msgact name=(*,*) action="SENDAPPL" TEXT='P(CA-UNIVMS.pipe) /FUNCTION=CONSOLE
  /HOSTNAME=&NODEID /SEV=5 /Message="Failure: &(16:) "'
```

Unicenter TNG Console Manager Shutdown Success Message

```
del msgrec msgid="* SNMPTRAP: * * * * * 2201 * * * 1.3.6.1.4.1.791.2.8.2.2.3.1"
def msgrec cont=yes msgid="* SNMPTRAP: * * * * * 2201 * * *
  1.3.6.1.4.1.791.2.8.2.2.3.1" DESC="Unicenter TNG Console Manager Shutdown
  success message."
def msgact name=(*,5) action="DISCARD"
def msgact name=(*,*) action="EVALUATE" COLOR="GREEN" SEVERITY="I" SEVERITY="I"
  TEXT="OpenVMS Console Manager Shutdown &(16:) "
def msgact name=(*,*) action="SENDAPPL" TEXT='P(CA-UNIVMS.pipe)
  /FUNCTION=CONSOLEMGR /HOSTNAME=&NODEID /SEV=6 /MESSAGE="Shutdown &day &datem
  &time"'
```

Unicenter TNG Console Manager Event Daemon Shutdown

```
del msgrec msgid="* SNMPTRAP: * * * * * 2201 * * * 1.3.6.1.4.1.791.2.8.2.2.3.2"
def msgrec cont=yes msgid="* SNMPTRAP: * * * * * 2201 * * *
  1.3.6.1.4.1.791.2.8.2.2.3.2" DESC="Unicenter TNG Console Manager Event Daemon
  Shutdown."
def msgact name=(*,5) action="DISCARD"
def msgact name=(*,*) action="EVALUATE" COLOR="GREEN" SEVERITY="I" SEVERITY="I"
  TEXT="OpenVMS Console Manager Shutdown &(16:) "
def msgact name=(*,*) action="SENDAPPL" TEXT='P(CA-UNIVMS.pipe)
  /FUNCTION=TNGCONDAEMON /HOSTNAME=&NODEID /SEV=6 /MESSAGE="Shutdown &day &datem
  &time"'
```

CommandIT UNIX Startup

```
delete msgrec msgid="* SNMPTRAP: * * * * * 2201 * * *
  1.3.6.1.4.1.791.2.8.7.2.1.1"
def msgrec cont=yes msgid="* SNMPTRAP: * * * * * 2201 * * *
  1.3.6.1.4.1.791.2.8.7.2.1.1" DESC="CommandIT UNIX Startup."
def msgact name=(*,5) action="DISCARD"
def msgact name=(*,*) action="EVALUATE" COLOR="GREEN" SEVERITY="I"
  TEXT="CommandIT UNIX Startup: &(16:) "
def msgact name=(*,*) action="SENDAPPL" TEXT='P(CA-UNIVMS.pipe)
  /FUNCTION=CONSOLEMGRUNIX /HOSTNAME=&NODEID /SEV=0 /MESSAGE="Started &day &datem
  &time"'
```

CommandIT UNIX Startup Failure Message

```
delete msgrec msgid="* SNMPTRAP: * * * * * 2201 * * *
  1.3.6.1.4.1.791.2.8.7.2.2"
```

```

def msgrec cont=yes msgid="* SNMPTRAP: * * * * * 2201 * * *
1.3.6.1.4.1.791.2.8.7.2" DESC="CommandIT UNIX Startup failure message."
def msgact name=(*,5) action="DISCARD"
def msgact name=(*,*) action="EVALUATE" COLOR="RED" SEVERITY="F" TEXT="CommandIT
UNIX failure &(16:) "
def msgact name=(*,*) action="SENDAPPL" TEXT='P(CA-UNIVMS.pipe)
/FUNCTION=CONSOLEUNIX /HOSTNAME=&NODEID /SEV=5 /Message="Failure: &(16:) "'

```

CommandIT UNIX Shutdown

```

delete msgrec msgid="* SNMPTRAP: * * * * * 2202 * * * 1.3.6.1.4.1.791.2.8.7.2"
def msgrec cont=yes msgid="* SNMPTRAP: * * * * * 2202 * * *
1.3.6.1.4.1.791.2.8.7.2" DESC="CommandIT UNIX Shutdown."
def msgact name=(*,5) action="DISCARD"
def msgact name=(*,*) action="EVALUATE" COLOR="GREEN" SEVERITY="I"
TEXT="CommandIT UNIX Shutdown &(16:) "
def msgact name=(*,*) action="SENDAPPL" TEXT='P(CA-UNIVMS.pipe)
/FUNCTION=CONSOLEMGRUNIX /HOSTNAME=&NODEID /SEV=6 /MESSAGE="Shutdown &day
&datem &time"'

```

Unicenter TNG Performance Agent Startup

```

del msgrec msgid="* SNMPTRAP: * * * * * 2301 * * * 1.3.6.1.4.1.791.2.8.3.2.1.1"
def msgrec cont=yes msgid="* SNMPTRAP: * * * * * 2301 * * *
1.3.6.1.4.1.791.2.8.3.2.1.1" DESC="Unicenter TNG Performance Agent Startup."
def msgact name=(*,5) action="DISCARD"
def msgact name=(*,*) action="EVALUATE" COLOR="GREEN" SEVERITY="I"
TEXT="Performance Agent success &(16:) "
def msgact name=(*,*) action="SENDAPPL" TEXT='P(CA-UNIVMS.pipe)
/FUNCTION=PERFAGENT /HOSTNAME=&NODEID /SEV=0 /MESSAGE="Started &day &datem
&time"'

```

Unicenter TNG Performance Cube Startup

```

del msgrec msgid="* SNMPTRAP: * * * * * 2301 * * * 1.3.6.1.4.1.791.2.8.3.2.1.2"
def msgrec cont=yes msgid="* SNMPTRAP: * * * * * 2301 * * *
1.3.6.1.4.1.791.2.8.3.2.1.2" DESC="Unicenter TNG Performance Cube Startup."
def msgact name=(*,5) action="DISCARD"
def msgact name=(*,*) action="EVALUATE" COLOR="GREEN" SEVERITY="I"
TEXT="Performance Cube success &(16:) "
def msgact name=(*,*) action="SENDAPPL" TEXT='P(CA-UNIVMS.pipe)
/FUNCTION=PERFCUBEMAN /HOSTNAME=&NODEID /SEV=0 /MESSAGE="Started &day &datem
&time"'

```

Unicenter TNG Performance Manager Startup

```

del msgrec msgid="* SNMPTRAP: * * * * * 2301 * * * 1.3.6.1.4.1.791.2.8.3.2.1.3"
def msgrec cont=yes msgid="* SNMPTRAP: * * * * * 2301 * * *
1.3.6.1.4.1.791.2.8.3.2.1.3" DESC="Unicenter TNG Performance Manager Startup."
def msgact name=(*,5) action="DISCARD"
def msgact name=(*,*) action="EVALUATE" COLOR="GREEN" SEVERITY="I"
TEXT="Performance Manager success &(16:) "
def msgact name=(*,*) action="SENDAPPL" TEXT='P(CA-UNIVMS.pipe)
/FUNCTION=PERFORMANCE /HOSTNAME=&NODEID /SEV=0 /MESSAGE="Started &day &datem
&time"'

```

Unicenter TNG Performance Failure Message

```
del msgrec msgid="* SNMPTRAP: * * * * * 2301 * * * 1.3.6.1.4.1.791.2.8.3.2.2"
def msgrec cont=yes msgid="* SNMPTRAP: * * * * * 2301 * * *
  1.3.6.1.4.1.791.2.8.3.2.2" DESC="Unicenter TNG Performance failure message."
def msgact name=(*,5) action="DISCARD"
def msgact name=(*,*) action="EVALUATE" COLOR="RED" SEVERITY="F"
  TEXT="Performance failure &(16:) "
def msgact name=(*,*) action="SENDAPPL" TEXT='P(CA-UNIVMS.pipe)
  /FUNCTION=PERFORMANCE /HOSTNAME=&NODEID /SEV=5 /Message="Failure: &(16:) "'
```

Unicenter TNG Performance Agent Shutdown

```
del msgrec msgid="* SNMPTRAP: * * * * * 2301 * * * 1.3.6.1.4.1.791.2.8.3.2.3.1"
def msgrec cont=yes msgid="* SNMPTRAP: * * * * * 2301 * * *
  1.3.6.1.4.1.791.2.8.3.2.3.1" DESC="Unicenter TNG Performance Agent shutdown."
def msgact name=(*,5) action="DISCARD"
def msgact name=(*,*) action="EVALUATE" COLOR="GREEN" SEVERITY="I" TEXT="OpenVMS
  Performance Agent Shutdown &(16:) "
def msgact name=(*,*) action="SENDAPPL" TEXT='P(CA-UNIVMS.pipe)
  /FUNCTION=PERFAGENT /HOSTNAME=&NODEID /SEV=6 /MESSAGE="Shutdown &day &datem
  &time"'
```

Unicenter TNG Performance Cube Shutdown

```
del msgrec msgid="* SNMPTRAP: * * * * * 2301 * * * 1.3.6.1.4.1.791.2.8.3.2.3.2"
def msgrec cont=yes msgid="* SNMPTRAP: * * * * * 2301 * * *
  1.3.6.1.4.1.791.2.8.3.2.3.2" DESC="Unicenter TNG Performance Cube shutdown."
def msgact name=(*,5) action="DISCARD"
def msgact name=(*,*) action="EVALUATE" COLOR="GREEN" SEVERITY="I" TEXT="OpenVMS
  Performance Cube Shutdown &(16:) "
def msgact name=(*,*) action="SENDAPPL" TEXT='P(CA-UNIVMS.pipe)
  /FUNCTION=PERFCUBEMAN /HOSTNAME=&NODEID /SEV=6 /MESSAGE="Shutdown &day &datem
  &time"'
```

Unicenter TNG Performance Manager Shutdown

```
del msgrec msgid="* SNMPTRAP: * * * * * 2301 * * * 1.3.6.1.4.1.791.2.8.3.2.3.3"
def msgrec cont=yes msgid="* SNMPTRAP: * * * * * 2301 * * *
  1.3.6.1.4.1.791.2.8.3.2.3.3" DESC="Unicenter TNG Performance Manager shutdown."
def msgact name=(*,5) action="DISCARD"
def msgact name=(*,*) action="EVALUATE" COLOR="GREEN" SEVERITY="I" TEXT="OpenVMS
  Performance Manager Shutdown &(16:) "
def msgact name=(*,*) action="SENDAPPL" TEXT='P(CA-UNIVMS.pipe)
  /FUNCTION=PERFORMANCE /HOSTNAME=&NODEID /SEV=6 /MESSAGE="Shutdown &day &datem
  &time"'
```

Unicenter TNG Workload Jobflow Daemon Startup

```
del msgrec msgid="* SNMPTRAP: * * * * * 2401 * * * 1.3.6.1.4.1.791.2.8.4.2.1.1"
def msgrec cont=yes msgid="* SNMPTRAP: * * * * * 2401 * * *
  1.3.6.1.4.1.791.2.8.4.2.1.1" DESC="Unicenter TNG Workload Jobflow Daemon
  startup."
def msgact name=(*,5) action="DISCARD"
def msgact name=(*,*) action="EVALUATE" COLOR="GREEN" SEVERITY="I" TEXT="Workload
  Manager success &(16:) "
```

```

def msgact name=(*,*) action="SENDAPPL" TEXT='P(CA-UNIVMS.pipe) /FUNCTION=JOBFLOW
/HOSTNAME=&NODEID /SEV=0 /MESSAGE="Started &day &datem &time"'
def msgact name=(*,*) action="COMMAND" TEXT="Uniapp &NODEID SCHED"
def msgact name=(*,*) action="COMMAND" TEXT="Uniapp &NODEID JFLOW"

```

Unicenter TNG Workload Scheduler Manager Startup."

```

del msgrec msgid="* SNMPTRAP: * * * * * 2401 * * * 1.3.6.1.4.1.791.2.8.4.2.1.2"
def msgrec cont=yes msgid="* SNMPTRAP: * * * * * 2401 * * *
1.3.6.1.4.1.791.2.8.4.2.1.2" DESC="Unicenter TNG Workload Scheduler Manager
Startup."
def msgact name=(*,5) action="DISCARD"
def msgact name=(*,*) action="EVALUATE" COLOR="GREEN" SEVERITY="I" TEXT="Workload
Manager success &(16:) "
def msgact name=(*,*) action="SENDAPPL" TEXT='P(CA-UNIVMS.pipe) /FUNCTION=WKLDMGR
/HOSTNAME=&NODEID /SEV=0 /MESSAGE="Started &day &datem &time"'

```

Unicenter TNG Workload Scheduler Agent Startup

```

del msgrec msgid="* SNMPTRAP: * * * * * 2401 * * * 1.3.6.1.4.1.791.2.8.4.2.1.3"
def msgrec cont=yes msgid="* SNMPTRAP: * * * * * 2401 * * *
1.3.6.1.4.1.791.2.8.4.2.1.3" DESC="Unicenter TNG Workload Scheduler Agent
Startup."
def msgact name=(*,5) action="DISCARD"
def msgact name=(*,*) action="EVALUATE" COLOR="GREEN" SEVERITY="I" TEXT="Workload
Manager success &(16:) "
def msgact name=(*,*) action="SENDAPPL" TEXT='P(CA-UNIVMS.pipe)
/FUNCTION=WKLDAGENT /HOSTNAME=&NODEID /SEV=0 /MESSAGE="Started &day &datem
&time"'

```

Unicenter TNG Workload Event Daemon Startup

```

del msgrec msgid="* SNMPTRAP: * * * * * 2401 * * * 1.3.6.1.4.1.791.2.8.4.2.1.4"
def msgrec cont=yes msgid="* SNMPTRAP: * * * * * 2401 * * *
1.3.6.1.4.1.791.2.8.4.2.1.4" DESC="Unicenter TNG Workload Event Daemon
Startup."
def msgact name=(*,5) action="DISCARD"
def msgact name=(*,*) action="EVALUATE" COLOR="GREEN" SEVERITY="I" TEXT="Workload
Manager success &(16:) "
def msgact name=(*,*) action="SENDAPPL" TEXT='P(CA-UNIVMS.pipe)
/FUNCTION=WKLDEVENT /HOSTNAME=&NODEID /SEV=0 /MESSAGE="Started &day &datem
&time"'

```

Unicenter TNG Workload Agent Startup

```

del msgrec msgid="* SNMPTRAP: * * * * * 2401 * * * 1.3.6.1.4.1.791.2.8.4.2.1.5"
def msgrec cont=yes msgid="* SNMPTRAP: * * * * * 2401 * * *
1.3.6.1.4.1.791.2.8.4.2.1.5" DESC="Unicenter TNG Workload Agent Startup."
def msgact name=(*,5) action="DISCARD"
def msgact name=(*,*) action="EVALUATE" COLOR="GREEN" SEVERITY="I" TEXT="Workload
Manager success &(16:) "
def msgact name=(*,*) action="SENDAPPL" TEXT='P(CA-UNIVMS.pipe)
/FUNCTION=WKLDXPLAT /HOSTNAME=&NODEID /SEV=0 /MESSAGE="Started &day &datem
&time"'

```

Unicenter TNG Workload Manager Failure Message

```
del msgrec msgid="* SNMPTRAP: * * * * * 2401 * * * 1.3.6.1.4.1.791.2.8.4.2.2"
def msgrec cont=yes msgid="* SNMPTRAP: * * * * * 2401 * * *
  1.3.6.1.4.1.791.2.8.4.2.2" DESC="Unicenter TNG Workload Manager failure
  message."
def msgact name=(*,5) action="DISCARD"
def msgact name=(*,*) action="EVALUATE" COLOR="RED" SEVERITY="F" TEXT="Workload
  Manager failure &(18:) "
def msgact name=(*,*) action="SENDAPPL" TEXT='P(CA-UNIVMS.pipe)
  /FUNCTION=WORKLOAD /HOSTNAME=&NODEID /SEV=5 /Message="Failure: &(18:) "'
```

Unicenter TNG Workload Jobflow Daemon Failure Startup

```
del msgrec msgid="* SNMPTRAP: * * * * * 2401 * * * 1.3.6.1.4.1.791.2.8.4.2.2.1"
def msgrec cont=yes msgid="* SNMPTRAP: * * * * * 2401 * * *
  1.3.6.1.4.1.791.2.8.4.2.2.1" DESC="Unicenter TNG Workload Jobflow Daemon
  Failure startup."
def msgact name=(*,5) action="DISCARD"
def msgact name=(*,*) action="EVALUATE" COLOR="RED" SEVERITY="F" TEXT="Workload
  Manager daemon failure &(16:) "
def msgact name=(*,*) action="SENDAPPL" TEXT='P(CA-UNIVMS.pipe) /FUNCTION=JOBFLOW
  /HOSTNAME=&NODEID /SEV=0 /MESSAGE="Failure: &(18:) "'
```

Unicenter TNG Workload Jobflow Daemon Shutdown Message

```
del msgrec msgid="* SNMPTRAP: * * * * * 2401 * * * 1.3.6.1.4.1.791.2.8.4.2.3.1"
def msgrec cont=yes msgid="* SNMPTRAP: * * * * * 2401 * * *
  1.3.6.1.4.1.791.2.8.4.2.3.1" DESC="Unicenter TNG Workload Jobflow Daemon
  Shutdown message."
def msgact name=(*,5) action="DISCARD"
def msgact name=(*,*) action="EVALUATE" COLOR="GREEN" SEVERITY="I" TEXT="OpenVMS
  Workload Shutdown &(16:) "
def msgact name=(*,*) action="SENDAPPL" TEXT='P(CA-UNIVMS.pipe) /FUNCTION=JOBFLOW
  /HOSTNAME=&NODEID /SEV=6 /MESSAGE="Shutdown at &day &datem &time"'
```

Unicenter TNG Workload Scheduler Manager Shutdown Message.

```
del msgrec msgid="* SNMPTRAP: * * * * * 2401 * * * 1.3.6.1.4.1.791.2.8.4.2.3.2"
def msgrec cont=yes msgid="* SNMPTRAP: * * * * * 2401 * * *
  1.3.6.1.4.1.791.2.8.4.2.3.2" DESC="Unicenter TNG Workload Scheduler Manager
  Shutdown message."
def msgact name=(*,5) action="DISCARD"
def msgact name=(*,*) action="EVALUATE" COLOR="GREEN" SEVERITY="I" TEXT="OpenVMS
  Workload Shutdown &(16:) "
def msgact name=(*,*) action="SENDAPPL" TEXT='P(CA-UNIVMS.pipe) /FUNCTION=WKLDMGR
  /HOSTNAME=&NODEID /SEV=6 /MESSAGE="Shutdown at &day &datem &time"'
```

Unicenter TNG Workload Scheduler Agent Shutdown Message

```
del msgrec msgid="* SNMPTRAP: * * * * * 2401 * * * 1.3.6.1.4.1.791.2.8.4.2.3.3"
def msgrec cont=yes msgid="* SNMPTRAP: * * * * * 2401 * * *
  1.3.6.1.4.1.791.2.8.4.2.3.3" DESC="Unicenter TNG Workload Scheduler Agent
  Shutdown message."
def msgact name=(*,5) action="DISCARD"
```

```

def msgact name=(*,*) action="EVALUATE" COLOR="GREEN" SEVERITY="I" TEXT="OpenVMS
Workload Shutdown &(16:) "
def msgact name=(*,*) action="SENDAPPL" TEXT='P(CA-UNIVMS.pipe)
/FUNCTION=WKLDAGENT /HOSTNAME=&NODEID /SEV=6 /MESSAGE="Shutdown at &day &datem
&time"'

```

Unicenter TNG Workload Event Daemon Shutdown Message

```

del msgrec msgid="* SNMPTRAP: * * * * * 2401 * * * 1.3.6.1.4.1.791.2.8.4.2.3.4"
def msgrec cont=yes msgid="* SNMPTRAP: * * * * * 2401 * * *
1.3.6.1.4.1.791.2.8.4.2.3.4" DESC="Unicenter TNG Workload Event Daemon Shutdown
message."
def msgact name=(*,5) action="DISCARD"
def msgact name=(*,*) action="EVALUATE" COLOR="GREEN" SEVERITY="I" TEXT="OpenVMS
Workload Shutdown &(16:) "
def msgact name=(*,*) action="SENDAPPL" TEXT='P(CA-UNIVMS.pipe)
/FUNCTION=WKLDEVENT /HOSTNAME=&NODEID /SEV=6 /MESSAGE="Shutdown at &day &datem
&time"'

```

Unicenter TNG Workload Agent Shutdown Message

```

del msgrec msgid="* SNMPTRAP: * * * * * 2401 * * * 1.3.6.1.4.1.791.2.8.4.2.3.5"
def msgrec cont=yes msgid="* SNMPTRAP: * * * * * 2401 * * *
1.3.6.1.4.1.791.2.8.4.2.3.5" DESC="Unicenter TNG Workload Agent Shutdown
message."
def msgact name=(*,5) action="DISCARD"
def msgact name=(*,*) action="EVALUATE" COLOR="GREEN" SEVERITY="I" TEXT="OpenVMS
Workload Shutdown &(16:) "
def msgact name=(*,*) action="SENDAPPL" TEXT='P(CA-UNIVMS.pipe)
/FUNCTION=WKLDXPLAT /HOSTNAME=&NODEID /SEV=6 /MESSAGE="Shutdown at &day &datem
&time"'

```

Workload Manager Event Message

```

delete msgrec msgid=" * SNMPTRAP: * * * * * 2402 * * *
1.3.6.1.4.1.791.2.8.4.2.1 * *"
def msgrec msgid=" * SNMPTRAP: * * * * * 2402 * * * 1.3.6.1.4.1.791.2.8.4.2.1 *
*" DESC="Workload Manager Event message"
def msgact name=(*,5) action="DISCARD"
def msgact name=(*,*) action="EVALUATE" COLOR="Default" SEVERITY="W"
TEXT="%%CASH_I_0499, &(18:) "

```

Unicenter TNG OpenVMS System Monitor Success Message

```

del msgrec msgid="* SNMPTRAP: * * * * * 2501 * * * 1.3.6.1.4.1.791.2.8.5.2.1.1"
def msgrec cont=yes msgid="* SNMPTRAP: * * * * * 2501 * * *
1.3.6.1.4.1.791.2.8.5.2.1.1" DESC="Unicenter TNG OpenVMS System Monitor success
message."
def msgact name=(*,5) action="DISCARD"
def msgact name=(*,*) action="EVALUATE" COLOR="GREEN" SEVERITY="I" TEXT="OpenVMS
System Monitor success &(16:) "
def msgact name=(*,*) action="SENDAPPL" TEXT='P(CA-UNIVMS.pipe)
/FUNCTION=SYSMONDAEMON /HOSTNAME=&NODEID /SEV=0 /MESSAGE="Started &day &datem
&time"'

```

Unicenter TNG OpenVMS System Monitor Event Daemon Success Message

```
del msgrec msgid="* SNMPTRAP: * * * * * 2501 * * * 1.3.6.1.4.1.791.2.8.5.2.1.2"
def msgrec cont=yes msgid="* SNMPTRAP: * * * * * 2501 * * *
  1.3.6.1.4.1.791.2.8.5.2.1.2" DESC="Unicenter TNG OpenVMS System Monitor Event
  Daemon success message."
def msgact name=(*,5) action="DISCARD"
def msgact name=(*,*) action="EVALUATE" COLOR="GREEN" SEVERITY="I" TEXT="OpenVMS
  System Monitor success &(16:) "
def msgact name=(*,*) action="SENDAPPL" TEXT='P(CA-UNIVMS.pipe)
  /FUNCTION=TNGEVENTDAEMON /HOSTNAME=&NODEID /SEV=0 /MESSAGE="Started &day &datem
  &time"'
```

Unicenter TNG OpenVMS System Monitor Failure Message

```
del msgrec msgid="* SNMPTRAP: * * * * * 2501 * * * 1.3.6.1.4.1.791.2.8.5.2.2"
def msgrec cont=yes msgid="* SNMPTRAP: * * * * * 2501 * * *
  1.3.6.1.4.1.791.2.8.5.2.2" DESC="Unicenter TNG OpenVMS System Monitor failure
  message."
def msgact name=(*,5) action="DISCARD"
def msgact name=(*,*) action="EVALUATE" COLOR="RED" SEVERITY="F" TEXT="OpenVMS
  System Monitor failure &(16:) "
def msgact name=(*,*) action="SENDAPPL" TEXT='P(CA-UNIVMS.pipe)
  /FUNCTION=SYSMONITOR /HOSTNAME=&NODEID /SEV=5 /Message="Failure: &(16:) "'
```

Unicenter TNG OpenVMS System Monitor Shutdown Message

```
del msgrec msgid="* SNMPTRAP: * * * * * 2501 * * * 1.3.6.1.4.1.791.2.8.5.2.3.1"
def msgrec cont=yes msgid="* SNMPTRAP: * * * * * 2501 * * *
  1.3.6.1.4.1.791.2.8.5.2.3.1" DESC="Unicenter TNG OpenVMS System Monitor
  Shutdown message."
def msgact name=(*,5) action="DISCARD"
def msgact name=(*,*) action="EVALUATE" COLOR="GREEN" SEVERITY="I" TEXT="OpenVMS
  System Monitor Shutdown &(16:) "
def msgact name=(*,*) action="SENDAPPL" TEXT='P(CA-UNIVMS.pipe)
  /FUNCTION=SYSMONDAEMON /HOSTNAME=&NODEID /SEV=6 /MESSAGE="Shutdown &day &datem
  &time"'
```

Unicenter TNG OpenVMS System Monitor Event Daemon Shutdown Message

```
del msgrec msgid="* SNMPTRAP: * * * * * 2501 * * * 1.3.6.1.4.1.791.2.8.5.2.3.2"
def msgrec cont=yes msgid="* SNMPTRAP: * * * * * 2501 * * *
  1.3.6.1.4.1.791.2.8.5.2.3.2" DESC="Unicenter TNG OpenVMS System Monitor Event
  Daemon Shutdown message."
def msgact name=(*,5) action="DISCARD"
def msgact name=(*,*) action="EVALUATE" COLOR="GREEN" SEVERITY="I" TEXT="OpenVMS
  System Monitor Shutdown &(16:) "
def msgact name=(*,*) action="SENDAPPL" TEXT='P(CA-UNIVMS.pipe)
  /FUNCTION=TNGEVENTDAEMON /HOSTNAME=&NODEID /SEV=6 /MESSAGE="Shutdown &day
  &datem &time"'
```

Unicenter TNG Startup Success Message

```
del msgrec msgid="* SNMPTRAP: * * * * * 2601 * * * 1.3.6.1.4.1.791.2.8.6.2.1.1"
def msgrec cont=yes msgid="* SNMPTRAP: * * * * * 2601 * * *
  1.3.6.1.4.1.791.2.8.6.2.1.1" DESC="Unicenter TNG Startup success message."
def msgact name=(*,5) action="DISCARD"
def msgact name=(*,*) action="EVALUATE" COLOR="GREEN" SEVERITY="I" TEXT="OpenVMS
  Gateway Daemon &(16:) "
def msgact name=(*,*) action="SENDAPPL" TEXT='P(CA-UNIVMS.pipe) /FUNCTION=COMMON
  /HOSTNAME=&NODEID /SEV=0 /Message="Started &day &datem &time "'
```

Unicenter TNG ENF Startup Success Message

```
del msgrec msgid="* SNMPTRAP: * * * * * 2601 * * * 1.3.6.1.4.1.791.2.8.6.2.1.2"
def msgrec cont=yes msgid="* SNMPTRAP: * * * * * 2601 * * *
  1.3.6.1.4.1.791.2.8.6.2.1.2" DESC="Unicenter TNG ENF Startup success message."
def msgact name=(*,5) action="DISCARD"
def msgact name=(*,*) action="EVALUATE" COLOR="GREEN" SEVERITY="I" TEXT="OpenVMS
  ENF Daemon &(16:) "
def msgact name=(*,*) action="SENDAPPL" TEXT='P(CA-UNIVMS.pipe) /FUNCTION=TNGENF
  /HOSTNAME=&NODEID /SEV=0 /Message="Started &day &datem &time "'
```

Unicenter TNG Message Startup Success Message

```
del msgrec msgid="* SNMPTRAP: * * * * * 2601 * * * 1.3.6.1.4.1.791.2.8.6.2.1.3"
def msgrec cont=yes msgid="* SNMPTRAP: * * * * * 2601 * * *
  1.3.6.1.4.1.791.2.8.6.2.1.3" DESC="Unicenter TNG Message Startup success
  message."
def msgact name=(*,5) action="DISCARD"
def msgact name=(*,*) action="EVALUATE" COLOR="GREEN" SEVERITY="I" TEXT="OpenVMS
  TNG Message Daemon &(16:) "
def msgact name=(*,*) action="SENDAPPL" TEXT='P(CA-UNIVMS.pipe) /FUNCTION=TNGCAM
  /HOSTNAME=&NODEID /SEV=0 /Message="Started &day &datem &time "'
```

Unicenter TNG File Transfer Startup Success Message

```
del msgrec msgid="* SNMPTRAP: * * * * * 2601 * * * 1.3.6.1.4.1.791.2.8.6.2.1.4"
def msgrec cont=yes msgid="* SNMPTRAP: * * * * * 2601 * * *
  1.3.6.1.4.1.791.2.8.6.2.1.4" DESC="Unicenter TNG File Transfer Startup success
  message."
def msgact name=(*,5) action="DISCARD"
def msgact name=(*,*) action="EVALUATE" COLOR="GREEN" SEVERITY="I" TEXT="OpenVMS
  TNG File Transfer Daemon &(16:) "
def msgact name=(*,*) action="SENDAPPL" TEXT='P(CA-UNIVMS.pipe) /FUNCTION=TNGCAFT
  /HOSTNAME=&NODEID /SEV=0 /Message="Started &day &datem &time "'
```

Unicenter TNG CCI Startup Success Message

```
del msgrec msgid="* SNMPTRAP: * * * * * 2601 * * * 1.3.6.1.4.1.791.2.8.6.2.1.5"
def msgrec cont=yes msgid="* SNMPTRAP: * * * * * 2601 * * *
  1.3.6.1.4.1.791.2.8.6.2.1.5" DESC="Unicenter TNG CCI Startup success message."
def msgact name=(*,5) action="DISCARD"
def msgact name=(*,*) action="EVALUATE" COLOR="GREEN" SEVERITY="I" TEXT="OpenVMS
  TNG CCI Daemon &(16:) "
def msgact name=(*,*) action="SENDAPPL" TEXT='P(CA-UNIVMS.pipe) /FUNCTION=TNGCCI
  /HOSTNAME=&NODEID /SEV=0 /Message="Started &day &datem &time "'
```

Unicenter TNG Startup Failure Message

```
del msgrec msgid="* SNMPTRAP: * * * * * 2601 * * * 1.3.6.1.4.1.791.2.8.6.2.2.1"
def msgrec cont=yes msgid="* SNMPTRAP: * * * * * 2601 * * *
  1.3.6.1.4.1.791.2.8.6.2.2.1" DESC="Unicenter TNG Startup failure message."
def msgact name=(*,5) action="DISCARD"
def msgact name=(*,*) action="EVALUATE" COLOR="RED" SEVERITY="F" TEXT="OpenVMS
  Gateway Daemon &(16:) "
def msgact name=(*,*) action="SENDAPPL" TEXT='P(CA-UNIVMS.pipe) /FUNCTION=COMMON
  /HOSTNAME=&NODEID /SEV=5 /Message="Failure: &(16:) "'
```

Unicenter TNG Shutdown Message

```
del msgrec msgid="* SNMPTRAP: * * * * * 2601 * * * 1.3.6.1.4.1.791.2.8.6.2.3.1"
def msgrec cont=yes msgid="* SNMPTRAP: * * * * * 2601 * * *
  1.3.6.1.4.1.791.2.8.6.2.3.1" DESC="Unicenter TNG Shutdown message."
def msgact name=(*,5) action="DISCARD"
def msgact name=(*,*) action="EVALUATE" COLOR="GREEN" SEVERITY="I" TEXT="OpenVMS
  Gateway Daemon Shutdown &(16:) "
def msgact name=(*,*) action="SENDAPPL" TEXT='P(CA-UNIVMS.pipe) /FUNCTION=COMMON
  /HOSTNAME=&NODEID /SEV=6 /Message="Shutdown &day &datem &time "'
```

Unicenter TNG ENF Shutdown Message

```
del msgrec msgid="* SNMPTRAP: * * * * * 2601 * * * 1.3.6.1.4.1.791.2.8.6.2.3.2"
def msgrec cont=yes msgid="* SNMPTRAP: * * * * * 2601 * * *
  1.3.6.1.4.1.791.2.8.6.2.3.2" DESC="Unicenter TNG ENF Shutdown message."
def msgact name=(*,5) action="DISCARD"
def msgact name=(*,*) action="EVALUATE" COLOR="GREEN" SEVERITY="I" TEXT="OpenVMS
  TNG ENF Daemon Shutdown &(16:) "
def msgact name=(*,*) action="SENDAPPL" TEXT='P(CA-UNIVMS.pipe) /FUNCTION=TNGENF
  /HOSTNAME=&NODEID /SEV=6 /Message="Shutdown &day &datem &time "'
```

Unicenter TNG Message Shutdown Message

```
del msgrec msgid="* SNMPTRAP: * * * * * 2601 * * * 1.3.6.1.4.1.791.2.8.6.2.3.3"
def msgrec cont=yes msgid="* SNMPTRAP: * * * * * 2601 * * *
  1.3.6.1.4.1.791.2.8.6.2.3.3" DESC="Unicenter TNG Message Shutdown message."
def msgact name=(*,5) action="DISCARD"
def msgact name=(*,*) action="EVALUATE" COLOR="GREEN" SEVERITY="I" TEXT="OpenVMS
  TNG Message Daemon Shutdown &(16:) "
def msgact name=(*,*) action="SENDAPPL" TEXT='P(CA-UNIVMS.pipe) /FUNCTION=TNGCAM
  /HOSTNAME=&NODEID /SEV=6 /Message="Shutdown &day &datem &time "'
```

Unicenter File Transfer Shutdown Message

```
del msgrec msgid="* SNMPTRAP: * * * * * 2601 * * * 1.3.6.1.4.1.791.2.8.6.2.3.4"
def msgrec cont=yes msgid="* SNMPTRAP: * * * * * 2601 * * *
  1.3.6.1.4.1.791.2.8.6.2.3.4" DESC="Unicenter File Transfer Shutdown message."
def msgact name=(*,5) action="DISCARD"
def msgact name=(*,*) action="EVALUATE" COLOR="GREEN" SEVERITY="I" TEXT="OpenVMS
  File Transfer Daemon Shutdown &(16:) "
def msgact name=(*,*) action="SENDAPPL" TEXT='P(CA-UNIVMS.pipe) /FUNCTION=TNGCAFT
  /HOSTNAME=&NODEID /SEV=6 /Message="Shutdown &day &datem &time "'
```

Unicenter TNG CCI Shutdown Message

```
del msgrec msgid="* SNMPTRAP: * * * * * 2601 * * * 1.3.6.1.4.1.791.2.8.6.2.3.5"
def msgrec cont=yes msgid="* SNMPTRAP: * * * * * 2601 * * *
  1.3.6.1.4.1.791.2.8.6.2.3.5" DESC="Unicenter TNG CCI Shutdown message."
def msgact name=(*,5) action="DISCARD"
def msgact name=(*,*) action="EVALUATE" COLOR="GREEN" SEVERITY="I" TEXT="OpenVMS
  TNG CCI Daemon Shutdown &(16:) "
def msgact name=(*,*) action="SENDAPPL" TEXT='P(CA-UNIVMS.pipe) /FUNCTION=TNGCCI
  /HOSTNAME=&NODEID /SEV=6 /Message="Shutdown &day &datem &time "'
```

OpenVMS OPCOM Event Message CRITICAL

```
delete msgrec msgid=" * SNMPTRAP: * * * * * 2202 * * * 1.3.6.1.4.1.791.2.8.2.2
  * * * 1"
def msgrec msgid=" * SNMPTRAP: * * * * * 2202 * * * 1.3.6.1.4.1.791.2.8.2.2 * *
  * 1" DESC="OpenVMS OPCOM Event message CRITICAL"
def msgact name=(*,5) action="DISCARD"
def msgact name=(*,*) action="EVALUATE" COLOR="RED" SEVERITY="F" TEXT="OPCOM
  CRITICAL event on node: &16 : &(18:) "
def msgact name=(*,*) action="SENDAPPL" TEXT='P(CA-UNIVMS.pipe) /EVENT
  /FUNCTION=CONSOLE /HOSTNAME=&16 /SEV=5 /Message="&(16:) "'
```

OpenVMS OPCOM Event Message MAJOR

```
delete msgrec msgid=" * SNMPTRAP: * * * * * 2202 * * * 1.3.6.1.4.1.791.2.8.2.2
* * * 2"
def msgrec msgid=" * SNMPTRAP: * * * * * 2202 * * * 1.3.6.1.4.1.791.2.8.2.2 * *
* 2" DESC="OpenVMS OPCOM Event message MAJOR"
def msgact name=(*,5) action="DISCARD"
def msgact name=(*,*) action="EVALUATE" COLOR="PURPLE" SEVERITY="E" TEXT="OPCOM
MAJOR event on node: &16 : &(18:) "
def msgact name=(*,*) action="SENDAPPL" TEXT='P(CA-UNIVMS.pipe) /EVENT
/FUNCTION=CONSOLE /HOSTNAME=&16 /SEV=4 /Message="&(16:) "'
```

OpenVMS OPCOM Event Message MINOR

```
delete msgrec msgid=" * SNMPTRAP: * * * * * 2202 * * * 1.3.6.1.4.1.791.2.8.2.2
* * * 3"
def msgrec msgid=" * SNMPTRAP: * * * * * 2202 * * * 1.3.6.1.4.1.791.2.8.2.2 * *
* 3" DESC="OpenVMS OPCOM Event message MINOR"
def msgact name=(*,5) action="DISCARD"
def msgact name=(*,*) action="EVALUATE" COLOR="ORANGE" SEVERITY="W" TEXT="OPCOM
MINOR event on node: &16 : &(18:) "
def msgact name=(*,*) action="SENDAPPL" TEXT='P(CA-UNIVMS.pipe) /EVENT
/FUNCTION=CONSOLE /HOSTNAME=&16 /SEV=3 /Message="&(16:) "'OpenVMS OPCOM Event
message WARNING
```

OpenVMS OPCOM Event Message WARNING

```
delete msgrec msgid=" * SNMPTRAP: * * * * * 2202 * * * 1.3.6.1.4.1.791.2.8.2.2
* * * 4"
def msgrec msgid=" * SNMPTRAP: * * * * * 2202 * * * 1.3.6.1.4.1.791.2.8.2.2 * *
* 4" DESC="OpenVMS OPCOM Event message WARNING."
def msgact name=(*,5) action="DISCARD"
def msgact name=(*,*) action="EVALUATE" COLOR="YELLOW" SEVERITY="W" TEXT="OPCOM
WARNING event on node: &16 : &(18:) "
def msgact name=(*,*) action="SENDAPPL" TEXT='P(CA-UNIVMS.pipe) /EVENT
/FUNCTION=CONSOLE /HOSTNAME=&16 /SEV=2 /Message="&(16:) "'
```

OpenVMS OPCOM Event Message CLEAR

```
del msgrec msgid=" * SNMPTRAP: * * * * * 2202 * * * 1.3.6.1.4.1.791.2.8.2.2 * *
* 5"
def msgrec msgid=" * SNMPTRAP: * * * * * 2202 * * * 1.3.6.1.4.1.791.2.8.2.2 * *
* 5" DESC="OpenVMS OPCOM Event message CLEAR"
def msgact name=(*,5) action="DISCARD"
def msgact name=(*,*) action="EVALUATE" COLOR="GREEN" SEVERITY="I" TEXT="OPCOM
CLEAR event on node: &16 : &(18:) "
def msgact name=(*,*) action="SENDAPPL" TEXT='P(CA-UNIVMS.pipe) /EVENT
/FUNCTION=CONSOLE /HOSTNAME=&16 /SEV=0 /Message="&(16:) "'
```

OpenVMS OPCOM Event Message INDETERMINATE

```

del msgrec msgid=" * SNMPTRAP: * * * * * 2202 * * * 1.3.6.1.4.1.791.2.8.2.2 * *
* 6"
def msgrec msgid=" * SNMPTRAP: * * * * * 2202 * * * 1.3.6.1.4.1.791.2.8.2.2 * *
* 6" DESC="OpenVMS OPCOM Event message INDETERMINATE"
def msgact name=(*,5) action="DISCARD"
def msgact name=(*,*) action="EVALUATE" COLOR="Default" SEVERITY="W" TEXT="OPCOM
INDETERMINATE event on node: &16 : &(18:) "
def msgact name=(*,*) action="SENDAPPL" TEXT='P(CA-UNIVMS.pipe) /EVENT
/FUNCTION=CONSOLE /HOSTNAME=&16 /SEV=1 /Message="&(16:) "'

```

CommandIT UNIX OPCOM Event Message CRITICAL

```

delete msgrec msgid=" * SNMPTRAP: * * * * * 2202 * * * 1.3.6.1.4.1.791.2.8.7.2
* * * 1"
def msgrec msgid=" * SNMPTRAP: * * * * * 2202 * * * 1.3.6.1.4.1.791.2.8.7.2 * *
* 1" DESC="CommandIT UNIX OPCOM Event message CRITICAL"
def msgact name=(*,5) action="DISCARD"
def msgact name=(*,*) action="EVALUATE" COLOR="RED" SEVERITY="F" TEXT="CommandIT
UNIX OPCOM event on node: &16 : &(18:) "
def msgact name=(*,*) action="SENDAPPL" TEXT='P(CA-UNIVMS.pipe) /EVENT
/FUNCTION=CONSOLEUNIX /HOSTNAME=&16 /SEV=5 /Message="&(16:) "'

```

CommandIT UNIX OPCOM Event Message MAJOR

```

delete msgrec msgid=" * SNMPTRAP: * * * * * 2202 * * * 1.3.6.1.4.1.791.2.8.7.2
* * * 2"
def msgrec msgid=" * SNMPTRAP: * * * * * 2202 * * * 1.3.6.1.4.1.791.2.8.7.2 * *
* 2" DESC="CommandIT UNIX OPCOM Event message MAJOR"
def msgact name=(*,5) action="DISCARD"
def msgact name=(*,*) action="EVALUATE" COLOR="PURPLE" SEVERITY="E"
TEXT="CommandIT UNIX OPCOM event on node: &16 : &(18:) "
def msgact name=(*,*) action="SENDAPPL" TEXT='P(CA-UNIVMS.pipe) /EVENT
/FUNCTION=CONSOLEUNIX /HOSTNAME=&16 /SEV=4 /Message="&(16:) "'

```

CommandIT UNIX OPCOM Event Message MINOR

```

delete msgrec msgid=" * SNMPTRAP: * * * * * 2202 * * * 1.3.6.1.4.1.791.2.8.7.2
* * * 3"
def msgrec msgid=" * SNMPTRAP: * * * * * 2202 * * * 1.3.6.1.4.1.791.2.8.7.2 * *
* 3" DESC="CommandIT UNIX OPCOM Event message MINOR"
def msgact name=(*,5) action="DISCARD"
def msgact name=(*,*) action="EVALUATE" COLOR="ORANGE" SEVERITY="W"
TEXT="CommandIT UNIX OPCOM event on node: &16 : &(18:) "
def msgact name=(*,*) action="SENDAPPL" TEXT='P(CA-UNIVMS.pipe) /EVENT
/FUNCTION=CONSOLEUNIX /HOSTNAME=&16 /SEV=3 /Message="&(16:) "'

```

CommandIT UNIX OPCOM Event Message WARNING

```
delete msgrec msgid=" * SNMPTRAP: * * * * * 2202 * * * 1.3.6.1.4.1.791.2.8.7.2
* * * 4"
def msgrec msgid=" * SNMPTRAP: * * * * * 2202 * * * 1.3.6.1.4.1.791.2.8.7.2 * *
* 4" DESC="CommandIT UNIX OPCOM Event message WARNING"
def msgact name=(*,5) action="DISCARD"
def msgact name=(*,*) action="EVALUATE" COLOR="YELLOW" SEVERITY="W"
TEXT="CommandIT UNIX OPCOM event on node: &16 : &(18:) "
def msgact name=(*,*) action="SENDAPPL" TEXT='P(CA-UNIVMS.pipe) /EVENT
/FUNCTION=CONSOLEUNIX /HOSTNAME=&16 /SEV=2 /Message="&(16:) "'
CommandIT UNIX OPCOM Event message CLEAR
```

CommandIT UNIX OPCOM Event Message CLEAR

```
delete msgrec msgid=" * SNMPTRAP: * * * * * 2202 * * * 1.3.6.1.4.1.791.2.8.7.2
* * * 5"
def msgrec msgid=" * SNMPTRAP: * * * * * 2202 * * * 1.3.6.1.4.1.791.2.8.7.2 * *
* 5" DESC="CommandIT UNIX OPCOM Event message CLEAR"
def msgact name=(*,5) action="DISCARD"
def msgact name=(*,*) action="EVALUATE" COLOR="GREEN" SEVERITY="I"
TEXT="CommandIT UNIX OPCOM event on node: &16 : &(18:) "
def msgact name=(*,*) action="SENDAPPL" TEXT='P(CA-UNIVMS.pipe) /EVENT
/FUNCTION=CONSOLEUNIX /HOSTNAME=&16 /SEV=0 /Message="&(16:) "'
```

CommandIT UNIX OPCOM Event Message INDETERMINATE

```
delete msgrec msgid=" * SNMPTRAP: * * * * * 2202 * * * 1.3.6.1.4.1.791.2.8.7.2
* * * 6"
def msgrec msgid=" * SNMPTRAP: * * * * * 2202 * * * 1.3.6.1.4.1.791.2.8.7.2 * *
* 6" DESC="CommandIT UNIX OPCOM Event message INDETERMINATE"
def msgact name=(*,5) action="DISCARD"
def msgact name=(*,*) action="EVALUATE" COLOR="Default" SEVERITY="W"
TEXT="CommandIT UNIX OPCOM event on node: &16 : &(18:) "
def msgact name=(*,*) action="SENDAPPL" TEXT='P(CA-UNIVMS.pipe) /EVENT
/FUNCTION=CONSOLEUNIX /HOSTNAME=&16 /SEV=1 /Message="&(16:) "'
```

OpenVMS System Monitor Event Message FATAL

```
delete msgrec msgid=" * SNMPTRAP: * * * * * 2502 * * * 1.3.6.1.4.1.791.2.8.5.2
* * * 0"
def msgrec msgid=" * SNMPTRAP: * * * * * 2502 * * * 1.3.6.1.4.1.791.2.8.5.2 * *
* 0" DESC="OpenVMS System Monitor Event message FATAL"
def msgact name=(*,5) action="DISCARD"
def msgact name=(*,*) action="EVALUATE" COLOR="RED" SEVERITY="F" TEXT="System
FATAL event on node: &16 : &(18:) "
def msgact name=(*,*) action="SENDAPPL" TEXT='P(CA-UNIVMS.pipe) /EVENT
/FUNCTION=SYSMONITOR /HOSTNAME=&16 /SEV=5 /Message="&(16:) "'
```

OpenVMS System Monitor Event Message ERROR.

```
delete msgrec msgid=" * SNMPTRAP: * * * * * 2502 * * * 1.3.6.1.4.1.791.2.8.5.2
* * * 1"
def msgrec msgid=" * SNMPTRAP: * * * * * 2502 * * * 1.3.6.1.4.1.791.2.8.5.2 * *
* 1" DESC="OpenVMS System Monitor Event message ERROR."
def msgact name=(*,5) action="DISCARD"
def msgact name=(*,*) action="EVALUATE" COLOR="PURPLE" SEVERITY="E" TEXT="System
ERROR event on node: &16 : &(18:) "
def msgact name=(*,*) action="SENDAPPL" TEXT='P(CA-UNIVMS.pipe) /EVENT
/FUNCTION=SYSMONITOR /HOSTNAME=&16 /SEV=4 /Message="&(16:) "'
```

OpenVMS System Monitor Event Message WARNING

```
delete msgrec msgid=" * SNMPTRAP: * * * * * 2502 * * * 1.3.6.1.4.1.791.2.8.5.2
* * * 2"
def msgrec msgid=" * SNMPTRAP: * * * * * 2502 * * * 1.3.6.1.4.1.791.2.8.5.2 * *
* 2" DESC="OpenVMS System Monitor Event message WARNING."
def msgact name=(*,5) action="DISCARD"
def msgact name=(*,*) action="EVALUATE" COLOR="ORANGE" SEVERITY="W" TEXT="System
WARNING event on node: &16 : &(18:) "
def msgact name=(*,*) action="SENDAPPL" TEXT='P(CA-UNIVMS.pipe) /EVENT
/FUNCTION=SYSMONITOR /HOSTNAME=&16 /SEV=2 /Message="&(16:) "'
```

OpenVMS System Monitor Event Message INFORMATION

```
delete msgrec msgid=" * SNMPTRAP: * * * * * 2502 * * * 1.3.6.1.4.1.791.2.8.5.2
* * * 3"
def msgrec msgid=" * SNMPTRAP: * * * * * 2502 * * * 1.3.6.1.4.1.791.2.8.5.2 * *
* 3" DESC="OpenVMS System Monitor Event message INFORMATION"
def msgact name=(*,5) action="DISCARD"
def msgact name=(*,*) action="EVALUATE" COLOR="Default" SEVERITY="W" TEXT="System
INFORMATION event on node: &16 : &(23:) "
def msgact name=(*,*) action="SENDAPPL" TEXT='P(CA-UNIVMS.pipe) /EVENT
/FUNCTION=SYSMONITOR /HOSTNAME=&16 /SEV=0 /Message="&(16:) "'
```

OpenVMS System Monitor Event Message SUCCESS

```
delete msgrec msgid=" * SNMPTRAP: * * * * * 2502 * * * 1.3.6.1.4.1.791.2.8.5.2
* * * 4"
def msgrec msgid=" * SNMPTRAP: * * * * * 2502 * * * 1.3.6.1.4.1.791.2.8.5.2 * *
* 4" DESC="OpenVMS System Monitor Event message SUCCESS."
def msgact name=(*,5) action="DISCARD"
def msgact name=(*,*) action="EVALUATE" COLOR="GREEN" SEVERITY="I" TEXT="System
SUCCESS event on node: &16 : &(18:) "
def msgact name=(*,*) action="SENDAPPL" TEXT='P(CA-UNIVMS.pipe) /EVENT
/FUNCTION=SYSMONITOR /HOSTNAME=&16 /SEV=0 /Message="&(16:) "'
```

Unicenter TNG OpenVMS GLOBAL Event Message ERROR

```
delete msgrec msgid=" * SNMPTRAP: * * * * * 2602 * * * 1.3.6.1.4.1.791.2.8.6.2
* * "
def msgrec msgid=" * SNMPTRAP: * * * * * 2602 * * * 1.3.6.1.4.1.791.2.8.6.2 * *
" DESC="Unicenter TNG OpenVMS GLOBAL Event message ERROR."
def msgact name=(*,5) action="DISCARD"
def msgact name=(*,*) action="EVALUATE" COLOR="RED" SEVERITY="F" TEXT=" &(16:) "
```

Unicenter TNG OpenVMS GLOBAL Command ERROR

```
delete msgrec msgid="* SNMPTRAP: * * * * * 2603 * * * .3.6.1.4.1.791.2.8.6.2.1"
def msgrec msgid="* SNMPTRAP: * * * * * 2603 * * * 1.3.6.1.4.1.791.2.8.6.2.1"
DESC="Unicenter TNG OpenVMS GLOBAL Command ERROR."
def msgact name=(*,5) action="DISCARD"
def msgact name=(*,*) action="EVALUATE" COLOR="RED" SEVERITY="F" TEXT=" &(16:) "
```

Unicenter TNG OpenVMS GLOBAL Command Message

```
delete msgrec msgid="* SNMPTRAP: * * * * * 2603 * * *
1.3.6.1.4.1.791.2.8.6.2.2"
def msgrec msgid="* SNMPTRAP: * * * * * 2603 * * * 1.3.6.1.4.1.791.2.8.6.2.2"
DESC="Unicenter TNG OpenVMS GLOBAL Command message"
def msgact name=(*,5) action="DISCARD"
def msgact name=(*,*) action="EVALUATE" COLOR="GREEN" SEVERITY="I" TEXT="
&(16:) "
```

Unicenter TNG OpenVMS GLOBAL Command Result Text

```
delete msgrec msgid="* SNMPTRAP: * * * * * 2603 * * *
1.3.6.1.4.1.791.2.8.6.2.3"
def msgrec msgid="* SNMPTRAP: * * * * * 2603 * * * 1.3.6.1.4.1.791.2.8.6.2.3"
DESC="Unicenter TNG OpenVMS GLOBAL Command result text"
def msgact name=(*,5) action="DISCARD"
def msgact name=(*,*) action="EVALUATE" COLOR="Default" SEVERITY="I" TEXT="
&(16:) "
```

Unicenter TNG OpenVMS IVP Command

```
delete msgrec msgid="OPENVMS_IVP"
def msgrec msgid="OPENVMS_IVP" DESC="Unicenter TNG OpenVMS IVP Command"
def msgact name=(*,5) action="DISCARD"
def msgact name=(*,*) action="SENDOPER" COLOR="BLUE" SEVERITY="I" TEXT=" OpenVMS
IVP Request from &nodeid has been received. "
def msgact name=(*,*) action="COMMAND" COLOR="Default" SEVERITY="I" TEXT=" vmscmd
&nodeid copy nl: &2 "
def msgact name=(*,*) action="SENDOPER" COLOR="BLUE" SEVERITY="I" TEXT=" &opnode
has responded to OpenVMS IVP Request. "
```

Index

A

agent

- NSM log, 1-3
- NSM Oracle, 1-3
- NSM Oracle Rdb, 1-4
- NSM System, 1-3
- Universal Job Management, 1-4

B

- Business Process Views
 - 2D Map, 2-5

C

CA Common Services

- starting, 4-1
- stopping, 4-1
- understanding, 2-1

CATRAP

- on other Unicenter platforms, A-2

CCS

- Enterprise Discovery, 2-3
- Runtime Component, 2-2
- Software Development Kit, 2-2
- WorldView, 2-4

CCS for OpenVMS

- on Windows, 3-3

classes

- view or modify, 2-8

Common Object Repository

- storage of objects that represent business resources, 2-10

Console Management

- for OpenVMS, 1-2

create new classes

- class editor, 2-9

D

Dynamic Business Process View

- to create, 2-10
- to setup a query, 2-10

J

- Job Management, for OpenVMS, 1-2

M

modifying classes

- class editor, 2-9
- class specification:, 2-8

O

objects

- displayed on the maps, 2-7
- severity level, 2-10

P

- Performance Management, for OpenVMS, 1-2

Populate Repository

- TRIX, 2-12

S

- severity levels
 - object, 2-10
- siblings
 - billboard, 2-10
- SNMP traps, C-1
- starting
 - CA Common Services, 4-1
- stopping
 - CA Common Services, 4-1
- System Monitoring Option, for OpenVMS, 1-3

T

- the billboard
 - to change the severity level of objects, 2-10
- Traps, SNMP, C-1

U

- Unicenter
 - Console Management for OpenVMS, 1-2
 - Job Management for OpenVMS, 1-2
 - NSM Database Monitoring, 1-3
 - Oracle agent, 1-3
 - Oracle Rdb agent, 1-4
 - NSM options for OpenVMS, 1-3
 - NSM System Monitoring Agent: , 1-3
 - NSM System Monitoring: , 1-3
 - NSM System MonitoringSystem Agent: , 1-3
 - Performance Management for OpenVMS, 1-2
 - Universal Job Management agent, 1-4
 - Watchdog for OpenVMS, 1-2
- Unicenter Performance Agent for OpenVMS installation, B-1

V

- viewing classes
 - class specification
- Virtual Reality
 - real time representation of the network, 2-6
- vmscmd
 - define an action, 3-4

W

- workload schedules
 - graphical representation, tracking, 3-5
- WorldView
 - objects, 2-4