

# CA ARCserve® Backup for Windows

**Agent for Sybase Guide**

r12



This documentation and any related computer software help programs (hereinafter referred to as the "Documentation") is for the end user's informational purposes only and is subject to change or withdrawal by CA at any time.

This Documentation may not be copied, transferred, reproduced, disclosed, modified or duplicated, in whole or in part, without the prior written consent of CA. This Documentation is confidential and proprietary information of CA and protected by the copyright laws of the United States and international treaties.

Notwithstanding the foregoing, licensed users may print a reasonable number of copies of the Documentation for their own internal use, and may make one copy of the related software as reasonably required for back-up and disaster recovery purposes, provided that all CA copyright notices and legends are affixed to each reproduced copy. Only authorized employees, consultants, or agents of the user who are bound by the provisions of the license for the Product are permitted to have access to such copies.

The right to print copies of the Documentation and to make a copy of the related software is limited to the period during which the applicable license for the Product remains in full force and effect. Should the license terminate for any reason, it shall be the user's responsibility to certify in writing to CA that all copies and partial copies of the Documentation have been returned to CA or destroyed.

EXCEPT AS OTHERWISE STATED IN THE APPLICABLE LICENSE AGREEMENT, TO THE EXTENT PERMITTED BY APPLICABLE LAW, CA PROVIDES THIS DOCUMENTATION "AS IS" WITHOUT WARRANTY OF ANY KIND, INCLUDING WITHOUT LIMITATION, ANY IMPLIED WARRANTIES OF MERCHANTABILITY, FITNESS FOR A PARTICULAR PURPOSE OR NONINFRINGEMENT. IN NO EVENT WILL CA BE LIABLE TO THE END USER OR ANY THIRD PARTY FOR ANY LOSS OR DAMAGE, DIRECT OR INDIRECT, FROM THE USE OF THIS DOCUMENTATION, INCLUDING WITHOUT LIMITATION, LOST PROFITS, BUSINESS INTERRUPTION, GOODWILL, OR LOST DATA, EVEN IF CA IS EXPRESSLY ADVISED OF SUCH LOSS OR DAMAGE.

The use of any product referenced in the Documentation is governed by the end user's applicable license agreement.

The manufacturer of this Documentation is CA.

Provided with "Restricted Rights." Use, duplication or disclosure by the United States Government is subject to the restrictions set forth in FAR Sections 12.212, 52.227-14, and 52.227-19(c)(1) - (2) and DFARS Section 252.227-7014(b)(3), as applicable, or their successors.

All trademarks, trade names, service marks, and logos referenced herein belong to their respective companies.

Copyright © 2008 CA. All rights reserved.

## CA Product References

This documentation set references the following CA products:

- Advantage™ Ingres®
- BrightStor® ARCserve® Backup for Laptops and Desktops
- BrightStor® CA-1® Tape Management
- BrightStor® CA-Dynam®/B Backup for VM
- BrightStor® CA-Dynam®/TLMS Tape Management
- BrightStor® CA-Vtape™ Virtual Tape System
- BrightStor® Enterprise Backup
- BrightStor® High Availability
- BrightStor® Storage Resource Manager
- BrightStor® VM:Tape®
- CA ARCserve® Backup Agent for Novell Open Enterprise Server for Linux
- CA ARCserve® Backup Agent for Open Files on NetWare
- CA ARCserve® Backup Agent for Open Files on Windows
- CA ARCserve® Backup Client Agent for FreeBSD
- CA ARCserve® Backup Client Agent for Linux
- CA ARCserve® Backup Client Agent for Mainframe Linux
- CA ARCserve® Backup Client Agent for NetWare
- CA ARCserve® Backup Client Agent for UNIX
- CA ARCserve® Backup Client Agent for Windows
- CA ARCserve® Backup Enterprise Option for AS/400
- CA ARCserve® Backup Enterprise Option for Open VMS
- CA ARCserve® Backup for Windows
- CA ARCserve® Backup for Windows Agent for IBM Informix
- CA ARCserve® Backup for Windows Agent for Lotus Domino
- CA ARCserve® Backup for Windows Agent for Microsoft Data Protection Manager
- CA ARCserve® Backup for Windows Agent for Microsoft Exchange
- CA ARCserve® Backup for Windows Agent for Microsoft SharePoint

- CA ARCserve® Backup for Windows Agent for Microsoft SQL Server
- CA ARCserve® Backup for Windows Agent for Oracle
- CA ARCserve® Backup for Windows Agent for Sybase
- CA ARCserve® Backup for Windows Agent for VMware
- CA ARCserve® Backup for Windows Disaster Recovery Option
- CA ARCserve® Backup for Windows Disk to Disk to Tape Option
- CA ARCserve® Backup for Windows Enterprise Module
- CA ARCserve® Backup for Windows Enterprise Option for IBM 3494
- CA ARCserve® Backup for Windows Enterprise Option for SAP R/3 for Oracle
- CA ARCserve® Backup for Windows Enterprise Option for StorageTek ACSLS
- CA ARCserve® Backup for Windows Image Option
- CA ARCserve® Backup for Windows Microsoft Volume Shadow Copy Service
- CA ARCserve® Backup for Windows NDMP NAS Option
- CA ARCserve® Backup for Windows Serverless Backup Option
- CA ARCserve® Backup for Windows Storage Area Network (SAN) Option
- CA ARCserve® Backup for Windows Tape Library Option
- CA XOSoft™ Assured Recovery™
- CA XOSoft™
- Common Services™
- eTrust® Antivirus
- eTrust® Firewall
- Unicenter® Network and Systems Management
- Unicenter® Software Delivery
- Unicenter® VM: Operator®

## Contact Technical Support

For online technical assistance and a complete list of locations, primary service hours, and telephone numbers, contact Technical Support at <http://ca.com/support>.

# Contents

---

<b>Chapter 1: Introducing the Agent</b>	<b>7</b>
How the Agent Works .....	8
How the Backup Process Works .....	8
Backup Agent RPC Server Service .....	9
User IDs, Passwords, and Remote Database Servers .....	9
Customize the Agent in the Windows Registry .....	10
<b>Chapter 2: Installing the Agent</b>	<b>11</b>
Installation Prerequisites .....	11
Install the Agent .....	12
Configure the Agent for Multiple Instances .....	13
Upgrade from CA ARCserve2000 Issues .....	14
<b>Chapter 3: Using the Agent</b>	<b>15</b>
Back Up Strategies .....	15
The Agent Logs .....	15
Transaction Log Backups .....	16
Back Up Databases or Transaction Logs .....	17
Verify the Backup .....	18
Access Client List (ACL) .....	19
Restore .....	20
Restore a Sybase Database .....	20
How Sybase Adaptive Server Security Works .....	23
Recover the Master Database .....	24
How the Agent Restores Dropped Databases .....	24
Disaster Recovery .....	25
Recover Sybase Adaptive Server Databases .....	25
Ensure Databases Consistency .....	25
<b>Appendix A: Troubleshooting</b>	<b>27</b>
Log Files .....	27
Error Messages .....	27
<b>Index</b>	<b>35</b>



# Chapter 1: Introducing the Agent

---

CA ARCserve Backup is a comprehensive storage solution for applications, databases, distributed servers, and file systems. It provides backup and restore capabilities for databases, business-critical applications, and network clients.

Among the agents CA ARCserve Backup offers is the CA ARCserve Backup Agent for Sybase. Using this agent, you can:

- Back up Sybase Adaptive Server databases and transaction logs using CA ARCserve Backup without taking your database offline or preventing users from adding new data to it.
- Restore Sybase Adaptive Server databases and transaction logs using CA ARCserve Backup.
- Access, back up, and restore multiple Sybase Adaptive Server instances.

The agent handles all communications between CA ARCserve Backup and the database server during backup and restore jobs, including preparing, retrieving, and processing the data packets that are sent back and forth between the database server and CA ARCserve Backup.

**Note:** Sybase Adaptive Server has built-in capabilities to back up databases that are online. However, it can only back up online databases to the local database server. It cannot back up online databases to other media.

Using CA ARCserve Backup, the agent can back up to any medium available to CA ARCserve Backup.

This section contains the following topics:

[How the Agent Works](#) (see page 8)

[User IDs, Passwords, and Remote Database Servers](#) (see page 9)

[Customize the Agent in the Windows Registry](#) (see page 10)

## How the Agent Works

The agent must be installed on the same server as the Sybase Adaptive Server. After installation, the Sybase Adaptive Server treats the agent as if it were a user requesting data.

During a backup, the agent acts as a transporting agent. Using the Sybase Adaptive Server Dump Database and Transaction backup method (more simply known as *dump*), the agent retrieves databases or log files in data chunks, one at a time, and writes the data to CA ARCserve Backup. CA ARCserve Backup backs up the data to media.

For information on the Sybase Adaptive Server dump command, see the *Sybase Adaptive Server System Administrator Guide*.

## How the Backup Process Works

While backing up data the system performs the following actions:

- The user issues a request to CA ARCserve Backup.
- CA ARCserve Backup forwards the request to the agent.
- The agent instructs the server, using the database API, to perform the dump on a particular database or log.
- The server returns the data from the database to the agent buffer, one chunk at a time.
- The agent receives the data from its buffer and transfers it to CA ARCserve Backup.
- CA ARCserve Backup writes the data to the media device, depending on the backup destination selection.

This process is repeated until the entire selected database or log files have been backed up. The agent and the Sybase Adaptive Server dump function guarantee the consistency and accuracy of the database or transaction log backup.



## Backup Agent RPC Server Service

The Agent for Sybase contains one service, the Backup Agent RPC (Remote Procedure Call) Server service.

The CA ARCserve Backup Agent RPC Server service, which lets the agent support remote backup and restore in the Sybase Adaptive Server, operates as a Windows service. You can configure it in the Windows Services Control Manager to start automatically.

### To check the Backup Agent RPC Server service status

1. From the Windows Start button, select Control Panel, Administrative Tools, Services.
2. Click the CA ARCserve Backup Agent RPC Server service icon.  
The dialog displays the current mode of the service.
3. To start or stop the service, highlight the Backup Agent RPC Server service icon and click Start or Stop, respectively.

## User IDs, Passwords, and Remote Database Servers

CA ARCserve Backup prompts the user for a default user name and password when it submits a job that includes remote Windows database servers. CA ARCserve Backup accesses the remote servers using this user name and password.

A remote Sybase Adaptive Server user ID and password are also required to access the remote database server. When prompted by the system, you should enter the Sybase Adaptive Server user ID **sa** (System Administrator) and the corresponding password, or an ID and password with equivalent privileges.

## Customize the Agent in the Windows Registry

You can customize the agent by modifying parameters in the Windows Registry using the Windows 2000, or Windows 2003 Regedit32 or Regedit utility.

You can find the agent parameters listed in the registry under the following key:

```
HKEY_LOCAL_MACHINE\Software\ComputerAssociates\CA ARCserve  
Backup\DSAgent\CurrentVersion\agent\dbasyb@SYBASE_INSTANCE_NAME
```

The agent has the following modifiable registry parameters:

- **Debug**—Enables debug trace files for the agent. Change the default value only if instructed to by a CA technical support engineer. The default value is 0 (FALSE).
- **StripeNum**—Specifies the stripe number used during backup with a value from 1 to 16. The value depends on your hardware configuration, such as the number of CPUs, total memory, and the number of tape drives. The default value is 4.
- **TbIStripeNum**—Reserved.
- **Dll**—Specifies the location of the agent executable DLL file.
- **Connect\_wait\_time**—Specifies the maximum time the agent waits for a valid connection with Sybase Adaptive Server. The default value is 10 seconds.
- **Max\_pipe\_wait\_time**—Specifies the maximum time the agent waits for a valid Named Pipe for backup and restore. The default value is 400.
- **RestoreDir**—Sets the path database devices are restored to. The default value is database. Set this parameter to restore dropped database devices to a location other than the Sybase Adaptive Server home directory.

You must stop and then start the Backup Agent RPC Server service for registry parameter changes to take effect.

# Chapter 2: Installing the Agent

---

The Agent for Sybase is a client program you install on the server machine with Sybase Adaptive Server.

This chapter lists the installation prerequisites for the agent and provides an installation checklist you can use to guide your installation.

For instructions on installing the agent, see the *Installation Guide*.

This section contains the following topics:

[Installation Prerequisites](#) (see page 11)

[Install the Agent](#) (see page 12)

[Configure the Agent for Multiple Instances](#) (see page 13)

[Upgrade from CA ARCserve2000 Issues](#) (see page 14)

## Installation Prerequisites

Before installing Agent for Sybase, verify that:

- The following applications are installed and working properly:
  - CA ARCserve Backup r12
  - Windows 2000, or Windows 2003
  - The appropriate version of Sybase with Sybase Open Client Library
- Your system meets the minimum software requirements to install the agent. For a list of requirements, see the Readme file.
- You have administrator privileges or the proper authority to install software on the computers on which you are installing the agent.
- You know the names of all the Sybase instances that you want the agent to work with.
- If you do not use the default installation path, make a note of the installation path you use for easy reference.

Contact your CA ARCserve Backup administrator to obtain administrator privileges and your Sybase administrator to obtain the Sybase instance names if you do not have them.

## Install the Agent

You must install the agent on the same computer as the Sybase Adaptive Server. However, you do not need to install the agent on a computer that has CA ARCserve Backup installed on it.

**Important!** Since the agent must interact with the Sybase Adaptive Server, its performance is dependent on the efficiency of the Sybase Backup Server Archive API used by the agent.

You should install the agent using **sa** (system administrator) or its equivalent as the login ID. You can use another user ID, provided it has backup and restore privileges on the required databases and select privileges for the system tables in the master database. The agent also supports integrated login, provided that this login is administrator equivalent.

Note: Integrated login is supported on local computer where both the CA ARCserve Backup and the Sybase Agent are installed.

Run Dbacfg.exe in the agent home directory or the CA ARCserve Backup Agent for Sybase Configuration utility to reset or update the login ID and password, if necessary.

For detailed information about how to install the agent, see the *Installation Guide*.

## Configure the Agent for Multiple Instances

The Agent allows you to back up and restore multiple instances of Sybase Adaptive Server.

### To configure the agent to support multiple Sybase instances

1. Select Start, Programs, CA, ARCserve Backup Agents, and Sybase Agent configuration. The following dialog appears:

Instance Name	Login ID	Password	Confirm password
Server1	sa	****	****
Server2	sa	****	****
Click here to add a new Instance Account			

2. Enter the requested information in the fields provided for each unique instance of Sybase Adaptive Server operation.
3. Click Finish.

The Agent is configured to support backup or restore of multiple Sybase instances.

## Upgrade from CA ARCserve2000 Issues

You can upgrade both the CA ARCserve Backup and the Sybase agent from BrightStor® ARCserve2000 to r12. The backup jobs submitted to BrightStor ARCserve2000 Sybase agent are executed correctly only if there is one Sybase instance.

If you configure multiple Sybase instances after upgrading from BrightStor ARCserve2000 to r12, the backup job may not be executed as expected. CA ARCserve Backup uses the first instance available in the registry to backup. In this case, we strongly suggest you submit the backup job again to eliminate confusion.

# Chapter 3: Using the Agent

---

Using the Agent for Sybase, you can backup and restore Sybase Adaptive Server databases while they are active and online. This chapter provides information about backing up and restoring using the agent.

This section contains the following topics:

[Back Up Strategies](#) (see page 15)

[Restore](#) (see page 20)

[Disaster Recovery](#) (see page 25)

## Back Up Strategies

You can use the agent to back up whole databases or their transaction logs. When you initiate a backup, the agent backs up:

- Only the transaction logs if you select the Backup Transaction Log option.
- Only the database if you select the Backup Database option.

**Important!** Avoid backing up the physical database and log files using CA ARCserve Backup without the agent if Sybase Server is online. The backed up image of the database file can be inconsistent. If you attempt to restore from such a backup image while the database is loaded, you can corrupt the database.

## The Agent Logs

The agent includes an activity log with information about backup or restore jobs and their status. The agent log is called sybagntd.log and is located in the directory in which the agent has been installed. If errors appear in the CA ARCserve Backup job logs, check the agent log for more information about why the errors occurred.

## Transaction Log Backups

A transaction log is a listing of all the transactions occurring on a given database from a given point in time. To ensure that backup files contain the most current transactions, you should back up your transaction logs more frequently than your databases. For example, you could back up a transaction log once a day and the entire database once a week. If you need to restore the database, the most currently backed up transaction would be no more than twenty-four hours old. More frequent transaction log backups would give you files with transactions that are even more current.

**Note:** The agent gives you the ability to back up log files separately from their corresponding databases only if the log files and the database files on your system are on separate Sybase devices.

Backing up a transaction log takes less time and uses less storage space than backing up a database, so it is an efficient way of keeping your backup files current. To back up a transaction log only, you would select the Backup Transaction Log option during backup job setup. A transaction log backup, like a database backup, can take place while the database is active.

**Important!** Do not back up a transaction log unless the database has already been backed up at least once.

It takes longer to recover a database when you restore the database and all transaction logs sequentially than it does when you restore only the database. Finding the correct strategy depends on your environment. The time required to perform backups must be considered in relation to the time required to restore.

## Truncate Transaction Logs During Backup

To decrease the size of a transaction log, you can choose to truncate the transaction log when you back it up. When the agent backs up a transaction log without truncating it, the agent backs up the log from the last successfully executed log backup to the current end of the log. The backup includes both the active and inactive portions of the log file. If you choose to truncate the log during backup, the agent removes the inactive portion of the log and truncates the log to the beginning of its active portion, the part that contains the oldest open transaction.



## Back Up Databases or Transaction Logs

You can back up databases or transaction logs using the following procedure.

**Note:** The agent limits the database name to no more than 30 bytes. Hence, you can use a name that has approximately 30 characters in length.

### To back up one or more databases or transaction logs

1. Open CA ARCserve Backup Manager.
2. In the Source window of the Backup Manager, select the databases to back up.

**Note:** Each database appears in the tree displayed by the Backup Manager as a separate object. When you prepare a backup, you should choose each object separately. To back up transaction logs only, select the databases whose transaction logs you want to back up.

3. Right-click in the Source window and select Agent Options.

The Backup Agent Backup Option dialog appears, as shown in the following example:



4. To back up the entire database, including the transaction log, select the Backup Database option and the Backup Transaction Log option. To back up transaction logs only, select the Backup Transaction Log option.
5. To truncate the transaction log, select Truncate. If you do not want to truncate the transaction log, select No Truncate. Truncate is the default.
6. Click OK.

**Note:** A database has at least one data file. It can have no log files, one log file, or more than one log file. A typical database shares its data area with other databases in one or more large data files. These files can be stored anywhere. You do not need to worry about where the files are actually stored, only about selecting the databases you want to back up.

For more information on explicit job packaging, see Packaging Your Jobs, in the chapter “CA ARCserve Backup Basics”, in the *Installation Guide*.

## Verify the Backup

To verify that a backup has been successful, check the Activity Log in CA ARCserve Backup. The Activity Log records backup events, their dates, and times.

### To verify the backup

1. Open the Job Status Manager in CA ARCserve Backup.
2. Select the Activity Log tab.

The Activity Log appears. Verify the backup in the Activity Log.

**Note:** The Activity Log identifies database and log backups by displaying the names of individual databases in the format Server Name\Database Name.

## Access Client List (ACL)

You use the Access Client Lists to identify the specific remote CA ARCserve Backup servers permitted to back up a Sybase database. If the CA ARCserve® Backup Client Agent for Windows is installed, you can create and edit ACLs from the Client Agent Admin GUI.

For more information about ACLs, see the CA ARCserve Backup *Client Agent for Windows Help*.

If the CA ARCserve Backup Client Agent for Windows is not installed, you can create ACLs manually by adding new registry values under:

HKEY\_LOCAL\_MACHINE\Software\ComputerAssociates\CA ARCserve Backup\UniversalClientAgent\ACL

After you have navigated to the proper registry key, change the following registry values as described:

### **ServerList (REG\_MULTI\_SZ)**

Add CA ARCserve Backup server names. You can add one server name per line.

### **type (REG\_DWORD)**

Select one of the following options:

#### **Option 0**

All CA ARCserve Backup servers are permitted to back up the database (default).

#### **Option 1**

Only CA ARCserve Backup servers on the list are permitted to back up the database.

#### **Option 2**

Only CA ARCserve Backup servers NOT on the list are permitted to back up the database.

## Restore

The agent can restore a database or transaction log online. You do not need to shut down the server during the restore operation.

**Note:** Only the database the agent is restoring is inaccessible during a restore operation. Also, when you try to restore a Sybase database session (in single user mode), the job fails. You must check the agent log to see if the restore was successful or not.

If you are completely reconstructing an entire server, you must confirm that the same database or log and the corresponding physical devices are defined in the server master database. If they are damaged and cannot be recovered, you must drop the database and the related devices before proceeding with the restore. The agent checks the validity of each restore before it begins the operation.

**Important!** It is assumed that you have sufficient knowledge about the database you are restoring, such as the size, logical names and physical names of devices.

**Note:** Restoring a database incurs significantly more overhead on a server than a backup, therefore it is considerably slower than a backup. Unless an error message is displayed or reported, do not stop the restore.

In general, restoring a transaction log is much faster than restoring a database. Therefore, you may not need to restore a database as often as a transaction log.

For more information on transaction logs, see Transaction Log Backups in this chapter.

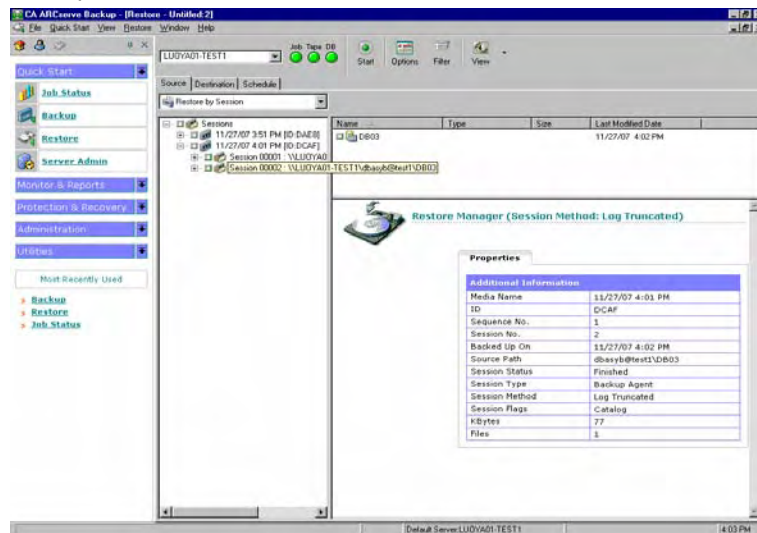
## Restore a Sybase Database

### To restore a database or transaction log

1. In CA ARCserve Backup, open the Restore Manager and select the database sessions you want to restore using one of the following restore methods:
  - **Restore by Tree** - Displays a tree of the networks and machines backed up by CA ARCserve Backup.

The databases shown in this view are the most recent backup sessions. Browse the list to select the database you want to restore. After you have selected the database, you can then select an older version of the database to restore by clicking Version History.

- **Restore by Session** - Displays a list of media you have used when backing up with CA ARCserve Backup, as shown in the following example:



Choose the media containing the backup you want, browse the session containing that backup, and select the specific database or log you want to restore.

2. Click the Destination tab. On the Destination tab, select one of the following:
  - The **Restore files to their original locations** option
  - Another Sybase instance to which you want the database restored

**Note:** If the backup session was created in a previous version of Sybase Adaptive Server, the Restore files to their original locations option will not work because no instance name was specified for the backup. For files created in a previous version of Sybase Adaptive Server, you must select a specific Sybase instance as a restore destination.

3. Click the Start tool bar button on the Restore Manager.  
The Session User Name and Password dialog appears.
4. To enter or change the user name and password for the machine to which you are restoring, select a session on the Machine tab and click Edit.  
The Enter User Name and Password dialog appears.
5. Enter or change the user name and password. Click OK when you are finished.
6. To enter or change the user name and password for the database to which you are restoring, click the DBAgent tab.

7. Select a session on the DBAgent tab and click Edit.

The Enter User Name and Password dialog appears.

8. In the Enter User Name and Password dialog, enter or change the user name and password. Click OK when you are finished.
9. To submit the job, click OK on the Session User Name and Password dialog.

When the job finishes, a message reporting a successful restore operation appears.

**Note:** When restoring, remember the order in which you backed up the database and the log. For example, if you backed up the database first and then backed up the related logs, you should restore them in the same order.

10. After the agent has restored all the sessions successfully, Sybase Adaptive Server takes the restored database offline. To bring the database online and make it accessible, run the Sybase isql utility. To start the isql utility, enter the following command at a command line console:

```
Sybase_main_dir\OCSxxx\bin\isql.exe -Ssybase_instance_name -Usa -Ppassword_for_sa
```

11. After you have started the isql utility, enter the following commands to bring the database online:

```
online database DATABASE_NAME  
go
```

For more information on using CA ARCserve Backup to restore files, see the *Administration Guide*.

## How Sybase Adaptive Server Security Works

When you browse a server, CA ARCserve Backup begins by opening communication with the agent. The Security dialog appears, prompting you for security information, as shown in the following example:



To ensure access to the files you want, log in as a system administrator or with a user name and password that has system administrator privileges.

**Note:** If the user name and password you enter do not have system administrator privileges, the server may not let you browse, back up or restore databases, or transaction logs.

## Recover the Master Database

### To recover the master database

**Note:** You must run the Sybase Adaptive Server in the single-user mode.

1. Verify that CA ARCserve Backup, Sybase Adaptive Server, and the agent are installed on the appropriate systems.
2. Append a `-m` parameter to the command line in the `RUN_servername.BAT` file.

**Note:** This file can be found in the `sybase_main_dir\install` directory.

3. Run the file. Sybase Adaptive Server is now in single-user mode.
4. Restore the master database from a storage device using CA ARCserve Backup and the agent.
5. Shut down the server and restart it in normal (multi-user) mode.

After Sybase confirms that the master database is in good condition, the master database has been recovered.

For more information on restoring a master database, see the *Sybase Adaptive Server System Administrator Guide* and *Sybase Adaptive Server Reference Manual*.

## How the Agent Restores Dropped Databases

A dropped database is a database that has been removed from the Sybase database and is no longer accessible. The agent can restore a dropped database, even if the database has not been recreated. To do this, the agent recreates the devices needed to restore the database by using information from the database backup session:

- First, the agent creates one or two devices large enough to hold all the backed up data. The agent creates these devices in the path set in the `RestoreDir` registry key.

**Note:** The agent creates two devices if the dropped database had a separate log.

- If the key is Null, the agent creates the devices in the Sybase Adaptive Server home directory. The devices are named `DbadvX.Dat` or `DbadvX.Log`, where X is an increasing number.

- The agent recreates the database on these devices with the data definitions from the session being restored.

**Note:** If the restore job fails, you must delete the `DbadvX.Dat` and `DbadvX.Log` devices using SQL commands in the Sybase `isql` utility.



## Disaster Recovery

This section describes disaster recovery procedures for Sybase Adaptive Server databases and servers.

### Recover Sybase Adaptive Server Databases

#### To recover your Sybase Adaptive Server database

1. Reinstall your environment so it is the same as it was before the disaster.
2. Install your operating system.
3. Install CA ARCserve Backup.
4. Install Sybase Adaptive Server.
5. Install the agent.

**Note:** You should use the same server names and directory paths as before the disaster.

6. Restore the master database.

For more information, see Recover a Master Database in this chapter.

7. Restore the remaining databases normally, using CA ARCserve Backup and the agent.

### Ensure Databases Consistency

#### To ensure database consistency

1. Verify that CA ARCserve Backup, Sybase Adaptive Server, and the agent are installed on the appropriate systems.
2. Start Sybase Adaptive Server in single-user mode. To do so, append -m to the end of the command line in the following file:

```
Sybase_main_directory\install\run_servename.bat
```

Run the file. Keep the batch file command window open.

3. Start the Sybase Server by running the following file:

```
Sybase_main_directory\install\run_servename.bat
```

4. Restore the master database.

For more information, see Recovering a Master Database in this chapter.

5. After the master database restore is complete, shut down the server and restart it in normal (multi-user) mode.
6. Restore the rest of the databases.



# Appendix A: Troubleshooting

---

The Agent for Sybase has several troubleshooting mechanisms that you can configure under the registry key:

```
HKEY_LOCAL_MACHINE\Software\ComputerAssociates\CA  
ARCserveBackup\DSAgent\CurrentVersion\agent\dbasyb@SYBASE_INSTANCE_NAME
```

The registry entries under this key that you can change include:

## **Max\_pipe\_wait\_time**

The agent uses named pipes to send its data to and from CA ARCserve Backup. Under a heavy system load, the named pipe can time out before data becomes available. To alleviate this problem, you can increase the Max\_pipe\_wait\_time in the registry value.

## **Debug**

If you set the debug flag in the registry to one (1), the agent generates an execution trace. This trace is designed to assist in tracking down problems with the agent.

**Note:** The debug flag is designed for use by CA Technical Support. Do not set this flag unless requested to do so by CA Technical Support.

This section contains the following topics:

[Log Files](#) (see page 27)

[Error Messages](#) (see page 27)

## Log Files

The agent produces several log files you can use when troubleshooting. One of the log files is the dbasyb.log. This file is located in the main agent directory and provides general information on the progress of backup and restore operations. You can find error codes and messages from the agent and Sybase Adaptive Server in this file.

You can also view the activity log in the Activity log window.

## Error Messages

This section contains a list of error messages produced by the agent with a brief description of each error and a possible solution.

### Agent Function entry point not supported

**Reason:**

The client was unable to access agent functions.

**Action:**

Ensure that the proper version of the agent is installed.

### Exceeded allocated buffer

**Reason:**

The allocated buffer is full.

**Action:**

Back up or restore fewer objects in one session.

### Received unsupported command

**Reason:**

The agent tried to process an unsupported object.

**Action:**

For assistance, contact Technical Support at <http://ca.com/support>.

### Sybase query failed

**Reason:**

The agent could not query Sybase Adaptive Server and the Server allows client connections to query.

**Action:**

Confirm that Sybase Adaptive Server is running.

### Failed to initialize Sybase Client-Library

**Reason:**

The agent could not initialize its connection path.

**Action:**

For assistance, contact Customer Support at <http://ca.com/support>.

### Cannot parse database path

**Reason:**

A client sent the wrong database path to the agent.

**Action:**

For assistance, contact Customer Support at <http://ca.com/support>.

### Cannot create database or log, please manually create one

**Reason:**

The agent was unable to create a database to restore.

**Action:**

For assistance, contact Technical Support at <http://ca.com/support>.

### Database or transaction log name not found

**Reason:**

The selected database or transaction log could not be found.

**Action:**

Confirm the existence of the selected database and check for corruption. Run DBCC CHECKDB(DATABASE\_NAME) from the Sybase isql utility and check the output to see if it reports any errors.

### Tried to load a non-Sybase file

**Reason:**

The backup session contains invalid Sybase data.

**Action:**

Restore from the correct session or from another backup if possible.

### Failed to create database

**Reason:**

The agent was unable to create a database.

**Action:**

Make sure sufficient disk space exists for database creation.

### Exceeding maximum number of stripe number

**Reason:**

The backup or restore operation attempted to use more stripes than is supported.

**Action:**

Reduce the value of :

HKEY\_LOCAL\_MACHINE\Software\CA\ARCserve Backup\DSAgent\Current  
Version\agent\dbasyb\$Sybase\_Instance\_name\StripeNum (REG\_DWORD).

### Error status in named pipe

**Reason:**

Named pipe operations encountered an unexpected error.

**Action:**

If you were running a remote backup or restore operation, check the network connections. Also, verify that you have provided the correct host and Sybase user names and passwords. For assistance, contact Technical Support at <http://ca.com/support>.

### Read/Write error in named pipes

**Reason:**

Named pipe operations encountered a read or write error.

**Action:**

If you were running a remote backup or restore operation, check the network connections. Also, verify that you have provided the correct host and Sybase user names and passwords. For assistance, contact Technical Support at <http://ca.com/support>.

### Command not supported

**Reason:**

The client issued an unsupported command to the agent.

**Action:**

If no backup or restore error occurs and the backup or restore was successful, you can ignore this error message. If the backup or restore fails, verify the version numbers of CA ARCserve Backup and the agent and confirm their compatibility.

For assistance, contact Technical Support at <http://ca.com/support>.

### Cannot get information from the registry

**Reason:**

The agent was unable to retrieve information from the registry.

**Action:**

Verify that the proper version of the agent is installed.

### No io\_unit structure is available

**Reason:**

The agent ran out of input or output handles.

**Action:**

Wait for current agent operations to complete.

### The database cannot be used at the moment

**Reason:**

A necessary database is currently inaccessible.

**Action:**

Try the following actions:

- Wait for the current activity to finish, then try again.
- Verify that the Sybase online database command has succeeded.
- Check the Sybase Server messages logged into the Sybase Backup Agent log for errors or problems.

For assistance, contact Technical Support at <http://ca.com/support>.

### No dumpload structure is available

**Reason:**

The agent ran out of Dump or Load handles.

**Action:**

Wait for current agent operations to complete.

**Failed to send SQL command. Please check the log file DBASYB.LOG**

**Reason:**

The agent was unable to send an SQL command to Sybase.

**Action:**

Check the specified log file for further information.

**Failed to bind the result rows from Sybase SQL query. Please check the log file DBASYB.LOG**

**Reason:**

The agent was unable to connect to its query results.

**Action:**

Check the specified log file for further information.

**Sybase Adaptive Server Error. Please check the log file DBASYB.LOG**

**Reason:**

The agent received an error from Sybase.

**Action:**

Check the specified log file for more information.

**Cannot restore with different stripe number from in backup**

**Reason:**

The session stripe number and the agent stripe number do not match.

**Action:**

For assistance, contact Technical Support at <http://ca.com/support>.

**Invalid user ID or password was submitted**

**Reason:**

The agent issued an invalid user name or password.

**Action:**

Verify user login information.



### Sybase Adaptive Server or Backup server is not running

**Reason:**

Necessary Sybase services are not running.

**Action:**

Start all required Sybase services.

### Cannot open a service

**Reason:**

The agent could not open a required service.

**Action:**

Ensure that all necessary services are running.

### Cannot query a Sybase Adaptive Server Service

**Reason:**

The agent could not receive information from Sybase Adaptive Server services.

**Action:**

Ensure that all necessary Sybase services are running.

### Cannot get a service handle

**Reason:**

The agent was unable to connect to a required service.

**Action:**

For assistance, contact Technical Support at <http://ca.com/support>.



# Index

---

## A

access client list • 19  
ACL • 19  
Activity log • 18  
administrator privileges • 11

## B

backup  
    Activity log • 18  
    agent activity log • 15  
    database and transaction logs • 15  
    procedure • 17  
    transaction logs • 16  
    transaction logs only • 16  
    verifying • 18  
    while database active • 15, 16  
    without agent • 15  
Backup Agent RPC Server service • 9  
backup options  
    back up entire database • 17  
    back up transaction logs • 17  
    no truncate • 17  
    truncate • 17

## C

CA ARCserve Backup  
    defined • 7  
CA ARCserve Backup Agent for Sybase  
    customizing in Win • 10  
    data flow during b • 8  
    functions • 7  
CA.log • 27  
contacting technical support • iv  
customer support, contacting • iv

## D

data flow during back up • 8  
Dbaconfig.exe • 12  
DBAgent tab • 20  
dbasyb.log • 15, 27  
Destination tab • 20  
disaster recovery • 25  
dropped database, restoring • 24

## I

installing the agent  
    password • 12  
    prerequisites • 11  
    requirements • 12  
    user ID • 12  
integrated login • 12

## L

log files  
    CA.log • 27  
    dbasyb.log • 27

## M

Machine tab • 20  
master database, recovering • 24  
messages • 27

## N

no truncate backup option • 17

## P

parameters, modifiable in Windows Registry • 10  
passwords for remote Windows database backups • 9  
prerequisites for installation • 11

## R

restore  
    DBAgent tab • 20  
    Destination tab • 20  
    dropped database • 24  
    file order • 20  
    Machine tab • 20  
    password • 20  
    procedure • 20  
    Restore Manager • 20  
    restoring by session • 20  
    restoring by tree • 20  
    user name • 20  
Restore Manager • 20  
restoring by session • 20  
restoring by tree • 20

---

RUN\_servername file • 24

## S

support, contacting • iv

Sybase Adaptive Server

security • 23

Security dialog • 23

## T

technical support, contacting • iv

transaction log

backing up • 16

definition • 16

truncating • 16

troubleshooting • 27

truncate backup option • 17

truncate, transaction log after backup • 16

## W

Windows Registry • 10