

CA SiteMinder®

Web Agent Installation Guide for Domino

12.52 SP1



This Documentation, which includes embedded help systems and electronically distributed materials, (hereinafter referred to as the "Documentation") is for your informational purposes only and is subject to change or withdrawal by CA at any time. This Documentation is proprietary information of CA and may not be copied, transferred, reproduced, disclosed, modified or duplicated, in whole or in part, without the prior written consent of CA.

If you are a licensed user of the software product(s) addressed in the Documentation, you may print or otherwise make available a reasonable number of copies of the Documentation for internal use by you and your employees in connection with that software, provided that all CA copyright notices and legends are affixed to each reproduced copy.

The right to print or otherwise make available copies of the Documentation is limited to the period during which the applicable license for such software remains in full force and effect. Should the license terminate for any reason, it is your responsibility to certify in writing to CA that all copies and partial copies of the Documentation have been returned to CA or destroyed.

TO THE EXTENT PERMITTED BY APPLICABLE LAW, CA PROVIDES THIS DOCUMENTATION "AS IS" WITHOUT WARRANTY OF ANY KIND, INCLUDING WITHOUT LIMITATION, ANY IMPLIED WARRANTIES OF MERCHANTABILITY, FITNESS FOR A PARTICULAR PURPOSE, OR NONINFRINGEMENT. IN NO EVENT WILL CA BE LIABLE TO YOU OR ANY THIRD PARTY FOR ANY LOSS OR DAMAGE, DIRECT OR INDIRECT, FROM THE USE OF THIS DOCUMENTATION, INCLUDING WITHOUT LIMITATION, LOST PROFITS, LOST INVESTMENT, BUSINESS INTERRUPTION, GOODWILL, OR LOST DATA, EVEN IF CA IS EXPRESSLY ADVISED IN ADVANCE OF THE POSSIBILITY OF SUCH LOSS OR DAMAGE.

The use of any software product referenced in the Documentation is governed by the applicable license agreement and such license agreement is not modified in any way by the terms of this notice.

The manufacturer of this Documentation is CA.

Provided with "Restricted Rights." Use, duplication or disclosure by the United States Government is subject to the restrictions set forth in FAR Sections 12.212, 52.227-14, and 52.227-19(c)(1) - (2) and DFARS Section 252.227-7014(b)(3), as applicable, or their successors.

Copyright © 2014 CA. All rights reserved. All trademarks, trade names, service marks, and logos referenced herein belong to their respective companies.

CA Technologies Product References

This document references the following CA Technologies products:

- CA SiteMinder®
- CA IdentityMinder™ (formerly CA Identity Manager)
- CA SiteMinder® Web Services Security (formerly CA SOA Security Manager)

Contact CA Technologies

Contact CA Support

For your convenience, CA Technologies provides one site where you can access the information that you need for your Home Office, Small Business, and Enterprise CA Technologies products. At <http://ca.com/support>, you can access the following resources:

- Online and telephone contact information for technical assistance and customer services
- Information about user communities and forums
- Product and documentation downloads
- CA Support policies and guidelines
- Other helpful resources appropriate for your product

Providing Feedback About Product Documentation

If you have comments or questions about CA Technologies product documentation, you can send a message to techpubs@ca.com.

To provide feedback about CA Technologies product documentation, complete our short customer survey which is available on the CA Support website at <http://ca.com/docs>.

Documentation Changes

No updates have been made to the 12.52 SP1 documentation, as a result of issues found in previous releases.

The following updates have been made to the 12.52 documentation, as a result of issues found in previous releases.

- [Uninstall a Web Agent](#) (see page 55)—Removed obsolete material related to installing a supported JRE and including it in the system path. A JRE is now included with the software.

Contents

Chapter 1: Preparation	7
Only Domino Server Procedures in this Guide	7
Hardware Requirements for CA SiteMinder® Agents	8
Preparation Roadmap for Domino Servers	9
How to Prepare for a Web Agent Installation on Domino	10
Locate the Platform Support Matrix	10
Domino Server Preparations for UNIX Operating Environments	11
Domino Server Preparations for Linux Operating Environments.....	11
Policy Server Requirements	14
Chapter 2: Install and Configure an Agent for Domino on Windows	17
Agent Installation Compared to Agent Configuration.....	17
How to Install and Configure an Agent for Domino on Windows	18
Gather the Information for the Installation Program	18
Run the Installation Program on Windows	18
Gather the Information that the Configuration Program Requires on Windows	19
Add the Domino Web Agent DLL (Windows).....	22
Run the Web Agent Configuration Program on Windows	23
Run the Unattended or Silent Installation and Configuration Programs for Subsequent Agents on Windows	24
Chapter 3: Install and Configure an Agent for Domino on UNIX/Linux	27
Agent Installation Compared to Agent Configuration.....	27
How to Install and Configure an Agent for Domino on UNIX/Linux.....	28
Gather the Information for the Installation	28
Run the Installation Program on UNIX/Linux.....	29
Gather the Information that the Configuration Program Requires for UNIX or Linux.....	29
Add the Domino Web Agent Library File (UNIX)	33
Source the Agent Environment Script on UNIX or Linux	34
Set the Library Path Variable on UNIX or Linux.....	34
Run the Web Agent Configuration Program on UNIX/Linux	35
Run the Unattended or Silent Installation and Configuration Programs for Agents on UNIX/Linux	36
Chapter 4: Dynamic Policy Server Clusters	39
Connect a Web Agent to a Dynamic Policy Server Cluster	40

Chapter 5: Starting and Stopping Web Agents	41
Enable a Web Agent.....	41
Disable a Web Agent	42
Chapter 6: Upgrade a Web Agent to 12.52 SP1	43
Agent for Domino Upgrade Roadmap.....	44
How to Upgrade an Agent for Domino.....	45
Upgrade Process from CA SiteMinder® r6.x.....	46
Upgrade Process from CA SiteMinder® r12.0	47
Run the Installation Wizard to Upgrade your Agent on Windows	47
Run the Installation Wizard to Upgrade your Agent on UNIX/Linux.....	48
Add the Web Agent Domino DLL file to your upgraded Agent on Windows	49
Add the Web Agent Domino Library file to your upgraded Agent on UNIX/Linux.....	50
Source the Agent Environment Script After an Upgrade on UNIX/Linux	51
Set the Library Path Variable Before Configuring your Upgraded Agent on UNIX/Linux.....	51
Configure your Upgraded Agent on Windows	53
Configure your Upgraded Agent on UNIX/Linux.....	54
Chapter 7: Uninstall a Web Agent	55
Notes About Uninstalling Web Agents.....	55
Uninstall a Web Agent from a Windows Operating Environment	56
Uninstall a Domino Agent from UNIX.....	58
Chapter 8: Troubleshooting	61
Domino Web Agent Not Enabled but the Web Server has Started.....	61
Domino Agent Cannot Initialize When Local Configuration Mode is Used	61
Non-english Input Characters Contain Junk Characters.....	62
Appendix A: Worksheets	63
Agent Installation Worksheet	63
Web Agent Configuration Worksheet for Domino.....	63
Index	65

Chapter 1: Preparation

This section contains the following topics:

[Only Domino Server Procedures in this Guide](#) (see page 7)

[Hardware Requirements for CA SiteMinder® Agents](#) (see page 8)

[Preparation Roadmap for Domino Servers](#) (see page 9)

[How to Prepare for a Web Agent Installation on Domino](#) (see page 10)

Only Domino Server Procedures in this Guide

This guide only contains procedures for installing or configuring CA SiteMinder® agents on Domino servers.

To install or configure a CA SiteMinder® agent on any other type of web server or operating environment, see one of the following guides:

- *Web Agent Installation Guide for Apache-based servers.*
- *Web Agent Installation Guide for IIS.*
- *Web Agent Installation Guide for Oracle iPlanet.*

Hardware Requirements for CA SiteMinder® Agents

Computers hosting CA SiteMinder® agents require the following hardware:

Windows operating environment requirements

agents operating on Windows operating environments require the following hardware:

- CPU: x86 or x64
- Memory: 2-GB system RAM.
- Available disk space:
 - 2-GB free disk space in the installation location.
 - .5-GB free disk space in the temporary location.

UNIX operating environment requirements

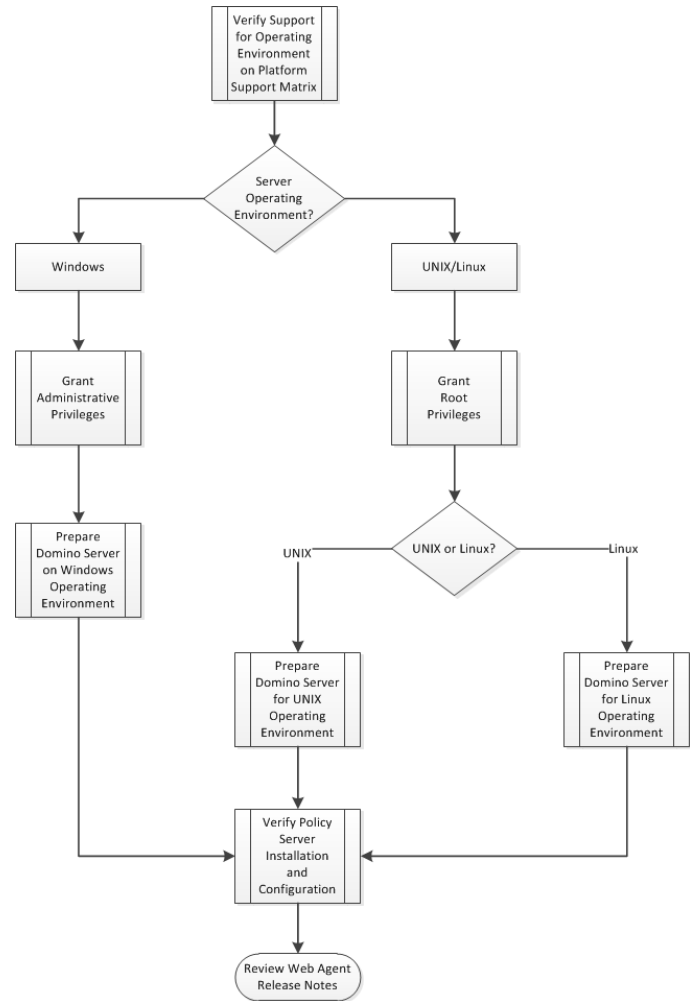
Agents operating on UNIX operating environments require the following hardware:

- CPU:
 - Solaris operating environment: SPARC
 - Red Hat operating environment: x86 or x64
- Memory: 2-GB system RAM.
- Available disk space:
 - 2-GB free disk space in the installation location.
 - .5-GB free disk space in /temp.

Note: Daily operation of the agent requires 10 MB of free disk space in /tmp. The agent creates files and named pipes under /tmp. The path to which these files and pipes are created cannot be changed.

Preparation Roadmap for Domino Servers

The following illustration describes how to prepare your web server before you install a CA SiteMinder® agent:



How to Prepare for a Web Agent Installation on Domino

To prepare for a CA SiteMinder® agent installation on a Domino server, use the following process:

1. Locate the Platform Support Matrix. Verify that your web server supports the version of the CA SiteMinder® agent that you want to install.
2. Verify that you have an account with one of the following types of privileges for your web server:
 - Administrative privileges (for the Windows operating environment)
 - Root privileges (for the UNIX or Linux operating environments)
3. Configure the appropriate agent requirements by using one of the following lists:
 - Domino server preparations for UNIX operating environments.
 - Domino server preparations for Linux operating environments.
4. Verify that the Policy Server is installed and configured.
5. Review the known issues section of the Web Agent Release Notes.

Locate the Platform Support Matrix

Use the Platform Support Matrix to verify that the operating environment and other required third-party components are supported.

Follow these steps:

1. Go to the CA Support site.
2. Click Product Pages.
3. Enter the product name and click Enter.
4. Open popular links and click Informational Documentation Index.
5. Click Platform Support Matrices.

Note: You can download the latest JDK and JRE versions at the [Oracle Developer Network](#).

Technology Partners and CA Validated Products

The latest [list](#) of partners and their validated products.

Domino Server Preparations for UNIX Operating Environments

Domino servers running on UNIX operating environments require the following preparations before installing a CA SiteMinder® agent:

1. [Set the display variable](#) (see page 11).
2. Verify that the appropriate [Solaris patches](#) (see page 11) have been installed for your operating environment.

Set the DISPLAY For CA SiteMinder® Agent Installations on UNIX

If you are installing the CA SiteMinder® Agent on a UNIX system from a remote terminal, such as a Telnet or Exceed terminal, be sure the DISPLAY variable is set for the local system. For example, if your machine is 111.11.1.12, set the variable as follows:

```
DISPLAY=111.11.1.12:0.0
export DISPLAY
```

Note: You can also install the agent using the console mode installation, which does not require the X window display mode.

Required Solaris Patches

Before installing a CA SiteMinder® Agent on a Solaris computer, install the following patches:

Solaris 9

Requires patch 111711-16.

Solaris 10

Requires patch 119963-08.

You can verify installed patch versions by logging in as the root user and executing the following command:

```
showrev -p | grep patch_id
```

To locate Solaris patches, go to the Oracle Solution Center.

Domino Server Preparations for Linux Operating Environments

Domino servers running on Linux operating environments require the following preparations before installing a CA SiteMinder® agent:

1. [Verify that the required patches are installed](#) (see page 12).
2. Verify that the required libraries are installed.

Required Linux Patches

The following Linux patches are required:

For Web Agents running on 64-bit Linux systems

- Binutils 2.17
- GCC 4.1.0

Required Linux Libraries

Certain library files are required for components operating on Linux operating environments. Failure to install the correct libraries can cause the following error:

```
java.lang.UnsatisfiedLinkError
```

If you are installing, configuring, or upgrading a Linux version of this component, the following packages are required on the host system:

Red Hat 5.x:

- `compat-gcc-34-c++-3.4.6-patch_version.i386`
- `libstdc++-4.x.x-x.el5.i686.rpm`
- `libidn.so.11.rpm`
- `ncurses`

Red Hat 6.x:

- libstdc++-4.x.x-x.el6.i686.rpm
- libidn-1.18-2.el6.i686
- libXext.i686.rpm
- libXrender.i686.rpm
- linXtst.i686.rpm
- libidn.so.11.rpm
- ncurses

Additionally, for Red Hat 6.x (64-bit):

All the RPM packages that are required for 64-bit Red Hat 6.x are *32-bit* packages.

- libXau-1.0.5-1.el6.i686.rpm
- libxcb-1.5-1.el6.i686.rpm
- compat-db42-4.2.52-15.el6.i686.rpm
- compat-db43-4.3.29-15.el6.i686.rpm
- libX11-1.3-2.el6.i686.rpm
- libXrender-0.9.5-1.el6.i686.rpm
- libexpat.so.1 (provided by expat-2.0.1-11.el6_2.i686.rpm)
- libfreetype.so.6 (provided by freetype-2.3.11-6.el6_2.9.i686.rpm)
- libfontconfig.so.1 (provided by fontconfig-2.8.0-3.el6.i686.rpm)
- libICE-1.0.6-1.el6.i686.rpm
- libuuid-2.17.2-12.7.el6.i686.rpm
- libSM-1.1.0-7.1.el6.i686.rpm
- libXext-1.1-3.el6.i686.rpm
- compat-libstdc++-33-3.2.3-69.el6.i686.rpm
- compat-db-4.6.21-15.el6.i686.rpm
- libXi-1.3-3.el6.i686.rpm
- libXtst-1.0.99.2-3.el6.i686.rpm
- libXft-2.1.13-4.1.el6.i686.rpm
- libXt-1.0.7-1.el6.i686.rpm
- libXp-1.0.0-15.1.el6.i686.rpm
- libstdc++.i686.rpm
- compat-libtermcap.rpm

- libidn.i686.rpm
- ncurses

Policy Server Requirements

Verify that your Policy Server meets the following requirements:

- Installed and configured.
- Able to communicate with the computer on which you plan to install the agent.

Note: For more information, see the Policy Server documentation.

To install and configure a CA SiteMinder® agent, a Policy Server requires at least the following items:

- A CA SiteMinder® administrator that has the right to register trusted hosts.
A trusted host is a client computer where one or more CA SiteMinder® Agents are installed and registered with the Policy Server. The CA SiteMinder® administrator must have permissions to register trusted hosts with the Policy Server. Registering a trusted host creates a unique trusted host name object on the Policy Server.
- Agent identity
An Agent identity establishes a mapping between the Policy Server and the name or IP address of the web server instance hosting an Agent. You define an Agent identity from the Agents object in the Administrative UI. You assign it a name and specify the Agent type as a Web Agent.
- Host Configuration Object (HCO)
The host configuration object on the Policy Server defines the communication between the agent and the Policy Server after an initial connection. Initial connections use the parameters in the SmHost.conf file.

- Agent Configuration Object (ACO)

This object includes the parameters that define the agent configuration. All CA SiteMinder® agents require at least one of the following configuration parameters defined in the ACO:

AgentName

Defines the identity of the web agent. This identity links the name and the IP address or FQDN of each web server instance hosting an Agent.

The value of the DefaultAgentName is used instead of the AgentName parameter if any of the following events occur:

- The AgentName parameter is disabled.
- The value of AgentName parameter is empty.
- The values of the AgentName parameter do *not* match any existing agent object.

Note: This parameter can have more than one value. Use the multivalue option when setting this parameter in an Agent Configuration Object. For local configuration files, add each value to a separate line in the file.

Default: No default

Limit: Multiple values are allowed, but each AgentName parameter has a 4,000 character limit. Create additional AgentName parameters as needed by adding a character to the parameter name. For example, AgentName, AgentName1, AgentName2.

Limits: Must contain 7-bit ASCII characters in the range of 32-127, and include one or more printable characters. Cannot contain the ampersand (&) and asterisk (*) characters. The value is not case-sensitive. For example, the names MyAgent and myagent are treated the same.

Example: myagent1,192.168.0.0 (IPV4)

Example: myagent2, 2001:DB8::/32 (IPV6)

Example: myagent,www.example.com

Example (multiple AgentName parameters): AgentName1, AgentName2, AgentName3. The value of each AgentName $number$ parameter is limited to 4,000 characters.

DefaultAgentName

Defines a name that the agent uses to process requests. The value for DefaultAgentName is used for requests on an IP address or interface when no agent name value exists in the AgentName parameter.

If you are using virtual servers, you can set up your CA SiteMinder® environment quickly by using a DefaultAgentName. Using DefaultAgentName means that you do not need to define a separate agent for each virtual server.

Important! If you do not specify a value for the DefaultAgentName parameter, then the value of the AgentName parameter requires every agent identity in its list. Otherwise, the Policy Server cannot tie policies to the agent.

Default: No default.

Limit: Use only one value. Multiple values are prohibited.

Limits: Must contain 7-bit ASCII characters in the range of 32-127, and include one or more printable characters. Cannot contain the ampersand (&) and asterisk (*) characters. The value is not case-sensitive. For example, the names MyAgent and myagent are treated the same.

CA SiteMinder® Agents for Domino also require values for the following parameters:

DominoDefaultUser

Specifies the name by which the Domino Web Agent identifies the users that CA SiteMinder® has previously authenticated against another directory to the Domino server.

Important! This parameter must be encrypted if it is stored in a local configuration file. Use the encryptkey tool to encrypt this parameter. Do not change it by editing the local configuration file directly.

Default: No default

DominoSuperUser

Identifies a user who has access to all resources on the Domino server. Helps ensure that all users successfully logged in to CA SiteMinder® are also logged in to the Domino server as the Domino SuperUser.

This value can be encrypted.

This parameter affects the following parameters:

- SkipDominoAuth

Default: No default

Chapter 2: Install and Configure an Agent for Domino on Windows

This section contains the following topics:

[Agent Installation Compared to Agent Configuration](#) (see page 17)

[How to Install and Configure an Agent for Domino on Windows](#) (see page 18)

Agent Installation Compared to Agent Configuration

The concepts of installation and configuration have specific meanings when used to describe CA SiteMinder® agents.

Installation means installing the CA SiteMinder® agent software on a computer system. For example, installing an agent creates directories and copies the CA SiteMinder® agent software and other settings to the computer.

Configuration occurs after installation and means the act of preparing the CA SiteMinder® agent software for a specific web server on a computer. This preparation includes registering the agent with CA SiteMinder® Policy Servers, and creating a runtime server instance for the web server that is installed on the computer.

Use the wizard-based installation and configuration programs to install and configure your agent on your first web server. The wizard-based programs create a .properties file.

Use the .properties file and the respective executable file to install or configure the agent silently on additional web servers.

How to Install and Configure an Agent for Domino on Windows

Installing and configuring the CA SiteMinder® Agent for Domino involves several separate procedures. To install and configure the Agent for Domino, use the following process:

1. [Gather the information for the installation program](#) (see page 18).
2. [Run the wizard based installation program](#) (see page 18).
3. [Gather the information that the configuration that the program requires](#) (see page 19).
4. [Add the Domino Agent DLL file](#) (see page 22).
5. [Run the configuration program](#) (see page 23).
6. (Optional) [Install and configure the Agent for Domino on additional Domino servers silently](#) (see page 24).
7. (Optional) Perform any of the following procedures:
 - Configure the [CGI Directory and CGI URL path settings](#) (see page 25).
 - Configure [alias settings to enable HTML forms authentication](#) (see page 25).

Gather the Information for the Installation Program

Gather the following information about your web server before running the installation program for the agent:

Installation Directory

Specifies the location of the agent binary files on your web server. The `web_agent_home` variable is set to this location.

Limit: The product requires the name "webagent" for the bottom directory in the path

Run the Installation Program on Windows

The installation program for the agent installs the agent on one computer at a time using the Windows operating environment. This installation program can be run in wizard or console modes. The wizard and console-based installation programs also create a .properties file for subsequent installations and configurations using the unattended or silent method with the same settings.

For example, suppose the Agents in your environment use the same web server version, installation directory, Agent Configuration Object and Policy Servers. Use the installation wizard or console-based installation program for your first installation. Afterwards, you could create your own script to run the installation program with the .properties file the wizard or console-based installation program created.

Follow these steps:

1. Copy the Web Agent installation executable file to a temporary directory on your web server.
2. Do *one* of the following steps:
 - For wizard-based installations, right-click the installation executable file, and then select Run as Administrator.
 - For console-based installations, open a command line window and run the executable as shown in the following example:

```
executable_file_name.exe -i console
```
3. Use the information that you gathered previously to complete the installation.

Gather the Information that the Configuration Program Requires on Windows

Gather the following information before running the configuration program for the agent on your Domino server:

Register Host

Indicates whether you want to register a trusted host. This registration creates a trusted host object in the Policy Server and an SmHost.conf file on the web server. The agent uses this information to make an initial connection to Policy Servers when it starts. Register each agent instance as a trusted host only once.

Default:Yes

Limits: Yes, No

Admin User Name

Specifies the name of a CA SiteMinder® user with Administrative privileges that is already defined in the Policy Server. This user account requires privileges to register trusted hosts.

Admin Password

Specifies a password for the Admin User Name that is already defined in the Policy Server.

Confirm Admin Password

Repeats the password entered in the Admin Password field. This value verifies the password for the Admin User Name already defined in the Policy Server.

Trusted Host Object Name

Specifies a unique name for the trusted host you are registering. This trusted host object is stored on the Policy Server.

Host Configuration Object

Specifies the name of a Host Configuration Object that is already defined in the CA SiteMinder® Policy Server. After the agent initially connects to a Policy Server (using the SmHost.conf file settings), subsequent connections use the settings from the Host Configuration Object.

Policy Server IP Address

Specifies the Internet Protocol address of the Policy Servers to which the agent attempts to connect upon startup. If your Policy Server is behind a firewall, specify a port number also.

If a hardware load balancer is configured to expose Policy Servers in your environment through a single Virtual IP Address (VIP), enter the VIP.

Example: (IPv4) 192.168.1.105

Example: (IPv4 with the port number) 192.168.1.105:44443

Example: (IPv6) 2001:DB8::/32

Example: (IPv6) [2001:DB8::/32]:44443

FIPS Mode Setting

Specifies *one* of the following algorithms:

FIPS Compatibility/AES Compatibility

Uses algorithms existing in previous versions of CA SiteMinder® to encrypt sensitive data and is compatible with previous versions of CA SiteMinder®. If your organization does *not* require the use of FIPS-compliant algorithms, use this option.

FIPS Migration/AES Migration

Allows a transition from FIPS-compatibility mode to FIPS-only mode. In FIPS-migration mode, the environment continues to use existing CA SiteMinder® encryption algorithms as you reencrypt existing sensitive data using FIPS-compliant algorithms.

FIPS Only/AES Only

Uses *only* FIPS-compliant algorithms to encrypt sensitive data in the CA SiteMinder® environment. This setting does *not* interoperate with, *nor* is backwards-compatible with, previous versions of CA SiteMinder®.

Default: FIPS Compatibility/AES Compatibility

Note: FIPS is a US government computer security standard that accredits cryptographic modules which meet the Advanced Encryption Standard (AES).

Important! Use a compatible FIPS/AES mode (or a combination of compatible modes) for both the CA SiteMinder® agent and the CA SiteMinder® Policy Server.

Name

Specifies the name of the SmHost.conf file which contains the settings the Web Agent uses to make initial connections to a Policy Server.

Default: SmHost.conf

Location

Specifies the directory where the SmHost.conf file is stored.

Default: *web_agent_home*\config

Enable Shared Secret Rollover

Select this check box to change the shared secret that the Policy Server uses to encrypt communications to the Web Agents.

iNotes File

Specifies the location of the iNotes file for a Web Agent running on a Domino web server.

Select Servers

Indicates the web server instances that the configuration program finds on the computer. Select the check boxes of the instances you want to configure. Clear the check boxes of those instances from which you want to remove CA SiteMinder® protection.

Agent Configuration Object Name

Specifies the name of an agent configuration object (ACO) already defined on the Policy Server.

Default: AgentObj

Advanced Authentication Scheme Dialog

Specifies the advanced authentication scheme for the web server instances you selected previously.

Add the Domino Web Agent DLL (Windows)

To make the Domino Web Agent operate properly, add the DOMINOWebAgent.dll file to the filter DLLs. The Web Agent DLL must be the first DLL in the list.

Follow these steps:

1. Open Lotus Notes.
2. Select File, Database, Open.
3. In the Server field, select the Domino Server where you installed the Web Agent.
4. In the Database scroll box, select the address book of the server.
Verify that names.nsf appears in the Filename field.
5. Click Open.
6. In the left pane, expand the Server folder and double-click the All Server Documents icon.
7. Select your server and click Edit Server.
8. Select the Internet Protocols tab.
9. In the DSAPI section of the window, find the DSAPI filter file names field and enter the full path to the Domino Web Agent DLL. Verify that the Domino Web Agent DLL appears first in the list. The default location of this DLL file is shown in the following example:
`web_agent_home\bin\DOMINOWebAgent.dll`
web_agent_home
Indicates the directory where the CA SiteMinder® agent is installed on your web server.
Default (Windows 32-bit installations only): C:\Program Files\CA\webagent
Default (Windows 64-bit installations only): C:\Program Files\CA\webagent\win64
Default (Windows 32-bit applications operating on 64-bit systems [Wow64]): C:\Program Files (x86)\webagent\win32
10. Click Save and Close.
11. Restart the web server. In some situations, a reboot could possibly be necessary.

Run the Web Agent Configuration Program on Windows

After gathering the information for your agent configuration, run the agent configuration program. This program creates an agent runtime instance for the web servers running on your computer.

This configuration program is wizard or console based, depending on the option you select. Running the configuration program in the wizard or console modes once creates a properties file. Use the properties file to run unattended configurations on other computers with same operating environment in the future.

Follow these steps:

1. Open the following directory on your web server:

`web_agent_home\install_config_info`

web_agent_home

Indicates the directory where the CA SiteMinder® agent is installed on your web server.

Default (Windows 32-bit installations only): C:\Program Files\CA\webagent

Default (Windows 64-bit installations only): C:\Program Files\CA\webagent\win64

Default (Windows 32-bit applications operating on 64-bit systems [Wow64]): C:\Program Files (x86)\webagent\win32

2. Use *one* of the following configuration methods:
 - For a GUI-based configuration, go to Step 3.
 - For a console-based configuration, go to Step 5.
3. Right-click the following executable, and then select Run as Administrator:
`ca-wa-config.exe`
4. Go to Step 8.
5. Open a Command Prompt window with Administrator privileges.
6. Navigate to the executable file listed previously, and then run it with the following switch:

`-i console`

7. Go to Step 8.
8. Follow the prompts shown in the configuration program. Provide the requested values from your agent configuration worksheet.

The agent runtime instance is created for your web servers.

Run the Unattended or Silent Installation and Configuration Programs for Subsequent Agents on Windows

The unattended or silent installation option can help you automate the installation and configuration process. This method saves time if you have a large CA SiteMinder® environment that uses many agents with identical settings.

For example, suppose the Agents in your environment use the same web server version, installation directory, Agent Configuration Object and Policy Servers. Use the installation wizard or console-based installation program for your first installation. Afterwards, you could create your own script to run the installation program with the .properties file the wizard or console-based installation program created.

Follow these steps:

1. Run the following wizards on your first web server (in the order shown):
 - a. The CA SiteMinder® Web Agent Installation wizard.
 - b. The CA SiteMinder® Web Agent Configuration wizard.
2. Locate the following file on your first web server:

`web_agent_home\install_config_info\ca-wa-installer.properties`

Note: If the path contains spaces, surround it with quotes.

web_agent_home

Indicates the directory where the CA SiteMinder® agent is installed on your web server.

Default (Windows 32-bit installations only): C:\Program Files\CA\webagent

Default (Windows 64-bit installations only): C:\Program Files\CA\webagent\win64

Default (Windows 32-bit applications operating on 64-bit systems [Wow64]): C:\Program Files (x86)\webagent\win32

3. Perform each of the following steps on the other web servers in your environment:

Note: To automate this process, create your own customized script to execute these files on your systems. Use any scripting language that you want.

- a. Create a temporary directory on the subsequent web server.
- b. Copy the following files from the first web server (Steps 1 and 2) to the temporary directory on your subsequent web server:
 - The CA SiteMinder® Web Agent Installation executable file.
 - CA SiteMinder® ca-wa-installer properties file.
- c. Open a Command Prompt window with Administrative privileges in the temporary directory.
- d. Run the following command:

```
agent_executable -f properties_file -i silent
```

The CA SiteMinder® agent is installed and configured on the subsequent server silently.

- e. (Optional) Delete the temporary directory from your subsequent web server.
4. Repeat Step 3 for each additional web server in your CA SiteMinder® environment that uses the configuration that the settings in your ca-wa-installer.properties file specify.

Configure the CGI Directory and CGI URL Path Settings on Windows Operating Environments (Optional)

To configure appropriate cgi-bin (ScriptAlias) settings for the Domino Web Agent, navigate to Internet Protocols tab for your server configuration in the Domino Administrator and configure the following settings:

- CGI directory: domino\html\cgi-bin
- CGI URL path: /cgi-bin

Configure Alias Settings to Enable HTML Forms Authentication Schemes (Optional)

To configure the Domino Web Agent to support HTML Forms authentication schemes perform the following tasks:

1. Create a subdirectory named "siteminderagent" in the Domino document root (\domino\html\ directory).
2. Copy all the subdirectories of *agent_home*\samples to the siteminderagent directory you created in Step 1.

agent_home

Specifies the SiteMinder Web Agent installation path.

3. To support X.509 Client Certificate and HTML Forms authentication schemes, additionally create a directory named "certooptional" in the siteminderagent directory you created in Step 1 and also copy all the subdirectories of *agent_home*\samples into it.

Chapter 3: Install and Configure an Agent for Domino on UNIX/Linux

This section contains the following topics:

[Agent Installation Compared to Agent Configuration](#) (see page 27)

[How to Install and Configure an Agent for Domino on UNIX/Linux](#) (see page 28)

Agent Installation Compared to Agent Configuration

The concepts of installation and configuration have specific meanings when used to describe CA SiteMinder® agents.

Installation means installing the CA SiteMinder® agent software on a computer system. For example, installing an agent creates directories and copies the CA SiteMinder® agent software and other settings to the computer.

Configuration occurs after installation and means the act of preparing the CA SiteMinder® agent software for a specific web server on a computer. This preparation includes registering the agent with CA SiteMinder® Policy Servers, and creating a runtime server instance for the web server that is installed on the computer.

Use the wizard-based installation and configuration programs to install and configure your agent on your first web server. The wizard-based programs create a .properties file.

Use the .properties file and the respective executable file to install or configure the agent silently on additional web servers.

How to Install and Configure an Agent for Domino on UNIX/Linux

Installing and configuring the CA SiteMinder® Agent for Domino involves several separate procedures. To install and configure the Agent for Domino, use the following process:

1. [Gather the information for the installation program](#) (see page 28).
2. [Run the wizard based installation program](#) (see page 29).
3. [Gather the information that the configuration program requires](#) (see page 29).
4. [Add the Domino Agent library file](#) (see page 33).
5. [Source the agent environment script](#) (see page 34).
6. [Set the library path variable for your operating environment](#) (see page 34).
7. [Run the configuration program](#) (see page 35).
8. (Optional) [Install and Configure the Agent for Domino on additional Domino servers silently](#) (see page 36).
9. (Optional) [Configure alias settings to enable HTML forms authentication](#) (see page 37).

Gather the Information for the Installation

Gather the following information about your web server before running the installation program for the agent:

Installation Directory

Specifies the location of the agent binary files on your web server. The *web_agent_home* variable is set to this location.

Limit: The product requires the name "webagent" for the bottom directory in the path.

Run the Installation Program on UNIX/Linux

The installation program for the CA SiteMinder® agent installs the agent on one computer at a time using the UNIX or Linux operating environments. This installation program can be run in wizard or console modes. The wizard and console-based installation program also creates a .properties file for subsequent installations and configurations using the unattended or silent method with the same settings.

For example, suppose the Agents in your environment use the same web server version, installation directory, Agent Configuration Object and Policy Servers. Use the installation wizard or console-based installation program for your first installation. Afterwards, you could create your own script to run the installation program with the .properties file the wizard or console-based installation program created.

Follow these steps:

1. Copy CA SiteMinder® agent installation executable file to a temporary directory on your web server.
2. Log in as a root user.
3. Do *one* of the following steps:
 - For wizard-based installations, run the installation executable file.
 - For console-based installations, open a command-line window and run the executable as shown in the following example:

```
executable_file_name.exe -i console
```
4. Use the information from your agent Installation worksheet to complete the installation program.

Gather the Information that the Configuration Program Requires for UNIX or Linux

Gather the following information before running the configuration program for the agent on your Domino server:

Register Host

Indicates whether you want to register a trusted host. This registration creates a trusted host object in the Policy Server and an SmHost.conf file on the web server. The agent uses this information to make an initial connection to Policy Servers when it starts. Register each agent instance as a trusted host only once.

Default: Yes

Limits: Yes, No

Admin User Name

Specifies the name of a CA SiteMinder® user with Administrative privileges that is already defined in the Policy Server. This user account requires privileges to register trusted hosts.

Admin Password

Specifies a password for the Admin User Name that is already defined in the Policy Server.

Confirm Admin Password

Repeats the password entered in the Admin Password field. This value verifies the password for the Admin User Name already defined in the Policy Server.

Trusted Host Object Name

Specifies a unique name for the trusted host you are registering. This trusted host object is stored on the Policy Server.

Host Configuration Object

Specifies the name of a Host Configuration Object that is already defined in the CA SiteMinder® Policy Server. After the agent initially connects to a Policy Server (using the SmHost.conf file settings), subsequent connections use the settings from the Host Configuration Object.

Policy Server IP Address

Specifies the Internet Protocol address of the Policy Servers to which the agent attempts to connect upon startup. If your Policy Server is behind a firewall, specify a port number also.

If a hardware load balancer is configured to expose Policy Servers in your environment through a single Virtual IP Address (VIP), enter the VIP.

Example: (IPV4) 192.168.1.105

Example: (IPV4 with the port number) 192.168.1.105:44443

Example: (IPV6) 2001:DB8::/32

Example: (IPV6) [2001:DB8::/32]:44443

FIPS Mode Setting

Specifies *one* of the following algorithms:

FIPS Compatibility/AES Compatibility

Uses algorithms existing in previous versions of CA SiteMinder® to encrypt sensitive data and is compatible with previous versions of CA SiteMinder®. If your organization does *not* require the use of FIPS-compliant algorithms, use this option.

FIPS Migration/AES Migration

Allows a transition from FIPS-compatibility mode to FIPS-only mode. In FIPS-migration mode, the environment continues to use existing CA SiteMinder® encryption algorithms as you reencrypt existing sensitive data using FIPS-compliant algorithms.

FIPS Only/AES Only

Uses *only* FIPS-compliant algorithms to encrypt sensitive data in the CA SiteMinder® environment. This setting does *not* interoperate with, *nor* is backwards-compatible with, previous versions of CA SiteMinder®.

Default: FIPS Compatibility/AES Compatibility

Note: FIPS is a US government computer security standard that accredits cryptographic modules which meet the Advanced Encryption Standard (AES).

Important! Use a compatible FIPS/AES mode (or a combination of compatible modes) for both the CA SiteMinder® agent and the CA SiteMinder® Policy Server.

Name

Specifies the name of the SmHost.conf file which contains the settings the Web Agent uses to make initial connections to a Policy Server.

Default: SmHost.conf

Location

Specifies the directory where the SmHost.conf file is stored.

Default: `web_agent_home\config`

Enable Shared Secret Rollover

Select this check box to change the shared secret that the Policy Server uses to encrypt communications to the Web Agents.

iNotes File

Specifies the location of the iNotes file for a Web Agent running on a Domino web server.

Select Servers

Indicates the web server instances that the configuration program finds on the computer. Select the check boxes of the instances you want to configure. Clear the check boxes of those instances from which you want to remove CA SiteMinder® protection.

Agent Configuration Object Name

Specifies the name of an agent configuration object (ACO) already defined on the Policy Server.

Default: AgentObj

Advanced Authentication Scheme Dialog

Specifies the advanced authentication scheme for the web server instances you selected previously.

Add the Domino Web Agent Library File (UNIX)

To make the Domino Web Agent operate properly, add the libdominowebagent.so library file to the filter files. The Web Agent library file must be the first file in the list.

Follow these steps:

1. Open Lotus Notes.
 2. Select File, Database, Open.
 3. In the Server field, select the Domino Server where you installed the Web Agent.
 4. In the Database scroll box, select the address book of the server.
Verify that names.nsf appears in the Filename field.
 5. Click Open.
The address book of the server opens.
 6. In the left pane, expand the Server folder and double-click the All Server Documents icon.
 7. Select your server and click Edit Server.
The administration console of the Domino server opens.
 8. Select the Internet Protocols tab.
 9. In the DSAPI section of the window, find the DSAPI filter file names field and enter the full path to the Domino Web Agent file. Verify that the Domino Web Agent file appears first in the list. The default location of the file is shown in the following example:
`web_agent_home\bin\libdominowebagent.so`
web_agent_home
Indicates the directory where the CA SiteMinder® Agent is installed.
Default (UNIX/Linux installations): /opt/ca/webagent
- Note:** If the Domino Web Agent is installed on an AIX operating system, the file name of the Domino Web Agent for the DSAPI filter is libdominowebagent.a
10. Click Save and Close.
 11. Restart the web server.

Source the Agent Environment Script on UNIX or Linux

The agent installation program creates an environment script in the following directory:

`web_agent_home/ca_wa_env.sh`

web_agent_home

Indicates the directory where the CA SiteMinder® Agent is installed.

Default (UNIX/Linux installations): `/opt/ca/webagent`

For most Apache-based web servers, source this script *after* doing any of the following tasks:

- Running the agent configuration program.
- Starting the web server.

Note: If you perform *all* the previous tasks in the *same* shell, only source the script *once*.

For the embedded Apache web server included with RedHat Linux, do *one* of the following tasks:

- Source the script *before* starting the httpd service.
- Source the script in the following file (instead of starting it manually each time):

`/etc/init.d/httpd`

Set the Library Path Variable on UNIX or Linux

Set the library path variable on UNIX or Linux systems before running the agent configuration program.

The following table lists the library path variables for the various UNIX and Linux operating environments:

Operating System	Name of Library Path Variable
AIX	LIBPATH
Linux	LD_LIBRARY_PATH
Solaris	LD_LIBRARY_PATH

Set the value of the library path variable to the *web_agent_home/bin* directory.

web_agent_home

Indicates the directory where the CA SiteMinder® Agent is installed.

Default (UNIX/Linux installations): /opt/ca/webagent

Run the Web Agent Configuration Program on UNIX/Linux

After gathering the information for your agent configuration, run the agent configuration program. This program creates an agent runtime instance for the web servers running on your computer.

This configuration program is wizard or console based, depending on the option you select. Running the configuration program in the wizard or console mode once creates a properties file. Use the properties file to run unattended configurations on other computers with same operating environment in the future.

Follow these steps:

1. Open the following directory on your web server:

web_agent_home/install_config_info

web_agent_home

Indicates the directory where the CA SiteMinder® Agent is installed.

Default (UNIX/Linux installations): /opt/ca/webagent

2. Use *one* of the following configuration methods:
 - For a GUI-based configuration, go to Step 3.
 - For a console-based configuration, go to Step 5.
3. Run the following executable file:

ca-wa-config.bin
4. Go to Step 8.
5. Open a Command Prompt window with root privileges.
6. Navigate to the executable file listed previously, and then run it with the following switch:

-i console
7. Go to Step 8.
8. Follow the prompts shown in the configuration program. Provide the requested values from your agent configuration worksheet.

The agent runtime instance is created for your web servers.

Run the Unattended or Silent Installation and Configuration Programs for Agents on UNIX/Linux

The unattended or silent installation option can help you automate the installation and configuration process. This method saves time if you have a large CA SiteMinder® environment that uses many agents with identical settings.

For example, suppose the Agents in your environment use the same web server version, installation directory, Agent Configuration Object and Policy Servers. Use the installation wizard or console-based installation program for your first installation. Afterwards, you could create your own script to run the installation program with the .properties file the wizard or console-based installation program created.

Follow these steps:

1. Run the following wizards on your first web server (in the order shown):
 - a. The CA SiteMinder® Web Agent Installation wizard.
 - b. The CA SiteMinder® Web Agent Configuration wizard.
2. Locate the following file on your first web server:

`web_agent_home/install_config_info/ca-wa-installer.properties`

Note: If the path contains spaces, surround it with quotes.

web_agent_home

Indicates the directory where the CA SiteMinder® Agent is installed.

Default (UNIX/Linux installations): `/opt/ca/webagent`

3. Perform each of the following steps on the subsequent web server:

Note: To automate this process, create your own customized script to execute these files on your systems. Use any scripting language that you want.

 - a. Create a temporary directory on the subsequent web server.
 - b. Copy the following files from the web server where you ran the wizards (from Steps 1 and 2) to the temporary directory on your subsequent web server:
 - The CA SiteMinder® Web Agent Installation executable file.
 - CA SiteMinder® ca-wa-installer properties file.
 - c. Open a Command Prompt window with root privileges in the temporary directory.
 - d. Run the following command:

```
agent_executable.bin -f properties_file -i silent
```

The CA SiteMinder® agent is installed and configured on the web server silently.
 - e. (Optional) Delete the temporary directory from your web server.

4. Repeat Step 3 for each additional web server in your CA SiteMinder® environment that uses the configuration that the settings in your `ca-wa-installer.properties` file specify.

Configure Alias Settings to Enable HTML Forms Authentication

To configure the Domino Web Agent to support HTML Forms authentication schemes perform the following tasks:

1. Create a subdirectory named "siteminderagent" in the Domino document root (`\domino\html\`) directory.
2. Copy all the subdirectories of `agent_home\samples` to the siteminderagent directory you created in Step 1.

agent_home

Specifies the SiteMinder Web Agent installation path.

To support X.509 Client Certificate and HTML Forms authentication schemes, additionally create a directory named "certooptional" in the siteminderagent directory you created in Step 1 and also copy all the subdirectories of `agent_home\samples` into it.

Chapter 4: Dynamic Policy Server Clusters

Earlier versions of CA SiteMinder® agents did *not* automatically discover when Policy Servers were added or removed from a cluster. The agents recognized the changes only after their respective web servers were restarted.

CA SiteMinder® 12.52 SP1 supports dynamic Policy Server clusters. Agents automatically discover Policy Servers that are added or removed from an existing cluster when dynamic Policy Server Clusters are enabled.

For example, suppose that your agent connects to a cluster of the following Policy Servers:

- 192.168.2.100
- 192.168.2.101
- 192.168.2.103
- 192.168.2.104

Suppose that you later decide to remove the server 192.168.2.103 to upgrade its operating system. In this situation, enabling dynamic Policy Server clusters lets your agents recognize the change in the membership of the cluster without restarting.

Restart your web server if you do any of the following tasks:

- Change the configuration of an existing Policy Server (using the configuration wizard).
- Create a Policy Server cluster.
- Delete a Policy Server cluster.
- Change the values for any of the following Policy Server settings:
 - EnableFailOver
 - MaxSocketsPerPort
 - MinSocketsPerPort
 - NewSocketStep
 - RequestTimeout

Connect a Web Agent to a Dynamic Policy Server Cluster

You can connect a Web Agent to one or more dynamic Policy Server clusters by modifying the SmHost.conf file on your web server.

Follow these steps:

1. Open the following file with a text editor:

`web_agent_home\config\SmHost.conf`

web_agent_home

Indicates the directory where the CA SiteMinder® agent is installed on your web server.

Default (Windows 32-bit installations only): C:\Program Files\CA\webagent

Default (Windows 64-bit installations only): C:\Program Files\CA\webagent\win64

Default (Windows 32-bit applications operating on 64-bit systems [Wow64]): C:\Program Files (x86)\webagent\win32

2. Do *one* of the following tasks:

If this Web Agent has *never* been connected to dynamic cluster of Policy Servers before, create a line (anywhere in the file) with the following text:

```
enableDynamicHCO="YES"
```

- If this Web Agent has previously been connected to a dynamic cluster of Policy Servers, change the value of the existing enableDynamicHCO parameter from "NO" to "YES".

1. Save the SmHost.conf file, and then close the text editor.
2. Restart your web server.

The Web Agent is connected to dynamic Policy Server clusters.

Chapter 5: Starting and Stopping Web Agents

Enable a Web Agent

Configure your agent parameters and then enable the agent to protect the resources on the web server.

Note: No resources are protected until you also define policies in the CA SiteMinder® Policy Server.

Follow these steps:

1. Open the WebAgent.conf file with a text editor.

Note: Agents for IIS installed on 64-bit operating environments have *two* WebAgent.conf files. One file for 32-bit Windows applications. The other file is for 64-bit Windows applications. Modify *both* WebAgent.conf files when starting or stopping the Agent for IIS.

2. Change the value of the EnableWebAgent parameter to yes.
3. Save and close the WebAgent.conf file.
4. Restart the web server (the web server itself, not the computer on which it runs).
The Web Agent is enabled.

Disable a Web Agent

If you want to stop the Web Agent from protecting the resources on your web server, disable the Web Agent.

Follow these steps:

1. Open the WebAgent.conf file with a text editor.

Note: Agents for IIS installed on 64-bit operating environments have *two* WebAgent.conf files. One file for 32-bit Windows applications. The other file is for 64-bit Windows applications. Modify *both* WebAgent.conf files when starting or stopping the Agent for IIS.

2. Change the value of the EnableWebAgent parameter to no.
3. Save and close the WebAgent.conf file.
4. Restart the web server (the web server itself, not the computer on which it runs).
The Web Agent is disabled.

Chapter 6: Upgrade a Web Agent to 12.52 SP1

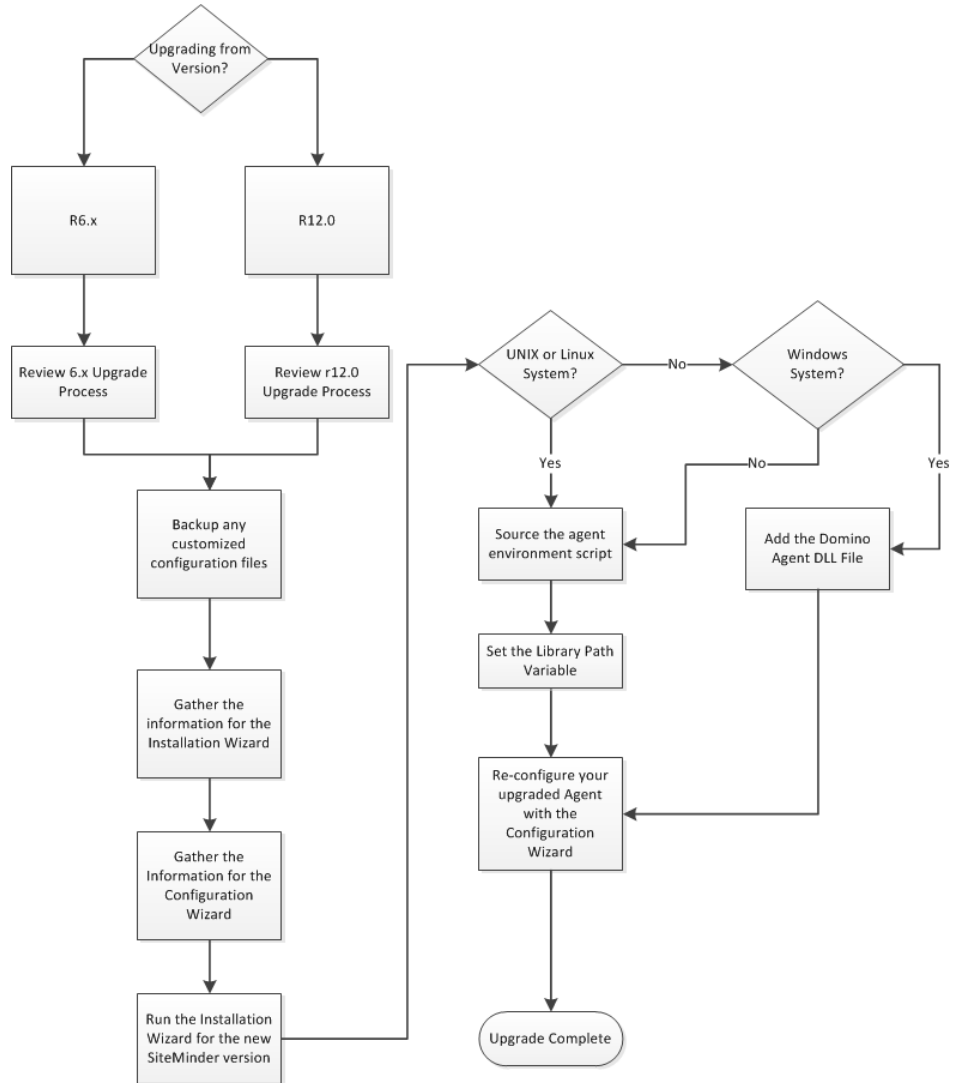
This section contains the following topics:

[Agent for Domino Upgrade Roadmap](#) (see page 44)

[How to Upgrade an Agent for Domino](#) (see page 45)

Agent for Domino Upgrade Roadmap

The following illustration shows the separate procedures that are required to upgrade an Agent for Domino to r12.5:



How to Upgrade an Agent for Domino

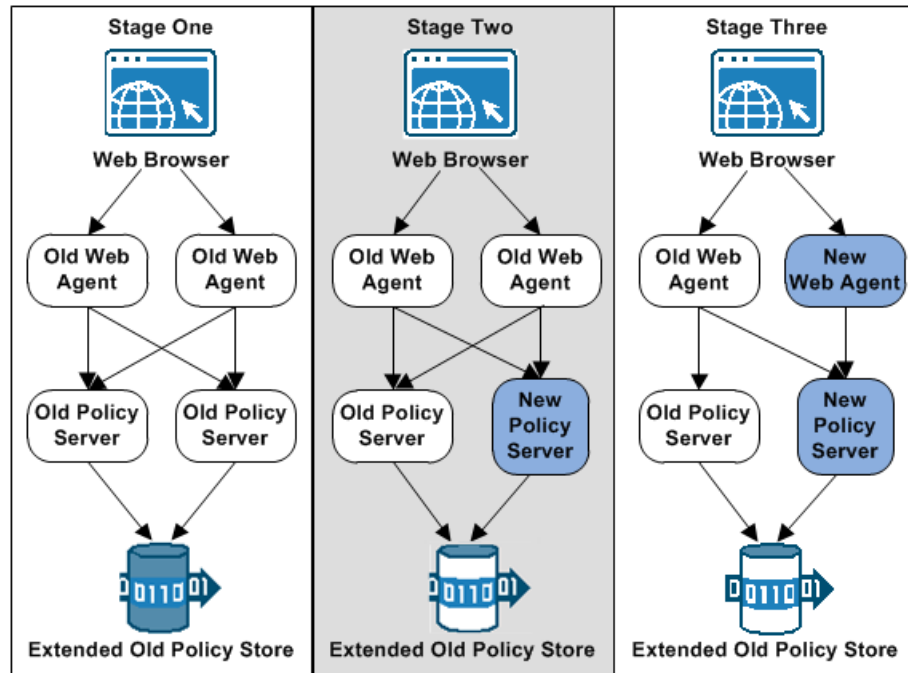
Upgrading a CA SiteMinder® agent involves several separate procedures. To prepare for an upgrade of your agent, follow these steps:

1. Use one of the following diagrams to verify that you are in the proper step of the CA SiteMinder® upgrade process for an agent upgrade:
 - Upgrade process from r6.x.
 - Upgrade process from r12.0.
2. Create backup copies of any customized CA SiteMinder® files on your Domino server. Examples of files you could have customized after installing or configuring your agent include the following files:
 - LocalConfig.conf.
 - WebAgent.conf.
3. Gather information for the following CA SiteMinder® programs.
 - Agent installation wizard.
 - Agent configuration wizard.
4. Use *one* of the following procedures to upgrade your agent:
 - [Run the installation wizard for Windows operating environments](#) (see page 47).
 - [Run the installation wizard for UNIX/Linux operating environments](#) (see page 48).
5. Perform the appropriate procedures for your operating environment from the following list:
 - For upgrades on Windows operating environments, [add the Domino web agent DLL file](#) (see page 49).
 - For upgrades on UNIX/Linux operating environments, do *all* the following steps:
 - a. [Add the Web Agent Domino Library file](#) (see page 50).
 - b. [Source the agent environment script](#) (see page 51).
 - c. [Set the library path variable](#) (see page 51).
6. Use *one* of the following procedures to configure the upgraded agent:
 - [Configure your upgraded agent on Windows operating environments](#) (see page 53).
 - [Configure your upgraded agent on UNIX/Linux operating environments](#) (see page 54).

Upgrade Process from CA SiteMinder® r6.x

An agent upgrade to 12.52 SP1 from r6.x occurs at stage three of the CA SiteMinder® upgrade process, as shown in the following illustration:

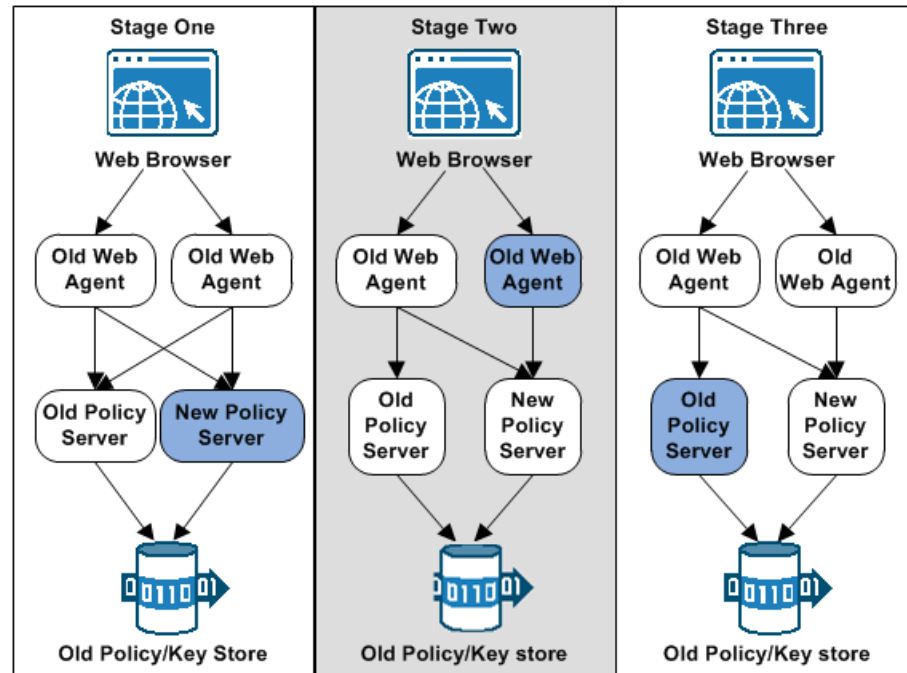
Figure 1: r6 SP5 migration. Stages 1 through 3



Upgrade Process from CA SiteMinder® r12.0

An agent upgrade to 12.52 SP1 from r12.x occurs at stage two of the CA SiteMinder® upgrade process, as shown in the following illustration:

Figure 2: r12.x migration overview.



Run the Installation Wizard to Upgrade your Agent on Windows

The installation program for the agent installs the agent on one computer at a time using the Windows operating environment. This installation program can be run in wizard or console modes. The wizard and console-based installation programs also create a .properties file for subsequent installations and configurations using the unattended or silent method with the same settings.

For example, suppose the Agents in your environment use the same web server version, installation directory, Agent Configuration Object and Policy Servers. Use the installation wizard or console-based installation program for your first installation. Afterwards, you could create your own script to run the installation program with the .properties file the wizard or console-based installation program created.

Follow these steps:

1. Copy the Web Agent installation executable file to a temporary directory on your web server.
2. Do *one* of the following steps:
 - For wizard-based installations, right-click the installation executable file, and then select Run as Administrator.
 - For console-based installations, open a command line window and run the executable as shown in the following example:

```
executable_file_name.exe -i console
```

3. Use the information that you gathered previously to complete the installation.

Run the Installation Wizard to Upgrade your Agent on UNIX/Linux

The installation program for the CA SiteMinder® agent installs the agent on one computer at a time using the UNIX or Linux operating environments. This installation program can be run in wizard or console modes. The wizard and console-based installation program also creates a .properties file for subsequent installations and configurations using the unattended or silent method with the same settings.

For example, suppose the Agents in your environment use the same web server version, installation directory, Agent Configuration Object and Policy Servers. Use the installation wizard or console-based installation program for your first installation. Afterwards, you could create your own script to run the installation program with the .properties file the wizard or console-based installation program created.

Follow these steps:

1. Copy CA SiteMinder® agent installation executable file to a temporary directory on your web server.
2. Log in as a root user.
3. Do *one* of the following steps:
 - For wizard-based installations, run the installation executable file.
 - For console-based installations, open a command-line window and run the executable as shown in the following example:

```
executable_file_name.exe -i console
```

4. Use the information from your agent Installation worksheet to complete the installation program.

Add the Web Agent Domino DLL file to your upgraded Agent on Windows

To make the Domino Web Agent operate properly, add the DOMINOWebAgent.dll file to the filter DLLs. The Web Agent DLL must be the first DLL in the list.

Follow these steps:

1. Open Lotus Notes.
2. Select File, Database, Open.
3. In the Server field, select the Domino Server where you installed the Web Agent.
4. In the Database scroll box, select the address book of the server.
Verify that names.nsf appears in the Filename field.
5. Click Open.
6. In the left pane, expand the Server folder and double-click the All Server Documents icon.
7. Select your server and click Edit Server.
8. Select the Internet Protocols tab.
9. In the DSAPI section of the window, find the DSAPI filter file names field and enter the full path to the Domino Web Agent DLL. Verify that the Domino Web Agent DLL appears first in the list. The default location of this DLL file is shown in the following example:
`web_agent_home\bin\DOMINOWebAgent.dll`
web_agent_home
Indicates the directory where the CA SiteMinder® agent is installed on your web server.
Default (Windows 32-bit installations only): C:\Program Files\CA\webagent
Default (Windows 64-bit installations only): C:\Program Files\CA\webagent\win64
Default (Windows 32-bit applications operating on 64-bit systems [Wow64]): C:\Program Files (x86)\webagent\win32
10. Click Save and Close.
11. Restart the web server. In some situations, a reboot could possibly be necessary.

Add the Web Agent Domino Library file to your upgraded Agent on UNIX/Linux

To make the Domino Web Agent operate properly, add the libdominowebagent.so library file to the filter files. The Web Agent library file must be the first file in the list.

Follow these steps:

1. Open Lotus Notes.
 2. Select File, Database, Open.
 3. In the Server field, select the Domino Server where you installed the Web Agent.
 4. In the Database scroll box, select the address book of the server.
Verify that names.nsf appears in the Filename field.
 5. Click Open.
The address book of the server opens.
 6. In the left pane, expand the Server folder and double-click the All Server Documents icon.
 7. Select your server and click Edit Server.
The administration console of the Domino server opens.
 8. Select the Internet Protocols tab.
 9. In the DSAPI section of the window, find the DSAPI filter file names field and enter the full path to the Domino Web Agent file. Verify that the Domino Web Agent file appears first in the list. The default location of the file is shown in the following example:
`web_agent_home\bin\libdominowebagent.so`
web_agent_home
Indicates the directory where the CA SiteMinder® Agent is installed.
Default (UNIX/Linux installations): /opt/ca/webagent
- Note:** If the Domino Web Agent is installed on an AIX operating system, the file name of the Domino Web Agent for the DSAPI filter is libdominowebagent.a
10. Click Save and Close.
 11. Restart the web server.

Source the Agent Environment Script After an Upgrade on UNIX/Linux

The agent installation program creates an environment script in the following directory:

`web_agent_home/ca_wa_env.sh`

web_agent_home

Indicates the directory where the CA SiteMinder® Agent is installed.

Default (UNIX/Linux installations): `/opt/ca/webagent`

For most Apache-based web servers, source this script *after* doing any of the following tasks:

- Running the agent configuration program.
- Starting the web server.

Note: If you perform *all* the previous tasks in the *same* shell, only source the script *once*.

For the embedded Apache web server included with RedHat Linux, do *one* of the following tasks:

- Source the script *before* starting the httpd service.
- Source the script in the following file (instead of starting it manually each time):
`/etc/init.d/httpd`

Set the Library Path Variable Before Configuring your Upgraded Agent on UNIX/Linux

Set the library path variable on UNIX or Linux systems before running the agent configuration program.

The following table lists the library path variables for the various UNIX and Linux operating environments:

Operating System	Name of Library Path Variable
AIX	LIBPATH
Linux	LD_LIBRARY_PATH
Solaris	LD_LIBRARY_PATH

Set the value of the library path variable to the *web_agent_home/bin* directory.

web_agent_home

Indicates the directory where the CA SiteMinder® Agent is installed.

Default (UNIX/Linux installations): `/opt/ca/webagent`

Configure your Upgraded Agent on Windows

After gathering the information for your agent configuration, run the agent configuration program. This program creates an agent runtime instance for the web servers running on your computer.

This configuration program is wizard or console based, depending on the option you select. Running the configuration program in the wizard or console mode once creates a properties file. Use the properties file to run unattended configurations on other computers with same operating environment in the future.

Follow these steps:

1. Open the following directory on your web server:

```
web_agent_home\install_config_info
```

web_agent_home

Indicates the directory where the CA SiteMinder® agent is installed on your web server.

Default (Windows 32-bit installations only): C:\Program Files\CA\webagent

Default (Windows 64-bit installations only): C:\Program Files\CA\webagent\win64

Default (Windows 32-bit applications operating on 64-bit systems [Wow64]): C:\Program Files (x86)\webagent\win32

2. Use *one* of the following configuration methods:
 - For a GUI-based configuration, go to Step 3.
 - For a console-based configuration, go to Step 5.
3. Right-click the following executable, and then select Run as Administrator:

```
ca-wa-config.exe
```
4. Go to Step 8.
5. Open a Command Prompt window with Administrator privileges.
6. Navigate to the executable file listed previously, and then run it with the following switch:

```
-i console
```
7. Go to Step 8.
8. Follow the prompts shown in the configuration program. Provide the requested values from your agent configuration worksheet.

The agent runtime instance is created for your web servers.

Configure your Upgraded Agent on UNIX/Linux

After gathering the information for your agent configuration, run the agent configuration program. This program creates an agent runtime instance for the web servers running on your computer.

This configuration program is wizard or console based, depending on the option you select. Running the configuration program in the wizard or console mode once creates a properties file. Use the properties file to run unattended configurations on other computers with same operating environment in the future.

Follow these steps:

1. Open the following directory on your web server:

`web_agent_home/install_config_info`

web_agent_home

Indicates the directory where the CA SiteMinder® Agent is installed.

Default (UNIX/Linux installations): `/opt/ca/webagent`

2. Use *one* of the following configuration methods:
 - For a GUI-based configuration, go to Step 3.
 - For a console-based configuration, go to Step 5.
3. Run the following executable file:

`ca-wa-config.bin`
4. Go to Step 8.
5. Open a Command Prompt window with root privileges.
6. Navigate to the executable file listed previously, and then run it with the following switch:

`-i console`
7. Go to Step 8.
8. Follow the prompts shown in the configuration program. Provide the requested values from your agent configuration worksheet.

The agent runtime instance is created for your web servers.

Chapter 7: Uninstall a Web Agent

This section contains the following topics:

[Notes About Uninstalling Web Agents](#) (see page 55)

[Uninstall a Web Agent from a Windows Operating Environment](#) (see page 56)

[Uninstall a Domino Agent from UNIX](#) (see page 58)

Notes About Uninstalling Web Agents

Be aware of the following:

- All Web Agents for all installed web servers will be uninstalled.
- The Password Services and Forms directories, (pw_default, jpw_default, samples_default) will be removed. However, the non-default copies of these directories (pw, jpw, samples) are not removed because these directories may contain customized files.

Uninstall a Web Agent from a Windows Operating Environment

Before you un-install the CA SiteMinder® Web Agent from a Windows operating environment, consider making backup copies of your registry settings and Web Agent configuration settings.

Be aware of the following:

- All Web Agents for all installed web servers will be uninstalled.
- The Password Services and Forms directories, (pw_default, jpw_default, samples_default) will be removed. However, the non-default copies of these directories (pw, jpw, samples) are not removed because these directories may contain customized files.

Follow these steps:

1. Stop the web server.
2. Remove the configuration settings for the agents on your server with *one* of the following procedures:
 - To un-configure the agent with the wizard, go to Step 3.
 - To un-configure the agent with the console-based program, go to Step 6.

3. Click Start, All Programs, CA, CA SiteMinder®.

A shortcut to the Web Agent Configuration wizard appears.

4. Right-click the shortcut, and then select Run as administrator.

Important! If you are running this wizard on Windows Server 2008, run the executable file with administrator permissions. Use these permissions even if you are logged in to the system as an administrator. For more information, see the release notes for your CA SiteMinder® component.

The Web Agent Configuration wizard starts.

5. Clear the check boxes from the agent instances configured on your web server, and complete the wizard.
6. Open a Command Prompt window with root privileges.
7. Navigate to the ca-wa-config.exe file, and then run it with the following switch:

```
-i console
```
8. Un-configure the agent instances configured on your web server. Wait for the configuration program to finish, then go to Step 9.
9. Choose *one* of the following procedures:
 - To remove the Web Agent using the wizard, go to Step 10.
 - To remove the Web Agent using the console-based program, go to Step 15.
10. Click Start, Control Panel, Programs and Features.

A list of installed programs appears.

11. Click CA CA SiteMinder® Web Agent *version_number*.
12. Click Uninstall/Change.

The uninstallation wizard appears.

13. Review the information in the Uninstall CA SiteMinder® Web Agent dialog, then click Uninstall.

The wizard removes the web agent.

14. Wait for the wizard to finish, then go to Step 17.
15. Open a command-line window.
16. Navigate to the following directory.

web_agent_home

web_agent_home

Indicates the directory where the CA SiteMinder® Agent is installed on your web server.

Default (Windows 32-bit installations of CA SiteMinder® IIS Web Agents only): C:\Program Files\CA\webagent

Default (Windows 64-bit installations [CA SiteMinder® Web Agents for IIS only]): C:\Program Files\CA\webagent\win64

Default (Windows 32-bit applications operating on 64-bit systems [Wow64 with CA SiteMinder® Web Agents for IIS only]): C:\Program Files(x86)\webagent\win32

17. Run the following command:

```
ca-wa-uninstall.cmd -i console
```

18. Wait for the un-installation program to finish, then go to Step 19.
19. Start the web server.

Important! Delete the ZeroG registry file from the following location after uninstalling the Web Agent: C:\Program Files\ZeroG Registry\com.zerog.registry.xml

Uninstall a Domino Agent from UNIX

These instructions are for GUI and Console Mode removal of an agent.

Be aware of the following:

- All Web Agents for all installed web servers will be uninstalled.
- The Password Services and Forms directories, (`pw_default`, `jpw_default`, `samples_default`) will be removed. However, the non-default copies of these directories (`pw`, `jpw`, `samples`) are not removed because these directories may contain customized files.

Note: Removing a Web Agent from a 64-bit SuSE Linux 10 system requires additional preparations.

The steps for the two modes are the same, with these exceptions for Console Mode:

- Select an option by entering a corresponding number.
- Press Enter after each step to proceed through the process. The prompts guide you through the process.

Note: Before you uninstall, we recommend copying your Web Agent configuration settings to have as a backup.

Follow these steps:

1. Stop the web server.
2. Log in to the UNIX system.
3. Run the configuration wizard to remove the configuration settings of the agents that you want to remove.
4. Navigate to the directory where the Web Agent is installed:
`web_agent_home/install_config_info/ca-wa-uninstall`
5. If necessary, verify that you have execute permissions on the uninstallation program by entering `chmod +x uninstall`.
6. From a console window, enter one of the following commands:
 - GUI mode: `./uninstall`
 - Console mode: `./uninstall -i console`

The uninstallation program starts.

7. Read the information in the dialog to confirm the removal of the Web Agent, then click Uninstall. The Web Agent is removed from the system.

8. Click Done to exit the uninstallation program.
9. Change to your home directory (the current directory has been deleted).
10. Restart the web servers.

Chapter 8: Troubleshooting

This section contains the following topics:

[Domino Web Agent Not Enabled but the Web Server has Started](#) (see page 61)

[Domino Agent Cannot Initialize When Local Configuration Mode is Used](#) (see page 61)

[Non-english Input Characters Contain Junk Characters](#) (see page 62)

Domino Web Agent Not Enabled but the Web Server has Started

Valid on Domino

Symptom:

The Domino Web Agent is not enabled even though the web server has started.

Solution:

Do the following:

- In the WebAgent.conf file, set the EnableWebAgent parameter to yes.
- Ensure that the DOMINOWebAgent.dll file has been added to the filter DLLs. The Web Agent DLL must be the first DLL in the list.

More Information

[Add the Domino Web Agent DLL \(Windows\)](#) (see page 22)

Domino Agent Cannot Initialize When Local Configuration Mode is Used

Valid on Domino

Symptom:

Domino Agent cannot initialize in local configuration mode.

Solution:

Check that the full path to the WebAgent.conf file is added to the notes.ini file.

Non-english Input Characters Contain Junk Characters

Valid on UNIX/Linux

Symptom:

Some non-English input characters are not displayed correctly in the console window.

Solution:

Verify the terminal settings of your console window. Confirm that the console does not clear high (eight) bit of input characters. Execute the following command:

```
stty -istrip
```

Appendix A: Worksheets

This section contains the following topics:

[Agent Installation Worksheet](#) (see page 63)

[Web Agent Configuration Worksheet for Domino](#) (see page 63)

Agent Installation Worksheet

Use the following table to record the information that the agent installation program requires:

Information Needed	Your Value
Installation Directory	

Web Agent Configuration Worksheet for Domino

Use the following table to record the information that the Agent configuration program requires for your Domino server:

Information Needed	Your Value
Host Registration (Yes/No)	
Admin User Name	
Admin Password	
Enable Shared Secret Rollover	
Trusted Host Name	
Host Configuration Object	
IP Address	
FIPS Mode Setting	
SmHost.conf file Name	
SmHost.conf file Location	
Select Server	
iNotes File Location	

Information Needed	Your Value
Agent Configuration Object Name	

Index

A

- Add the Domino Web Agent DLL (Windows) • 22
- Add the Domino Web Agent Library File (UNIX) • 33
- Add the Web Agent Domino DLL file to your upgraded Agent on Windows • 49
- Add the Web Agent Domino Library file to your upgraded Agent on UNIX/Linux • 50
- Agent for Domino Upgrade Roadmap • 44
- Agent Installation Compared to Agent Configuration • 17, 27
- Agent Installation Worksheet • 63

C

- CA Technologies Product References • 3
- Configure Alias Settings to Enable HTML Forms Authentication • 37
- Configure Alias Settings to Enable HTML Forms Authentication Schemes (Optional) • 25
- Configure the CGI Directory and CGI URL Path Settings on Windows Operating Environments (Optional) • 25
- Configure your Upgraded Agent on UNIX/Linux • 54
- Configure your Upgraded Agent on Windows • 53
- Connect a Web Agent to a Dynamic Policy Server Cluster • 40
- Contact CA Technologies • 3

D

- Disable a Web Agent • 42
- DLLs
 - adding, Domino Web Agent • 22
- Documentation Changes • 4
- Domino Agent Cannot Initialize When Local Configuration Mode is Used • 61
- Domino Server Preparations for Linux Operating Environments • 11
- Domino Server Preparations for UNIX Operating Environments • 11
- Domino Web Agent
 - adding DLLs • 22
- Domino Web Agent Not Enabled but the Web Server has Started • 61
- Dynamic Policy Server Clusters • 39

E

- Enable a Web Agent • 41

G

- Gather the Information for the Installation • 28
- Gather the Information for the Installation Program • 18
- Gather the Information that the Configuration Program Requires for UNIX or Linux • 29
- Gather the Information that the Configuration Program Requires on Windows • 19

H

- Hardware Requirements for CA SiteMinder® Agents • 8
- How to Install and Configure an Agent for Domino on UNIX/Linux • 28
- How to Install and Configure an Agent for Domino on Windows • 18
- How to Prepare for a Web Agent Installation on Domino • 10
- How to Upgrade an Agent for Domino • 45

I

- Install and Configure an Agent for Domino on UNIX/Linux • 27
- Install and Configure an Agent for Domino on Windows • 17

L

- Locate the Platform Support Matrix • 10

N

- Non-english Input Characters Contain Junk Characters • 62
- Notes About Uninstalling Web Agents • 55

O

- Only Domino Server Procedures in this Guide • 7

P

- Policy Server Requirements • 14

Preparation • 7
Preparation Roadmap for Domino Servers • 9

R

Required Linux Libraries • 12
Required Linux Patches • 12
Required Solaris Patches • 11
Run the Installation Program on UNIX/Linux • 29
Run the Installation Program on Windows • 18
Run the Installation Wizard to Upgrade your Agent on UNIX/Linux • 48
Run the Installation Wizard to Upgrade your Agent on Windows • 47
Run the Unattended or Silent Installation and Configuration Programs for Agents on UNIX/Linux • 36
Run the Unattended or Silent Installation and Configuration Programs for Subsequent Agents on Windows • 24
Run the Web Agent Configuration Program on UNIX/Linux • 35
Run the Web Agent Configuration Program on Windows • 23

S

Set the DISPLAY For CA SiteMinder® Agent Installations on UNIX • 11
Set the Library Path Variable Before Configuring your Upgraded Agent on UNIX/Linux • 51
Set the Library Path Variable on UNIX or Linux • 34
Source the Agent Environment Script After an Upgrade on UNIX/Linux • 51
Source the Agent Environment Script on UNIX or Linux • 34
Starting and Stopping Web Agents • 41

T

Troubleshooting • 61

U

Uninstall a Domino Agent from UNIX • 58
Uninstall a Web Agent • 55
Uninstall a Web Agent from a Windows Operating Environment • 56
Upgrade a Web Agent to 12.52 SP1 • 43
Upgrade Process from CA SiteMinder® r12.0 • 47
Upgrade Process from CA SiteMinder® r6.x • 46

W

Web Agent Configuration Worksheet for Domino • 63
Worksheets • 63