

CA IDMS™ Server

Release Notes

r17



This Documentation, which includes embedded help systems and electronically distributed materials, (hereinafter referred to as the "Documentation") is for your informational purposes only and is subject to change or withdrawal by CA at any time. This Documentation is proprietary information of CA and may not be copied, transferred, reproduced, disclosed, modified or duplicated, in whole or in part, without the prior written consent of CA.

If you are a licensed user of the software product(s) addressed in the Documentation, you may print or otherwise make available a reasonable number of copies of the Documentation for internal use by you and your employees in connection with that software, provided that all CA copyright notices and legends are affixed to each reproduced copy.

The right to print or otherwise make available copies of the Documentation is limited to the period during which the applicable license for such software remains in full force and effect. Should the license terminate for any reason, it is your responsibility to certify in writing to CA that all copies and partial copies of the Documentation have been returned to CA or destroyed.

TO THE EXTENT PERMITTED BY APPLICABLE LAW, CA PROVIDES THIS DOCUMENTATION "AS IS" WITHOUT WARRANTY OF ANY KIND, INCLUDING WITHOUT LIMITATION, ANY IMPLIED WARRANTIES OF MERCHANTABILITY, FITNESS FOR A PARTICULAR PURPOSE, OR NONINFRINGEMENT. IN NO EVENT WILL CA BE LIABLE TO YOU OR ANY THIRD PARTY FOR ANY LOSS OR DAMAGE, DIRECT OR INDIRECT, FROM THE USE OF THIS DOCUMENTATION, INCLUDING WITHOUT LIMITATION, LOST PROFITS, LOST INVESTMENT, BUSINESS INTERRUPTION, GOODWILL, OR LOST DATA, EVEN IF CA IS EXPRESSLY ADVISED IN ADVANCE OF THE POSSIBILITY OF SUCH LOSS OR DAMAGE.

The use of any software product referenced in the Documentation is governed by the applicable license agreement and such license agreement is not modified in any way by the terms of this notice.

The manufacturer of this Documentation is CA.

Provided with "Restricted Rights." Use, duplication or disclosure by the United States Government is subject to the restrictions set forth in FAR Sections 12.212, 52.227-14, and 52.227-19(c)(1) - (2) and DFARS Section 252.227-7014(b)(3), as applicable, or their successors.

Copyright © 2009 CA. All rights reserved. All trademarks, trade names, service marks, and logos referenced herein belong to their respective companies.

Contact CA Technologies

Contact CA Support

For your convenience, CA Technologies provides one site where you can access the information that you need for your Home Office, Small Business, and Enterprise CA Technologies products. At <http://ca.com/support>, you can access the following resources:

- Online and telephone contact information for technical assistance and customer services
- Information about user communities and forums
- Product and documentation downloads
- CA Support policies and guidelines
- Other helpful resources appropriate for your product

Providing Feedback About Product Documentation

If you have comments or questions about CA Technologies product documentation, you can send a message to techpubs@ca.com.

To provide feedback about CA Technologies product documentation, complete our short customer survey which is available on the CA Support website at <http://ca.com/docs>.

Contents

Chapter 1: New Features	7
ODBC Driver Enhancements.....	7
ODBC 3.5 compliance.....	7
Wire Protocol ODBC Driver	8
64-bit ODBC Driver	9
Named Parameters	10
JDBC Driver Enhancements	10
JDBC 4.0 Compliance.....	10
Wire Protocol	10
64-bit JDBC Driver	11
Scrollable Result Sets	11
Named Parameters	11
Hibernate Dialect	11
Support for New Features in CA IDMS r17	11
Procedure Result Sets	11
SYSCA.SINGLETON_NULL	12
Enhanced ANSI/ISO Join Support	12
Other New Features	12
ODBC Administrator	12
Log File Rollover	15
Pseudo Converse Options	16
HTML Help.....	16

Chapter 1: New Features

This section contains the following topics:

[ODBC Driver Enhancements](#) (see page 7)

[JDBC Driver Enhancements](#) (see page 10)

[Support for New Features in CA IDMS r17](#) (see page 11)

[Other New Features](#) (see page 12)

ODBC Driver Enhancements

The enhancements in this section apply to the ODBC driver. ODBC is an API defined by Microsoft that can be used to access any tabular data source from the Windows platform. These enhancements provide:

- Improved performance with direct connectivity into the CA IDMS address space
- Easier portability of applications to CA IDMS
- Improved integration with other applications
- Improved support for the ODBC.NET provider

ODBC 3.5 compliance

The ODBC driver now supports the ODBC 3.5 specification standard for improved compatibility with customer applications and third-party tools. ODBC 3.5 is the current standard for ODBC compliance.

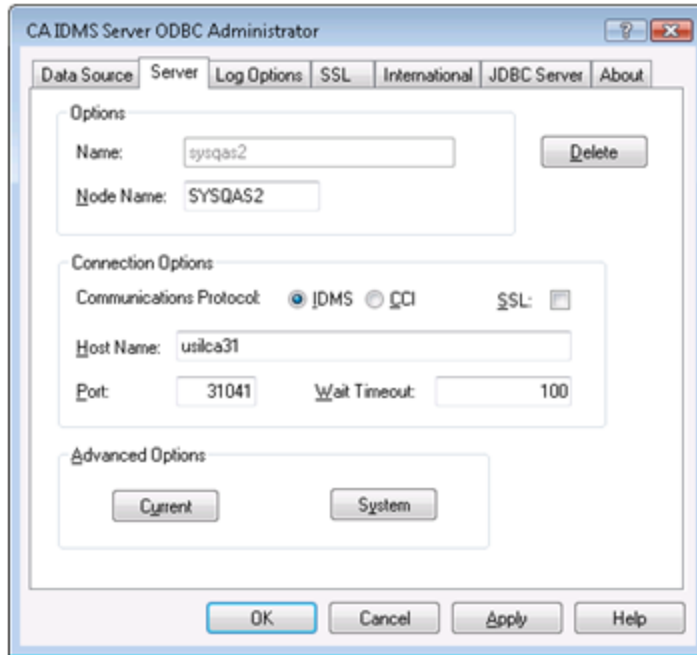
For more information, see the chapter, "ODBC Programmer's Reference," in the *CA IDMS Server User Guide*.

Note: The ODBC driver name is now "CA IDMS." The driver now conforms to ODBC "best practices" for the location of driver executable files, and installs them in the product directory instead of the Windows directory. This requires changes to existing data source definitions. CA IDMS Server r17 can be installed on the same machine as r16.1 or earlier. You can use the Data Source Migration Utility to convert or copy existing data sources to r17.

Wire Protocol ODBC Driver

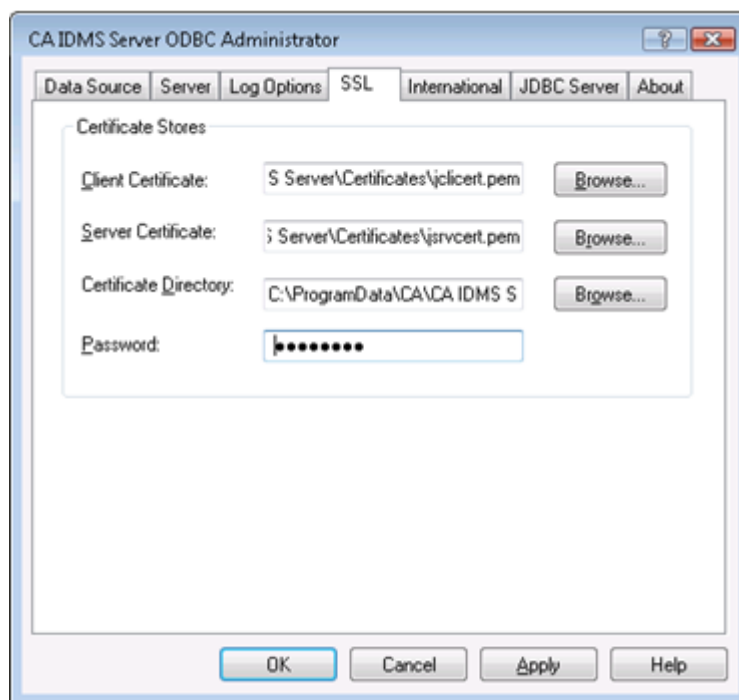
The ODBC driver now supports wire protocol communications directly from Windows to the CA IDMS system, using TCP/IP. This improves performance, scalability, and stability when used with CA IDMS r17, or later, on z/OS and z/VSE. This feature also enables use of the ODBC driver with CA IDMS r17 on z/VM.

After setting up the listener on the CA IDMS system, you enable this feature in the Data Source Server definition.



Changing the "Communications Protocol" setting results in the removal of any "Task Code" specification, made on the "Current" Advanced Server Options dialog box. The Task Code setting is sensitive to the Communications Protocol in use. By default (when unspecified), connections established using the CCI Protocol run under Task Code CASERVER, and connections established using the IDMS Protocol run under Task Code IDMSJSRV. Any user-defined versions of these tasks should be cloned from the appropriate task, based on the desired Communications Protocol. Any change to the Communications Protocol setting requires the user to re-input their user-defined Task Code.

The wire protocol driver supports secured communication using SSL and AT-TLS on z/OS.



For more information, see the chapters, "Setting Up Your CA IDMS System," and "Configuring CA IDMS Server on Windows," in the *CA IDMS Server User Guide*.

64-bit ODBC Driver

The ODBC driver and native SQL client interface now support 64-bit Windows on AMD and Intel x64 processors. This allows 64-bit applications to use the CA IDMS ODBC driver.

You can also install the 32-bit driver, which uses WOW64, to support 32-bit applications on a 64-bit Windows operating system.

Named Parameters

The ODBC driver now supports the use of named parameters in CALL statements that are included in the standard procedure escape syntax, allowing applications to set and get parameters by name.

For more information, see the chapter, "ODBC Programmer's Reference," in the *CA IDMS Server User Guide*.

JDBC Driver Enhancements

The enhancements in this section apply to the JDBC driver. JDBC is an API defined by Sun Microsystems that can be used to access any tabular data source from the Java platform. These enhancements provide:

- Improved connection management
- Expanded granularity with error reporting
- Easier Java application development

JDBC 4.0 Compliance

The JDBC driver now supports the JDBC 4.0 specification for improved connection management and compatibility with customer applications and third-party tools.

For more information, see the chapter, "JDBC Programmer's Reference," in the *CA IDMS Server User Guide*. You can find an overview of the new features of JDBC 4.0 in section 3.1 of the *JDBC 4.0 Specification (JSR 221)*.

Note: JDBC 4.0 is a feature of Java 1.6, and the CA IDMS Server r17 JDBC driver requires Java 1.6, or later. However, if you must run an earlier version of Java, the CA IDMS Server r16.1 JDBC driver jar file is included on the r17 CD.

Wire Protocol

The type 4 JDBC driver already provides wire protocol support when connected to a CA IDMS r16 SP2, or later, system.

64-bit JDBC Driver

The type 4 JDBC driver already provides 64-bit support because the JDBC driver supports the 64-bit Java Runtime Environment (JRE).

Note: The type 2 JDBC driver is now supported on 64-bit Windows.

Scrollable Result Sets

The JDBC driver now supports scrollable result sets by caching rows as they are fetched from CA IDMS. This enables the use of standard Java RowSet implementations that implement disconnected row sets, updateable row sets, and other advanced features.

For more information, see the chapter, "JDBC Programmer's Reference," in the *CA IDMS Server User Guide*.

Named Parameters

The JDBC driver now supports the use of named parameters in CALL statements that are included in the standard procedure escape syntax, allowing applications to set and get parameters by name rather than by using ordinal numbers.

For more information, see the chapter, "JDBC Programmer's Reference," in the *CA IDMS Server User Guide*.

Hibernate Dialect

CA IDMS Server r17 now includes a Hibernate dialect specifically designed for CA IDMS SQL that enables easier Java application development. Hibernate provides object-relational mapping for Java objects persistence in relational databases, so Java developers can free to concentrate on the business logic of their application.

Support for New Features in CA IDMS r17

The enhancements in this section apply to both the ODBC and JDBC drivers. These enhancements support new features in CA IDMS r17.

Procedure Result Sets

The ODBC and JDBC drivers support the use of standard APIs to return one or more result sets from a procedure call when connected to a CA IDMS r17, or later, system.

SYSCA.SINGLETON_NULL

The ODBC and JDBC drivers now use the SYSCA.SINGLETON_NULL pseudo table for metadata APIs that SELECT from a real table to invoke scalar functions or check the status of the connection. This can prevent authorization errors that might otherwise occur.

Enhanced ANSI/ISO Join Support

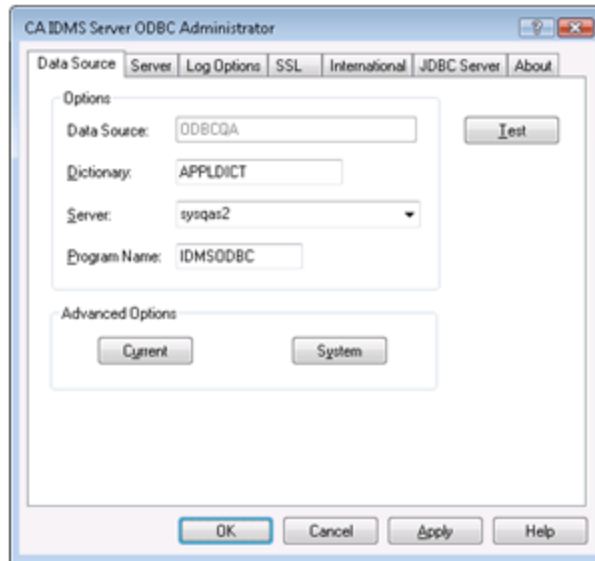
The ODBC and JDBC drivers now describe the support provided by the CA IDMS r17 ANSI/ISO JOIN enhancements through metadata API's.

Other New Features

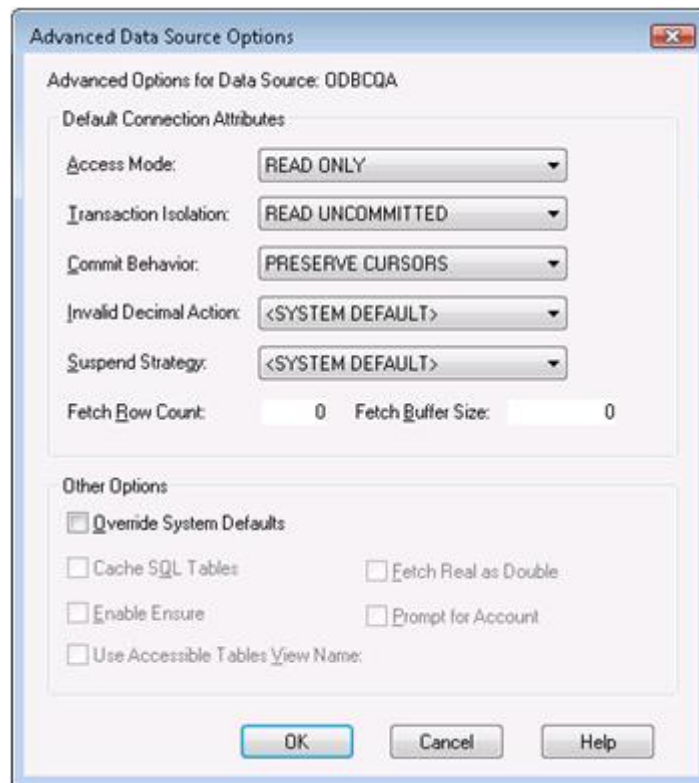
The enhancements in this section apply to the ODBC and JDBC drivers. These enhancements provide better platform support and ease of use.

ODBC Administrator

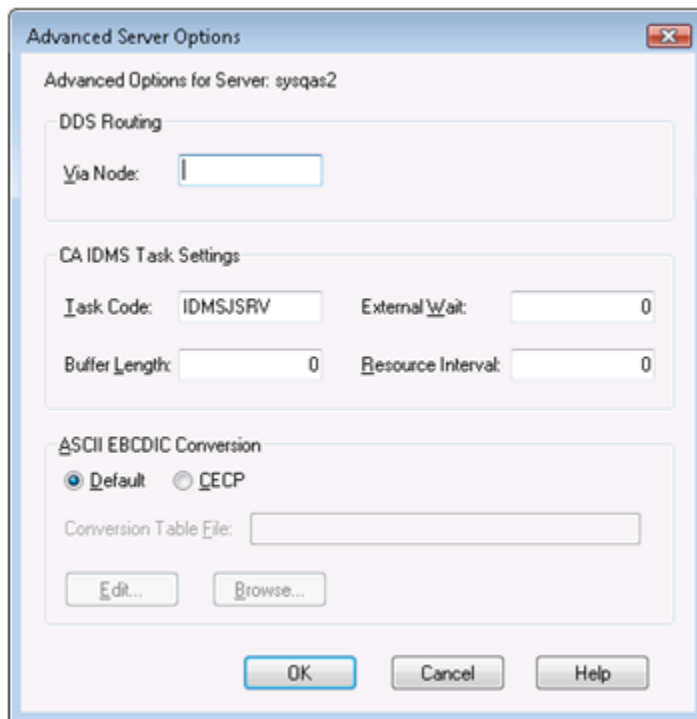
The ODBC Administrator has been streamlined, with less commonly used options moved from the Data Source and Server definitions to Advanced Options dialogs. This makes data sources simpler to define.



Most of these Advanced Options can now be set as global options that apply to all Data Source or Server definitions.



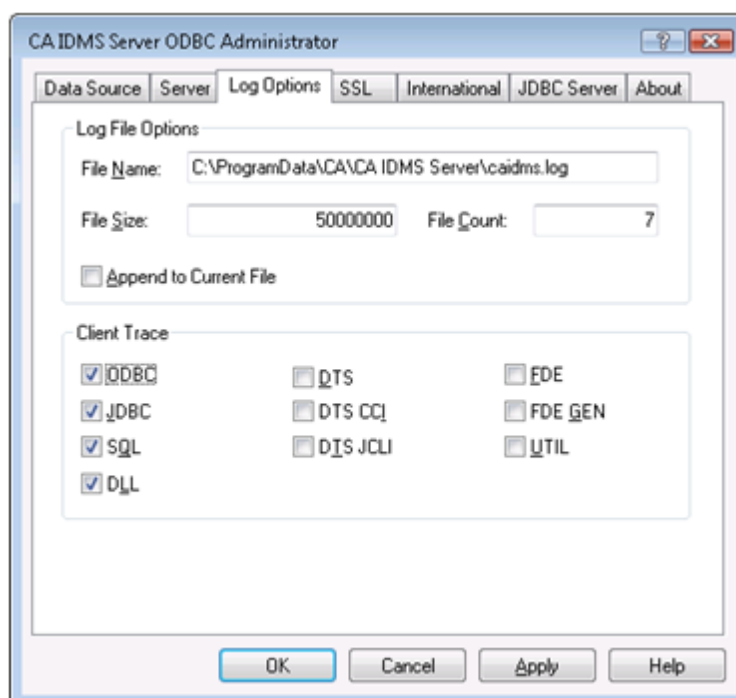
Code pages can now be specified for individual Server definitions, allowing the use of specific code pages for each CA IDMS system.



Log File Rollover

The CA IDMS Server native logging facilities on Windows and z/OS now support a maximum log file size. When the log file reaches this size, the existing file is renamed and a new log file is started. This prevents log files from filling up the file system and makes them easier to send to CA Technical Support.

You can configure the maximum log file size and the number of log files to keep. The default for both values is set to zero. This maintains the current behavior, which is unlimited file size is and no previous versions are kept.

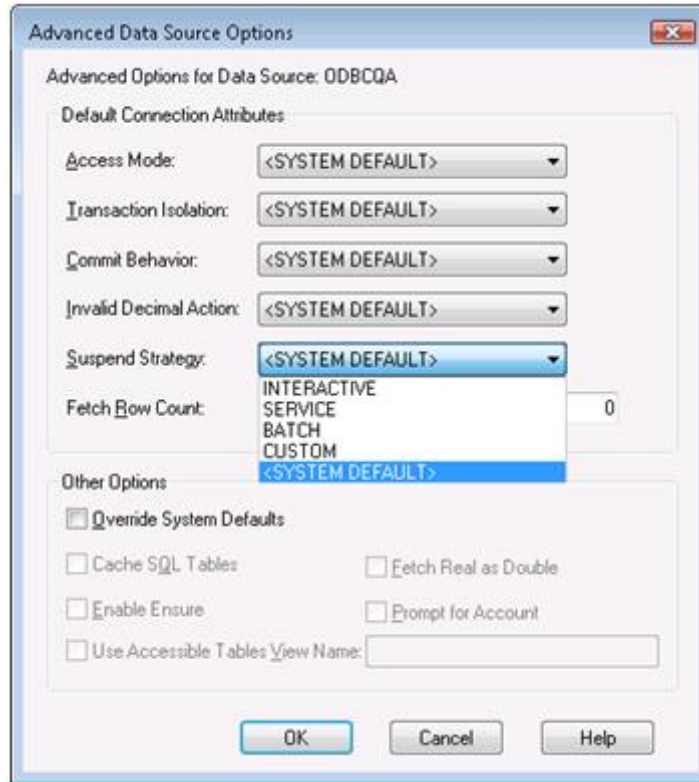


For more information, see the chapter "Setting Up Your CA IDMS System" in the *CA IDMS Server User Guide*.

Pseudo Converse Options

The ODBC and JDBC drivers now support a "suspend strategy," that simplifies how you can control the use of pseudo-conversational processing, including a new option that disables pseudo-conversational processing completely for high volume batch-type applications. This allows you to optimize how tasks are started for your applications.

You can set the set strategy using the CA IDMS Server ODBC Administrator or JDBC DataSource properties.



For more information, see the chapters, "Setting Up Your CA IDMS System," "Configuring CA IDMS Server on Windows," and "JDBC Programmer's Reference," in the *CA IDMS Server User Guide*.

HTML Help

CA IDMS Server r17 provides online HTML help compatible with Windows Vista.

Note: WinHelp is no longer supported on Windows Vista because it is considered a security risk.