

CA ERwin Mart Server

Release Notes

Release 9.2.0



This Documentation, which includes embedded help systems and electronically distributed materials, (hereinafter referred to as the "Documentation") is for your informational purposes only and is subject to change or withdrawal by CA at any time.

This Documentation may not be copied, transferred, reproduced, disclosed, modified or duplicated, in whole or in part, without the prior written consent of CA. This Documentation is confidential and proprietary information of CA and may not be disclosed by you or used for any purpose other than as may be permitted in (i) a separate agreement between you and CA governing your use of the CA software to which the Documentation relates; or (ii) a separate confidentiality agreement between you and CA.

Notwithstanding the foregoing, if you are a licensed user of the software product(s) addressed in the Documentation, you may print or otherwise make available a reasonable number of copies of the Documentation for internal use by you and your employees in connection with that software, provided that all CA copyright notices and legends are affixed to each reproduced copy.

The right to print or otherwise make available copies of the Documentation is limited to the period during which the applicable license for such software remains in full force and effect. Should the license terminate for any reason, it is your responsibility to certify in writing to CA that all copies and partial copies of the Documentation have been returned to CA or destroyed.

TO THE EXTENT PERMITTED BY APPLICABLE LAW, CA PROVIDES THIS DOCUMENTATION "AS IS" WITHOUT WARRANTY OF ANY KIND, INCLUDING WITHOUT LIMITATION, ANY IMPLIED WARRANTIES OF MERCHANTABILITY, FITNESS FOR A PARTICULAR PURPOSE, OR NONINFRINGEMENT. IN NO EVENT WILL CA BE LIABLE TO YOU OR ANY THIRD PARTY FOR ANY LOSS OR DAMAGE, DIRECT OR INDIRECT, FROM THE USE OF THIS DOCUMENTATION, INCLUDING WITHOUT LIMITATION, LOST PROFITS, LOST INVESTMENT, BUSINESS INTERRUPTION, GOODWILL, OR LOST DATA, EVEN IF CA IS EXPRESSLY ADVISED IN ADVANCE OF THE POSSIBILITY OF SUCH LOSS OR DAMAGE.

The use of any software product referenced in the Documentation is governed by the applicable license agreement and such license agreement is not modified in any way by the terms of this notice.

The manufacturer of this Documentation is CA.

Provided with "Restricted Rights." Use, duplication or disclosure by the United States Government is subject to the restrictions set forth in FAR Sections 12.212, 52.227-14, and 52.227-19(c)(1) - (2) and DFARS Section 252.227-7014(b)(3), as applicable, or their successors.

Copyright © 2013 CA. All rights reserved. All trademarks, trade names, service marks, and logos referenced herein belong to their respective companies.

Contact CA Technologies

Understanding your Support

Review [support maintenance programs and offerings](#).

Registering for Support

Access the CA Support [online registration site](#) to register for product support.

Accessing Technical Support

For your convenience, CA Technologies provides easy access to "One Stop" support for all editions of [CA ERwin Data Modeler](#), and includes the following:

- Online and telephone contact information for technical assistance and customer services
- Information about user communities and forums
- Product and documentation downloads
- CA Support policies and guidelines
- Other helpful resources appropriate for your product

For information about other Home Office, Small Business, and Enterprise CA Technologies products, visit <http://ca.com/support>.

Provide Feedback

If you have comments or questions about CA Technologies product documentation, you can send a message to techpubs@ca.com.

If you would like to provide feedback about CA Technologies product documentation, complete our short [customer survey](#), which is also available on the CA Support website, found at <http://ca.com/docs>.

CA ERwin Data Modeler News and Events

Visit www.erwin.com to get up-to-date news, announcements, and events. View video demos and read up on customer success stories and articles by industry experts.

Contents

Chapter 1: Welcome 9

New Features and Enhancements in CA ERwin Mart Server	9
Database Client for Oracle and Sybase Marts	9

Chapter 2: Install and Configure an Oracle Mart 11

How to Install and Configure an Oracle Mart	12
Mart Architecture	14
Install a Mart or Upgrade a Mart?	15
Review the Prerequisites for an Oracle Mart.....	15
Create the Mart Database and Perform the Additional Tasks	18
Install CA ERwin Mart Server	22
Use Mart Server as a Windows Service.....	27
Initialize an Oracle Mart.....	28
Log In to CA ERwin Mart Administrator and Configure Settings.....	30
How to Upgrade a Mart from r9.0.0 to r9.2.0.....	31
Review the Prerequisites	32
Upgrade the Mart Server	33
Configure the Mart Server	33
Restart the Mart Server Service	36
Log In to CA ERwin Mart Administrator	37
Change the Mart Database Server	38
Troubleshooting	38
Port out of range.....	39
Call failed on the server	39
Application Internal Error	40
ORA-12514 TNS listener does not currently know of service requested in connect descriptor.....	40
Mart already exists. Specify another database name	41
Initialize page is not loading in Internet Explorer	41
The Tomcat server is not starting properly. The Configure button is disabled.....	42
A connection with the server could not be established.....	42
The server name or address could not be resolved	42
Invalid user ID or password.....	43
Error 12029	43
Unable to load the web page from my web browser	43
Test connection failed.....	44
Internet Explorer Redirects to a Different Link	46

Chapter 3: Install and Configure a SQL Server Mart 47

How to Install and Configure a SQL Server Mart.....	48
Mart Architecture	50
Install a Mart or Upgrade a Mart?	51
Review the Prerequisites for a SQL Server Mart	51
Create a SQL Server Database.....	54
Install CA ERwin Mart Server	55
Use Mart Server as a Windows Service.....	60
Initialize a SQL Server Mart	61
Log In to CA ERwin Mart Administrator and Configure Settings.....	62
How to Upgrade a Mart from r9.0.0 to r9.2.0.....	63
Review the Prerequisites	64
Upgrade the Mart Server	65
Configure the Mart Server	65
Restart the Mart Server Service	68
Log In to CA ERwin Mart Administrator	69
Change the Mart Database Server	70
Troubleshooting	70
Port out of range.....	71
Call failed on the server	71
Application Internal Error	72
Mart already exists. Specify another database name	72
Initialize page is not loading in Internet Explorer	73
The Tomcat server is not starting properly. The Configure button is disabled.....	73
A connection with the server could not be established.....	74
The server name or address could not be resolved	74
Invalid user ID or password	74
Error 12029	75
Unable to load the web page from my web browser	75
Test connection failed.....	75
Internet Explorer Redirects to a Different Link	77

Chapter 4: Install and Configure a Sybase Mart 79

How to Install and Configure a Sybase Mart.....	80
Mart Architecture	82
Install a Mart or Upgrade a Mart?	83
Review the Prerequisites for a Sybase Mart	83
Create a Sybase Database	86
Install CA ERwin Mart Server	88
Use Mart Server as a Windows Service.....	93
Initialize Mart	94

Initialize a Sybase Mart	94
Log In to CA ERwin Mart Administrator and Configure Settings.....	96
How to Upgrade a Mart from r9.0.0 to r9.2.0.....	97
Review the Prerequisites	98
Upgrade the Mart Server	99
Configure the Mart Server	99
Restart the Mart Server Service	102
Log In to CA ERwin Mart Administrator	103
Change the Mart Database Server	104
Troubleshooting	104
Port out of range.....	105
Call failed on the server	105
Application Internal Error	106
ORA-12514 TNS listener does not currently know of service requested in connect descriptor.....	106
Mart already exists. Specify another database name	107
Initialize page is not loading in Internet Explorer	107
The Tomcat server is not starting properly. The Configure button is disabled.....	108
A connection with the server could not be established.....	108
The server name or address could not be resolved	108
Invalid user ID or password.....	109
Error 12029	109
Unable to load the web page from my web browser	109
Test connection failed.....	110
Internet Explorer Redirects to a Different Link	112
Chapter 5: Create a Customized Security Message	112
Chapter 6: Prepare to Use IIS with Mart	113
Configure IIS Web Server	114
Implement SSL for IIS	116
Chapter 7: Mart Server Log Files	116
Chapter 8: Documentation Formats and Deliverables	116

Chapter 1: Welcome

Welcome to the CA ERwin Mart Server (Mart Server) Release Notes. Mart Server is an essential component in CA ERwin DM Version 9.0.0, 9.1.0, and 9.2.0 Mart. The Mart Server is deployed on a web server and includes the software to communicate with the Mart Database and CA ERwin DM.

This section contains the following topics:

[New Features and Enhancements in CA ERwin Mart Server](#) (see page 9)

New Features and Enhancements in CA ERwin Mart Server

This section documents the new features and enhancements of CA ERwin Mart Server Release 9.2.0.

Database Client for Oracle and Sybase Marts

In the release 9.1.0 Mart, you installed the database client on the Mart server for Oracle and Sybase Marts. The database client was required when the Mart server and the Mart database were installed on different computers. Now, a Mart Server can connect to an Oracle or a Sybase Mart on a different computer, without the database client.

Chapter 2: Install and Configure an Oracle Mart

This section describes how you can install and configure a Mart on an Oracle database.

This section contains the following topics:

[How to Install and Configure an Oracle Mart](#) (see page 12)

[How to Upgrade a Mart from r9.0.0 to r9.2.0](#) (see page 31)

[Change the Mart Database Server](#) (see page 38)

[Troubleshooting](#) (see page 38)

How to Install and Configure an Oracle Mart

In the previous versions, CA ERwin Data Modeler connected to the Mart server directly. Now, CA ERwin Data Modeler connects to the Mart server through a web server.

Note: The procedure to upgrade a Mart from r9.0.0 to r9.2.0 is different from the procedure to upgrade from r7.3 through r8.2.7 to r9.2.0. If your Mart version is r9.0.0, use the *How to Upgrade a Mart from r9.0.0 to r9.2.0* procedure to upgrade your Mart to r9.2.0. The models that are created in r9.0.0 are upgraded when a user connects to the r9.2.0 Mart and opens the models. If your Mart version is r7.3 through r8.2.7, use the *Installing and Configuring the Mart* procedure and install the r9.2.0 Mart. After installing the Mart, use the Upgrade Mart utility to upgrade the Mart models from r7.3 through r8.2.7 to r9.2.0.

The Mart comprises the following components:

Database

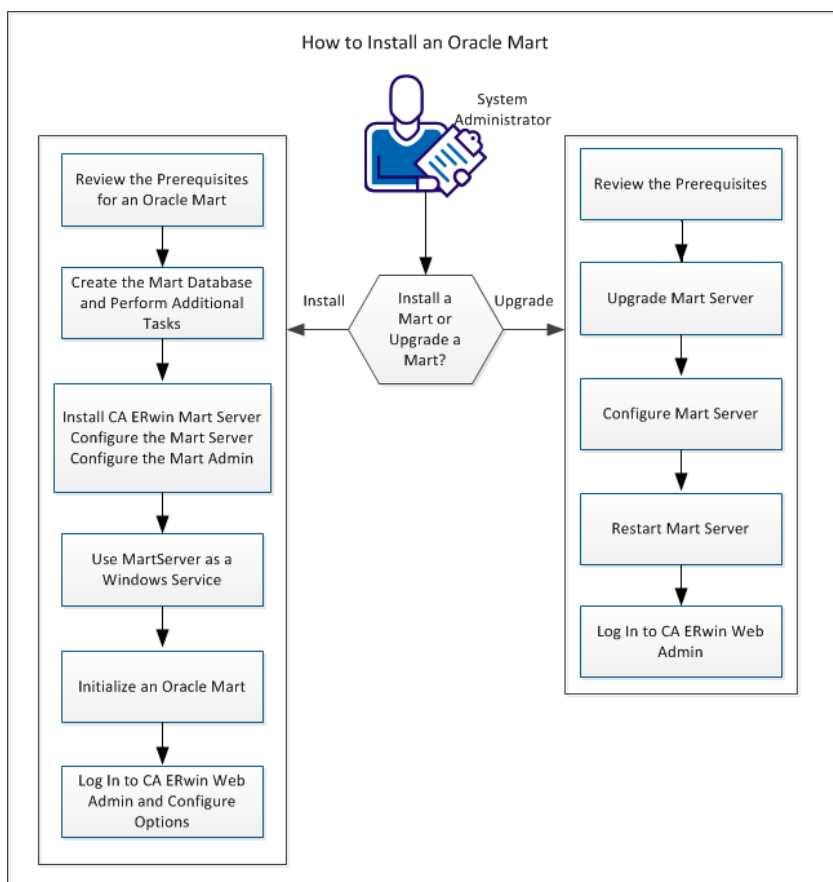
Stores the user data for the Workgroup Edition. You can use an Oracle 10g or 11g database for the Mart database. You must use a new database and not an existing database that was created for an older version of the data modeling tool.

Applications

Includes a web-based component named CA ERwin Mart Administrator that helps you manage the Mart through a web console.

Web server

Hosts CA ERwin Mart Administrator. You can use a web server of your choice. If you have not installed a web server, use the ERwin Mart Server option and install Tomcat.



Complete the following steps in the same order to install and configure the Mart:

1. [Review the prerequisites of an Oracle Mart.](#) (see page 15)
2. Create the Mart Database and perform the additional tasks.
3. [Install CA ERwin Mart Server.](#) (see page 22)
4. Use MartServer as a Windows Service.
5. [Initialize an Oracle Mart.](#) (see page 28)
6. Log in to CA ERwin Mart Administrator and configure settings.

Complete the following Web steps to upgrade a Mart from r9.0 to r9.1:

1. [Review the Prerequisites](#) (see page 32)
2. [Upgrade the Mart Server](#) (see page 33)
3. [Configure the Mart Server](#) (see page 33)
4. [Restart the Mart Server](#) (see page 36)
5. [Log In to CA ERwin Web Admin](#) (see page 37)

Mart Architecture

In the previous versions, CA ERwin Data Modeler connected to the Mart server directly. Now, the application connects to the Mart server through a web server. The web server includes a web-based administration console—CA ERwin Mart Administrator. If you are using the Workgroup Edition, you must install and configure CA ERwin Mart Administrator.

The Mart comprises the following components:

Database

Stores the user data for the Workgroup Edition. You can use an Oracle 10g or 11g database for the Mart database. You must use a new database and not an existing database that was created for an older version of the data modeling tool.

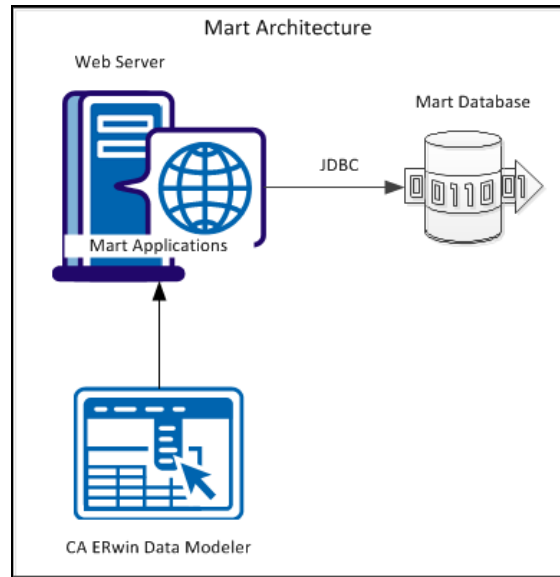
Applications

Includes a web-based component named CA ERwin Mart Administrator that helps you manage the Mart through a web console.

Web server

Hosts CA ERwin Mart Administrator. You can use a web server of your choice. If you have not installed a web server, use the ERwin Mart Server option and install Tomcat.

The following diagram shows the new architecture:



The new architecture has the following benefits:

- **Separate logical and physical users:** In the previous versions, Mart (or Model Manager) users required database level privileges to access the Mart functionality. The Mart database administrators added or deleted users in the Mart database. This approach is changed now. The logical users are separated from physical users, so Mart Administrators can create the Mart users without creating the corresponding database users.
- **Authentication through Active Directory services:** Earlier, if you wanted to provide access to a user group, you added each user individually. Now, because of the new architecture, you can use the Active Directory services and can provide access to the group. Anyone who is part of the group gets access.
- **Mart administration outside CA ERwin Data Modeler:** In the previous versions, Mart Administrators used CA ERwin Data Modeler for administrative activities such as managing permissions. This required non-modelers to know how to use CA ERwin Data Modeler. In the new architecture, the administration component is built on a separate layer on top of CA ERwin Data Modeler and is hosted on a web server. Mart Administrators can access CA ERwin Web Admin from any computer and can perform administrative activities through a web console.

Install a Mart or Upgrade a Mart?

Use the following guidelines to determine if you must install a Mart or upgrade a Mart:

- If you have purchased CA ERwin Data Modeler r9.2.0 Workgroup Edition, then install the r9.2.0 Mart.
- If you have an existing r9.0.0 Mart, then upgrade the Mart from r9.0.0 to r9.2.0.

Review the Prerequisites for an Oracle Mart

Before you install the Mart components, help ensure that the minimum system requirements that are outlined in this topic are met.

System requirements for Mart server

Hardware requirements (based on physical hardware performance, not a virtual environment):

- 2 GHZ or higher dual core processor
- 4 GB RAM (8 GB or more for large marts)
- 4 GB of disk space or more as required to support your specific mart

Operating system:

- Microsoft Windows Vista
- Microsoft Windows 2008 Server SP2
- Microsoft Windows 2003 Server SP2
- Microsoft Windows XP SP3
- Microsoft Windows 7

Notes:

- CA ERwin Data Modeler has only been certified on the 32-bit versions of the Windows operating systems described in the preceding list. CA ERwin Data Modeler is a 32-bit application. You may experience problems running CA ERwin Data Modeler on a 64-bit operating system.
- CA ERwin Data Modeler is compatible with Microsoft Windows 8 Release Preview. You may experience problems with shortcuts and CA ERwin DM third-party components.
- Microsoft .NET Framework 3.5 or higher
- All current Microsoft Windows critical updates are applied

Database:

- The Mart Server can use a standalone or can share an existing database server for an Oracle 10g or 11g database.
- To create the Mart, you must be the database schema owner user and you must have the DBA role in the target database on the Oracle server.
- (Optional) You have modified the following parameters in the initialization file (InitSID.ora):

```
Remote_OS_Authent=""  
OS_Authent_Prefix=TRUE
```

CA ERwin Mart Administrator web client:

- Supported browsers:
 - Microsoft Internet Explorer 8[®] or newer
 - Mozilla Firefox[®] v.9.0 or newer
 - Google Chrome 14 or newer
 - Apple Safari 5 or newer
- Adobe Flash plug-in version 8 or newer for the respective browser

Other requirements

Help ensure that the following additional requirements are met:

- If you want to use Microsoft IIS as the web server, you have configured it.
- The DBMS is installed and prepared for creating the Mart Database.
- The Mart database is created. At least one user with administrator privileges is present. You have run the initial queries on the Oracle database. For more information about the initial queries, see the Implementation Guide.
- If you want to add Windows Group users as Mart users, you have the Active Directory Server details.

Note: You can add Windows Group users as normal Mart users, but not the Mart administrator. A Mart administrator must be a database-authenticated user.

Important disclaimer notice on all requirements

1. The requirements that are mentioned previously define the minimum requirements which permit the application to run with reasonable performance based on a small business use case scenario. The actual requirements for an enterprise-wide use case based on larger models and configurations require significantly greater resources to obtain acceptable performance.
2. These requirements are based on actual physical hardware (no virtual environment) and the following assumptions:
 - Minimal to no network overhead (both the database and application servers are locally installed)
 - Vendor's default install of the current version of their software (with all current service or fix packs)
 - No other applications sharing the defined hardware configuration (for example, a "clean" machine)

Any other hardware/software configurations are acceptable as long as they provide the same (or better) performance characteristics identified.

Create the Mart Database and Perform the Additional Tasks

Perform the following setup tasks in your DBMS environment before you can install and use the software:

1. Install the DBMS on the server where you plan to store the mart.

Help ensure that you can create tables, indexes, stored procedures, and public synonyms. For more information about memory and disk space requirements, see the system requirements for each DBMS (Microsoft SQL Server, Sybase, and Oracle).

2. Create the mart.

Use the DBMS features to create or identify the required storage objects and the mart. The specific requirements vary depending on your DBMS type.

Note: To create, update, or delete a mart in CA ERwin Data Modeler Workgroup Edition, you must be the database schema owner and you must have the DBA role.

Additional Tasks

The DBA and the system administrator responsible for installing the software on an Oracle database management system performs these tasks.

Use graphical tools or SQL *Plus (all versions), SQL*DBA, or the Oracle Enterprise Management Console to perform these tasks. Some SQL commands are included where appropriate. The Data file paths, data file sizes, role names, and user names are included as examples only.

1. Check the SYSTEM tablespace.

The installation creates several stored procedures. All triggers, stored procedures, and packages are kept in the Oracle SYSTEM tablespace. The standard size of the SYSTEM tablespace assumes that you are not using procedural options, so the SYSTEM tablespace must be often expanded. If other Oracle applications are not using procedural code, then expand the SYSTEM tablespace to 32 MB. If other Oracle applications also use procedural code, expand the SYSTEM tablespace to at least 32 MB.

2. Check the Rollback Segment tablespace.

If your instance uses UNDO tablespace, do not create rollback segments.

Significant rollback space is required for installing and use. The rollback segments must be in their own separate tablespace and each have at least 16 MB of available space. There must be one rollback segment for every four concurrent users, with a maximum of 50 rollback segments. The available space must scale upward with increasing numbers of rollback segments. Finally, the rollback segment optimal parameter must be set to control rollback segment growth and space consumption.

Note: For Steps 3, 4, and 5, use the Dictionary-managed tablespaces.

3. Create a data tablespace of at least 32 MB.

For example:

```
CREATE TABLESPACE MyMart  
DATAFILE '/db01/oracle/rdbms9i/data/mymart.ora' SIZE 100M;
```

Or For Locally Managed extents:

```
CREATE TABLESPACE Mymart  
DATAFILE '/db01/oracle/rdbms9i/data/mymart.ora' SIZE 100M  
EXTENT MANAGEMENT LOCAL SEGMENT SPACE MANAGEMENT AUTO;
```

4. Create an index tablespace of at least 32 MB.

For example:

```
CREATE TABLESPACE MMARTINDEX  
DATAFILE '/db02/oracle/rdbms9i/data/mmartindex.ora' SIZE 75M;
```

Or For Locally Managed extents:

```
CREATE TABLESPACE MMARTINDEX  
DATAFILE '/db02/oracle/rdbms9i/data/mmartindex.ora' SIZE 75M  
EXTENT MANAGEMENT LOCAL SEGMENT SPACE MANAGEMENT AUTO;
```

5. Create a temporary tablespace.

For example:

```
CREATE TEMPORARY TABLESPACE MMTEMP TEMPFILE '/db03/oracle/rdbms9i/data/mmarttemp.ora'  
SIZE 50M;
```

Or For Locally Managed extents:

```
CREATE TEMPORARY TABLESPACE MMTEMP TEMPFILE '/db03/oracle/rdbms9i/data/mmarttemp.ora'  
SIZE 50M
```

```
EXTENT MANAGEMENT LOCAL UNIFORM SIZE 1M;
```

Note: For more details about syntax and options regarding tablespace creation, see the appropriate Oracle documentation.

6. Create an Oracle user with DBA privileges for use by the CA ERwin Data Modeler Workgroup Edition Installer or designated schema owner.

Assign the data tablespace to this user as the default tablespace, and the temporary tablespace as the temporary tablespace to the user.

For example:

```
CREATE USER STEVE IDENTIFIED BY STEVE
DEFAULT TABLESPACE MyMart
TEMPORARY TABLESPACE MMTEMP
QUOTA UNLIMITED ON MyMart
QUOTA UNLIMITED ON MMARTINDEX;
```

7. Create the CA ERwin Data Modeler Workgroup Edition Installer role.

The following example is the role that the Oracle user requires to install CA ERwin Data Modeler Workgroup Edition.

```
CREATE ROLE MMINSTALL;
```

8. Grant the Oracle privileges to the Installer role.

The following example shows the Oracle privileges that the CA ERwin Data Modeler Workgroup Edition Installer must install on Oracle. For the last command, log in as sys with the sysdba role in the user-name or the command will fail.

```
grant create sequence to MMINSTALL;
grant create table to MMINSTALL;
grant create view to MMINSTALL;
grant drop public synonym to MMINSTALL;
grant create public synonym to MMINSTALL;
grant create procedure to MMINSTALL;
grant select on dba_data_files to MMINSTALL;
```

9. Create the CA ERwin Data Modeler Workgroup Edition User role.

For example:

```
CREATE ROLE MMUSER;
```

When you select this role as the CA ERwin Data Modeler Workgroup Edition User role during Step 4 of the installation procedure, the Setup program generates grant statements. These statements grant the object level privileges to this role.

10. Grant the create session Oracle privilege to the User role.

For example:

```
grant create session to MMUSER;
```

Note: To use the database, an Oracle user needs only the create session privilege.

- Grant the CA ERwin Data Modeler Workgroup Edition User role to the Installer role.

For example:

```
grant MMUSER to MMINSTALL;
```

- Select the CA ERwin Data Modeler Workgroup Edition tablespaces and User role.

When prompted for tablespace and role information, select the Workgroup Edition data tablespace, the Workgroup Edition index tablespace, and the Workgroup Edition User role (the role created in Step 9).

Oracle SQL Commands

If a graphical DBMS access tool is not available, you can use Oracle SQL commands through SQL*DBA or SQL*Plus.

Example: Create a tablespace using the CREATE TABLESPACE command

```
CREATE TABLESPACE mm_data /* The tablespace name. */
DATAFILE 'C:\ORANT\DATABASE\mmdata.dat' /* The data file name. */
SIZE integer_value K or M or G /* The data file size */
DEFAULT STORAGE ( /* The default storage parameters */
  INITIAL integer_value K or M or G /* The initial extent size */
  NEXT integer_value K or M or G /* The next extent size */
  PCTINCREASE integer_value /* The percent to grow extents */
  MINEXTENTS integer_value /* The minimum number of extents */
  MAXEXTENTS integer_value /* The maximum number of extents */
);
```

Example: Create an Oracle user using the CREATE USER command

```
CREATE USER mm_user_1 /* The user id name */
IDENTIFIED BY password /* The user password */
DEAFULT TABLESPACE tablespace_name /* The user's default tablespace */
TEMPORARY TABLESPACE tablespace_name /* The user's temporary tablespace */
QUOTA unlimited_or_integer_K_M_G ON tablespace_name /* The user's quota on a tablespace */
;
```

Example: Grant user privileges using the GRANT command

```
GRANT role_or_privilege_name
TO user_or_role
;
```

Install CA ERwin Mart Server

The Mart Server and Mart Admin war files are deployed on a Web server. You can either use an existing web server, or install the web server through the CA ERwin MartServer Installation Wizard. You must install CA ERwin Mart Server and configure it regardless of whether you use Mart Server as a Windows service.

Note: The procedure to upgrade a Mart from r9.0.0 to r9.2.0 is different from the procedure to upgrade from r7.3 through r8.2.7 to r9.2.0. If your Mart version is r9.0.0, use the *How to Upgrade a Mart from r9.0.0 to r9.2.0* procedure to upgrade your Mart to r9.2.0. The models that are created in r9.0.0 are upgraded when a user connects to the r9.2.0 Mart and opens the models. If your Mart version is r7.3 through r8.2.7, use the *Installing and Configuring the Mart* procedure and install the r9.2.0 Mart. After installing the Mart, use the Upgrade Mart utility to upgrade the Mart models from r7.3 through r8.2.7 to r9.2.0.

Follow these steps:

1. Do one of the following tasks:
 - Insert the installation DVD and select Mart Server Installation.
 - Download the CAEDMMS92.exe file from the online CA Technologies [product page](#) and run it.

The CA ERwin MartServer Installation Wizard appears.

2. Go through the wizard steps to install CA ERwin Mart Server.

Depending on the options you select, CA ERwin Mart Server and/or Java Runtime Environment (JRE) and Tomcat are installed.

Note: If Java (any version) is already available in the computer and the environment variable JRE_HOME is set, the installer overwrites JRE_HOME with the new Java path. The JRE version that is shipped with the installer is 1.7. If a Tomcat web server is already installed in the computer and the environment variable CATALINA_HOME is set, the installer replaces CATALINA_HOME with the new path.

3. From the Windows Start menu, click All Programs, CA, ERwin, ERwin Mart Server r9, Configure MartServer.

The CA ERwin Mart Configuration dialog appears.

Configure the CA ERwin Mart Server

1. Complete the following fields in the Mart Server tab:

Database Type

Specifies the database server type.

Port No.

Specifies the port number of the database server.

Server Name

Specifies the name of the database server where you have installed the Mart database. For example, suppose that you are using SQL Server 2008 as the Mart database. Enter the name of the computer where SQL Server 2008 is installed.

Instance Name

Specifies the name of the database instance.

Database Name

Specifies the name of the Mart database.

Note: If you are installing the Mart for the first time, use a new database. Do not use an existing database that was created for r7.3 through r8.2.7 Mart. If you are upgrading the Mart from r9.0.0 to r9.2.0, use the r9.0.0 Mart database.

User Name

Specifies the user name to connect to the Mart database. Enter the name of a user that is authenticated by the Mart database.

Note: A Windows authenticated user account cannot be used to initialize the Mart.

Password

Specifies the password to connect to the Mart database.

Note: The following fields--Domain Controller Name, Domain/User Name, and Password are required only if you are using the Active Directory authentication.

Domain Controller Name

Specifies the fully qualified name of the Active Directory Server (Domain Controller). Enter the name in the following format:

LDAP://server/distinguished-name

Example: ldap://mktgna:3268/dc=abc, dc=com

Here, *mktgna* is the server name. You can provide either the name of the server or the IP address. 3268 is the port number to which the server listens.

dc=abc, dc=com is the distinguished-name. The distinguished name is the full path of the object.

Note: If you do not know the Domain Controller Name, use the *Nltest* command or talk to your System Administrator.

Domain/User Name

Specifies the domain name and user name in the <domain name>/<user name> format.

Password

Specifies the password of the domain user.

Configure CA ERwin Mart Administrator

1. Enter the following information in the Mart Administrator tab:

Server Name

Specifies the name of the computer where the Web Server is present. For example, if you are using Tomcat, enter the name of the computer where Tomcat is installed.

Default: localhost

Port Number

Specifies the port number on which the Web Server is running.

Default: 18170

Application Name

Specifies the application name with which the Web Server is identified.

Default: MartServer

Transport Layer Security

Specifies if you want to connect to the Mart through a secured connection (SSL). Select this check box if you have implemented SSL.

Hosting Server

Specifies that you want to use the IIS web server to connect to the Mart. Select this check box only if you have configured IIS.

2. Click Configure.

The CA ERwin Mart Administrator and the Mart Server are configured.

More information:

[Configure IIS Web Server](#) (see page 114)

[Implement SSL for IIS](#) (see page 116)

Enable SSL for Tomcat

SSL enables you to access the Mart through a secured connection. You can enable SSL for Tomcat--the default web server, regardless of whether you are installing the Mart for the first time, or you are upgrading it from CA ERwin Data Modeler version 9.0.

Follow these steps:

1. If the Mart Server service is running, stop it. From the Windows Start menu, click All Programs, CA, ERwin, ERwin Mart Server r9, Stop MartServer Service to stop the web server.
2. From the Windows Start menu, click All Programs, CA, ERwin, ERwin Mart Server r9, Enable SSL for Tomcat Webserver.

SSL is enabled for Tomcat and a security certificate is created. You must install this security certificate on all the computers from where you want to access the Mart.

3. From the Windows Start menu, click All Programs, CA, ERwin, ERwin Mart Server r9, Configure MartServer.

The CA ERwin Mart Configuration dialog appears.

4. Go to the Mart Administrator tab and select the Transport Layer Security check box.
5. From the Windows Start menu, click All Programs, CA, ERwin, ERwin Mart Server r9, Start Mart Server Service.
6. From the Windows Start menu, click All Programs, CA, ERwin, ERwin Mart Server r9, CA ERwin Mart Administrator.

The CA ERwin Mart Administrator home page appears and displays HTTPS in the address bar. If a certificate error appears, click Proceed Anyway to begin the session.

Important! If you want to connect to an SSL enabled Mart through API or the Mart Upgrade utility, you must first install the security certificate on the corresponding computer. Install the certificate through the data modeling tool. If you do not install the security certificate, the Mart Upgrade utility and the API will not be able to connect to the SSL enabled Mart.

Disable SSL and Access the Mart Through a Normal Connection

You can disable SSL at any time and access the Mart through a normal connection.

Follow these steps:

1. If the Mart Server Service is running, stop it. From the Windows Start menu, click All Programs, CA, ERwin, ERwin Mart Server r9, Stop Mart Server Service.
2. From the Windows Start menu, click All Programs, CA, ERwin, ERwin Mart Server r9, Disable SSL.
3. From the Windows Start menu, click All Programs, CA, ERwin, ERwin Mart Server r9, Configure MartServer.

The CA ERwin Mart Configuration dialog appears.

4. Go to the Mart Administrator tab and clear the Transport Layer Security check box.
5. From the Windows Start menu, click All Programs, CA, ERwin, ERwin Mart Server r9, Start Mart Server Service.
6. From the Windows Start menu, click All Programs, CA, ERwin, ERwin Mart Server r9, CA ERwin Mart Administrator.

The CA ERwin Mart Administrator home page appears and displays HTTP in the address bar.

Use Mart Server as a Windows Service

The current version of the Mart provides two ways to start the web server that hosts Mart Server:

- Start the web server manually.
- Use a Windows service to start the web server.

For example, if you have used Tomcat as the web server to host Mart Server, you can start Tomcat in two ways:

- Start Tomcat through the startup.bat file or through a shortcut to this file.
- Use a Windows service to start Tomcat.

The benefits of using a Windows service to start a web server are as follows:

- Any user with administrative privileges on a computer can start the Windows service, whereas, only designated users can start a web server manually.
- A Windows service runs regardless of whether a user has logged in. A manually-started web server shuts down when the user who started it logs out.

Follow these steps:

1. From the Windows Start menu, click All Programs, CA, ERwin, ERwin Mart Server r9, Create MartServer Service to create the MartServer Windows service.
Creating the service is a one-time task. After the service is created, you only have to start and stop the service.
2. From the Windows Start menu, click All Programs, CA, ERwin, ERwin Mart Server r9, Start MartServer Service to start the web server.

Initialize an Oracle Mart

When you access the Mart database through CA ERwin Mart Administrator for the first time, you must initialize the database.

Note: Before you proceed, verify that you have installed a DBMS, created the Mart database and run the initial queries. If the Mart is already initialized, the Login page appears.

When you open CA ERwin Mart Administrator for the first time, the Initialize Mart web page appears.

Follow these steps:

1. If you are using MartServer as a Windows service, help ensure that the service is started. If not, from the Windows Start menu, click All Programs, CA, ERwin, ERwin Mart Server r9, Start Mart Server to start the Mart Server.

A Windows command prompt window appears and indicates when the server starts.

2. From the Windows Start menu, click All Programs, CA, ERwin, ERwin Mart Server r9, CA ERwin Mart Administrator.

CA ERwin Mart Administrator opens in your default browser.

3. Complete the following fields:

Username

Defines the user name with which you want to access the Mart. Enter the name of a user that is authenticated by the Mart database.

Note: A Windows authenticated user cannot initialize the Mart.

Password

Defines the password for the user name.

Confirm Password

Confirms the password that you entered in the previous field.

Email Address

Defines the email address for the user account that you are creating.

Mart Role

Defines the role of the user for the Mart.

Table Tablespace

Defines the table tablespace in which the Mart tables are created.

Index Tablespace

Defines the index tablespace in which the Mart indexes are created.

4. Click Initialize.

The user name is added as an administrator of Mart, Mart is initialized, and the Login web page appears. Initializing is a one-time task. After Mart is initialized, the user who initialized must log in first. Later, any other user who wants to use CA ERwin Mart Administrator can log in.

Note: The user name that is entered here is an application level user and not a database user. Remember the password that you have entered here, because without the password you cannot log in to CA ERwin Mart Administrator for the first time.

Log In to CA ERwin Mart Administrator and Configure Settings

After the Mart is initialized, the user who initialized must log in first. When you log in to Mart for the first time, configure it per the requirements of your organization. You can configure the following settings:

- Default profile for the model creator
- Use default password
- Email notification

Follow these steps:

1. From the Windows Start menu, click All Programs, CA, ERwin, ERwin Mart Server r9, CA ERwin Mart Administrator.

The CA ERwin Mart Administrator home page appears. If you have implemented SSL, HTTPS appears in the address bar.

2. Use the credentials with which you initialized the Mart and log in.
3. Click Settings.
4. Complete the following fields:

Default profile for model creator

Specifies the profile that is assigned to a user on a model. This profile is assigned whenever a user creates a model and saves it to Mart for the first time. The user inherits the permissions of the default profile selected here on the model that is saved. For example, suppose that User1 is assigned with Modeler profile and the System Administrator selects Architect as the default profile for model creator. If User1 creates Model1 and saves it to Mart, for Model1, User1 inherits the permissions of Architect. Now, suppose that the System Administrator selects Viewer as the default profile for model creator, and suppose that User1 creates Model2 and saves it to Mart. For Model2, User1 inherits the permissions of Viewer.

Use Default Password

Specifies the default password that you want to use for new users and for resetting passwords, in the absence of an SMTP server for emails.

Note: Select this option only if you do not have an SMTP server that is configured for emails.

SMTP host name

Specifies the name of the SMTP host. Enter the name in the mail.domain.com format. Notification emails are sent from this server.

Port number

Specifies the port number of the SMTP server. The default port number is 25. If your company is using an alternate port number for the mail server, specify that port number.

Authenticate

Specifies whether transactions with the SMTP server are authenticated. Select the check box to authenticate.

User name

Specifies the user name to authenticate the SMTP server. Select the Authenticate check box to enable authentication.

Password

Specifies the password to authenticate the SMTP server. Select the Authenticate check box to enable authentication.

Administrator email

Specifies the email ID of the Mart administrator. Notifications to Mart users are sent from this ID.

No-reply email from

Specifies the email ID from which administrative emails such as the password reset email are sent.

5. Click Save.

Mart options are configured.

You have installed and configured CA ERwin DM release 9.2.0 Mart.

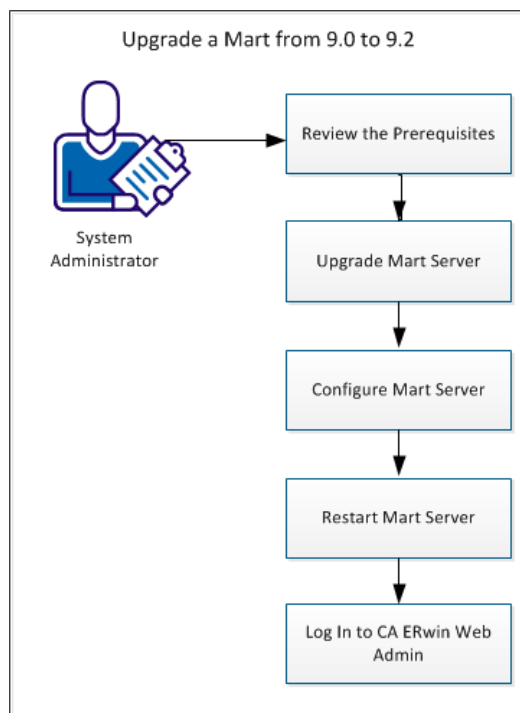
How to Upgrade a Mart from r9.0.0 to r9.2.0

If you are using CA ERwin Data Modeler version 9.0.0 Mart and you want to upgrade it to release 9.2.0, upgrade the Mart Server and the Mart database. The Mart server program is upgraded, so you must implement the upgraded software.

Note: The procedure to upgrade a Mart from r9.0.0 to r9.2.0 is different from the procedure to upgrade from r7.3 through r8.2.7 to r9.2.0. If your Mart version is r9.0.0, use the *How to Upgrade a Mart from r9.0.0 to r9.2.0* procedure to upgrade your Mart to r9.2.0. The models that are created in r9.0.0 are upgraded when a user connects to the r9.2.0 Mart and opens the models. If your Mart version is r7.3 through r8.2.7, use the *Installing and Configuring the Mart* procedure and install the r9.2.0 Mart. After installing the Mart, use the Upgrade Mart utility to upgrade the Mart models from r7.3 through r8.2.7 to r9.2.0.

Important! The current Mart is designed to work with only the current version of CA ERwin Data Modeler. If you try to connect the current Mart with CA ERwin Data Modeler r9.0.0, it may corrupt the Mart and cause unexpected behavior.

The following diagram illustrates how System Administrators can upgrade a Mart from r9.0.0 to r9.2.0:



Complete the following tasks to upgrade an existing r9.0.0 Mart to r9.2.0:

1. [Review the prerequisites.](#) (see page 32)
2. [Upgrade the Mart Server](#) (see page 33).
3. [Configure the Mart Server](#) (see page 33).
4. [Restart the Mart Server service.](#) (see page 36)
5. [Log In to CA ERwin Web Admin](#) (see page 37).

Review the Prerequisites

Review the following prerequisites before you start the upgrade process:

If the Mart database is an Oracle database, the default tablespaces that were used for initializing the r9.0.0 Mart are available for the r9.2.0 Mart.

Upgrade the Mart Server

If you are upgrading a Mart from r9.0.0 to r9.2.0, upgrade the Mart Server.

Note: The procedure to upgrade a Mart from r9.0.0 to r9.2.0 is different from the procedure to upgrade from r7.3 through r8.2.7 to r9.2.0. If your Mart version is r9.0.0, use the *How to Upgrade a Mart from r9.0.0 to r9.2.0* procedure to upgrade your Mart to r9.2.0. The models that are created in r9.0.0 are upgraded when a user connects to the r9.2.0 Mart and opens the models. If your Mart version is r7.3 through r8.2.7, use the *Installing and Configuring the Mart* procedure and install the r9.2.0 Mart. After installing the Mart, use the Upgrade Mart utility to upgrade the Mart models from r7.3 through r8.2.7 to r9.2.0.

Follow these steps:

1. Download and run the CAEDMMS92.exe file from the CA Support site.
The CA ERwin Mart Server r9.2.0 Install Shield Wizard dialog appears.
2. Follow the wizard.
The Mart Server is upgraded.
3. Restart your computer.

Configure the Mart Server

To connect to the r9.2.0 Mart, you must configure the Mart Server. Use the same database that you have used for the r9.0.0 Mart.

Important! The current Mart is designed to work with only the current version of CA ERwin Data Modeler. If you try to connect the current Mart with CA ERwin Data Modeler r9.0.0, it may corrupt the Mart and cause unexpected behavior.

Follow these steps:

1. From the Windows Start menu, click All Programs, CA, ERwin, ERwin Mart Server r9, Configure MartServer.

The CA ERwin Mart Configuration dialog appears.

Configure the CA ERwin Mart Server

1. Complete the following fields in the Mart Server tab:

Database Type

Specifies the database server type.

Port No.

Specifies the port number of the database server.

Server Name

Specifies the name of the database server where you have installed the Mart database. For example, suppose that you are using SQL Server 2008 as the Mart database. Enter the name of the computer where SQL Server 2008 is installed.

Instance Name

Specifies the name of the database instance.

Database Name

Specifies the name of the Mart database.

Note: If you are installing the Mart for the first time, use a new database. Do not use an existing database that was created for r7.3 through r8.2.7 Mart. If you are upgrading the Mart from r9.0.0 to r9.2.0, use the r9.0.0 Mart database.

User Name

Specifies the user name to connect to the Mart database. Enter the name of a user that is authenticated by the Mart database.

Note: A Windows authenticated user account cannot be used to initialize the Mart.

Password

Specifies the password to connect to the Mart database.

Note: The following fields--Domain Controller Name, Domain/User Name, and Password are required only if you are using the Active Directory authentication.

Domain Controller Name

Specifies the fully qualified name of the Active Directory Server (Domain Controller). Enter the name in the following format:

LDAP://server/distinguished-name

Example: ldap://mktgna:3268/dc=abc, dc=com

Here, *mktgna* is the server name. You can provide either the name of the server or the IP address. 3268 is the port number to which the server listens.

dc=abc, dc=com is the distinguished-name. The distinguished name is the full path of the object.

Note: If you do not know the Domain Controller Name, use the *Nltest* command or talk to your System Administrator.

Domain/User Name

Specifies the domain name and user name in the <domain name>/<user name> format.

Password

Specifies the password of the domain user.

Configure CA ERwin Mart Administrator

1. Enter the following information in the Mart Administrator tab:

Server Name

Specifies the name of the computer where the Web Server is present. For example, if you are using Tomcat, enter the name of the computer where Tomcat is installed.

Default: localhost

Port Number

Specifies the port number on which the Web Server is running.

Default: 18170

Application Name

Specifies the application name with which the Web Server is identified.

Default: MartServer

Transport Layer Security

Specifies if you want to connect to the Mart through a secured connection (SSL). Select this check box if you have implemented SSL.

Hosting Server

Specifies that you want to use the IIS web server to connect to the Mart. Select this check box only if you have configured IIS.

2. Click Configure.

The CA ERwin Mart Administrator and the Mart Server are configured.

Restart the Mart Server Service

When you modify the details of the Mart Server and Mart Administration programs, restart the Mart Server service.

Follow these steps:

1. From the Windows Start menu, click All Programs, CA, ERwin, ERwin Mart Server r9, Stop MartServer Service to stop the Mart Server service.
2. From the Windows Start menu, click All Programs, CA, ERwin, ERwin Mart Server r9, Start MartServer Service to start the Mart Server service.

Log In to CA ERwin Mart Administrator

Log in to CA ERwin Mart Administrator to verify if you have successfully upgraded the Mart Server from r9.0.0 to r9.2.0.

Follow these steps:

1. From the Windows Start menu, click All Programs, CA, ERwin, ERwin Mart Server r9, CA ERwin Mart Administrator.

The CA ERwin Mart Administrator log in page appears. If you have implemented SSL, HTTPS appears in the address bar.

2. Use the credentials with which you initialized the Mart and log in.

The CA ERwin Mart Administrator home page appears.

The models that are created in r9.0.0 are upgraded when a user connects to the r9.2.0 Mart and opens the models.

Change the Mart Database Server

Sometimes, you may change the server on which the Mart database is installed, or you may restore the Mart database with a new name. When there is a change the server name or database name, reconfigure the MartServer.

Follow these steps:

1. Back up your Mart database.
2. Restore the database on the designated server.
3. If you use the same computer for Mart Server and restore the database in a different name, include the new database name in the CA ERwin Mart Configuration dialog.

From the Windows Start menu, open the CA ERwin Mart Configuration dialog. In the Mart Server tab, Database Name field, enter the new name with which the database is restored. Enter the current user name and password to access the database. If wrong information is provided here, you may be able to install the Mart, but you cannot log in and cannot use it.

4. If you use a different computer for Mart Server and restore the database in the same name, install the Mart Server on the new computer.

Use the Install CA ERwin Mart Server procedure and install the Mart Server. In the Mart Server tab, Server Name field, enter the name of the new server where the database is restored. Enter the current user name and password to access the database. If wrong information is provided here, you may be able to install the Mart, but you cannot log in and cannot use it.

5. Stop the MartServer service and start it again.
6. From the Windows Start menu, click All Programs, CA, ERwin, ERwin Mart Server r9, CA ERwin Mart Administrator.

Enter the credentials of the Mart administrator and log in.

Troubleshooting

This section explains the errors that you can encounter while installing and configuring Mart, and how you can troubleshoot them.

Note: The Mart Server log files are available in the following location:

Windows XP: {user.home}/Local Settings/Application Data/CA/ERwin Mart Server/logs/application.log

Windows 7: {user.home}/AppData/Local/CA/ERwin Mart Server/logs/application.log

Port out of range

Symptom:

Whenever I connect to the web server, I get the following error message:

```
java.lang.IllegalArgumentException: port out of range 80821.
```

Solution:

Type the correct port number in the Configure CA ERwin Mart Administrator's Server dialog and then restart your web server.

Call failed on the server

Symptom:

When I try to connect to the Mart server, I get the following error:

```
500 The call failed on the server; see server log for details
```

Solution:

The probable reasons for this error could be one of the following reasons:

- The server name is not correct.
- The application name is not correct. By default, the application name is MartServer and it is case-sensitive.

Type the correct server name and application name in the CA ERwin Mart Administrator's Server dialog and the Configure MartServer Details dialog. Restart the web server.

Application Internal Error

Symptom:

When I try to connect to the database, I get the following error:

Application Internal Error

Solution

You get this error when the MartServer application is unable to connect to the required database. The following reasons are probable for this error:

- The database details that are provided in the Configure MartServer Details dialog are incorrect.
- The username and the password for the database are incorrect.
- The database is not present.
- The port number for the database is incorrect.
- The network is down.

Ensure that you enter the correct details of your database in the Mart Server tab of the CA ERwin Mart Configuration dialog.

ORA-12514 TNS listener does not currently know of service requested in connect descriptor

Symptom:

When I try to open the CA ERwin Mart Administrator page, I get the Application Internal Error. The Tomcat windows shows the following error message:

ORA-12514, TNS:listener does not currently know of service requested in connect descriptor

Solution:

Use a fully qualified instance name when starting the Mart Server.

Mart already exists. Specify another database name

Symptom:

When I try to connect to the Mart, I get the following error message:

An earlier mart is already present in the database you are trying to initialize. This process can not be continued. Please specify another database name to continue.

Solution:

You get this error when you connect to an old Mart that you have used for CA ERwin DM Release 7.x, 8.x, or version 9.0 pre-Beta.

Create a database and provide its details in the Configure MartServer Details dialog.

Initialize page is not loading in Internet Explorer

Symptom:

When I type the URL to initialize my Mart in Internet Explorer, the Initialize Mart page is taking a long time to load.

Solution:

The Initialize Mart page does not load because the Active Scripting option in Internet Explorer is disabled.

To enable Active Scripting, follow these steps:

1. In Internet Explorer, click Tools, Internet Options.
2. In the Security tab, click the Custom Level button.
The Security Settings – Local Intranet Zone window opens.
3. From the list of options, locate Scripting, Active Scripting, and select Enable. Click OK.
4. Restart Internet Explorer and enter the URL to initialize Mart.

The Mart Initialize page opens.

The Tomcat server is not starting properly. The Configure button is disabled.

Symptom:

My administrator has given me the Administrator rights and when I start the Tomcat server, I get a series of errors. Also, I cannot click the Configure button in the configuration dialog because it is disabled.

Solution:

Right-click Start Server, and click Run as Administrator.

The Tomcat server starts without any error, and the configuration button is enabled.

A connection with the server could not be established

Symptom:

When I try to connect to the web server from CA ERwin Data Modeler, I get the following error message:

A connection with the server could not be established

Solution:

Verify that you have provided the correct port number and then reconnect to the web server.

The server name or address could not be resolved

Symptom:

When I try to connect to the web server from CA ERwin Data Modeler, I get the following error message:

The server name or address could not be resolved

Solution:

Verify that the server name where the web server is installed is correct and then reconnect to the server.

Note: If CA ERwin Data Modeler and the web server are installed on the same computer, you can give the server name as localhost. Suppose that CA ERwin Data Modeler and the web server are installed on different computers. The server name is the name of the computer where the web server is installed.

Invalid user ID or password

Symptom:

When I try to connect to the server, I get the following error message:

Invalid user ID or password. Please try again to login.

Solution:

Type the correct user name and password.

Note: The user must be an application level user and not a database user.

Error 12029

Symptom:

When I connect to the web server, I get the following error message:

Error 12029

Solution:

Restart the web server.

Unable to load the web page from my web browser

Symptom:

When I type the URL in Internet Explorer or Google Chrome to connect to the web server, I get the following error messages:

For Internet Explorer

Internet Explorer cannot display the webpage

For Google Chrome

Oops! Google Chrome could not connect to localhost:18170

Solution:

Restart the web server.

Test connection failed

Symptom:

When I use the Mart Upgrade utility on a 64-bit computer and upgrade a r7.3 through r8.2.7 Mart to r9.0.0, r9.1.0, or r9.2.0 Mart, I get the following message:

Test connection failed

Solution:

CA ERwin DM is a 32-bit application. When you try to upgrade to r9.0.0, r9.1.0 or r9.2.0 Mart on a 64-bit computer, the COM components do not work.

Follow these steps:

1. Paste the code included at the bottom of this topic to a Notepad file and name it as 64_Bit_Upgrade.reg. Note down the folder where you have created this file.

2. After installing CA ERwin DM version 9.0.0, 9.1.0, or 9.2.0, right-click 64_Bit_Upgrade.reg and select Merge.
3. From the Windows Start menu, go to Run and type the following commands to re-register the EAL components:

```
regsvr32.exe "<Install Dir>\CA\ERwin Data Modeler r9.0\EAL.dll"
```

```
regsvr32.exe "<Install Dir>\CA\ERwin Data Modeler r9.0\Upgrade\R8_Binaries\EAL.dll".
```

4. Right-click 64_Bit_Upgrade.reg and select Merge again.

You can now upgrade to version 9.0.0, 9.1.0, or 9.2.0 Mart on a 64-bit computer.

64_Bit_Upgrade.reg

Copy the following code and paste it to a new Notepad file:

Windows Registry Editor Version 5.00

```
[HKEY_CLASSES_ROOT\Wow6432Node\CLSID\{9527D0BA-ED75-4b0e-BF4B-E35565DE9852}]
```

```
@="CA ERwin Data Modeler Script Client API"
```

```
"AppID"="{9527D0BA-ED75-4b0e-BF4B-E35565DE9852}"
```

```
[HKEY_CLASSES_ROOT\Wow6432Node\AppID\{9527D0BA-ED75-4b0e-BF4B-E35565DE9852}]
```

```
"DllSurrogate"=""
```

```
[HKEY_CLASSES_ROOT\Wow6432Node\CLSID\{40FDB0E6-D772-455d-B1C8-83CE79445403}]
```

```
@="CA ERwin Data Modeler Script Client API Property Bag"
```

```
"AppID"="{40FDB0E6-D772-455d-B1C8-83CE79445403}"
```

```
[HKEY_CLASSES_ROOT\Wow6432Node\AppID\{40FDB0E6-D772-455d-B1C8-83CE79445403}]
```

```
"DllSurrogate"=""
```

```
[HKEY_CLASSES_ROOT\Wow6432Node\CLSID\{6774E2C3-06E9-4943-A8D4-E3007AB1F42E}]
```

```
@="CA ERwin Data Modeler Script Client API"
```

```
"AppID"="{6774E2C3-06E9-4943-A8D4-E3007AB1F42E}"
```

```
[HKEY_CLASSES_ROOT\Wow6432Node\AppID\{6774E2C3-06E9-4943-A8D4-E3007AB1F42E}]
```

```
"DllSurrogate"=""
```

```
[HKEY_CLASSES_ROOT\Wow6432Node\CLSID\{7D7B1602-9832-4ac6-A224-F0092FAF0D7E}]
```

```
@="CA ERwin Data Modeler Script Client API Property Bag"
```

```
"APPID"="{7D7B1602-9832-4ac6-A224-F0092FAF0D7E}"
```

```
[HKEY_CLASSES_ROOT\Wow6432Node\AppID\{7D7B1602-9832-4ac6-A224-F0092FAF0D7E}]
```

"DllSurrogate"=""

[HKEY_LOCAL_MACHINE\SOFTWARE\Classes\AppID\{9527D0BA-ED75-4b0e-BF4B-E35565DE9852}]

[HKEY_LOCAL_MACHINE\SOFTWARE\Classes\AppID\{40FDB0E6-D772-455d-B1C8-83CE79445403}]

[HKEY_LOCAL_MACHINE\SOFTWARE\Classes\AppID\{6774E2C3-06E9-4943-A8D4-E3007AB1F42E}]

[HKEY_LOCAL_MACHINE\SOFTWARE\Classes\AppID\{7D7B1602-9832-4ac6-A224-F0092FAF0D7E}]

Internet Explorer Redirects to a Different Link

Symptom:

Suppose that I install CA ERwin Mart Server on a fresh machine. If I enable the SSL option and I invoke CA ERwin Mart Administrator, Internet Explorer redirects the page to res://ieframe.dll//.

Solution:

Internet Explorer versions 8 through 10 have a security enhancement that blocks the following types of sites:

- Sites that have self-signed certificates
- Sites that have self-signed certificates where the certificate does not match the URL

Follow any of these steps:

- Install the certificate in the Trusted Root Certification Authorities store.
- Add the site to trusted sites.
- Set the Internet Explorer Security level to Medium Low.

Chapter 3: Install and Configure a SQL Server Mart

This section describes how you can install and configure a Mart on a SQL Server database.

This section contains the following topics:

[How to Install and Configure a SQL Server Mart](#) (see page 48)

[How to Upgrade a Mart from r9.0.0 to r9.2.0](#) (see page 63)

[Change the Mart Database Server](#) (see page 70)

[Troubleshooting](#) (see page 70)

How to Install and Configure a SQL Server Mart

In the previous versions, CA ERwin Data Modeler connected to the Mart server directly. Now, CA ERwin Data Modeler connects to the Mart server through a web server.

The Mart comprises the following components:

Database

Stores the user data for the Workgroup Edition. You can use a Microsoft SQL Server 2005, 2008, or 2012 database for the Mart database. You must use a new database and not an existing database that was created for an older version of the data modeling tool.

Applications

Includes a web-based component named CA ERwin Mart Administrator that helps you manage the Mart through a web console.

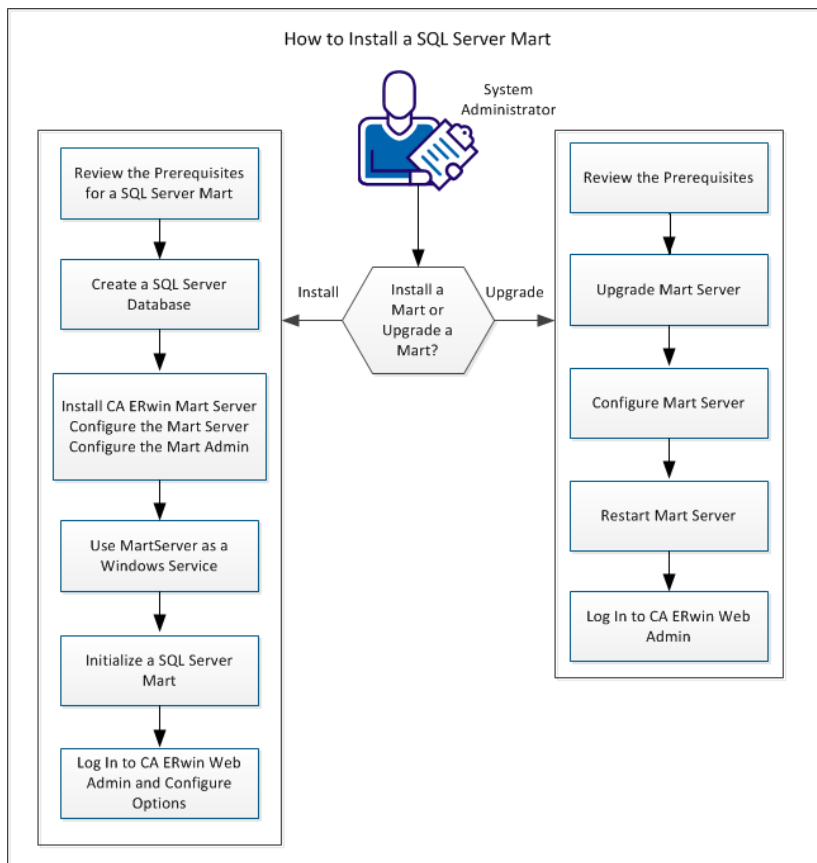
Web server

Hosts CA ERwin Mart Administrator. You can use a web server of your choice. If you have not installed a web server, use the ERwin Mart Server option and install Tomcat.

If you are using the Workgroup Edition, you must install and configure CA ERwin Mart Administrator.

Note: The procedure to upgrade a Mart from r9.0.0 to r9.2.0 is different from the procedure to upgrade from r7.3 through r8.2.7 to r9.2.0. If your Mart version is r9.0.0, use the *How to Upgrade a Mart from r9.0.0 to r9.2.0* procedure to upgrade your Mart to r9.2.0. The models that are created in r9.0.0 are upgraded when a user connects to the r9.2.0 Mart and opens the models. If your Mart version is r7.3 through r8.2.7, use the *Installing and Configuring the Mart* procedure and install the r9.2.0 Mart. After installing the Mart, use the Upgrade Mart utility to upgrade the Mart models from r7.3 through r8.2.7 to r9.2.0.

The following diagram illustrates how to install and configure a Mart:



Complete the following steps in the same order to install and configure the Mart:

1. [Review the prerequisites for a SQL Server Mart](#) (see page 51).
2. [Create a SQL Server Database](#) (see page 54).
3. [Install CA ERwin Mart Server.](#) (see page 22)
4. Use MartServer as a Windows Service.
5. [Initialize a SQL Server Mart.](#) (see page 61)
6. Log in to CA ERwin Mart Administrator and configure settings.

Mart Architecture

In the previous versions, CA ERwin Data Modeler connected to the Mart server directly. Now, the application connects to the Mart server through a web server. The web server includes a web-based administration console—CA ERwin Mart Administrator. If you are using the Workgroup Edition, you must install and configure CA ERwin Mart Administrator.

Database

Stores the user data for the Workgroup Edition. You can use a Microsoft SQL Server 2000, 2005, 2008, or 2012 database for the Mart database. You must use a new database and not an existing database that was created for an older version of the data modeling tool.

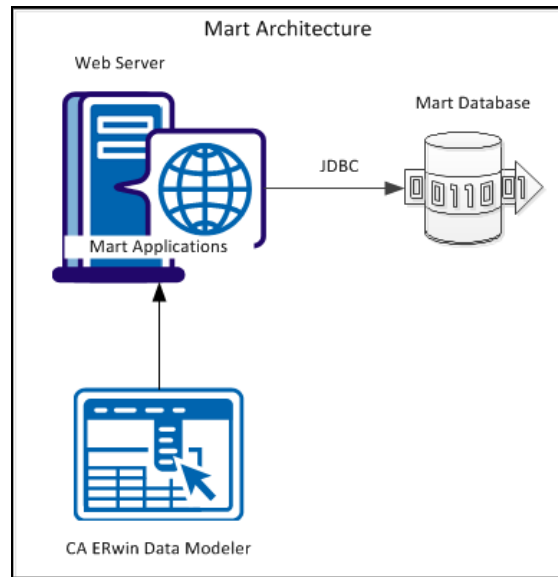
Applications

Includes a web-based component named CA ERwin Mart Administrator that helps you manage the Mart through a web console.

Web server

Hosts CA ERwin Mart Administrator. You can use a web server of your choice. If you have not installed a web server, use the ERwin Mart Server option and install Tomcat.

The following diagram shows the new architecture:



The new architecture has the following benefits:

- **Separate logical and physical users:** In the previous versions, Mart (or Model Manager) users required database level privileges to access the Mart functionality. The Mart database administrators added or deleted users in the Mart database. This approach is changed now. The logical users are separated from physical users, so Mart Administrators can create the Mart users without creating the corresponding database users.
- **Authentication through Active Directory services:** Earlier, if you wanted to provide access to a user group, you added each user individually. Now, because of the new architecture, you can use the Active Directory services and can provide access to the group. Anyone who is part of the group gets access.
- **Mart administration outside CA ERwin Data Modeler:** In the previous versions, Mart Administrators used CA ERwin Data Modeler for administrative activities such as managing permissions. This required non-modelers to know how to use CA ERwin Data Modeler. In the new architecture, the administration component is built on a separate layer on top of CA ERwin Data Modeler and is hosted on a web server. Mart Administrators can access CA ERwin Web Admin from any computer and can perform administrative activities through a web console.

Install a Mart or Upgrade a Mart?

Use the following guidelines to determine if you must install a Mart or upgrade a Mart:

- If you have purchased CA ERwin Data Modeler r9.2.0 Workgroup Edition, then install the r9.2.0 Mart.
- If you have an existing r9.0.0 Mart, then upgrade the Mart from r9.0.0 to r9.2.0.

Review the Prerequisites for a SQL Server Mart

Before you install the Mart components, help ensure that the minimum system requirements that are outlined in this topic are met.

System requirements for Mart server

Hardware requirements (based on physical hardware performance, not a virtual environment):

- 2 GHZ or higher dual core processor
- 4 GB RAM (8 GB or more for large marts)
- 4 GB of disk space or more as required to support your specific mart

Operating system:

- Microsoft Windows Vista
- Microsoft Windows 2008 Server SP2
- Microsoft Windows 2003 Server SP2
- Microsoft Windows XP SP3
- Microsoft Windows 7

Notes:

- CA ERwin Data Modeler has only been certified on the 32-bit versions of the Windows operating systems described in the preceding list. CA ERwin Data Modeler is a 32-bit application. You may experience problems running CA ERwin Data Modeler on a 64-bit operating system.
- CA ERwin Data Modeler is compatible with Microsoft Windows 8 Release Preview. You may experience problems with shortcuts and CA ERwin DM third-party components.
- Microsoft .NET Framework 3.5 or higher
- All current Microsoft Windows critical updates are applied

Database:

- The Mart Server can use a standalone or can share an existing database server for a Microsoft SQL Server 2005, 2008, or 2012 database.
- The SQL Server 2005, 2008, and 2012 TRUSTWORTHY database property is no longer required for the mart. After you install this product, you can optionally reset this property to OFF.
- The dbo role for Microsoft SQL Server is necessary only during the installation or upgrade. You can strip the installer of the dbo role after the installation or upgrade is complete.

CA ERwin Mart Administrator web client:

- Supported browsers:
 - Microsoft Internet Explorer 8[®] or newer
 - Mozilla Firefox[®] v.9.0 or newer
 - Google Chrome 14 or newer
 - Apple Safari 5 or newer
- Adobe Flash plug-in version 8 or newer for the respective browser

Other requirements

Help ensure that the following additional requirements are met:

- If you want to use Microsoft IIS as the web server, you have configured it.
- The DBMS is installed and prepared for creating the Mart Database.
- The Mart database is created. At least one user with administrator privileges is present.
- If you want to add Windows Group users as Mart users, you have the Active Directory Server details.

Note: You can add Windows Group users as normal Mart users, but not the Mart administrator. A Mart administrator must be a database-authenticated user.

Important disclaimer notice on all requirements

1. The requirements that are mentioned previously define the minimum requirements which permit the application to run with reasonable performance based on a small business use case scenario. The actual requirements for an enterprise-wide use case based on larger models and configurations require significantly greater resources to obtain acceptable performance.
 2. These requirements are based on actual physical hardware (no virtual environment) and the following assumptions:
 - Minimal to no network overhead (both the database and application servers are locally installed)
 - Vendor's default install of the current version of their software (with all current service or fix packs)
 - No other applications sharing the defined hardware configuration (for example, a “clean” machine)
- Any other hardware/software configurations are acceptable as long as they provide the same (or better) performance characteristics identified.

Create a SQL Server Database

The following tasks must be performed by the DBA and system administrator responsible for installing CA ERwin Data Modeler Workgroup Edition on a Microsoft SQL Server DBMS:

1. Use a graphical user interface (GUI) tool, ISQL (all versions), SQL Administrator, or Enterprise Manager to create the CA ERwin Data Modeler Workgroup Edition database. If a GUI tool is not available, you can use ISQL to type in the appropriate commands manually.

Your database should meet the following criteria:

- The initial size of the database file should be set to 60 MB.
- The initial size of the transaction log file should be set to 50 MB.
- Set the maximum file size to unrestricted file growth for both files (recommended, but not required).
- Increase the Set Auto grow file by 10 percent (recommended, but not required).

The new database is *owned* by the user who created it.

Set the Truncate Log on Checkpoint option and have the server generate checkpoints frequently. By selecting this option, the log is emptied periodically and should not fill up and cause rollbacks.

Note: For best performance ensure that separate devices are used to store the data and the transaction log.

2. Verify tempdb size.

Significant temporary space is required for installation and use. The temporary segments need at least 16 MB of available space. You should also increase available space as the number of concurrent users increase.

Microsoft SQL Server 2005 Permissions

For a SQL Server 2005 Mart, you must have the *bulkadmin* permission designated. The ability to do bulk inserts (which the public permission permitted previously) is no longer part of the public permission. As the administrator, you explicitly define this permission. Assign the bulkadmin permission to the physical user that connects to the database. If you do not define the permission, when you create a mart using a SQL Server 2005 database, and save it, an error appears.

Specify Use of Foreign Characters With Microsoft SQL Server 2005

For Microsoft SQL Server 2005, 2008, and 2012, modify your registry settings to have certain foreign language characters in your models recognized.

Follow these steps:

1. Click Run on the Start menu.
2. Enter *regedit*.

The Registry Editor opens.

3. Verify or add the following registry entry:

```
[HKEY_LOCAL_MACHINE\SOFTWARE\Microsoft\MSSQLServer\Client\DB-Lib]
```

```
"AutoAnsiToOem"="ON"
```

```
"UseIntlSettings"="ON"
```

4. Click File, Exit.

Your configuration is set to recognize foreign language characters in your models.

Install CA ERwin Mart Server

The Mart Server and Mart Admin war files are deployed on a Web server. You can either use an existing web server, or install the web server through the CA ERwin MartServer Installation Wizard. You must install CA ERwin Mart Server and configure it regardless of whether you use Mart Server as a Windows service.

Note: The procedure to upgrade a Mart from r9.0.0 to r9.2.0 is different from the procedure to upgrade from r7.3 through r8.2.7 to r9.2.0. If your Mart version is r9.0.0, use the *How to Upgrade a Mart from r9.0.0 to r9.2.0* procedure to upgrade your Mart to r9.2.0. The models that are created in r9.0.0 are upgraded when a user connects to the r9.2.0 Mart and opens the models. If your Mart version is r7.3 through r8.2.7, use the *Installing and Configuring the Mart* procedure and install the r9.2.0 Mart. After installing the Mart, use the Upgrade Mart utility to upgrade the Mart models from r7.3 through r8.2.7 to r9.2.0.

Follow these steps:

1. Do one of the following tasks:
 - Insert the installation DVD and select Mart Server Installation.
 - Download the CAEDMMS92.exe file from the online CA Technologies [product page](#) and run it.

The CA ERwin MartServer Installation Wizard appears.

2. Go through the wizard steps to install CA ERwin Mart Server.

Depending on the options you select, CA ERwin Mart Server and/or Java Runtime Environment (JRE) and Tomcat are installed.

Note: If Java (any version) is already available in the computer and the environment variable JRE_HOME is set, the installer overwrites JRE_HOME with the new Java path. The JRE version that is shipped with the installer is 1.7. If a Tomcat web server is already installed in the computer and the environment variable CATALINA_HOME is set, the installer replaces CATALINA_HOME with the new path.

3. From the Windows Start menu, click All Programs, CA, ERwin, ERwin Mart Server r9, Configure MartServer.

The CA ERwin Mart Configuration dialog appears.

Configure the CA ERwin Mart Server

1. Complete the following fields in the Mart Server tab:

Database Type

Specifies the database server type.

Port No.

Specifies the port number of the database server.

Server Name

Specifies the name of the database server where you have installed the Mart database. For example, suppose that you are using SQL Server 2008 as the Mart database. Enter the name of the computer where SQL Server 2008 is installed.

Instance Name

Specifies the name of the database instance.

Database Name

Specifies the name of the Mart database.

Note: If you are installing the Mart for the first time, use a new database. Do not use an existing database that was created for r7.3 through r8.2.7 Mart. If you are upgrading the Mart from r9.0.0 to r9.2.0, use the r9.0.0 Mart database.

User Name

Specifies the user name to connect to the Mart database. Enter the name of a user that is authenticated by the Mart database.

Note: A Windows authenticated user account cannot be used to initialize the Mart.

Password

Specifies the password to connect to the Mart database.

Note: The following fields--Domain Controller Name, Domain/User Name, and Password are required only if you are using the Active Directory authentication.

Domain Controller Name

Specifies the fully qualified name of the Active Directory Server (Domain Controller). Enter the name in the following format:

LDAP://server/distinguished-name

Example: ldap://mktgna:3268/dc=abc, dc=com

Here, *mktgna* is the server name. You can provide either the name of the server or the IP address. 3268 is the port number to which the server listens.

dc=abc, dc=com is the distinguished-name. The distinguished name is the full path of the object.

Note: If you do not know the Domain Controller Name, use the *Nltest* command or talk to your System Administrator.

Domain/User Name

Specifies the domain name and user name in the <domain name>/<user name> format.

Password

Specifies the password of the domain user.

Configure CA ERwin Mart Administrator

1. Enter the following information in the Mart Administrator tab:

Server Name

Specifies the name of the computer where the Web Server is present. For example, if you are using Tomcat, enter the name of the computer where Tomcat is installed.

Default: localhost

Port Number

Specifies the port number on which the Web Server is running.

Default: 18170

Application Name

Specifies the application name with which the Web Server is identified.

Default: MartServer

Transport Layer Security

Specifies if you want to connect to the Mart through a secured connection (SSL). Select this check box if you have implemented SSL.

Hosting Server

Specifies that you want to use the IIS web server to connect to the Mart. Select this check box only if you have configured IIS.

2. Click Configure.

The CA ERwin Mart Administrator and the Mart Server are configured.

More information:

[Configure IIS Web Server](#) (see page 114)

[Implement SSL for IIS](#) (see page 116)

Enable SSL for Tomcat

SSL enables you to access the Mart through a secured connection. You can enable SSL for Tomcat--the default web server, regardless of whether you are installing the Mart for the first time, or you are upgrading it from CA ERwin Data Modeler version 9.0.

Follow these steps:

1. If the Mart Server service is running, stop it. From the Windows Start menu, click All Programs, CA, ERwin, ERwin Mart Server r9, Stop MartServer Service to stop the web server.
2. From the Windows Start menu, click All Programs, CA, ERwin, ERwin Mart Server r9, Enable SSL for Tomcat Webserver.

SSL is enabled for Tomcat and a security certificate is created. You must install this security certificate on all the computers from where you want to access the Mart.

3. From the Windows Start menu, click All Programs, CA, ERwin, ERwin Mart Server r9, Configure MartServer.

The CA ERwin Mart Configuration dialog appears.

4. Go to the Mart Administrator tab and select the Transport Layer Security check box.
5. From the Windows Start menu, click All Programs, CA, ERwin, ERwin Mart Server r9, Start Mart Server Service.
6. From the Windows Start menu, click All Programs, CA, ERwin, ERwin Mart Server r9, CA ERwin Mart Administrator.

The CA ERwin Mart Administrator home page appears and displays HTTPS in the address bar. If a certificate error appears, click Proceed Anyway to begin the session.

Important! If you want to connect to an SSL enabled Mart through API or the Mart Upgrade utility, you must first install the security certificate on the corresponding computer. Install the certificate through the data modeling tool. If you do not install the security certificate, the Mart Upgrade utility and the API will not be able to connect to the SSL enabled Mart.

Disable SSL and Access the Mart Through a Normal Connection

You can disable SSL at any time and access the Mart through a normal connection.

Follow these steps:

1. If the Mart Server Service is running, stop it. From the Windows Start menu, click All Programs, CA, ERwin, ERwin Mart Server r9, Stop Mart Server Service.
2. From the Windows Start menu, click All Programs, CA, ERwin, ERwin Mart Server r9, Disable SSL.
3. From the Windows Start menu, click All Programs, CA, ERwin, ERwin Mart Server r9, Configure MartServer.

The CA ERwin Mart Configuration dialog appears.

4. Go to the Mart Administrator tab and clear the Transport Layer Security check box.
5. From the Windows Start menu, click All Programs, CA, ERwin, ERwin Mart Server r9, Start Mart Server Service.
6. From the Windows Start menu, click All Programs, CA, ERwin, ERwin Mart Server r9, CA ERwin Mart Administrator.

The CA ERwin Mart Administrator home page appears and displays HTTP in the address bar.

Use Mart Server as a Windows Service

The current version of the Mart provides two ways to start the web server that hosts Mart Server:

- Start the web server manually.
- Use a Windows service to start the web server.

For example, if you have used Tomcat as the web server to host Mart Server, you can start Tomcat in two ways:

- Start Tomcat through the startup.bat file or through a shortcut to this file.
- Use a Windows service to start Tomcat.

The benefits of using a Windows service to start a web server are as follows:

- Any user with administrative privileges on a computer can start the Windows service, whereas, only designated users can start a web server manually.
- A Windows service runs regardless of whether a user has logged in. A manually-started web server shuts down when the user who started it logs out.

Follow these steps:

1. From the Windows Start menu, click All Programs, CA, ERwin, ERwin Mart Server r9, Create MartServer Service to create the MartServer Windows service.

Creating the service is a one-time task. After the service is created, you only have to start and stop the service.

2. From the Windows Start menu, click All Programs, CA, ERwin, ERwin Mart Server r9, Start MartServer Service to start the web server.

Initialize a SQL Server Mart

When you access the Mart database through CA ERwin Mart Administrator for the first time, you must initialize the database.

Note: Before you proceed, verify that you have installed a DBMS, created the Mart database and run the initial queries. If the Mart is already initialized, the Login page appears.

Follow these steps:

1. If you are using MartServer as a Windows service, help ensure that the service is started. If not, from the Windows Start menu, click All Programs, CA, ERwin, ERwin Mart Server r9, Start Mart Server to start the Mart Server.

A Windows command prompt window appears and indicates when the server starts.

2. From the Windows Start menu, click All Programs, CA, ERwin, ERwin Mart Server r9, CA ERwin Mart Administrator.

CA ERwin Mart Administrator opens in your default browser.

3. Complete the following fields:

Username

Defines the user name with which you want to access the Mart. Enter the name of a user that is authenticated by the Mart database.

Note: A Windows authenticated user cannot initialize the Mart.

Password

Defines the password for the user name.

Confirm Password

Confirms the password that you entered in the previous field.

Email Address

Defines the email address for the user account that you are creating.

4. Click Initialize.

The user name is added as an administrator of Mart, Mart is initialized, and the Login web page appears. Initializing is a one-time task. After Mart is initialized, the user who initialized must log in first. Later, any other user who wants to use CA ERwin Mart Administrator can log in.

Note: The user name that is entered here is an application level user and not a database user. Remember the password that you have entered here, because without the password you cannot log in to CA ERwin Mart Administrator for the first time.

Log In to CA ERwin Mart Administrator and Configure Settings

After the Mart is initialized, the user who initialized must log in first. When you log in to Mart for the first time, configure it per the requirements of your organization. You can configure the following settings:

- Default profile for the model creator
- Use default password
- Email notification

Follow these steps:

1. From the Windows Start menu, click All Programs, CA, ERwin, ERwin Mart Server r9, CA ERwin Mart Administrator.

The CA ERwin Mart Administrator home page appears. If you have implemented SSL, HTTPS appears in the address bar.

2. Use the credentials with which you initialized the Mart and log in.
3. Click Settings.
4. Complete the following fields:

Default profile for model creator

Specifies the profile that is assigned to a user on a model. This profile is assigned whenever a user creates a model and saves it to Mart for the first time. The user inherits the permissions of the default profile selected here on the model that is saved. For example, suppose that User1 is assigned with Modeler profile and the System Administrator selects Architect as the default profile for model creator. If User1 creates Model1 and saves it to Mart, for Model1, User1 inherits the permissions of Architect. Now, suppose that the System Administrator selects Viewer as the default profile for model creator, and suppose that User1 creates Model2 and saves it to Mart. For Model2, User1 inherits the permissions of Viewer.

Use Default Password

Specifies the default password that you want to use for new users and for resetting passwords, in the absence of an SMTP server for emails.

Note: Select this option only if you do not have an SMTP server that is configured for emails.

SMTP host name

Specifies the name of the SMTP host. Enter the name in the mail.domain.com format. Notification emails are sent from this server.

Port number

Specifies the port number of the SMTP server. The default port number is 25. If your company is using an alternate port number for the mail server, specify that port number.

Authenticate

Specifies whether transactions with the SMTP server are authenticated. Select the check box to authenticate.

User name

Specifies the user name to authenticate the SMTP server. Select the Authenticate check box to enable authentication.

Password

Specifies the password to authenticate the SMTP server. Select the Authenticate check box to enable authentication.

Administrator email

Specifies the email ID of the Mart administrator. Notifications to Mart users are sent from this ID.

No-reply email from

Specifies the email ID from which administrative emails such as the password reset email are sent.

5. Click Save.

Mart options are configured.

You have installed and configured CA ERwin DM release 9.2.0 Mart.

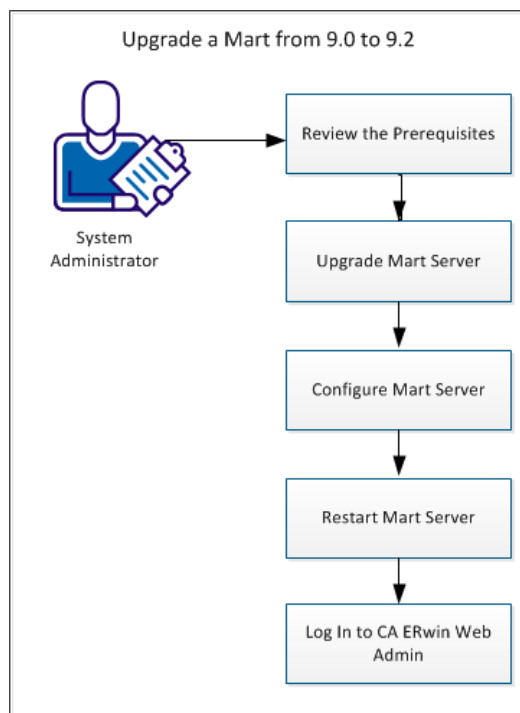
How to Upgrade a Mart from r9.0.0 to r9.2.0

If you are using CA ERwin Data Modeler version 9.0.0 Mart and you want to upgrade it to release 9.2.0, upgrade the Mart Server and the Mart database. The Mart server program is upgraded, so you must implement the upgraded software.

Note: The procedure to upgrade a Mart from r9.0.0 to r9.2.0 is different from the procedure to upgrade from r7.3 through r8.2.7 to r9.2.0. If your Mart version is r9.0.0, use the *How to Upgrade a Mart from r9.0.0 to r9.2.0* procedure to upgrade your Mart to r9.2.0. The models that are created in r9.0.0 are upgraded when a user connects to the r9.2.0 Mart and opens the models. If your Mart version is r7.3 through r8.2.7, use the *Installing and Configuring the Mart* procedure and install the r9.2.0 Mart. After installing the Mart, use the Upgrade Mart utility to upgrade the Mart models from r7.3 through r8.2.7 to r9.2.0.

Important! The current Mart is designed to work with only the current version of CA ERwin Data Modeler. If you try to connect the current Mart with CA ERwin Data Modeler r9.0.0, it may corrupt the Mart and cause unexpected behavior.

The following diagram illustrates how System Administrators can upgrade a Mart from r9.0.0 to r9.2.0:



Complete the following tasks to upgrade an existing r9.0.0 Mart to r9.2.0:

1. [Review the prerequisites.](#) (see page 32)
2. [Upgrade the Mart Server](#) (see page 33).
3. [Configure the Mart Server](#) (see page 33).
4. [Restart the Mart Server service.](#) (see page 36)
5. [Log In to CA ERwin Web Admin](#) (see page 37).

Review the Prerequisites

Review the following prerequisites before you start the upgrade process:

If the Mart database is an Oracle database, the default tablespaces that were used for initializing the r9.0.0 Mart are available for the r9.2.0 Mart.

Upgrade the Mart Server

If you are upgrading a Mart from r9.0.0 to r9.2.0, upgrade the Mart Server.

Note: The procedure to upgrade a Mart from r9.0.0 to r9.2.0 is different from the procedure to upgrade from r7.3 through r8.2.7 to r9.2.0. If your Mart version is r9.0.0, use the *How to Upgrade a Mart from r9.0.0 to r9.2.0* procedure to upgrade your Mart to r9.2.0. The models that are created in r9.0.0 are upgraded when a user connects to the r9.2.0 Mart and opens the models. If your Mart version is r7.3 through r8.2.7, use the *Installing and Configuring the Mart* procedure and install the r9.2.0 Mart. After installing the Mart, use the Upgrade Mart utility to upgrade the Mart models from r7.3 through r8.2.7 to r9.2.0.

Follow these steps:

1. Download and run the CAEDMMS92.exe file from the CA Support site.
The CA ERwin Mart Server r9.2.0 Install Shield Wizard dialog appears.
2. Follow the wizard.
The Mart Server is upgraded.
3. Restart your computer.

Configure the Mart Server

To connect to the r9.2.0 Mart, you must configure the Mart Server. Use the same database that you have used for the r9.0.0 Mart.

Important! The current Mart is designed to work with only the current version of CA ERwin Data Modeler. If you try to connect the current Mart with CA ERwin Data Modeler r9.0.0, it may corrupt the Mart and cause unexpected behavior.

Follow these steps:

1. From the Windows Start menu, click All Programs, CA, ERwin, ERwin Mart Server r9, Configure MartServer.

The CA ERwin Mart Configuration dialog appears.

Configure the CA ERwin Mart Server

1. Complete the following fields in the Mart Server tab:

Database Type

Specifies the database server type.

Port No.

Specifies the port number of the database server.

Server Name

Specifies the name of the database server where you have installed the Mart database. For example, suppose that you are using SQL Server 2008 as the Mart database. Enter the name of the computer where SQL Server 2008 is installed.

Instance Name

Specifies the name of the database instance.

Database Name

Specifies the name of the Mart database.

Note: If you are installing the Mart for the first time, use a new database. Do not use an existing database that was created for r7.3 through r8.2.7 Mart. If you are upgrading the Mart from r9.0.0 to r9.2.0, use the r9.0.0 Mart database.

User Name

Specifies the user name to connect to the Mart database. Enter the name of a user that is authenticated by the Mart database.

Note: A Windows authenticated user account cannot be used to initialize the Mart.

Password

Specifies the password to connect to the Mart database.

Note: The following fields--Domain Controller Name, Domain/User Name, and Password are required only if you are using the Active Directory authentication.

Domain Controller Name

Specifies the fully qualified name of the Active Directory Server (Domain Controller). Enter the name in the following format:

LDAP://server/distinguished-name

Example: ldap://mktgna:3268/dc=abc, dc=com

Here, *mktgna* is the server name. You can provide either the name of the server or the IP address. 3268 is the port number to which the server listens.

dc=abc, dc=com is the distinguished-name. The distinguished name is the full path of the object.

Note: If you do not know the Domain Controller Name, use the *Nltest* command or talk to your System Administrator.

Domain/User Name

Specifies the domain name and user name in the <domain name>/<user name> format.

Password

Specifies the password of the domain user.

Configure CA ERwin Mart Administrator

1. Enter the following information in the Mart Administrator tab:

Server Name

Specifies the name of the computer where the Web Server is present. For example, if you are using Tomcat, enter the name of the computer where Tomcat is installed.

Default: localhost

Port Number

Specifies the port number on which the Web Server is running.

Default: 18170

Application Name

Specifies the application name with which the Web Server is identified.

Default: MartServer

Transport Layer Security

Specifies if you want to connect to the Mart through a secured connection (SSL). Select this check box if you have implemented SSL.

Hosting Server

Specifies that you want to use the IIS web server to connect to the Mart. Select this check box only if you have configured IIS.

2. Click Configure.

The CA ERwin Mart Administrator and the Mart Server are configured.

Restart the Mart Server Service

When you modify the details of the Mart Server and Mart Administration programs, restart the Mart Server service.

Follow these steps:

1. From the Windows Start menu, click All Programs, CA, ERwin, ERwin Mart Server r9, Stop MartServer Service to stop the Mart Server service.
2. From the Windows Start menu, click All Programs, CA, ERwin, ERwin Mart Server r9, Start MartServer Service to start the Mart Server service.

Log In to CA ERwin Mart Administrator

Log in to CA ERwin Mart Administrator to verify if you have successfully upgraded the Mart Server from r9.0.0 to r9.2.0.

Follow these steps:

1. From the Windows Start menu, click All Programs, CA, ERwin, ERwin Mart Server r9, CA ERwin Mart Administrator.

The CA ERwin Mart Administrator log in page appears. If you have implemented SSL, HTTPS appears in the address bar.

2. Use the credentials with which you initialized the Mart and log in.

The CA ERwin Mart Administrator home page appears.

The models that are created in r9.0.0 are upgraded when a user connects to the r9.2.0 Mart and opens the models.

Change the Mart Database Server

Sometimes, you may change the server on which the Mart database is installed, or you may restore the Mart database with a new name. When there is a change the server name or database name, reconfigure the MartServer.

Follow these steps:

1. Back up your Mart database.
2. Restore the database on the designated server.
3. If you use the same computer for Mart Server and restore the database in a different name, include the new database name in the CA ERwin Mart Configuration dialog.

From the Windows Start menu, open the CA ERwin Mart Configuration dialog. In the Mart Server tab, Database Name field, enter the new name with which the database is restored. Enter the current user name and password to access the database. If wrong information is provided here, you may be able to install the Mart, but you cannot log in and cannot use it.

4. If you use a different computer for Mart Server and restore the database in the same name, install the Mart Server on the new computer.

Use the Install CA ERwin Mart Server procedure and install the Mart Server. In the Mart Server tab, Server Name field, enter the name of the new server where the database is restored. Enter the current user name and password to access the database. If wrong information is provided here, you may be able to install the Mart, but you cannot log in and cannot use it.

5. Stop the MartServer service and start it again.
6. From the Windows Start menu, click All Programs, CA, ERwin, ERwin Mart Server r9, CA ERwin Mart Administrator.

Enter the credentials of the Mart administrator and log in.

Troubleshooting

This section explains the errors that you can encounter while installing and configuring Mart, and how you can troubleshoot them.

Note: The Mart Server log files are available in the following location:

Windows XP: {user.home}/Local Settings/Application Data/CA/ERwin Mart Server/logs/application.log

Windows 7: {user.home}/AppData/Local/CA/ERwin Mart Server/logs/application.log

Port out of range

Symptom:

Whenever I connect to the web server, I get the following error message:

```
java.lang.IllegalArgumentException: port out of range 80821.
```

Solution:

Type the correct port number in the Configure CA ERwin Mart Administrator's Server dialog and then restart your web server.

Call failed on the server

Symptom:

When I try to connect to the Mart server, I get the following error:

```
500 The call failed on the server; see server log for details
```

Solution:

The probable reasons for this error could be one of the following reasons:

- The server name is not correct.
- The application name is not correct. By default, the application name is MartServer and it is case-sensitive.

Type the correct server name and application name in the CA ERwin Mart Administrator's Server dialog and the Configure MartServer Details dialog. Restart the web server.

Application Internal Error

Symptom:

When I try to connect to the database, I get the following error:

Application Internal Error

Solution

You get this error when the MartServer application is unable to connect to the required database. The following reasons are probable for this error:

- The database details that are provided in the Configure MartServer Details dialog are incorrect.
- The username and the password for the database are incorrect.
- The database is not present.
- The port number for the database is incorrect.
- The network is down.

Ensure that you enter the correct details of your database in the Mart Server tab of the CA ERwin Mart Configuration dialog.

Mart already exists. Specify another database name

Symptom:

When I try to connect to the Mart, I get the following error message:

An earlier mart is already present in the database you are trying to initialize. This process can not be continued. Please specify another database name to continue.

Solution:

You get this error when you connect to an old Mart that you have used for CA ERwin DM Release 7.x, 8.x, or version 9.0 pre-Beta.

Create a database and provide its details in the Configure MartServer Details dialog.

Initialize page is not loading in Internet Explorer

Symptom:

When I type the URL to initialize my Mart in Internet Explorer, the Initialize Mart page is taking a long time to load.

Solution:

The Initialize Mart page does not load because the Active Scripting option in Internet Explorer is disabled.

To enable Active Scripting, follow these steps:

1. In Internet Explorer, click Tools, Internet Options.
2. In the Security tab, click the Custom Level button.
The Security Settings – Local Intranet Zone window opens.
3. From the list of options, locate Scripting, Active Scripting, and select Enable. Click OK.
4. Restart Internet Explorer and enter the URL to initialize Mart.

The Mart Initialize page opens.

The Tomcat server is not starting properly. The Configure button is disabled.

Symptom:

My administrator has given me the Administrator rights and when I start the Tomcat server, I get a series of errors. Also, I cannot click the Configure button in the configuration dialog because it is disabled.

Solution:

Right-click Start Server, and click Run as Administrator.

The Tomcat server starts without any error, and the configuration button is enabled.

A connection with the server could not be established

Symptom:

When I try to connect to the web server from CA ERwin Data Modeler, I get the following error message:

A connection with the server could not be established

Solution:

Verify that you have provided the correct port number and then reconnect to the web server.

The server name or address could not be resolved

Symptom:

When I try to connect to the web server from CA ERwin Data Modeler, I get the following error message:

The server name or address could not be resolved

Solution:

Verify that the server name where the web server is installed is correct and then reconnect to the server.

Note: If CA ERwin Data Modeler and the web server are installed on the same computer, you can give the server name as localhost. Suppose that CA ERwin Data Modeler and the web server are installed on different computers. The server name is the name of the computer where the web server is installed.

Invalid user ID or password

Symptom:

When I try to connect to the server, I get the following error message:

Invalid user ID or password. Please try again to login.

Solution:

Type the correct user name and password.

Note: The user must be an application level user and not a database user.

Error 12029

Symptom:

When I connect to the web server, I get the following error message:

Error 12029

Solution:

Restart the web server.

Unable to load the web page from my web browser

Symptom:

When I type the URL in Internet Explorer or Google Chrome to connect to the web server, I get the following error messages:

For Internet Explorer

Internet Explorer cannot display the webpage

For Google Chrome

Oops! Google Chrome could not connect to localhost:18170

Solution:

Restart the web server.

Test connection failed

Symptom:

When I use the Mart Upgrade utility on a 64-bit computer and upgrade a r7.3 through r8.2.7 Mart to r9.0.0, r9.1.0, or r9.2.0 Mart, I get the following message:

Test connection failed

Solution:

CA ERwin DM is a 32-bit application. When you try to upgrade to r9.0.0, r9.1.0 or r9.2.0 Mart on a 64-bit computer, the COM components do not work.

Follow these steps:

1. Paste the code included at the bottom of this topic to a Notepad file and name it as 64_Bit_Upgrade.reg. Note down the folder where you have created this file.

2. After installing CA ERwin DM version 9.0.0, 9.1.0, or 9.2.0, right-click 64_Bit_Upgrade.reg and select Merge.
3. From the Windows Start menu, go to Run and type the following commands to re-register the EAL components:

```
regsvr32.exe "<Install Dir>\CA\ERwin Data Modeler r9.0\EAL.dll"
```

```
regsvr32.exe "<Install Dir>\CA\ERwin Data Modeler r9.0\Upgrade\R8_Binaries\EAL.dll".
```

4. Right-click 64_Bit_Upgrade.reg and select Merge again.

You can now upgrade to version 9.0.0, 9.10, or 9.2.0 Mart on a 64-bit computer.

64_Bit_Upgrade.reg

Copy the following code and paste it to a new Notepad file:

Windows Registry Editor Version 5.00

```
[HKEY_CLASSES_ROOT\Wow6432Node\CLSID\{9527D0BA-ED75-4b0e-BF4B-E35565DE9852}]
```

```
@="CA ERwin Data Modeler Script Client API"
```

```
"AppID"="{9527D0BA-ED75-4b0e-BF4B-E35565DE9852}"
```

```
[HKEY_CLASSES_ROOT\Wow6432Node\AppID\{9527D0BA-ED75-4b0e-BF4B-E35565DE9852}]
```

```
"DllSurrogate"=""
```

```
[HKEY_CLASSES_ROOT\Wow6432Node\CLSID\{40FDB0E6-D772-455d-B1C8-83CE79445403}]
```

```
@="CA ERwin Data Modeler Script Client API Property Bag"
```

```
"AppID"="{40FDB0E6-D772-455d-B1C8-83CE79445403}"
```

```
[HKEY_CLASSES_ROOT\Wow6432Node\AppID\{40FDB0E6-D772-455d-B1C8-83CE79445403}]
```

```
"DllSurrogate"=""
```

```
[HKEY_CLASSES_ROOT\Wow6432Node\CLSID\{6774E2C3-06E9-4943-A8D4-E3007AB1F42E}]
```

```
@="CA ERwin Data Modeler Script Client API"
```

```
"AppID"="{6774E2C3-06E9-4943-A8D4-E3007AB1F42E}"
```

```
[HKEY_CLASSES_ROOT\Wow6432Node\AppID\{6774E2C3-06E9-4943-A8D4-E3007AB1F42E}]
```

```
"DllSurrogate"=""
```

```
[HKEY_CLASSES_ROOT\Wow6432Node\CLSID\{7D7B1602-9832-4ac6-A224-F0092FAF0D7E}]
```

```
@="CA ERwin Data Modeler Script Client API Property Bag"
```

```
"APPID"="{7D7B1602-9832-4ac6-A224-F0092FAF0D7E}"
```

```
[HKEY_CLASSES_ROOT\Wow6432Node\AppID\{7D7B1602-9832-4ac6-A224-F0092FAF0D7E}]
```

```
"DllSurrogate"=""  
[HKEY_LOCAL_MACHINE\SOFTWARE\Classes\AppID\{9527D0BA-ED75-4b0e-BF4B-E35565DE9852}]  
[HKEY_LOCAL_MACHINE\SOFTWARE\Classes\AppID\{40FDB0E6-D772-455d-B1C8-83CE79445403}]  
[HKEY_LOCAL_MACHINE\SOFTWARE\Classes\AppID\{6774E2C3-06E9-4943-A8D4-E3007AB1F42E}]  
[HKEY_LOCAL_MACHINE\SOFTWARE\Classes\AppID\{7D7B1602-9832-4ac6-A224-F0092FAF0D7E}]
```

Internet Explorer Redirects to a Different Link

Symptom:

Suppose that I install CA ERwin Mart Server on a fresh machine. If I enable the SSL option and I invoke CA ERwin Mart Administrator, Internet Explorer redirects the page to `res://ieframe.dll//`.

Solution:

Internet Explorer versions 8 through 10 have a security enhancement that blocks the following types of sites:

- Sites that have self-signed certificates
- Sites that have self-signed certificates where the certificate does not match the URL

Follow any of these steps:

- Install the certificate in the Trusted Root Certification Authorities store.
- Add the site to trusted sites.
- Set the Internet Explorer Security level to Medium Low.

Chapter 4: Install and Configure a Sybase Mart

This section describes how you can install and configure a Mart on a Sybase database.

This section contains the following topics:

[How to Install and Configure a Sybase Mart](#) (see page 80)

[How to Upgrade a Mart from r9.0.0 to r9.2.0](#) (see page 97)

[Change the Mart Database Server](#) (see page 104)

[Troubleshooting](#) (see page 104)

How to Install and Configure a Sybase Mart

In the previous versions, CA ERwin Data Modeler connected to the Mart server directly. Now, CA ERwin Data Modeler connects to the Mart server through a web server.

The Mart comprises the following components:

Database

Stores the user data for the Workgroup Edition. You can use a Sybase Adaptive Server Enterprise 15.0 through 15.7 database for the Mart database. You must use a new database and not an existing database that was created for an older version of the data modeling tool.

Applications

Includes a web-based component named CA ERwin Mart Administrator that helps you manage the Mart through a web console.

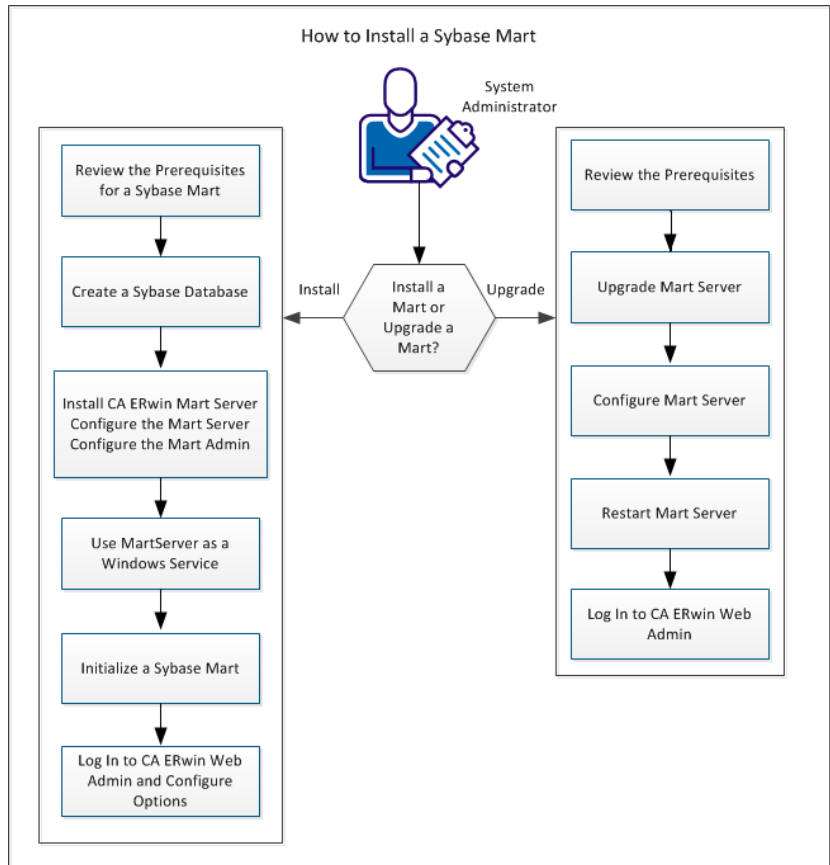
Web server

Hosts CA ERwin Mart Administrator. You can use a web server of your choice. If you have not installed a web server, use the ERwin Mart Server option and install Tomcat.

If you are using the Workgroup Edition, you must install and configure CA ERwin Mart Administrator.

Note: The procedure to upgrade a Mart from r9.0.0 to r9.2.0 is different from the procedure to upgrade from r7.3 through r8.2.7 to r9.2.0. If your Mart version is r9.0.0, use the *How to Upgrade a Mart from r9.0.0 to r9.2.0* procedure to upgrade your Mart to r9.2.0. The models that are created in r9.0.0 are upgraded when a user connects to the r9.2.0 Mart and opens the models. If your Mart version is r7.3 through r8.2.7, use the *Installing and Configuring the Mart* procedure and install the r9.2.0 Mart. After installing the Mart, use the Upgrade Mart utility to upgrade the Mart models from r7.3 through r8.2.7 to r9.2.0.

The following diagram illustrates how to install and configure Mart:



Complete the following steps to install and configure a Mart:

1. [Review the prerequisites for a Sybase Mart](#) (see page 83).
2. [Create a Sybase Database](#) (see page 86).
3. [Install CA ERwin Mart Server](#) (see page 22).
4. [Use MartServer as a Windows Service.](#) (see page 27)
5. [Initialize Mart](#) (see page 94).
6. [Log in to CA ERwin Mart Administrator and configure settings](#) (see page 30).

Complete the following steps to upgrade a Mart from r9.0 to r9.1:

1. [Review the Prerequisites](#) (see page 32)
2. [Upgrade the Mart Server](#) (see page 33)
3. [Configure the Mart Server](#) (see page 33)
4. [Restart the Mart Server](#) (see page 36)
5. [Log In to CA ERwin Web Admin](#) (see page 37)

Mart Architecture

In the previous versions, CA ERwin Data Modeler connected to the Mart server directly. Now, the application connects to the Mart server through a web server. The web server includes a web-based administration console—CA ERwin Mart Administrator. If you are using the Workgroup Edition, you must install and configure CA ERwin Mart Administrator.

The Mart comprises the following components:

Database

Stores the user data for the Workgroup Edition. You can use a Sybase Adaptive Server 15.0 through 15.7 database for the Mart database. You must use a new database and not an existing database that was created for an older version of the data modeling tool.

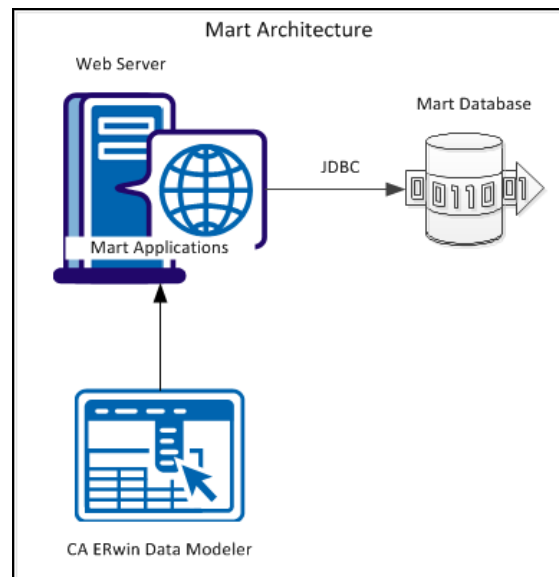
Applications

Includes a web-based component named CA ERwin Mart Administrator that helps you manage the Mart through a web console.

Web server

Hosts CA ERwin Mart Administrator. You can use a web server of your choice. If you have not installed a web server, use the ERwin Mart Server option and install Tomcat.

The following diagram shows the new architecture:



The new architecture has the following benefits:

- **Separate logical and physical users:** In the previous versions, Mart (or Model Manager) users required database level privileges to access the Mart functionality. The Mart database administrators added or deleted users in the Mart database. This approach is changed now. The logical users are separated from physical users, so Mart Administrators can create the Mart users without creating the corresponding database users.
- **Authentication through Active Directory services:** Earlier, if you wanted to provide access to a user group, you added each user individually. Now, because of the new architecture, you can use the Active Directory services and can provide access to the group. Anyone who is part of the group gets access.
- **Mart administration outside CA ERwin Data Modeler:** In the previous versions, Mart Administrators used CA ERwin Data Modeler for administrative activities such as managing permissions. This required non-modelers to know how to use CA ERwin Data Modeler. In the new architecture, the administration component is built on a separate layer on top of CA ERwin Data Modeler and is hosted on a web server. Mart Administrators can access CA ERwin Web Admin from any computer and can perform administrative activities through a web console.

Install a Mart or Upgrade a Mart?

Use the following guidelines to determine if you must install a Mart or upgrade a Mart:

- If you have purchased CA ERwin Data Modeler r9.2.0 Workgroup Edition, then install the r9.2.0 Mart.
- If you have an existing r9.0.0 Mart, then upgrade the Mart from r9.0.0 to r9.2.0.

Review the Prerequisites for a Sybase Mart

Before you install the Mart components, help ensure that the minimum system requirements that are outlined in this topic are met.

System requirements for Mart server

Hardware requirements (based on physical hardware performance, not a virtual environment):

- 2 GHZ or higher dual core processor
- 4 GB RAM (8 GB or more for large marts)
- 4 GB of disk space or more as required to support your specific mart

Operating system:

- Microsoft Windows Vista
- Microsoft Windows 2008 Server SP2
- Microsoft Windows 2003 Server SP2
- Microsoft Windows XP SP3
- Microsoft Windows 7

Notes:

- CA ERwin Data Modeler has only been certified on the 32-bit versions of the Windows operating systems described in the preceding list. CA ERwin Data Modeler is a 32-bit application. You may experience problems running CA ERwin Data Modeler on a 64-bit operating system.
- CA ERwin Data Modeler is compatible with Microsoft Windows 8 Release Preview. You may experience problems with shortcuts and CA ERwin DM third-party components.
- Microsoft .NET Framework 3.5 or higher
- All current Microsoft Windows critical updates are applied

Database:

- The Mart Server can use a standalone or can share an existing database server for a Sybase Adaptive Server Enterprise 15.0 through 15.7 database.
- The dbo role is necessary only during the installation or upgrade. You can revoke the dbo role for the installer after the installation or upgrade is complete.

CA ERwin Mart Administrator web client:

- Supported browsers:
 - Microsoft Internet Explorer 8[®] or newer
 - Mozilla Firefox[®] v.9.0 or newer
 - Google Chrome 14 or newer
 - Apple Safari 5 or newer
- Adobe Flash plug-in version 8 or newer for the respective browser

Other requirements

Help ensure that the following additional requirements are met:

- If you want to use Microsoft IIS as the web server, you have configured it.
- The DBMS is installed and prepared for creating the Mart Database.
- The Mart database is created. At least one user with administrator privileges is present.
- If you want to add Windows Group users as Mart users, you have the Active Directory Server details.

Note: You can add Windows Group users as normal Mart users, but not the Mart administrator. A Mart administrator must be a database-authenticated user.

Important disclaimer notice on all requirements

1. The requirements that are mentioned previously define the minimum requirements which permit the application to run with reasonable performance based on a small business use case scenario. The actual requirements for an enterprise-wide use case based on larger models and configurations require significantly greater resources to obtain acceptable performance.
2. These requirements are based on actual physical hardware (no virtual environment) and the following assumptions:
 - Minimal to no network overhead (both the database and application servers are locally installed)
 - Vendor's default install of the current version of their software (with all current service or fix packs)
 - No other applications sharing the defined hardware configuration (for example, a "clean" machine)

Any other hardware/software configurations are acceptable as long as they provide the same (or better) performance characteristics identified.

Create a Sybase Database

The DBA and the system administrator responsible for installing the software on a Sybase database management system perform the following tasks:

1. Use a graphical user interface (GUI) tool, ISQL (all versions), SQL Administrator, Sybase Central Java, or Enterprise Manager to create the mart database. If a GUI tool is not available, use ISQL to type the appropriate commands manually.

Your database must meet the following criteria:

- The size of the data device you create determines the size of the database. The minimum database size is 32 MB so there has to be at least one device that is 32 MB. Create the data device on a different disk (and disk controller) than the transaction log.
- For optimum performance, verify that separate devices are used to store the data and the transaction log. For example, you can increase performance by creating a 50-MB data device and a 25-MB log device. A minimum of 40 MB of disk space (data and log) is required.

2. Verify the Stored Procedure Cache.

Set the Stored Procedure Cache size to at least 8 MB. Setting it higher improves performance, especially when many users are accessing the server concurrently. Setting it lower results in fatal errors and rollbacks when the Stored Procedure Cache size is exceeded.

Note: The installation creates more than 100 stored procedures. The client invokes these stored procedures to control changes to the data in the database.

3. Verify tempdb size.

Significant temporary space is required for installation and use. The temporary segments need at least 16 MB of available space. Increase the available space as the number of concurrent users increase.

4. Verify the memory allocated to the database server.

Allocate at least 32 MB of RAM to the database server. The amount of RAM allocated is ideally half of the available RAM on the server.

Transact-SQL Commands

If a graphical DBMS access tool is not available, you can use Transact-SQL commands through ISQL.

Example: Create a device using the Transact-SQL DISK INIT command through ISQL

```
DISK INIT NAME = 'mmdata', /* The logical name. */
PHYSNAME = 'C:\SQL\DATA\mmdata.dat', /* The physical name. */
VDEVNO = 1<= virtual_device_number => 255
/* System dependent. */
SIZE = number_of_2K_blocks /* 1024 here is 2MB!!! */
[, VSTART = virtual_address, /* Optional */
CNTRLTYPE = controller_number] /* Optional */
```

Example: Create a database using the Transact-SQL CREATE DATABASE command through ISQL

```
CREATE DATABASE mmmaster
[ON {DEFAULT | database_device} [= size_in_megabytes] /* The device created in #1. */
[, database_device [= size_in_megabytes]]...] /* A database can span devices. */
[LOG ON database device [= size_in_megabytes>] /* Separate log device. */
[, database device [= size_in_megabytes]]...] /* A transaction log can span devices. */
```

Example: Add logins to the database with the *sp_addlogin* and *sp_adduser* commands using Transact-SQL through ISQL

```
sp_addlogin login_id [, passwd [, defdb [, deflanguage]]]
```

```
sp_adduser login_id [, username [, grpname]]
```

After you execute these commands, the DBA can alias an existing login as the Database Owner (dbo) or change the dbo to an existing login using *sp_changedbowner*. Use ISQL to execute the following:

```
sp_changedbowner login_id [,true]
```

Install CA ERwin Mart Server

The Mart Server and Mart Admin war files are deployed on a Web server. You can either use an existing web server, or install the web server through the CA ERwin MartServer Installation Wizard. You must install CA ERwin Mart Server and configure it regardless of whether you use Mart Server as a Windows service.

Note: The procedure to upgrade a Mart from r9.0.0 to r9.2.0 is different from the procedure to upgrade from r7.3 through r8.2.7 to r9.2.0. If your Mart version is r9.0.0, use the *How to Upgrade a Mart from r9.0.0 to r9.2.0* procedure to upgrade your Mart to r9.2.0. The models that are created in r9.0.0 are upgraded when a user connects to the r9.2.0 Mart and opens the models. If your Mart version is r7.3 through r8.2.7, use the *Installing and Configuring the Mart* procedure and install the r9.2.0 Mart. After installing the Mart, use the Upgrade Mart utility to upgrade the Mart models from r7.3 through r8.2.7 to r9.2.0.

Follow these steps:

1. Do one of the following tasks:
 - Insert the installation DVD and select Mart Server Installation.
 - Download the CAEDMMS92.exe file from the online CA Technologies [product page](#) and run it.

The CA ERwin MartServer Installation Wizard appears.

2. Go through the wizard steps to install CA ERwin Mart Server.

Depending on the options you select, CA ERwin Mart Server and/or Java Runtime Environment (JRE) and Tomcat are installed.

Note: If Java (any version) is already available in the computer and the environment variable JRE_HOME is set, the installer overwrites JRE_HOME with the new Java path. The JRE version that is shipped with the installer is 1.7. If a Tomcat web server is already installed in the computer and the environment variable CATALINA_HOME is set, the installer replaces CATALINA_HOME with the new path.

3. From the Windows Start menu, click All Programs, CA, ERwin, ERwin Mart Server r9, Configure MartServer.

The CA ERwin Mart Configuration dialog appears.

Configure the CA ERwin Mart Server

1. Complete the following fields in the Mart Server tab:

Database Type

Specifies the database server type.

Port No.

Specifies the port number of the database server.

Server Name

Specifies the name of the database server where you have installed the Mart database. For example, suppose that you are using SQL Server 2008 as the Mart database. Enter the name of the computer where SQL Server 2008 is installed.

Instance Name

Specifies the name of the database instance.

Database Name

Specifies the name of the Mart database.

Note: If you are installing the Mart for the first time, use a new database. Do not use an existing database that was created for r7.3 through r8.2.7 Mart. If you are upgrading the Mart from r9.0.0 to r9.2.0, use the r9.0.0 Mart database.

User Name

Specifies the user name to connect to the Mart database. Enter the name of a user that is authenticated by the Mart database.

Note: A Windows authenticated user account cannot be used to initialize the Mart.

Password

Specifies the password to connect to the Mart database.

Note: The following fields--Domain Controller Name, Domain/User Name, and Password are required only if you are using the Active Directory authentication.

Domain Controller Name

Specifies the fully qualified name of the Active Directory Server (Domain Controller). Enter the name in the following format:

LDAP://server/distinguished-name

Example: ldap://mktgna:3268/dc=abc, dc=com

Here, *mktgna* is the server name. You can provide either the name of the server or the IP address. 3268 is the port number to which the server listens.

dc=abc, dc=com is the distinguished-name. The distinguished name is the full path of the object.

Note: If you do not know the Domain Controller Name, use the *Nltest* command or talk to your System Administrator.

Domain/User Name

Specifies the domain name and user name in the <domain name>/<user name> format.

Password

Specifies the password of the domain user.

Configure CA ERwin Mart Administrator

1. Enter the following information in the Mart Administrator tab:

Server Name

Specifies the name of the computer where the Web Server is present. For example, if you are using Tomcat, enter the name of the computer where Tomcat is installed.

Default: localhost

Port Number

Specifies the port number on which the Web Server is running.

Default: 18170

Application Name

Specifies the application name with which the Web Server is identified.

Default: MartServer

Transport Layer Security

Specifies if you want to connect to the Mart through a secured connection (SSL). Select this check box if you have implemented SSL.

Hosting Server

Specifies that you want to use the IIS web server to connect to the Mart. Select this check box only if you have configured IIS.

2. Click Configure.

The CA ERwin Mart Administrator and the Mart Server are configured.

More information:

[Configure IIS Web Server](#) (see page 114)

[Implement SSL for IIS](#) (see page 116)

Enable SSL for Tomcat

SSL enables you to access the Mart through a secured connection. You can enable SSL for Tomcat--the default web server, regardless of whether you are installing the Mart for the first time, or you are upgrading it from CA ERwin Data Modeler version 9.0.

Follow these steps:

1. If the Mart Server service is running, stop it. From the Windows Start menu, click All Programs, CA, ERwin, ERwin Mart Server r9, Stop MartServer Service to stop the web server.
2. From the Windows Start menu, click All Programs, CA, ERwin, ERwin Mart Server r9, Enable SSL for Tomcat Webserver.

SSL is enabled for Tomcat and a security certificate is created. You must install this security certificate on all the computers from where you want to access the Mart.

3. From the Windows Start menu, click All Programs, CA, ERwin, ERwin Mart Server r9, Configure MartServer.

The CA ERwin Mart Configuration dialog appears.

4. Go to the Mart Administrator tab and select the Transport Layer Security check box.
5. From the Windows Start menu, click All Programs, CA, ERwin, ERwin Mart Server r9, Start Mart Server Service.
6. From the Windows Start menu, click All Programs, CA, ERwin, ERwin Mart Server r9, CA ERwin Mart Administrator.

The CA ERwin Mart Administrator home page appears and displays HTTPS in the address bar. If a certificate error appears, click Proceed Anyway to begin the session.

Important! If you want to connect to an SSL enabled Mart through API or the Mart Upgrade utility, you must first install the security certificate on the corresponding computer. Install the certificate through the data modeling tool. If you do not install the security certificate, the Mart Upgrade utility and the API will not be able to connect to the SSL enabled Mart.

Disable SSL and Access the Mart Through a Normal Connection

You can disable SSL at any time and access the Mart through a normal connection.

Follow these steps:

1. If the Mart Server Service is running, stop it. From the Windows Start menu, click All Programs, CA, ERwin, ERwin Mart Server r9, Stop Mart Server Service.
2. From the Windows Start menu, click All Programs, CA, ERwin, ERwin Mart Server r9, Disable SSL.
3. From the Windows Start menu, click All Programs, CA, ERwin, ERwin Mart Server r9, Configure MartServer.

The CA ERwin Mart Configuration dialog appears.

4. Go to the Mart Administrator tab and clear the Transport Layer Security check box.
5. From the Windows Start menu, click All Programs, CA, ERwin, ERwin Mart Server r9, Start Mart Server Service.
6. From the Windows Start menu, click All Programs, CA, ERwin, ERwin Mart Server r9, CA ERwin Mart Administrator.

The CA ERwin Mart Administrator home page appears and displays HTTP in the address bar.

Use Mart Server as a Windows Service

The current version of the Mart provides two ways to start the web server that hosts Mart Server:

- Start the web server manually.
- Use a Windows service to start the web server.

For example, if you have used Tomcat as the web server to host Mart Server, you can start Tomcat in two ways:

- Start Tomcat through the startup.bat file or through a shortcut to this file.
- Use a Windows service to start Tomcat.

The benefits of using a Windows service to start a web server are as follows:

- Any user with administrative privileges on a computer can start the Windows service, whereas, only designated users can start a web server manually.
- A Windows service runs regardless of whether a user has logged in. A manually-started web server shuts down when the user who started it logs out.

Follow these steps:

1. From the Windows Start menu, click All Programs, CA, ERwin, ERwin Mart Server r9, Create MartServer Service to create the MartServer Windows service.

Creating the service is a one-time task. After the service is created, you only have to start and stop the service.

2. From the Windows Start menu, click All Programs, CA, ERwin, ERwin Mart Server r9, Start MartServer Service to start the web server.

Initialize Mart

When you access the Mart database through CA ERwin Mart Administrator for the first time, you must initialize the database.

Note: Before you proceed, verify that you have installed a DBMS and created the Mart database. If you are using Oracle, verify that you have run the initial queries. If the Mart is already initialized, the Login page appears.

When you open CA ERwin Mart Administrator for the first time, the Initialize Mart web page that is relevant to your Mart database appears.

Note: Initializing a Sybase Mart is same as initializing a SQL Server Mart.

Initialize a Sybase Mart

When you access the Mart database through CA ERwin Mart Administrator for the first time, you must initialize the database.

Note: Before you proceed, verify that you have installed a DBMS, created the Mart database and run the initial queries. If the Mart is already initialized, the Login page appears.

Follow these steps:

1. If you are using MartServer as a Windows service, help ensure that the service is started. If not, from the Windows Start menu, click All Programs, CA, ERwin, ERwin Mart Server r9, Start Mart Server to start the Mart Server.

A Windows command prompt window appears and indicates when the server starts.

2. From the Windows Start menu, click All Programs, CA, ERwin, ERwin Mart Server r9, CA ERwin Mart Administrator.

CA ERwin Mart Administrator opens in your default browser.

3. Complete the following fields:

Username

Defines the user name with which you want to access the Mart. Enter the name of a user that is authenticated by the Mart database.

Note: A Windows authenticated user cannot initialize the Mart.

Password

Defines the password for the user name.

Confirm Password

Confirms the password that you entered in the previous field.

Email Address

Defines the email address for the user account that you are creating.

4. Click Initialize.

The user name is added as an administrator of Mart, Mart is initialized, and the Login web page appears. Initializing is a one-time task. After Mart is initialized, the user who initialized must log in first. Later, any other user who wants to use CA ERwin Mart Administrator can log in.

Note: The user name that is entered here is an application level user and not a database user. Remember the password that you have entered here, because without the password you cannot log in to CA ERwin Mart Administrator for the first time.

Log In to CA ERwin Mart Administrator and Configure Settings

After the Mart is initialized, the user who initialized must log in first. When you log in to Mart for the first time, configure it per the requirements of your organization. You can configure the following settings:

- Default profile for the model creator
- Use default password
- Email notification

Follow these steps:

1. From the Windows Start menu, click All Programs, CA, ERwin, ERwin Mart Server r9, CA ERwin Mart Administrator.

The CA ERwin Mart Administrator home page appears. If you have implemented SSL, HTTPS appears in the address bar.

2. Use the credentials with which you initialized the Mart and log in.
3. Click Settings.
4. Complete the following fields:

Default profile for model creator

Specifies the profile that is assigned to a user on a model. This profile is assigned whenever a user creates a model and saves it to Mart for the first time. The user inherits the permissions of the default profile selected here on the model that is saved. For example, suppose that User1 is assigned with Modeler profile and the System Administrator selects Architect as the default profile for model creator. If User1 creates Model1 and saves it to Mart, for Model1, User1 inherits the permissions of Architect. Now, suppose that the System Administrator selects Viewer as the default profile for model creator, and suppose that User1 creates Model2 and saves it to Mart. For Model2, User1 inherits the permissions of Viewer.

Use Default Password

Specifies the default password that you want to use for new users and for resetting passwords, in the absence of an SMTP server for emails.

Note: Select this option only if you do not have an SMTP server that is configured for emails.

SMTP host name

Specifies the name of the SMTP host. Enter the name in the mail.domain.com format. Notification emails are sent from this server.

Port number

Specifies the port number of the SMTP server. The default port number is 25. If your company is using an alternate port number for the mail server, specify that port number.

Authenticate

Specifies whether transactions with the SMTP server are authenticated. Select the check box to authenticate.

User name

Specifies the user name to authenticate the SMTP server. Select the Authenticate check box to enable authentication.

Password

Specifies the password to authenticate the SMTP server. Select the Authenticate check box to enable authentication.

Administrator email

Specifies the email ID of the Mart administrator. Notifications to Mart users are sent from this ID.

No-reply email from

Specifies the email ID from which administrative emails such as the password reset email are sent.

5. Click Save.

Mart options are configured.

You have installed and configured CA ERwin DM release 9.2.0 Mart.

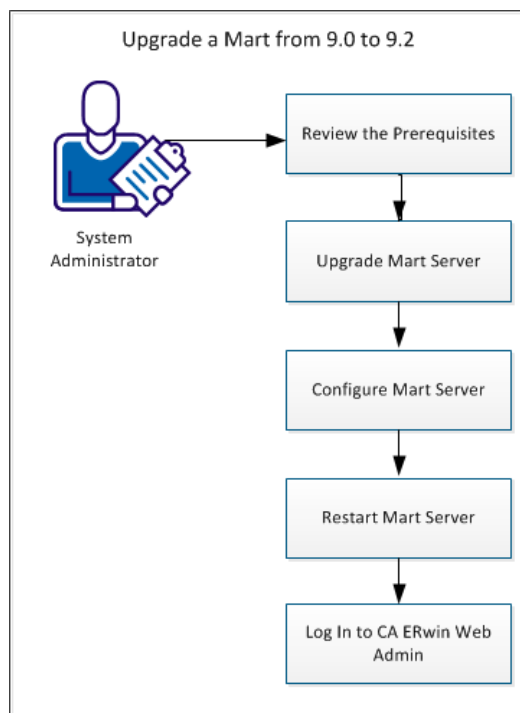
How to Upgrade a Mart from r9.0.0 to r9.2.0

If you are using CA ERwin Data Modeler version 9.0.0 Mart and you want to upgrade it to release 9.2.0, upgrade the Mart Server and the Mart database. The Mart server program is upgraded, so you must implement the upgraded software.

Note: The procedure to upgrade a Mart from r9.0.0 to r9.2.0 is different from the procedure to upgrade from r7.3 through r8.2.7 to r9.2.0. If your Mart version is r9.0.0, use the *How to Upgrade a Mart from r9.0.0 to r9.2.0* procedure to upgrade your Mart to r9.2.0. The models that are created in r9.0.0 are upgraded when a user connects to the r9.2.0 Mart and opens the models. If your Mart version is r7.3 through r8.2.7, use the *Installing and Configuring the Mart* procedure and install the r9.2.0 Mart. After installing the Mart, use the Upgrade Mart utility to upgrade the Mart models from r7.3 through r8.2.7 to r9.2.0.

Important! The current Mart is designed to work with only the current version of CA ERwin Data Modeler. If you try to connect the current Mart with CA ERwin Data Modeler r9.0.0, it may corrupt the Mart and cause unexpected behavior.

The following diagram illustrates how System Administrators can upgrade a Mart from r9.0.0 to r9.2.0:



Complete the following tasks to upgrade an existing r9.0.0 Mart to r9.2.0:

1. [Review the prerequisites.](#) (see page 32)
2. [Upgrade the Mart Server](#) (see page 33).
3. [Configure the Mart Server](#) (see page 33).
4. [Restart the Mart Server service.](#) (see page 36)
5. [Log In to CA ERwin Web Admin](#) (see page 37).

Review the Prerequisites

Review the following prerequisites before you start the upgrade process:

If the Mart database is an Oracle database, the default tablespaces that were used for initializing the r9.0.0 Mart are available for the r9.2.0 Mart.

Upgrade the Mart Server

If you are upgrading a Mart from r9.0.0 to r9.2.0, upgrade the Mart Server.

Note: The procedure to upgrade a Mart from r9.0.0 to r9.2.0 is different from the procedure to upgrade from r7.3 through r8.2.7 to r9.2.0. If your Mart version is r9.0.0, use the *How to Upgrade a Mart from r9.0.0 to r9.2.0* procedure to upgrade your Mart to r9.2.0. The models that are created in r9.0.0 are upgraded when a user connects to the r9.2.0 Mart and opens the models. If your Mart version is r7.3 through r8.2.7, use the *Installing and Configuring the Mart* procedure and install the r9.2.0 Mart. After installing the Mart, use the Upgrade Mart utility to upgrade the Mart models from r7.3 through r8.2.7 to r9.2.0.

Follow these steps:

1. Download and run the CAEDMMS92.exe file from the CA Support site.
The CA ERwin Mart Server r9.2.0 Install Shield Wizard dialog appears.
2. Follow the wizard.
The Mart Server is upgraded.
3. Restart your computer.

Configure the Mart Server

To connect to the r9.2.0 Mart, you must configure the Mart Server. Use the same database that you have used for the r9.0.0 Mart.

Important! The current Mart is designed to work with only the current version of CA ERwin Data Modeler. If you try to connect the current Mart with CA ERwin Data Modeler r9.0.0, it may corrupt the Mart and cause unexpected behavior.

Follow these steps:

1. From the Windows Start menu, click All Programs, CA, ERwin, ERwin Mart Server r9, Configure MartServer.

The CA ERwin Mart Configuration dialog appears.

Configure the CA ERwin Mart Server

1. Complete the following fields in the Mart Server tab:

Database Type

Specifies the database server type.

Port No.

Specifies the port number of the database server.

Server Name

Specifies the name of the database server where you have installed the Mart database. For example, suppose that you are using SQL Server 2008 as the Mart database. Enter the name of the computer where SQL Server 2008 is installed.

Instance Name

Specifies the name of the database instance.

Database Name

Specifies the name of the Mart database.

Note: If you are installing the Mart for the first time, use a new database. Do not use an existing database that was created for r7.3 through r8.2.7 Mart. If you are upgrading the Mart from r9.0.0 to r9.2.0, use the r9.0.0 Mart database.

User Name

Specifies the user name to connect to the Mart database. Enter the name of a user that is authenticated by the Mart database.

Note: A Windows authenticated user account cannot be used to initialize the Mart.

Password

Specifies the password to connect to the Mart database.

Note: The following fields--Domain Controller Name, Domain/User Name, and Password are required only if you are using the Active Directory authentication.

Domain Controller Name

Specifies the fully qualified name of the Active Directory Server (Domain Controller). Enter the name in the following format:

LDAP://server/distinguished-name

Example: ldap://mktgna:3268/dc=abc, dc=com

Here, *mktgna* is the server name. You can provide either the name of the server or the IP address. 3268 is the port number to which the server listens.

dc=abc, dc=com is the distinguished-name. The distinguished name is the full path of the object.

Note: If you do not know the Domain Controller Name, use the *Nltest* command or talk to your System Administrator.

Domain/User Name

Specifies the domain name and user name in the <domain name>/<user name> format.

Password

Specifies the password of the domain user.

Configure CA ERwin Mart Administrator

1. Enter the following information in the Mart Administrator tab:

Server Name

Specifies the name of the computer where the Web Server is present. For example, if you are using Tomcat, enter the name of the computer where Tomcat is installed.

Default: localhost

Port Number

Specifies the port number on which the Web Server is running.

Default: 18170

Application Name

Specifies the application name with which the Web Server is identified.

Default: MartServer

Transport Layer Security

Specifies if you want to connect to the Mart through a secured connection (SSL). Select this check box if you have implemented SSL.

Hosting Server

Specifies that you want to use the IIS web server to connect to the Mart. Select this check box only if you have configured IIS.

2. Click Configure.

The CA ERwin Mart Administrator and the Mart Server are configured.

Restart the Mart Server Service

When you modify the details of the Mart Server and Mart Administration programs, restart the Mart Server service.

Follow these steps:

1. From the Windows Start menu, click All Programs, CA, ERwin, ERwin Mart Server r9, Stop MartServer Service to stop the Mart Server service.
2. From the Windows Start menu, click All Programs, CA, ERwin, ERwin Mart Server r9, Start MartServer Service to start the Mart Server service.

Log In to CA ERwin Mart Administrator

Log in to CA ERwin Mart Administrator to verify if you have successfully upgraded the Mart Server from r9.0.0 to r9.2.0.

Follow these steps:

1. From the Windows Start menu, click All Programs, CA, ERwin, ERwin Mart Server r9, CA ERwin Mart Administrator.

The CA ERwin Mart Administrator log in page appears. If you have implemented SSL, HTTPS appears in the address bar.

2. Use the credentials with which you initialized the Mart and log in.

The CA ERwin Mart Administrator home page appears.

The models that are created in r9.0.0 are upgraded when a user connects to the r9.2.0 Mart and opens the models.

Change the Mart Database Server

Sometimes, you may change the server on which the Mart database is installed, or you may restore the Mart database with a new name. When there is a change the server name or database name, reconfigure the MartServer.

Follow these steps:

1. Back up your Mart database.
2. Restore the database on the designated server.
3. If you use the same computer for Mart Server and restore the database in a different name, include the new database name in the CA ERwin Mart Configuration dialog.

From the Windows Start menu, open the CA ERwin Mart Configuration dialog. In the Mart Server tab, Database Name field, enter the new name with which the database is restored. Enter the current user name and password to access the database. If wrong information is provided here, you may be able to install the Mart, but you cannot log in and cannot use it.

4. If you use a different computer for Mart Server and restore the database in the same name, install the Mart Server on the new computer.

Use the Install CA ERwin Mart Server procedure and install the Mart Server. In the Mart Server tab, Server Name field, enter the name of the new server where the database is restored. Enter the current user name and password to access the database. If wrong information is provided here, you may be able to install the Mart, but you cannot log in and cannot use it.

5. Stop the MartServer service and start it again.
6. From the Windows Start menu, click All Programs, CA, ERwin, ERwin Mart Server r9, CA ERwin Mart Administrator.

Enter the credentials of the Mart administrator and log in.

Troubleshooting

This section explains the errors that you can encounter while installing and configuring Mart, and how you can troubleshoot them.

Note: The Mart Server log files are available in the following location:

Windows XP: {user.home}/Local Settings/Application Data/CA/ERwin Mart Server/logs/application.log

Windows 7: {user.home}/AppData/Local/CA/ERwin Mart Server/logs/application.log

Port out of range

Symptom:

Whenever I connect to the web server, I get the following error message:

```
java.lang.IllegalArgumentException: port out of range 80821.
```

Solution:

Type the correct port number in the Configure CA ERwin Mart Administrator's Server dialog and then restart your web server.

Call failed on the server

Symptom:

When I try to connect to the Mart server, I get the following error:

```
500 The call failed on the server; see server log for details
```

Solution:

The probable reasons for this error could be one of the following reasons:

- The server name is not correct.
- The application name is not correct. By default, the application name is MartServer and it is case-sensitive.

Type the correct server name and application name in the CA ERwin Mart Administrator's Server dialog and the Configure MartServer Details dialog. Restart the web server.

Application Internal Error

Symptom:

When I try to connect to the database, I get the following error:

Application Internal Error

Solution

You get this error when the MartServer application is unable to connect to the required database. The following reasons are probable for this error:

- The database details that are provided in the Configure MartServer Details dialog are incorrect.
- The username and the password for the database are incorrect.
- The database is not present.
- The port number for the database is incorrect.
- The network is down.

Ensure that you enter the correct details of your database in the Mart Server tab of the CA ERwin Mart Configuration dialog.

ORA-12514 TNS listener does not currently know of service requested in connect descriptor

Symptom:

When I try to open the CA ERwin Mart Administrator page, I get the Application Internal Error. The Tomcat windows shows the following error message:

ORA-12514, TNS:listener does not currently know of service requested in connect descriptor

Solution:

Use a fully qualified instance name when starting the Mart Server.

Mart already exists. Specify another database name

Symptom:

When I try to connect to the Mart, I get the following error message:

An earlier mart is already present in the database you are trying to initialize. This process can not be continued. Please specify another database name to continue.

Solution:

You get this error when you connect to an old Mart that you have used for CA ERwin DM Release 7.x, 8.x, or version 9.0 pre-Beta.

Create a database and provide its details in the Configure MartServer Details dialog.

Initialize page is not loading in Internet Explorer

Symptom:

When I type the URL to initialize my Mart in Internet Explorer, the Initialize Mart page is taking a long time to load.

Solution:

The Initialize Mart page does not load because the Active Scripting option in Internet Explorer is disabled.

To enable Active Scripting, follow these steps:

1. In Internet Explorer, click Tools, Internet Options.
2. In the Security tab, click the Custom Level button.
The Security Settings – Local Intranet Zone window opens.
3. From the list of options, locate Scripting, Active Scripting, and select Enable. Click OK.
4. Restart Internet Explorer and enter the URL to initialize Mart.

The Mart Initialize page opens.

The Tomcat server is not starting properly. The Configure button is disabled.

Symptom:

My administrator has given me the Administrator rights and when I start the Tomcat server, I get a series of errors. Also, I cannot click the Configure button in the configuration dialog because it is disabled.

Solution:

Right-click Start Server, and click Run as Administrator.

The Tomcat server starts without any error, and the configuration button is enabled.

A connection with the server could not be established

Symptom:

When I try to connect to the web server from CA ERwin Data Modeler, I get the following error message:

A connection with the server could not be established

Solution:

Verify that you have provided the correct port number and then reconnect to the web server.

The server name or address could not be resolved

Symptom:

When I try to connect to the web server from CA ERwin Data Modeler, I get the following error message:

The server name or address could not be resolved

Solution:

Verify that the server name where the web server is installed is correct and then reconnect to the server.

Note: If CA ERwin Data Modeler and the web server are installed on the same computer, you can give the server name as localhost. Suppose that CA ERwin Data Modeler and the web server are installed on different computers. The server name is the name of the computer where the web server is installed.

Invalid user ID or password

Symptom:

When I try to connect to the server, I get the following error message:

Invalid user ID or password. Please try again to login.

Solution:

Type the correct user name and password.

Note: The user must be an application level user and not a database user.

Error 12029

Symptom:

When I connect to the web server, I get the following error message:

Error 12029

Solution:

Restart the web server.

Unable to load the web page from my web browser

Symptom:

When I type the URL in Internet Explorer or Google Chrome to connect to the web server, I get the following error messages:

For Internet Explorer

Internet Explorer cannot display the webpage

For Google Chrome

Oops! Google Chrome could not connect to localhost:18170

Solution:

Restart the web server.

Test connection failed

Symptom:

When I use the Mart Upgrade utility on a 64-bit computer and upgrade a r7.3 through r8.2.7 Mart to r9.0.0, r9.1.0, or r9.2.0 Mart, I get the following message:

Test connection failed

Solution:

CA ERwin DM is a 32-bit application. When you try to upgrade to r9.0.0, r9.1.0 or r9.2.0 Mart on a 64-bit computer, the COM components do not work.

Follow these steps:

1. Paste the code included at the bottom of this topic to a Notepad file and name it as 64_Bit_Upgrade.reg. Note down the folder where you have created this file.

2. After installing CA ERwin DM version 9.0.0, 9.1.0, or 9.2.0, right-click 64_Bit_Upgrade.reg and select Merge.
3. From the Windows Start menu, go to Run and type the following commands to re-register the EAL components:

```
regsvr32.exe "<Install Dir>\CA\ERwin Data Modeler r9.0\EAL.dll"
```

```
regsvr32.exe "<Install Dir>\CA\ERwin Data Modeler r9.0\Upgrade\R8_Binaries\EAL.dll".
```

4. Right-click 64_Bit_Upgrade.reg and select Merge again.

You can now upgrade to version 9.0.0, 9.10, or 9.2.0 Mart on a 64-bit computer.

64_Bit_Upgrade.reg

Copy the following code and paste it to a new Notepad file:

Windows Registry Editor Version 5.00

```
[HKEY_CLASSES_ROOT\Wow6432Node\CLSID\{9527D0BA-ED75-4b0e-BF4B-E35565DE9852}]
```

```
@="CA ERwin Data Modeler Script Client API"
```

```
"AppID"="{9527D0BA-ED75-4b0e-BF4B-E35565DE9852}"
```

```
[HKEY_CLASSES_ROOT\Wow6432Node\AppID\{9527D0BA-ED75-4b0e-BF4B-E35565DE9852}]
```

```
"DllSurrogate"=""
```

```
[HKEY_CLASSES_ROOT\Wow6432Node\CLSID\{40FDB0E6-D772-455d-B1C8-83CE79445403}]
```

```
@="CA ERwin Data Modeler Script Client API Property Bag"
```

```
"AppID"="{40FDB0E6-D772-455d-B1C8-83CE79445403}"
```

```
[HKEY_CLASSES_ROOT\Wow6432Node\AppID\{40FDB0E6-D772-455d-B1C8-83CE79445403}]
```

```
"DllSurrogate"=""
```

```
[HKEY_CLASSES_ROOT\Wow6432Node\CLSID\{6774E2C3-06E9-4943-A8D4-E3007AB1F42E}]
```

```
@="CA ERwin Data Modeler Script Client API"
```

```
"AppID"="{6774E2C3-06E9-4943-A8D4-E3007AB1F42E}"
```

```
[HKEY_CLASSES_ROOT\Wow6432Node\AppID\{6774E2C3-06E9-4943-A8D4-E3007AB1F42E}]
```

```
"DllSurrogate"=""
```

```
[HKEY_CLASSES_ROOT\Wow6432Node\CLSID\{7D7B1602-9832-4ac6-A224-F0092FAF0D7E}]
```

```
@="CA ERwin Data Modeler Script Client API Property Bag"
```

```
"APPID"="{7D7B1602-9832-4ac6-A224-F0092FAF0D7E}"
```

```
[HKEY_CLASSES_ROOT\Wow6432Node\AppID\{7D7B1602-9832-4ac6-A224-F0092FAF0D7E}]
```

```
"DllSurrogate"=""
```

```
[HKEY_LOCAL_MACHINE\SOFTWARE\Classes\AppID\{9527D0BA-ED75-4b0e-BF4B-E35565DE9852}]
```

```
[HKEY_LOCAL_MACHINE\SOFTWARE\Classes\AppID\{40FDB0E6-D772-455d-B1C8-83CE79445403}]
```

```
[HKEY_LOCAL_MACHINE\SOFTWARE\Classes\AppID\{6774E2C3-06E9-4943-A8D4-E3007AB1F42E}]
```

```
[HKEY_LOCAL_MACHINE\SOFTWARE\Classes\AppID\{7D7B1602-9832-4ac6-A224-F0092FAF0D7E}]
```

Internet Explorer Redirects to a Different Link

Symptom:

Suppose that I install CA ERwin Mart Server on a fresh machine. If I enable the SSL option and I invoke CA ERwin Mart Administrator, Internet Explorer redirects the page to res://ieframe.dll//.

Solution:

Internet Explorer versions 8 through 10 have a security enhancement that blocks the following types of sites:

- Sites that have self-signed certificates
- Sites that have self-signed certificates where the certificate does not match the URL

Follow any of these steps:

- Install the certificate in the Trusted Root Certification Authorities store.
- Add the site to trusted sites.
- Set the Internet Explorer Security level to Medium Low.

Chapter 5: Create a Customized Security Message

As the administrator, you can add a custom message on the Connect to Mart dialog. The message appears whenever one of the client applications (CA ERwin Data Modeler or CA ERwin Data Modeler Navigator Edition) connects to the mart. The message appears after your connection to the desired mart is authenticated and before the connection dialog closes.

Follow these steps:

1. After you install and configure the Mart, locate and open the *privacy.message* file.

If you are using the default web server Tomcat, the file is available in the following folder:

<installation folder>\ERwin Mart Server r9\Tomcat\Webapps\Mart Server

2. Type the message that you want to display and save the file.

The message can be up to 2000 characters long, anything beyond 2000 characters is not displayed. Insert line-breaks manually after every 80 characters, for the message to display properly. If there are no manual line-breaks, Windows automatically inserts line-breaks in the security message. These line-breaks are based on the specific version of Windows you use.

3. From the Windows Start menu, click All Programs, CA, ERwin, ERwin Mart Server r9, Stop MartServer Service to stop the web server.
4. From the Windows Start menu, click All Programs, CA, ERwin, ERwin Mart Server r9, Start MartServer Service to start the web server again.

When a user connects to the Mart the next time, the security message is displayed.

To suppress the security message, open the *privacy.message* file and delete the contents. Do not delete the file.

Chapter 6: Prepare to Use IIS with Mart

If you want to use Microsoft Internet Information Services (IIS) as the web server, configure it before deploying Mart Server.

Configure IIS Web Server

The Mart Server is built using Java technology. Therefore, if you want to connect to Mart through IIS, configure IIS to use the JK ISAPI redirector plugin. Using this plugin, IIS sends servlet and JSP requests to Tomcat.

Note: This procedure describes how to configure IIS 6.0 for Microsoft Windows Server® Enterprise 2008. For more information about configuring other versions of IIS for other operating systems, see the respective vendor documentation.

Follow these steps:

1. Help ensure that Tomcat is working properly. Open a browser and type the following in the Address bar:

```
http://<servername>:18170/MartAdmin
```

The default Tomcat home page appears. <servername> is the name of the computer where you have installed Tomcat. 18170 is the default port number where Tomcat is running. If you are using a different port number, use that port number here. In addition, help ensure that the port number you are using is included in the server.xml file. Typically, the server.xml file is available in the <Tomcat_Home>/conf folder.

2. Install IIS.

For more information about how to install IIS on Windows Server 2008, see Microsoft documentation.

3. Create a folder, for example *Native_IIS* on the computer where you have installed IIS. Download the *isapi_redirect.dll* file for Windows from the Apache Tomcat website and copy to *Native_IIS*. If the name of the DLL file is not *isapi_redirect.dll*, rename it.

4. Create the *workers.properties*, *isapi_redirect.properties*, *uniworkers.properties*, *uriworkermap.properties*, and *isapi_redirect.reg* files in the *Native_IIS* folder.

Note: See the Appendix for sample *workers.properties*, *uniworkers.properties*, *isapi_redirect.reg*, *isapi_redirect.properties*, and *uriworkermap.properties* files.

5. Create a folder named *Logs* under *Native_IIS*. Create two empty files— *isapi.log* and *isapi_redirect.log* under *Logs*.

6. Go to the *Native_IIS* folder, right-click the *isapi_redirect.reg* file, and click *Merge*.

7. Click *Yes* on the message.

The registry file is updated.

8. Follow these steps and create an IIS filter for the DLL placed in Step 5:

- a. From the Windows Start menu, click *Run*, and then type *inetmgr*.

The Internet Information Services (IIS) Manager window opens.

- b. Click the computer name and expand *Sites*.

- c. Right-click Default WebSite and select Add Virtual Directory.
The Add Virtual Directory dialog appears.
 - d. Enter jakarta for Alias. Enter the path for the isapi_redirect.dll file in the Physical Path field and click OK.
 - e. Click Default Web Site.
 - f. Double-click ISAPI filters and click Add under Action.
 - g. Enter Tomcat for Filter name. Enter the path for the isapi_redirect.dll file in the Executables field.
 - h. Click OK and the new ISAPI filter is added.
 - i. Click Default Web Site and then double-click Handler Mappings.
 - j. Click Edit Features and Permissions.
The Edit Features and Permissions dialog opens.
 - k. Select Execute and then click OK.
 - l. Click the computer name and then double-click ISAPI and CGI Restrictions.
 - m. Click Add under Actions.
 - n. Select the path for the isapi_redirect.dll file in the ISAPI or CGI Path field.
 - o. Select *Allow extension path to execute* and then click OK.
9. Restart the IIS web server.
 10. Stop the MartServer service and start it again.

Note: See the Appendix for sample workers.properties, uniworkers.properties, isapi_redirect.reg, isapi_redirect.properties, and uriworkermap.properties files.

Implement SSL for IIS

If you have deployed Mart Server on IIS, you can implement SSL on IIS. SSL lets you access the Mart through a secured connection.

Note: This procedure describes how to enable SSL for IIS 6.0. If you are using a different version of IIS, see the relevant document on the Microsoft website for more information about installing IIS.

Follow these steps:

1. Open Internet Information Services (IIS) Manager.
2. Double-click Server Certificates and then click Create Self-Signed Certificate.
3. Enter a name for the certificate and click OK.
4. Right-click Default Web Site and click Edit Bindings.
5. Click Add and select https in the Type drop-down menu.
6. Select the certificate name that you have added in the SSL Certificate drop-down menu and click OK.
7. Select Default Web Site and then double-click SSL Settings.
8. Select the Require SSL check box and click Apply.
9. Restart IIS and then restart Tomcat.

Note: If the validity of the certificate expires, create another certificate.

Chapter 7: Mart Server Log Files

Mart Server can now generate log files when there are errors. You can configure how the log is generated. For more information about how to configure logging, see the CA ERwin Mart Administrator Help.

Chapter 8: Documentation Formats and Deliverables

The following documents are provided for Mart Server:

Deliverable Name	Format Provided
CA ERwin Mart Administrator Online Help	HTML
Release Notes	HTML and PDF

