

CA ERwin[®] Data Modeler

Release Notes

Release 9.2.0



This Documentation, which includes embedded help systems and electronically distributed materials, (hereinafter referred to as the "Documentation") is for your informational purposes only and is subject to change or withdrawal by CA at any time.

This Documentation may not be copied, transferred, reproduced, disclosed, modified or duplicated, in whole or in part, without the prior written consent of CA. This Documentation is confidential and proprietary information of CA and may not be disclosed by you or used for any purpose other than as may be permitted in (i) a separate agreement between you and CA governing your use of the CA software to which the Documentation relates; or (ii) a separate confidentiality agreement between you and CA.

Notwithstanding the foregoing, if you are a licensed user of the software product(s) addressed in the Documentation, you may print or otherwise make available a reasonable number of copies of the Documentation for internal use by you and your employees in connection with that software, provided that all CA copyright notices and legends are affixed to each reproduced copy.

The right to print or otherwise make available copies of the Documentation is limited to the period during which the applicable license for such software remains in full force and effect. Should the license terminate for any reason, it is your responsibility to certify in writing to CA that all copies and partial copies of the Documentation have been returned to CA or destroyed.

TO THE EXTENT PERMITTED BY APPLICABLE LAW, CA PROVIDES THIS DOCUMENTATION "AS IS" WITHOUT WARRANTY OF ANY KIND, INCLUDING WITHOUT LIMITATION, ANY IMPLIED WARRANTIES OF MERCHANTABILITY, FITNESS FOR A PARTICULAR PURPOSE, OR NONINFRINGEMENT. IN NO EVENT WILL CA BE LIABLE TO YOU OR ANY THIRD PARTY FOR ANY LOSS OR DAMAGE, DIRECT OR INDIRECT, FROM THE USE OF THIS DOCUMENTATION, INCLUDING WITHOUT LIMITATION, LOST PROFITS, LOST INVESTMENT, BUSINESS INTERRUPTION, GOODWILL, OR LOST DATA, EVEN IF CA IS EXPRESSLY ADVISED IN ADVANCE OF THE POSSIBILITY OF SUCH LOSS OR DAMAGE.

The use of any software product referenced in the Documentation is governed by the applicable license agreement and such license agreement is not modified in any way by the terms of this notice.

The manufacturer of this Documentation is CA.

Provided with "Restricted Rights." Use, duplication or disclosure by the United States Government is subject to the restrictions set forth in FAR Sections 12.212, 52.227-14, and 52.227-19(c)(1) - (2) and DFARS Section 252.227-7014(b)(3), as applicable, or their successors.

Copyright © 2013 CA. All rights reserved. All trademarks, trade names, service marks, and logos referenced herein belong to their respective companies.

Contact CA Technologies

Understanding your Support

Review [support maintenance programs and offerings](#).

Registering for Support

Access the CA Support [online registration site](#) to register for product support.

Accessing Technical Support

For your convenience, CA Technologies provides easy access to "One Stop" support for all editions of [CA ERwin Data Modeler](#), and includes the following:

- Online and telephone contact information for technical assistance and customer services
- Information about user communities and forums
- Product and documentation downloads
- CA Support policies and guidelines
- Other helpful resources appropriate for your product

For information about other Home Office, Small Business, and Enterprise CA Technologies products, visit <http://ca.com/support>.

Provide Feedback

If you have comments or questions about CA Technologies product documentation, you can send a message to techpubs@ca.com.

If you would like to provide feedback about CA Technologies product documentation, complete our short [customer survey](#), which is also available on the CA Support website, found at <http://ca.com/docs>.

CA ERwin Data Modeler News and Events

Visit www.erwin.com to get up-to-date news, announcements, and events. View video demos and read up on customer success stories and articles by industry experts.

Documentation Changes

The following documentation updates have been made since the last release (r9.0) of this documentation:

- **New Features and Enhancements**—This chapter describes the new features, enhancements, and changes implemented for r9.2.0.
- **New Features and Enhancements**—This chapter describes the new features, enhancements, and changes implemented for r9.1.
- **Fixed Issues**—This chapter describes the issues that are fixed for r9.1.
- **Documentation Formats and Deliverables**—Updated to include the addition of role based guides in a new section in the bookshelf.

The following documentation updates have been made since the last release (r8.2) of this documentation:

- **New Features and Enhancements**—This chapter describes the new features, enhancements, and changes implemented for r9.
- [Operating System Support](#) (see page 22)—Added version clarifier.
- [System Requirements](#) (see page 22)—Added the requirements for Mart server and web server.
- **Documentation Formats and Deliverables**—Updated to include the addition of role based guides in a new section in the bookshelf.

Contents

Chapter 1: CA ERwin Data Modeler Editions 7

Community Edition.....	8
Standard Edition.....	10
Workgroup Edition.....	11
Navigator Edition.....	12
CA ERwin Data Modeler for Microsoft SQL Azure.....	12

Chapter 2: New Features and Enhancements 15

Support for Oracle 11g.....	16
Changes in Tracing History of Model Objects.....	17
Query Tool Access for Non-Admin Users.....	19
Sorting in the New Relationship Dialog.....	19
Sorting in the Open Dialog.....	19
Enhanced Memory.....	19
User Interface Enhancements.....	20

Chapter 3: System Information 21

Release Numbering Scheme in CA ERwin Data Modeler.....	21
Operating System Support.....	22
System Requirements.....	22
Administrative Privileges Required.....	24
Current User Installation.....	24
Supported Target Server Databases.....	25
CA ERwin Data Modeler Workgroup Edition Requirements.....	25
Administrator Server System Requirements.....	25
DBMS Requirements.....	26
Client Workstation Requirements.....	27
CA ERwin Data Modeler Navigator Edition Requirements.....	27
Support for CA ERwin Data Modeler Workgroup Edition.....	27

Chapter 4: Installation Considerations for CA ERwin Data Modeler Workgroup Edition 29

Microsoft SQL Server 2005 Permissions.....	29
Specify Use of Foreign Characters With Microsoft SQL Server 2005.....	30
Specify Use of Foreign Characters With Microsoft SQL Server 2000.....	30

Chapter 5: Installation Considerations for CA ERwin Data Modeler Navigator Edition	31
Silent Install	31
Chapter 6: General Considerations for Using CA ERwin Data Modeler Workgroup Edition	33
Model Conversion and Complete Compare Differences	33
Model Display in the Difference Reconciliation Dialog	33
Uninstalling CA ERwin Data Modeler Workgroup Edition	33
Chapter 7: General Considerations for Using CA ERwin Data Modeler Navigator Edition	35
Model Display in the Difference Reconciliation Dialog	35
Help Files	35
Chapter 8: Known Issues	37
SQL 1105 Error	37
API Functions not Working for Sybase Mart	37
Model and Version Name Limit on Oracle	37
Editing UDP Values in the Bulk Editor	38
CA ERwin Data Modeler and Crystal Reports Shell Installation	38
Silent Installation	38
Upgrading CA ERwin Data Modeler on Windows Server 2003	39
Mart Reports Work with Crystal Reports Developer Edition	39
Chapter 9: Fixed Issues	41
Issues Fixed in this Release	42
Chapter 10: Documentation	45
Documentation Formats and Deliverables	45
Technical Documentation Series	47
Release Numbers	47
Appendix A: Appendix	49
Appendix B: Third Party Software Acknowledgment	51

Chapter 1: CA ERwin Data Modeler Editions

The following editions of CA ERwin Data Modeler are available:

Community Edition

[Standard Edition](#) (see page 10)

Workgroup Edition

[Navigator Edition](#) (see page 12)

[CA ERwin Data Modeler for Microsoft SQL Azure](#) (see page 12)

This *Release Notes* details new features, enhancements, updates, and known issues for all editions of CA ERwin Data Modeler.

Note: Depending on the edition of CA ERwin Data Modeler you are using, not all features may be enabled for use. For more information about the differences between versions, click one of the Edition links.

Community Edition

The Community Edition of CA ERwin Data Modeler includes a limited number of features from the main product, and is designed to help Data Architects learn data modeling techniques, create simple data models, and learn about the design and maintenance of a production database.

Most of the basic features of CA ERwin Data Modeler are available, with limited access to the following features:

25 Entities/Tables Per Model

You can reverse-engineer, import using Metadata Integration (MITI) bridges, or create up to 25 entities/tables per model. There is no restriction on the number of views you can create.

If you attempt to reverse engineer a script or database with more than 25 tables, or attempt to open a model with more than 25 tables, a warning message displays, reminding you of the object creation limitation in the Community Edition. For Oracle and SQL Server, the reverse engineer process stops after creating 25 tables in the new model. For other databases, a warning message displays, stating that the import feature is disabled.

Note: Some operations that include the creation of temporary tables may also result in exceeding the allowed table limit. For example, if you reverse engineer a DB2/LUW script that contains 25 tables and a materialized view, the temporary table used to create the materialized view will cause you to exceed the allowed table limit for the model.

Read-Only Complete Compare

You can use Complete Compare features to evaluate and compare models, but you cannot commit changes you make in the Complete Compare wizard to the models you compare. The "Finish" button is disabled in the Resolve Differences dialog. In addition, demand loading of databases and Alter Script generation are not supported.

Note: If you are working with a database as part of the compare process, only the first 25 tables are reverse engineered to the model used during the compare. This may result in problems in the Complete Compare Resolve Differences dialog, where objects and properties between the models will not match. To avoid problems, work with a database that has fewer than 25 tables.

Save As

You can save your models in the native *.erwin format or as a template (*.erwin_tmpl). Save As XML, ER1, and ERT is not supported.

File Open

You can open a model in *.erwin or *.erwin_tmpl format, and a SQL DDL file in the format *.sql, *.ers, or *.ddl.

Print a Model

Support for printing models is included in the Community Edition, although the output includes a watermark.

Working with Transformations in the Community Edition

You can work with transformations in the Community Edition to implement design decisions, such as partitioning tables. However, because of the limitation to 25 entities/tables per model, some transformation operations may not be possible. For example, if you are near the limit of 25 tables and choose to partition a table, you may surpass the table limit, and the transformation operation will not complete.

The Advisories Pane on the main workplace window reports a message reminding you that the intended action did not complete because of the object creation limit.

Limited Database Support

Support is included for modeling using the following databases:

- Oracle (10.x/11.x)
- SQL Server (2005/2008/2012)
- DB2 LUW (9.1, 9.5, and 9.7)
- MySQL (5.x, using ODBC)
- ODBC (2.0, 3.0)
- Sybase (12.5/15)

Limited Access to Metadata Integration (MITI) Bridges

Support is limited to the following Metadata Integration (MITI) Bridges for import. Export using Metadata Integration (MITI) Bridges is not supported.

- Sybase PowerDesigner OOM 9.x to 15.x (using UML XMI)
- Sybase PowerDesigner CDM 6.x
- Sybase PowerDesigner CDM 7.5 to 15.x
- Sybase PowerDesigner PDM 6.1.x
- Sybase PowerDesigner 7.5 to 15.x
- Embarcadero ER/Studio
- Embarcadero ER/Studio (using DM1)
- OMG/CWM 1.x XMI 1.x
- OMG/UML 1.x XMI 1.x

Note: If the file you import has more than 25 tables, the Community Edition imports only the first 25 tables.

Other limitations of the Community Edition include the following:

- A copy of Crystal Reports 2008 is not included with the Community Edition.
- Features supporting the creation and implementation of data type standards are not enabled.
- Access to the CA ERwin Data Modeler Workgroup Edition is disabled. When working with Complete Compare, the option to compare your model with a model in a mart is disabled.
- The Community Edition license is valid for one year. After one year you can reinstall the Community Edition with a new license, or purchase and install a full version of the product. You can install and use the Community Edition without entering a license key for 30 days from the date you installed the product.

Note: If you attempt to access a disabled feature in the Community Edition, a pop-up message appears to remind you the feature is not available.

Documentation

The Community Edition includes online help files and PDF guides available on the ERwin Bookshelf, which is accessible from the Start menu.

To view PDF files, you must download and install the Adobe Reader from the Adobe website if it is not already installed on your computer.

Standard Edition

CA ERwin Data Modeler Standard Edition provides all the data modeling features used by Data Architects, Data Administrators, and Application Administrators, but does not include any workgroup modeling capabilities. You can use this edition as a standalone modeling tool, and as a Workgroup Edition client that can access and work with data models stored in a mart. When you enable data movement or dimensional modeling features, it provides a tool for assisting Data Administrators and Capacity Managers design data warehouses. Partners can use the API to create add-on solutions to CA ERwin Data Modeler. With the optional SQL Azure extension, you can take advantage of using SQL Azure as a target database.

Workgroup Edition

CA ERwin Data Modeler Workgroup Edition provides all the data modeling features used by Data Architects and also includes workgroup modeling capabilities used by Database Administrators, Application Administrators, and Application Owners. It provides conflict resolution, versioning, security and standardization for multi-user modeling. Workgroup modeling operates in a client/server environment so processing is shared between the user client workstation and the server where the models are stored. Users access the stored models through a client, such as CA ERwin Data Modeler. Models are held in a platform and network independent database or mart that resides on a central server, using Microsoft SQL Server, Oracle, or Sybase as the host database. With the optional SQL Azure extension, you can take advantage of using SQL Azure as a target database.

The key features of CA ERwin Data Modeler Workgroup Edition include:

Web-based administrator (CA ERwin Mart Administrator)

Helps the administrator administer the Mart. The administrator creates the Mart database, installs and configures CA ERwin Mart Administrator before users can connect to the Mart. CA ERwin Mart Administrator is hosted on a web server and is accessed through an Internet browser.

Model change impact analysis

Provides a change summary showing the impact of changes and the history of the affected model objects, allowing you to select which changes to apply to the model repository.

Version management

Lets Data Architects store, access and analyze the history of a model and the changes made to it, lock down specific versions, run difference reports between versions, and seamlessly roll back models to previous states as required.

Concurrent model access with optional model locking

Allows multiple users to concurrently work on a given model without compromising the integration and integrity of their parallel efforts.

The administrator installs the program and initializes the database on the DBMS server. The administrator also has the responsibility of setting up the library structure in which models are organized, and assigning security profiles to users. Administration overhead is relatively low and proportional to the number and activity level of the users. After a model is saved to the database, control of who can work on the model and how changes are saved to the model is handled by security, making it possible for workgroups to work on large models without confusion. CA ERwin Data Modeler Workgroup Edition supports many security and administrative features related to its multiuser capabilities and the client/server environment in which it operates. For this reason, routine management is usually performed by a dedicated administrator. Administrators can find detailed information regarding their tasks and responsibilities in the CA ERwin Data Modeler Workgroup Edition *Administration Guide*.

You can also use CA ERwin Data Modeler Navigator Edition as a client. Read-only access is permitted to data models, so your workgroup can use this client to share information with others without the risk that unauthorized changes might be saved to the mart.

Navigator Edition

CA ERwin Data Modeler Navigator Edition provides a cost-effective way to provide read-only access to models built with CA ERwin Data Modeler for viewing and analysis. This edition does not permit you to make any changes to models.

The key features of CA ERwin Data Modeler Navigator Edition include:

Read-only access

Read-only access is provided to models created by CA ERwin Data Modeler and it can also be used as a Workgroup Edition client for viewing a data model stored in a mart. Use the Navigator Edition to easily share model information without the risk of unauthorized changes to a model.

Navigation and Viewing

Provides those who need to view models, but not update them, full navigation and viewing of data models.

Reporting and Publication

Offers reporting and printing capabilities that generate in a variety of formats, including HTML and PDF.

CA ERwin Data Modeler for Microsoft SQL Azure

If you plan to use SQL Azure as your target server with CA ERwin Data Modeler, verify that your SQL Azure license is present either on the computer on which you plan to run CA ERwin Data Modeler, or on the License Server. This means, if you are using a local CA ERwin DM license, then you must have the license for SQL Azure locally. If you are using a License Server to get the CA ERwin DM license, then you must have the license for SQL Azure on the License Server. If you do not have a SQL Azure license, you cannot select SQL Azure as a target server. This requirement is effective for all editions of CA ERwin Data Modeler, including Community Edition.

The following tables compare the differences in CA ERwin Data Modeler functionality depending on whether you are using the SQL Azure extension:

Community Edition with SQL Azure Extension
Limited database support, however SQL Azure is available as a target server for new models and deriving models
SQL Azure models can be opened directly

Community Edition with SQL Azure Extension
Opening a file in XML format is supported
Alter Script in Forward Engineering is enabled only for SQL Azure models
No entity/table volume limitation for SQL Azure models only
Notes: <ul style="list-style-type: none"> ■ You can reverse engineer from any of the supported target server databases, but when the reverse engineer process finishes, switch to one of the available CE target server databases (DB2 for LUW, MySQL, ODBC/Generic, Oracle, SQL Azure, SQL Server, or Sybase). ■ If you attempt to reverse engineer more than 25 entities/tables, verify that your target server is SQL Azure. If it is not, then only the first 25 entities/tables are converted and the rest are removed.
On-demand loading and model saving during Complete Compare is enabled only for SQL Azure models
Printing a SQL Azure model is supported and the output does not contain a watermark
Data type standards are supported
Only SQL Azure models can be saved in any of the available formats
Access to marts (workgroup modeling) is not supported
Full use of all available MITI import and export bridges
Crystal Reports is supported

Standard Edition	Standard Edition with SQL Azure Extension
SQL Azure is not available as a target server for new models and deriving models	SQL Azure is available as a target server for new models and deriving models
Opening a SQL Azure model launches a dialog prompting you to select a different target server	SQL Azure models can be opened directly
SQL Azure is not an option in the CA ERwin Data Modeler Target Server dialog	SQL Azure is available for selection in the CA ERwin Data Modeler Target Server dialog

Workgroup Edition	Workgroup Edition with SQL Azure Extension
SQL Azure is not available as a target server for new models and deriving models	SQL Azure is available as a target server for new models and deriving models
Opening a SQL Azure model launches a dialog prompting you to select a different target server	SQL Azure models can be opened directly
SQL Azure is not an option in the CA ERwin Data Modeler Target Server dialog	SQL Azure is available for selection in the CA ERwin Data Modeler Target Server dialog
Mart access is disabled for SQL Azure models	Mart access is enabled for SQL Azure models

Chapter 2: New Features and Enhancements

This section documents the new features and enhancements for CA ERwin Data Modeler Release 9.2.0.

This section contains the following topics:

[Support for Oracle 11g](#) (see page 16)

[Changes in Tracing History of Model Objects](#) (see page 17)

[Query Tool Access for Non-Admin Users](#) (see page 19)

[Sorting in the New Relationship Dialog](#) (see page 19)

[Sorting in the Open Dialog](#) (see page 19)

[Enhanced Memory](#) (see page 19)

[User Interface Enhancements](#) (see page 20)

Support for Oracle 11g

CA ERwin Data Modeler now supports creating models for Oracle 11g databases. The new properties such as virtual on column and invisible index are supported. Full support for partitions on table, materialized view, and materialized view log is included.

The following objects are supported:

- Cluster
- Database
- Database Link
- Directory
- Disk Group
- Index
- Library
- Package
- Partition
 - List
 - Range
 - Hash
 - System Partition
 - Reference Partition
 - Interval Partition
 - Composite (Range–Range)
 - Composite (Range–List)
 - Composite (Range–Hash)
 - Composite (List–Range)
 - Composite (List–Hash)
 - Composite (List–List)
 - Composite (Interval–List)
 - Composite (Interval–Range)
 - Composite (Interval–List)
 - Composite (Hash–Range)
 - Composite (Hash–List)
 - Composite (Hash–Hash)

- Rollback Segments
- Sequences
- Synonyms
- Tables
- Tablespaces

Note: The following properties are not supported for the partitioning feature:

- Table compression (only the COMPRESSION and NOCOMPRESSION parameters are supported)
- VARRAY parameters
- STORAGE parameters such as, ENCRYPT, FLASH_CACHE, OPTIMAL, and maxsize_clause
- LOB SECUREFILE and BASICFILE
- New COMPRESS setting with hash_partitions_by_quantity clause
- SEGMENT CREATION IMMEDIATE/DEFERRED
- Deduplication

Changes in Tracing History of Model Objects

In the previous versions, you saved historical information for the following events:

- Create
- Derive
- Link
- Transform
- Migrate
- Reverse-engineer
- Split a model
- Transformation resolve
- Import from a previous version
- Import from a model
- Import using the API
- Add, edit, or delete user notes

Now, apart from these events, you can save historical information for the following events as well:

- Copy
- Move
- Import from an Active Model Template

Note: The objects for which you can track the history information has not changed.

Viewing History Information

In the previous versions, you viewed the history information of an object in the Notes tab of the object editor. Now, the history information is available in the History tab of the object editor.

You can add comments to the history information in the History tab.

When you track the movement of objects, the location of the source object is tracked and displayed in the Source Path column. Source Path is formatted as follows:

```
$ModelPath\<$ModelName>\$EntryName\$AttributeName
```

\$ModelPath is the path for a model in the local computer or the path for a Mart model in the Mart Server.

The following history information is also tracked, but it is not visible on the History tab. It is included in the XML file when you save a model to XML.

SourceId

Specifies the Long Id of a source object.

SourceShortId

Specifies the Short Id of a source object.

HistoryId

Specifies the Long Id to identify the current history item.

Deleting History Information

You can delete the history information of an object, however, you cannot reverse the change in the Action Log.

Upgrading from Previous Versions

When you upgrade a model from a version earlier than r9.1, the existing history information is migrated, except for the modifier and modified time details.

Query Tool Access for Non-Admin Users

From this release onward, users without an administrator role can work with the ODBC query tool and can generate reports. The ODBC Driver is upgraded from version 6 to version 7 and this upgrade supports the enhancement.

Sorting in the New Relationship Dialog

Earlier, when you added a new relationship through the New Relationship dialog, the entity and table names were displayed in the order in which you had created them. Now, the entity and table names are sorted in alphabetical order.

Sorting in the Open Dialog

Earlier, in the Mart model Open dialog, the model names were displayed in the order in which the models were created. Now, the model names are sorted in alphabetical order or ascending order depending on whether the model name starts with text or numerals.

Enhanced Memory

In the previous versions, the application could use a maximum of 2 GB memory to load a model. Now, the application can use up to 4 GB memory to load a model in the 64-bit Windows operating system.

User Interface Enhancements

This release includes the following enhancements to the user interface:

- The Partitions tab in the Oracle Table Editor is removed and the new Oracle Table Partition Editor is added. To access the Oracle Table Partition Editor, right-click a table and select Partition Properties. Similarly, the Partitions tab in the Oracle Materialized View Editor is removed and the new Oracle Materialized View Partition Editor is added. To access the Oracle Materialized View Partition Editor, right-click a materialized view and select Partition Properties.
- The Partitions tab in the Oracle Materialized View Log Editor is removed and the new Oracle Materialized View Log Partition Editor is added. To access the Oracle Materialized View Log Partition Editor, click Partitions on the General tab of the Oracle Materialized View Log Editor.

Chapter 3: System Information

Review the following system information before installing and using the product.

This section contains the following topics:

[Release Numbering Scheme in CA ERwin Data Modeler](#) (see page 21)

[Operating System Support](#) (see page 22)

[System Requirements](#) (see page 22)

[Administrative Privileges Required](#) (see page 24)

[Current User Installation](#) (see page 24)

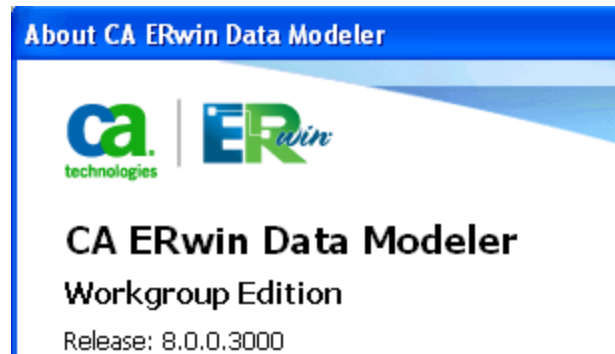
[Supported Target Server Databases](#) (see page 25)

[CA ERwin Data Modeler Workgroup Edition Requirements](#) (see page 25)

[CA ERwin Data Modeler Navigator Edition Requirements](#) (see page 27)

Release Numbering Scheme in CA ERwin Data Modeler

Effective with r8, the release of this product is displayed in the *About CA ERwin Data Modeler* dialog using the following release numbering scheme:



The first number always indicates the main (GA) release, the second number indicates the service pack number of the main release, the third number indicates the patch number of the main release or service pack (or both), and the fourth number indicates the build number of the product. For example, the preceding illustration indicates that the product level is r8, Build 3000. A release of 8.1.2.1500 in this dialog would indicate r8 Service Pack 1, Patch Release 2, Build 1500.

If any documentation is updated after a main release, the cover page of the documentation always includes an edition number to indicate the release for which it was updated (see [Release Numbers](#) (see page 47) for more information).

Operating System Support

CA ERwin Data Modeler requires that you have the 32-bit version of one of the following operating systems installed:

- Microsoft Windows Vista
- Microsoft Windows 2008 Server SP2
- Microsoft Windows 2003 Server SP2
- Microsoft Windows XP SP3
- Microsoft Windows 7

Notes:

- CA ERwin Data Modeler has only been certified on the 32-bit versions of the Windows operating systems described in the preceding list. CA ERwin Data Modeler is a 32-bit application. You may experience problems running CA ERwin Data Modeler on a 64-bit operating system.
- CA ERwin Data Modeler is compatible with Microsoft Windows 8 Release Preview. You may experience problems with shortcuts and CA ERwin DM third-party components.

System Requirements

This section includes the system requirements for the computer on which you plan to install CA ERwin Data Modeler and Mart Server.

The following requirements must be met or exceeded for CA ERwin Data Modeler to install and run correctly:

- Microsoft-based workstation, Intel Dual Core processor or equivalent
- 2 GB available hard drive space
- 2 GB RAM minimum; more is recommended for large models
- DVD-readable device (only if installing from DVD media)

Note: The minimum screen resolution supported is 1024 x 768. If your screen resolution is less than the minimum supported, some portions of the screen will not be visible.

The following requirements must be met or exceeded for Mart Server:

Hardware requirements (based on physical hardware performance, not a virtual environment):

- 2 GHZ or higher dual core processor
- 4 GB RAM (8 GB or more for large marts)
- 4 GB of disk space or more as required to support your specific mart

Operating system requirements:

- Microsoft Windows Vista
- Microsoft Windows 2008 Server SP2
- Microsoft Windows 2003 Server SP2
- Microsoft Windows XP SP3
- Microsoft Windows 7

Notes:

- CA ERwin Data Modeler has only been certified on the 32-bit versions of the Windows operating systems described in the preceding list. CA ERwin Data Modeler is a 32-bit application. You may experience problems running CA ERwin Data Modeler on a 64-bit operating system.
- CA ERwin Data Modeler is compatible with Microsoft Windows 8 Release Preview. You may experience problems with shortcuts and CA ERwin DM third-party components.

Database:

The Mart Server can use a “standalone” or share an existing database server:

- Microsoft SQL Server 2005, 2008, or 2012
- Oracle 10g or 11g
- Sybase Adaptive Server 15.0 through 15.7

The CA ERwin Mart Administrator web client meets the following requirements:

- Supported browsers:
 - Microsoft Internet Explorer 8[®] or newer
 - Mozilla Firefox[®] v.9.0 or newer
 - Google Chrome 14 or newer
 - Apple Safari 5 or newer
- Adobe Flash plug-in version 8 or newer for the respective browser

Administrative Privileges Required

Because the installation process for CA ERwin Data Modeler writes to the registry and system folders, the person installing, upgrading, or removing CA ERwin Data Modeler must have Administrative privileges. If you run an install without Administrative privileges, all files may not be installed or upgraded, and users can encounter problems when running the software.

Current User Installation

In the CA ERwin Data Modeler release 8.0, when you installed CA ERwin Data Modeler, only the user who installed the software could use it. Beginning with r8.2, the license mechanism is changed to *per machine* instead of *per user*. When you install CA ERwin Data Modeler, anyone using the computer can use it. In addition, if a valid license is available, multiple users can use CA ERwin Data Modeler simultaneously on a computer.

Because of this change, the license files are now available in the following locations:

Windows XP

C:\Documents and Settings\All Users\Application Data\CA\ERwin Data Modeler\<release number>

Windows 7

C:\ProgramData\CA\ERwin Data Modeler\<release number>

Supported Target Server Databases

The following target server databases are supported in CA ERwin Data Modeler r9.2.0:

- DB2 for i (5.x/6.x)
- DB2/LUW (9.1, 9.5, 9.7)
- DB2/zOS (8.1, 9.1)
- Informix (9.x/10.x/11.x)
- MySQL (5.x/6.x)
- ODBC/Generic (2.0, 3.0)
- Oracle (10x/11x)
- Progress (9.x/10.x)
- SAS (stabilized support)
- SQL Azure (using the SQL Azure Extension)
- SQL Server (2000, 2005, 2008, 2012)
- Sybase Adaptive Server (12.5/15)
- Sybase IQ (12.x)
- Teradata (2.6, 12, 13)

CA ERwin Data Modeler Workgroup Edition Requirements

If you plan to use CA ERwin Data Modeler Workgroup Edition, review the following requirements to ensure your workgroup environment is set up properly.

Administrator Server System Requirements

The disk space required for the administrative files used to create and manage the database is separate from the disk space required to accommodate models on the server where the database is located. Greater CPU speed, and more RAM and disk space result in better performance.

DBMS Requirements

Before you install CA ERwin Data Modeler to use in a workgroup environment, ensure that you are using a supported DBMS as your host server. This release supports the following host DBMSs:

- Oracle 10g and 11g
- Microsoft SQL Server 2000, 2005, 2008, and 2012
- Sybase 15.x

To create, update, or delete a mart in CA ERwin Data Modeler Workgroup Edition, you must have the following database rights:

- For Microsoft SQL Server 2005, 2008, and 2012 you must be the database owner (dbo).

Notes:

- The dbo is no longer required to have the sysadmin role.
- The SQL Server 2005, 2008, and 2012 TRUSTWORTHY database property is no longer required for the mart. After you install this product, you can optionally reset this property to OFF.
- For Oracle, you must be the database schema owner and have the DBA role.

Before you install Mart on the server, verify that the DBMS environment is prepared for the installation, and that the server system requirements meet at least the minimum specifications. At least one user with administrative privileges is available on the DBMS.

Note: The dbo role for Microsoft SQL Server or Sybase is necessary only during the installation or upgrade. You can strip the installer of the dbo role after the installation or upgrade is complete.

For more information about preparing the DBMS environment, see the CA ERwin Data Modeler Workgroup Edition *Implementation Guide*.

Client Workstation Requirements

You must install CA ERwin Data Modeler on each client workstation that needs to access models in the mart, and each client workstation must have access to the DBMS on which the mart is located. It is recommended that client workstations have at least 2 GB of RAM.

You can install CA ERwin Data Modeler Navigator Edition as a client for CA ERwin Data Modeler Workgroup Edition.

Note: In a workgroup environment, CA ERwin Data Modeler users can only connect to a mart initialized with the same serial number identifier that the user has licensed on their local machine.

CA ERwin Data Modeler Navigator Edition Requirements

If you plan to use CA ERwin Data Modeler Navigator Edition, review the following requirements to ensure your environment is set up properly.

Support for CA ERwin Data Modeler Workgroup Edition

CA ERwin Data Modeler Navigator Edition is enabled for use with a mart-enabled version of CA ERwin Data Modeler (Workgroup Edition). Consult with your mart administrator for a GUEST user permission to access models in CA ERwin Data Modeler Workgroup Edition.

You must use a supported DBMS. This release supports the following host DBMSs:

- Oracle 10g and 11g
- Microsoft SQL Server 2000, 2005, 2008, and 2012
- Sybase 15.x

Chapter 4: Installation Considerations for CA ERwin Data Modeler Workgroup Edition

Review the following installation considerations before installing the product. For more information about the installation process for a workgroup environment, see the CA ERwin Data Modeler Workgroup Edition *Implementation Guide*.

This section contains the following topics:

[Microsoft SQL Server 2005 Permissions](#) (see page 29)

[Specify Use of Foreign Characters With Microsoft SQL Server 2005](#) (see page 30)

[Specify Use of Foreign Characters With Microsoft SQL Server 2000](#) (see page 30)

Microsoft SQL Server 2005 Permissions

For SQL Server 2000, you only need to have *public* assigned to save to the mart. However, when the repository is on a SQL Server 2005 instance, you need to have the *bulkadmin* permission designated as well. The ability to do bulk inserts (which was permitted by public, previously) is no longer part of the public permission. You must explicitly define this permission or when you attempt to save a model to a new mart instance created using a SQL Server 2005 database, an error "You do not have permission to use the bulk load statement." is returned.

Specify Use of Foreign Characters With Microsoft SQL Server 2005

For Microsoft SQL Server 2005 and 2008, modify your registry settings to have certain foreign language characters in your models recognized.

Follow these steps:

1. Click Run on the Start menu.
2. Enter *regedit*.

The Registry Editor opens.

3. Verify or add the following registry entry:

[HKEY_LOCAL_MACHINE\SOFTWARE\Microsoft\MSSQLServer\Client\DB-Lib]

"AutoAnsiToOem"="ON"

"UseIntlSettings"="ON"

4. Click File, Exit.

Your configuration is set to recognize foreign language characters in your models.

Specify Use of Foreign Characters With Microsoft SQL Server 2000

For Microsoft SQL Server 2000, select specific settings in the Client Network Utility to have certain foreign language characters in your models recognized.

Follow these steps:

1. Click Programs, Microsoft SQL Server, Client Network Utility on the Start menu.

The SQL Server Client Network Utility dialog opens.

2. Select the following check boxes on the DB-Library Options tab:

■ Automatic ANSI to OEM conversion

■ Use international settings

3. Click OK.

Your configuration is set to recognize foreign language characters in your models.

Chapter 5: Installation Considerations for CA ERwin Data Modeler Navigator Edition

Review the following installation considerations before installing the product. See the CA ERwin Data Modeler Navigator Edition *User Guide* for more information about the installation process.

Silent Install

This product does not provide an unattended or silent install.

Chapter 6: General Considerations for Using CA ERwin Data Modeler Workgroup Edition

The following sections contain general information you should know before using CA ERwin Data Modeler in a workgroup environment.

This section contains the following topics:

[Model Conversion and Complete Compare Differences](#) (see page 33)

[Model Display in the Difference Reconciliation Dialog](#) (see page 33)

[Uninstalling CA ERwin Data Modeler Workgroup Edition](#) (see page 33)

Model Conversion and Complete Compare Differences

Unlike previous conversions to new releases, starting with r8, it is no longer valid to do a round-trip through another version of the product and use Complete Compare to compare the differences between the models. Due to the new changes and features in r8, the models will be different; use reports to detect and work with model differences.

Model Display in the Difference Reconciliation Dialog

In a workgroup modeling environment, two users may check out and make changes to the same model. The first user may make changes to the model and save the changes to the mart. When the second modeler makes changes and saves them to the mart, the Difference Reconciliation dialog is displayed. You use features in this dialog to view the differences on the object level, the more detailed property level, or search the text of the comparison lists.

Note: In the Difference Reconciliation dialog, the model in the left pane is the current model that you are checking in to the mart. The model in the right pane is the version of the model already in the mart.

Uninstalling CA ERwin Data Modeler Workgroup Edition

You can use the Windows uninstall utility to uninstall CA ERwin Data Modeler. However, when you uninstall CA ERwin Data Modeler in a workgroup environment, the mart database remains intact. To remove the database from your computer, delete the mart database first, and then uninstall CA ERwin Data Modeler.

Chapter 7: General Considerations for Using CA ERwin Data Modeler Navigator Edition

The following sections contain general information you should know before using CA ERwin Data Modeler Navigator Edition.

Model Display in the Difference Reconciliation Dialog

In a workgroup modeling environment, two users may check out and make changes to the same model. The first user may make changes to the model and save the changes to the mart. When the second modeler makes changes and saves them to the mart, the Difference Reconciliation dialog is displayed. You use features in this dialog to view the differences on the object level, the more detailed property level, or search the text of the comparison lists.

Note: In the Difference Reconciliation dialog, the model in the left pane is the current model that you are checking in to the mart. The model in the right pane is the version of the model already in the mart.

Help Files

The context sensitive online help in CA ERwin Data Modeler Navigator Edition is identical to the online help in CA ERwin Data Modeler. This means that the online help may discuss capabilities such as saving a model that is not possible in the CA ERwin Data Modeler Navigator Edition product.

Chapter 8: Known Issues

This section contains the known issues that you should review before using the application.

This section contains the following topics:

[SQL 1105 Error](#) (see page 37)

[API Functions not Working for Sybase Mart](#) (see page 37)

[Model and Version Name Limit on Oracle](#) (see page 37)

[Editing UDP Values in the Bulk Editor](#) (see page 38)

[CA ERwin Data Modeler and Crystal Reports Shell Installation](#) (see page 38)

[Silent Installation](#) (see page 38)

[Upgrading CA ERwin Data Modeler on Windows Server 2003](#) (see page 39)

[Mart Reports Work with Crystal Reports Developer Edition](#) (see page 39)

SQL 1105 Error

When you are upgrading to CA ERwin Data Modeler version 9.0 or 9.1 on Microsoft SQL Server in a workgroup environment, during the mart conversion process, you may get the message "Sql 1105" if you run out of free hard disk space during the process.

Stop the conversion process, and either free or add hard disk space. You should delete the already created r9 tables and then re-attempt the conversion.

API Functions not Working for Sybase Mart

When Sybase is used as the Mart database and the Mart is accessed through API, the `LocateMartDirectory` and `LocateMartDirectoryUnit` functions do not work properly.

Model and Version Name Limit on Oracle

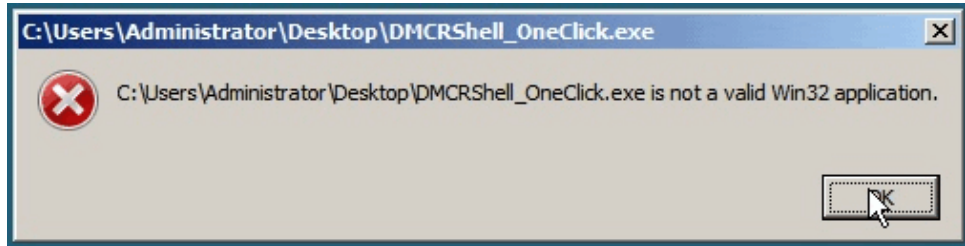
In a workgroup environment, when you save a model to an Oracle mart, the model name must be less than 130 characters. If you exceed the 130 character limit, the model will not save. Because the version name is derived from the model name (for example, `<ModelName>:<version number> by <UserName> on <VersionCreateDate>`), you should use model names considerably less than 130 characters in length to avoid problems with saving a model version.

Editing UDP Values in the Bulk Editor

You can only edit the UDP values of UDPs that use either the *String* or *Number* data type in the Bulk Editor. Bulk editing of UDP values that use either the *Date* or *List* data type is not currently supported. Editing of UDP values for UDPs that use *Date* or *List* is only supported using the *User Defined Properties - Logical* or *User Defined Properties - Physical* dialogs. These dialogs are accessed by selecting User Defined Properties from the Model menu.

CA ERwin Data Modeler and Crystal Reports Shell Installation

If the operating system of the machine on which you want to install CA ERwin Data Modeler version 9.0 through 9.2 and Crystal Reports is either Microsoft Windows Server 2008 or Microsoft Windows Server 2008 SP1, you may encounter the following error:



If you receive this error, the installation will not continue. You can perform one of the following to resolve this problem:

- Upgrade to Microsoft Windows Server 2008 SP2.
- Install CA ERwin Data Modeler version 9.0 through 9.2 and Crystal Reports Shell separately by downloading each application's individual installation program.
- Install CA ERwin Data Modeler version 9.0 through 9.2 and then run the Crystal Reports installation from the install wizard.

Silent Installation

CA ERwin Data Modeler version 9.0 through 9.2 require .NET 3.5 to be installed on your system. If you do not have it installed, the CA ERwin Data Modeler installation will attempt to install it. In this case, we advise against using a silent install.

Upgrading CA ERwin Data Modeler on Windows Server 2003

While upgrading CA ERwin Data Modeler on the Windows Server 2003 platform, you may receive a digital signature policy error. This error occurs when you install version 9.0 through 9.2 of the application. This is an operating system error that can be resolved by applying the update for Windows Server 2003 ([KB925336](#)) from Microsoft.

Mart Reports Work with Crystal Reports Developer Edition

You can generate Mart reports only if you have installed Crystal Reports Developer Edition on the computer from which you want to generate the reports.

Chapter 9: Fixed Issues

This section includes the list of issues that is fixed.

This section contains the following topics:

[Issues Fixed in this Release](#) (see page 42)

Issues Fixed in this Release

The following issues are fixed in this release:

Problem No.: 12378 Issue No.: 21343904 CONSTRAINT NULL SYNTAX INCORRECT

When a specific model was forward engineered to an Oracle database, the word CONSTRAINT was introduced where it was not required. This happened in both CA ERwin Data Modeler r8.2.5 and r9.0. Save or open as XML and comparing with a blank model did not resolve the problem. However, the problem was not seen in a new model.

Problem No.: 12382 Issue No.: 21297458 REVERSE ENGINEER WITH RUNTIME ERROR

CA ERwin Data Modeler version 9 crashed during reverse engineer from a MS SQL Server 2012 SP1 database. It displayed a Runtime Error message and closed.

Problem No.: 12370 Issue No.: 21351937 THE SPECIFIED VERSION OF MODEL CAN'T BE OPENED BY API

In CA ERwin Data Modeler version 9, glossary words could not be uploaded through API using VB Net. Microsoft Visual Studio started hanging when the code was executed.

Problem No.: 12333 Issue No.: 21336377 UNEXPECTED ERROR

In CA ERwin Data Modeler version 9, when a DB2 z/OS Physical Only model was derived from a Logical Only model, the following error message appeared:

"An Unexpected and serious condition occurred on the application. Please contact CA Technical Support with reproduction steps to help resolve this problem. "

Problem No.: 12332 Issue No.: 21263725 TEMPL BINDING PERFORMANC ISSUE

When models from a specific Mart were bound to a template available on the Mart, the process took a very long time.

Problem No.: 12219 Issue No.: 21268815 CANNOT RESOLVE SOME PROPERIES DURING THREE WAY MERGE

In CA ERwin Data Modeler version 9, a role-named FK associated with a recursive relationship could not be resolved.

Problem No.: 12271 Issue No.: 21379530 MARTADMIN GET PARSEING JSON ERROR

For a specific Mart in CA ERwin Data Modeler version 9, when the Session Manager and Permission Manager pages were opened, the error: Error parsing JSON: [object error] appeared. The Permission Manager page could not display the roles such as Administrator, modeler and so on. It did not display the assign user or group to Profile data as well.

Problem No.: 12203 Issue No.: 21262661 CATALOG MANAGER DELETES THE FIRST SELECTED MODEL PATH

In CA ERwin Data Modeler version 9, if a model was searched in the Catalog Manager by typing the name of the model, the resulting model was just highlighted, but not selected.

Problem No.: 12411 Issue No.: 21396558 %SUBSTR DID NOT WORK

In CA ERwin Data Modeler version 8.2.6, the %SUBSTR (string, position) macro did not work properly. However, the %SUBSTR (string, starting position, ending position) macro worked fine.

Problem No.: Issue No.: 21287840-1 MODEL NAME KOREAN BROKEN

In CA ERwin Data Modeler version 9, when a model name with Korean characters was saved to the Mart the following errors occurred:

- When the model name was viewed in the CA ERwin Mart Administrator, junk characters were displayed for the name.
- Changes to the model could not be saved and the following message was displayed:
The model '<model name>' has been moved from library 'Mart/Models' to library 'Mart/Models'. Do you want to continue saving your changes into this model ? Or you can select a new library to save as a new model.

If Yes was clicked to continue saving the model, the error, Unknown Error was displayed.

Problem No.: Issue No.: 20078082-2 UNABLE TO FILTER BY KOREAN

In CA ERwin Data Modeler version 8.0, when Korean characters were entered in the Subject Area field, no results were shown.

Chapter 10: Documentation

This section contains information about current product documentation.

This section contains the following topics:

[Documentation Formats and Deliverables](#) (see page 45)

[Technical Documentation Series](#) (see page 47)

[Release Numbers](#) (see page 47)

Documentation Formats and Deliverables

The Bookshelf provided with CA ERwin Data Modeler, which is installed by default, includes documentation for CA ERwin Data Modeler Navigator Edition. You can open the Bookshelf in a web browser from the CA ERwin Data Modeler Start menu.

The documentation provided on the Bookshelf includes the following guides:

Deliverable Name	Format Provided
Add-In Manager Online Help	HTML
API Reference Guide	HTML and PDF
Data Modeling Overview Guide (This guide was earlier known as Methods Guide.)	HTML and PDF
Editing Forward Engineering Templates	HTML and PDF
Implementation Guide	HTML and PDF
Implementation and Administration Guide (Workgroup Edition) (The individual Administration and Implementation guides are merged to create one guide--Implementation and Administration Guide.)	HTML and PDF
Installation Guide	HTML and PDF
Metamodel Reference	HTML
CA ERwin Data Modeler Online Help	HTML
CA ERwin Mart Administrator Online Help	HTML
Release Notes	HTML and PDF

Deliverable Name	Format Provided
Template Language and Macro Reference	PDF
Upgrade Wizard Help	HTML
User Guide (Navigator Edition)	HTML and PDF

Note: For more information about the CA ERwin Data Modeler editions, see [CA ERwin Data Modeler Editions](#) (see page 7).

The bookshelf includes a new section named Roles. This section includes documentation relevant to the tasks performed by each role in HTML format. The Roles section includes the following documentation:

Role	Deliverable Name
Business Analyst	Applying a theme to a model
Business Analyst	Changing the description of multiple objects
Data Architect	Applying data type standards
Data Architect	Applying naming standards
Data Architect	Creating a model
Data Architect	Generating or viewing reports
Data Architect	Compare models using Complete Compare
Data Architect	Create a Database Schema
Data Architect	How to Reverse Engineer a Database or a Script
System Administrator	Upgrading Mart
System Administrator	Setting up concurrent licenses
System Administrator	Using a local license
System Administrator	Using concurrent licenses
System Administrator	Adding users
System Administrator	Installing and configuring Mart

Technical Documentation Series

The Template Language and Macro Reference (*Template Lang and Macro Ref.PDF*) technical document is provided on the Bookshelf and can also be accessed from the Tech Docs menu item on the CA ERwin Data Modeler Start menu.

The CA ERwin Data Modeler metamodel reference and overview technical documents are provided on the CA ERwin Data Modeler Metamodel Reference Bookshelf. This Bookshelf is accessible from the Tech Docs menu item on the CA ERwin Data Modeler Start menu. It contains an overview of the metamodel (*ERwin Metamodel Overview.PDF*) and the metamodel object and property descriptions are provided in HTML format (*Metamodel Reference*).

To view PDF files, you must download and install the Adobe Reader from the Adobe website if it is not already installed on your computer.

Release Numbers

The release number on the title page of a document might not correspond to the current product release number; however, all documentation delivered with the product, regardless of release number on the title page, will support your use of the current product release. The release number changes only when a significant portion of a document changes to support a new or updated product release. For example, a document for r8 may still be valid for r8.1. Documentation bookshelves always reflect the current product release number.

Occasionally, we must update documentation outside of a new or updated release. To indicate a minor change to the documentation that does not invalidate it for any releases that it supports, we update the edition number on the cover page. First editions do not have an edition number.

Appendix A: Appendix

This section contains the following topics:

[Third Party Software Acknowledgment](#) (see page 51)

Appendix B: Third Party Software Acknowledgment

The following license agreements are available in the \Bookshelf Files\TPSA folder in the CA Bookshelf:

- Boost Software License ([../TPSA/Boost.txt](#))
- Flexera FLEXNet Publisher ([../TPSA/Flexera.txt](#))
- springsource ldap 1.3.1 ([../TPSA/Apache License.txt](#))
- Commons Collections 3.2.1 ([../TPSA/Apache License.txt](#))
- Commons Logging 1.1.1 ([../TPSA/Apache License.txt](#))
- Commons Lang 2.5 ([../TPSA/Apache License.txt](#))
- Commons Pool 1.5.5 ([../TPSA/Apache License.txt](#))
- Commons IO 2.0.1 ([../TPSA/Apache License.txt](#))
- Commons DBCP 1.4 ([../TPSA/Apache License.txt](#))
- Log4j 1.2.16 ([../TPSA/Apache License.txt](#))
- Google-gson 1.7.1 ([../TPSA/Apache License.txt](#))
- Spring Security 3.0.7 ([../TPSA/Apache License.txt](#))
- Spring Framework 3.0.6 ([../TPSA/Apache License.txt](#))
- Commons FileUpload 1.2.2 ([../TPSA/Apache License.txt](#))
- Open CSV 1.8 ([../TPSA/Apache License.txt](#))
- Oracle 11G JDBC driver 11.1.0.6 ([../TPSA/O11G JDBC Driver.txt](#))
- OpenSSL 0.9.7.d ([../TPSA/OpenSSL 097d.txt](#))
- Tomcat 7.0.19 ([../TPSA/Tomcat 7019.txt](#))
- Oracle (Sun) JRE 6 Update 24

JRE 1.6: This Product is distributed with JRE v.1.6. Oracle has provided additional copyright notices and information that may be applicable to portions of the JRE in the THIRDPARTYLICENSEREADME.txt file that accompanies the JRE files.

- Meta Integration Bridges

CA ERwin Data Modeler's metadata import/export capabilities are powered by Meta Integration® Model Bridge (MIMB), copyright 1997-2006.

Meta Integration is a registered trademark of Meta Integration Technologies, Inc. in the United States.