

CA CloudMinder™

Identity Management Connector Xpress Guide

1.5



This Documentation, which includes embedded help systems and electronically distributed materials, (hereinafter referred to as the "Documentation") is for your informational purposes only and is subject to change or withdrawal by CA at any time. This Documentation is proprietary information of CA and may not be copied, transferred, reproduced, disclosed, modified or duplicated, in whole or in part, without the prior written consent of CA.

If you are a licensed user of the software product(s) addressed in the Documentation, you may print or otherwise make available a reasonable number of copies of the Documentation for internal use by you and your employees in connection with that software, provided that all CA copyright notices and legends are affixed to each reproduced copy.

The right to print or otherwise make available copies of the Documentation is limited to the period during which the applicable license for such software remains in full force and effect. Should the license terminate for any reason, it is your responsibility to certify in writing to CA that all copies and partial copies of the Documentation have been returned to CA or destroyed.

TO THE EXTENT PERMITTED BY APPLICABLE LAW, CA PROVIDES THIS DOCUMENTATION "AS IS" WITHOUT WARRANTY OF ANY KIND, INCLUDING WITHOUT LIMITATION, ANY IMPLIED WARRANTIES OF MERCHANTABILITY, FITNESS FOR A PARTICULAR PURPOSE, OR NONINFRINGEMENT. IN NO EVENT WILL CA BE LIABLE TO YOU OR ANY THIRD PARTY FOR ANY LOSS OR DAMAGE, DIRECT OR INDIRECT, FROM THE USE OF THIS DOCUMENTATION, INCLUDING WITHOUT LIMITATION, LOST PROFITS, LOST INVESTMENT, BUSINESS INTERRUPTION, GOODWILL, OR LOST DATA, EVEN IF CA IS EXPRESSLY ADVISED IN ADVANCE OF THE POSSIBILITY OF SUCH LOSS OR DAMAGE.

The use of any software product referenced in the Documentation is governed by the applicable license agreement and such license agreement is not modified in any way by the terms of this notice.

The manufacturer of this Documentation is CA.

Provided with "Restricted Rights." Use, duplication or disclosure by the United States Government is subject to the restrictions set forth in FAR Sections 12.212, 52.227-14, and 52.227-19(c)(1) - (2) and DFARS Section 252.227-7014(b)(3), as applicable, or their successors.

Copyright © 2013 CA. All rights reserved. All trademarks, trade names, service marks, and logos referenced herein belong to their respective companies.

Contact CA Technologies

Contact CA Support

For your convenience, CA Technologies provides one site where you can access the information that you need for your Home Office, Small Business, and Enterprise CA Technologies products. At <http://ca.com/support>, you can access the following resources:

- Online and telephone contact information for technical assistance and customer services
- Information about user communities and forums
- Product and documentation downloads
- CA Support policies and guidelines
- Other helpful resources appropriate for your product

Providing Feedback About Product Documentation

If you have comments or questions about CA Technologies product documentation, you can send a message to techpubs@ca.com.

To provide feedback about CA Technologies product documentation, complete our short customer survey which is available on the CA Support website at <http://ca.com/docs>.

CA Technologies Product References

This document references the following CA Technologies products:

- CA CloudMinder™ Identity Management
- CA CloudMinder™ Advanced Authentication
- CA CloudMinder™ Single Sign-On
- CA Directory
- CA IdentityMinder™
- CA AuthMinder™
- CA RiskMinder™
- CA SiteMinder®
- CA SiteMinder® for Secure Proxy Server
- CA Layer 7

Contents

Chapter 1: Connector Xpress 11

Connector Xpress Overview	11
Communication with Other Components	12
Supported Databases and Directories.....	13
Data Sources.....	13
Set Up Data Sources.....	14
Password Caching.....	14
Connector Xpress Window.....	15
Mapping Tree.....	16
Provisioning Servers Tree.....	18
Where Connector Xpress Stores User Preferences.....	19

Chapter 2: Installing Connector Xpress 21

Install Connector Xpress.....	21
Configure Connector Xpress for CA CloudMinder.....	22
Set Up TLS/SSL for a JNDI Data Source.....	23
Install Connector Xpress Silently	24
Uninstall Connector Xpress Silently	25
Where User Preferences Are Stored	25
Set Preferences	26
Where Settings Are Stored.....	26
Configure the CA IAM CS Host to Communicate with Standalone CA IAM CS.....	26
Provide License Files for Sybase and UDB for z/OS to Connector Xpress	27

Chapter 3: Creating Connectors 29

Projects.....	29
How you Create a Connector Xpress Project	30
Templates.....	30
Template Locations.....	32
Create a Project.....	32
Create a Project Using a Template.....	33
Wizard Mode.....	34
Create a Project Using the Wizard	34
Projects Based on Existing Metadata	35
Create a Project Based on Existing Metadata	35
Open an Existing Project	36

Reopen a Recent Project.....	36
Edit a Project	36
Save a Project.....	37
Multitable Support for JDBC Connectors	37
Compound Class for Multitable Support Example	38
Managing Accounts and Groups	41
Mappings.....	42
Multi-attribute Mappings	42
Map Multi-attributes to the Same Native Attribute	43
Map Ambiguous Attributes.....	44
Types of Associations	44
How to Define Group Membership.....	50
Account Class Mapping Example	51
How You Create a Direct and Reverse Association	52
Direct and Reverse Association Example	53
How to Create an Indirect Association.....	55
Container Classes	58
Input Validation.....	58
Operation Bindings.....	59
Stored Procedures.....	59
Scripts.....	60
Bind Operations to Stored Procedures	61
Bind Operations to Scripts	63
Import Operation Bindings.....	64
Export Operation Bindings.....	65
Stored Procedure and Column Considerations.....	66
Pure Scripted Connectors.....	67
How to Create a Pure Scripted Connector	68
Promote a Connector from a Test to a Production Environment Example.....	69
Mapping Custom Attributes for New Mainframe Connectors.....	70

Chapter 4: Connector Xpress Utilities **73**

What You Can Use Connector Xpress Utilities to Do.....	73
Provisioning Server Configuration.....	73
Add and Configure a Provisioning Server	74
Edit Provisioning Server Details	74
Remove a Provisioning Server.....	75
Connect to a Provisioning Server	75
Connector Server Configuration.....	75
Create a Connector Server Configuration	76
How to Set a Managing Connector Server	76

Edit a Connector Server Configuration	77
Remove a Connector Server Configuration.....	78
Update a CA IAM CS Password.....	78
Manage CA IAM CS with Connector Xpress	79
Configure a Connector Server	81
Connect to a Connector Server	82
Edit Connector Server Details	82
Create an Endpoint Type Managed by a Connector Server	83
Delete an Endpoint Type Managed by a Connector Server	83
Mapping Summary File.....	84
Export a Mapping Summary File	84
Import XML Data Model File	85
Export Data Model to an XML File	86
Merge a Modified Data Model.....	86
Managing Endpoints.....	87
How You Acquire and Manage Endpoints.....	88
Acquire, Explore, and Correlate an Endpoint.....	88
Create an Endpoint Type.....	89
Delete an Endpoint Type.....	89
Clean an Endpoint Type	90
Delete an Endpoint	90
Configuration Data Location	90
CA IAM CS Routing Rules Location	91
Endpoint Type Metadata Location.....	91
Endpoint Type Metadata and CA IAM CS Routing Rules.....	91
View Endpoint Type Metadata and CA IAM CS Routing Rules	91
CA IAM CS Routing Rules Hierarchy	91
Endpoint Type Distinguished Name	92
Connector Xpress Local Storage.....	92
Edit Metadata.....	93
Enumerated Values	94
Metadata and Operations Bindings Editors Considerations	94
Redeploy Metadata	94
DYN Schema Extensions.....	95
Metadata Descriptions.....	95
Using Connector Xpress as a Generic Metadata Editor	96
How you Load Operational Attributes	97

Chapter 5: Troubleshooting **99**

Setting a Managing Connector Server for a Dynamic Endpoint Fails	99
ID/Sequence Column Support.....	99

Failed to Insert because IDENTITY_INSERT is Set to Off.....	100
Multiple Foreign Key Constraints	100
The Role Definition Generator Will Not Run	101
Tuning the Database Used by the Provisioning Server	101
Support for Binary-type Attributes	101
Support for Mandatory Attributes on a JDBC Endpoint.....	102
How to Enable Support for Mapping of Non-mandatory Fields in Provisioning Manager	103
How to Enable Support for Mandatory Attributes on Endpoints other than JDBC Endpoints	104
Configure CA IAM CS to Load the NullValueClassConverter	105
Change the Default Value Used to Store an Empty Value	106
Mapping Against One Endpoint and Acquiring Against Another Endpoint.....	106
Table Attribute Mappings	106
Type Mapping.....	107
MySQL and Informix Stored Procedure Support.....	107
JDBC Naming Attribute.....	107
Sybase Stored Procedures Failure.....	108
Connector Xpress Logging.....	108

Chapter 6: Screens and Dialogs **109**

Account Screens Dialog	110
Attribute Details Dialog	111
Class Associations Dialog	118
Connector Server Details Dialog.....	118
Create New Endpoint Type Dialog	119
Create New Endpoint Dialog	120
Create Operation Binding Dialog.....	121
Custom Types Dialog	123
Direct Association Dialog.....	125
Edit Connector Server Configuration Dialog	127
Edit Metadata for Endpoint Type Dialog	128
Edit Project Settings Dialog	129
Edit Script Dialog	129
Edit Source Dialog	130
Endpoint Class Dialog	132
Enter Password for Data Source Dialog.....	133
Endpoint Type Details Dialog	134
Explore/Correlate Endpoint Dialog	135
Extended Metadata Properties	136
Indirect Association Dialog (JDBC only).....	139
Mapped Classes Dialog.....	141
Map Attributes Dialog	141

Map Class Dialog (JNDI).....	144
Map Class Dialog (JDBC).....	145
Map Compound Class and Attributes Dialog (JDBC).....	146
Mapped Containers Dialog.....	150
Map Container Class Dialog (JNDI).....	150
Merge XML Dialog.....	155
Operations Bindings Editor.....	155
Operation Bindings – Stored Procedure Editor.....	156
Operation Bindings – Operations Editor.....	159
Preferences Dialog.....	160
Provisioning Server Details Dialog.....	161
Provisioning Server Password Required Dialog.....	162
Script Editor Dialog.....	162
Script Name Dialog.....	164
Scripts Dialog.....	164
Select Data Source for new project Dialog.....	165
Select Template Dialog.....	166
Source Types Dialog.....	166
Wizard Summary Dialog.....	167

Chapter 1: Connector Xpress

This section contains the following topics:

[Connector Xpress Overview](#) (see page 11)

[Communication with Other Components](#) (see page 12)

[Supported Databases and Directories](#) (see page 13)

[Data Sources](#) (see page 13)

[Password Caching](#) (see page 14)

[Connector Xpress Window](#) (see page 15)

[Where Connector Xpress Stores User Preferences](#) (see page 19)

Connector Xpress Overview

Connector Xpress is a Identity Management utility for managing dynamic connectors, mapping dynamic connectors to endpoints, and establishing routing rules for endpoints. You can use it to configure dynamic connectors to allow provisioning and management of SQL databases and LDAP directories.

Connector Xpress lets you create and deploy custom connectors without extensive technical expertise.

You can also set up, edit, and remove a connector server configuration using Connector Xpress.

The primary input into Connector Xpress is the native schema of an endpoint system. For example, you can use Connector Xpress to connect to an RDBMS and retrieve the SQL schema of the database. You can then use Connector Xpress to construct mappings from those parts of the native schema that are relevant to identity management and provisioning. A mapping describes how the provisioning layer represents an element of the native schema.

Connector Xpress generates metadata that describes, to a dynamic connector, the runtime mappings to a target system.

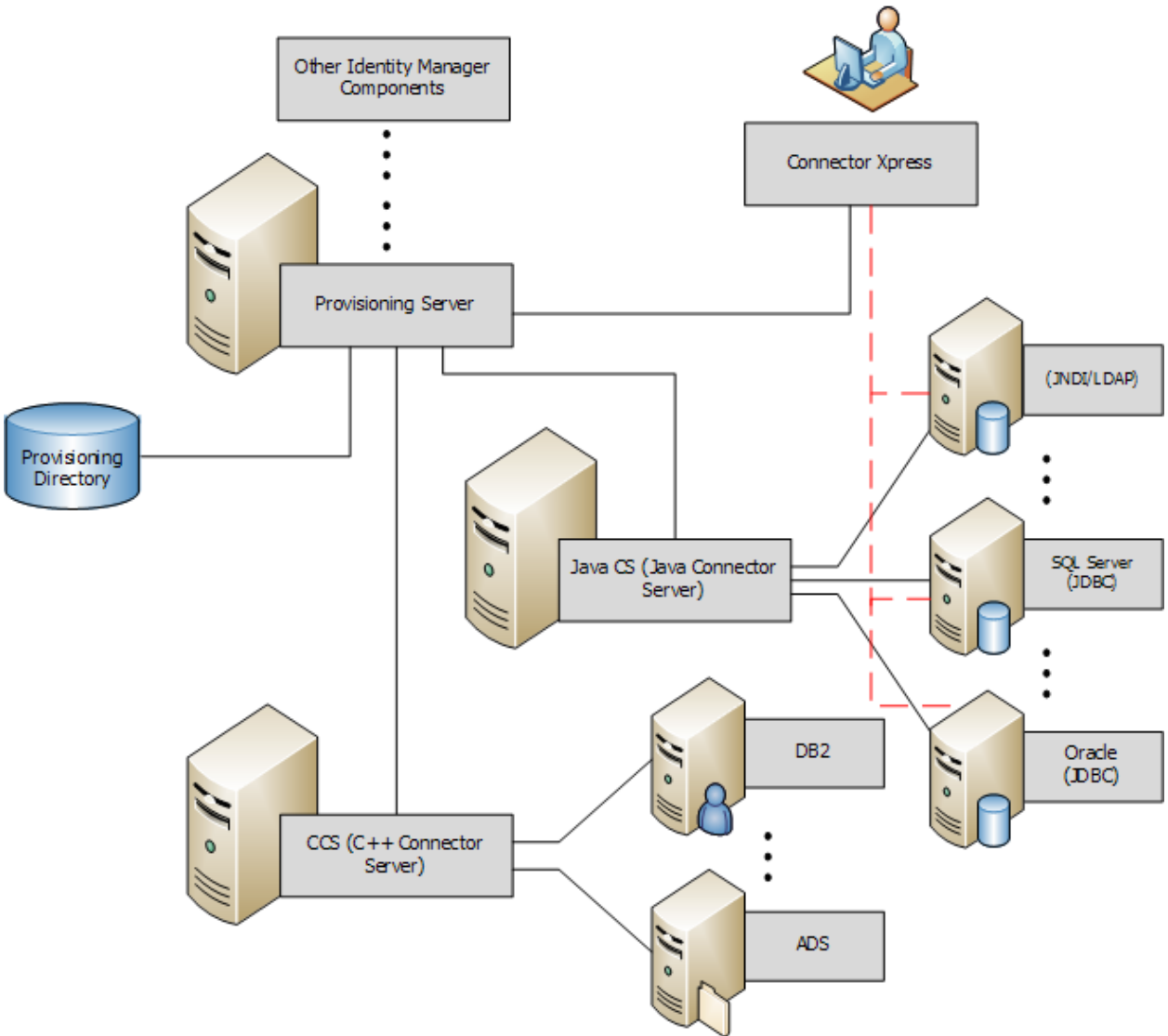
The output of Connector Xpress is a metadata document produced when you complete your mappings. The metadata is an XML file that describes the structure of your connector to the CA IAM CS.

The output describes the provisioning server classes and attributes and how they are mapped to the native schema.

The metadata is used to create dynamic endpoint types that you can manage with Identity Management.

Communication with Other Components

The following diagram shows the direct and indirect communications between Connector Xpress and other components in the distributed system:



Note: The dashed red lines indicate that the direct communications between Connector Xpress and endpoints are read-only. These direct communications occur when setting up data sources.

Supported Databases and Directories

To see the list of directories and databases that Connector Xpress supports, see the [Platform Support Matrix](#). Look for the table named CERTIFIED CONNECTOR XPRESS ENDPOINT TYPES.

Data Sources

A data source is a reference to a server or other source of schema information that Connector Xpress can construct a connector for.

Connector Xpress supports the following data sources from supported vendors:

- **JDBC**—Any service accessible through the JDBC API, typically a relational database server.
- **JNDI**—Any service accessible through the JNDI API, typically an LDAP server.

Set Up Data Sources

A data source is a reference to a server or other source of schema information that Connector Xpress can construct a connector for.

Connector Xpress supports the following data sources from supported vendors:

- **JDBC**—Any service accessible through the JDBC API, typically a relational database server.
- **JNDI**—Any service accessible through the JNDI API, typically an LDAP server.

You can connect to a data source to read its schema and then use Connector Xpress to map the schema to a new endpoint type. Connector Xpress maintains a list of data sources that you configure. You can set up JNDI or JDBC data sources.

Note: When you create a Connector Xpress project, Connector Xpress prompts you to set up your data sources.

Follow these steps:

1. Click Tools, Data Sources.
The Select Data Source for new Project dialog appears.
2. Click Add.
The Source Types dialog appears.
3. Select an available data source type from the list, then click OK.
The Edit Source dialog appears, specific to the type of data source you are adding.
4. Complete the fields on the dialog, then click Test to verify your settings and authentication details.
Depending on the authentication method chosen, a subsequent authentication dialog can appear.
Complete the fields on this dialog to continue the test.
5. When the test has completed successfully, click OK.
You have successfully configured the data source type you selected.

Password Caching

Connector Xpress caches the passwords used with each Provisioning Server only when the application is open. When the application is closed, Connector Xpress does not permanently record passwords. When Connector Xpress needs a password, and the password is not cached, or the cached password causes a failed authentication attempt, Connector Xpress prompts you to enter the password.

Connector Xpress Window

The Connector Xpress window contains the following three panes:

Mapping tree

Displays an overview of the mappings you made for your endpoint. Each node and child node represents an aspect of your endpoint mapping. For example, attributes you have mapped, associations between classes, and operation bindings for your endpoint. Clicking a node displays a dialog that allows you to edit the parameters of the node.

Editor panel

Displays a dialog that lets you edit the parameters for the node you have selected.

Provisioning Servers tree

Displays the endpoints and connectors of multiple Provisioning Servers.

Mapping Tree

The Mapping Tree lets you define the mappings, associations, and operation bindings for your connector. The mapping tree contains the following nodes:

Endpoint type node

Lets you create a description of your endpoint.

Classes parent node

Lets you map a new class and view a read-only list of the classes that you have mapped and the native classes they are mapped to.

Class node

Lets you specify the JDBC database tables or the JNDI native object classes that you want map a class to.

Attributes parent node

Lets you map provisioning attributes to the JDBC database table columns or JNDI object class attributes of the endpoint.

Attributes node

Lets you configure extended details of the selected attribute.

Account screens node

Lets you arrange the attributes you have mapped into the groups and subgroups that you want to appear as tabs and pages in the Identity Management User Console account screens.

Associations parent node

Lets you specify the classes you want to create direct and indirect associations between.

Containers parent node

Lets you specify which object classes you want to use as containers in your connector.

Custom Types

Lets you define arbitrary strings (flexi-strings) you want to use as metadata types in attribute mappings.

Operation Bindings

Lets you specify operation binding information and display a summary of existing operation bindings.

Scripts parent node

Lets you name the script you want to bind to the operation bindings you have mapped.

Scripts node

Lets you specify the parameters of the script you want to bind to the operation bindings you have mapped.

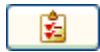
Provisioning Servers Tree

The Provisioning Servers tree (in the lower left pane) lets you manage the endpoints and connectors of multiple Provisioning Servers. The Provisioning Servers tree contains the following fields:



Refreshes the currently selected node in the Provisioning Tree.

Note: The Refresh button is only available when you select a tree node that has a changeable list of child nodes. For example, the button is not available for a particular endpoint, as this type of node always has Policies and Endpoint child nodes only. For the endpoints node of a particular endpoint, the button is available.



Displays the actions you can perform on the currently selected object in the Provisioning Tree. Clicking this button is equivalent to right-clicking the currently selected object in the Provisioning Tree.

Provisioning Servers node

Lets you add and configure Provisioning Server connection details. When you add a Provisioning Server, Connector Xpress maintains the details of the Provisioning Server so that you can access it each time you run Connector Xpress.

Servers Object node

Displays each registered Provisioning Server on the network. You can use this node to edit or remove the Provisioning Server connection details.

Domains Node

Displays the domain configured for the Provisioning Server.

Endpoint Types node

Displays a list of endpoint types. You can use this node to create an endpoint type.

Endpoints Object node

Lets you do the following:

- Deploy and edit metadata
- Delete an endpoint type
- Clean an endpoint type for DYN endpoint types
- Set the managing connector server for non-DYN endpoint types only

Endpoints node

Groups endpoints of a particular endpoint type.

Endpoints Name node

Displays an endpoint that you have acquired on the Provisioning Server. You can use this node to:

- Perform an explore or correlate of the endpoint for DYN endpoints
- Delete an endpoint
- Set the managing connector server only for non-DYN endpoints

Policies node

Displays groups of policies of a particular endpoint type.

Note: A default policy is provided for all endpoint types.

CS Config Object node

Displays a list of CS configurations.

You can use this node to:

- Edit the existing configuration for the server's branch DN routing rules
- Delete a configuration entry
- Set the managing connector server password

CS Configs node

Displays logical groupings of CA IAM CS configurations. These configurations contain the DSFConfig style routing rules for managing branch DNs. You can use this node to add a new routing rules configuration object for a C++ Connector Server or CA IAM CS service.

Connector Servers Node

Displays the endpoint types, endpoints, and the dynamic endpoint types that the selected Connector Server manages.

Where Connector Xpress Stores User Preferences

Connector Xpress stores user preferences through the Java Preferences API.

On Windows, this stores data in the following registry key:

HKEY_CURRENT_USER\Software\JavaSoft\Prefs

On UNIX, this stores data in the user's home directory under the .java/.userPrefs folder.

Note: The uninstaller does not remove this data, so subsequent installs preserve user preferences.

Chapter 2: Installing Connector Xpress

The following sections describe how to install Connector Xpress.

This section contains the following topics:

[Install Connector Xpress](#) (see page 21)

[Configure Connector Xpress for CA CloudMinder](#) (see page 22)

[Set Up TLS/SSL for a JNDI Data Source](#) (see page 23)

[Install Connector Xpress Silently](#) (see page 24)

[Uninstall Connector Xpress Silently](#) (see page 25)

[Where User Preferences Are Stored](#) (see page 25)

[Set Preferences](#) (see page 26)

[Where Settings Are Stored](#) (see page 26)

[Configure the CA IAM CS Host to Communicate with Standalone CA IAM CS](#) (see page 26)

[Provide License Files for Sybase and UDB for z/OS to Connector Xpress](#) (see page 27)

Install Connector Xpress

You do not need to install Connector Xpress on the same computer as CA IAM CS or any other server component, including the Provisioning Server.

Important! We recommend that you disable all antivirus software before installing CA IAM CS, CA IAM CS SDK, and Connector Xpress.

Follow these steps:

1. Locate the Identity Management installation download or other media.
2. Extract the product files (ZIP or TAR).
3. Navigate to the following subfolder and double-click the setup file.
Provisioning\ConnectorXpress
4. Follow the onscreen instructions to complete the installation.

Configure Connector Xpress for CA CloudMinder

Before you can use Connector Xpress create a connector, verify the prerequisites before setting up your system for CA CloudMinder. .

Follow these steps:

1. Start Connector Xpress, then follow these steps:
 - a. Right-click Provisioning Servers in the right pane, then select Add Remote Server.
 - b. In the Provisioning Server Details screen, specify the LDAP bind host and port for an *on-premise connector server*. Do not specify the host name and port for a Provisioning Server.
 - c. If you added a certificate to Connector Xpress previously, select Use TLS.
If you have not added a certificate yet, clear the Use TLS check box. Connector Xpress resets the port automatically.
 - d. Complete additional fields as needed, then click OK.
Do not enter a value in the Tenant ID field.
2. If the Provisioning Server does not have a Connector Server configured, do the following tasks:
 - a. [Create a Connector Server configuration](#) (see page 76).
 - b. [Set a managing Connector Server](#) (see page 76) for the endpoint.
The configuration determines how your Provisioning Server routes individual endpoints to Connector Servers.
3. Enable the following roles:
 - Endpoint Manager
 - Provisioning Role Manager
 - Provisioning Role Membership Approver
 - Provisioning Synchronization Manager
4. Set up the workflow for the task CreateEndpointTypeEvent:
 - a. Map the SingleStepApproval workflow process.
 - b. Set the approval task to Approve Endpoint Type Modification.
 - c. Continue as for normal workflow setup.
5. Repeat Step 4 for ModifyEndpointTypeEvent task.
6. Repeat Step 4 for DeleteEndpointTypeEvent task.

Note: CA CloudMinder includes notification email templates for the Create and Delete tasks. To see them, click System, Emails and search for *endpoint type*.

There are two ports (non tls (ssl) and ssl) that a client can use to communicate with the standalone CA IAM CS. To allow the Connector Xpress to access the standalone CA IAM CS, configure the firewall on your CA IAM CS server host to allow communication on these ports.

Set Up TLS/SSL for a JNDI Data Source

In Connector Xpress, you can define a JNDI data source as TLS/SSL enabled.

If a JNDI data source is TLS/SSL enabled, import the JNDI data source certificate into the Connector Xpress trusted certificate store.

Follow these steps:

1. Create a PEM file for each issuer in the target certificate's chain.
2. For each file enter the following command:

```
keytool -import -trustcacerts -keystore  
"conxp-home/conf/ssl.keystore" -file trusted-certificate.pem
```

The JNDI Data Source certificate is imported into the ssl.keystore

Repeat this command for each PEM file.

3. Restart Connector Xpress.
4. Test the TLS/SSL connection in Connector Xpress.

Install Connector Xpress Silently

Connector Xpress supports a silent mode of installation. To run a silent install, it is necessary to create a response file.

Follow these steps:

1. In a command window, navigate to where you extracted the Connector Xpress files, then to the following subfolder:

Provisioning/ConnectorXpress

2. Do either of the following depending on whether you want to install the component as you create the response file, or whether you want to create a response file template to use with a silent install at a later time:

- To create a response file and install the component at the same time, enter the following command and then run through the installation:

```
setup -options-record install_response_file
```

- To create a response file, but not install the component, enter the following command and then enter the required values in the template:

```
setup -options-template install_response_file
```

Note: Use fully qualified path names when generating and running response files. For example, responsefile.txt is not valid but C:\responsefile.txt is valid.

3. Start the silent installation using the following command:

```
setup -options install_response_file -silent
```

Uninstall Connector Xpress Silently

Connector Xpress supports a silent mode of uninstallation. To run a silent uninstall you must create a response file.

Follow these steps:

1. In a command window, navigate to the uninstall directory which is one of the following:

- Windows

`C:\Program Files\CA\Identity Manager\Connector Xpress_uninst`

- UNIX

`/opt/CA/IdentityManager/ConnectorXpress/_uninst`

2. Do one of the following depending on whether you want to uninstall the component as you create the response file, or whether you want to create a response file template to use with a silent uninstall at a later time.

- To create a response file and uninstall the component at the same time, enter the following command and then run through the uninstallation:

```
uninstaller -options-record uninstall_response_file
```

- To create a response file, but not install the component, enter the following command and then enter the required values in the template:

```
uninstaller -options-template uninstall_response_file
```

Note: Use fully qualified path names when generating and running response files. For example, `responsefile.txt` is not valid but `C:\responsefile.txt` is valid.

3. Start the silent installation using the following command:

```
uninstaller -options uninstall_response_file -silent
```

Where User Preferences Are Stored

Connector Xpress stores user preferences through the Java Preferences API.

On Windows, Java Preferences API stores data in the following registry key:

```
HKEY_CURRENT_USER\Software\JavaSoft\Prefs
```

On UNIX, Java Preferences API stores data in the users home directory under the following folder:

```
.java/.userPrefs
```

Note: The uninstaller does not remove this data, so subsequent installs preserve user preferences.

Set Preferences

You can change various aspects of the way Connector Xpress looks and behaves, such as its look and feel, search limits, and command parameters.

Follow these steps:

1. Click Tools, Preferences.
The Connector Xpress Preference dialog appears.
2. Complete the fields on the dialog, then click OK.
Connector Xpress applies and saves your preferences.

More Information:

[Preferences Dialog](#) (see page 160)

Where Settings Are Stored

Settings are stored using the Java Preferences API. The API stores the values in the registry on Windows and in a file under the user's home directory on Solaris.

On Windows, the value is stored in the following registry key:

```
HKEY_CURRENT_USER\Software\JavaSoft\Prefs\com\ca\iam\conman
```

Configure the CA IAM CS Host to Communicate with Standalone CA IAM CS

There are two ports (non tls (ssl) and ssl) that a client can use to communicate with the standalone CA IAM CS. To allow the Connector Server Manager or Connector Xpress to access the standalone CA IAM CS, configure the firewall on your CA IAM CS server host to allow communication on these ports.

Provide License Files for Sybase and UDB for z/OS to Connector Xpress

The Sybase and DB2 for z/OS connectors both use JDBC, and they both require a license file to connect to the endpoints.

The following sections in the Installation Guide describe how to set up these license files:

- Set Up License Files for the DB2 for z/OS Connector
- Set Up License Files for the Sybase Connector

Chapter 3: Creating Connectors

This section contains the following topics:

[Projects](#) (see page 29)

[Multitable Support for JDBC Connectors](#) (see page 37)

[Managing Accounts and Groups](#) (see page 41)

[Operation Bindings](#) (see page 59)

[Pure Scripted Connectors](#) (see page 67)

[Promote a Connector from a Test to a Production Environment Example](#) (see page 69)

[Mapping Custom Attributes for New Mainframe Connectors](#) (see page 70)

Projects

Connector Xpress lets you create projects that specify how connectors are configured and deployed to the Provisioning Server.

A project represents a connector in Connector Xpress. A project includes:

- The schema retrieved from a data source.
- The configuration of metadata that describes how Connector Xpress maps the schema to the endpoint.

You can save, edit, and reopen projects for later use.

You can also create projects based on existing metadata, then modify the class mappings and operation bindings and then redeploy the connector back to the endpoint.

How you Create a Connector Xpress Project

You can create a project using the following methods:

- [Create a project specifying a JNDI or JDBC data source](#) (see page 32)
 This lets you create projects that specify how connectors are configured and deployed to the Provisioning Server.
- Create a project without specifying a data source
 This allows you to [use Connector Xpress as a generic metadata editor](#) (see page 96) and create new attributes.
- [Create a project based on a template](#) (see page 33)
 This lets you use templates as starting points for mapping common endpoint schemas.
- [Create a project based on a template using wizard mode](#) (see page 34)
 The wizard helps you start a new project based on a template, and steps you through the basic process of mapping an account and group class.

Templates

You can use a template as a starting point for mapping common endpoint schemas. For example, starting a project with a template is useful for LDAP, where standards such as RFCs define widely used schemas, and purely custom schemas are less common. Templates also include information that Identity Management uses to render account management screens.

The following table highlights some of the more commonly used templates. For a full list of all templates, select Project, Create New from Template in Connector Xpress, then click on each template for a brief description.

Important! To help ensure correct performance, we recommend that you use the vendor-specific template supplied with Connector Xpress as a starting point when you create a mapping for a specific vendor.

Project Name Setting	Endpoint type	Description	Metadata File Name
JNDI NIS NetGroup	JNDI	For use with LDAP endpoints supporting NIS Netgroup Schema. This template demonstrates advanced association handling.	jndi_assoc_nisnetgroup_metadata
JNDI inetOrgPerson (Common)	JNDI	LDAP inetOrgPerson. This template should be used when no vendor-specific template is required.	jndi_inetorgperson_common_metadata

Project Name Setting	Endpoint type	Description	Metadata File Name
Lotus Notes Domino	JNDI	Lotus Notes Domino Server. This template allows easy mapping of eTLNDCustomAttribute* and eTLNDCustomCapabilityAttribute* attributes (the latter set are relevant for account template synchronization).	Ind_metadata
SDK DYN Compound	Any	Like SDKDYN but demonstrates use of Compound Values. This template uses compound values which allow complex data to be represented as a single string in JSON syntax, for instance '{"attr1": 42, "attr2": ["a", "b"], attr3: { "objName" : "jack" } }' represents a top level object with three attributes, the first is an integer (42), the next is an array of strings and the last a nested object.	sdkcompound_metadata
SDK DYN	Any	Software Development Kit demo connector. This template is a flat (i.e. non-hierarchical) case-sensitive connector that uses the recommended eTDYN* schema to save provisioning information to local files on the CA IAM CS host computer. Because it is flat, its containers are Virtual Containers not actually stored on the endpoint.	sdkdyn_metadata
SDK DYN Script	Any	Like SDKDYN but implemented in Java Script. This template demonstrates how to implement an entire connector (all operation bindings) in JavaScript, as well as configuration information usually found in a connector.xml file, using the connectorXML metadata setting on the top-level namespace.	sdkscrip_metadata
SDK DYN UPO Script	Any	Like SDK DYN Script but sends emails rather than writing to local files. This connector has similar functionality to the deprecated C++ UPO connector except that it sends emails rather than writing information to local files.	sdkuposcrip_metadata

Template Locations

All template files are stored in the *Connector Xpress install directory/conf/templates*.

Connector Xpress searches this directory recursively to find all applicable templates.

Create a Project

To create a connector, you can create projects that specify how connectors are configured and deployed to the Provisioning Server.

Follow these steps:

1. Click Project, New.

The Select Data Source for new Project dialog appears.

2. If the data source you want to use is displayed in the list, then go to step 4.
3. If the data source you want to use is not displayed in the list, do the following:

- a. Click Add.

The Source Types dialog appears.

- b. Select an available data source type from the list, then click OK.

The Edit Source dialog appears, specific to the type of data source you are adding.

- c. Complete the fields on the dialog to configure the data source type you selected, then click OK.

The Select Data Source for new Project dialog appears and the data source you added appears in the list.

4. Select the data source you want to use from the list, then click OK.

The Enter Password for Data Source Dialog appears.

5. Enter the password for the selected data source, then click OK.

Connector Xpress does the following:

- Displays a Mapping Tree containing a top-level Endpoint Type node.
- Creates a class named User Account by default in the Mapping Tree.
- Displays the [Endpoint Type Details](#) (see page 134) dialog.

6. Create a mapping to create the appropriate endpoint data.
7. Click Project, Save, or Save As.
The Save Project As dialog appears.
8. Specify the folder to save the connector project in, the file name and the file type for the saved connector, and click Save.

Connector Xpress saves the project.

Note: We recommend that you use the default file extension (.con) and that you keep a copy of the project. You cannot view the stored procedure bindings after you deploy a connector, unless you open the Connector Xpress project file where your bindings are stored.

More Information:

[Select Data Source for new project Dialog](#) (see page 165)

[Source Types Dialog](#) (see page 166)

[Projects](#) (see page 29)

Create a Project Using a Template

You can start a new project using a template as a starting point for mapping common endpoint schemas.

Follow these steps:

1. On the Project menu, click Create New from Template.
The [Select Template dialog](#) (see page 166) appears.
2. Select the [template](#) (see page 30) you want to use as a basis for your project.
The Select Data Source for a new project dialog appears.
3. Complete the details on the Select Data Source for a new project dialog, then click OK.
The [Endpoint Type Details](#) (see page 134) dialog appears.
4. Complete your attribute mappings as required.
5. [Save the project](#) (see page 37).

Wizard Mode

You can also start a project by opening a template in wizard mode. When you start a project using the wizard, the wizard steps you through the basic process of mapping an account class, or an account class and group class, depending on the template you selected. You can use the wizard to start a project, and then use the other dialogs to complete your mappings.

The wizard prompts you to complete the following mapping details:

1. The endpoint type name and description.
2. The native classes for the account mapping.
3. The mappings for account attributes.
4. For templates projects that contain a group class, the wizard prompts you to complete the following mappings:
 - a. The native classes for the group mappings.
 - b. The mappings for group attributes.
 - c. The association between the account class and the group class.

Create a Project Using the Wizard

You can use the wizard to complete the basic details of a mapping, such as mappings for account and group attributes. You can use the wizard to start a project, and then use the other dialogs to complete your mappings.

Follow these steps:

1. On the Project menu, click Create New from Template.
The Select template dialog appears.
2. Select the [template](#) (see page 30) you want to use as a basis for your project.
3. Click Open in Wizard Mode.
The Select Data Source for a new project dialog appears.
4. Complete the details on the Select Data Source for a new project dialog, then click OK.
The Endpoint Type Details dialog appears.
5. Follow the prompts in the wizard and complete your mappings as required.
Note: While the wizard is active, the mapping tree is read-only. As you step through the wizard, the relevant node in the mapping tree is expanded and highlighted.
6. Review the mapping summary, then click Finish.
7. Complete your attribute mappings as required.

Projects Based on Existing Metadata

You can create a project based on the contents of eTMetadata and eToperation binding set for both dynamic and static connectors. Creating a project based on existing metadata allows you to:

- Review or modify the class mappings and operation bindings for a connector type in Connector Xpress.
- Deploy the changes back to the endpoint.

Creating a project based on existing metadata is useful when:

- The original project file that was used for creating the connector is no longer available.
- A project file for the connector does not exist, for example, for static connector types.
- A project file that reflects the latest changes for the connector type is required.

Create a Project Based on Existing Metadata

To review or modify the class mappings and operation bindings for a static or dynamic connector where the original project for the connector does not exist, you can create a project based on existing metadata.

Follow these steps:

1. In the Provisioning Servers tree, right click the endpoint that you want to base a project on, then click Create Project.

The progress dialog appears. If you selected a dynamic connector, Connector Xpress displays the Select Data Source for New project dialog.

2. If prompted, select a data source for your project, then click OK.

Connector Xpress creates the project and populates the mapping tree with the metadata.

3. Map the native attributes in the Account Class to the relevant provisioning attributes.
4. [Save the Connector Xpress project.](#) (see page 37)
5. [Redeploy the metadata if necessary.](#) (see page 94)

Open an Existing Project

To open an existing project, click Project, Open, and double-click the file you want to open from the Open Project dialog.

Connector Xpress opens the project and displays the mappings in your project in the Mapping Tree of the Connector Xpress window.

Reopen a Recent Project

To reopen a recent project, click Project, Open Recent, and select the project you want to open.

Connector Xpress opens the project and displays the mappings in your project in the Mapping Tree of the Connector Xpress window.

Edit a Project

To change the details of a project, you can open a saved project and edit the metadata as required.

Follow these steps:

1. [Open an existing project](#) (see page 36).
The Select Data Source for new project dialog appears.
2. Complete the details on the dialog, then click OK.
Connector Xpress opens the project, and displays the metadata in the mapping tree of the Connector Xpress window.
The Enter Password for Data Source dialog appears.
3. Complete the fields on the dialog, then click OK.
4. Edit the metadata as required.
5. [Save the connector.](#) (see page 37)
6. Deploy the connector if necessary.

More Information:

[Enter Password for Data Source Dialog](#) (see page 133)
[Projects](#) (see page 29)

Save a Project

After you have created a new dynamic connector, you can save the connector project for future deployment.

Follow these steps:

1. Click Project, Save, or Save As.

The Save Project As dialog appears.

2. Specify the folder to save the connector project in, the file name and the file type for the saved connector, and click Save.

Connector Xpress saves the project.

Note: We recommend that you use the default file extension (.con) and that you keep a copy of the project. You cannot view the stored procedure bindings after you deploy a connector, unless you open the Connector Xpress project file where your bindings are stored.

More Information:

[Projects](#) (see page 29)

Multitable Support for JDBC Connectors

A compound class is an unmanaged class that you can use as the data type of an attribute.

To provide support for multitable JDBC Connectors, you map an unmanaged class to an endpoint object and use the compound class as a new data type for an account class attribute.

This means that values from multiple columns from a table, rather than from a single column, can populate a single attribute value.

You can map compound classes like normal classes, except that a naming attribute is not required.

Note: For more information about compound types, see the *Connector Programming Guide*.

Compound Class for Multitable Support Example

This example shows you how to create a simple connector named `My_MultiTable_Connector` that combines two database tables into the user account class.

This example uses a schema named `Multi_Table` schema that contains an `Employees` table and an `Address` table.

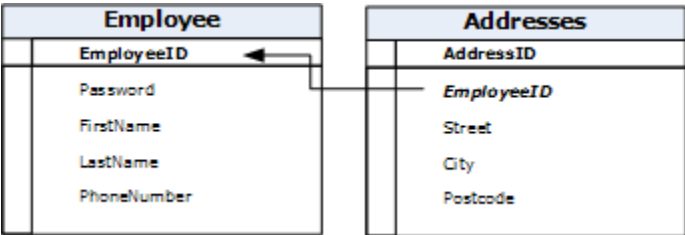
The `Employees` table is the main table for employee records. The table uses `EmployeeID` as its primary key as shown in the following diagram:

Employee	
EmployeeID	
Password	
FirstName	
LastName	
PhoneNumber	

The `Addresses` table is a separate table of addresses that uses `EmployeeID` as a foreign key as shown in the following diagram:

Addresses	
AddressID	
EmployeeID	
Street	
City	
Postcode	

The following diagram shows the relationship between the tables:



Example: Create a compound class for multitable support

This example combines the Employees table and Addresses table in the Multi_Table schema. Once combined, the attributes in both tables are jointly accessible from an endpoint account in the User Console account management screens.

1. Create a JDBC project named My_MultiTable_Connector and specify the JDBC data source that you want to use.
2. In the mapping tree, click the User Account class node.

The [Map Class dialog](#) (see page 145) appears.

3. Select the Multi_Table schema from the Schema drop-down list, then select the Employees table from the Table drop-down list.
4. Map the columns in the Employees table to the attributes in the Name column.
5. Click the Custom Types node.

The Custom Types dialog appears.

6. Under Compound Type classes, click Add, then type the name of the new class, for example, Address, in the table.

Connector Xpress creates a compound class called Address and adds it to the mapping tree. Connector Xpress sets the Address compound class to Unmanaged by default.

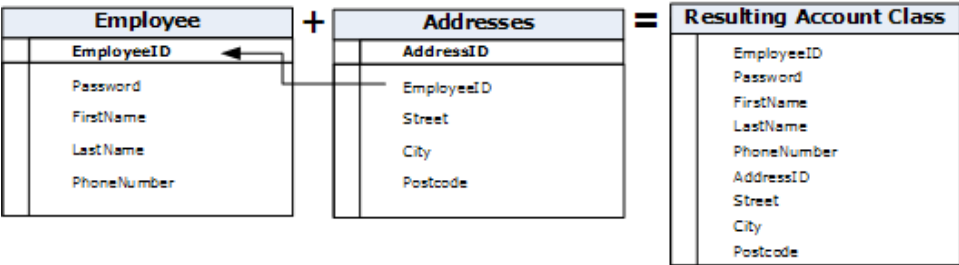
Connector Xpress creates an account attribute named Addresses, adds it to the mapping tree, and selects the multivalued attribute check box on the Attribute details dialog. Connector Xpress also creates a direct association from the Address class to the User Account class and adds a node named *with User Account* to the Mapping tree. The Addresses attribute and direct association incorporates the Address compound class into the User Account class.

Note: The Address class has the *is compound value* metadata flag set to true on the Map Compound Class and Attributes dialog. This flag specifies that the class is a compound class.

7. In the Mapping tree, click the Address class node.
The [Map Compound Class and Attributes](#) (see page 146) dialog appears.
8. Select the Multi_Table schema from the Schema drop-down list, then select the Address table from the Table drop-down list.
9. Map the columns in the Addresses table to the attributes in the Name column.
Note: Set the numeric fields in a compound class to Sting in the metadata. Compound classes do not support the rule string template when a field is set to Numeric.
10. Click the With User Account node under the Address node.
The [Direct Association with User Account](#) (see page 125) dialog appears.
11. In the Address Attribute field, select Employee ID.
Connector Xpress matches this attribute with the User Account naming attribute.
Note: The Employee ID attribute in the Address class serves as the association attribute. The attribute has an association type metadata property (Assoc Type=COMPOUND_PARENT) set that defines it as the attribute linking this compound class to its parent class. To display this property on the Attribute Detail dialog, [display the extended metadata properties](#). (see page 97)
12. Under the User Account node, click the Attributes node.
The Attributes Summary dialog appears.
13. Group the mapped attributes into the groups and subgroups that you want to appear as tabs and page sections in the Identity Management User Console account management screens by creating the presentation metadata in Connector Xpress.
14. Save your project and deploy the new connector.
15. Generate Identity Management User Console Account Screens.

Example: Results of combining the Employees and Addresses table

The following diagram shows the results of combining the Employees table and Addresses table:



Example: Generated account screens

This example shows an account management screen after you import the My_MultiTable_Connector-RoleDef.Xml file into Identity Management:

The screenshot shows a web interface with three tabs: 'Account', 'User', and 'Contact'. The 'Contact' tab is selected. Below the tabs is a section titled 'Address'. Inside this section, there is a table with the following data:

Name	City	Post Code	Street	
Home	Fitzroy	3065	Argyle	⊖
Work	Melbourne	3004	St. Kilda	⊖

Below the table is an 'Add' button. The label 'Addresses' is positioned to the left of the table.

Managing Accounts and Groups

In earlier releases of Connector Xpress mapping a group object type implicitly created the association between groups and accounts. However, in this release of Connector Xpress, you have fine-grained control over the associations between accounts and groups on the endpoint system. To define groups and define group membership, you explicitly create associations between classes. You can create direct, reverse, or indirect associations. Creating an association between classes defines the class as a group class.

For JNDI connectors, the group class member attribute is hardwired to contain values of type DN (Distinguished Name). Values of this type are expressed relative to the root of the endpoint directory and enumerate the accounts belonging to each group.

The member attribute for the group class is virtual, meaning that its value is expensive to retrieve, as it has to be computed from group.member rather than being directly looked up. We therefore recommend that you request it with caution.

Some JNDI vendors, notably Novell eDirectory, actually expose the account.memberOf attribute in their schema. However to guarantee consistent behavior across all vendors, you are prohibited from mapping it explicitly. Instead, CA IAM CS implements it as a virtual attribute.

Mappings

Mappings consist of the following:

- One or more **class mappings**—Each class mapping describes a single class of provisioning objects in the Provisioning Server's DIT. For JDBC, a class mapping maps to a single database table. For LDAP, a class mapping can map to multiple native LDAP object classes. Account class mappings have some special handling because they are important to Provisioning Server operations like policy syncing.
- Multiple **attribute mappings**—Each class mapping can have multiple attribute mappings, which map individual values in the Provisioning Server's provisioning objects to single values in objects on the managed endpoint system.

Multi-attribute Mappings

Connector Xpress supports multi-attribute (many-to-one) mappings, which means you can map a native attribute to multiple provisioning attributes. The [LDAP DYN template](#) (see page 30) contains an example of multi-attribute mapping. In the template, the account class has both Common Name and Account ID mapped to the endpoint's *cn* attribute. This is useful because the Common Name is a common LDAP attribute that you should include in the account object and Account ID is the provisioning naming attribute required by the Identity Management common attribute set.

Also, the Account ID and *uid* are both ambiguously mapped to the endpoint's *uid* attribute in the template.

Duplicate mappings to a native attribute within the same class are not allowed. For example, if *cn* is mapped you cannot map *cn* again. However you can map *cn* again as part of an *ambiguous* mapping. For example, together with *uid* as shown in the LDAP DYN template.

Note the multi-mapping of *accountname*, *cn*, *uid*, and a separate mapping directly to *cn* is required to fully manage JNDI endpoints. This allows either *cn* or *uid* to be used in the naming attribute, and satisfies the condition where *cn* is also required on an endpoint even when *uid* is used as the naming attribute.

Map Multi-attributes to the Same Native Attribute

Because JNDI endpoints can contain accounts named using *cn* or *uid* attributes, we recommend that you do the following:

- Map Account ID to both *cn* and *uid* attributes
- Provide single unambiguous mappings to *cn* and *uid* to manage such endpoints.

Follow these steps:

1. On the Project menu, click New.
Connector Xpress automatically creates a user account provisioning class node in the Mapping tree when you create a project.
The Select Data Source for new project dialog appears.
2. Select the data source you want to use for the project.
The Endpoint Types dialog appears.
3. On the Endpoint Type Details dialog, specify a name, description, and version for your connector.
Note: These fields are for descriptive purposes only.
4. In the Mapping Tree, click the Map Attributes dialog.
The Map Attributes dialog appears.
5. In the Maps To column, click the edit button for the provisioning attribute you want to map to.
The Attribute list appears.
6. Select the native attribute you want to map to.
7. In the Maps To column, click the edit button for the next provisioning attribute you want to map to.
The Attribute list appears.
8. Select the same native attribute as you selected in step 5.
9. [Save the project.](#) (see page 37)

Map Ambiguous Attributes

To support ambiguous (one-to-many) mappings, you can map one provisioning attribute to multiple native attributes.

Follow these steps:

1. On the Project menu, click New.
Connector Xpress automatically creates a user account provisioning class node in the Mapping tree when you create a project.
The Select Data Source for new project dialog appears.
2. Select the data source you want to use for the project.
The Endpoint Types dialog appears.
3. On the Endpoint Type Details dialog, specify a name, description, and version for your connector.
Note: These fields are for descriptive purposes only.
4. In the Mapping Tree, click the Map Attributes dialog.
The Map Attributes dialog appears.
5. In the Maps To column, click the edit button for the provisioning attribute you want to map to.
The Attribute list appears.
6. In the Attribute list, Ctrl+click or Shift+click to select the multiple native attributes that you want to map to.
7. [Save the project.](#) (see page 37)

Types of Associations

You can create the following types of associations in Connector Xpress:

- (JNDI and JDBC) Direct association
- (JNDI and JDBC) Reverse association
Note: Reverse associations are not supported for associations between compound classes and user account classes when creating multitable support JDBC connectors.
- (JDBC only) Indirect association

Direct Associations

A *direct* association is an association between any two classes of objects where the association values are stored on one of the objects directly.

A direct association can be in the forward direction, that is, from group to account, and in the reverse direction, that is, from account to group. Creating a direct association in the forward direction lets you manage the accounts that belong to a group from the group side of the association. Creating a direct association in the reverse direction, that is a [reverse association](#) (see page 46), lets you manage the association from the account side of the relationship.

Direct associations in the forward direction coincide with the natural representation of the associative information about the endpoint objects, that is, where the group stores account members. Direct associations in the reverse direction are the reverse of this representation, as they define groups to which an account belongs, even if the native system does not store such information.

Typically, it is common to establish both directions of an association at the same time, that is, both the direct and reverse associations. You can use the [Direct Association](#) (see page 125) dialog to create and edit both associations at the same time.

In a direct association, a group directly stores the directory-relative DNs of the accounts which belong to it. Therefore you create a direct association between classes when you map `groupOfNames.member` to `inetOrgPerson.cn`.

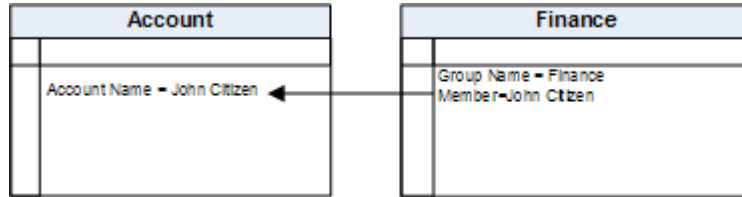
Note: Both of these objectclasses are part of the `inetOrgPerson` schema. They differ only in minor implementation details on the endpoint, that is, `groupOfUniqueNames` stores its members as a set rather than a list helping ensure that the associated entries are unique.

In direct associations, references are persisted directly into a multivalued attribute on the endpoint. For example, in LDAP, a group's `member` attribute directly stores reference to the accounts it contains.

When creating associations between classes for JDBC connectors, we recommend that you use direct associations for one to one, and one to many relationships. For many to many relationships (for example, the relationship between Account's `memberOf` and Group's `members`), use an indirect association instead of a direct association.

Example: Direct Association

The following example shows a direct association that has been mapped between an account class and a finance class. The finance class stores the accounts that belong to it in its member attribute.



Reverse Associations

A reverse association is a direct association between two classes of objects of the type *from Class1 to Class 2* (the direct association) and *from Class 2 to Class 1* (the reverse association). Reverse associations are by definition bi-directional.

Typically, most endpoints only let you manage only one side of the association between accounts and groups from the group side of the association. For example, you can manage the accounts that belong to a group from the group side of the association. Creating a reverse association lets you provision and manage which groups an account is a member of, from the account side of the association.

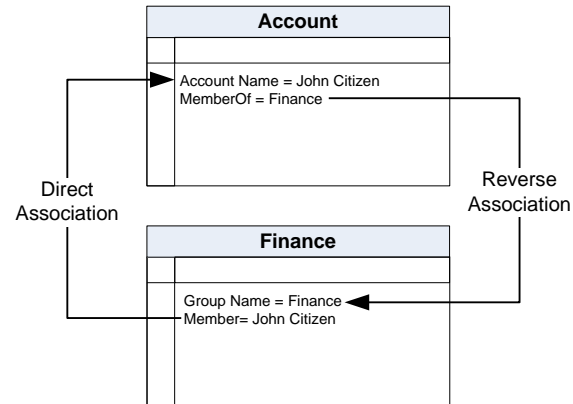
As most bi-directional associations have a physical attribute on one class and a virtual attribute on the other class, we recommend that you define the physical association attribute first.

Typically it is common to establish both directions of an association at the same time, that is, both the direct and reverse associations. You can use the [Direct Association](#) (see page 125) dialog to create and edit both associations at the same time.

Reverse associations appear in the mapping tree under the node of the class you have specified a reverse association with.

Example: Reverse Association

The following diagram shows a direct and reverse association between the account and group finance class, that is, a bi-directional association, created when you map the attribute in the account that contains the groups the account belongs to, for example, the *memberOf* attribute, to the group's naming attribute.



Indirect Associations

An *indirect* association occurs when there is a third entity that defines the association between any two classes of object. For example, an intermediate table that binds two other database tables together.

In an indirect association, the association is stored as an independent entity rather than as a property on one of the objects.

For example, there is an indirect association between an account object and a group object if there is an intermediate table, such as a *membership table*, that identifies the associations between individual accounts and groups.

In a *direct* association, objects have an attribute that points directly to the other object. However in an *indirect* association, both of the related objects have attributes that point not to each other, but to the membership table.

Membership tables define the members of each group. They contain the association mappings that identify the individual accounts and groups that are related, for example, the groups an account belongs to, and a list of accounts in each group. In a membership table, associations between objects are stored in a many-to-many mapping table.

Membership tables let you specify a separate lookup table for associations between account and group objects and map the relevant attributes.

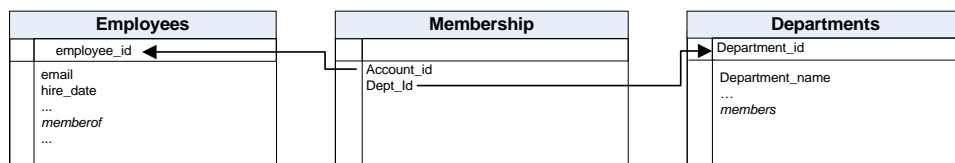
To define an indirect association, you specify the membership table that contains references to both of the related objects.

When you create an indirect association between two objects, Connector Xpress automatically creates the reverse association, that is; indirect associations are by definition bi-directional.

Note: You can only create indirect associations for JDBC mappings.

Example: Indirect Association

The following diagram shows the indirect association that has been mapped between the employee and department classes using a membership table. The following is an example schema and database.



The following are the three tables in the database:

- **Employees table**—lists the employees in the organization.
The virtual attribute `memberOf` contains Group IDs, that is the departments the employee is a member of.
- **Membership table**—defines the associations between Employees and Departments. It contains the association mappings that identify the individual employees and departments that are related, that is, which departments an employee belongs to, and a list of employees in each department.
- **Departments table**—lists the departments in the organization.
The virtual attribute `members` contains Account IDs, that is, the list of employees in the department.

More Information:

[How to Define Group Membership](#) (see page 50)

[How to Create an Indirect Association](#) (see page 55)

How to Define Group Membership

To define group membership and create an association between classes that defines the class as a group class, you do the following:

1. Create an account class and map its attributes.

Note: When you create a project, Connector Xpress creates a user account class by default.

2. Create the class you want to define as a group class, and map its attributes.

Note: If you use the wizard to map account and group classes, the wizard automatically creates a group class and the details of the association that you need to complete.

3. Create a direct, reverse, or indirect association between the classes and map the groups `group.member` or `group.uniqueMember` attributes to the accounts naming attribute.

Creating an association defines the group membership and creates the association between the classes.

Account Class Mapping Example

This example shows you the procedure you would follow if you were an administrator that wanted to map an account class for a JNDI data source. This example shows you to map an endpoint's account class to the provisioning account class. This example assumes that the administrator has set up a JNDI data source.

Follow these steps:

1. On the Project menu, click New.
The Select Data Source for new project dialog appears.
2. Select the data source you want to use for the project.
The Endpoint Types dialog appears.
3. On the Endpoint Type Details dialog, specify a name, description, and version for your connector.
Note: These fields are for descriptive purposes only.
Connector Xpress automatically creates a user account provisioning class node in the Mapping tree when you create a project.
4. In the Mapping Tree, click the User Account node.
The Map Account Class dialog appears.
5. Select the endpoints type's object class that you want to map from the Add structural class list. For example, inetOrgPerson.
6. In the Mapping Tree, click the Attributes node underneath the User Account node.
The Map Attributes dialog appears.
7. Map the endpoints mandatory attributes to the provisioning attributes in the Map Object Class Attribute mapping table. For example, map cn Account ID and sn to Last Name.
Note: If the table list fails to populate when mapping tables, verify that your database does not have outstanding transactions or locks on the schema metadata.
8. Map any other required attributes, for example, the user password, street, and title.
9. Click the Classes node in the mapping tree.
The Mapped Classes dialog displays a summary of the classes you have mapped. You can use this dialog to revise the native class to provisioning mappings you have made.
10. In the Mapping Tree, click the Account Id node under the Attributes node.
The Attribute Details dialog appears.
The dialog displays the LDAP attribute assigned to each field, its datatype, the JavaBean property name that JIAM uses, and whether the field is required (allows null values) and any length constraints.

11. Click the Last Name node under the Attributes node.

The Attribute Details dialog appears with the default policy value set.

Note: When you map a required attribute to a well-known provisioning attribute, Connector Xpress sets a default account template value by default.

12. Save the project.

How You Create a Direct and Reverse Association

To create a direct association between two classes, for example, an account class, and a group class, you do the following:

1. Start a new project and specify a data source for your project.
2. Create and map an account class.
3. Create a class that you want to define as a group and map it to the class on the endpoint that defines the entries for a group of names, for example, *groupOfNames*.
4. Map the group's name and its member attribute.
5. Specify that you want to create a direct association between the group class and the account class.
6. Map the group's member attribute to the account's naming attribute.

Mapping the group's member attribute specifies that the group's membership attribute is populated by the account's naming attribute.

This describes the association between the group class and the account class and creates a direct association between the account class and group class.

7. Specify that you want to create a reverse association between the account class and the group class.
8. Map the account class memberof attribute to the group's naming attribute.

Note: If the native account class does not have a memberOf attribute, to create a virtual memberOf attribute and map it to the group's naming attribute.

Connector Xpress creates the direct and reverse associations between the account and group class you have mapped and automatically creates and displays the association under the User Accounts node.

Direct and Reverse Association Example

This example shows you the procedure an administrator would follow to create a direct and reverse association between an account class, and a group class. In this example, the administrator defines an association that describes the relationship between the group class and the user account class.

This example assumes that the administrator has setup a JNDI data source, and created and mapped an account class named User account.

To create a direct and reverse association between an account class and a group class, define an association that describes the relationship between the group class and the user account class.

Follow these steps:

1. In the mapping tree, click the Classes node.
The Mapped Classes dialog appears.
2. Click Add on the Mapped Classes dialog, and type a name and for your class, for example, Group of Names.
Connector Xpress adds the new class to the mapping tree.
3. In the mapping tree, click the Group of Names node.
The Map Class dialog appears.
4. In the Structural class list, select the native class that you want to map, for example, groupOfNames.
5. In the Mapping tree, click the Attributes node.
The Map Attributes dialog appears.
6. Map the groups name and the group's member attribute to the provisioning attributes. For example, map the native attributes *cn* and *member* to the provisioning attributes objectname and member.
7. Select the Multivalued check box for the member attribute.
Selecting the check box specifies that the member attribute is multivalued and can hold multiple account names.
8. Click the Associations node under the Group of Names node.
The Class Associations dialog appears.
9. In the *Create direct association with* list, select the User Account class.
Connector Xpress adds a node named *with User Account* to the mapping tree.
10. Click the *with User Account* node under the Associations node, under the Group of Names node.
The Direct Association with User Account dialog appears.

Note: Connector Xpress selects the group's naming attribute in the Group of Names By Attribute field as the attribute to map to by default.

11. In the Group of Names Attribute, select member.

Selecting the member attribute maps the groups member attribute to the account's naming attribute. That is, you have specified that the groups member attribute is populated by the accounts naming attribute, and defined the Group of names class as a group class.

12. Select the Include a Reverse Association check box.

The Reverse Association dialog appears.

13. In the New Virtual Attribute field, type memberof.

In this example, the native account class does not have a memberOf attribute, so create a virtual memberOf attribute and map it to the group's naming attribute.

Note: Connector Xpress selects the group's naming attribute in the By Attribute field as the attribute to map to by default.

14. Click Project, Save.

Connector Xpress creates the direct and reverse associations between the account and group class you have mapped.

How to Create an Indirect Association

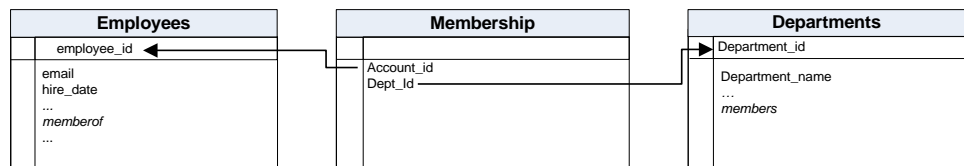
This example shows you the process you use to define an indirect association between two classes, for example, an employee class, and a department class using a membership table. To create the indirect association:

1. Create a [project](#) (see page 29) and [specify a JDBC data source](#) (see page 14) for your project.
2. Create and map class that holds a list of employees.
3. Create and map a class that holds a list of departments.
4. Specify that you want to create an indirect association between the employee class and the department class.
5. Specify the membership table that contains the association mappings that identify the individual employees and departments that are related.
6. Specify the membership table column that defines the association between employees and departments, and the membership table column that defines the association between departments and employees.
7. Create a virtual *memberof* attribute in the employee class and map and it to the membership table column that contains the list of departments the employee is a member of.
8. Create a virtual *members* attribute in the department class and map and it to the membership table column that contains the list of employees in each department.
9. Save the project.

Indirect Association Example

This example shows you the steps you would follow if you are an administrator that wants to create an indirect association between an Employees class, and a Departments class using a membership table.

This example uses an example schema, *HR*, and an example membership table, *Membership*. The membership table columns *Account_Id* and *Dept_id* contain the association mappings that identify the individual employees and departments that are related, as shown in the following example:



To identify individual employees and departments that are related, create an indirect association between them.

Note: This example assumes that you have already [set up a JDBC data source](#) (see page 14), and created and mapped an account class named Employees.

Follow these steps:

1. Click the Classes node.
The Mapped Classes dialog appears.
2. Click Add, then specify a name for your class, for example, Departments.
Connector Xpress adds a node named Department to the mapping tree.
3. Click the Departments node in the mapping tree.
The Map Class dialog appears.
4. Specify a name and description for your class.
Note: These fields are for descriptive purposes only.
5. Select the schema and table you want to map, for example, HR and Departments.
6. In the mapping tree, click the Attributes node.
The Map Attributes dialog appears.
7. In the Name column, map the account naming attribute to the objectname attribute.
8. Click the Associations node under the Employees node.
The Class Associations dialog appears.
9. Create an indirect association with the Departments class.

Connector Xpress adds a node named *with Departments* under the Associations node for the Employees class in the mapping tree.

10. In the Mapping tree, click the *with Departments* node under the Associations node.

The Indirect Association dialog appears.

11. Specify the schema that contains the classes you want to map, for example, *HR*.

12. In the Membership Table list, select the membership table, *Membership*.

This table specifies the association mappings that identify the individual employees and departments that are related.

13. In the Employees Attribute list, select the Employees class naming attribute.

14. In the Membership Table Columns list, select AccountID and DeptID respectively.

The result is the following:

- Maps the Employees class naming attribute, *employee_id*, to the membership table column, *AccountID*. This defines the association between employees and departments.
- Maps the Department class naming attribute, *Department_id*, to the membership table column, *DeptId*. This defines the association between departments and employees.

Note: Connector Xpress selects the naming class attributes by default in the Employees and Departments Attributes list.

15. In the Employees Attribute and Departments Attributes fields, type *member* and *memberof* respectively.

Note: In this example, because the Employees and Department classes do not have a *memberOf* or *member* attribute, create a virtual *member* and *memberof* attributes.

The virtual attributes you create describe the association between the Employee class and Department class.

These virtual attributes are a virtual representation of the association between the employee class and department classes naming attributes, and the membership table columns you mapped in step 11. The connector uses these virtual attributes to find the employees in a department, and the departments an employee belongs to.

Connector Xpress automatically does the following:

- Creates a *memberof and member* node under the Attributes node under the Employees and Department class node in the mapping tree.
- Automatically makes the attribute multivalued and selects the multivalued check box by default on the Provisioning Details dialog.
- Automatically creates the indirect association and displays it under the Associations node under the Departments node.

- Automatically creates the association between the Employees and Departments class from the Departments class point of view, under the Employees node. Attributes viewed from the Associations node under the Employees class therefore appear reversed.

16. Click Project, Save.

Connector Xpress creates the indirect association between the Employees and Departments class you have mapped.

Container Classes

Specifying a container class is similar to mapping an ordinary class except that the only attribute that you can map is Container Name.

Additionally, you can specify the classes that are the children of this container ("Contained Classes"). For example, the container Employee Groups can only allow Staff Group and Executive Group classes and not individual account classes.

Input Validation

Connector Xpress validates the entries you make in the fields on the following dialogs:

- Endpoint Type
- Map Class
- Provisioning Attributes
- Defined Associations
- Indirect Associations

Connector Xpress displays a warning icon next to any field that has invalid input, and a warning icon next to the corresponding node in the mapping tree. Connector Xpress displays details of the violation when you mouse-over the warning icon. The warning icon disappears after you correct your input and click another node in the mapping tree.

Operation Bindings

An operation binding is additional logic, such as a stored procedure or a script, that you can bind to a particular operation to specialize the handling of that operation. You can specify the timing of the logic invoked by the stored procedure in relation to the operation, that is, will it run before, after, or instead of the operation.

When CA IAM CS performs any operation, CA IAM CS verifies whether there are any operation bindings that tell it to invoke some logic before, instead of, or after that operation.

For example, imagine you want to add a user to an endpoint. You have the user's given name and family name. On the endpoint system, however, the record for that user is an attribute made up of a particular combination of their given name and family name. To resolve this situation, you can create a script that combines the two names to match the endpoint format and then, using an operation binding, specify that this script must run before any search you perform on the endpoint system.

- **Stored Procedures (JDBC endpoints only)**

An operation binding can invoke a stored procedure for Add, Modify, Delete, and Rename operations.

- **Scripts (JDBC and JNDI endpoints)**

An operation binding can invoke a script for Add, Modify, Delete and Rename operations, and an additional 16 operations such as Search, Lookup, Modify-Assocs, Delete-Assocs, Activate, Deactivate, and such.

A script in this instance can either be a called function stored in a global script, or a stand-alone scriptlet. Calling functions that exist within a global script is best practice because you can then reuse those functions for other operation bindings.

You can apply an operation binding to any object class. For example, if you want to record all modify operations to either an account object or a group object in a log file, you could use a single operation binding and apply it to both.

You can apply multiple operation bindings with the same timing (before, after, instead of) to a single object. For example, invoking two stored procedures to run before a particular operation.

Note: Connector Xpress does not support binding an operation to a compound class.

Stored Procedures

Stored procedures are located on JDBC endpoints. They are code that CA IAM CS can invoke before, after, or instead of an operation. Stored procedures are only relevant for relational database endpoints and are written in the language specific to that endpoint.

More Information:

[Bind Operations to Stored Procedures](#) (see page 61)

Scripts

Scripts are located in the Connector Xpress project file and are written using JavaScript. As with stored procedures, CA IAM CS can invoke a script before, after, or instead of any Identity Management operation.

You can create global scripts or individual scripts. A global script contains JavaScript functions that any number of operation bindings can invoke. Global scripts are an excellent way to store and reuse common functions.

An individual script is a piece of JavaScript code that is only used by a single operation binding. You would typically use an individual script for a simple specialization of the operation. If you want to bind several functions within a global script, you can create an individual script that invokes selected functions.

More Information:

[Bind Operations to Scripts](#) (see page 63)

Bind Operations to Stored Procedures

You can bind operations to stored procedures on JDBC databases to specify actions that you want to occur, before, after, or instead of, standard account CRUD operations. For example, Add, Modify, and Delete. Other types of operations are available, depending on the type of operation binding you select.

Follow these steps:

1. Create a Connector Xpress JDBC Project.
2. Map the [user account class](#), (see page 51) and any other class as required.
3. Click the Operations Bindings node.
The Operation Bindings Editor appears.
4. In the Object Classes Filtering list, select an object class.
You have specified the object class you want to create the operation binding for.
5. Click Create.
The Create Operation Binding dialog appears.
6. Select a class in the Available object classes list and add it to the Added object classes list.
You have specified the object classes you want to apply the operation binding to.
7. Under Type, select Stored Procedure.
8. In the Available Operations list, select an operation.
You have specified the type of operation that you want to bind the operation to.
9. In the Timing list, select a timing.
You have specified when the operation binding is executed.
10. Click OK.
A node is added to the mapping tree which displays the type of operation, the timing you selected and the name of class you want the operation binding to apply to.
11. Click the node that displays the information about the operation binding you created.
The Stored Procedure dialog appears.
12. In the Procedure list, select a stored procedure.
You have bound the procedure to the operation you specified in step 8.
Note: If the procedure list fails to populate verify that your database does not have outstanding transactions or locks on the schema metadata.
13. Edit any other details of the stored procedure as required.
You have specified the parameters for a stored procedure style operation binding.

14. Save the project.

More Information:

[Operations Bindings Editor](#) (see page 155)

[Operation Bindings – Stored Procedure Editor](#) (see page 156)

Bind Operations to Scripts

You can bind operations to scripts to specify actions that you want to occur, before, after, or instead of, standard account CRUD operations, such as Add, Modify and Delete. Other types of operations are available, depending on the type of operation binding you select. You can bind an operation to a specific function in a global script, or bind an operation to an individual script. You can bind operations to scripts for any endpoint types which permit them (such as JNDI and JDBC).

Follow these steps:

1. Create a Connector Xpress JDBC or JNDI project.
2. Map the [user account class](#), (see page 51) and any other class as required.
3. Click the Operations Bindings node.
The Operation Bindings Editor appears.
4. In the Object Classes Filtering list, select an object class.
You have specified the object class you want to create the script binding for.
5. Click Create.
The Create Operation Binding dialog appears.
6. Select a class in the Available object classes list and add it to the Added object classes list.
You have specified the object classes you want to apply the script binding to.
7. Under Type, select Script.
8. In the Available Operations list, select an operation.
You have specified the type of operation that you want to bind the script to.
9. In the Timing list, select a timing.
You have specified when the script binding is executed.
10. Click OK.
A node is added to the mapping tree which displays the type of operation, the timing you selected and the name of class you want the script binding to apply to.
11. Click the node that displays the information about the script binding you created.
The Script Editor dialog appears.
12. To bind a function in a global script to an operation, do the following:
 - a. Select Execute a function in a global script.
 - b. Select a global script from the Global Script list.
Selecting a global script specifies the script where the function you want to bind to the operation is located.
 - c. In the Function name field, type the name of the function.

You have specified the function you want to bind to the operation.

13. To bind an operation to an individual script, do the following:

- a. Select Execute an individual script.
- b. Click Edit Script.

The Edit Script dialog appears.

- c. Load or paste the script into the Edit Script dialog as required.
- d. Click OK.

14. Edit any other details of the script binding as required.

You have specified the parameters for a script binding style operation binding.

15. Save the project.

Import Operation Bindings

If you created operation bindings in another project and you want to reuse them, or if you simply want to restore operation bindings from a backup, you can import operation bindings from an XML file.

When you import operation bindings, Connector Xpress imports operation bindings and any references to stored procedures.

Follow these steps:

1. Select Metadata, Import Operation Bindings.

The Import Operation Bindings dialog appears.

2. Navigate to the operation bindings XML file and select Open.

The imported operations bindings and all associated scripts or references to stored procedures appear under the Operation Bindings node.

Export Operation Bindings

If you plan to reuse operation bindings in another project or if you simply want to back up your operations bindings, you can export operation bindings to an XML file. When you export operation bindings, Connector Xpress makes a copy of all operation bindings and any scripts or references to stored procedures. You can create a copy of a live endpoint type and that contains all operation bindings.

Follow these steps:

1. Select Metadata, Export Operation Bindings.

The Export Operations Bindings dialog appears.

2. Specify the folder to save the XML file in and the name of the exported operation bindings.

Your operation bindings are saved.

When you export operation bindings, Connector Xpress automatically encapsulates scripts in CDATA sections in the exported XML file. You can easily cut-and-paste from exported XML files without having to worry about XML quoting issues such as "<" => "<" and "&" => "&".

Stored Procedure and Column Considerations

This section covers some recommendations for your database schema to ensure smooth operations with stored procedures.

Stored procedure arguments that do not have a common SQL type reported by their drivers (that is, the driver returns `java.sql.Type.OTHER = 1111`) are treated as `Type.VARCHAR (16)`, assuming that the driver converts from string to the argument's desired native type. For example, this works for Oracle `NVARCHAR2` arguments. If this does not work, your stored procedure is not invoked and a failure message ending with "Invalid column type" appears.

We recommend that you use basic types (for example, basic types related to `VARCHAR`) for stored procedure arguments where possible, and verify other argument types against a single stored procedure against your desired vendor and version before proceeding to wide spread usage.

Verify that the native type of account/group table column you select as the key when creating a Group-Account association matches the type of corresponding columns in your chosen membership table. If they do not match, then membership information is not retrieved successfully. We recommend that you use strict constraints as much as possible. For example, if the column you select as the group naming attribute is of type `NVARCHAR2` and the matching column is of type `VARCHAR2` in the membership table, then looking up the groups an account belongs to returns an empty list (or at least is missing groups which have multibyte characters in their names).

We recommend that you do not use the percent (%) and underscore (_) characters because they act as wildcard characters when searching for database objects like schemas, tables, table columns, and stored procedure arguments. These values are quoted where they do appear, but this is an area of considerable divergence between vendors and versions. For example, some vendors do not report the quotation character used in some releases correctly. There are no longer any known problems with %/_ for any of our supported vendors.

Important! Connector Xpress and CA IAM CS read and write data from stored procedures through their arguments. However, they do not verify the validity of the code of any stored procedures you bind to. We recommend that you verify the validity of the code of any stored procedures you bind to.

Pure Scripted Connectors

The fully functional SDK script connector bundled with this SDK is an example of a 100 percent scripted connector.

If you do not want to use a ready-made connector, you can create your own pure scripted connector using a templates provided by Connector Xpress. You can use the following two templates to create a pure scripted connector:

- SDK DYN Script
- SDK DYN UPO Script

Using this template as a starting point, you can invoke your own JavaScript functions for each mandatory operation. This functionality relies on the 'instead of' operation binding. Before CA IAM CS performs any operation, it checks to see whether there are any operation bindings that tell it to invoke some logic before, after, or instead of the operation. Use the 'instead of' operation binding to invoke a JavaScript operation for your own pure scripted connector.

You must create an 'instead of' operation binding for each of the mandatory operations; Add, Delete, Modify, Search, and Lookup.

You can 'hot deploy' a pure scripted connector, which means that you do not have to change CA IAM CS for the new connector to become operational.

A hot deployed connector specifies its connector.xml content as part of its metadata 'connectorXML' at the namespace level (accounting for proper XML encoding of this value). This means that a scripted connector can be created on the fly on a running CA IAM CS without needing to restart it, or adding a static connector.xml on the CA IAM CS host. Also, any connector configuration changes that are typically specified in connector.xml can be made active without a CA IAM CS restart such as the connection pool settings.

How to Create a Pure Scripted Connector

Using templates as a starting point, you can create your own pure scripted connector that invokes your own JavaScript functions for each mandatory operation (Add, Delete, Modify, Search, and Lookup). Do the following:

1. [Create a project from a template.](#) (see page 33)

The two pure scripted connector templates are SDK DYN Script and SDK DYN UPO Script.

2. Map the attributes.

The template gives you some attributes as a starting point but you can add more.

3. [Create operation bindings for each of the mandatory functions.](#) (see page 63)

The template includes the five mandatory operations (Add, Delete, Modify, Search and Lookup), but you can add more.

4. Add your JavaScript operations.

Note: The template provides basic scripts, but you will need to customize these.

5. Click the Endpoint type node at the top level of the mapping tree.

The Endpoint Type Details dialog appears.

6. Click Load, then select the connector.xml configuration you want to load.

Connector Xpress loads the connector.xml configuration in the Connector XML field.

7. In the Connector XML field, configure the following Connector XML settings:

- a. Change the value of "name" from the template default to a unique name.

```
<Property name=' name '>  
<Value>UniqueName</value>  
</Property>
```

- b. Change the value of connectorTypeName from the template default to a unique name.

```
<Property name=' connectorTypeName '>  
<Value>UniqueName</value>  
</Property>
```

- c. (Optional) We recommend that you look at the other configuration items in the Connector XML to fine-tune your connector configuration. For example:

```
<Property name=' defaultConnectorConfig '>
```

Note: If you keep the template name for your new pure scripted connector, CA IAM CS recognizes it. You can now deploy the pure scripted connector. It is best practice, however, to give your connector a new name which means you need to hot-deploy it to help ensure that CA IAM CS recognizes it and loads its settings. For more information on hot-deployment, see the *CA IAM Connector Server Programming Guide*.

8. Save the Connector Xpress project.
9. Deploy the connector.

Promote a Connector from a Test to a Production Environment Example

In this example, Forwardinc has completed creating and testing a new Oracle connector that maps Oracle database tables to provisioning accounts and groups. Forwardinc has deployed the connector to their test and staging provisioning server, `forwardinc_Test_PS`. They now want to deploy the connector to a new production provisioning server, `forwardinc_Prod_PS`, and remove the connector from the test environment after deploying the connector.

Example: How forwardinc Promotes a Connector from a Test to a Production Environment

The following example shows you the process the administrator of forwardinc's Identity Management installation follows to promote the connector from the test environment to the new production environment. The Administrator:

1. Saves the Oracle connector as a Connector Xpress project. For example, `ORA_Connector.con`.
2. Configures the new production provisioning server, `forwardinc_Prod_PS`.
The connection details of the production provisioning server to which forwardinc wants to deploy the connector are specified.
3. Opens the Connector Xpress project `ORA_Connector.con`.
4. Creates an endpoint type on the `forwardinc_Prod_PS` provisioning server.
5. Specifies the managing connector server that manages the new endpoint type.
Specifying the managing connector server helps ensure that requests for the endpoint type are routed to it.
6. Explores and correlates the new endpoint type.
The exploration and correlation populates the `forwardinc_Prod_PS` provisioning server with data found in the endpoint.
7. Deletes the old endpoint type from the test provisioning server, `forwardinc_Test_PS`.
The endpoint type, the associated account templates, and any child endpoints are deleted, however data on the endpoint is unchanged.

Mapping Custom Attributes for New Mainframe Connectors

This section applies to the following mainframe connectors:

- CA ACF2 v2
- CA Top Secret v2
- RACF v2

Any LDAP attribute on a mainframe endpoint that has a string representation can be exposed as a custom attribute in the connector. Map these custom attributes with Connector Xpress.

Follow these steps:

1. Add the Provisioning Server or connector server to Connector Xpress.
 - Create a project from the mainframe endpoint type (CA ACF2 v2, CA Top Secret v2, or RACF v2).
1. In the new project, navigate to Classes, User Account, Attributes, then add the new attributes.

The new attributes can have the following types:

- String
- Integer
- Boolean
- Date
- Time

2. For each custom attribute, enter the following information:

Name

Identifies the attribute. This appears on the User Console page.

Maps To

Contains the LDAP name of an attribute as it appears in CA LDAP Server on the endpoint

3. For any Boolean attribute, edit the following properties:

Value Conversion

Select Symbolic.

Boolean Values

Replace the Y and N strings with True and False.

4. For any Date attribute, ensure that the value has the same have the same format as the matching attribute on the endpoint.

5. For any custom Date attributes, use the type String.

Chapter 4: Connector Xpress Utilities

This section contains the following topics:

- [What You Can Use Connector Xpress Utilities to Do](#) (see page 73)
- [Provisioning Server Configuration](#) (see page 73)
- [Connector Server Configuration](#) (see page 75)
- [Manage CA IAM CS with Connector Xpress](#) (see page 79)
- [Mapping Summary File](#) (see page 84)
- [Import XML Data Model File](#) (see page 85)
- [Export Data Model to an XML File](#) (see page 86)
- [Merge a Modified Data Model](#) (see page 86)
- [Managing Endpoints](#) (see page 87)
- [Configuration Data Location](#) (see page 90)
- [Edit Metadata](#) (see page 93)

What You Can Use Connector Xpress Utilities to Do

You can use Connector Xpress utilities to:

- [Set up a Provisioning Server configuration](#) (see page 73)
- [Set up a Connector Server configuration](#) (see page 75)
- [Associate an endpoint with a connector server using different methods](#) (see page 76)
- [Update a CA IAM CS password](#) (see page 78)
- [Export a mapping summary HTML file for an endpoint](#) (see page 84)
- [Add, populate, clean and remove dynamic endpoints](#) (see page 87)
- [Edit and deploy metadata](#) (see page 93)
- [Set managing CS for endpoint types](#) (see page 76)
- [Acquire, explore, correlate, and remove endpoint systems](#) (see page 88)

Provisioning Server Configuration

Connector Xpress lets you manage connectors on a server by adding, editing, and removing Provisioning Servers.

Add and Configure a Provisioning Server

To manage connectors on a server, add and configure a Provisioning Server.

Follow these steps:

1. In the Provisioning Servers tree, right-click the Provisioning Servers node, then click Add Server.

The Provisioning Server Details dialog appears.

2. Complete the fields in the dialog, then click OK.

Connector Xpress adds the Provisioning Server to the Provisioning Servers tree.

Note: If the Provisioning Server already has a [Connector Server configured](#) (see page 76), it appears under the Provisioning Server node.

More Information:

[Provisioning Server Details Dialog](#) (see page 161)

Edit Provisioning Server Details

If the details of your Provisioning Server change, for example, when you upgrade your hardware, edit the details of your Provisioning Server if necessary.

Follow these steps:

1. In the Provisioning Servers tree, right-click the server whose details you want to edit, then click Edit Server.

The Provisioning Server Details dialog appears.

2. Complete the fields in the dialog, then click OK.

Connector Xpress changes the details of the Provisioning Server.

More information:

[Provisioning Server Details Dialog](#) (see page 161)

Remove a Provisioning Server

If the details of your Provisioning Server change, for example, when you remove or replace your hardware, remove the details of your Provisioning Server from the Provisioning Servers tree if necessary.

Follow these steps:

1. In the Provisioning Servers tree, right-click the Provisioning Server that you want to remove, then click Remove Server.
2. When prompted, confirm that you want to remove the Provisioning Server.
Connector Xpress removes the Provisioning Server.

Connect to a Provisioning Server

To connect to a Provisioning Server, provide a password for the Provisioning Server if necessary.

Follow these steps:

1. Expand the Provisioning Servers tree, and then double-click the Provisioning Server you want to connect to.
The Provisioning Server password dialog appears.
2. Type the password, then click OK.

Note: If you enter an invalid password when attempting to connect to the Provisioning Server, the connection fails and Connector Xpress displays an error node on the Provisioning Servers tree. To reconnect with a different password, refresh the Provisioning Servers tree.

More information:

[Provisioning Server Password Required Dialog](#) (see page 162)

Connector Server Configuration

Connector server configuration lets you configure how your Provisioning Server routes individual endpoints to connector servers.

You can create multiple configurations and then associate the appropriate configuration with a given endpoint.

Note: [Create the connector server configuration](#) (see page 76) for the endpoint before deploying the connector.

Create a Connector Server Configuration

To specify how your Provisioning Server routes endpoint types or individual endpoints to connector servers, you create a connector server configuration.

Follow these steps:

1. Expand the server in the Provisioning Servers tree where you deployed your connectors.
2. Right-click on the CS Configs node and then select New CS Config.

The Connector Server Configuration dialog appears.

3. Complete the fields on the dialog, then click OK.

You have specified how your Provisioning Server routes endpoint types or individual endpoints to connector servers.

More information:

[Edit Connector Server Configuration Dialog](#) (see page 127)

How to Set a Managing Connector Server

You can select a server to manage a particular endpoint type or endpoint. When you configure alternate Provisioning Servers and each Provisioning Server has a different CS, you can associate two or more Connector Servers with an endpoint type.

You can associate an endpoint with a CA IAM CS in either of the following ways:

- [From the endpoint type node](#) (see page 76)
- [From the CA IAM CS on the CS Configs node](#) (see page 77)

Set a Managing Connector Server from the Endpoint Type Node

You can select a connector server to manage a particular endpoint type or endpoint from the endpoint type node.

Follow these steps:

1. In the Provisioning Servers tree, right-click the endpoint type you want to manage, then click Set Managing CS.

The Select Connector Servers dialog appears.

2. Select the Connector Server or Connector Servers from the list, then click OK.

You have specified the Connector Server or Connector Servers you want to manage. Connector Xpress adds the endpoint type or endpoint to the managed branches of the selected Connector Servers.

Set a Managing Connector Server from the CS Configs Node

You can select a connector server to manage a particular endpoint type or endpoint from the CS Configs Node.

Follow these steps:

1. Expand the CS Configs node.
2. Right-click the CS Config you want to associate with the endpoint, then click Edit CS Configuration.

The Edit Connector Server Configuration dialog appears.

3. Complete the following fields on the dialog, then click OK.

Object Handle

Defines the object handles of the endpoint types being managed on the selected Provisioning Server.

Example: Namespace=dyn_jndi_democorp,Domain=forward,Server=Server

Edit a Connector Server Configuration

To change how your Provisioning Server routes endpoint types to a connector server, you can edit the connector server configuration.

Follow these steps:

1. Expand the server in the Provisioning Servers tree where you deployed your connectors.
2. Expand the CS Configs node.
3. Right-click the server configuration you want to edit, and then select Edit CS Config.

The Connector Server Configuration dialog appears.

4. Complete the fields on the dialog, then click OK.

You have changed how your Provisioning Server routes endpoint types or individual endpoints to connector servers.

More information:

[Edit Connector Server Configuration Dialog](#) (see page 127)

Remove a Connector Server Configuration

To remove a connector server configuration, you can delete it from the Provisioning Servers tree.

Follow these steps:

1. Expand the server in the Provisioning Servers tree where you deployed your connectors.
2. Expand the CS Configs node.
3. Right-click the server configuration to edit, and then select Delete CS Config.
4. When prompted, confirm that you want to delete the connector server configuration.

The connector server configuration is removed.

Update a CA IAM CS Password

To help ensure good security practice, update the CA IAM CS password periodically. Updating the password also helps ensure that only a known set of provisioning servers are using the CA IAM CS. For example, after updating a password, you only update provisioning servers that should be using the CA IAM CS with the new password. Provisioning servers that should not have access to the CA IAM CS will not be able to use the CA IAM CS after the system restarts.

Follow these steps:

1. In the Provisioning Servers tree, expand the CS Configs node.
2. Right click the CS Config you want to edit, then click Edit CS Config.

The Edit Connector Server Configuration dialog appears.

3. Complete the fields on the dialog, then click OK.

Manage CA IAM CS with Connector Xpress

If you have installed CA IAM CS with CCS, you can use Connector Xpress to manage a Connector Server. You can add, edit, and remove Connector Servers.

Configuring a Connector Server allows you to manage connectors accessed through CA IAM CS.

Follow these steps:

1. In the Provisioning Servers tree, right-click the Connector Servers node, then click Add Connector Server.

The Connector Sever Details dialog appears.

2. Complete the following fields on the Connector Sever Details dialog, then click OK.

Host Name

Defines the name of the host where the Connector Server is located.

Port

Defines the port used to connect to the CA IAM CS

Bind DN

Defines the user name used to connect to the Connector Server in DN format.

Use TLS

Specifies that a secure TLS connection to the Connector Server is established. This means that the connector does not transmit the password in clear text. If not selected, the connector transmits the password in clear text.

Default: Selected

Key

Defines the name of the configuration option that the connector uses to connect to the Connector Server. For example, `com.ca.iam.server.class=com.ca.iam.model.impl.JCSServer` and `com.ca.iam.server.superagent=true`.

Value

Defines the value of the configuration option.

Key column

Displays the full list of configuration options that the connector uses to connect to the Connector Server.

Value column

Displays the corresponding values for the configuration options displayed in the Key column.

Connector Xpress displays the Connector Server tree expanded with the list of known connector servers.

Configure a Connector Server

You can use Connector Xpress to configure a Connector Server that manages connectors accessed through a CA IAM CS. To configure a CA IAM CS, verify that a Connector Server is installed and running.

Follow these steps:

1. In the Provisioning Servers tree, right-click the Connector Servers Node, then click Add Connector Server.

The Connector Sever Details dialog appears.

2. Complete the following fields on the Connector Server Details dialog, then click OK.

Host Name

Defines the name of the host where the Connector Server is located.

Port

Defines the port used to connect to the CA IAM CS

Bind DN

Defines the user name used to connect to the Connector Server in DN format.

Use TLS

Specifies that a secure TLS connection to the Connector Server is established. This means that the connector does not transmit the password in clear text. If not selected, the connector transmits the password in clear text.

Default: Selected

Key

Defines the name of the configuration option that the connector uses to connect to the Connector Server. For example, `com.ca.iam.server.class=com.ca.iam.model.impl.JCSServer` and `com.ca.iam.server.superagent=true`.

Value

Defines the value of the configuration option.

Key column

Displays the full list of configuration options that the connector uses to connect to the Connector Server.

Value column

Displays the corresponding values for the configuration options displayed in the Key column.

Connector Xpress displays the Connector Server tree expanded with the list of known Connector Server.

Connect to a Connector Server

You can use Connector Xpress to connect to a Connector Server and display and manage the endpoints that the Connector Server manages.

Follow these steps:

1. In the Provisioning tree, click the Connector Server you want to connect to.
2. When prompted, enter the password for the Connector Server you want to connect to, then click ok.

Connector Xpress connects to the Connector Server and queries whether it is a stand-alone connector server.

The Connector Server responds with confirmation that it is a stand-alone Connector Server.

Connector Xpress displays the End Points node under the Connector Servers node.

3. Select the End Points Type node in the Provisioning tree under the Connector Server you want to connect to.

Connector Xpress displays the CA IAM CS, CSS endpoint types, endpoints, and the dynamic endpoint types that the selected Connector Server manages.

Edit Connector Server Details

If the details of your Connector Server change, for example, when you upgrade your hardware, edit the details of your Connector Server if necessary.

Follow these steps:

1. In the Provisioning Servers tree, under the Connector Servers node, right-click the Connector Server whose details you want to edit, then click Edit Server.

The Connector Server Details dialog appears.

2. Complete the fields in the dialog, then click OK.

Connector Xpress changes the details of the Connector Server.

More information:

[Connector Server Details Dialog](#) (see page 118)

Create an Endpoint Type Managed by a Connector Server

You can create an endpoint type and manage it with a specific Connector Server.

Note: You can only create an endpoint type when a Connector Xpress project is open.

Follow these steps:

1. [Open an existing project](#) (see page 36).
2. In the Provisioning Servers tree, under the Connector Servers Node, right-click the Endpoint Types node, then click Create New Endpoint Type.

The Create New Endpoint Type dialog appears.

3. Complete the fields on the dialog, then click OK.

You have defined the name of your new endpoint type and added the endpoint type to the Endpoint Types node of the Connector Server you specified.

Delete an Endpoint Type Managed by a Connector Server

You can remove a connector managed by a Connector Server using Connector Xpress when you no longer want to manage that connector in the Provisioning Manager.

Important! We strongly recommend that you only use Connector Xpress to remove endpoints associated with dynamic connectors, to help ensure successful deletion.

Follow these steps:

1. Expand the Endpoints node in the Provisioning Servers tree under the Connector Server node.
2. Right-click the endpoint you want to delete, then click Delete Endpoint.
3. When prompted, confirm that you want to delete the endpoint.

Connector Xpress deletes the connector, and removes the endpoint and associated account templates, but the data on the endpoint is unchanged.

Mapping Summary File

You can use the mapping summary file to help you debug and read logs. For example, you can use the mapping summary file if the attribute names in the generic schema are not descriptive, for example, eTDYN-str-i-01.

Generating a mapping summary file is also important when you want to write batch scripts for automation.

The mapping summary file is an HTML file that displays the following information for a selected endpoint type, or a currently open project:

- Provisioning LDAP attribute name
- Logical name
- Native name
- Display name
- Attribute values for each class defined in the dynamic endpoint

Export a Mapping Summary File

You can export a mapping summary file to help you debug and read logs. For example, you use the file to look up endpoint mappings between Provisioning LDAP attribute names and native attribute/column names.

You can export a mapping file for the currently loaded project, or a selected endpoint type in the Provisioning Servers tree.

Follow these steps:

1. Do *one* of the following:
 - In the Provisioning Servers tree, right-click the endpoint type you want to export a Mapping Summary file for, then click Export Mapping Summary File.
 - [Open the project](#) (see page 36) you want to export a Mapping Summary file for, then click Metadata, Export Mapping Summary File.

The Export Mapping Summary File dialog appears.

2. Specify the location where you want to save the file, then click OK.

Connector Xpress saves the mapping summary file in HTML format to the location you specified.

3. Open the file in web browser and review the endpoint mappings.

Import XML Data Model File

To edit previously exported XML data, you can import an XML data model file. Importing an XML data file into an existing project replaces the existing metadata of the endpoint.

Follow these steps:

1. Click Metadata, Import.
The Import Data Model from XML file dialog appears.
2. Navigate to the location of the XML file you want to import, then click OK.
Connector Xpress deploys the new data model and replaces the existing metadata of the endpoint.

Example: How an Administrator Imports and Deploys Metadata using an XML Data File

In this example, the administrator wants to replace the metadata on the endpoint *dyn_jdbc_endpoint* with metadata in the XML data file *export_dyn_jdbc_endpoint2.xml*. The administrator does the following:

1. Creates new metadata in a Connector Xpress project.
2. Saves the metadata in project named *dyn_jdbc_endpoint2.con*.
3. Exports the metadata as an XML data file named *export_dyn_jdbc_endpoint2.xml*.
4. Opens the *dyn_jdbc_endpoint.con* project file.
This file contains the metadata for the endpoint *dyn_jdbc_endpoint* that the administrator wants to replace.
5. Imports the *export_dyn_jdbc_endpoint2.xml* data file into the *dyn_jdbc_endpoint.con* project.
6. Deploys the merged data model to the endpoint named *dyn_jdbc_endpoint*.
Connector Xpress deploys the new data model and replaces the existing metadata on the *dyn_jdbc_endpoint*.

Export Data Model to an XML File

You can export the metadata for the currently open project into an XML file.

Follow these steps:

1. [Open the project](#) (see page 36) you want to export the metadata for.
2. Click Metadata, Export.

The Export Data Model to XML file dialog appears.

3. Specify the location where you want to save the file, then click OK.

Connector Xpress exports and saves the metadata in the file you specified.

Merge a Modified Data Model

You can select a data model XML file to load and merge into the currently loaded metadata. Merging an XML data file adds the additional account attributes to metadata for the endpoint.

Follow these steps:

1. [Open the existing project](#) (see page 36) you want to merge the metadata for.
2. Click Metadata, Merge.

The Merge Data Model from dialog appears.

3. Navigate to the location of the file you want to merge the metadata with, then click OK.

Connector Xpress overwrites or appends the data model file of the file you opened to the currently loaded data model.

Example: How an Administrator Merges the Metadata on an Endpoint using an XML Data File

In this example, the administrator wants to add some additional account attributes in one project to the metadata in another project. The administrator merges the metadata in the *dyn_jdbc_endpoint2.con* project with the metadata in the *dyn_jdbc_endpoint.con* project.

The *dyn_jdbc_endpoint.con* project contains the metadata for the endpoint named *dyn_jdbc_endpoint*. The administrator does the following:

1. Exports the metadata for the *dyn_jdbc_endpoint2.con* project to an XML data file named *export_dyn_jdbc_endpoint2.xml*.
2. Opens the *dyn_jdbc_endpoint.con* project.
3. Imports *export_dyn_jdbc_ns2.xml* into the *dyn_jdbc_endpoint.con* project.
4. Uses the Metadata Editor to verify that Connector Xpress has successfully merged the additional account attributes created in the *dyn_jdbc_endpoint2.con* project with the metadata in *the dyn_jdbc_endpoint.con* project.
5. Deploys the merged data model to the endpoint named *dyn_jdbc_endpoint*.
6. Uses the Provisioning Manager to verify that the new mappings are correct.

Managing Endpoints

To manage the accounts, users, groups, and other resource objects in your environment, you do the following:

- Acquire the endpoints
- Explore the endpoint for the objects you want to manage
- Correlate the objects to global users

You can specify how an endpoint is going to be explored and correlated. For example, you can specify how many levels in the container are explored, one level or the only the current subtree.

You can choose whether the correlate function creates any users that are not present or whether it associates accounts with no matching users to the [default user] global user.

You can also create, clean, and delete endpoint types.

How You Acquire and Manage Endpoints

Acquiring an endpoint automatically populates the Provisioning Server with accounts and other objects found in the acquired endpoint. An acquired endpoint is any application or computer managed by the Provisioning Server.

Acquiring an endpoint consists of creating it, exploring it, and correlating it. Correlating an endpoint is the process of examining accounts on it, and potentially creating users automatically and setting global user attributes from account attributes.

To manage an endpoint using Connector Xpress, do the following:

1. Create the endpoint in the Provisioning Server. When you register an endpoint, you are declaring it as an endpoint managed by the Provisioning Server.
2. Explore its contents. When you explore an endpoint, Connector Xpress finds the objects in the endpoint and stores a record of them in the Provisioning Server.
3. Correlate the explored accounts. When you correlate accounts on an endpoint, the Provisioning Server associates them with a global user in the Provisioning directory. You can choose whether the correlate function creates any global users that are not present or whether it associates accounts with no matching global user to the [default user] global user.
4. Update global user fields from accounts.

Whether you chose to let correlate function create missing users, you can optionally run an additional function that sets (or refreshes) selected user attributes using the account's attribute values that you select.

More Information:

[Create New Endpoint Dialog](#) (see page 120)

[Explore/Correlate Endpoint Dialog](#) (see page 135)

Acquire, Explore, and Correlate an Endpoint

To acquire an endpoint, first register it in the Provisioning Server, that is, specify the connection details and credentials of the endpoint so that the connector can communicate with it. Then explore the endpoint for the objects you want to be managed, and correlate the objects to global users.

To acquire, explore and correlate an endpoint

1. In the Provisioning Servers tree, right click the Endpoint node that you want to explore or correlate, then click Acquire Endpoint.

The Create New Endpoint dialog appears.

2. Complete the fields on the Create New Endpoint dialog, then click OK.
You have specified the connection details and credentials of the endpoint.
3. In the Provisioning Servers tree, right click the endpoint node that you created then click Explore/Correlate endpoint.
The Explore/Correlate endpoint dialog appears.
4. Complete the fields on the Explore/Correlate Endpoint dialog, then click OK.
You have specified how Connector Xpress explores and correlate the endpoint.

Create an Endpoint Type

You can create an endpoint type using the loaded metadata.

Note: You can only create an endpoint type when a Connector Xpress project is open.

Follow these steps:

1. [Open an existing project](#) (see page 36).
2. In the Provisioning Servers tree, right-click the Endpoint Types node, then click Create new Endpoint Type.
The Create New Endpoint Type dialog appears.
3. Complete the fields on the dialog, then click OK.
You have defined the name of your new endpoint type and added the endpoint type to the Endpoint Types node of the Provisioning Server you specified.

More information:

[Create New Endpoint Type Dialog](#) (see page 119)

Delete an Endpoint Type

You can delete an endpoint type using Connector Xpress when you no longer want to manage that endpoint type and the endpoints under it in the Provisioning Server.

Important! We strongly recommend that you only use Connector Xpress to remove endpoint types associated with dynamic connectors, to help ensure successful deletion.

To delete an endpoint type, expand the Endpoints Type node in the Provisioning Servers tree, right-click the endpoint type you want to delete, then click Delete Endpoint Type.

Connector Xpress deletes the endpoint type, the associated account templates, and any child endpoints. Data on the endpoint is unchanged.

Clean an Endpoint Type

When you want to delete all account templates and endpoints from a selected endpoint type, you can clean the endpoint type. Cleaning an endpoint type removes all endpoint objects from the Provisioning Server, and recreates the default account template object.

Follow these steps:

1. In the Provisioning Servers tree, right-click the endpoint type you want to clean, then click Clean Endpoint Type.

The Clean Endpoint Type Objects dialog appears.

2. Confirm that you want to clean the endpoint type.

Connector Xpress deletes all account templates and endpoints of the selected endpoint type from the Provisioning Directory. Data on the endpoints is not affected.

Delete an Endpoint

You can remove a connector using Connector Xpress when you no longer want to manage that connector in the Provisioning Manager.

Important! We strongly recommend that you only use Connector Xpress to remove endpoints associated with dynamic connectors, to help ensure successful deletion.

To delete an endpoint, expand the Endpoints node in the Provisioning Servers tree, right-click the endpoint you want to delete, then click Delete Endpoint.

Connector Xpress deletes the connector, and removes the endpoint and associated account templates, but the data on the endpoint data is unchanged.

More information:

[Managing Endpoints](#) (see page 87)

Configuration Data Location

The configuration data created using Connector Xpress is stored in various locations throughout the distributed system as described in the following sections.

CA IAM CS Routing Rules Location

The routing rules are located in the following location:

```
eTSAName=[CSNAME],eTSAContainerName=SAs,eTNamespaceName=CommonObjects,dc=[DOMAIN],dc=eta
```

Endpoint Type Metadata Location

The endpoint type metadata is located in the following location:

```
eTNamespaceName=[NAMESPACE],dc=[DOMAIN],dc=eta
```

Endpoint Type Metadata and CA IAM CS Routing Rules

The endpoint type metadata and CA IAM CS routing rules are stored on the Provisioning Server.

View Endpoint Type Metadata and CA IAM CS Routing Rules

To view the endpoint type metadata and CA IAM CS Routing Rules, connect to the Provisioning Server using an LDAP browser such as JXplorer.

CA IAM CS Routing Rules Hierarchy

Each CS has an entry under the following:

```
eTSAName=CS
name,eTSAContainerName=SAs,eTNamespaceName=CommonObjects,dc=server,dc=eta
```

For each endpoint type managed by the CS, there is an entry similar to the following:

```
eTSABranchDN : eTNamespaceName=Oracle Server,dc=server
```

Endpoint Type Distinguished Name

The endpoint type's distinguished name is as follows:

```
eTNamespaceName=  
MyEndpointType,dc=Domain,dc=TopLevelProvisioningServer
```

The following attributes are used to store metadata on each dynamic endpoint type object:

eTMetaData

(Mandatory) Stores the XML document containing all wizard mappings, excluding stored procedures and operation bindings.

eTOPBindingsMetaData

(Optional) Stores the XML document containing stored procedures and operation bindings.

Connector Xpress Local Storage

Connector Xpress project files (.con files) are stored on the local file system.

Connector Xpress data source configurations are stored under Connector Xpress user preferences.

Note: You cannot export Connector Xpress data source configurations.

More Information:

[Set Preferences](#) (see page 26)

[Projects](#) (see page 29)

[Where User Preferences Are Stored](#) (see page 25)

Edit Metadata

You can edit the metadata for a project.

Important! Use the metadata editor at your own risk. Removing or altering important objects in the metadata can render it inoperable.

Follow these steps:

1. [Open an existing project](#) (see page 36).
2. In the Provisioning Servers tree, right-click the endpoint type you want to edit the metadata for, then click Edit Metadata.
The Edit Metadata for Endpoint Type dialog appears and displays the metadata in an XML tree.
3. Edit the metadata as required, then click Save.
Connector Xpress redeploys the metadata.

Example: How an Administrator Modifies Metadata Manually

In this example, an administrator wants to change the display name mapping from last name to first name by manually modifying the metadata without using the mapping tree. The administrator:

1. Opens the dyn_jdbc_namespace.con project file.
2. Right-clicks the dyn_jdbc_namespace.con endpoint, then selects Edit Metadata.
3. Expands the dyn_jdbc_namespace node, and navigates to Classes, eTDYNAccount, Properties, eTDYN-str-01 in the Metadata Editor.
4. Modifies the displayName attribute from Last name to First name.
5. Modifies the beanPropertyName attribute from lastName to firstName.
6. Redeploys the modified metadata.
7. Checks that the changes have been made successfully by validating them in the Provisioning Manager.

More information:

[Projects](#) (see page 29)

[Edit Metadata for Endpoint Type Dialog](#) (see page 128)

Enumerated Values

For static enumerations, defining a new type involves:

- Creating a new unique type name
- Constructing a list of known values, each consisting of an internal value, and an optional display value

Note: Naming your new enum type int or integer does not cause any problems, however it can make maintenance of the metadata more difficult.

For query-based enumerations, define:

- A mapping to an unmanaged class
- The attributes the objects of that class have available for querying
- An association between a managed class and unmanaged class, through an appropriately chosen attribute in the former class

Metadata and Operations Bindings Editors Considerations

Important! You can use the Metadata editor to verify that the mappings you have made, however we recommend that you use the Metadata editor at your own risk. Removing or altering important objects in the metadata can render it inoperable.

Redeploy Metadata

When a connector project is open and metadata is available, you can push the metadata to the endpoint type on the Provisioning Server. You can only deploy metadata to dynamic endpoint types.

Note: If the endpoint type already has metadata, the new metadata cannot alter fundamental aspects of the data model such as adding attribute names or types.

Follow these steps:

1. [Open an existing project](#) (see page 36).
2. In the Provisioning Servers tree, right-click the endpoint type you want to deploy data to, then click Deploy Metadata.

The Deploy Metadata dialog appears.

3. Confirm that you want to deploy the metadata.

Connector Xpress deploys the metadata to the selected endpoint type and overwrites any existing metadata.

More information:

[Projects](#) (see page 29)

DYN Schema Extensions

The DYN Schema has been extended for the following attributes:

- Container objects (eTDYNContainerXXX) are extended to 10.
- Generic objects (eTDYNObjectXXX) are extended to 35.
- All capability attributes (for example, eTDYN-str-multi-ic-, eTDYN-str-ic-, eTDYN-str-c-, eTDYN-bool-c-, eTDYN-int-multi-c-, eTDYN-int-c-) are extended to 99, with the exception of the multivalued case-sensitive attributes (eTDYN-str-multi-c-), which are extended to 500.
- The noncapability multivalued case-sensitive or case-insensitive attributes (for example, eTDYN-str-multi-, eTDYN-str-multi-i-) are extended to 500.
- The generic cached (that is, data location equals BOTH) multivalued case-sensitive attributes (eTDYN-str-multi-ca-) are extended to 99. These attributes are included in every DYN object.

Cached attributes have their values stored on the provisioning server and are therefore accessible without contacting the endpoint system. Where their values are provided by the endpoint system, an explore operation is needed to update the values stored for them to match that on the endpoint system.

- Ninety-nine connection-specific cached multivalued case-sensitive attributes (eTDYN-str-multi-ca-sec-) are added for DYN Directory only. These attributes are added in the "encryptwith" line of the DYN password attribute, which can be used to obfuscate sensitive settings.

Metadata Descriptions

For more information about the metadata used in all layers of the architecture including Connector Xpress, JIAM, and CA IAM CS, see the JavaDocs in the Identity Management Bookshelf.

Using Connector Xpress as a Generic Metadata Editor

You can use Connector Xpress as a generic editor for non-JNDI or JDBC endpoint types. Using Connector Xpress as a generic editor lets you edit generic metadata that is not intended for a particular implementation bundle. For example, to edit metadata for the Scripting connector, create classes and attributes from the ground-up that are not mapped to a particular schema.

You can create and edit generic metadata in the following ways:

- Create new attributes, rather than selecting discovered attributes in the attribute mapping table.
- [Load a set of predefined custom operational attributes from a predefined dictionary file.](#) (see page 98)
- Load selected operational attributes from a predefined dictionary file.
- [Load an extended set of metadata properties from a data file.](#) (see page 97)

Create New Attributes

You can use Connector Xpress as an editor for generic metadata, and create new attributes, rather than selecting discovered attributes in the attribute mapping table. You can use this procedure to define compound type attributes or any other connector-specific attribute that is not mapped to an endpoint attribute.

Follow these steps:

1. Create [a project](#) (see page 32), and when prompted to select a Data Source, select No source.
The Endpoint Type Details dialog appears.
2. Complete the fields on the [Endpoint Type Details](#) (see page 134) dialog.
3. Expand the Classes node, then click the Attributes node of the class you want to map.
The Map Attributes dialog appears.
4. In the Maps To field, type the name of the attribute you want to add.
Connector Xpress adds the new attribute to the mapping tree.
5. Expand the Attributes node in the mapping tree, then click the new node for the attribute.
The Attribute Details dialog appears.
6. Complete the fields on the Attribute Details dialog.

Display Extended Set of Metadata Properties

You can display an extended set of metadata properties on various dialogs.

To display extended set of metadata properties

1. [Create a project](#) (see page 32), or [open an existing project](#) (see page 36).
2. Click Tools, Preferences.

The Connector Xpress Preferences dialog appears.

3. Select the Show Extended Metadata check box.

Connector Xpress displays the extended metadata properties and contains all additional metadata that is relevant to this data model item.

Note: For information about the fields displayed, see Extended Metadata Properties.

More Information:

[Endpoint Type Details Dialog](#) (see page 134)

How you Load Operational Attributes

Connector Xpress does not automatically load operational attributes, however for JNDI endpoint types, you can load operational attributes using either of the following methods:

- [Load a dictionary of custom operational attributes from a dictionary](#) (see page 98)
Each dictionary is based on a particular vendor or standard. You can select the following dictionaries:
 - CA Directory
 - RFC 2252
 - X.500
- Load a selected operational attribute to the list of all attributes of the selected structural native class.

Load Operational Attributes from a Dictionary

For JNDI endpoints, you can load a set of predefined custom operational attributes from a dictionary.

You can map operational attributes like other attributes.

Follow these steps:

1. [Create a project](#) (see page 32), or [open an existing project](#) (see page 36).
2. Click Project, Settings.
The Edit Project Settings dialog appears.
3. Select the dictionary you want to load the operational attributes from, then click OK.
4. Click the Attributes node of the class you are mapping.
The Map Attributes dialog appears.
5. Click the Edit icon to the right of the Maps to field.
Connector Xpress displays the operational attributes in the Maps To list.
6. Map the operational attributes as required.

Note: To load only some of the operational attributes, select the dictionary attribute you want to load from the list, then click the attribute you created in the mapping tree. Complete the fields on the Attribute Details dialog.

Chapter 5: Troubleshooting

This section contains the following topics:

- [Setting a Managing Connector Server for a Dynamic Endpoint Fails](#) (see page 99)
- [ID/Sequence Column Support](#) (see page 99)
- [Failed to Insert because IDENTITY INSERT is Set to Off](#) (see page 100)
- [Multiple Foreign Key Constraints](#) (see page 100)
- [The Role Definition Generator Will Not Run](#) (see page 101)
- [Tuning the Database Used by the Provisioning Server](#) (see page 101)
- [Support for Binary-type Attributes](#) (see page 101)
- [Support for Mandatory Attributes on a JDBC Endpoint](#) (see page 102)
- [Mapping Against One Endpoint and Acquiring Against Another Endpoint](#) (see page 106)
- [Table Attribute Mappings](#) (see page 106)
- [Type Mapping](#) (see page 107)
- [MySQL and Informix Stored Procedure Support](#) (see page 107)
- [JDBC Naming Attribute](#) (see page 107)
- [Sybase Stored Procedures Failure](#) (see page 108)
- [Connector Xpress Logging](#) (see page 108)

Setting a Managing Connector Server for a Dynamic Endpoint Fails

Valid on Windows and UNIX

Symptom:

Choosing a C++ Connector Server to manage your DYN endpoint fails, and an error message is displayed.

The most common reason for this failure is a mismatch of the type of endpoint type (for example, DYN) and the managing Connector Server (for example, C++ CS).

Solution:

Select a CA IAM CS to manage the dynamic endpoint type.

ID/Sequence Column Support

Connector Xpress does not currently provide mapping support of any ID/Sequence columns, for example, auto-increment Object ID column.

Failed to Insert because IDENTITY_INSERT is Set to Off

Valid on MSSQL only

Symptom:

The message Failed to Insert because IDENTITY_INSERT is Set to Off appears when you create an account. This message occurs because your database table has IDENTITY_INSERT set to off.

Solution:

Write a stored procedure to create an account, and write scripts that set IDENTITY_INSERT on before the insert operation and then sets IDENTITY_INSERT off. Do the following:

1. Write a one-line stored procedure with timing=PRE (Before) that sets IDENTITY_INSERT [database. [owner.]] { table } on.
2. Write another one-line stored procedure with timing=POST (After) that sets IDENTITY_INSERT [database. [owner.]] { table } off.

Multiple Foreign Key Constraints

If the database table mapped to accounts is associated with multiple foreign-key constraints, do either of the following:

- Write a stored procedure to delete the account and the associations the account has with other tables.
- Configure a cascading delete in the database schema.

For example, in a company inventory database, the foreign keys in the customer group table and customer order table reference a customer account table. Customer account is mapped to account and customer group is mapped to account group in Connector Xpress. When you delete an account, Connector Xpress automatically deletes any entries in the account group that relate to this account. However, Connector Xpress does not delete the customer order table. The delete operation fails because of a violation of the foreign-key constraint.

To resolve the problem, do either of the following:

- Write a stored procedure that removes any entries that are associated with the account that you want to delete *before* the actual account is deleted.
- Configure a cascading delete on the customer account, if the database vendor or schema supports this feature.

The Role Definition Generator Will Not Run

Valid on Windows and UNIX

Symptom:

When I try to run the Role Definition Generator I get the following error message:

```
java.lang.UnsupportedClassVersionErrorException
```

This occurs when an older version of the Java JRE appears before the new version in the path.

Solution:

Verify that Java 5 JRE appears before older versions in the path.

Tuning the Database Used by the Provisioning Server

We recommend that you tune your Provisioning Server. If you do not tune the Provisioning Server, performance can suffer when there are large numbers of objects stored in dynamic namespaces (JDBC and JNDI).

Use the CA Directory `dxtunedb` command if you add many objects to the Provisioning Directory. With the introduction of the dynamic namespace option, execute the following Ingres commands following each `dxtunedb` command:

- `optimizedb -zr499 -zu240 <database name> -rsubsearch -acid`
- `optimizedb -zr499 -zu240 <database name> -rdit -aparent -ardnkey -aeid`
- `sql <database name> > set trace point RD010 \g`

Support for Binary-type Attributes

If you are performing DYN mappings in Connector Xpress to perform account management using Identity Management, be aware that Identity Management does not support binary-type attributes for DYN endpoint types.

As a result, any attributes that you specified as having a binary data type in Connector Xpress are not displayed on Identity Management account management screens.

We recommend that you use Provisioning Manager to manage binary attributes on DYN endpoint types.

Support for Mandatory Attributes on a JDBC Endpoint

To support attributes that the JDBC endpoint defines as mandatory (that is, NOT NULL), but do not need to be mandatory from the provisioning point of view, the JDBC connector allows you to use an empty value for the provisioning attribute.

When you create an account and are mapping a mandatory attribute on the endpoint to a provisioning attribute that is non-mandatory, for example, a description field, and you do not enter a value for the description field, the JDBC connector maps the empty provisioning attribute to the endpoint attribute by populating the NOT NULL column on the endpoint database with spaces.

To support mapping of non-mandatory fields in Provisioning Manager, CA IAM CS contains a `NullValueClassConverter` that converts empty values in non-mandatory provisioning attributes to spaces in mandatory attributes on the endpoint.

For example, empty values can occur on a legacy database system has a description field that is NOT NULL on the table being mapped to a user account. However, the description field is not set to mandatory in the Provisioning Manager, which means you do not have to enter a description for a user to create an account. The `NullValueClassConverter` is used to store the empty value.

The property `nullValue` in the `pluginConfig` class in the `NullValueClassConverter` is set to a space by default. You can change `nullvalue` to other values, but changing `nullvalue` [requires additional configuration of the endpoint database](#) (see page 106).

For JDBC endpoints, CA IAM CS loads the converter automatically. For other types of endpoints, for example, JNDI, [manually configure CA IAM CS to load the converter](#). (see page 105)

How to Enable Support for Mapping of Non-mandatory Fields in Provisioning Manager

To enable support for mapping of non-mandatory fields in Provisioning Manager to not-null columns in a JDBC database using the JDBC connector, add the metadata attribute *useSpecialNullValue* to the Connector Xpress Dyn mapping to each attribute that you want the *NullValueClassConverter* to convert. CA IAM CS checks for the presence of this metadata attribute before enabling the converter.

Note: You can also use this procedure to enable support for other types of endpoints.

To enable support, do the following:

1. Use Connector Xpress or another editor to edit the metadata for your endpoint type.
2. Add the new Boolean metadata attribute *useSpecialNullValue* to the attribute that you want the *NullValueClassConverter* to convert, and set the Boolean value to true.

Note: Add the metadata attribute *useSpecialNullValue* to the Connector Xpress Dyn mapping to each attribute that you want to convert. CA IAM CS checks for the presence of this metadata attribute before enabling the converter.

3. Set the *isRequired* metadata attribute to false.
4. Repeat this procedure for all attributes that you want to convert.

Example: Enable support for mapping of non-mandatory fields in Provisioning Manager

This example uses Connector Xpress to edit the metadata. The Description attribute of your account is mapped to eTDYN-str-01.

Follow these steps:

1. In Connector Xpress, right-click the endpoint type you want to edit the metadata for, then click Edit Metadata.

The Edit Metadata for Endpoint Type dialog appears.

2. Expand the eTDYN-str-01 node, then select the metadata subnode.
3. Click the Add button.

Connector Xpress adds a new metadata attribute node to the tree.

4. Name the new metadata node *useSpecialNullValue*.

5. Select Boolean from the type drop-down list.

6. Select the check-box next to the drop-down list.

The value of the *useSpecialNullValue* attribute is set to *true*.

7. Select the *isRequired* metadata attribute on eTDYN-str-01.

8. Clear the check-box next to the drop-down list.

The value of the *isRequired* attribute is set to *false*.

How to Enable Support for Mandatory Attributes on Endpoints other than JDBC Endpoints

To support endpoints other than JDBC endpoints that define attributes as mandatory (that is, NOT NULL), but do not need to be mandatory from the provisioning point of view, do the following:

1. [Configure CA IAM CS to load the NullValueClassConverter.](#) (see page 105)
2. [Enable support for mapping of non-mandatory fields in Provisioning Manager.](#) (see page 103)

Configure CA IAM CS to Load the NullValueClassConverter

The NullValueClassConverter plugin is shipped with the JDBC connector. To use the NullValueClassConverter for endpoints other than JDBC endpoints, configure CA IAM CS to load the converter.

Note: The converter is loaded automatically for JDBC endpoints.

Note: The property *metadataPropNames* has a value of *useSpecialNullValue*. Add the *metadataPropNames* metadata attribute to the Connector Xpress Dyn mapping for each attribute that the plugin handles. CA IAM CS checks for the presence of this metadata attribute before enabling the plugin.

To enable the plugin, configure the plugin in an override connector.xml for your endpoint.

Follow these steps:

1. Rename the file SAMPLE.connector.xml in C:\Program Files\CA\Identity Manager\Connector Server\conf\override\jdbc to connector.xml.
2. Add the following entries in the connector.xml file:

```
<property name="classPluginConfigs">
  <list>
    <bean class="com.ca.jcs.cfg.MetaPluginConfig">
      <property name="pluginClass">
        <value>com.ca.jcs.converter.meta.NullValueClassConverter</value>
      </property>
    </bean>
  </list>
</property>
<property name="pluginConfig">
  <bean
    class="com.ca.jcs.converter.meta.NullValueClassConverter$NullValueConverter
    Config">
    <property name="nullValue">
      <value> </value>
    </property>
  </bean>
</property>
<property name="metadataPropNames">
  <list>
    <value>useSpecialNullValue</value>
  </list>
</property>
```

```
</property>
</bean>
</list>
</property>
```

Note: The property *nullValue* in the pluginConfig class in the NullValueClassConverter is set to a space by default. To change the null value that the plugin uses, change the nullValue in the config bean.

Change the Default Value Used to Store an Empty Value

The property *nullValue* in the pluginConfig class in the NullValueClassConverter is set to a space by default. To change the default value used to store an empty value, change the nullValue in the config bean in the class plugin config of your connector.xml file.

Mapping Against One Endpoint and Acquiring Against Another Endpoint

If you perform mapping against one endpoint and acquire a directory referring to another, verify that they have the same tables and stored procedures (JDBC) or LDAP schema (JNDI).

Table Attribute Mappings

When you define your table and attribute mappings, you can make the various choices in the Type field on the Map Class and Attribute dialog. The choices you make define which predefined attribute is used and what the attributes behavior is.

If you select the Synchronized check box on the Attribute details dialog Connector Xpress determines the synchronization type from the attribute's data type automatically.

For example, the choices you make set the limits on how many predefined attributes there are for that type and behavior. The following table shows the limits:

Type and behavior	Limit
single-valued non-capability integer	10
single-valued capability integer	99
multivalued non-capability integer	10

Type and behavior	Limit
multivalued capability integer	99
single-valued sensitive non-capability string	30
single-valued insensitive non-capability string	30
single-valued sensitive capability string	99
single-valued insensitive capability string	99
multivalued sensitive non-capability string	500
multivalued insensitive non-capability string	500
multivalued sensitive capability string	500
multivalued insensitive capability string	99
single-valued non-capability Boolean	10
single-valued capability Boolean	99
single-valued binary	10

Type Mapping

In Connector Xpress, an *edittype=int* maps to a plain LDAP string attribute, unless you explicitly request integer sync.

MySQL and Informix Stored Procedure Support

Connector Xpress does not support the following stored procedures from the following vendors:

- **MySQL**—MySQL stored procedure parameters are not accessible through the required JDBC method and therefore are not supported.
- **Informix**—Informix supports stored procedures with the same name but different parameters. This makes listing the stored procedures and their parameters problematic, and therefore are not supported.

JDBC Naming Attribute

You can only map the account and group naming attributes to columns which are required in the native table they are mapped to. That is, an attribute that does not allow null values. You are advised to verify that these columns act as primary keys for the tables containing them, or at the least, have a unique index applied to them.

Sybase Stored Procedures Failure

Valid on Windows and UNIX

Symptom:

The following exception is reported when invoking Sybase stored procedures:

Nested exception is com.sybase.jdbc3.jdbc.SybSQLException: Stored procedure 'AddObject_Instead_Parameter' may be run only in unchained transaction mode. The 'SET CHAINED OFF' command will cause the current session to use unchained transaction mode.

Solution:

CA IAM CS requires that Sybase stored procedures have the set chained option to on. Set the chained option to on for all Sybase stored procedures.

Connector Xpress Logging

Connector Xpress log messages are written to this file:

im_home\Connector Xpress\logs\conxp-log.txt

Note: The generated metadata is usually the primary resource about the problem being diagnosed. We recommend that you analyze the generated metadata using the Connector Xpress log files.

Chapter 6: Screens and Dialogs

This section contains the following topics:

- [Account Screens Dialog](#) (see page 110)
- [Attribute Details Dialog](#) (see page 111)
- [Class Associations Dialog](#) (see page 118)
- [Connector Server Details Dialog](#) (see page 118)
- [Create New Endpoint Type Dialog](#) (see page 119)
- [Create New Endpoint Dialog](#) (see page 120)
- [Create Operation Binding Dialog](#) (see page 121)
- [Custom Types Dialog](#) (see page 123)
- [Direct Association Dialog](#) (see page 125)
- [Edit Connector Server Configuration Dialog](#) (see page 127)
- [Edit Metadata for Endpoint Type Dialog](#) (see page 128)
- [Edit Project Settings Dialog](#) (see page 129)
- [Edit Script Dialog](#) (see page 129)
- [Edit Source Dialog](#) (see page 130)
- [Endpoint Class Dialog](#) (see page 132)
- [Enter Password for Data Source Dialog](#) (see page 133)
- [Endpoint Type Details Dialog](#) (see page 134)
- [Explore/Correlate Endpoint Dialog](#) (see page 135)
- [Extended Metadata Properties](#) (see page 136)
- [Indirect Association Dialog \(JDBC only\)](#) (see page 139)
- [Mapped Classes Dialog](#) (see page 141)
- [Map Attributes Dialog](#) (see page 141)
- [Map Class Dialog \(JNDI\)](#) (see page 144)
- [Map Class Dialog \(JDBC\)](#) (see page 145)
- [Map Compound Class and Attributes Dialog \(JDBC\)](#) (see page 146)
- [Mapped Containers Dialog](#) (see page 150)
- [Map Container Class Dialog \(JNDI\)](#) (see page 150)
- [Merge XML Dialog](#) (see page 155)
- [Operations Bindings Editor](#) (see page 155)
- [Operation Bindings – Stored Procedure Editor](#) (see page 156)
- [Operation Bindings – Operations Editor](#) (see page 159)
- [Preferences Dialog](#) (see page 160)
- [Provisioning Server Details Dialog](#) (see page 161)
- [Provisioning Server Password Required Dialog](#) (see page 162)
- [Script Editor Dialog](#) (see page 162)
- [Script Name Dialog](#) (see page 164)
- [Scripts Dialog](#) (see page 164)
- [Select Data Source for new project Dialog](#) (see page 165)
- [Select Template Dialog](#) (see page 166)
- [Source Types Dialog](#) (see page 166)
- [Wizard Summary Dialog](#) (see page 167)

Account Screens Dialog

The Account Screens dialog allows you to group mapped attributes logically into groups and subgroups. These attributes appear as tabs and pages in the Identity Management User Console account screens. You can use this dialog to design the account screens that you use to edit the accounts on the endpoint in Identity Management. Connector Xpress saves the groupings made on this screen in the metadata. You can then use this metadata in the Role Definition Generator to generate the appropriate screen definitions and import them into Identity Management.

Note: For more information, see *How you Generate Identity Management User Console Account Screens* in the *Connector Xpress Guide*.

The following fields define the way the attributes appear on the tabs and page sections in the account screens in the Identity Management User Console.

Connector Xpress groups common attributes into the following default account screen layouts:

Account

Defines the login, password, and status information for the endpoint account.

Login page section

Defines the login information for the endpoint account.

Password page section

Defines the password information for the endpoint account.

Status page section

Defines the status information for the endpoint account.

User

Defines the personal identification details of the user.

Name page section

Defines the name of the user.

Organization page section

Defines the organization the user belongs to.

Contact

Defines all contact and address information for the user.

Internet page section

Defines internet contact details of the user.

Address page section

Defines the address of the user.

Phone page section

Defines the telephone contact details of the user.

Membership

Defines all membership details of the user.

Add Tab

Adds a new tab. This tab appears in Identity Management User Console account screens.

Add Page Section

Adds a new page section to the selected tab. The page section appears on the specified tab in Identity Management User Console account screens.

Add Attribute drop-down

Specifies the attribute you want to add to the selected page section. The attribute appears on the specified page and tab in Identity Management User Console account screens.

Attribute Details Dialog

The Attribute Details dialog lets you define logical parameters that control how a specific provisioning attribute is handled.

This dialog contains the following fields:

Name

Defines the name of the attribute. This label appears in user interfaces to represent the attribute.

Description

(Optional) Describes the attribute.

Connector Map To

Specifies which name to map an object class (including the connector itself) or attribute to in connector-speak. For a dynamic connector, this attribute specifies the name of the native system item to map the attribute to. For example, a JDBC-based connector would probably map an object class to the name of a database table, and each property within it to the name of one of its columns.

Default Value

(Optional) Specifies the default value for the attribute.

Note: Only clients use this value (for example, user interfaces). If the client does not supply a value, the Provisioning Server does not use it by default.

Required

If selected, specifies that the endpoint requires that this attribute is present in all objects of this type.

Note: If the endpoint schema requires this attribute to be present, Connector Xpress automatically selects the check box, and you cannot clear the check box.

Minimum Length

Specifies the minimum byte length of values for this attribute value.

This value is used for input validation in Identity Management account screens.

Maximum Length

Specifies the maximum byte length of values for this attribute value.

This value is used for input validation.

Allowed Operations

Specifies the operations you can perform on this attribute. Select at least one of the following options:

Create

Specifies whether the value of the attribute is set when creating an object instance of the parent class.

Read

Specifies whether value of the attribute is read when viewing an object instance of the parent class.

Modify

Specifies whether value of the attribute is set when modifying an object instance of the parent class.

Minimum Value

(Numeric attribute types) Specifies the minimum value you can set for this attribute.

Maximum Value

(Numeric attribute types) Specifies the maximum value you can set for this attribute.

Data type

Specifies the data type of the provisioning attribute that you have mapped to the native attribute.

Binary Data

Defines an attribute whose value is arbitrary binary data.

Boolean

Specifies logically true or false in XML, but represented by the Provisioning Server and JIAM APIs as 1 or 0 in LDAP attribute values.

Date

Specifies a date.

Example: 1999-05-31

Note: The Dynamic Namespace plug-in to Provisioning Manager supports the years from 1800 through 9999. Other components of the solution impose no such restrictions and can represent virtually any year in recorded history.

Date & Time

Specifies a particular time on a particular day.

Example: 1999-05-31T13:20:00

Note: The Dynamic Namespace plug-in to Provisioning Manager supports the years from 1970 through 2036, so you must use Date to represent days falling outside of this range.

Note: Vendor differences complicate how Connector Xpress handles time-related columns. For example, MSSQL "DATETIME" signifies a DateTime value whereas other vendors use the standard "TIMESTAMP", and MSSQL TIMESTAMPS are automatically generated binary values. Also, Oracle does not support a "TIME" type and its "DATE" type is also effectively a TIMESTAMP. Therefore, to remain vendor-neutral, Connector Xpress allows you to map to any of Date/DateTime/Time whenever it makes sense for you to do so.

Double-precision floating-point

Specifies a double-precision 64-bit floating-point value.

Enumeration - enumeration type name

Specifies an attribute with a fixed list of enumerated values.

Flexi-DN

Specifies a distinguished name string format.

For example, "cn=Bob,ou=Sales,o=ExampleCorp". The connector enforces this.

Flexi-Email

Specifies an email address string format.

Flexi-Quoteless

Specifies that quotes are removed from attribute values.

Floating Point

Specifies a single-precision 32-bit floating-point number.

Integer

Specifies a 32-bit value between -2147483648 and 2147483647.

Long Integer

Specifies a 64-bit value from 9223372036854775808 through 9223372036854775807.

String

Specifies an unrestricted field.

Time

Specifies an offset of between 0 seconds and 23:59:59.

Example: 13:20:00

Force Case

Specifies the case of the connector-speak value of a string.

Upper

Specifies that the case is set to uppercase.

Example: If set to upper, *String* is set to *STRING*

Lower

Specifies that the case is set to lowercase.

Example: If set to Lower, *STRING* is set to *string*.

Preserve

Specifies that the case of the string is preserved.

Note: The endpoint might not enforce case-sensitive searching, so a search for "EXAMPLE" can still match "eXaMpLe" on the endpoint system.

Multi-valued

If selected, specifies that this attribute is multi-valued.

JNDI: Selected only if the native attribute is multi-valued. Read-only if native attribute is single valued.

JDBC: Default is unselected.

Flattening Style

(JDBC only) Specifies the flattening style you want to use.

CSV (comma-separated value)

Specifies that the multiple values of the attribute are comma-separated.

SQL

Specifies that the multiple values of this attribute are in SQL format.

XML

Specifies that the multiple values of this attribute are in XML format.

Trim Whitespace

Specifies whether Connector Xpress trims leading and trailing whitespace from the attribute's value.

Sensitive

Specifies whether user interfaces use asterisks to mask the attribute's value.

Boolean Values

Overrides the default 0 and 1 symbolic values for false and true values for Boolean attribute types.

True

Specifies the symbolic value used for *true*.

False

Specifies the symbolic value used for *false*.

Value Conversion

Sets the metadata value for isStoreSymbolic or isStoreNumeric.

(Default) Pass-through

Specifies that Boolean (and enum) values are written as their numeric counterparts.

Symbolic

Specifies that numeric text is expected in LDAP but that equivalent symbolic values are stored in connector-speak. That is, boolean and enum attributes are written as their symbolic value.

Numeric

Specifies that Boolean (and enum) values are written as their numeric counterparts. That is, boolean and enum attributes are written as their numeric values.

Note: This option is only available for Boolean and (static) Enumerations data types. When both boolean values fields are set, this value changes to Symbolic, as setting boolValues has no effect.

Account Template Value

Specifies how the default value for this attribute is generated used in the default account template.

None

Specifies that this attribute does not have a value in the default account template.

By Value

Specifies the value of this attribute used in the default account template.

By Rule String

Specifies that the value of this attribute used in the default account template is generated by a rule string.

Note: For more information about Rule Strings, see the *Identity Management Administration Guide*.

Synchronized

Specifies whether this attribute is updated when this account is synchronized with its templates.

Cached

Specifies that the attribute is stored by the Provisioning Server and can be retrieved without consulting the endpoint system.

For example, credentials used to connect to the endpoint system must be cached, otherwise the user might have to provide the credentials every time the connector is acquired. You may also need to cache a value because querying an endpoint system for the value can take a long time to compute.

Well Known Name

Specifies whether this attribute is a *well-known* attribute.

JavaBean Property Name

Specifies the JavaBean Property name used for this attribute in the JIAM API. If you select a value in the Well-Known Name list, you cannot edit this value.

Expensive Retrieval

Specifies that this attribute's value may be too expensive to return in general searches. If selected, searches only return the attribute value if explicitly asked for.

Converter Regex

This feature does not work. If you want to convert your data using regular expressions, create a new flexi string type for any attributes that you want to convert and add the conversion to the override connector XML file for the connector type.

UI Field Length (String types only)

Specifies the recommended character width of the user interface input field for this attribute. If not used, Connector Xpress uses the attributes data type and maximum length to define an appropriate input field length.

Connector Generator

Specifies the generator expression used by the CA IAM CS.

To pass the value to the endpoint system literally, enclose the expression in double quotes.

Example: `"NEXT VALUE FOR my_sequence"`

If you do not enclose the expression in double quotes, the connector must know how to interpret the value. For example, JDBC knows the value provided is a sequence name.

Example: `'my_sequence'`

Is Connector Generated

Specifies that that the value for property is generated implicitly by the endpoint. For example, *true* for IDENTITY columns in JDBC.

Extended Properties

Displays an extended set of metadata properties. These fields are displayed when you select the [Show extended set of metadata properties](#) (see page 97) on the [Connector Xpress Preferences dialog](#). (see page 160)

Note: For more information, see Extended Metadata Properties.

Class Associations Dialog

The Class Associations dialog lets you specify the classes you want to create direct and indirect association with.

This dialog contains the following fields:

Create direct association with

Specifies the class you want to create a direct association with.

Create indirect association with

(JDBC only) Specifies the class you want to create an indirect association with.

Associated with

Displays the name of the associated class.

Association attribute

Displays a brief summary of the association.

Remove

Removes the association from the Mapping Tree.

Connector Server Details Dialog

You can use this dialog to configure Connector Servers that manage connectors using the standalone CA IAM CS.

This dialog contains the following fields:

Host Name

Defines the name of the host where the Connector Server is located.

Port

Defines the port used to connect to the CA IAM CS

Bind DN

Defines the user name used to connect to the Connector Server in DN format.

Use TLS

Specifies that a secure TLS connection to the connector server is established. This means that the connector does not transmit the password in clear text. If not selected, the connector transmits the password in clear text.

Default: Selected

Key

Defines the name of the configuration option that the connector uses to connect to the Connector Server.

Value

Defines the value of the configuration option.

Key column

Displays the full list of configuration options that the connector uses to connect to the Connector Server.

Value column

Displays the corresponding values for the configuration options displayed in the Key column.

Create New Endpoint Type Dialog

The Create New Endpoint Type dialog lets you define the name of the endpoint type and optionally, the connector server you want to use to manage the endpoint type.

This dialog contains the following fields:

New Endpoint Type

Defines the name of the endpoint type you want to create.

Connector Xpress automatically provides a name for the endpoint type based on the value entered in the Define Endpoint dialog. You can accept the default or enter another name.

Note: If you include any spaces in the name, they are converted to underscores.

Connector Servers

Specifies the connector server you want to manage the new endpoint type.

More Information:

[Create an Endpoint Type](#) (see page 89)

Create New Endpoint Dialog

The Create New Endpoint dialog lets you create an endpoint for JDBC and JNDI connectors.

This dialog contains the following fields:

LDAP URL (Required)

(JNDI only) Specifies the LDAP URL.

Base DN (Required)

(JNDI only) Specifies the top level of the DIT (Directory Information Tree) you want to manage within the directory endpoint.

Use TLS (Required)

(JNDI only) Specifies that the CS uses TLS connections between the CS and directory endpoint.

LDAP Version (Required)

Defines the LDAP version.

Note: This field only appears on existing endpoints that have this attribute set to *isRequired=true*. The attribute does not appear for any new projects created with Connector Xpress, as Connector Xpress sets the attribute *isRequired* to false by default in the JNDI metadata.

Endpoint Name (Required)

(JDBC and JNDI) Defines the endpoint name. We recommend that you use a descriptive name for your endpoint.

Password (Required)

(JDBC and JNDI) Specifies the password that is used to log on to the target endpoint.

Bind User DN (Required)

(JNDI only) Specifies the distinguished name of the user used to bind to the directory endpoint.

Connection URI (Required)

(JDBC only) Specifies the secure connection URI.

Username (Required)

(JDBC only) Specifies the username used to log on to the target database.

More Information:

[How You Acquire and Manage Endpoints](#) (see page 88)

[Acquire, Explore, and Correlate an Endpoint](#) (see page 88)

Create Operation Binding Dialog

This dialog lets you specify operation binding information.

This dialog contains the following fields:

Available object classes

Displays the object classes you can create operation bindings for.

Added object classes

Lets you specify the object classes you want to apply the operation binding to.

Stored Procedure

(JDBC only) Specifies the operation binding is set to JDBC stored procedure type.

Script

Specifies the operation binding is set to scripting style type.

Available Operations

Specifies the available operations that this operation binding can be bound to.

Add

Creates an object on the managed system.

Modify

Modifies the object on the managed system.

Delete

Deletes the object on a managed system.

Modify-Rn

Renames the object on a managed system.

Move

Moves the object from one location to other location on the managed system.

Activate

Activate the connector making it visible to the outside world. This method is called when the connector has been fully initialized, and is ready to receive requests.

Deactivate

Deactivates the connector making it invisible to the outside world. This method is called when the connector is no longer needed and tidies any connections or resources that it holds.

Lookup

Looks up the object on the managed system.

Search

Searches objects on the managed system.

Move-Assocs

Updates association attributes after the target object is moved on the managed system.

Modify-Rn-Assocs

Update association attributes after the target object is renamed on the managed system.

Delete- Assocs

Delete all associations referencing target object on the managed system.

Add-Attr-Assocs

Adds association to the target object on the managed system.

Remove-Attr-Assocs

Move association from the target object on the managed system.

Lookup-Assocs

Lookup all associations for the target object on the managed system.

Search-Assocs

Search all associations for the target object on the managed system.

Modify-Update-Attrs-Assocs

Updates the reverse associative membership list based on changes to the target object on the managed system.

Assoc-Update-References-To

Updates all reverse associative pointers referring to the target object on the managed system.

Assoc-Search-For-References-To

Returns search results (in connector-speak) for each instance of association's class which references the target object, given a target object and an association.

Post-Query-Attributes

Run on attributes returned by LOOKUP and for each result returned by SEARCH, where search results can still be streamed.

Post-Query-Search-Result

Run before each search result is returned.

Timing

Specifies when the operation binding is executed.

Before

Specifies that the connector executes the operation binding before the specified LDAP operation.

After

Specifies that the connector executes the operation binding after the specified LDAP operation.

Instead Of

Specifies that the connector executes the operation binding instead of the specified LDAP operation.

Note: If you do not select an object class, this operation binding is applied to all mapped object classes.

More information:

[Operation Bindings](#) (see page 59)

Custom Types Dialog

The Custom Types dialog lets you define arbitrary strings (formatted string types) you want to use as metadata types in attribute mappings. The strings you define appear as attribute types you can map in the Type list in the Map Class and Attributes dialog. This dialog also lets you define any static or dynamic enumerations for your attribute.

Some predefined formatted string types are available by default (for example, email, DN, and quoteless), because these formatted strings are already known to the CA IAM CS framework. Handlers for these types are on the connector server.

Note: For more information about creating new formatted string type code, and the steps required for adding support to a custom type, see the *Connector Programming Guide*.

This dialog contains the following fields:

Formatted String Types

Lists the custom strings you can use as metadata types in attribute mappings.

Name

Displays the names of the defined formatted string types.

DN

Specifies a distinguished name string format.

Quoteless

Specifies that quotes are removed from attribute values.

Email

Specifies an e-mail address string format.

Add

Lets you add a new custom string to the Formatted String Types list.

Remove

Removes a custom string type from the Formatted String Types table.

Enumerated Types

Lets you define static enumerated types for use as attribute.

Name

Displays the name of the static enumerated types you defined.

Suspended

Defines the state of suspension the account is in.

Endpoint Groups

Defines the enumerated identifiers for the Endpoint screen tabs and page sections on the Accounts screen.

Groups

Defines the enumerated identifiers for the Account screen tabs and page sections.

Add

Adds a new enumerated type.

Remove

Removes the selected enumerated type.

Values

Displays the value of the selected enumerated type.

Value

Defines the value of the enumerated type used on the endpoint system.

Display Name

(Optional) Defines the name of the enumerated type displayed in the Identity Management User Console and Provisioning Manager.

Ordinal

(Optional) Defines the order of the enumerated values.

Add

Lets you define a value for a new enumerated type.

Remove

Removes a previously defined value for an enumerated type.

Compound Type Classes

Lets you map the contents of another class to a provisioning attribute.

Name

Displays the names of the compound classes you have added.

Add

Adds a compound class to the mapping tree.

Remove

Removes a compound class from the mapping tree.

Direct Association Dialog

The Direct Association dialog lets you specify a direct association between any two classes of objects. Associations of this type are always directional of the form *from Class1 to Class2*.

You can also use this dialog to establish reverse association that maps an association between the same classes, but in the opposite direction.

Most bi-directional associations have a physical attribute on one class and a virtual attribute on the other class. We recommend that you define the physical association attribute first.

This dialog contains the following fields:

Physical Attribute

Specifies the physical attribute through which an association is made. The attribute is physical in the sense that it exists on the native system.

Virtual Attribute

Specifies an attribute that forms part of the association, but that does not exist on the native system. CA IAM CS computes the attribute. The attribute is not persisted on the native system.

Typically in JNDI, memberof is an example of a virtual attribute. The native systems only store associations in one direction from group to account. A virtual attribute allows you to create an association from account to group instead.

By Attribute

Specifies the association attribute of the target class that the association attribute of the source class references.

Value Template

Specifies a formatted attribute value to match against. For example, in some cases, the association attribute for the target class is more complex than the value of the association attribute for the source class. By default, non-DN association attributes are assumed to hold values that exactly correspond to the values of the name or alternative key of the "to" class. If the association attribute has some internal structure, then you can use the template field to help you deal with the structure when creating an association.

The template value can contain the string `${name}` or `${dn}`. When creating an association, `${name}` is replaced with the simple name of the related object, and `${dn}` is replaced by its full DN.

By Filter

Specifies a particular LDAP filter to use to match the target class's attribute. This is specified as an LDAP search filter, where a string of the form `${attributeName}` replaces the value of the corresponding attribute of the *from* class at run time.

Use as a Base Association

Allows you to select an existing association and base the results of the new association on the existing association, but altering those results somehow, for example, adding association results that appear due to nesting.

Objects Must Exist

Specifies that the Connector Server checks that the referenced object exists before it adds it to an association. This check box also affects the reverse association if any. That is, this check box applies to both the source and target class, in either direction.

Use DNs in Attributes

Specifies the values that are persisted on the native system. If selected, flags that the full native DN values are stored. For example, cn=myaccount, ou=myorgunit, rather than just the naming attribute value from a DN, such as myaccount.

Association is Nested

Specifies whether associations between group classes are nested. For example, a single association definition can satisfy “groups of groups of groups” relationships.

Include a Reverse Association

Displays the Reverse Association part of the dialog.

Edit Connector Server Configuration Dialog

The Edit Connector Server Configuration dialog lets you set the hosting, routing, and managed connector information for the server.

This dialog contains the following fields:

Connector Server Host Name

Defines the host name of the computer running the connector server.

Port

Defines the TCP port on the connector server used for non-TLS connections.

TLS Port

Defines the TCP port on the connector server used for TLS connections.

Use TLS

Specifies that the connections between the Provisioning Server and the connector server are encrypted TLS connections. If not selected, connections between the Provisioning Server and the connector server are in clear text.

Provisioning server (optional)

Lets you specify the Provisioning Server you want to operate on, as opposed to the Provisioning Server that is selected in the Provisioning Servers tree.

Password

Defines the password used to access the connector server. You usually configure this password when you install the server.

Note: If you edit the Connector Server Host Name, Ports, or Use TLS fields, reenter the password.

Make this the default CS

Specifies that the Provisioning Server uses this connector server as the default.

Note: Any branch (endpoint type or endpoint) that is not explicitly associated with a CS Config is routed through the default CS. As a result, a mismatch may happen if you create an endpoint type or endpoint without explicitly specifying the managing Connector Server. For example, when the default CS is the C++ Connector Server and you have created a dynamic endpoint type without explicitly specifying a CA IAM CS as the managing Connector Server.

Important! You can select this check box for multiple connector servers on a single Provisioning Server. If you select this check box, a random CS is chosen when the request is routed.

Object Handle

Specifies the object handles of the endpoint types the selected Provisioning Server is managing.

Note: We recommend that you manage this list using the Set Managing Connector Server procedure.

More Information:

[Edit a Connector Server Configuration](#) (see page 77)

[Create a Connector Server Configuration](#) (see page 76)

[How to Set a Managing Connector Server](#) (see page 76)

Edit Metadata for Endpoint Type Dialog

The Edit Metadata for Endpoint Type dialog lets you manually edit metadata.

This dialog contains the following fields:

Node Type

Displays a list of possible node types that you can add using the Add button. The contents of the list depend on the type of node currently selected in the XML tree.

Add

Lets you add a new node to the XML tree of the type specified in the Node Type drop-down list.

Edit

Lets you edit the currently selected node in the XML tree.

Remove

Lets you remove the currently selected node from the XML tree.

XML Tree

Displays an XML tree view of the metadata that you can edit.

Export

Lets you export a data model to an XML file.

More Information:

[Edit Metadata](#) (see page 93)

Edit Project Settings Dialog

The edit project settings dialog lets you edit the settings for a project.

This dialog contains the following fields:

Project File Comment

Defines free-form comments for your project.

Metadata Dictionaries

Specifies the dictionaries you can use to load a set of predefined custom operational attributes.

Edit Script Dialog

This dialog lets you specify the parameters for scripts.

Script Language

Specifies the available scripting languages that CA IAM CS framework currently supports.

More information:

[Bind Operations to Scripts](#) (see page 63)

[Scripts](#) (see page 60)

Edit Source Dialog

The Edit Source dialog lets you specify the name and connection details for your data source. For JDBC data sources, this dialog lets you construct an appropriate JDBC URL for the database you select. For JNDI data sources, the dialog lets you specify the details of an LDAP connection.

Note: The fields in this dialog vary, depending on the type of data source selected.

This dialog contains the following fields:

Name

Specifies the name of the data source.

Note: We recommend that you chose a name that clearly describes what the data source is for.

Server Name

Specifies the host name of the server you want to access.

Host Name

(Informix Dynamic Server) Specifies the name of the Informix server.

Database Type

(JDBC only) Specifies the type of database connection you want to make:

- DB2
- DB2 for IBMi
- Informix Dynamic Server
- Microsoft SQL Server
- MySQL
- Oracle
- Sybase Adaptive Server Enterprise
- Other

Username

(JDBC only) Specifies the username the connector uses to log on to the target database endpoint.

Defaults:

Oracle: System

Microsoft SQL Server: sa

DB2: db2admin

Native

(JDBC and MS SQL Server only) Specifies that MSSQL Native Authentication on Windows is activated. The following is added to the JDBC URL used for the connection:

```
integratedSecurity=true
```

Server name

(JDBC only) Specifies the hostname of the database server.

SID

(JDBC and Oracle only) Specifies the Oracle SID.

Port

Specifies the port number the connector uses for communication with the endpoint.

Defaults

JNDI: 389

Oracle: 1521

Microsoft SQL Server: 1433

DB2: 6789

Ingres: 117

Informix Dynamic Server: 9088

MySQL: 3306

Database

(JDBC only) Defines the database name (most vendors including MS SQL) or its SID (Oracle).

Defaults

Microsoft SQL Server: master

Oracle SID: ORCL

JDBC URL

(JDBC only) Defines the JDBC URL. Connector Xpress automatically forms the URL as you complete the previous fields.

Note: To edit this field, select the Edit check box.

Bind DN

(JNDI only) Defines the distinguished name of the user used to bind to the directory endpoint.

Anonymous

(JNDI only) Specifies that no bind DN is used and instead, an anonymous bind to the directory endpoint is used.

Use TLS

Specifies that Connector Xpress uses TLS connections between Connector Xpress and the endpoint.

Base DN

(JNDI only) Defines the top level of the DIT (Directory Information Tree) you want to manage within the directory endpoint.

Edit

(JDBC only) Lets you edit the JDBC URL field.

Test

Attempts to connect to the specified directory or database using the information provided.

More Information:

[Create a Project](#) (see page 32)

[Set Up Data Sources](#) (see page 14)

Endpoint Class Dialog

The Endpoint Class dialog lets you create new attributes to map, rather than selecting discovered attributes in the attribute mapping table. You can also load a set of predefined attributes from a dictionary into the attribute mapping table.

This dialog contains the following fields:

Name

Defines the name of the class you are mapping.

Limits: Must begin with a letter.

Description

Describes the class you are mapping.

Connector Map To

Specifies which name to map an object class (including the connector itself) or attribute to in connector-speak. For a dynamic connector, this attribute specifies the name of the native system item to map the attribute to. For example, a JDBC-based connector would probably map an object class to the name of a database table, and each property within it to the name of one of its columns.

Note: If you are mapping an Endpoint class, set this field to *connector* as the an Endpoint class is not mapped to a native object.

Managed

If unchecked, marks this class as mapped only for the purpose of establishing associations. As a result, Connector Xpress only maps its name and type. Instances of an unmanaged class can be listed and associated with other objects, but cannot be created, edited or deleted.

For compound classes, Connector Xpress selects this field by default, and cannot be cleared.

Add Dictionary Attribute

Loads a set of predefined custom operational attributes from a dictionary and displays the attributes in the mapping tree.

Note: This field is available when you specify that you want to load operational attributes from a dictionary.

Extended Properties

Displays an extended set of metadata properties. These fields are displayed when you select the [Show extended set of metadata properties](#) (see page 97) on the [Connector Xpress Preferences dialog](#). (see page 160)

Note: For more information, see Extended Metadata Properties.

Enter Password for Data Source Dialog

Use the Enter Password for Data Source dialog to specify the password for the data source used for the basis of the connection.

This dialog contains the following fields:

Source name

Displays the name of the data source specified when Connector Xpress creates the data source.

Source URL

Displays the connection URL of the data source.

Source type

Displays the type of the data source (for example, JNDI, JDBC).

User name

Displays the name of the user used to connect to the data source.

Password

Specifies the password of the user Connector Xpress uses to connect to the data source.

More Information:

[Create a Project](#) (see page 32)

[Edit a Project](#) (see page 36)

Endpoint Type Details Dialog

The Endpoint Type Details dialog lets you specify the name, description, and version number of the endpoint type you want to define.

This dialog contains the following fields:

Name

(Mandatory) Specifies the name of the endpoint type.

Note: The name cannot contain the characters #/\ [] ; : | = . , + * ? < > @ () and any spaces are converted into underscores.

If you enter any of these characters, Connector Xpress displays a warning. We recommend that you remove these characters from your existing metadata.

Description

Specifies the extended description of the endpoint type.

Version

Specifies the version number for the endpoint type. Specifying a version can be useful when modifying a Connector Xpress project file to record incremental changes. Specifying a version does not have a logical effect in the dynamic connector.

Extended Properties

Displays an extended set of metadata properties. These fields are displayed when you select the [Show extended set of metadata properties](#) (see page 97) on the [Connector Xpress Preferences dialog](#). (see page 160)

Note: For more information, see Extended Metadata Properties.

Explore/Correlate Endpoint Dialog

The Explore/Correlate Endpoint dialog lets you specify how you want to explore and correlate the endpoint.

This dialog contains the following fields:

Explore Endpoint first endpoint

Specifies whether this endpoint is explored to find undiscovered accounts and groups.

Sub Tree

Specifies that all the containers in the subtree are included in the endpoint exploration.

One Level

Specifies that only one level of containers are included in the endpoint exploration.

Correlate Accounts with Users

Specifies whether global user accounts are correlated with information found in accounts and groups on the endpoint system.

Use existing Users

Specifies that the correlation links each account to the user with the same name. The correlation links only existing users; none are created.

Create Users as needed

Specifies that the correlation links each account to the user sharing the same name. If the user does not exist, the correlation process creates the user.

More Information:

[How You Acquire and Manage Endpoints](#) (see page 88)

[Acquire, Explore, and Correlate an Endpoint](#) (see page 88)

Extended Metadata Properties

The following fields are displayed on Connector Xpress dialogs when you [select the Show extended set of metadata properties](#) (see page 97) on the [Connector Xpress Preferences dialog](#) (see page 160).

Connector Xpress displays the fields on the following dialogs:

- [Endpoint Type Details dialog](#) (see page 134)
- Map Class and Attributes dialog (JDBC)
- Map Class and Attributes Dialog (JNDI)
- [Map Compound Class and Attributes dialog](#) (see page 146)
- Attribute Details dialog
- [Endpoint Class dialog](#) (see page 132)
- [Map Container Class dialog](#) (see page 150)

Note: Not all fields are displayed on all dialogs.

Assoc Obj Key Attr

Targets any indirect association property. Alternate key used to name the parent class of the target property that is, not the referenced class.

Assoc Ref Object Class

Defines a relationship from an obj type to a referenced obj type, where a direct association through an attribute and an indirect association through a table external to both object types are supported.

Assoc Reverse Attr

Targets any direct association property, names attribute in the referenced class (that is, not the parent of target property) which contains association information in the reverse direction.

Assoc Table

Targets any indirect association property, names table which stores association links.

Assoc Table Obj Column

Targets any indirect association property, specifies column in table named in \${MD_ASSOC_TABLE} which contains references to class which is parent of target property.

Assoc Table Ref Column

Targets any indirect association property, specifies column in table named in \${MD_ASSOC_TABLE} which contains references to referenced class (that is, not the parent class of target property).

Assoc Type

When true specifies that target attribute specifies an association between a parent object and its compound value child objects.

Connector Generated Override

Specifies how to handle attempts to override generated attribute values in LDAP ADD requests.

Connector Generator

Generator name (or literal expression passed to the endpoint if surrounded in `\`'s) which specifies the value assigned to the property

Example: `\my_sequence\` or `\\"NEXT VALUE FOR my_sequence\\"` for JDBC.

Connector Map To

Specifies which name to map an object class (including the connector itself) or attribute to in connector-speak. For a dynamic connector, this attribute specifies the name of the native system item to map the attribute to. For example, a JDBC-based connector would probably map an object class to the name of a database table, and each property within it to the name of one of its columns.

Connector Map To Alias

Specifies which name to map an objectclass (including the connector itself) or attribute to in connector-speak. For example, where MD_CONN_MAP_TO is mapped to a complicated expression and therefore does not act as a useful reference name in the connector's code.

Connector Map To Ambiguous

Specifies the rare cases where a single LDAP attribute ambiguously maps to more than one connector objectclass or attribute. The order of the choices is important, as the first choice is the default when no explicit choice is made and a new object is created.

Connector Map To Ambiguous Choice Attr

Specifies that an attribute with ambiguous mappings can optionally name another LDAP attribute which is used to pass in an explicit choice when new instances of the objectclass are add()ed

Connector Map To Auxiliary

Identifies all auxiliary classes by name to which mappings are present.

Connector Map To Derived

Identifies all structural classes by name to which mappings are present with any classes that each of them derives from.

Connector Map To Lax

Specifies that MD_CONN_MAP_TO mappings are *lax*. The Boolean can appear on any objectclass which has MD_CONN_MAP_TO specified.

Connector Map to Multiple

Specifies multiple connector-speak classes or attributes. Used when you need to split a single LDAP class or attribute into multiple connector-speak attributes, or compose it from the values of multiple connector-speak attributes.

Connector Map To Same

Specifies that all properties defined for this attribute will use their LDAP names literally as their connector-speak names. This attribute appears on an object class which does not have MD_CONN_MAP_TO specified. Object classes without either MD_CONN_MAP_TO or this attribute are skipped.

Connector Map To Strict

Causes the framework to augment objectclass filters to include an explicit check for the existence of a particular connector-speak naming attribute. This is used in cases where the naming attribute is potentially ambiguous, but you have chosen to map only one choice.

Connector XML

Contains dynamic version of connector.xml configuration used for all connectors on this namespace.

Connector Map to Derived

Identifies all structural classes by name to which mappings are present with any classes that each of them derives from.

Default Value

(Optional) Specifies the default value for the attribute.

Note: Only clients use this value (for example, user interfaces). If the client does not supply a value, the Provisioning Server does not use it by default.

Implementation Bundle

Defines the name of connector implementation targeted by the connector type.

Is Compound Value

If selected, specifies that that the target class exists to define the format of values accepted by a compound or structured attribute.

Is Connection

Distinguishes connection-related attributes on the connector.

Is Connector Generated

Specifies that the value for property is generated implicitly by the endpoint (For example, true for IDENTITY column in JDBC).

Is Interesting to Compliance

Specifies that the attribute is marked as interesting to CA Role and Compliance Manager. For example, an attribute of an account object marked as interesting to compliance is available to CA Role and Compliance Manager as a resource for analysis. Typically these attributes signify the assignment of a permission or entitlement on the endpoint system.

Is Hidden

Specifies that the value for the property is not displayed in GUIs.

Is Naming

Specifies whether the attribute is the LDAP naming attribute.

Is Operational Attribute

Specifies whether the target property is operational (that is, calculated by the native endpoint rather than persisted).

Is Read Only Native

Specifies whether the property is read-only on the endpoint system.

isTransactionsEnabled

(DB2 IBM i only) Controls whether transactions are used when performing operations (for example, Add, Delete, Modify) on a JDBC endpoint. Applicable where transactions cannot be used for DB2 for IBM i database tables that are not journaled.

Is Well Known

Specifies whether this property is recognized as a member of the common set.

Metadata Item Name

(Read only) Defines the value for the name of the object within the metadata XML. For classes and attributes, this is usually the LDAP provisioning name.

Virtual

Flags the target property as *computed* rather than *persisted*.

Indirect Association Dialog (JDBC only)

You can use the Indirect Association dialog to specify a two-way association between any two classes of objects. The association between the two objects is bi-directional and contained in a third entity, that is a table, which holds the association links between the objects.

Each entry indicates an association between instances of each object. The node representing the association appears under the Associations node in the mapping tree.

Due to the symmetrical nature of containing the association in a third entity, lookups in either direction are equally fast and reverse associations are automatically assumed and created.

This dialog contains the following fields:

Schema

Specifies the schema (for example, tablespace or database) name for which the tables are displayed in the Membership Table field.

Membership Table

Specifies the tables that define the members of each group.

Note: The database table that you select requires at least two columns and cannot have more than two required columns.

Source Class Attribute

Specifies the attribute of the source class whose value is held in the membership table.

Membership Table Columns

Specifies the membership table columns that refer to the source and target class attributes.

Target Class Attribute

Specifies the attribute of the target class whose value is held in the membership table.

Source Class Attribute

Specifies the name of the virtual attributes on the source class that contain the list of names of associated objects.

Target Class Attribute

Specifies the name of the virtual attributes on the target object that contain the list of names of associated objects.

Objects Must Exist

Specifies whether the associated entries must exist.

Default: Selected.

Use DNs in Attributes

Specifies whether the virtual membership attributes contain a list of DNs, or just a list of the target object's naming attributes.

Default: Unselected.

More information:

[Indirect Associations](#) (see page 48)

Mapped Classes Dialog

The Mapped Classes dialog displays a read-only list of any classes that you have mapped and the native classes you have mapped them to.

This dialog contains the following fields:

Name

Displays classes that you have mapped.

Maps to

Displays the native classes you have mapped your classes to.

Add

Lets you add a new class node to the Mapping Tree.

Remove

Removes a mapped Class from the Mapping Tree.

Map Attributes Dialog

For JNDI, the Map Attributes dialog lets you specify the native object class attributes (JNDI) that you want to map a provisioning attribute to.

For JDBC, the Map Attributes dialog lets you specify the table column names that you want to map a provisioning attribute to.

You can map any attributes of the selected structural and auxiliary classes defined in the class mapping.

Any provisioning attribute that is mapped to multiple endpoint attributes will have a choice attribute generated for it. For ease of use, these should be placed on your user console account screens near the attribute in question.

For the Account class, the attribute mapping table is pre-populated with the recommended common account attribute set for ease of use. You do not have to map all of these attributes.

This dialog contains the following fields:

Name

Displays the provisioning display name of the attribute.

The naming attribute of the class in question is displayed in bold.

Data Type

Specifies the data type of the provisioning attribute that you have mapped to the native attribute.

Default: String. You can change the default if necessary.

Important! The data model type is important because it drives data validation and conversion in clients and the CA IAM CS. The following types match syntax that is defined as part of the XML schema (XSD) specification. You can find information about the XML schema definition at the following website:

<http://www.w3.org>

Binary Data

Defines an attribute whose value is arbitrary binary data.

Boolean

Specifies logically true or false in XML, but represented by the Provisioning Server and JIAM APIs as 1 or 0 in LDAP attribute values.

Date

Specifies a date.

Example: 1999-05-31

Note: The Dynamic Namespace plug-in to Provisioning Manager supports the years from 1800 through 9999. Other components of the solution impose no such restrictions and can represent virtually any year in recorded history.

Date & Time

Specifies a particular time on a particular day.

Example: 1999-05-31T13:20:00

Note: The Dynamic Namespace plug-in to Provisioning Manager supports the years from 1970 through 2036, so you must use Date to represent days falling outside of this range.

Note: Vendor differences complicate how Connector Xpress handles time-related columns. For example, MSSQL "DATETIME" signifies a DateTime value whereas other vendors use the standard "TIMESTAMP", and MSSQL TIMESTAMPS are automatically generated binary values. Also, Oracle does not support a "TIME" type and its "DATE" type is also effectively a TIMESTAMP. Therefore, to remain vendor-neutral, Connector Xpress allows you to map to any of Date/DateTime/Time whenever it makes sense for you to do so.

Double-precision floating-point

Specifies a double-precision 64-bit floating-point value.

Enumeration - enumeration type name

Specifies an attribute with a fixed list of enumerated values.

Flexi-DN

Specifies a distinguished name string format.

For example, "cn=Bob,ou=Sales,o=ExampleCorp". The connector enforces this.

Flexi-Email

Specifies an email address string format.

Flexi-Quoteless

Specifies that quotes are removed from attribute values.

Floating Point

Specifies a single-precision 32-bit floating-point number.

Integer

Specifies a 32-bit value between -2147483648 and 2147483647.

Long Integer

Specifies a 64-bit value from 9223372036854775808 through 9223372036854775807.

String

Specifies an unrestricted field.

Time

Specifies an offset of between 0 seconds and 23:59:59.

Example: 13:20:00

Multi

If selected, specifies that this attribute is multi-valued.

Note: If the native attribute is multi-valued, Connector Xpress automatically selects this check box. If the native attribute is single-valued, this option is cleared and read-only.

Maps to

Displays the native attribute names that the provisioning attribute is mapped to.

Extended Properties

Displays an extended set of metadata properties. These fields are displayed when you select the [Show extended set of metadata properties](#) (see page 97) on the [Connector Xpress Preferences dialog](#). (see page 160)

Note: For more information, see Extended Metadata Properties.

Map Class Dialog (JNDI)

The Map Class dialog lets you specify the native object classes (JNDI) that you want to map a class too. You associate zero or more auxiliary LDAP classes with the class mapping.

For JNDI-based endpoint types, you can map the account class to multiple endpoint object classes. When the user creates an account for this endpoint type through the Identity Management User Console, they select which of the object classes they would like to use for the account from a list. This list is made possible by a choice attribute that is generated automatically by Connector Xpress whenever the account class is mapped to multiple structural classes. This attribute should be added to your user console account screens like any other attribute.

This dialog contains the following fields:

Name

Defines the name of the class you are mapping.

Limits: Must begin with a letter.

Description

Describes the class you are mapping.

Managed

If unchecked, marks this class as mapped only for the purpose of establishing associations. As a result, Connector Xpress only maps its name and type. Instances of an unmanaged class can be listed and associated with other objects, but cannot be created, edited or deleted.

For compound classes, Connector Xpress selects this field by default, and cannot be cleared.

Search Container

Defines a particular location in the DIT where all objects of this class can be found. This can help the performance of certain search operations performed by the Connector Server.

Add structural class

Specifies all native LDAP object classes and displays the attributes in the attributes table.

You must associate every class mapping that you create with at least one structural class.

Add auxiliary class

Specifies any existing auxiliary classes of the structural class you selected and displays the attributes from other auxiliary LDAP classes in the attributes table.

Class Name

Displays the selected object classes for this provisioning class mapping.

Type

Displays whether the native object class is structural or auxiliary.

Derived From

Displays the inheritance hierarchy of this native object class.

Remove

Removes the selected object class.

Extended Properties

Displays an extended set of metadata properties. These fields are displayed when you select the [Show extended set of metadata properties](#) (see page 97) on the [Connector Xpress Preferences dialog](#). (see page 160)

Note: For more information, see Extended Metadata Properties.

Map Class Dialog (JDBC)

The Map Class dialog (JDBC) lets you specify the database tables that you want map this class to. Every class mapping that you create must be associated with exactly one database table.

This dialog contains the following fields:

Name

Defines the name of the class you are mapping.

Limits: Must begin with a letter.

Description

Describes the class you are mapping.

Managed

If unchecked, marks this class as mapped only for the purpose of establishing associations. As a result, Connector Xpress only maps its name and type. Instances of an unmanaged class can be listed and associated with other objects, but cannot be created, edited or deleted.

For compound classes, Connector Xpress selects this field by default, and cannot be cleared.

Schema (Mandatory)

Specifies the schema (for example, tablespace or database) name for the tables displayed in the Table list.

Table (Mandatory)

Specifies the table that represents account/group information in the selected schema.

You must associate every class mapping that you create with exactly one database table.

Extended Properties

Displays an extended set of metadata properties. These fields are displayed when you select the [Show extended set of metadata properties](#) (see page 97) on the [Connector Xpress Preferences dialog](#). (see page 160)

Note: For more information, see Extended Metadata Properties.

Map Compound Class and Attributes Dialog (JDBC)

The Map Compound Class and Attributes dialog (JDBC) lets you create a Compound type class that you can use to you provide multi-table support for JDBC connectors.

Every class mapping that you create must be associated with exactly one database table.

This dialog contains the following fields:

Name

Defines the name of the class you are mapping.

Limits: Must begin with a letter.

Description

Describes the class you are mapping.

Managed

If unchecked, marks this class as mapped only for the purpose of establishing associations. As a result, Connector Xpress only maps its name and type. Instances of an unmanaged class can be listed and associated with other objects, but cannot be created, edited or deleted.

For compound classes, Connector Xpress selects this field by default, and cannot be cleared.

Schema (Mandatory)

Specifies the schema (for example, tablespace or database) name for the tables displayed in the Table list.

Table (Mandatory)

Specifies the table that represents account/group information in the selected schema.

You must associate every class mapping that you create with exactly one database table.

Map Columns

Displays an overview of the column mappings you have selected.

Note: This table does not show the full set of mapping options. For more rarely used options, expand the class node to display individual attribute detail nodes.

Native Name

Displays the name of the native attribute.

Bold entries indicate mandatory entries that you must map at least once per class.

The naming attribute of the class in question is displayed in bold.

Native Type

Specifies the data-model type depending on the SQL type for the JDBC case.

Native Size

Displays the size of the Account/Group Table column in characters.

Note: In some cases this value is a “best guess”, such as for NVARCHARS or storage of time-related values in vendor-specific formats.

Name

Lists the provisioning attributes you can map to the native attribute.

Italic entries

Indicate that the attribute has already been mapped. For JNDI, these attributes can be mapped again.

Bold entries

Indicate mandatory entries that you must map at least once per class.

Custom attributes

Indicate that the attribute is given a default name based on its native attribute name. You can modify this attribute in the Provisioning Attribute Details dialog.

Blank entry

Lets you remove a mapping.

Note: For account classes, this list also displays the list of well-known attributes.

Type

Specifies the data-model type depending on the SQL type for the JDBC case.

Binary Data

Defines an attribute whose value is arbitrary binary data.

Boolean

Specifies logically true or false in XML, but represented by the Provisioning Server and JIAM APIs as 1 or 0 in LDAP attribute values.

Date

Specifies a date.

Example: 1999-05-31

Note: The Dynamic Namespace plug-in to Provisioning Manager supports the years from 1800 through 9999. Other components of the solution impose no such restrictions and can represent virtually any year in recorded history.

Date & Time

Specifies a particular time on a particular day.

Example: 1999-05-31T13:20:00

Note: The Dynamic Namespace plug-in to Provisioning Manager supports the years from 1970 through 2036, so you must use Date to represent days falling outside of this range.

Note: Vendor differences complicate how Connector Xpress handles time-related columns. For example, MSSQL "DATETIME" signifies a DateTime value whereas other vendors use the standard "TIMESTAMP", and MSSQL TIMESTAMPS are automatically generated binary values. Also, Oracle does not support a "TIME" type and its "DATE" type is also effectively a TIMESTAMP. Therefore, to remain vendor-neutral, Connector Xpress allows you to map to any of Date/DateTime/Time whenever it makes sense for you to do so.

Double-precision floating-point

Specifies a double-precision 64-bit floating-point value.

Enumeration - enumeration type name

Specifies an attribute with a fixed list of enumerated values.

Flexi-DN

Specifies a distinguished name string format.

For example, "cn=Bob,ou=Sales,o=ExampleCorp". The connector enforces this.

Flexi-Email

Specifies an email address string format.

Flexi-Quoteless

Specifies that quotes are removed from attribute values.

Floating Point

Specifies a single-precision 32-bit floating-point number.

Integer

Specifies a 32-bit value between -2147483648 and 2147483647.

Long Integer

Specifies a 64-bit value from 9223372036854775808 through 9223372036854775807.

String

Specifies an unrestricted field.

Time

Specifies an offset of between 0 seconds and 23:59:59.

Example: 13:20:00

Multi-valued

If selected, specifies that this attribute is multi-valued.

Note: If the native attribute is multi-valued, Connector Xpress automatically selects this check box. If the native attribute is single-valued, this option is cleared and read-only.

Extended Properties

Displays an extended set of metadata properties. These fields are displayed when you select the [Show extended set of metadata properties](#) (see page 97) on the [Connector Xpress Preferences dialog](#). (see page 160)

Note: For more information, see Extended Metadata Properties.

Mapped Containers Dialog

This dialog lets you specify the object classes which you want to use as containers in your connector.

This dialog contains the following fields that are not self-explanatory.

Name

Specifies the name of the container.

Contains

Displays the list of all defined containers.

Add

Adds a new container class to the mapping tree.

Remove

Removes the container class definition.

Map Container Class Dialog (JNDI)

The Map Class and Attributes Containers dialog lets you specify the objectclasses that can act as containers for accounts and groups, and their naming attributes.

By default Connector Xpress populates the Object Class list with the following entries which are the containers for inetOrgPerson and groupOfNames in the inetOrg schema, which are common account and group choices:

- Organization – o
- Organizational Unit – ou

Note: The attributes displayed for inetOrgPerson account objects do not have a direct relation to the corresponding container. Although ideally they would match, however there is no guarantee that match do for any given account object.

This dialog contains the following fields:

Name

Defines the name of the class you are mapping.

Limits: Must begin with a letter.

Description

Describes the class you are mapping.

Managed

If unchecked, marks this class as mapped only for the purpose of establishing associations. As a result, Connector Xpress only maps its name and type. Instances of an unmanaged class can be listed and associated with other objects, but cannot be created, edited or deleted.

For compound classes, Connector Xpress selects this field by default, and cannot be cleared.

Contained Classes

Specifies the classes that can be children of this container. For example, you can specify that the container Employee Groups can only allow Staff Group and Executive Group classes and not an individual Account Class.

Add structural class

Specifies all native LDAP object classes and displays the attributes in the attributes table.

You must associate every class mapping that you create with at least one structural class.

Add auxiliary class

Specifies any existing auxiliary classes of the structural class you selected and displays the attributes from other auxiliary LDAP classes in the attributes table.

Class Name

Displays the selected object classes for this provisioning class mapping.

Type

Displays whether the native object class is structural or auxiliary.

Derived From

Displays the inheritance hierarchy of this native object class.

Remove

Removes the selected object class.

Map Object Class Attributes

Displays an overview of the attribute mappings you have selected.

Note: This table does not show the full set of mapping options. For rarely used options, expand the class node to display individual attribute detail nodes.

Native Name

Displays the name of the native attribute.

Bold entries indicate mandatory entries that you must map at least once per class.

The naming attribute of the class in question is displayed in bold.

Native Type

Default: String for JNDI. You can change the default if necessary.

Name

Lists the provisioning attributes you can map to the native attribute.

Italic entries

Indicate that the attribute has already been mapped. For JNDI, these attributes can be mapped again.

Bold entries

Indicate mandatory entries that you must map at least once per class.

Custom attributes

Indicate that the attribute is given a default name based on its native attribute name. You can modify this attribute in the Provisioning Attribute Details dialog.

Blank entry

Lets you remove a mapping.

Note: For account classes, this list also displays the list of well-known attributes.

Type

Default: String for JNDI. You can change the default if necessary.

Important! The data model type is important because it drives data validation and conversion in clients and the CA IAM CS. The following types match syntaxes defined as part of the XML schema (XSD) specification. You can find information about the XML schema definition at the following website:

<http://www.w3.org>

Binary Data

Defines an attribute whose value is arbitrary binary data.

Boolean

Specifies logically true or false in XML, but represented by the Provisioning Server and JIAM APIs as 1 or 0 in LDAP attribute values.

Date

Specifies a date.

Example: 1999-05-31

Note: The Dynamic Namespace plug-in to Provisioning Manager supports the years from 1800 through 9999. Other components of the solution impose no such restrictions and can represent virtually any year in recorded history.

Date & Time

Specifies a particular time on a particular day.

Example: 1999-05-31T13:20:00

Note: The Dynamic Namespace plug-in to Provisioning Manager supports the years from 1970 through 2036, so you must use Date to represent days falling outside of this range.

Note: Vendor differences complicate how Connector Xpress handles time-related columns. For example, MSSQL "DATETIME" signifies a DateTime value whereas other vendors use the standard "TIMESTAMP", and MSSQL TIMESTAMPS are automatically generated binary values. Also, Oracle does not support a "TIME" type and its "DATE" type is also effectively a TIMESTAMP. Therefore, to remain vendor-neutral, Connector Xpress allows you to map to any of Date/DateTime/Time whenever it makes sense for you to do so.

Double-precision floating-point

Specifies a double-precision 64-bit floating-point value.

Enumeration - enumeration type name

Specifies an attribute with a fixed list of enumerated values.

Flexi-DN

Specifies a distinguished name string format.

For example, "cn=Bob,ou=Sales,o=ExampleCorp". The connector enforces this.

Flexi-Email

Specifies an email address string format.

Flexi-Quoteless

Specifies that quotes are removed from attribute values.

Floating Point

Specifies a single-precision 32-bit floating-point number.

Integer

Specifies a 32-bit value between -2147483648 and 2147483647.

Long Integer

Specifies a 64-bit value from 9223372036854775808 through 9223372036854775807.

String

Specifies an unrestricted field.

Time

Specifies an offset of between 0 seconds and 23:59:59.

Example: 13:20:00

Multi-valued

If selected, specifies that this attribute is multi-valued.

Note: If the native attribute is multi-valued, Connector Xpress automatically selects this check box. If the native attribute is single-valued, this option is cleared and read-only.

Extended Properties

Displays an extended set of metadata properties. These fields are displayed when you select the [Show extended set of metadata properties](#) (see page 97) on the [Connector Xpress Preferences dialog](#). (see page 160)

Note: For more information, see Extended Metadata Properties.

Merge XML Dialog

The Merge XML dialog lets you import an XML file that contains metadata into your project. Each project automatically contains metadata but you may want to import an external metadata file if, for example, you have one from another project that you want to reuse. When you import an XML metadata file, the system merges the new file with the existing one already in the project, but you must specify how the system handles any conflicts. This dialog lets you specify how the system deals with the conflict.

This dialog contains the following fields:

Retain existing project values

Maintain the existing metadata values in the project.

Overwrite existing project values with those in the XML file being selected

Replace the existing metadata in the project with the imported metadata.

More information:

[Merge a Modified Data Model](#) (see page 86)

Operations Bindings Editor

The Operations Bindings dialog displays a summary of existing operation bindings.

This dialog contains the following fields:

Available object classes

Displays the object classes you can create opbindings for.

Filtered object classes

Lets you filter the operation bindings displayed in the Opbindings summary list. Operation bindings for the classes displayed in this list are displayed in the Opbindings summary list.

The selections you make in this list are also displayed in all Filtered object classes lists in all Opbinding Operation editors. Also any changes to you make to this list in other Operation binding editors are also displayed in this list.

Opbindings summary

Displays a summary of existing operation bindings.

Create

Displays the Create Operation Binding dialog which lets you specify operation binding information.

Delete

Deletes the operation binding from the Opbindings summary list.

More information:

[Operation Bindings](#) (see page 59)

[Stored Procedures](#) (see page 59)

[Bind Operations to Stored Procedures](#) (see page 61)

[Stored Procedure and Column Considerations](#) (see page 66)

Operation Bindings – Stored Procedure Editor

This dialog lets you specify the parameters for a stored procedure style operation binding.

This dialog contains the following fields:

Available object classes

Displays the available mapped object classes in the following formats:

- **Object class format**

Format: DisplayName [connectorMapToObjectClassName]

Example: User Account [inetOrgPerson]

- **Ambiguous object classes format** – Displayed as a single item in the following format:

Format: DisplayName [connectorMapToObjectClassName1 | connectorMapToObjectClassName2 | ...]

Example: Default Container [organizationalUnit | organization]

Note: If you choose any ambiguous object class for the concurrent Opbinding, the LDAP object class name is always used in the Opbinding xml content. As a result, Connector Xpress clears the Use Native Name check box and makes it unavailable.

Added object classes

Lets you specify the object classes you want to add to this script operation binding.

Execute this procedure

Specifies when you want the connector to execute the stored procedure.

Description

Describes the operation binding.

Abort operation if procedure fails

Specifies how errors are handled. For example, if the timing is set to Before or After, and this check box is selected, exceptions are thrown and the operation aborts if any errors occur. If this check box is cleared the connector logs the error but the operation continues if an error occurs.

If the timing is set to Instead Of, and an error occurs, the connector always throws exceptions and aborts the operation when executing the operation binding.

When the timing is set to Instead Of this field is set to true by default, and cleared by default when the timing is set to After.

Use native name

Specifies that the connector uses connector-map-to attribute names for the binding rather than DYN LDAP attribute names.

Lookup Level

Specifies whether the attributes or the deleted object are cached for the opbinding to function and controls the lookup of all an object's values. Caching is typically done preemptively for Post delete operations.

The default for scripts is Full. For methods, the framework verifies all the parameters mapped for the Post delete stored procedure and selects Full or Exists depending whether non-contextual attributes are present or not, respectively.

Note: The LookUpLevel attribute is important to the handling of Post delete stored procedure operation bindings, as attribute values may need to be cached before the target object is deleted.

Full

Specifies that all attribute values are cached. This is the default for scripts.

Exists

Specifies that CA IAM CS checks that the object being deleted exists. If the object does not exist, CA IAM CS throws an LdapNameNotFoundException.

None

Specifies that the method or scripting payload is responsible for determining whether the target object exists. If you select Full or Exits, the framework determines whether the target object exists automatically. This means that CA IAM CS passes the call on, and that the script or stored procedure you call should determine if the object exists.

Procedure

Specifies the stored procedure you want to run before, instead of, or after a selected operation.

In / Out

Indicates the type of parameter.

In

Specifies that the parameter or type passes the value into the stored procedure.

InOut

Specifies the stored procedure passes the value both in and out.

Out

Specifies that the stored procedure passes out the value.

Parameter

Specifies that the name of the parameter as specified in the store procedure's definition.

Data Type

Displays the SQL type for the named parameter.

Attribute

Specifies the attribute that maps to the parameter for the stored procedure.

Note: The values in this list with asterisks on either side are runtime context values for the specified operation. For example, the Distinguished Name for the account targeted by an operation or operation-specific value such as the "new name" in a MODIFY RN rename operation. The remaining values are the attribute values you previously mapped for the specified class.

Name

Defines the target object's most nested RDN value.

DN

Defines the target object's full distinguished name.

ErrorStatus

Specifies that the connector uses the attribute to pass a descriptive error string back from a stored procedure. This can cause failure if *strict completion* is true for the binding.

AddModify_AttrsAsXML

Specifies that the entire Add or Modify operation is passed in as a single XML string.

Note: This can be useful for stored procedures bound to ADD or MODIFY operations where the endpoint has good in-built XML support. The entire request can be passed in a single XML string that can then be broken down within the stored procedure, if desired.

ModifyRn_NewRdn

Defines the new RDN.

Move_NewParentName

Defines the new parent name.

MoveRename_NewParentName

Defines the new parent name.

MoveRename_NewRdn

Defines the new RDN.

CLASS

Defines the name of the object type.

OPERATION

Defines the name of the operation, for example, Add, Delete.

ALIAS

Defines the alias for the script.

Note: If you select more than one object class, only the union set of attributes for those object classes and the runtime attributes (such as *NAME*, *DN*) is available in this field.

Multivalued

Specifies that the parameter can have multiple values and needs a flattening style.

Flattening Style

Specifies a flattening method used to represent multiple values in a single string literal. If the attribute is multivalued, use the Flattening Style column.

Flattening Mode

Displays the flattening mode for multivalued parameters where changes can be expressed in terms of values ADDED or REMOVED, or alternatively, by passing in the complete new list of values (REPLACE).

Operation Bindings – Operations Editor

This dialog displays a summary of the operation bindings for the currently selected operation. Operations are performed in the order displayed in the list. You can use this dialog to bind a script or stored procedure to an operation and change the order in which the operating bindings are executed.

This dialog contains the following fields that are not self-explanatory:

Available object classes

Displays the available mapped object classes.

Filtered object classes

Lets you filter the opbindings that are displayed in the Before, Instead of and After lists. Operation bindings for the classes displayed in this list are displayed in these lists.

The selections you make in this list are also displayed in all Filtered object classes lists in all Opbinding Operation editors. Also any changes to you make to this list in other Operation binding editors are also displayed in this list.

Before

Displays the operation binding that the connector performs before the specified operation. The connector executes the operation binding in the order displayed in the list.

Instead Of

Displays the operation binding that the connector performs instead of the specified operation. The connector executes the operation binding in the order displayed in the list.

After

Displays the operation binding that the connector performs after the specified operation. The connector executes the operation binding in the order displayed in the list.

Create

Displays the Create Operation Bindings dialog which lets you specify operation binding information.

Delete

Deletes the currently selected operation binding.

Move Up

Changes the order in which the selected operation binding is performed.

Move Down

Changes the order in which the selected operation binding is performed.

Preferences Dialog

You can use the Connector Xpress Preferences Dialog to change various aspects of the way Connector Xpress looks and behaves, such as its look and feel, search limits, and command parameters.

This dialog contains the following fields:

Search Size Limit

Specifies the maximum number of search results the Provisioning Servers tree attempts to retrieve for a particular node. Connector Xpress uses this value to prevent a large drain on system resources, for example, if many policies exist.

Show Extended Metadata

Displays an extended set metadata on several dialogs that contains all additional metadata that is relevant to this data model item.

Command to launch web browser

Specifies the command used to launch the web browser.

Default: (Windows) "rundll32" "url.dll,FileProtocolHandler"

Default: (Solaris)"/usr/sfw/bin/mozilla"

More Information:

[Set Preferences](#) (see page 26)

Provisioning Server Details Dialog

The Provisioning Server Details dialog lets you configure a connection to a Provisioning Server to which you can deploy a connector.

This dialog contains the following fields:

Host Name

Defines the name of the host where Provisioning Server runs.

User Domain

Defines the domain containing the user whose credentials the connector uses to log on to the Provisioning Server.

User Name

Defines the username that Connector Xpress uses to log on to the server.

Use TLS

Specifies that a secure TLS connection to the server is established. This means that the connector does not transmit the password in clear text. If not selected, the connector transmits the password in clear text.

Key

Defines the name of the configuration option that the connector uses to connect to the Provisioning Server.

Value

Defines the value of the configuration option.

Key column

Displays the full list of configuration options that the connector uses to connect to the Provisioning Server.

Value column

Displays the corresponding values for the configuration options displayed in the Key column.

More Information:

[Add and Configure a Provisioning Server](#) (see page 74)

[Edit Provisioning Server Details](#) (see page 74)

Provisioning Server Password Required Dialog

The Provisioning Server Password Required dialog lets you specify the password for the selected Provisioning Server.

This dialog contains the following field:

Password

Specifies the password required to access the selected Provisioning Server.

Script Editor Dialog

This dialog lets you specify the parameters for a script style operation binding.

This dialog contains the following fields:

Available object classes

Displays the available mapped object classes.

Added object classes

Lets you specify the object classes you want to add to this script operation binding.

Execute this script

Specifies the script you want the connector to execute before, after instead of, or after a selected operation.

Description

Describes your operation binding.

Abort operation if script fails

Specifies how errors are handled. For example, if the timing is set to Before or After, and this check box is selected, exceptions are thrown and the operation aborts if any errors occur. If this check box is cleared, the connector logs the error but the operation continues if an error occurs.

If the timing is set to Instead Of, and an error occurs, the connector always throws exceptions and aborts the operation when executing the operation binding.

Lookup Level

Specifies whether the attributes or the deleted object are cached for the opbinding to function and controls the lookup of all an object's values. Caching is typically done preemptively for Post delete operations.

The default for scripts is Full. For methods, the framework verifies all the parameters mapped for the Post delete stored procedure and selects Full or Exists depending whether non-contextual attributes are present or not, respectively.

Note: The LookUpLevel attribute is important to the handling of Post delete stored procedure operation bindings, as attribute values may need to be cached before the target object is deleted.

Full

Specifies that all attribute values are cached. This is the default for scripts.

Exists

Specifies that CA IAM CS checks that the object being deleted exists. If the object does not exist, CA IAM CS throws an LdapNameNotFoundException.

None

Specifies that the method or scripting payload is responsible for determining whether the target object exists. If you select Full or Exits, the framework determines whether the target object exists automatically. This means that CA IAM CS passes the call on, and that the script or stored procedure you call should determine if the object exists.

Execute Directly

Specifies that the connector performs the operation binding directly, rather than generating text that the ScriptStyleOpProcessor runs later.

Search Asynchronously

If selected specifies that the execution of the payload occurs asynchronously and a NamingEnumeration is used to return results in a streaming fashion for one-level and subtree searches.

Note: Connector Xpress displays this field when you select the Search operation from the Available Operations dialog in the Create Operation dialog.

Execute a function in a global script

Specifies that a function in a global script is executed as the script for this operation binding.

Global Script

Specifies the global script from which the function is selected.

New

Displays the Edit Script dialog which lets you create a new global script.

Function Name

Defines the function that is executed in the selected global script.

Execute an individual script

Specifies the individual script that is executed for this operation binding.

Edit Script

Displays the Edit Script dialog which lets you add or modify the individual script.

Script Name Dialog

This dialog lets you modify the parameters for a global script.

This dialog contains the following fields:

Script Language

Specifies the available scripting languages that CA IAM CS framework currently supports.

Execute Directly

Specifies that the connector performs the operation binding directly, rather than generating text that the ScriptStyleOpProcessor runs later.

More information:

[Operation Bindings](#) (see page 59)

[Bind Operations to Scripts](#) (see page 63)

[Scripts](#) (see page 60)

Scripts Dialog

This dialog lets you specify the parameters for a global script.

This dialog contains the following fields:

Add New Global Script

Creates a script and adds a new global script node under the Scripts node.

Delete Global Script

Deletes the selected global script and removes the script under the Scripts node.

Select Data Source for new project Dialog

The Select Data Source for new project dialog lets you select a previously configured data source for a new project, add or edit an existing data source, or remove a data source.

This dialog contains the following fields:

Name

Displays the name of a configured data source you can use to create a project.

Type

Displays the type of configured sources you can use to create a project.

Add

Displays the Source Types dialog where you can choose from available source types and then configure your new data source.

Edit

Displays the Edit Source dialog where you can edit the connection details for the specified data source.

Remove

Removes the data source from the list box.

More information:

[Create a Project](#) (see page 32)

[Set Up Data Sources](#) (see page 14)

Select Template Dialog

This dialog lets you select a template to use as a starting point for mapping common endpoint schemas. Starting a project with a template is useful for LDAP, where standards such as RFCs define widely used schemas, and where purely custom schemas are less common. Templates also include specialized JavaScript mark-up that Identity Management uses to render account management screens.

You can click each template to see a brief description.

Open in Wizard Mode

Starts a project using the wizard, and steps you through the basic process of mapping an account class, or an account class and group class, depending on the template you selected.

More information:

[Templates](#) (see page 30)

Source Types Dialog

The Source Types dialog lets you select an available source type for the data source.

This dialog contains the following fields:

None

Lets you create attributes and edit generic metadata that is not intended for deployment without specifying a data source.

Available Source Types

Displays the available source types you can use as the basis for your connector definition.

JDBC

Lets you map to database tables and stored procedures.

JNDI

Lets you map to object classes and attributes contained in a directory server.

More Information:

[Create a Project](#) (see page 32)

[Set Up Data Sources](#) (see page 14)

Wizard Summary Dialog

This dialog displays a summary of mappings you have made.

More information:

[Create a Project Using the Wizard](#) (see page 34)