

CA Chorus™

Release Notes

Version 04.0.00, Sixth Edition



This Documentation, which includes embedded help systems and electronically distributed materials (hereinafter referred to as the "Documentation"), is for your informational purposes only and is subject to change or withdrawal by CA at any time. This Documentation is proprietary information of CA and may not be copied, transferred, reproduced, disclosed, modified or duplicated, in whole or in part, without the prior written consent of CA.

If you are a licensed user of the software product(s) addressed in the Documentation, you may print or otherwise make available a reasonable number of copies of the Documentation for internal use by you and your employees in connection with that software, provided that all CA copyright notices and legends are affixed to each reproduced copy.

The right to print or otherwise make available copies of the Documentation is limited to the period during which the applicable license for such software remains in full force and effect. Should the license terminate for any reason, it is your responsibility to certify in writing to CA that all copies and partial copies of the Documentation have been returned to CA or destroyed.

TO THE EXTENT PERMITTED BY APPLICABLE LAW, CA PROVIDES THIS DOCUMENTATION "AS IS" WITHOUT WARRANTY OF ANY KIND, INCLUDING WITHOUT LIMITATION, ANY IMPLIED WARRANTIES OF MERCHANTABILITY, FITNESS FOR A PARTICULAR PURPOSE, OR NONINFRINGEMENT. IN NO EVENT WILL CA BE LIABLE TO YOU OR ANY THIRD PARTY FOR ANY LOSS OR DAMAGE, DIRECT OR INDIRECT, FROM THE USE OF THIS DOCUMENTATION, INCLUDING WITHOUT LIMITATION, LOST PROFITS, LOST INVESTMENT, BUSINESS INTERRUPTION, GOODWILL, OR LOST DATA, EVEN IF CA IS EXPRESSLY ADVISED IN ADVANCE OF THE POSSIBILITY OF SUCH LOSS OR DAMAGE.

The use of any software product referenced in the Documentation is governed by the applicable license agreement and such license agreement is not modified in any way by the terms of this notice.

The manufacturer of this Documentation is CA.

Provided with "Restricted Rights." Use, duplication or disclosure by the United States Government is subject to the restrictions set forth in FAR Sections 12.212, 52.227-14, and 52.227-19(c)(1) - (2) and DFARS Section 252.227-7014(b)(3), as applicable, or their successors.

Copyright © 2015 CA. All rights reserved. All trademarks, trade names, service marks, and logos referenced herein belong to their respective companies.

CA Technologies Product References

This document references the following CA Technologies products:

- CA ACF2
- CA Chorus™
- CA Chorus™ for IMS Database Management
- CA Chorus™ for Security and Compliance Management
- CA Chorus™ for Storage Management
- CA Chorus™ Infrastructure Management for Networks and Systems
- CA Chorus™ Software Manager
- CA Top Secret

Contact CA Technologies

Contact CA Support

For your convenience, CA Technologies provides one site where you can access the information that you need for your Home Office, Small Business, and Enterprise CA Technologies products. At <http://ca.com/support>, you can access the following resources:

- Online and telephone contact information for technical assistance and customer services
- Information about user communities and forums
- Product and documentation downloads
- CA Support policies and guidelines
- Other helpful resources appropriate for your product

Providing Feedback About Product Documentation

If you have comments or questions about CA Technologies product documentation, you can send a message to techpubs@ca.com.

To provide feedback about CA Technologies product documentation, complete our short customer survey which is available on the CA Support website at <http://ca.com/docs>.

Documentation Changes

The following documentation updates have been made since the fifth edition of this documentation:

- [Split Bookshelves for CA Chorus and Disciplines](#) (see page 24)—Added CA Chorus for DB2 Database Management to the list of supported bookshelves.
- [Third-Party Acknowledgements](#) (see page 25):
 - Updated the Spring Framework JAR release to 4.0.5.
 - Updated the Apache Batik JAR version to 1.8.

The following documentation updates have been made since the fourth edition of this documentation:

- [Installation and Configuration Enhancements](#) (see page 17)—This release supports IBM 64-bit SDK for z/OS, Java Technology Edition, Version 7 Release 0 Modification 0 Service Release 5 or 7, or IBM 64-bit SDK for z/OS, Java Technology Edition, Version 7 Release 1 (5655-W44). Support for Version 7 service release 1 is new.

The following documentation updates have been made since the third edition of this documentation:

- [Time Series Facility Enhancements](#) (see page 18)—Clarified the TSF Bridge usage.
- [Supported Upgrades](#) (see page 24)—Noted the new ETJ2540T security upgrade job.

The following documentation updates have been made since the second edition of this documentation:

- [Investigator Features](#) (see page 22)—Updated with the feature to Launch a Custom Link.
- [Software Development Kit Enhancements](#) (see page 19)—Added this topic to describe the enhancements to the SDK.
- [Supported Upgrades](#) (see page 24)—Noted the new ETJ3040x security upgrade job.
- [Third-Party Acknowledgements](#) (see page 25):
 - Changed the H2 license version to 1.3.168.
 - Updated the Spring Framework license version to 4.0.5.

The following documentation updates have been made since the first edition of this documentation:

- [Time Series Facility Enhancements](#) (see page 18)—Corrected the database purging process description.
- [Third-Party Acknowledgements](#) (see page 25):
 - Corrected the Spring Framework version from 2.5.6 to 2.5.5 in Software under the Apache 2.0 License.
 - Added the license for IBM DB2 Driver for JDBC and SQLJ 9.7.

The following documentation updates have been made since the last release of this documentation:

- [Incremental Release](#) (see page 9)—Added this section to describe the need for incremental release of new features.
- [Enhancements to Existing Features](#) (see page 11)—Added enhancements for this release.
- [New Features](#) (see page 21)—Added features for this release.
- [Third-Party Acknowledgements](#) (see page 25)—Updated this section with new TPSAs.

Contents

- Chapter 1: Incremental Release** **9**

- Chapter 2: Enhancements to Existing Features** **11**
 - Investigation Enhancements 11
 - Policy Enhancements 13
 - Knowledge Center Enhancements 16
 - Installation and Configuration Enhancements 17
 - Time Series Facility Enhancements 18
 - Software Development Kit Enhancements 19

- Chapter 3: New Features** **21**
 - Custom Investigation Features..... 21
 - Investigator Features 22
 - Supported Upgrades 24
 - Split Bookshelves for CA Chorus and Disciplines..... 24

- Appendix A: Third-Party Acknowledgments** **25**

Chapter 1: Incremental Release

The Incremental Release Program is a customer-interactive delivery model where new product features are developed and released using the Agile development methodology. The CA Technologies development teams work closely with customers to create product features for rapid implementation. We work with customers to release new features incrementally, as they are completed, rather than waiting for a list of features to be completed. After all of the features for an incremental release are completed, the release transitions to the [standard support policy](#).

To participate in the Incremental Release program, review the [Incremental Release Program – Support Policy and Terms](#). To discuss the customer requirements for participation, contact your CA Chorus Product Manager (Thomas.Repede@ca.com). Participating in the Agile development process is not mandatory.

Chapter 2: Enhancements to Existing Features

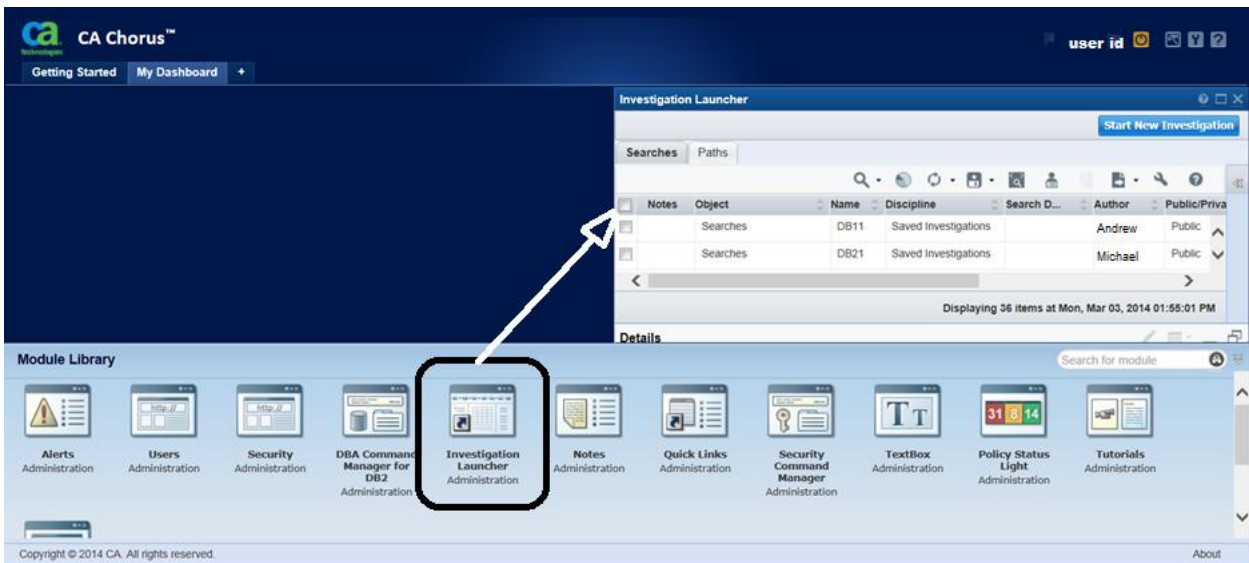
Investigation Enhancements

This section details enhancements to help you best view your data and investigate issues and relationships.

Note: For more information about investigation options, see the *Product Guide*.

Investigator Module Rebranded as Investigation Launcher

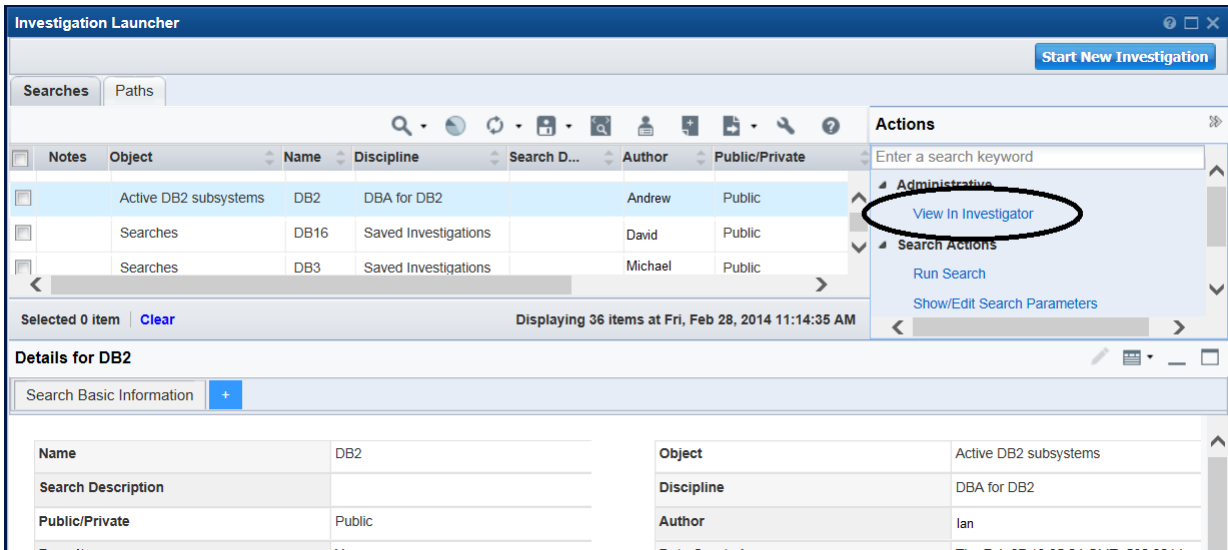
We renamed the Investigator Module to Investigation Launcher to align its name with its function.



Access to Searches and Paths in the Investigation Launcher

We have added Searches and Paths tabs to the Investigation Launcher. These tabs let you quickly leverage existing searches and paths to more efficiently access your data. The Investigation Launcher now provides access to all the actions in the Actions pane which you can access in the Investigator.

In addition, you can now directly open the Investigator to view details about a search or path selected in the Investigation Launcher.



Policy, Search, Path Deletion Restrictions

You are not allowed to delete policies, searches, and paths that are created by other users. CA Chorus restricts you from doing so by hiding the corresponding links to delete these features.

Disabled Topology View for Objects Without Children

We have removed the Add to Topology Viewer and the Replace Topology Viewer links from the Investigator actions for the objects without children. This enhancement saves you time when selecting objects without children.

Investigator Search Enhancement

Required filters exist for some of the objects for which you must enter the values and search.

While performing any search on any of the columns in the object, if you navigate to any other object, the search criteria remain the same if there are any common columns.

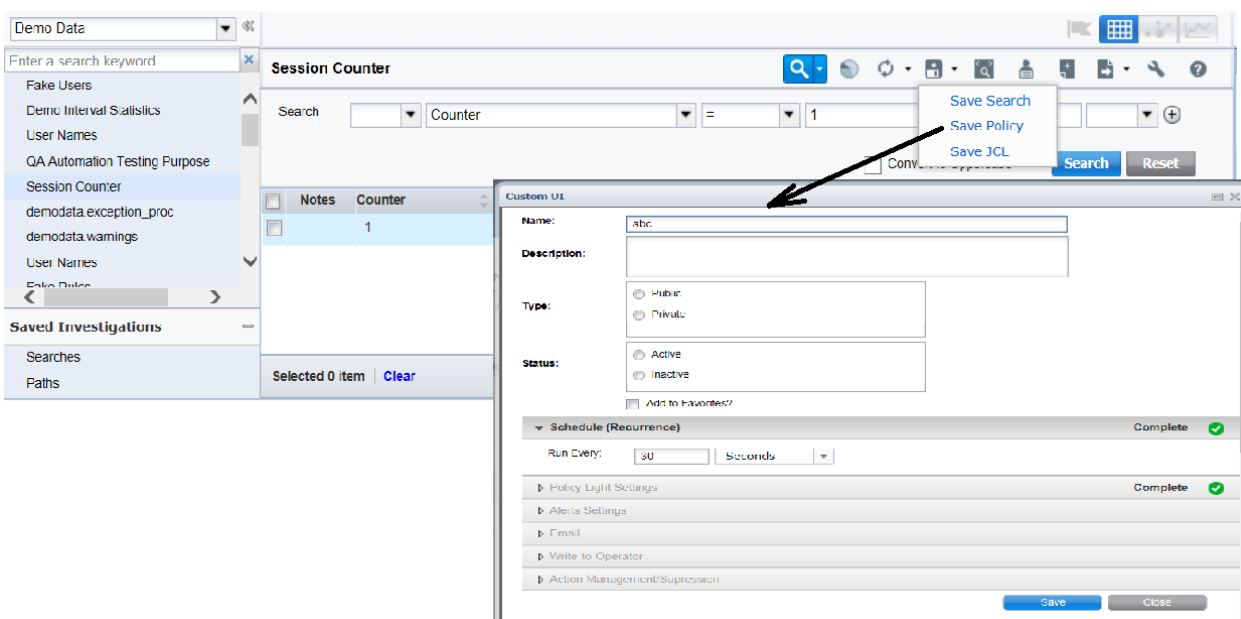
Policy Enhancements

This section details enhancements to help you best use the Policy Light module and policies. A policy is the rule to evaluate a data point in an object against a user-specified value. Policy defines the actions to be executed on the successful evaluation of the rule.

Note: For more information about saving and running policies, see the *Product Guide*.

Saving Policy Using the Investigator

We have simplified the process to save a policy. Now you can save a policy using the Investigator, instead of the Policy Status Light module, in a few simple steps trailing search filter criteria.

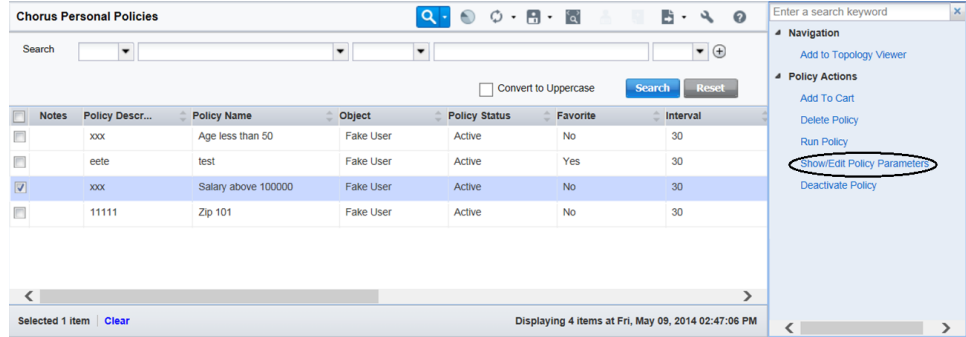


When migrating policies from Version 3.0 to Version 4.0, rule criteria for all the Version 3.0 policies are carried over to Version 4.0 format; whereas, object criteria of those policies where individual rows were selected are not carried over.

Edit Policy Parameters

We have added action links to edit policy parameters from the Investigator. An object row displays the corresponding policy parameters. You can edit the parameters by selecting the corresponding object row in the objects grid, and then selecting the appropriate link in the Actions pane and performing subsequent actions.

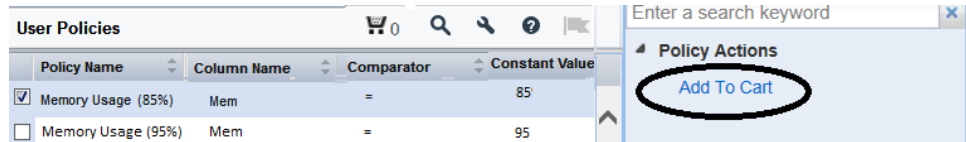
This enhancement simplifies your access to policies, thus increases your efficiency.



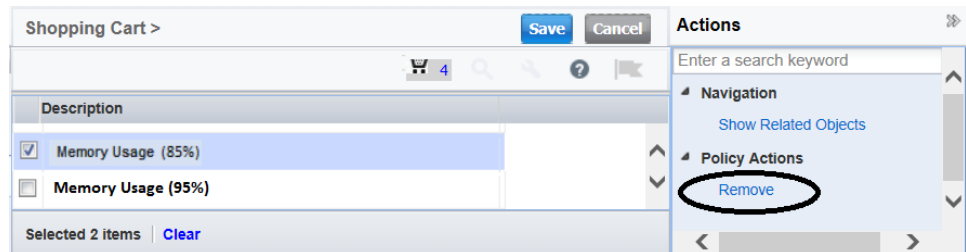
Policy Shopping Cart Enhancements

We have enhanced the Shopping Cart behavior to simplify interaction for adding and removing policies. These enhancements provide you better user experience and improved efficiency for managing policies.

Now when you open the object picker from the traffic light, the Add to Cart option appears for you to add an item.



A click on the shopping cart icon displays the consolidated view of all selected items across disciplines. You can now remove items by clicking Remove.

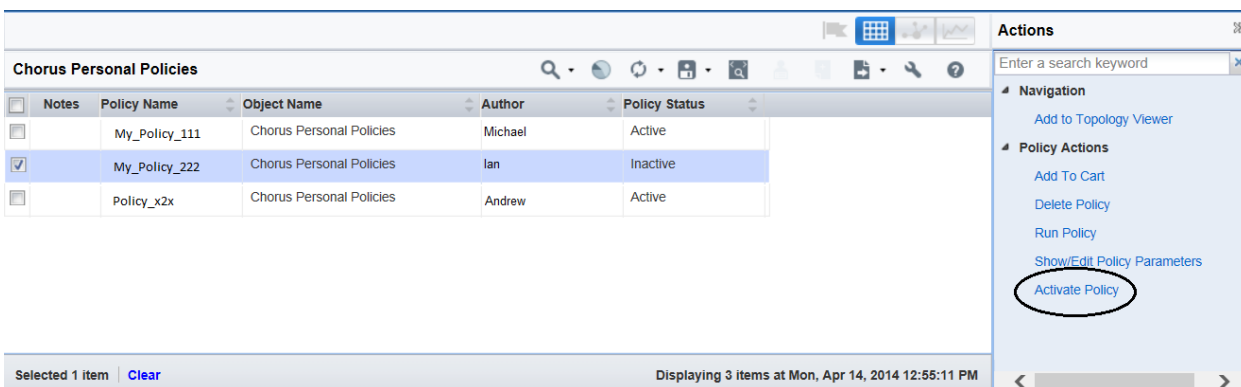


Policy Creation Enabled Without Preexisting Data

The Policy Status Light Module lets you create policies even when relevant data is not available. Therefore, it saves your time and effort when you need a new policy for all new content or data. Later you can add the relevant data in the policy.

Investigator Actions to Activate and Deactivate Policy

We have added action links to activate and deactivate policies from the Investigator. The Policy Status column displays the current status of a policy as active or inactive. You can change its status by selecting the object row in the objects grid and the appropriate link in the Actions pane.



The screenshot displays the 'Chorus Personal Policies' interface. It features a table with columns for Notes, Policy Name, Object Name, Author, and Policy Status. The table contains three rows: 'My_Policy_111' (Active), 'My_Policy_222' (Inactive), and 'Policy_x2x' (Active). The 'My_Policy_222' row is selected. To the right, the 'Actions' pane is open, showing a search bar and a list of actions. The 'Activate Policy' link is circled in red.

Notes	Policy Name	Object Name	Author	Policy Status
<input type="checkbox"/>	My_Policy_111	Chorus Personal Policies	Michael	Active
<input checked="" type="checkbox"/>	My_Policy_222	Chorus Personal Policies	Ian	Inactive
<input type="checkbox"/>	Policy_x2x	Chorus Personal Policies	Andrew	Active

Selected 1 item | Clear

Displaying 3 items at Mon, Apr 14, 2014 12:55:11 PM

Actions

Enter a search keyword

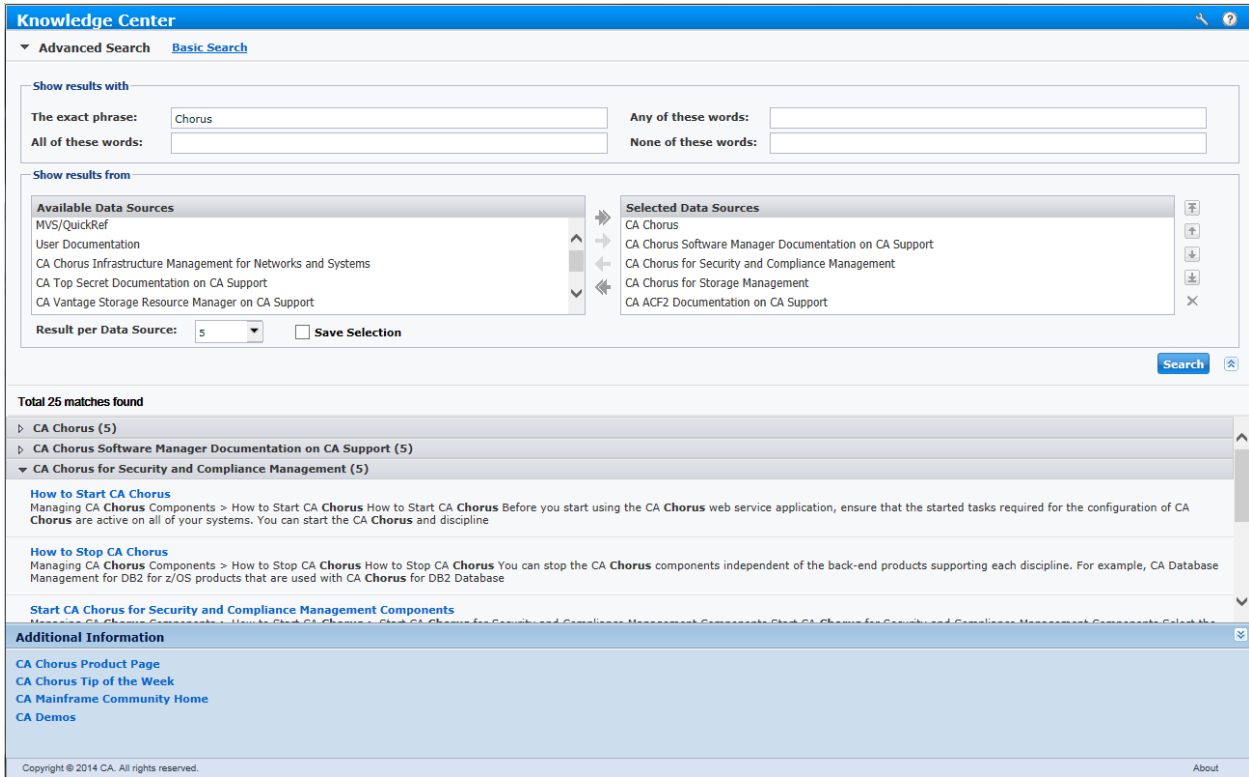
- Navigation
 - Add to Topology Viewer
- Policy Actions
 - Add To Cart
 - Delete Policy
 - Run Policy
 - Show/Edit Policy Parameters
 - Activate Policy

Knowledge Center Enhancements

CA Knowledge Center imparts product knowledge and guides you to execute specific tasks by answering your search. The Knowledge Center also provides links to the CA Chorus Product Page, CA Chorus Community, and CA Demo videos as Additional Information.

Advanced Search Enhancements

The Knowledge Center offers enhancements in Advanced Search to help you find the content you need as quickly as possible.



The Knowledge Center lets you:

- Order the appearance of selected data sources in your results list. For example, you can set the following data sources to appear in this order:
 1. CA Chorus
 2. CA Chorus Software Manager Documentation on CA Support
 3. CA Chorus for Security and Compliance Management
- Specify, from the available options, the maximum number of results that each data source should display.

- Collapse and expand the search pane and the search results per data source for focused view.
- Persist the changes that you make in the search criteria.

Backward Compatibility Support for Version 3.0 Disciplines

The Knowledge Center detects the discipline version that is installed in your system and displays the relevant search results. For example, if you have installed Version 3.0 of CA Chorus for Storage Management, the search results will point to the CA Chorus for Storage Management Version 3.0 bookshelf.

Installation and Configuration Enhancements

File Identification

To streamline identification of key files, you can use a different HLQ for the z/OS files that you create during configuration. For example, you may want different security and backup rules for these files. Doing so makes it easier to identify the data sets that are created per instance versus data sets that are deployed from the SMP/E installation. The applicable CA Software Manager (CSM) and auto config topics in the *Installation Guide* note where to use this feature.

Java Support

This release supports IBM 64-bit SDK for z/OS, Java Technology Edition, Version 7 Release 0 Modification 0 Service Release 5 or 7, or IBM 64-bit SDK for z/OS, Java Technology Edition, Version 7 Release 1 (5655-W44). Support for Version 7 service release 1 is new.

Time Series Facility Enhancements

We have simplified the Time Series Facility (TSF) architecture while maintaining the robust User Interface (UI). Version 4.0 introduces a TSF architecture that eliminates the CA Datacom/AD database, thus simplifying data management and configuration tasks. In this new TSF architecture, the database resides on a file system under the CA Chorus installation. You must route your TSF connections from the CA Chorus disciplines to a TSF Bridge. This bridge then sends your data to the TSF Server. Ultimately, all TSF data reaches the new TSF Server and is housed in its database (not in a CA Datacom/AD database). Therefore, the TSF documentation includes commands and procedures that are related to the TSF Bridge (CHORTSFB) and the new TSF Server (CHORNTSF).

Exceptions

Application developers can push data to the TSF Server using APIs (C or Assembler). If you are a Software Development Kit user, you decide the API to use. This new TSF architecture uses only the CHORNTSF started task. To use the new TSF architecture, configure your application to talk directly to the TSF Server (hostname and port), bypassing the TSF Bridge.

Time Series Facility Database Management Enhancements

We have enhanced the management of the Time Series Facility (TSF) database with the following features:

- An automated TSF database purging process. CA Chorus monitors the TSF database space and automatically purges the oldest 10 percent of the TSF data when the TSF database reaches approximately 90 percent capacity. Doing so helps prevent the TSF database from becoming full.
- An algorithm to calculate the recommended size of the TSF data store. This algorithm helps you determine how much space to allocate to the zFS that houses the TSF database.
- TSFZGROW JCL to increase space in the zFS that houses the TSF database. This JCL lets you add space to the TSF database if CA Chorus is purging TSF data more often than you would like. Adding more space enables continuous use of the database when the data area is full.

Software Development Kit Enhancements

We have enhanced the CA Chorus Software Development Kit (SDK) to improve its usability and to simplify your product integration.

Note: For more information, see the *Software Development Kit User Guide*.

Improved Usability

You can now install the required SDK dependencies using the new SDK wizard. This wizard saves you time and simplifies the process of installing the necessary plug-ins and dependencies.

The wizard is bundled in the CA Chorus SDK ISO image, `chorus_sdk_windows.iso`. The SDK ISO image is available at CA Support Online from the CA Chorus Download Center.

Simplified Product Integration using CFAR

We provide a new CA Chorus File Archive (CFAR) feature that simplifies how you integrate your product into the CA Chorus Platform. With CFAR, you can easily package and deploy your files.

Customizable Wizards

You can quickly and easily build and integrate dialog windows and wizards using the Wizard Builder Toolkit. Doing so helps you create functional user interfaces with a simple drag-and-drop, thus reducing coding time.

The Wizard Builder Toolkit offers two options to build your custom wizard:

- Single-page user interfaces. For example, an interface to reset passwords.
- Multi-page wizards. For example, a wizard to back up data sets that includes multiple parameters and options.

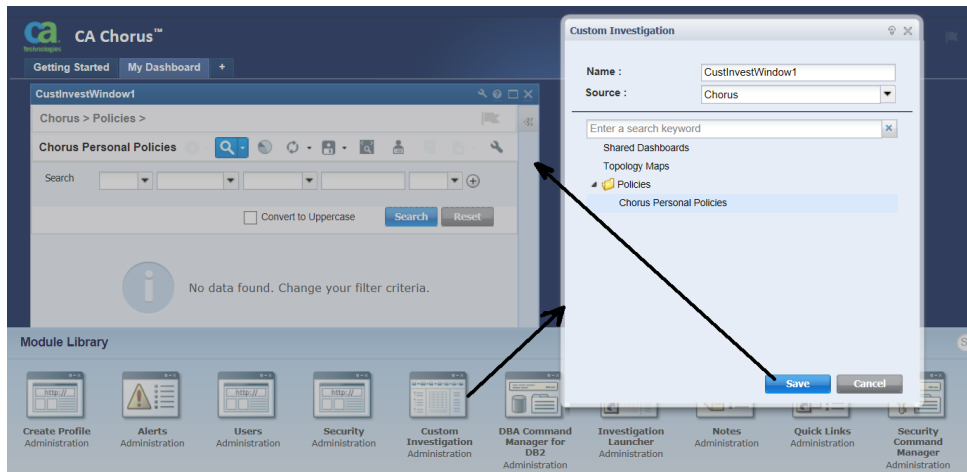
Chapter 3: New Features

Custom Investigation Features

New Custom Investigation Module

We have introduced the Custom Investigation module to enable viewing a subset of data directly in this module instead of reviewing complete data in the Investigator. Doing so lets you narrow the data you are doing to simplify your view, which can lead to efficiencies.

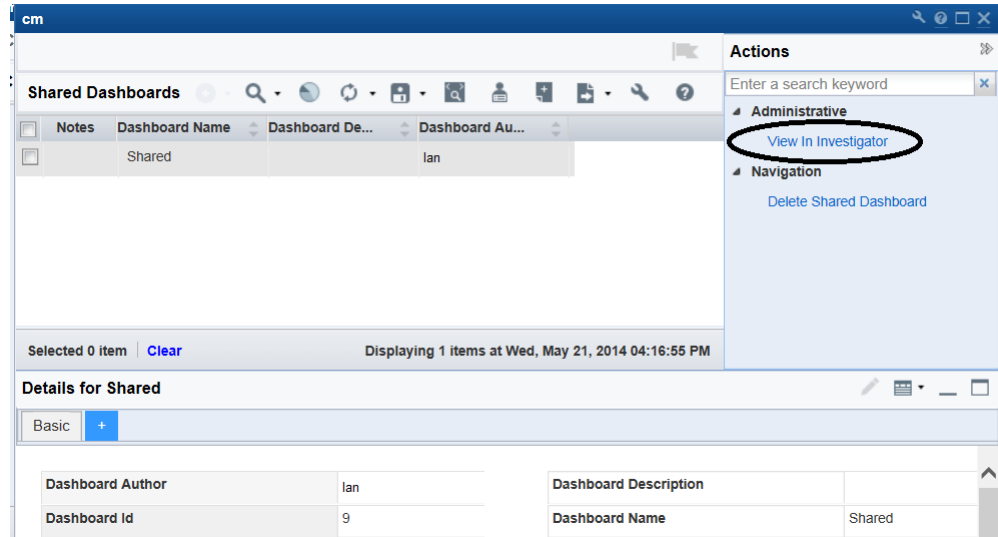
The module requires only one-time configuration, following which you can frequently monitor and perform actions on these subsets in the subsequent sessions.



Note: For more information about starting the Custom Investigation module, see the *Product Guide*.

Launch the Investigator from the Custom Investigation Module

We have enabled launching the Investigator from the Custom Investigation module. This feature enhances your ability to perform corresponding tasks based on the selected object.

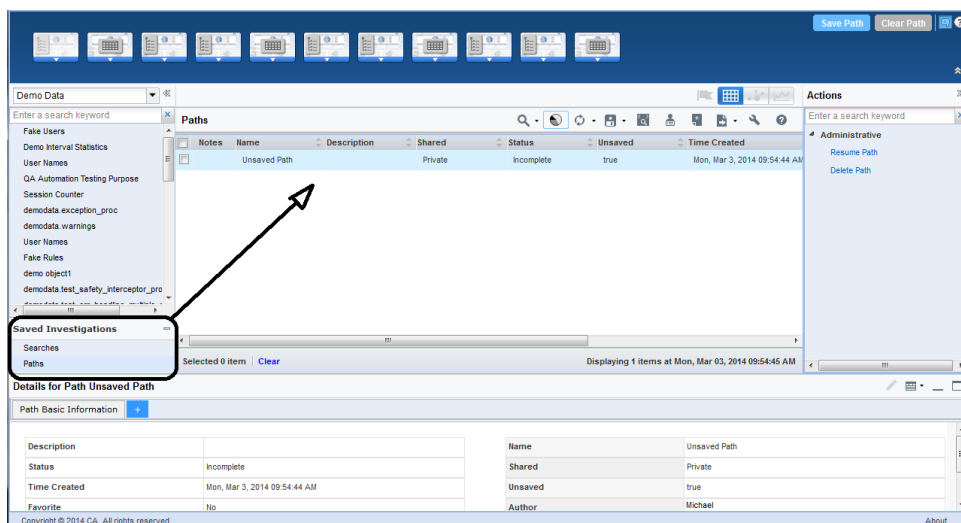


Note: For more information about launching the Investigator from the Custom Investigation module, see the *Product Guide*.

Investigator Features

Easy Access to Saved Investigations

We have added the Saved Investigations pane in the Investigator for easy access to saved searches and paths. The Searches and Paths links let you view the previously saved searches and investigation paths in the Data pane.

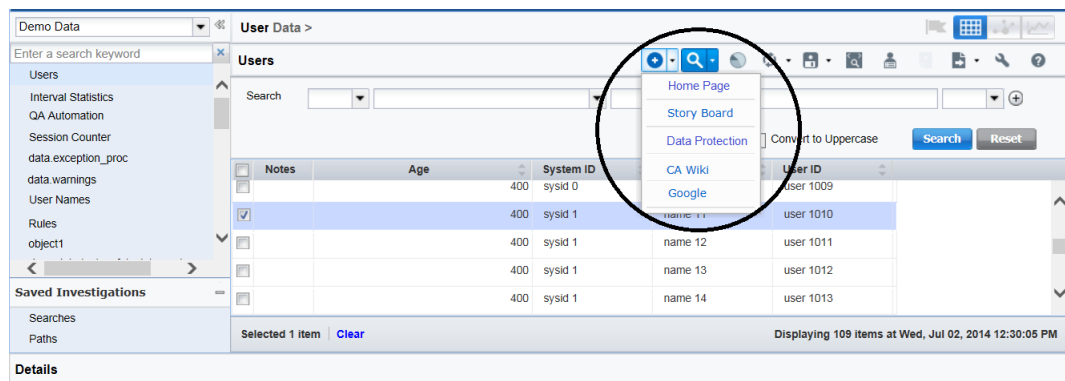


Note: For more information about Saved Investigations, see the *Product Guide*.

Launch a Custom Link

We have introduced a custom action button in the Investigator toolbar for launching custom links. The custom links are configurable through metadata. The custom action button lists the linked user interfaces, Web pages, and wizards customized for specific object types. You can access both internal and external links. The default link is available at the top of the list.

The custom action button is available in the Investigator and in the Custom Investigation modules. This enhancement provides you easy accessibility to object-related data sources.



Note: For more information about launching a custom link from the Investigator, see the *Product Guide*.

Supported Upgrades

CA Chorus Version 4.0 supports upgrade from Release 2.5 and Version 3.0. For the procedures, see the following guides:

- *Release 2.5 to Version 4.0 Upgrade Guide*
- *Version 3.0 to Version 4.0 Upgrade Guide*

Security Upgrade Jobs

The ETJ3040x and ETJ2540T security upgrade jobs simplify how you reuse your security IDs when upgrading the CA Chorus Platform. For more information, see the *Site Preparation Guide*.

- For Release 2.5 to Version 4.0 upgrades where you are using the same CA Chorus Administrator ID (CHORADM) for the Release 2.5 and Version 4.0 regions and are using CA Top Secret, use the ETJ2540T job.
- For Version 3.0 to Version 4.0 upgrades where you are using the same CHORADM for the Version 3.0 and Version 4.0 regions, use the ETJ3040x job.
- For all other upgrade scenarios, use the ETJI095x job.

The security upgrade job is identified as follows: ETJ3040x, where x equals A for CA ACF2, T for CA Top Secret, or R for IBM RACF. These jobs reside on the [CA Chorus product page](#) under Content Type, Recommended Reading and in the CETJJCL.

Split Bookshelves for CA Chorus and Disciplines

In Version 3.0, the CA Chorus bookshelf contained documentation for CA Chorus and its disciplines. In Version 4.0, we split the CA Chorus bookshelf into separate bookshelves for the CA Chorus Platform and the disciplines. Doing so improves the flexibility of the product and bookshelf delivery and improves the search capability.

The following bookshelves are now available in the Version 4.0 CA Chorus Knowledge Center:

- CA Chorus Platform Version 4.0
- CA Chorus for DB2 Database Management Version 4.0
- CA Chorus for Security and Compliance Management Version 4.0
- CA Chorus for Storage Management Version 3.0
- CA Chorus Infrastructure Management for Networks and Systems Version 3.0

Appendix A: Third-Party Acknowledgments

The following license agreements are available in the \Bookshelf\TPSA folder of the CA Chorus bookshelf:

- Adobe Flex Builder 3.0
- Adobe Flex SDK 3.6
- Apache Batik 1.8
- BIRT 2.5
- Cairngorm 2.2.1
- Eclipse RAP 2.1
- Errai 2.0.2
- Google Web Toolkit 2.4.0
- GWT Highcharts 1.4.0
- H2 1.3.168
- IBM DB2 Driver for JDBC and SQLJ 9.7
- JAXB 2.1.12
- jqRangeSlider 4.0
- Lucene 3.0.0
- Metawidget v.2.0
- Nutch 1.1
- Saxon-B 9.1.0.8
- Software under the Apache 2.0 License
- Software under the CDDL License
- Common Public License
- Software under the Eclipse 1.0 License
- Software under the LGPL License
- Software under the Mozilla Public License v1.1
- Spring Framework JAR 4.0.5
- Xalan-J 2.7.1
- xml-commons xml-apis 1.3.04
- XStream 1.3.1