

CA Chorus™

Upgrade Guide

Version 03.0.00, Third Edition



This Documentation, which includes embedded help systems and electronically distributed materials, (hereinafter referred to as the "Documentation") is for your informational purposes only and is subject to change or withdrawal by CA at any time. This Documentation is proprietary information of CA and may not be copied, transferred, reproduced, disclosed, modified or duplicated, in whole or in part, without the prior written consent of CA.

If you are a licensed user of the software product(s) addressed in the Documentation, you may print or otherwise make available a reasonable number of copies of the Documentation for internal use by you and your employees in connection with that software, provided that all CA copyright notices and legends are affixed to each reproduced copy.

The right to print or otherwise make available copies of the Documentation is limited to the period during which the applicable license for such software remains in full force and effect. Should the license terminate for any reason, it is your responsibility to certify in writing to CA that all copies and partial copies of the Documentation have been returned to CA or destroyed.

TO THE EXTENT PERMITTED BY APPLICABLE LAW, CA PROVIDES THIS DOCUMENTATION "AS IS" WITHOUT WARRANTY OF ANY KIND, INCLUDING WITHOUT LIMITATION, ANY IMPLIED WARRANTIES OF MERCHANTABILITY, FITNESS FOR A PARTICULAR PURPOSE, OR NONINFRINGEMENT. IN NO EVENT WILL CA BE LIABLE TO YOU OR ANY THIRD PARTY FOR ANY LOSS OR DAMAGE, DIRECT OR INDIRECT, FROM THE USE OF THIS DOCUMENTATION, INCLUDING WITHOUT LIMITATION, LOST PROFITS, LOST INVESTMENT, BUSINESS INTERRUPTION, GOODWILL, OR LOST DATA, EVEN IF CA IS EXPRESSLY ADVISED IN ADVANCE OF THE POSSIBILITY OF SUCH LOSS OR DAMAGE.

The use of any software product referenced in the Documentation is governed by the applicable license agreement and such license agreement is not modified in any way by the terms of this notice.

The manufacturer of this Documentation is CA.

Provided with "Restricted Rights." Use, duplication or disclosure by the United States Government is subject to the restrictions set forth in FAR Sections 12.212, 52.227-14, and 52.227-19(c)(1) - (2) and DFARS Section 252.227-7014(b)(3), as applicable, or their successors.

Copyright © 2014 CA. All rights reserved. All trademarks, trade names, service marks, and logos referenced herein belong to their respective companies.

Contact CA Technologies

Contact CA Support

For your convenience, CA Technologies provides one site where you can access the information that you need for your Home Office, Small Business, and Enterprise CA Technologies products. At <http://ca.com/support>, you can access the following resources:

- Online and telephone contact information for technical assistance and customer services
- Information about user communities and forums
- Product and documentation downloads
- CA Support policies and guidelines
- Other helpful resources appropriate for your product

Providing Feedback About Product Documentation

If you have comments or questions about CA Technologies product documentation, you can send a message to techpubs@ca.com.

To provide feedback about CA Technologies product documentation, complete our short customer survey which is available on the CA Support website at <http://ca.com/docs>.

CA Technologies Product References

This document references the following CA Technologies products:

- CA ACF2™ for z/OS (CA ACF2)
- CA Datacom®/AD (CA Datacom/AD)
- CA Detector® for DB2 for z/OS (CA Detector)
- CA Chorus™
- CA Chorus™ for DB2 Database Management
- CA Chorus™ for Security and Compliance Management
- CA Chorus™ for Storage Management
- CA Chorus™ Infrastructure Management for Networks and Systems
- CA Chorus™ Software Manager
- CA SYSVIEW®
- CA Top Secret® for z/OS (CA Top Secret)
- CA Vantage™ Storage Resource Manager (CA Vantage)

Documentation Changes

The following documentation updates have been made since the second edition of this documentation:

- [Legal Notices](#) (see page 2)—Updated to reflect public documentation legal disclaimer.
- [How to Upgrade from Release 2.5 to Version 3.0](#) (see page 10)
 - Added a reference to the new [Upgrade Process Overview](#) (see page 13) topic and graphic.
 - Simplified the procedure such that you must add a suffix.
- [Add the Time Series Facility Suffix](#) (see page 16)
 - Added more information about suffix limitations for TSF instances on the same LPAR.
 - Simplified the procedure such that you must add a suffix.
- [Upgrade CA Chorus for DB2 Database Management](#) (see page 17)—Added information about CHORTH.D.

The following documentation updates have been made since the first edition of this documentation:

- [How to Upgrade from Release 2.5 to Version 3.0](#) (see page 10)—Added a summary paragraph to highlight that an upgrade requires the installation of a new environment.
- [Upgrade from Release 2.5 to Version 3.0](#) (see page 14)—Updated the first four steps to explicitly tell users that they first must complete the steps in each *Site Preparation Guide* and the installation and deployment steps in the *Installation Guide*.
- [Upgrade CA Chorus for Security and Compliance Management](#) (see page 18)—Clarified E1MI0014 behavior in step 1.
- Discipline upgrade topics—Clarified the steps such that they start with configuration because the installation and deployment is covered in [Upgrade from Release 2.5 to Version 3.0](#) (see page 14).

Contents

Chapter 1: Upgrading Your Product **9**

- How to Upgrade from Release 2.5 to Version 3.0.....10
 - Upgrade Process Overview13
 - Upgrade from Release 2.5 to Version 3.014
 - Add the Time Series Facility Suffix16
 - Add the TSF Suffix to the Disciplines17
 - Upgrade CA Chorus for DB2 Database Management17
 - Upgrade CA Chorus for Security and Compliance Management18
 - Upgrade CA Chorus for Storage Management.....19

Chapter 1: Upgrading Your Product

How to Upgrade from Release 2.5 to Version 3.0

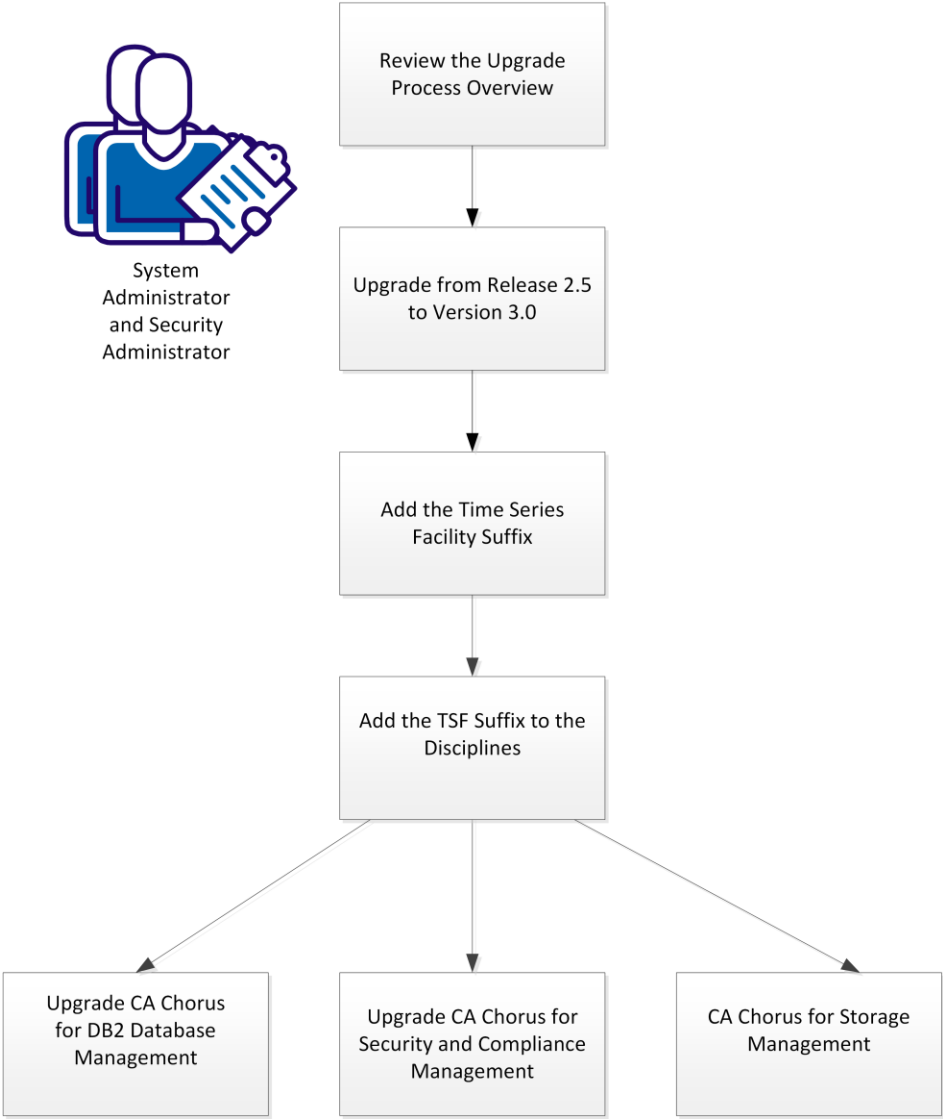
Version 3.0 supports upgrades from only Release 2.5.

If you plan to run multiple releases concurrently, see step 5 in [Upgrade from Release 2.5 to Version 3.0](#) (see page 14).

This scenario shows how a system administrator and security administrator upgrade CA Chorus from Release 2.5 to Version 3.0 to take advantage of the latest features and functionality.

This illustration shows the upgrade process:

How to Upgrade CA Chorus from Release 2.5 to Version 3.0

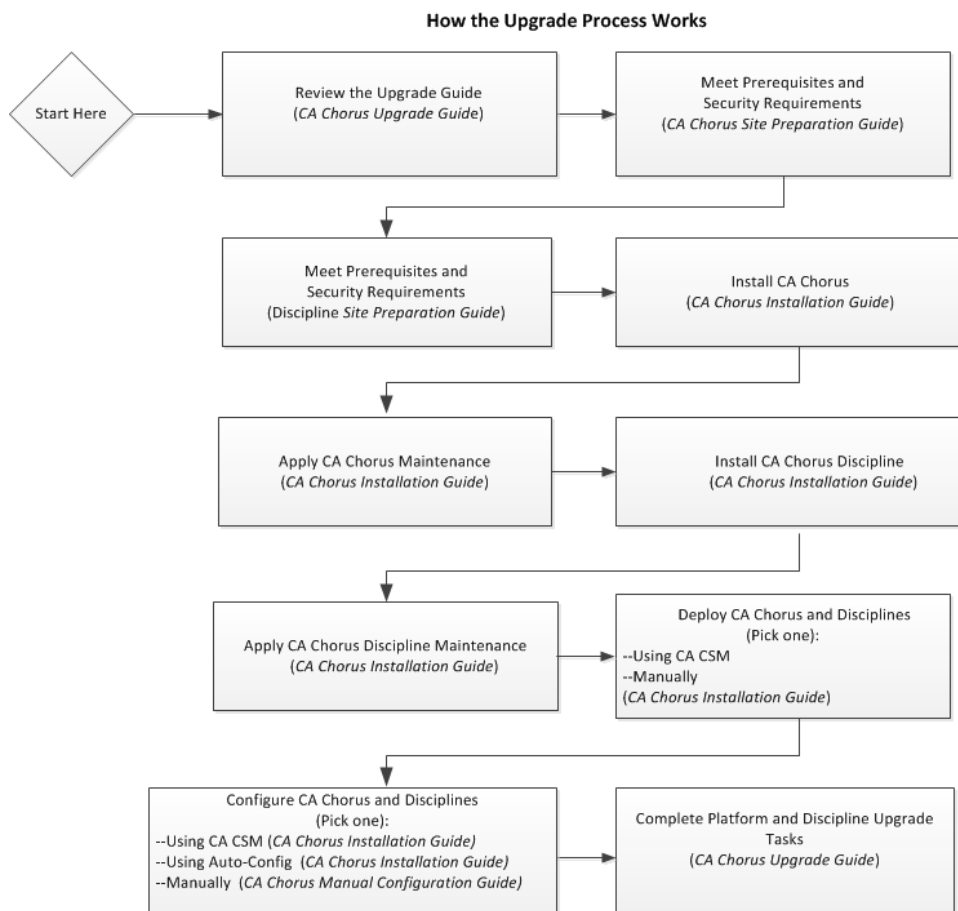


To upgrade your system, complete the following tasks:

1. [Review the Upgrade Process Overview](#) (see page 13).
2. [Upgrade from Release 2.5 to Version 3.0](#) (see page 14).
3. [Add the Time Series Facility Suffix](#) (see page 16).
4. [Add the TSF Suffix to the Disciplines](#) (see page 17).
5. Upgrade the applicable disciplines:
 - [Upgrade CA Chorus for DB2 Database Management](#) (see page 17)
 - [Upgrade CA Chorus for Security and Compliance Management](#) (see page 18)
 - [Upgrade CA Chorus for Storage Management](#) (see page 19)

Upgrade Process Overview

For the upgrade, you must install a new environment, which means you complete the steps in the *Site Preparation Guides* (platform and discipline) and the *Installation Guide*. You then finalize the configuration and migrate the data based on the steps in the *Upgrade Guide*. The following diagram illustrates this flow.



Upgrade from Release 2.5 to Version 3.0

To migrate the Release 2.5 system data to Version 3.0, install the releases side-by-side. Use the following procedure to upgrade to Version 3.0.

Note: The server startup service migrates the notes that are added in Release 2.5 to Version 3.0.

Follow these steps:

1. Complete the requirements checks and preparation procedures as documented in the *CA Chorus Site Preparation Guide*.
2. Complete the requirements checks and preparation procedures as documented in the applicable discipline *Site Preparation Guide*.
3. Install the platform and disciplines into a new CSI with a different high-level qualifier and USS path name. For the steps to do so, see the *Installation Guide*.
4. Deploy the products according to the steps in the *Installation Guide*.

Note: The remainder of this topic details the platform upgrade steps. At the end of this topic, you are directed to the applicable discipline topics for any special configuration notes and the upgrade steps.

5. Verify that Release 2.5 and Version 3.0 USS file systems are mounted. Use TSO ISHELL or CA SYSVIEW to verify that the directories are mounted in the path where CA Chorus is installed.
6. Complete the Version 3.0 configuration steps in the *Installation Guide*. If you plan to run each version concurrently, use different values for the following components in each version:
 - JBoss port numbers
 - Started task names
 - User ID and group values that are associated with the started tasks.

Note: The defaults in both versions are CHORADM and CHORGRP respectively. During the configuration, these values are specified in the ETJI0095 member in *chorus_runtime_hlq.CETJJCL*. For Release 2.5 the security setup job is named, ETJI0095. ETJI095x is the Version 3.0 name, where x indicates the security product (A for CA ACF2, T for CA Top Secret, and R for IBM RACF).
 - MUF name
 - Time Series Facility (TSF) suffix and port values.
7. Review all security commands and configuration requirements using the preparation worksheets. Verify that the CHORADM user and all users logging in to CA Chorus have the proper permissions.

8. Migrate (copy) Release 2.5 database files to Version 3.0 by running the FTPH2DB job in *chorus_30_runtime_hlq.CETJJCL* on the systems where Version 3.0 is installed.

Note: This job uses FTP so that the copy can be made across systems or on one system.

Important! The user that runs this job must have at least read access for the Release 2.5 USS file systems. This user must also have superuser (su) authority for the Version 3.0 USS file systems. Do not run this job with the product active at either release level.

9. Complete the following tasks to migrate stored TSF data from Version 2.5 to Version 3.0:
 - a. Run the CHTSDBBK job in *chorus_2.5_runtime_hlq.CETJJCL* against your Release 2.5 installation to create a backup version of the TSF database.
 - b. Run the CHTSDBLD job in *chorus_30_runtime_hlq.CETJJCL* against your Version 3.0 installation to load the backed up TSF data from Release 2.5.

Note: The Release 2.5 CHORMUF started task must be active when you run this job.

Important! Before you run this job, update the TSF4003B backup data set DD to use the name that was created when running the Release 2.5 CHTSDBBK job in the previous step.

Note: The Version 3.0 CHORMUF started task must be active when you run this job.

Note: For more information about the TSF jobs, see the *Administration Guide*.

10. Migrate (copy) Release 2.5 user-uploaded documentation and crawled website indexes to Version 3.0:

Note: These jobs use FTP so that a copy can be made across systems or on one system.

Important! The user that runs these jobs must have read and write access to the Release 2.5 and superuser (su) authority to the Version 3.0 file systems.

- a. Run the FTPDOC1 job in *chorus_30_runtime_hlq.CETJJCL* on the system where Release 2.5 is installed. This job zips the files that require migration.
- b. Run the FTPDOC2 job in *chorus_30_runtime_hlq.CETJJCL* on the system where Version 3.0 is installed. This job performs the following tasks:
 - Creates the target directories.
 - FTPs the zip file from the remote or local system in the previous step and unzips the copied files.
 - Reindexes the copied user uploaded documentation. The indexes are created in `INSTALL_HOME/userdoc/mfui/index/user/upload/index`.

- c. (Optional) If non-Latin Unicode web sites have previously been indexed in your Knowledge Center, reindex them following the upgrade to Version 3.0.

Note: For the steps to index web sites, see the *Product Guide*.

The platform upgrade is complete. You now must add your TSF SUFFIX and finalize the applicable discipline upgrades.

Add the Time Series Facility Suffix

A suffix serves as the identifier for each CHORTSF engine. By design, CHORTSF and CHORTSFR communicate across two LPARs and require the same SUFFIX. However, within a single LPAR, multiple CHORTSF or CHORTSFR instances cannot share a SUFFIX.

As shipped, neither TSFSUFFIX nor export TSFII is exposed. The default value is described as PROD and represented as ' ' (blank). The TSFSUFFIX identifier is shown in the TSF startup log message ETJTS106I.

Follow these steps:

1. Add the TSFSUFFIX=*c|n* parameter to the TSFPARMS member in *chorus_30_runtime_hlq.CETJOPTN*.

This statement specifies a one-character alphabetic (c) or numeric (n) identifier for the TSF region. The valid values are A to Z, or 0 through 9.

2. Add the export TSFII=*'c|n'* parameter to the ENVETJ member in *chorus_30_runtime_hlq.CETJOPTN*.

This statement specifies a one-character alphabetic (c) or numeric (n) identifier for the TSF region in the JBoss environment settings. This value must match the value that is specified for TSFSUFFIX. The value must be in single quotes.

3. Add the TSFSUFFIX=*c|n* parameter to the TSFRPRMS member in *chorus_30_runtime_hlq.CETJOPTN*. Using a relay is optional.
4. Activate the changes by stopping and restarting the CHORTSF, CHORJBOS, and CHORTSFR started tasks.

Add the TSF Suffix to the Disciplines

To update the disciplines to add the TSF suffix to feed data to more than one TSF instance, complete the following tasks:

- For CA Chorus for DB2 Database Management, update the TPDTFEED started task to send data to the additional instance.

Note: For more information about updating TPDTFEED, see the *CA Chorus Manual Configuration Guide*.

- For CA Chorus for Security and Compliance Management, update the TSFSUFF parameter in CA ACF2 or the CHORUSTSFSX parameter in CA Top Secret to send data to the additional instance.

Note: For more information about these parameters, see the *CA ACF2 Administration Guide* or *CA Top Secret Control Options Guide*.

- For CA Chorus for Storage Management, update the CHTSFSUF parameter in CA Vantage to send data to the additional instance.

Note: For more information about CHTSFSUF, see the *CA Vantage Configuration Guide*.

Upgrade CA Chorus for DB2 Database Management

To migrate the Release 2.5 system data to Version 3.0, install the releases side-by-side. Use the following procedure to upgrade to Version 3.0.

Note: If you reuse security IDs from Version 2.0 or Release 2.5, add the CHORTH user ID to your Version 3.0 implementation. CHORTH is used as the secondary login ID for logins using a PassTicket. For more information about assigning permissions for CHORTH and reusing security IDs, see the *CA Chorus Site Preparation Guide*.

Follow these steps:

1. Complete CA Chorus for DB2 Database Management Version 3.0 configuration. If you plan to run each version concurrently, use different values for the Xnet ports in each version.
2. Populate the Version 3.0 E3KCFG10 member in *your_chorus_hlq.CE3KPARM* with the contents of the Release 2.5 *db2tools.cfg* file. This file is located in */cai/cetjr2m5/config* by default in Release 2.5. To see the Release 2.5 definitions, use E3KI0010 in *your_chorusdba_hlq.CE3KJCL*.

3. To limit the number of alerts that appear in the Alerts module, use the Filter option from the Alerts dialog in Version 3.0. In the previous release, you limited the alerts during the module configuration.
4. (Optional) To feed data to multiple Time Series Facility (TSF) instances, update the TPDTFEED started task to send data to the additional instance.

Note: For more information about sending data to multiple TSF regions, see the *CA Chorus for DB2 Database Management Site Preparation Guide*. For more information, see How to Upgrade from Version 3.0 to Version 4.0.

The upgrade is complete.

Upgrade CA Chorus for Security and Compliance Management

To migrate the Version 2.5 system data to Version 3.0, install the releases side-by-side. Use the following procedure to upgrade to Version 3.0.

Follow these steps:

1. Complete the Version 3.0 configuration for CA Chorus for Security and Compliance Management.

Important! Before execution of the E1MI0010 job in Version 3.0, populate the SECDBCFG member in *your_chorus_hlq.CE1MOPTV*. This member contains the definitions of each Compliance Information Analysis (CIA) and CA Compliance Manager database from Release 2.5 that you want to be connected to in Version 3.0. Use E1MI0010 in *your_chorussec_v2.5_hlq.CE1MJCL* to see the Release 2.5 definitions.

Note: If the default values did not change in E1MI0014 (that is, LDAP and CMGR host/port/suffix are still the same), copy the 2.5 config files (acf2_config.xml, cmgr_config.xml, tss_config.xml) into your new 3.0 USS directory. If the values did change, run the E1MI0014 with the updated USS runtime directory and configuration information.

2. Complete the following CIA tasks:
 - If you are using DB2 for CIA in Release 2.5 and Version 3.0, only one CIA database can be supported. No additional changes are needed.
 - If you are using DB2 for CIA in Release 2.5 and CA Datacom/AD in Version 3.0, a new conversion and load are required into the CIA CA Datacom/AD database.
 - Execute the IBM DB2 UNLOAD utility against the CIA DB2 repository to create an output unload data set that contains records in DB2 load format.
 - Customize and submit the SAMPJCL job CIALOADC.

Note: For more information about migrating CIA data, see the *CA ACF2 Compliance Information Analysis Guide* or *CA Top Secret Compliance Information Analysis Guide*.

3. Complete the following CA Compliance Manager tasks:
 - If you are using DB2 for CA Compliance Manager Monitor data in Release 2.5 and Version 3.0, customize the SAMPJCL job CMGRIUNL (Change Monitor DB2 Conversion utility) to pick up DB2 schema changes. This job converts and reloads the monitor database.
 - If you are using DB2 for CA Compliance Manager in Release 2.5 and CA Datacom/AD in Version 3.0:
 - a. Execute the IBM DB2 UNLOAD utility against the warehouse, data mart, and monitor to create an output load data set that contains records in DB2 load format.
 - b. Customize and submit SAMPJCL jobs as follows to migrate the warehouse, data mart, and monitor unloaded data:
 - * CMGRDDCM (Warehouse and Data Mart CA Datacom/AD Conversion utility)
 - * CMGRCDMU (Change Monitor Data Migration utility)
 - If you are splitting the data between DB2 and CA Datacom/AD, see the *CA Compliance Manager Implementation Guide* for the required configuration steps.

Note: For more information about these CA Compliance Manager jobs and additional configuration steps that are needed, see the *CA Compliance Manager Implementation Guide*. Use the CDT9PMOD job to convert the policy database.

Note: For more information about converting the policy database or using CA Datacom/AD, see the *CA LDAP Server Product Guide*.

4. If you plan to feed data to more than one TSF instance, update the TSFSUFF parameter in CA ACF2 or the CHORUSTSFSX parameter in CA Top Secret to send data to the additional instance.

Note: For more information about these parameters, see the *CA ACF2 Administration Guide* or *CA Top Secret Control Options Guide*, respectively. For more information, see Upgrade from Version 3.0 to Version 4.0.

The upgrade is complete.

Upgrade CA Chorus for Storage Management

To migrate the Release 2.5 system data to Version 3.0, install the releases side-by-side. Use the following procedure to upgrade to Version 3.0.

Follow these steps:

1. Complete the following Storage discipline configuration tasks:
 - a. Run the E4HI006, E4HI0007, E4HI0008, and E4HI0009 jobs in *your_chorusstor_hlq.CE4HJCL*.

- b. Run the E4HDUPDT job in *your_chorusstor_hlq.CE4HJCL*. This job performs the following tasks:
 - Copies the Release 2.5 Web Client Derby database (Quick Links) into the CA Chorus Version 3.0 environment.
 - Preconfigures the JBoss Derby database bootstrap encryption password using the CA Chorus Release 2.5 settings.
 - Updates the E4HI0010 JCL member in *your_chorusstor_hlq.CE4HJCL* with information taken from the control statements and the CA Chorus Release 2.5 environment. This job also adds the E4HJBCRD job card statements.
 - Copies the CA Vantage Release 2.5 configuration to Version 3.0 (storage discipline configuration).
 - c. Run the E4HI0010 job in *your_chorusstor_hlq.CE4HJCL* without change to configure a single CA Vantage host. To add multiple CA Vantage hosts, edit E4HI0010 as described in the member, and submit.
 - d. Edit the E4HI0011 Cost Analysis configuration job in *your_chorusstor_hlq.CE4HJCL* as described in the member, and submit.
2. (Optional) To feed data to more than one TSF instance, update the CHTSFSUF parameter in CA Vantage to send data to the additional instance.
- Note:** For more information about the CHTSFSUF parameter, see the *CA Vantage Configuration Guide*. For more information, see How to Upgrade from Version 3.0 to Version 4.0.
3. Activate your changes by restarting the JBoss STC.
- The upgrade is complete.