

# CA ERwin<sup>®</sup> Data Modeler

## Release Notes

Version 9.0.0



This Documentation, which includes embedded help systems and electronically distributed materials, (hereinafter referred to as the "Documentation") is for your informational purposes only and is subject to change or withdrawal by CA at any time.

This Documentation may not be copied, transferred, reproduced, disclosed, modified or duplicated, in whole or in part, without the prior written consent of CA. This Documentation is confidential and proprietary information of CA and may not be disclosed by you or used for any purpose other than as may be permitted in (i) a separate agreement between you and CA governing your use of the CA software to which the Documentation relates; or (ii) a separate confidentiality agreement between you and CA.

Notwithstanding the foregoing, if you are a licensed user of the software product(s) addressed in the Documentation, you may print or otherwise make available a reasonable number of copies of the Documentation for internal use by you and your employees in connection with that software, provided that all CA copyright notices and legends are affixed to each reproduced copy.

The right to print or otherwise make available copies of the Documentation is limited to the period during which the applicable license for such software remains in full force and effect. Should the license terminate for any reason, it is your responsibility to certify in writing to CA that all copies and partial copies of the Documentation have been returned to CA or destroyed.

TO THE EXTENT PERMITTED BY APPLICABLE LAW, CA PROVIDES THIS DOCUMENTATION "AS IS" WITHOUT WARRANTY OF ANY KIND, INCLUDING WITHOUT LIMITATION, ANY IMPLIED WARRANTIES OF MERCHANTABILITY, FITNESS FOR A PARTICULAR PURPOSE, OR NONINFRINGEMENT. IN NO EVENT WILL CA BE LIABLE TO YOU OR ANY THIRD PARTY FOR ANY LOSS OR DAMAGE, DIRECT OR INDIRECT, FROM THE USE OF THIS DOCUMENTATION, INCLUDING WITHOUT LIMITATION, LOST PROFITS, LOST INVESTMENT, BUSINESS INTERRUPTION, GOODWILL, OR LOST DATA, EVEN IF CA IS EXPRESSLY ADVISED IN ADVANCE OF THE POSSIBILITY OF SUCH LOSS OR DAMAGE.

The use of any software product referenced in the Documentation is governed by the applicable license agreement and such license agreement is not modified in any way by the terms of this notice.

The manufacturer of this Documentation is CA.

Provided with "Restricted Rights." Use, duplication or disclosure by the United States Government is subject to the restrictions set forth in FAR Sections 12.212, 52.227-14, and 52.227-19(c)(1) - (2) and DFARS Section 252.227-7014(b)(3), as applicable, or their successors.

Copyright © 2012 CA. All rights reserved. All trademarks, trade names, service marks, and logos referenced herein belong to their respective companies.

# Contact CA Technologies

## Understanding your Support

Review [support maintenance programs and offerings](#).

## Registering for Support

Access the CA Support [online registration site](#) to register for product support.

## Accessing Technical Support

For your convenience, CA Technologies provides easy access to "One Stop" support for all editions of [CA ERwin Data Modeler](#), and includes the following:

- Online and telephone contact information for technical assistance and customer services
- Information about user communities and forums
- Product and documentation downloads
- CA Support policies and guidelines
- Other helpful resources appropriate for your product

For information about other Home Office, Small Business, and Enterprise CA Technologies products, visit <http://ca.com/support>.

## Provide Feedback

If you have comments or questions about CA Technologies product documentation, you can send a message to [techpubs@ca.com](mailto:techpubs@ca.com).

If you would like to provide feedback about CA Technologies product documentation, complete our short [customer survey](#), which is also available on the CA Support website, found at <http://ca.com/docs>.

## CA ERwin Data Modeler News and Events

Visit [www.erwin.com](http://www.erwin.com) to get up-to-date news, announcements, and events. View video demos and read up on customer success stories and articles by industry experts.

## Documentation Changes

The following documentation updates have been made since the last release (r9.0) of this documentation:

- **New Features and Enhancements**—This chapter describes the new features, enhancements, and changes implemented for r9.1.
- **Fixed Issues**—This chapter describes the issues that are fixed for r9.1.
- **Documentation Formats and Deliverables**—Updated to include the addition of role based guides in a new section in the bookshelf.

The following documentation updates have been made since the last release (r8.2) of this documentation:

- [New Features and Enhancements](#) (see page 17)—This chapter describes the new features, enhancements, and changes implemented for r9.
- [Operating System Support](#) (see page 32)—Added version clarifier.
- [System Requirements](#) (see page 32)—Added the requirements for Mart server and web server.
- [Documentation Formats and Deliverables](#) (see page 51)—Updated to include the addition of role based guides in a new section in the bookshelf.

# Contents

---

## Chapter 1: CA ERwin Data Modeler Editions **9**

Community Edition.....	10
Standard Edition.....	12
Workgroup Edition.....	13
Navigator Edition.....	14
CA ERwin Data Modeler for Microsoft SQL Azure.....	14

## Chapter 2: New Features and Enhancements **17**

Time-Based Licensing.....	17
Borrow a License.....	18
Edit the Options File.....	19
Mart Architecture.....	20
Mart Server Installation.....	21
Mart Upgrade Utility.....	21
CA ERwin Mart Administrator.....	22
Mart Users.....	23
Change or Retrieve Mart Password from CA ERwin DM.....	24
Work Offline or Detach Models.....	25
Bind a Mart Model to your Model.....	25
Live Permission Checking in Mart.....	26
Manage Sessions.....	26
Manage Catalogs.....	27
Redesigned Naming Standards Tool.....	28
Redesigned Data Type Standards.....	28
Meta Integration Bridges Updated.....	29

## Chapter 3: System Information **31**

Release Numbering Scheme in CA ERwin Data Modeler.....	31
Operating System Support.....	32
System Requirements.....	32
Administrative Privileges Required.....	34
Current User Installation.....	34
Supported Target Server Databases.....	35
CA ERwin Data Modeler Workgroup Edition Requirements.....	35
Administrator Server System Requirements.....	35
DBMS Requirements.....	36

---

Client Workstation Requirements.....	37
CA ERwin Data Modeler Navigator Edition Requirements.....	37
Support for CA ERwin Data Modeler Workgroup Edition .....	37

## **Chapter 4: Installation Considerations for CA ERwin Data Modeler Workgroup Edition 39**

Microsoft SQL Server 2005 Permissions.....	39
Specify Use of Foreign Characters With Microsoft SQL Server 2005 .....	40
Specify Use of Foreign Characters With Microsoft SQL Server 2000 .....	40

## **Chapter 5: Installation Considerations for CA ERwin Data Modeler Navigator Edition 41**

Silent Install .....	41
----------------------	----

## **Chapter 6: General Considerations for Using CA ERwin Data Modeler Workgroup Edition 43**

Model Conversion and Complete Compare Differences.....	43
Model Display in the Difference Reconciliation Dialog .....	43
Uninstalling CA ERwin Data Modeler Workgroup Edition.....	43

## **Chapter 7: General Considerations for Using CA ERwin Data Modeler Navigator Edition 45**

Model Display in the Difference Reconciliation Dialog .....	45
Help Files .....	45

## **Chapter 8: Known Issues 47**

SQL 1105 Error .....	47
Model and Version Name Limit on Oracle .....	47
Editing UDP Values in the Bulk Editor .....	48
CA ERwin Data Modeler and Crystal Reports Shell Installation .....	48
Silent Installation.....	48
Upgrading CA ERwin Data Modeler on Windows Server 2003 .....	49
Mart Reports Work with Crystal Reports Developer Edition .....	49
Error Failed to Get Latest Version from Mart .....	49
Model Versions do not Open in the Same Instance .....	49

## **Chapter 9: Documentation 51**

Documentation Formats and Deliverables.....	51
---	----

---

Technical Documentation Series .....	53
Release Numbers .....	53
<b>Appendix A: Appendix</b>	<b>55</b>
<b>Appendix B: Third Party Software Acknowledgment</b>	<b>57</b>



# Chapter 1: CA ERwin Data Modeler Editions

---

The following editions of CA ERwin Data Modeler are available:

[Community Edition](#) (see page 10)

[Standard Edition](#) (see page 12)

Workgroup Edition

[Navigator Edition](#) (see page 14)

[CA ERwin Data Modeler for Microsoft SQL Azure](#) (see page 14)

This *Release Notes* details new features, enhancements, updates, and known issues for all editions of CA ERwin Data Modeler.

**Note:** Depending on the edition of CA ERwin Data Modeler you are using, not all features may be enabled for use. For more information about the differences between versions, click one of the Edition links.

## Community Edition

The Community Edition of CA ERwin Data Modeler includes a limited number of features from the main product, and is designed to help Data Architects learn data modeling techniques, create simple data models, and learn about the design and maintenance of a production database.

Most of the basic features of CA ERwin Data Modeler are available, with limited access to the following features:

### **25 Entities/Tables Per Model**

You can reverse-engineer, import using Metadata Integration (MITI) bridges, or create up to 25 entities/tables per model. There is no restriction on the number of views you can create.

If you attempt to reverse engineer a script or database with more than 25 tables, or attempt to open a model with more than 25 tables, a warning message displays, reminding you of the object creation limitation in the Community Edition. For Oracle and SQL Server, the reverse engineer process stops after creating 25 tables in the new model. For other databases, a warning message displays, stating that the import feature is disabled.

**Note:** Some operations that include the creation of temporary tables may also result in exceeding the allowed table limit. For example, if you reverse engineer a DB2/LUW script that contains 25 tables and a materialized view, the temporary table used to create the materialized view will cause you to exceed the allowed table limit for the model.

### **Read-Only Complete Compare**

You can use Complete Compare features to evaluate and compare models, but you cannot commit changes you make in the Complete Compare wizard to the models you compare. The "Finish" button is disabled in the Resolve Differences dialog. In addition, demand loading of databases and Alter Script generation are not supported.

**Note:** If you are working with a database as part of the compare process, only the first 25 tables are reverse engineered to the model used during the compare. This may result in problems in the Complete Compare Resolve Differences dialog, where objects and properties between the models will not match. To avoid problems, work with a database that has fewer than 25 tables.

### **Save As**

You can save your models in the native \*.erwin format or as a template (\*.erwin\_tmpl). Save As XML, ER1, and ERT is not supported.

### File Open

You can open a model in \*.erwin or \*.erwin\_tmpl format, and a SQL DDL file in the format \*.sql, \*.ers, or \*.ddl.

### Print a Model

Support for printing models is included in the Community Edition, although the output includes a watermark.

### Working with Transformations in the Community Edition

You can work with transformations in the Community Edition to implement design decisions, such as partitioning tables. However, because of the limitation to 25 entities/tables per model, some transformation operations may not be possible. For example, if you are near the limit of 25 tables and choose to partition a table, you may surpass the table limit, and the transformation operation will not complete.

The Advisories Pane on the main workplace window reports a message reminding you that the intended action did not complete because of the object creation limit.

### Limited Database Support

Support is included for modeling using the following databases:

- Oracle (10.x/11.x)
- SQL Server (2005/2008)
- DB2 LUW (9.1, 9.5, and 9.7)
- MySQL (5.x, using ODBC)
- ODBC (2.0, 3.0)
- Sybase (12.5/15)

### Limited Access to Metadata Integration (MITI) Bridges

Support is limited to the following Metadata Integration (MITI) Bridges for import. Export using Metadata Integration (MITI) Bridges is not supported.

- Sybase PowerDesigner OOM 9.x to 15.x (using UML XMI)
- Sybase PowerDesigner CDM 6.x
- Sybase PowerDesigner CDM 7.5 to 15.x
- Sybase PowerDesigner PDM 6.1.x
- Sybase PowerDesigner 7.5 to 15.x
- Embarcadero ER/Studio
- Embarcadero ER/Studio (using DM1)
- OMG/CWM 1.x XMI 1.x
- OMG/UML 1.x XMI 1.x

**Note:** If the file you import has more than 25 tables, the Community Edition imports only the first 25 tables.

Other limitations of the Community Edition include the following:

- A copy of Crystal Reports 2008 is not included with the Community Edition.
- Features supporting the creation and implementation of data type standards are not enabled.
- Access to the CA ERwin Data Modeler Workgroup Edition is disabled. When working with Complete Compare, the option to compare your model with a model in a mart is disabled.
- The Community Edition license is valid for one year. After one year you can reinstall the Community Edition with a new license, or purchase and install a full version of the product. You can install and use the Community Edition without entering a license key for 30 days from the date you installed the product.

**Note:** If you attempt to access a disabled feature in the Community Edition, a pop-up message appears to remind you the feature is not available.

## Documentation

The Community Edition includes online help files and PDF guides available on the ERwin Bookshelf, which is accessible from the Start menu.

To view PDF files, you must download and install the Adobe Reader from the Adobe website if it is not already installed on your computer.

## Standard Edition

CA ERwin Data Modeler Standard Edition provides all the data modeling features used by Data Architects, Data Administrators, and Application Administrators, but does not include any workgroup modeling capabilities. You can use this edition as a standalone modeling tool, and as a Workgroup Edition client that can access and work with data models stored in a mart. When you enable data movement or dimensional modeling features, it provides a tool for assisting Data Administrators and Capacity Managers design data warehouses. Partners can use the API to create add-on solutions to CA ERwin Data Modeler. With the optional SQL Azure extension, you can take advantage of using SQL Azure as a target database.

## Workgroup Edition

CA ERwin Data Modeler Workgroup Edition provides all the data modeling features used by Data Architects and also includes workgroup modeling capabilities used by Database Administrators, Application Administrators, and Application Owners. It provides conflict resolution, versioning, security and standardization for multi-user modeling. Workgroup modeling operates in a client/server environment so processing is shared between the user client workstation and the server where the models are stored. Users access the stored models through a client, such as CA ERwin Data Modeler. Models are held in a platform and network independent database or mart that resides on a central server, using Microsoft SQL Server, Oracle, or Sybase as the host database. With the optional SQL Azure extension, you can take advantage of using SQL Azure as a target database.

The key features of CA ERwin Data Modeler Workgroup Edition include:

### **Web-based administrator (CA ERwin Mart Administrator)**

Helps the administrator administer the Mart. The administrator creates the Mart database, installs and configures CA ERwin Mart Administrator before users can connect to the Mart. CA ERwin Mart Administrator is hosted on a web server and is accessed through an Internet browser.

### **Model change impact analysis**

Provides a change summary showing the impact of changes and the history of the affected model objects, allowing you to select which changes to apply to the model repository.

### **Version management**

Lets Data Architects store, access and analyze the history of a model and the changes made to it, lock down specific versions, run difference reports between versions, and seamlessly roll back models to previous states as required.

### **Concurrent model access with optional model locking**

Allows multiple users to concurrently work on a given model without compromising the integration and integrity of their parallel efforts.

The administrator installs the program and initializes the database on the DBMS server. The administrator also has the responsibility of setting up the library structure in which models are organized, and assigning security profiles to users. Administration overhead is relatively low and proportional to the number and activity level of the users. After a model is saved to the database, control of who can work on the model and how changes are saved to the model is handled by security, making it possible for workgroups to work on large models without confusion. CA ERwin Data Modeler Workgroup Edition supports many security and administrative features related to its multiuser capabilities and the client/server environment in which it operates. For this reason, routine management is usually performed by a dedicated administrator. Administrators can find detailed information regarding their tasks and responsibilities in the CA ERwin Data Modeler Workgroup Edition *Administration Guide*.

You can also use CA ERwin Data Modeler Navigator Edition as a client. Read-only access is permitted to data models, so your workgroup can use this client to share information with others without the risk that unauthorized changes might be saved to the mart.

## Navigator Edition

CA ERwin Data Modeler Navigator Edition provides a cost-effective way to provide read-only access to models built with CA ERwin Data Modeler for viewing and analysis. This edition does not permit you to make any changes to models.

The key features of CA ERwin Data Modeler Navigator Edition include:

### Read-only access

Read-only access is provided to models created by CA ERwin Data Modeler and it can also be used as a Workgroup Edition client for viewing a data model stored in a mart. Use the Navigator Edition to easily share model information without the risk of unauthorized changes to a model.

### Navigation and Viewing

Provides those who need to view models, but not update them, full navigation and viewing of data models.

### Reporting and Publication

Offers reporting and printing capabilities that generate in a variety of formats, including HTML and PDF.

## CA ERwin Data Modeler for Microsoft SQL Azure

If you plan to use SQL Azure as your target server with CA ERwin Data Modeler, verify that your SQL Azure license is present either on the computer on which you plan to run CA ERwin Data Modeler, or on the License Server. This means, if you are using a local CA ERwin DM license, then you must have the license for SQL Azure locally. If you are using a License Server to get the CA ERwin DM license, then you must have the license for SQL Azure on the License Server. If you do not have a SQL Azure license, you cannot select SQL Azure as a target server. This requirement is effective for all editions of CA ERwin Data Modeler, including Community Edition.

The following tables compare the differences in CA ERwin Data Modeler functionality depending on whether you are using the SQL Azure extension:

Community Edition with SQL Azure Extension
Limited database support, however SQL Azure is available as a target server for new models and deriving models
SQL Azure models can be opened directly

<b>Community Edition with SQL Azure Extension</b>
Opening a file in XML format is supported
Alter Script in Forward Engineering is enabled only for SQL Azure models
No entity/table volume limitation for SQL Azure models only
<b>Notes:</b> <ul style="list-style-type: none"> <li>■ You can reverse engineer from any of the supported target server databases, but when the reverse engineer process finishes, switch to one of the available CE target server databases (DB2 for LUW, MySQL, ODBC/Generic, Oracle, SQL Azure, SQL Server, or Sybase).</li> <li>■ If you attempt to reverse engineer more than 25 entities/tables, verify that your target server is SQL Azure. If it is not, then only the first 25 entities/tables are converted and the rest are removed.</li> </ul>
On-demand loading and model saving during Complete Compare is enabled only for SQL Azure models
Printing a SQL Azure model is supported and the output does not contain a watermark
Data type standards are supported
Only SQL Azure models can be saved in any of the available formats
Access to marts (workgroup modeling) is not supported
Full use of all available MITI import and export bridges
Crystal Reports is supported

<b>Standard Edition</b>	<b>Standard Edition with SQL Azure Extension</b>
SQL Azure is not available as a target server for new models and deriving models	SQL Azure is available as a target server for new models and deriving models
Opening a SQL Azure model launches a dialog prompting you to select a different target server	SQL Azure models can be opened directly
SQL Azure is not an option in the CA ERwin Data Modeler Target Server dialog	SQL Azure is available for selection in the CA ERwin Data Modeler Target Server dialog

<b>Workgroup Edition</b>	<b>Workgroup Edition with SQL Azure Extension</b>
SQL Azure is not available as a target server for new models and deriving models	SQL Azure is available as a target server for new models and deriving models
Opening a SQL Azure model launches a dialog prompting you to select a different target server	SQL Azure models can be opened directly
SQL Azure is not an option in the CA ERwin Data Modeler Target Server dialog	SQL Azure is available for selection in the CA ERwin Data Modeler Target Server dialog
Mart access is disabled for SQL Azure models	Mart access is enabled for SQL Azure models



# Chapter 2: New Features and Enhancements

---

This section of the Release Notes for CA ERwin Data Modeler documents new features and enhancements for Version 9.0.

This section contains the following topics:

[Time-Based Licensing](#) (see page 17)

[Borrow a License](#) (see page 18)

[Mart Architecture](#) (see page 20)

[Mart Server Installation](#) (see page 21)

[Mart Upgrade Utility](#) (see page 21)

[CA ERwin Mart Administrator](#) (see page 22)

[Mart Users](#) (see page 23)

[Change or Retrieve Mart Password from CA ERwin DM](#) (see page 24)

[Work Offline or Detach Models](#) (see page 25)

[Bind a Mart Model to your Model](#) (see page 25)

[Live Permission Checking in Mart](#) (see page 26)

[Manage Sessions](#) (see page 26)

[Manage Catalogs](#) (see page 27)

[Redesigned Naming Standards Tool](#) (see page 28)

[Redesigned Data Type Standards](#) (see page 28)

[Meta Integration Bridges Updated](#) (see page 29)

## Time-Based Licensing

CA ERwin Data Modeler version 9 includes a time-based embedded maintenance license. This license lets you use CA ERwin Data Modeler for a specific period. This means, if there are any new releases in the specified period, you can upgrade to it. When the license expires, you have to buy a new license to upgrade. The time-based license is coupled with Local and Concurrent licenses.

For example, you have purchased a node lock license for CA ERwin Data Modeler version 9.0 on Sept 1, 2012 with three years of maintenance. The license expires on August 31, 2015. After August 31, 2015, you must purchase a new license for any upgrade in CA ERwin Data Modeler.

## Borrow a License

The Mobile licensing feature enables you to borrow a license from a License Server on any mobile device that supports CA ERwin DM. By default, the maximum period for which a license is borrowed is 168 hours. However, you can change this.

**To borrow a license, Follow these steps:**

1. Open CA ERwin DM.  
The CA ERwin Data Modeler Licensing dialog appears.
2. Click Acquire concurrent use Workgroup Edition license or Acquire concurrent use Standard Edition license.
3. In the Server Path field, type the license server details.  
This Server Path detail is reflected in the Help, Licensing dialog.
4. Select the Return Date checkbox and specify the return date and time.
5. (Optional) Select the *Remember the licensing options and do not show this dialog again* checkbox.
6. Click OK.

A license is checked out from the License Server and the rights are available on your local computer.

To return a license before it expires, start CA ERwin DM and enter the server path in the CA ERwin Data Modeler Licensing dialog. After CA ERwin DM opens, click Help, Licensing, and then click Return Borrowed Licenses Early.

**Note:** If a license expires or is returned before it expires, you have four hours of buffer time to save your work. After four hours of the expiry of the license, CA ERwin DM closes.

When the license expires, one of the following events happen:

- If the client computer is connected to the License Server and a concurrent license is available, CA ERwin DM checks out a license. If no concurrent license is available, a warning dialog appears and CA ERwin DM closes after four hours.
- If the client computer is not connected to the License Server, CA ERwin DM notifies users about the loss of connectivity with the License Server.

## Edit the Options File

When you install the License Server, the *erwinmod.opt* file is copied to the installation folder. You have the option to edit this file and specify details such as the number of licenses that cannot be borrowed and the maximum hours for which a license can be borrowed.

**Important!** If you edit the name of the options file, the license server fails to recognize the options file and ignores it. Even if the options file is deleted you can still borrow license from the license server.

### Follow these steps:

1. Open the *erwinmod.opt* file.

The file opens and displays several lines of text in the following format:

```
BORROW_LOWWATER license_name number.
```

An example of *license\_name* is Standard.

2. To set the number of licenses that cannot be borrowed, follow these steps:

- a. Go to the line that has the license name that you want to change.
- b. Change the number.

The new number is the number of licenses that cannot be borrowed.

**Note:** Do not reserve an uncounted license for borrowing. If you do so, you will not be able to borrow licenses.

3. To set the maximum number of hours for which a license can be borrowed, add the following line:

```
MAX_BORROW_HOURS license_name num_hours
```

This parameter is not present in the options file and you have type it manually.

For example, `MAX_BORROW_HOURS Standard 48` specifies that a license for CA ERwin DM Standard Edition can be borrowed for a maximum period of 48 hours.

**Default:** Two weeks (The default period is specified in the license file.)

Verify that the new period is less than the period specified in the license. If multiple `MAX_BORROW_HOURS` keywords appear for the same *license\_name*, only the last one is applied.

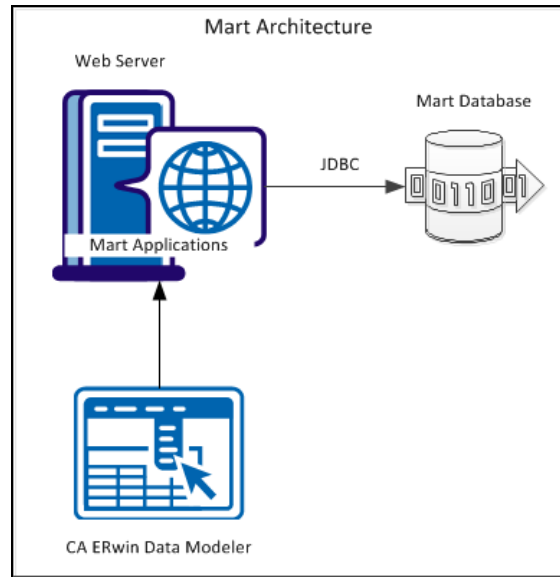
4. Save the file.
5. Open CA ERwin License Administrator and click Administration.
6. Enter the administrator user name and password and click Submit.
7. Click Vendor Daemon Configuration, Administer.

The Vendor Daemon Actions web page appears.

8. Click Stop.  
The Vendor Daemon is stopped.
9. Click Start.  
The Vendor Daemon is restarted and the changes you have made to the options file come into effect.

## Mart Architecture

In the previous versions, CA ERwin Data Modeler connected to the Mart server directly. Now, CA ERwin Data Modeler connects to the Mart server through a web server. The following diagram shows the new architecture:



The new architecture has the following benefits:

- Separate logical and physical users: In the previous versions, Mart (or Model Manager) users required database level privileges to access Mart functionality. The Mart database administrators added or deleted users in the Mart database. This approach is changed now. The logical users are separated from physical users, so Mart Administrators can create Mart users without creating the corresponding database users.
- Authentication through Active Directory services: Earlier, if you wanted to provide access to a user group, you added each user individually. Now, because of the new architecture, you can use the Active Directory services and can provide access to the group. Anyone who is part of the group gets access.

- Mart administration outside CA ERwin Data Modeler: In the previous versions, Mart Administrators used CA ERwin Data Modeler for administrative activities such as permissions management. This required non-modelers to know how to use CA ERwin Data Modeler. In the new architecture, the administration component (CA ERwin Web Admin) is built on a separate layer on top of CA ERwin Data Modeler and is hosted on a Web server. Mart Administrators can access CA ERwin Web Admin from any computer and can perform administrative activities through a web console.

## Mart Server Installation

The way you install Mart is changed, because Mart is now built on a three-tier architecture. Mart comprises a DBMS, a web server, and Mart applications. This release includes the CA ERwin MartServer Installation Wizard, which provides the following options:

- ERwin Mart Server: This option installs a web server (Tomcat) and Java Runtime Environment (JRE), and deploys the MartAdmin and MartServer war files to Tomcat. Enter your database details to configure the Mart Server and initialize Mart.
- ERwin Mart Applications: This option deploys the MartAdmin and MartServer war files to an existing web server. Use this option if you want to use a web server of your choice. After the war files are deployed, enter your database details to configure the Mart Server and initialize Mart.

**Note:** The Mart Server log files are available in the following location:

Windows XP: {user.home}/Local Settings/Application Data/CA/ERwin Mart Server/logs/application.log

Windows 7: {user.home}/AppData/Local/CA/ERwin Mart Server/logs/application.log

We recommend that you install the web server and the Mart database either on the same computer or within the same network.

**Note:** For more information about installing and configuring Mart, see the CA ERwin Data Modeler Workgroup Edition Implementation Guide.

## Mart Upgrade Utility

Earlier, when you upgraded to a new version of CA ERwin DM, only the schema was upgraded. To upgrade your models, you opened each model in the new version. This process took much of your time, especially when you had to upgrade large models. From CA ERwin DM Version 9.0, upgrading models is automated through the Mart Upgrade utility. The utility lets you upgrade not just models, but users, profiles, and permissions too. In addition, the utility also lets you upgrade to a different database.

If your source Mart version is release 7.0 through 7.3.12, the upgrade happens in two stages. First, the Mart is upgraded to CA ERwin DM version 8.0 and then it is upgraded to version 9.1. The existing upgrade process is used to upgrade from a lower version to 8.0. After the source Mart is brought up to version 8.0, the new Upgrade Mart utility is used to upgrade to version 9.1. In the new Upgrade Mart utility, you must select the models that you want to upgrade.

**Note:** The Upgrade Mart utility is available only if you install it while installing CA ERwin DM Version 9.1.

The Upgrade Mart utility lets you upgrade models in several ways. You can choose the best way that helps you get started with your work quickly. Upgrade models in one of the following ways:

- Upgrade the top 'n' versions.
- Upgrade only the marked versions.
- Upgrade all marked versions and top 'n' versions.
- Upgrade all the versions of all the models.

Regardless of the option you select, you can start working on a model after the model is upgraded. You do not need to wait until all the models are upgraded.

For more information about how to upgrade, see the Implementation Guide (Workgroup Edition).

## CA ERwin Mart Administrator

The new Mart includes CA ERwin Mart Administrator, a web-based component that lets you administer Mart. You can perform the following tasks using CA ERwin Mart Administrator:

- Add server users, Windows users, or Windows Group users
- Reset password
- Manage profiles
- Manage permissions
- Manage catalog
- Configure Mart settings
- Delete Mart

**Note:** For more information about these features, see the CA ERwin Mart Administrator Online Help.

## Mart Users

From r9 onwards, you can add individual users and Active Directory user groups to Mart. Individual users are categorized as Server users and Windows users, which are based on the way they are authenticated. There are no database users in CA ERwin DM Version 9 Mart.

The descriptions of user types are as follows:

### Server User

Specifies the user that is authenticated by the Mart server. The server user is an application level user and not a database user. A server user provides the user name and password to log on to Mart. For example, Peter is a Business Analyst and reviews data models. Add Peter as a Server user as he accesses Mart only at the time of reviewing data models. Peter provides his user name and password to connect to Mart.

**Note:** Only a Server user can access CA ERwin Mart Administrator. There are no database level users in CA ERwin DM Version 9 Mart.

### Windows User

Specifies the user that is authenticated by the Windows network. A Windows user need not provide the user name and password to log on to Mart. For example, Jane is a Data Modeler who works on Mart. Add Jane as a Windows user, so she accesses Mart using her Windows network credentials. Jane does not provide her user name and password to connect to Mart.

### User Group

Specifies a user group that is part of an Active Directory. Use this option to add an entire group that accesses Mart. For example, you have a user group ABC-Domain\XYZDivision\_AllModelers@MyOrg.com. Add XYZDivision\_AllModelers, so that all users that are part of this group and are authenticated by ABC-Domain, connect to Mart. Users of this group do not have to provide their user name and password when they connect to Mart.

## Change or Retrieve Mart Password from CA ERwin DM

If you are added as a Server user and SMTP settings are configured on Mart, you can change or retrieve a Mart password either from CA ERwin Data Modeler or from CA ERwin Mart Administrator.

If you have not configured an SMTP server for emails, the Mart Administrator can reset the password for Server users in the User Management page. The password is reset to the default password provided in the Settings page. No email is sent automatically.

To change your Mart password from CA ERwin Data Modeler, open CA ERwin Data Modeler, connect to Mart, and click Change Password. The Change Password dialog appears. Provide your current and new password details and click OK.

Follow these steps to retrieve your Mart password from CA ERwin Data Modeler:

1. Click File, Mart, Connect, and click Forgot Password.

**Note:** To use this option, SMTP settings must be configured in the CA ERwin Mart Administrator Settings page.

2. Complete the following fields:

**Server Name**

Defines the name of the web server where you have installed the Mart.

**Port**

Defines the port number to access the web server.

**Use IIS**

Specifies that you want to use the IIS web server to connect to Mart. This check box is enabled only if you have configured IIS.

**Application Name**

Defines the application name of the Mart that you want to connect to.

**User Name**

Defines your user name as registered in the Mart.

**Email Address**

Defines your email address as registered in the Mart.

3. Click Submit.

A new password is generated and sent to your registered email address.

## Work Offline or Detach Models

CA ERwin DM Version 9 lets you save a Mart model offline or detach a model from Mart.

### **Offline**

Saves the model offline to a local directory. You can work on the offline model without connecting to Mart. Every update to the offline model is recorded until you rebind the model to Mart. The permissions you have on Mart apply to the offline model too.

### **Detach**

Copies the model and saves the copy to a local directory. The detached model is not connected to Mart and is considered as a non-Mart model.

## Bind a Mart Model to your Model

Now you can select a Mart model as a template and bind it with your model. When you create a model using the New Model dialog, click Browse Mart. Browse through your Mart catalog and select a model that you want to use as a template.

### **Active Model Template**

From this release onward, you can bind templates to your models anytime and not just at the time of creating models.

## Live Permission Checking in Mart

In the previous versions of CA ERwin DM, when you updated a model in Mart that was created by another user, permissions were checked when you saved the model. Now, permissions are checked when you add, modify, or delete a model object.

The following rules apply:

- If you update a model created by another user, you must have the *Modify* permission on the model, and its individual objects too.
- If you update a model created by another user and have just the Modify permission on the model, you can add new objects.

If you are updating a model created by another user and you do not have the necessary permissions, you have the following options:

- Designate the model as a new model and become the owner of the new model.
- Modify the model and flag it for the Mart Administrator's approval. If you select this option, you can continue with modifying the model. When you save the model, a request is sent to the Mart Administrator to save the changes.
- Cancel modifying the model.

## Manage Sessions

In the new release of CA ERwin DM, you can manage your sessions either from CA ERwin DM version 9 or from CA ERwin Mart Administrator. You can manage your sessions from the Session Manager panel in CA ERwin DM. If you are a Mart Administrator, use CA ERwin Mart Administrator to manage sessions of Mart users.

The Session Manager panel lets you perform the following tasks:

- View sessions
- Delete sessions
- View sessions that saved the models offline
- Delete sessions that saved the models offline

**Note:** You can delete only your sessions in CA ERwin Data Modeler. If you have the necessary permissions in CA ERwin Mart Administrator, you can delete the sessions of other users in CA ERwin Mart Administrator.

A session starts when you connect to the Mart Application Server. A user can have multiple sessions. This means that a user can connect to multiple instances of CA ERwin DM, using the same user account. A session can have the following statuses:

**Active**

Indicates that the user is actively working with the session.

**Inactive**

Indicates that the Server Session was terminated due to inactivity or connection loss. This status is displayed only in CA ERwin DM. It is not displayed in CA ERwin Mart Administrator.

**Disconnect**

Indicates that the user has saved a model offline in this session. This status is displayed only in CA ERwin Mart Administrator.

**Note:** Terminating a session removes only session locks and not the locks applied by the user in that session. The lock owner has to unlock each catalog entry from Catalog Manager in CA ERwin DM or CA ERwin Mart Administrator.

## Manage Catalogs

In CA ERwin DM version 9 and CA ERwin Mart Administrator, the way of managing Libraries and Versions is redesigned. The new CA ERwin DM introduces Catalog Manager that manages libraries, data models, templates, and versions. Catalog Manager includes Library Manager and Version Manager.

You can perform the following tasks in Catalog Manager and Catalog Management:

- Manage libraries, data models, templates, versions
- Lock and unlock catalog entries
- Create Marked versions
- Hide and unhide versions
- Compare versions

## Redesigned Naming Standards Tool

The way you create and apply naming standards has been redesigned. In the previous versions of CA ERwin DM, you accessed Naming Standards Editor without opening CA ERwin DM. Naming Standards Editor, which is renamed as NSM Option Editor, is now an ERwin object and is accessed from the Model Explorer. Now you must open CA ERwin DM to open NSM Option Editor. NSM Option Editor looks similar to database property editors.

You can create multiple NSM Option objects and select one object to attach with a model. You can attach an NSM Option object to a model template. This helps you apply naming standards to all models at the enterprise level with a single click. You can import the naming standards from a previous version of CA ERwin DM into NSM Option Editor using the editor itself.

### To access NSM Option Editor:

1. Expand the Model Explorer, right-click NSM Options and select New.  
A new NSM Option object appears.
2. Right-click the new object and select Properties.  
NSM Option Editor appears.

## Redesigned Data Type Standards

The way you create and apply data type standards has been redesigned in CA ERwin DM version 9. In the previous versions of CA ERwin DM, you accessed Datatype Standards Editor without opening CA ERwin DM. In version 9, Datatype Standards Editor, which is renamed as DSM Option Editor, is designed as an ERwin object and is accessed from the Model Explorer. Now you must open CA ERwin DM to open DSM Option Editor. DSM Option Editor looks similar to database property editors.

You can create multiple DSM Option objects but you can select only one object to attach to a model. You can attach a DSM Option object to a model template. A model template helps you apply data type standards to all models at the enterprise level with a click. You can import the data type standards from a previous version of CA ERwin DM into DSM Option Editor using the editor itself.

### To access DSM Option Editor:

1. Expand the Model Explorer, right-click DSM Options and select New.  
A new DSM Option object appears.
2. Right-click the new object and select Properties.  
DSM Option Editor appears.

## Meta Integration Bridges Updated

The MIR XMI format export and import bridges are removed. CA ERwin Data Modeler has been updated to support Meta Integration® Model Bridge (MIMB) version 7.0.4 from Meta Integration® Technology, Inc. You can access the bridges when you click Import, From External Format or Export, To External Format on the File menu.

The full list of supported import and export bridges is documented in Appendix B of the CA ERwin Data Modeler Implementation Guide. This guide is available on the ERwin Bookshelf, which is accessible from the Start menu.

### Import Bridges Added/Removed

Support has been added for the following MIMB import bridges:

- CA ERwin v9 (beta bridge)
- Informatica PowerCenter 9.5
- Oracle Data Integration 11g (beta bridge)
- Talend Data Integration v4.x (beta bridge)
- SAP Master Data Management (MDM) v7.1 (beta bridge)

### Export Bridges Added/Removed

Support has been added for the following MIMB export bridges:

- CA ERwin v9 (beta bridge)
- Composite Studio (beta bridge)
- Informatica PowerCenter 9.5
- Oracle Data Integration 11g (beta bridge)
- Talend Data Integration v4.x (beta bridge)
- SAP Master Data Management (MDM) v7.1 (beta bridge)

The full list of supported import and export bridges is documented in Appendix B of the Implementation Guide. This guide is available on the ERwin Bookshelf, which is accessible from the Windows Start menu.



# Chapter 3: System Information

---

Review the following system information before installing and using the product.

This section contains the following topics:

[Release Numbering Scheme in CA ERwin Data Modeler](#) (see page 31)

[Operating System Support](#) (see page 32)

[System Requirements](#) (see page 32)

[Administrative Privileges Required](#) (see page 34)

[Current User Installation](#) (see page 34)

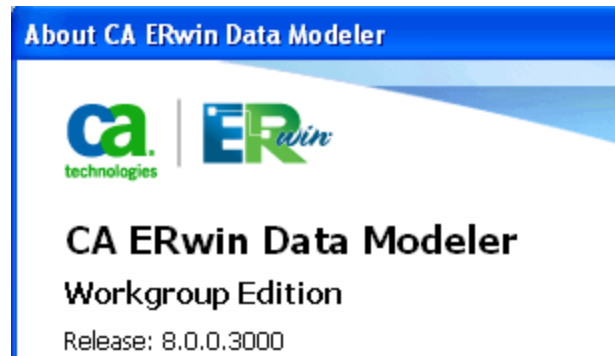
[Supported Target Server Databases](#) (see page 35)

[CA ERwin Data Modeler Workgroup Edition Requirements](#) (see page 35)

[CA ERwin Data Modeler Navigator Edition Requirements](#) (see page 37)

## Release Numbering Scheme in CA ERwin Data Modeler

Effective with r8, the release of this product is displayed in the *About CA ERwin Data Modeler* dialog using the following release numbering scheme:



The first number always indicates the main (GA) release, the second number indicates the service pack number of the main release, the third number indicates the patch number of the main release or service pack (or both), and the fourth number indicates the build number of the product. For example, the preceding illustration indicates that the product level is r8, Build 3000. A release of 8.1.2.1500 in this dialog would indicate r8 Service Pack 1, Patch Release 2, Build 1500.

If any documentation is updated after a main release, the cover page of the documentation always includes an edition number to indicate the release for which it was updated (see [Release Numbers](#) (see page 53) for more information).

## Operating System Support

CA ERwin Data Modeler requires that you have the 32-bit version of one of the following operating systems installed:

- Microsoft Windows Vista
- Microsoft Windows 2008 Server SP2
- Microsoft Windows 2003 Server SP2
- Microsoft Windows XP SP3
- Microsoft Windows 7

**Notes:**

- CA ERwin Data Modeler has only been certified on the 32-bit versions of the Windows operating systems described in the preceding list. CA ERwin Data Modeler is a 32-bit application. You may experience problems running CA ERwin Data Modeler on a 64-bit operating system.
- CA ERwin Data Modeler is compatible with Microsoft Windows 8 Release Preview. You may experience problems with shortcuts and CA ERwin DM third-party components.

## System Requirements

This section includes the system requirements for the computer on which you plan to install CA ERwin Data Modeler and Mart Server.

The following requirements must be met or exceeded for CA ERwin Data Modeler to install and run correctly:

- Microsoft-based workstation, Intel Dual Core processor or equivalent
- 2 GB available hard drive space
- 2 GB RAM minimum; more is recommended for large models
- DVD-readable device (only if installing from DVD media)

**Note:** The minimum screen resolution supported is 1024 x 768. If your screen resolution is less than the minimum supported, some portions of the screen will not be visible.

The following requirements must be met or exceeded for Mart Server:

Hardware requirements (based on physical hardware performance, not a virtual environment):

- 2 GHZ or higher dual core processor
- 4 GB RAM (8 GB or more for large marts)
- 4 GB of disk space or more as required to support your specific mart

Operating system requirements:

- Microsoft Windows Vista
- Microsoft Windows 2008 Server SP2
- Microsoft Windows 2003 Server SP2
- Microsoft Windows XP SP3
- Microsoft Windows 7

**Notes:**

- CA ERwin Data Modeler has only been certified on the 32-bit versions of the Windows operating systems described in the preceding list. CA ERwin Data Modeler is a 32-bit application. You may experience problems running CA ERwin Data Modeler on a 64-bit operating system.
- CA ERwin Data Modeler is compatible with Microsoft Windows 8 Release Preview. You may experience problems with shortcuts and CA ERwin DM third-party components.

Database:

The Mart Server can use a “standalone” or share an existing database server:

- Microsoft SQL Server 2000, 2005, 2008, or 2012
- Oracle 10g or 11g
- Sybase 15.x

The CA ERwin Mart Administrator web client meets the following requirements:

- Supported browsers:
  - Microsoft Internet Explorer 8<sup>®</sup> or newer
  - Mozilla Firefox<sup>®</sup> v.9.0 or newer
  - Google Chrome 14 or newer
  - Apple Safari 5 or newer
- Adobe Flash plug-in version 8 or newer for the respective browser

## Administrative Privileges Required

Because the installation process for CA ERwin Data Modeler writes to the registry and system folders, the person installing, upgrading, or removing CA ERwin Data Modeler must have Administrative privileges. If you run an install without Administrative privileges, all files may not be installed or upgraded, and users can encounter problems when running the software.

## Current User Installation

In the CA ERwin Data Modeler release 8.0, when you installed CA ERwin Data Modeler, only the user who installed the software could use it. Beginning with r8.2, the license mechanism is changed to *per machine* instead of *per user*. When you install CA ERwin Data Modeler, anyone using the computer can use it. In addition, if a valid license is available, multiple users can use CA ERwin Data Modeler simultaneously on a computer.

Because of this change, the license files are now available in the following locations:

### Windows XP

C:\Documents and Settings\All Users\Application Data\CA\ERwin Data Modeler\

### Windows 7

C:\ProgramData\CA\ERwin Data Modeler\

## Supported Target Server Databases

The following target server databases are supported in CA ERwin Data Modeler r8.2:

- DB2 for i (5.x/6.x)
- DB2/LUW (9.1, 9.5, 9.7)
- DB2/zOS (8.1, 9.1)
- Informix (9.x/10.x/11.x)
- MySQL (5.x/6.x)
- ODBC/Generic (2.0, 3.0)
- Oracle (10x/11x)
- Progress (9.x/10.x)
- SAS (stabilized support)
- SQL Azure (using the SQL Azure Extension)
- SQL Server (2000, 2005, 2008)
- Sybase (12.5/15)
- Sybase IQ (12.x)
- Teradata (2.6, 12, 13)

## CA ERwin Data Modeler Workgroup Edition Requirements

If you plan to use CA ERwin Data Modeler Workgroup Edition, review the following requirements to ensure your workgroup environment is set up properly.

### Administrator Server System Requirements

The disk space required for the administrative files used to create and manage the database is separate from the disk space required to accommodate models on the server where the database is located. Greater CPU speed, and more RAM and disk space result in better performance.

## DBMS Requirements

Before you install CA ERwin Data Modeler to use in a workgroup environment, ensure that you are using a supported DBMS as your host server. This release supports the following host DBMSs:

- Oracle 10g and 11g
- Microsoft SQL Server 2000, 2005, 2008, and 2012
- Sybase 15.x

To create, update, or delete a mart in CA ERwin Data Modeler Workgroup Edition, you must have the following database rights:

- For Microsoft SQL Server 2000, 2005, 2008, and 2012 you must be the database owner (dbo).

**Notes:**

- The dbo is no longer required to have the sysadmin role.
- The SQL Server 2005, 2008, and 2012 TRUSTWORTHY database property is no longer required for the mart. After you install this product, you can optionally reset this property to OFF.
- For Oracle, you must be the database schema owner and have the DBA role.

Before you install Mart on the server, verify that the DBMS environment is prepared for the installation, and that the server system requirements meet at least the minimum specifications. At least one user with administrative privileges is available on the DBMS.

**Note:** The dbo role for Microsoft SQL Server or Sybase is necessary only during the installation or upgrade. You can strip the installer of the dbo role after the installation or upgrade is complete.

For more information about preparing the DBMS environment, see the CA ERwin Data Modeler Workgroup Edition *Implementation Guide*.

## Client Workstation Requirements

You must install CA ERwin Data Modeler on each client workstation that needs to access models in the mart, and each client workstation must have access to the DBMS on which the mart is located. It is recommended that client workstations have at least 2 GB of RAM.

You can install CA ERwin Data Modeler Navigator Edition as a client for CA ERwin Data Modeler Workgroup Edition.

**Note:** In a workgroup environment, CA ERwin Data Modeler users can only connect to a mart initialized with the same serial number identifier that the user has licensed on their local machine.

## CA ERwin Data Modeler Navigator Edition Requirements

If you plan to use CA ERwin Data Modeler Navigator Edition, review the following requirements to ensure your environment is set up properly.

### Support for CA ERwin Data Modeler Workgroup Edition

CA ERwin Data Modeler Navigator Edition is enabled for use with a mart-enabled version of CA ERwin Data Modeler (Workgroup Edition). Consult with your mart administrator for a GUEST user permission to access models in CA ERwin Data Modeler Workgroup Edition.

You must use a supported DBMS. This release supports the following host DBMSs:

- Oracle 10g and 11g
- Microsoft SQL Server 2000, 2005, 2008, and 2012
- Sybase 15.x



# Chapter 4: Installation Considerations for CA ERwin Data Modeler Workgroup Edition

---

Review the following installation considerations before installing the product. For more information about the installation process for a workgroup environment, see the CA ERwin Data Modeler Workgroup Edition *Implementation Guide*.

This section contains the following topics:

[Microsoft SQL Server 2005 Permissions](#) (see page 39)

[Specify Use of Foreign Characters With Microsoft SQL Server 2005](#) (see page 40)

[Specify Use of Foreign Characters With Microsoft SQL Server 2000](#) (see page 40)

## Microsoft SQL Server 2005 Permissions

For SQL Server 2000, you only need to have *public* assigned to save to the mart. However, when the repository is on a SQL Server 2005 instance, you need to have the *bulkadmin* permission designated as well. The ability to do bulk inserts (which was permitted by public, previously) is no longer part of the public permission. You must explicitly define this permission or when you attempt to save a model to a new mart instance created using a SQL Server 2005 database, an error "You do not have permission to use the bulk load statement." is returned.

## Specify Use of Foreign Characters With Microsoft SQL Server 2005

For Microsoft SQL Server 2005 and 2008, modify your registry settings to have certain foreign language characters in your models recognized.

**Follow these steps:**

1. Click Run on the Start menu.
2. Enter *regedit*.

The Registry Editor opens.

3. Verify or add the following registry entry:

[HKEY\_LOCAL\_MACHINE\SOFTWARE\Microsoft\MSSQLServer\Client\DB-Lib]

"AutoAnsiToOem"="ON"

"UseIntlSettings"="ON"

4. Click File, Exit.

Your configuration is set to recognize foreign language characters in your models.

## Specify Use of Foreign Characters With Microsoft SQL Server 2000

For Microsoft SQL Server 2000, select specific settings in the Client Network Utility to have certain foreign language characters in your models recognized.

**Follow these steps:**

1. Click Programs, Microsoft SQL Server, Client Network Utility on the Start menu.

The SQL Server Client Network Utility dialog opens.

2. Select the following check boxes on the DB-Library Options tab:

- Automatic ANSI to OEM conversion
- Use international settings

3. Click OK.

Your configuration is set to recognize foreign language characters in your models.

# Chapter 5: Installation Considerations for CA ERwin Data Modeler Navigator Edition

---

Review the following installation considerations before installing the product. See the CA ERwin Data Modeler Navigator Edition *User Guide* for more information about the installation process.

## Silent Install

This product does not provide an unattended or silent install.



# Chapter 6: General Considerations for Using CA ERwin Data Modeler Workgroup Edition

---

The following sections contain general information you should know before using CA ERwin Data Modeler in a workgroup environment.

This section contains the following topics:

[Model Conversion and Complete Compare Differences](#) (see page 43)

[Model Display in the Difference Reconciliation Dialog](#) (see page 43)

[Uninstalling CA ERwin Data Modeler Workgroup Edition](#) (see page 43)

## Model Conversion and Complete Compare Differences

Unlike previous conversions to new releases, starting with r8, it is no longer valid to do a round-trip through another version of the product and use Complete Compare to compare the differences between the models. Due to the new changes and features in r8, the models will be different; use reports to detect and work with model differences.

## Model Display in the Difference Reconciliation Dialog

In a workgroup modeling environment, two users may check out and make changes to the same model. The first user may make changes to the model and save the changes to the mart. When the second modeler makes changes and saves them to the mart, the Difference Reconciliation dialog is displayed. You use features in this dialog to view the differences on the object level, the more detailed property level, or search the text of the comparison lists.

**Note:** In the Difference Reconciliation dialog, the model in the left pane is the current model that you are checking in to the mart. The model in the right pane is the version of the model already in the mart.

## Uninstalling CA ERwin Data Modeler Workgroup Edition

You can use the Windows uninstall utility to uninstall CA ERwin Data Modeler. However, when you uninstall CA ERwin Data Modeler in a workgroup environment, the mart database remains intact. To remove the database from your computer, delete the mart database first, and then uninstall CA ERwin Data Modeler.



# Chapter 7: General Considerations for Using CA ERwin Data Modeler Navigator Edition

---

The following sections contain general information you should know before using CA ERwin Data Modeler Navigator Edition.

## Model Display in the Difference Reconciliation Dialog

In a workgroup modeling environment, two users may check out and make changes to the same model. The first user may make changes to the model and save the changes to the mart. When the second modeler makes changes and saves them to the mart, the Difference Reconciliation dialog is displayed. You use features in this dialog to view the differences on the object level, the more detailed property level, or search the text of the comparison lists.

**Note:** In the Difference Reconciliation dialog, the model in the left pane is the current model that you are checking in to the mart. The model in the right pane is the version of the model already in the mart.

## Help Files

The context sensitive online help in CA ERwin Data Modeler Navigator Edition is identical to the online help in CA ERwin Data Modeler. This means that the online help may discuss capabilities such as saving a model that is not possible in the CA ERwin Data Modeler Navigator Edition product.



# Chapter 8: Known Issues

---

This section contains the known issues that you should review before using the application.

This section contains the following topics:

[SQL 1105 Error](#) (see page 47)

[Model and Version Name Limit on Oracle](#) (see page 47)

[Editing UDP Values in the Bulk Editor](#) (see page 48)

[CA ERwin Data Modeler and Crystal Reports Shell Installation](#) (see page 48)

[Silent Installation](#) (see page 48)

[Upgrading CA ERwin Data Modeler on Windows Server 2003](#) (see page 49)

[Mart Reports Work with Crystal Reports Developer Edition](#) (see page 49)

[Error Failed to Get Latest Version from Mart](#) (see page 49)

[Model Versions do not Open in the Same Instance](#) (see page 49)

## SQL 1105 Error

When you are upgrading to CA ERwin Data Modeler version 9.0 or 9.1 on Microsoft SQL Server in a workgroup environment, during the mart conversion process, you may get the message "Sql 1105" if you run out of free hard disk space during the process.

Stop the conversion process, and either free or add hard disk space. You should delete the already created r9 tables and then re-attempt the conversion.

## Model and Version Name Limit on Oracle

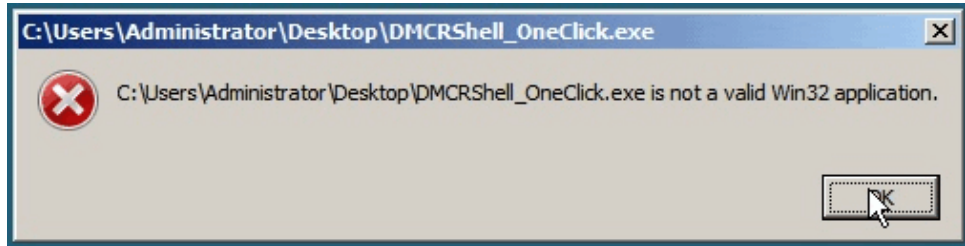
In a workgroup environment, when you save a model to an Oracle mart, the model name must be less than 130 characters. If you exceed the 130 character limit, the model will not save. Because the version name is derived from the model name (for example, <ModelName>:<version number> by <UserName> on <VersionCreateDate>), you should use model names considerably less than 130 characters in length to avoid problems with saving a model version.

## Editing UDP Values in the Bulk Editor

You can only edit the UDP values of UDPs that use either the *String* or *Number* data type in the Bulk Editor. Bulk editing of UDP values that use either the *Date* or *List* data type is not currently supported. Editing of UDP values for UDPs that use *Date* or *List* is only supported using the *User Defined Properties - Logical* or *User Defined Properties - Physical* dialogs. These dialogs are accessed by selecting User Defined Properties from the Model menu.

## CA ERwin Data Modeler and Crystal Reports Shell Installation

If the operating system of the machine on which you want to install CA ERwin Data Modeler version 9.0 or 9.1 and Crystal Reports is either Microsoft Windows Server 2008 or Microsoft Windows Server 2008 SP1, you may encounter the following error:



If you receive this error, the installation will not continue. You can perform one of the following to resolve this problem:

- Upgrade to Microsoft Windows Server 2008 SP2.
- Install CA ERwin Data Modeler version 9.0 or 9.1 and Crystal Reports Shell separately by downloading each application's individual installation program.
- Install CA ERwin Data Modeler version 9.0 or 9.1 and then run the Crystal Reports installation from the install wizard.

## Silent Installation

CA ERwin Data Modeler version 9.0 and 9.1 require .NET 3.5 to be installed on your system. If you do not have it installed, the CA ERwin Data Modeler installation will attempt to install it. In this case, we advise against using a silent install.

## Upgrading CA ERwin Data Modeler on Windows Server 2003

While upgrading CA ERwin Data Modeler on the Windows Server 2003 platform, you may receive a digital signature policy error. This error occurs when you install version 9.0 or 9.1 of the application. This is an operating system error that can be resolved by applying the update for Windows Server 2003 ([KB925336](#)) from Microsoft.

## Mart Reports Work with Crystal Reports Developer Edition

You can generate Mart reports only if you have installed Crystal Reports Developer Edition on the computer from which you want to generate the reports.

## Error Failed to Get Latest Version from Mart

The message, Error, Failed to get latest version from mart appears in the following scenarios:

- When two versions of a Mart model are compared and objects are imported or exported from the higher version to the lower version model, the higher version saves properly. When the lower version model is saved, the message, "Error, Failed to get latest version from mart" appears.
- If two versions of a Mart model are opened in the same instance of CA ERwin DM, changes are imported from the higher to the lower version, and Save or Incremental Save is clicked, the message, "Error, Failed to get latest version from mart" appears.

## Model Versions do not Open in the Same Instance

Suppose that two versions of a Mart model are opened in the same instance of CA ERwin DM and the changes are imported from one version to another. Whether the models are saved and closed or closed without saving, if the same model is opened again, it does not open. However, other models open properly.



# Chapter 9: Documentation

---

This section contains information about current product documentation.

This section contains the following topics:

[Documentation Formats and Deliverables](#) (see page 51)

[Technical Documentation Series](#) (see page 53)

[Release Numbers](#) (see page 53)

## Documentation Formats and Deliverables

The following changes have been made to CA ERwin Data Modeler Version 9.0 documentation:

- Due to change in the design of Naming Standards and Data Type Standards, the following online help systems are now part of the CA ERwin Data Modeler online help:
  - Datatype Standards Online Help
  - Naming Standards Online Help

### Deliverables Included

- The Bookshelf provided with CA ERwin Data Modeler, which is installed by default, includes documentation for CA ERwin Data Modeler Navigator Edition. You can open the Bookshelf in a web browser from the CA ERwin Data Modeler Start menu. The documentation provided on the Bookshelf includes:

Deliverable Name	Format Provided
Add-In Manager Online Help	HTML
Administration Guide (Workgroup Edition)	HTML and PDF
API Reference Guide	HTML and PDF
Data Modeling Overview Guide (This guide was earlier known as Methods Guide.)	HTML and PDF
Editing Forward Engineering Templates	HTML and PDF
Implementation Guide	HTML and PDF
Implementation Guide (Workgroup Edition)	HTML and PDF
Installation Guide	HTML and PDF
Metamodel Reference	HTML

<b>Deliverable Name</b>	<b>Format Provided</b>
CA ERwin Data Modeler Online Help	HTML
CA ERwin Mart Administrator Online Help	HTML
Release Notes	HTML and PDF
Template Language and Macro Reference	PDF
Upgrade Wizard Help	HTML
User Guide (Navigator Edition)	HTML and PDF

**Note:** For more information about the CA ERwin Data Modeler editions, see [CA ERwin Data Modeler Editions](#) (see page 9).

The bookshelf includes a new section named Roles. This section includes documentation relevant to the tasks performed by each role in HTML format. The Roles section includes the following documentation:

<b>Role</b>	<b>Deliverable Name</b>
Business Analyst	Applying a theme to a model
Business Analyst	Changing the description of multiple objects
Data Architect	Creating a report on the model metadata
Data Architect	Applying data type standards
Data Architect	Applying naming standards
Data Architect	Creating a model
System Administrator	Upgrading Mart
System Administrator	Setting up concurrent licenses
System Administrator	Using a local license
System Administrator	Using concurrent licenses
System Administrator	Adding users
System Administrator	Installing and configuring Mart

## Technical Documentation Series

The Template Language and Macro Reference (*Template Lang and Macro Ref.PDF*) technical document is provided on the Bookshelf and can also be accessed from the Tech Docs menu item on the CA ERwin Data Modeler Start menu.

The CA ERwin Data Modeler metamodel reference and overview technical documents are provided on the CA ERwin Data Modeler Metamodel Reference Bookshelf. This Bookshelf is accessible from the Tech Docs menu item on the CA ERwin Data Modeler Start menu. It contains an overview of the metamodel (*ERwin Metamodel Overview.PDF*) and the metamodel object and property descriptions are provided in HTML format (*Metamodel Reference*).

To view PDF files, you must download and install the Adobe Reader from the Adobe website if it is not already installed on your computer.

## Release Numbers

The release number on the title page of a document might not correspond to the current product release number; however, all documentation delivered with the product, regardless of release number on the title page, will support your use of the current product release. The release number changes only when a significant portion of a document changes to support a new or updated product release. For example, a document for r8 may still be valid for r8.1. Documentation bookshelves always reflect the current product release number.

Occasionally, we must update documentation outside of a new or updated release. To indicate a minor change to the documentation that does not invalidate it for any releases that it supports, we update the edition number on the cover page. First editions do not have an edition number.



# Appendix A: Appendix

---

This section contains the following topics:

[Third Party Software Acknowledgment](#) (see page 57)



# Appendix B: Third Party Software Acknowledgment

---

The following license agreements are available in the \Bookshelf Files\TPSA folder in the CA Bookshelf:

- Boost Software License ([../TPSA/Boost.txt](#))
- Flexera FLEXNet Publisher ([../TPSA/Flexera.txt](#))
- springsource ldap 1.3.1 ([../TPSA/Apache License.txt](#))
- Commons Collections 3.2.1 ([../TPSA/Apache License.txt](#))
- Commons Logging 1.1.1 ([../TPSA/Apache License.txt](#))
- Commons Lang 2.5 ([../TPSA/Apache License.txt](#))
- Commons Pool 1.5.5 ([../TPSA/Apache License.txt](#))
- Commons IO 2.0.1 ([../TPSA/Apache License.txt](#))
- Commons DBCP 1.4 ([../TPSA/Apache License.txt](#))
- Log4j 1.2.16 ([../TPSA/Apache License.txt](#))
- Google-gson 1.7.1 ([../TPSA/Apache License.txt](#))
- Spring Security 3.0.7 ([../TPSA/Apache License.txt](#))
- Spring Framework 3.0.6 ([../TPSA/Apache License.txt](#))
- Commons FileUpload 1.2.2 ([../TPSA/Apache License.txt](#))
- Open CSV 1.8 ([../TPSA/Apache License.txt](#))
- Oracle 11G JDBC driver 11.1.0.6 ([../TPSA/O11G JDBC Driver.txt](#))
- Tomcat 7.0.19 ([../TPSA/Tomcat\\_7019.txt](#))
- Oracle (Sun) JRE 6 Update 24

JRE 1.6: This Product is distributed with JRE v.1.6. Oracle has provided additional copyright notices and information that may be applicable to portions of the JRE in the THIRDPARTYLICENSEREADME.txt file that accompanies the JRE files.

- Meta Integration Bridges

CA ERwin Data Modeler's metadata import/export capabilities are powered by Meta Integration® Model Bridge (MIMB), copyright 1997-2006.

Meta Integration is a registered trademark of Meta Integration Technologies, Inc. in the United States.