

CA ERwin[®] Data Modeler

Release Notes

Service Pack 8.2.3



This Documentation, which includes embedded help systems and electronically distributed materials, (hereinafter referred to as the "Documentation") is for your informational purposes only and is subject to change or withdrawal by CA at any time.

This Documentation may not be copied, transferred, reproduced, disclosed, modified or duplicated, in whole or in part, without the prior written consent of CA. This Documentation is confidential and proprietary information of CA and may not be disclosed by you or used for any purpose other than as may be permitted in (i) a separate agreement between you and CA governing your use of the CA software to which the Documentation relates; or (ii) a separate confidentiality agreement between you and CA.

Notwithstanding the foregoing, if you are a licensed user of the software product(s) addressed in the Documentation, you may print or otherwise make available a reasonable number of copies of the Documentation for internal use by you and your employees in connection with that software, provided that all CA copyright notices and legends are affixed to each reproduced copy.

The right to print or otherwise make available copies of the Documentation is limited to the period during which the applicable license for such software remains in full force and effect. Should the license terminate for any reason, it is your responsibility to certify in writing to CA that all copies and partial copies of the Documentation have been returned to CA or destroyed.

TO THE EXTENT PERMITTED BY APPLICABLE LAW, CA PROVIDES THIS DOCUMENTATION "AS IS" WITHOUT WARRANTY OF ANY KIND, INCLUDING WITHOUT LIMITATION, ANY IMPLIED WARRANTIES OF MERCHANTABILITY, FITNESS FOR A PARTICULAR PURPOSE, OR NONINFRINGEMENT. IN NO EVENT WILL CA BE LIABLE TO YOU OR ANY THIRD PARTY FOR ANY LOSS OR DAMAGE, DIRECT OR INDIRECT, FROM THE USE OF THIS DOCUMENTATION, INCLUDING WITHOUT LIMITATION, LOST PROFITS, LOST INVESTMENT, BUSINESS INTERRUPTION, GOODWILL, OR LOST DATA, EVEN IF CA IS EXPRESSLY ADVISED IN ADVANCE OF THE POSSIBILITY OF SUCH LOSS OR DAMAGE.

The use of any software product referenced in the Documentation is governed by the applicable license agreement and such license agreement is not modified in any way by the terms of this notice.

The manufacturer of this Documentation is CA.

Provided with "Restricted Rights." Use, duplication or disclosure by the United States Government is subject to the restrictions set forth in FAR Sections 12.212, 52.227-14, and 52.227-19(c)(1) - (2) and DFARS Section 252.227-7014(b)(3), as applicable, or their successors.

Copyright © 2012 CA. All rights reserved. All trademarks, trade names, service marks, and logos referenced herein belong to their respective companies.

Contact CA Technologies

Understanding your Support

Review [support maintenance programs and offerings](#).

Registering for Support

Access the CA Support [online registration site](#) to register for product support.

Accessing Technical Support

For your convenience, CA Technologies provides easy access to "One Stop" support for all editions of [CA ERwin Data Modeler](#), and includes the following:

- Online and telephone contact information for technical assistance and customer services
- Information about user communities and forums
- Product and documentation downloads
- CA Support policies and guidelines
- Other helpful resources appropriate for your product

For information about other Home Office, Small Business, and Enterprise CA Technologies products, visit <http://ca.com/support>.

Provide Feedback

If you have comments or questions about CA Technologies product documentation, you can send a message to techpubs@ca.com.

If you would like to provide feedback about CA Technologies product documentation, complete our short [customer survey](#), which is also available on the CA Support website, found at <http://ca.com/docs>.

CA ERwin Data Modeler News and Events

Visit www.erwin.com to get up-to-date news, announcements, and events. View video demos and read up on customer success stories and articles by industry experts.

Documentation Changes

Welcome to CA ERwin Data Modeler r8.2 (r8 Service Pack 2). The following documentation updates have been made since the last release (r8.1) of this documentation:

- [CA ERwin Data Modeler Editions](#) (see page 15)—This chapter describes the new edition, [CA ERwin Data Modeler for Microsoft SQL Azure](#) (see page 15) that is enabled by the addition of SQL Azure support.
- [New Features and Enhancements](#) (see page 17)—This chapter describes the new features, enhancements, and changes implemented for r8.2.
- [Supported Target Server Databases](#) (see page 27)—SQL Azure (using the SQL Azure extension) has been added to the list of target databases supported by CA ERwin Data Modeler.
- [Documentation Formats and Deliverables](#) (see page 53)—Updated to include the addition of the Installation Guide.

Contents

Chapter 1: CA ERwin Data Modeler Editions 9

Community Edition.....	10
Standard Edition.....	12
Workgroup Edition.....	13
Navigator Edition.....	14
CA ERwin Data Modeler for Microsoft SQL Azure.....	15

Chapter 2: New Features and Enhancements 17

Licensing Enhancements	17
Database Support Update.....	18
Databases Added	18
Connecting to SQL Azure.....	19
SQL Azure Database Permissions	19
Publishing CA ERwin Data Modeler Models to a Web Portal.....	19
Model Templates	20
Metadata Integration Bridges Updated	21
Import Bridges Added/Removed	21
Import Bridges Renamed	22
Export Bridges Added/Removed.....	22
Export Bridges Renamed.....	22
Enhancements for Diagrams	22

Chapter 3: System Information 23

Upgrading CA ERwin Data Modeler from r7.x to r8.x	24
Release Numbering Scheme in CA ERwin Data Modeler	25
Operating System Support	25
System Requirements	26
Administrative Privileges Required	26
Current User Installation	26
Supported Target Server Databases.....	27
CA ERwin Data Modeler Workgroup Edition Requirements	27
Administrator Server System Requirements.....	28
DBMS Requirements	29
Client Workstation Requirements.....	30
CA ERwin Data Modeler Navigator Edition Requirements.....	30
Support for CA ERwin Data Modeler Workgroup Edition	30

Chapter 4: Installation Considerations for CA ERwin Data Modeler Workgroup Edition	31
Microsoft SQL Server 2005 Permissions.....	31
Specify Use of Foreign Characters With Microsoft SQL Server 2005	32
Specify Use of Foreign Characters With Microsoft SQL Server 2000	32
Client Version Checking.....	33
Chapter 5: Installation Considerations for CA ERwin Data Modeler Navigator Edition	35
Silent Install.....	35
Client Version Checking.....	35
Chapter 6: General Considerations for Using CA ERwin Data Modeler Workgroup Edition	37
Conversion Information	37
Conversion Preparation Recommendations	37
Conversion of Custom Security Profiles	38
Conversion Notes for Oracle, Microsoft SQL Server, and Sybase	38
r8 Model Conversion and Complete Compare Differences	38
Model Display in the Difference Reconciliation Dialog	39
Uninstalling CA ERwin Data Modeler Workgroup Edition.....	39
Chapter 7: General Considerations for Using CA ERwin Data Modeler Navigator Edition	41
Model Display in the Difference Reconciliation Dialog	41
Help Files.....	41
Chapter 8: Known Issues	43
SQL 1105 Error	43
Model and Version Name Limit on Oracle	43
Editing UDP Values in the Bulk Editor	44
Reverse-Engineer from Database.....	44
Models of Previous Versions Do Not Open Through CA ERwin Data Modeler r8 API.....	44
CA ERwin Data Modeler r8 and Crystal Reports Shell Installation	45
CA ERwin Data Modeler r8 Silent Installation	45
Upgrading CA ERwin Data Modeler on Windows Server 2003	45
Administrative Privileges Required for Export, Import and Query Tool Options	46

Chapter 9: Fixed Issues

47

Issues Fixed in this Release47

Chapter 10: Documentation

53

Documentation Formats and Deliverables.....53

Technical Documentation Series.....54

Release Numbers55

Chapter 1: CA ERwin Data Modeler Editions

The following editions of CA ERwin Data Modeler are available:

[Community Edition](#) (see page 10)

[Standard Edition](#) (see page 12)

[Workgroup Edition](#) (see page 13)

[Navigator Edition](#) (see page 14)

[CA ERwin Data Modeler for Microsoft SQL Azure](#) (see page 15)

This *Release Notes* details new features, enhancements, updates, and known issues for all editions of CA ERwin Data Modeler.

Note: Depending on the edition of CA ERwin Data Modeler you are using, not all features may be enabled for use. For more information about the differences between versions, click one of the Edition links.

Community Edition

The Community Edition of CA ERwin Data Modeler includes a limited number of features from the main product, and is designed to help Data Architects learn data modeling techniques, create simple data models, and learn about the design and maintenance of a production database.

Most of the basic features of CA ERwin Data Modeler are available, with limited access to the following features:

25 Entities/Tables Per Model

You can reverse-engineer, import using Metadata Integration (MITI) bridges, or create up to 25 entities/tables per model. There is no restriction on the number of views you can create.

If you attempt to reverse engineer a script or database with more than 25 tables, or attempt to open a model with more than 25 tables, a warning message displays, reminding you of the object creation limitation in the Community Edition. For Oracle and SQL Server, the reverse engineer process stops after creating 25 tables in the new model. For other databases, a warning message displays, stating that the import feature is disabled.

Note: Some operations that include the creation of temporary tables may also result in exceeding the allowed table limit. For example, if you reverse engineer a DB2/LUW script that contains 25 tables and a materialized view, the temporary table used to create the materialized view will cause you to exceed the allowed table limit for the model.

Read-Only Complete Compare

You can use Complete Compare features to evaluate and compare models, but you cannot commit changes you make in the Complete Compare wizard to the models you compare. The "Finish" button is disabled in the Resolve Differences dialog. In addition, demand loading of databases and Alter Script generation are not supported.

Note: If you are working with a database as part of the compare process, only the first 25 tables are reverse engineered to the model used during the compare. This may result in problems in the Complete Compare Resolve Differences dialog, where objects and properties between the models will not match. To avoid problems, work with a database that has fewer than 25 tables.

Save As

You can save your models in the native *.erwin format or as a template (*.erwin_tmpl). Save As XML, ER1, and ERT is not supported.

File Open

You can open a model in *.erwin or *.erwin_tmpl format, and a SQL DDL file in the format *.sql, *.ers, or *.ddl.

Print a Model

Support for printing models is included in the Community Edition, although the output includes a watermark.

Working with Transformations in the Community Edition

You can work with transformations in the Community Edition to implement design decisions, such as partitioning tables. However, because of the limitation to 25 entities/tables per model, some transformation operations may not be possible. For example, if you are near the limit of 25 tables and choose to partition a table, you may surpass the table limit, and the transformation operation will not complete.

The Advisories Pane on the main workplace window reports a message reminding you that the intended action did not complete because of the object creation limit.

Limited Database Support

Support is included for modeling using the following databases:

- Oracle (10.x/11.x)
- SQL Server (2005/2008)
- DB2 LUW (9.1, 9.5, and 9.7)
- MySQL (5.x, using ODBC)
- ODBC (2.0, 3.0)
- Sybase (12.5/15)

Limited Access to Metadata Integration (MITI) Bridges

Support is limited to the following Metadata Integration (MITI) Bridges for import. Export using Metadata Integration (MITI) Bridges is not supported.

- Sybase PowerDesigner OOM 9.x to 15.x (using UML XMI)
- Sybase PowerDesigner CDM 6.x
- Sybase PowerDesigner CDM 7.5 to 15.x
- Sybase PowerDesigner PDM 6.1.x
- Sybase PowerDesigner 7.5 to 15.x
- Embarcadero ER/Studio
- Embarcadero ER/Studio (using DM1)
- OMG/CWM 1.x XMI 1.x
- OMG/UML 1.x XMI 1.x

Note: If the file you import has more than 25 tables, the Community Edition imports only the first 25 tables.

Other limitations of the Community Edition include the following:

- A copy of Crystal Reports 2008 is not included with the Community Edition.
- Features supporting the creation and implementation of data type standards are not enabled.
- Access to the CA ERwin Data Modeler Workgroup Edition is disabled. When working with Complete Compare, the option to compare your model with a model in a mart is disabled.
- The Community Edition license is valid for one year. After one year you can reinstall the Community Edition with a new license, or purchase and install a full version of the product. You can install and use the Community Edition without entering a license key for 30 days from the date you installed the product.

Note: If you attempt to access a disabled feature in the Community Edition, a pop-up message appears to remind you the feature is not available.

Documentation

The Community Edition includes online help files and PDF guides available on the ERwin Bookshelf, which is accessible from the Start menu.

To view PDF files, you must download and install the Adobe Reader from the Adobe website if it is not already installed on your computer.

Standard Edition

CA ERwin Data Modeler Standard Edition provides all the data modeling features used by Data Architects, Data Administrators, and Application Administrators, but does not include any workgroup modeling capabilities. You can use this edition as a standalone modeling tool, and as a Workgroup Edition client that can access and work with data models stored in a mart. When you enable data movement or dimensional modeling features, it provides a tool for assisting Data Administrators and Capacity Managers design data warehouses. Partners can use the API to create add-on solutions to CA ERwin Data Modeler. With the optional SQL Azure extension, you can take advantage of using SQL Azure as a target database.

Workgroup Edition

CA ERwin Data Modeler Workgroup Edition provides all the data modeling features used by Data Architects and also includes workgroup modeling capabilities used by Database Administrators, Application Administrators, and Application Owners. It provides conflict resolution, versioning, security and standardization for multi-user modeling. Workgroup modeling operates in a client/server environment so processing is shared between the user client workstation and the server where the models are stored. Users access the stored models through a client, such as CA ERwin Data Modeler. Models are held in a platform and network independent database or mart that resides on a central server, using Microsoft SQL Server, Oracle, or Sybase as the host database. With the optional SQL Azure extension, you can take advantage of using SQL Azure as a target database.

The key features of CA ERwin Data Modeler Workgroup Edition include:

Model change impact analysis

Provides a change summary showing the impact of changes and the history of the affected model objects, allowing you to select which changes to apply to the model repository.

Version management

Lets Data Architects store, access and analyze the history of a model and the changes made to it, lock down specific versions, run difference reports between versions, and seamlessly roll back models to previous states as required.

Concurrent model access with optional model locking

Allows multiple users to concurrently work on a given model without compromising the integration and integrity of their parallel efforts.

Sub-modeling support

Provides a focused view that helps individual modelers reduce the system resources required to upload and download during model check-in and check-out.

The administrator installs the program and initializes the database on the DBMS server. The administrator also has the responsibility of setting up the library structure in which models are organized, and assigning security profiles to users. Administration overhead is relatively low and proportional to the number and activity level of the users. After a model is saved to the database, control of who can work on the model and how changes are saved to the model is handled by security, making it possible for workgroups to work on large models without confusion. CA ERwin Data Modeler Workgroup Edition supports many security and administrative features related to its multiuser capabilities and the client/server environment in which it operates. For this reason, routine management is usually performed by a dedicated administrator. Administrators can find detailed information regarding their tasks and responsibilities in the CA ERwin Data Modeler Workgroup Edition *Administration Guide*.

You can also use CA ERwin Data Modeler Navigator Edition as a client. Read-only access is permitted to data models, so your workgroup can use this client to share information with others without the risk that unauthorized changes might be saved to the mart.

Additionally, you can connect to the mart through the Naming Standards Editor or the Datatype Standards Editor.

Navigator Edition

CA ERwin Data Modeler Navigator Edition provides a cost-effective way to provide read-only access to models built with CA ERwin Data Modeler for viewing and analysis. This edition does not permit you to make any changes to models.

The key features of CA ERwin Data Modeler Navigator Edition include:

Read-only access

Read-only access is provided to models created by CA ERwin Data Modeler and it can also be used as a Workgroup Edition client for viewing a data model stored in a mart. Use the Navigator Edition to easily share model information without the risk of unauthorized changes to a model.

Navigation and Viewing

Provides those who need to view models, but not update them, full navigation and viewing of data models.

Reporting and Publication

Offers reporting and printing capabilities that generate in a variety of formats, including HTML and PDF.

CA ERwin Data Modeler for Microsoft SQL Azure

If you plan to use SQL Azure as your target server with CA ERwin Data Modeler, verify that your SQL Azure license is present either on the computer on which you plan to run CA ERwin Data Modeler, or on the License Server. This means, if you are using a local CA ERwin DM license, then you must have the license for SQL Azure locally. If you are using a License Server to get the CA ERwin DM license, then you must have the license for SQL Azure on the License Server. If you do not have a SQL Azure license, you cannot select SQL Azure as a target server. This requirement is effective for all editions of CA ERwin Data Modeler, including Community Edition.

The following tables compare the differences in CA ERwin Data Modeler functionality depending on whether you are using the SQL Azure extension:

Community Edition with SQL Azure Extension
Limited database support, however SQL Azure is available as a target server for new models and deriving models
SQL Azure models can be opened directly
Opening a file in XML format is supported
Alter Script in Forward Engineering is enabled only for SQL Azure models
No entity/table volume limitation for SQL Azure models only Notes:
<ul style="list-style-type: none"> ■ You can reverse engineer from any of the supported target server databases, but when the reverse engineer process finishes, switch to one of the available CE target server databases (DB2 for LUW, MySQL, ODBC/Generic, Oracle, SQL Azure, SQL Server, or Sybase). ■ If you attempt to reverse engineer more than 25 entities/tables, verify that your target server is SQL Azure. If it is not, then only the first 25 entities/tables are converted and the rest are removed.
On-demand loading and model saving during Complete Compare is enabled only for SQL Azure models
Printing a SQL Azure model is supported and the output does not contain a watermark
Data type standards are supported
Only SQL Azure models can be saved in any of the available formats
Access to marts (workgroup modeling) is not supported
Full use of all available MITI import and export bridges
Crystal Reports is supported

Standard Edition	Standard Edition with SQL Azure Extension
SQL Azure is not available as a target server for new models and deriving models	SQL Azure is available as a target server for new models and deriving models
Opening a SQL Azure model launches a dialog prompting you to select a different target server	SQL Azure models can be opened directly
SQL Azure is not an option in the CA ERwin Data Modeler Target Server dialog	SQL Azure is available for selection in the CA ERwin Data Modeler Target Server dialog

Workgroup Edition	Workgroup Edition with SQL Azure Extension
SQL Azure is not available as a target server for new models and deriving models	SQL Azure is available as a target server for new models and deriving models
Opening a SQL Azure model launches a dialog prompting you to select a different target server	SQL Azure models can be opened directly
SQL Azure is not an option in the CA ERwin Data Modeler Target Server dialog	SQL Azure is available for selection in the CA ERwin Data Modeler Target Server dialog
Mart access is disabled for SQL Azure models	Mart access is enabled for SQL Azure models

Chapter 2: New Features and Enhancements

This section of the Release Notes for CA ERwin Data Modeler documents new features and enhancements for r8.2.

This section contains the following topics:

[Licensing Enhancements](#) (see page 17)

[Database Support Update](#) (see page 18)

[Publishing CA ERwin Data Modeler Models to a Web Portal](#) (see page 19)

[Model Templates](#) (see page 20)

[Metadata Integration Bridges Updated](#) (see page 21)

[Enhancements for Diagrams](#) (see page 22)

Licensing Enhancements

The CA ERwin Data Modeler licensing functionality has been enhanced to include the following types of licenses:

Local license

Is stored on your local computer. This license lets you use CA ERwin Data Modeler only from your computer.

Concurrent license

Locks to your License Server. With this license, you can access CA ERwin Data Modeler from any computer that is in the same network. This license is checked out from the License Server.

You can have Local and Concurrent licenses for CA ERwin Data Modeler Standard and Workgroup Editions.

A local license is ideal when a single user uses CA ERwin Data Modeler and a concurrent license is ideal when multiple users in a network domain use the product.

If you are using the concurrent licensing model, the licenses are stored on a License Server. You can install the License Server when you install CA ERwin Data Modeler. For more information about how to install the License Server, see the *Installation Guide*.

Database Support Update

Databases Added

Support has been added for the following target server database in CA ERwin Data Modeler r8.2:

- SQL Azure

Notes:

- If you plan to use SQL Azure as your target server, verify that your SQL Azure license is present on the computer on which you plan to run CA ERwin Data Modeler. If it is not present, you are unable to select SQL Azure as a target server.
- Review [Connecting to SQL Azure](#) (see page 19) for specific connection information.

SQL Azure support is included for the following functional areas in CA ERwin Data Modeler:

- Model creation
- Reverse engineering
- Derive model
- Forward-engineering

Note: The principal *Application Role* is not supported in SQL Azure. Any property editor that provides a way to set permissions on an object will not have Application Role available for selection in the list of Principals to Grant.

Support is provided for the following objects:

- Databases
- Database Roles
- Domains
- Default Values
- Functions
- Indexes
- Logins
- Schemas
- Spatial Indexes
- Stored Procedures
- Synonyms

- Tables
- Triggers
- User IDs
- Validation Rules
- Views

Connecting to SQL Azure

Consider the following if your target server is SQL Azure:

- To connect to the SQL Azure database using the logins you create, you must first grant each login database-level permissions using the *CREATE USER* command.
- Because some tools implement tabular data stream (TDS) differently, you may need to append the SQL Azure server name to the login in the connection string using the *<login>@<server>* notation. In this case, separate the login and the SQL Azure server name with the *at (@)* symbol. For example, if your login is named *login1* and the fully-qualified name of your SQL Azure server is *servername.database.windows.net*, the username parameter of your connection string should be: *login1@servername*. This restriction places limitations on the text you can choose for the login name.

SQL Azure Database Permissions

The SQL Azure Permission Editor can be used to define permissions for a database in a SQL Azure physical model.

Publishing CA ERwin Data Modeler Models to a Web Portal

You can now publish your model to the CA ERwin Web Portal, using the Web Portal, Publish menu option. You must have the CA ERwin Web Portal details and you must start the service before you publish.

Note: You can also export a model to MIR-XMI format using the File, Export, To External Formats menu option.

Model Templates

New model templates were added to CA ERwin Data Modeler to facilitate easier and consistent creation and maintenance of data models. In addition to the model template files used in previous releases (*.erwin_tmpl), which can still be used, r8.2 model template files use the *.erwin extension.

Note: You can use either *.erwin_tmpl or *.erwin extensions as a template for creating models. However, to achieve synchronization of model objects between a model template and a data model, you bind the model template to the model. You can only use the *.erwin extension for template binding.

Binding a model template to a data model copies the non-built-in objects from the template model to the target model. When you bind a model template, the predefined model objects populate your model, eliminating the need to enter objects manually or depend on reverse engineering. Binding of model templates can occur at any time necessary, including during model creation, or after the model is created.

Creating a model template lets you create objects according to company or department standards so that object names are consistent across all data models. Any changes made to the model template are reflected in the models that use it.

Model template functionality includes:

Bind, unbind and rebind model template

To use a model template for a model, you bind the model template to the model. At any time you can unbind, or remove, the model template. Whenever you open a model with a bound model template, confirm whether to synchronize any model template changes with the objects used in the model.

Detection of model template changes

Whenever you open a model with a bound model template, confirm whether to synchronize any model template changes with the objects used in the model. You can also refresh your model with any model template changes at any time using the *Refresh Template* option.

Filtering of template objects

Filters the object display in the Model Template dialog. Filtering the objects to create a shorter list makes it easier for you to define the model objects that you want in your template.

Importing new template objects

When you change a model template, or want to include objects in a model template you previously did not include, refresh the model template.

Synchronization of model objects

Any changes you make to a model template are synchronized with the models that use the template in the Model Template Synchronization Wizard. You can select the *Synchronize on Model Load* option so that when a model is opened, you can review model template changes.

Template removal

You can delete model templates. Any objects brought in to a model by the template can remain in the model, or you can remove them when the template is unbound. If you keep the objects, any changes made to the objects are performed directly in the model because the template no longer exists.

Reporting

Use the Query Tool to report on model template objects.

Metadata Integration Bridges Updated

CA ERwin Data Modeler has been updated to support Meta Integration® Model Bridge (MIMB) version 7.0.2 from Meta Integration® Technology, Inc. You can access the bridges when you click Import, From External Format or Export, To External Format on the File menu.

The full list of supported import and export bridges is documented in Appendix B of the *CA ERwin Data Modeler Implementation Guide*. This guide is available on the ERwin Bookshelf, which is accessible from the Start menu.

Import Bridges Added/Removed

Support has been added for the following MIMB import bridges:

- Oracle Data Integrator (ODI) 11g (new Java API based architecture)
- Oracle Warehouse Builder (OWB) 11.2 (new API architecture for 11.2 different from 11.1)
- SAP Master Data Management (MDM) v7.1 (beta, not supported)
- SAP Business Information Warehouse (BW) (beta, not supported)

Import Bridges Renamed

The following import bridges are renamed:

- SAP NetWeaver Business Warehouse (BW) is changed to SAP NetWeaver Business Warehouse (BW) - Beta bridge
- SAP NetWeaver Master Data Management (MDM) - Beta bridge is changed to SAP NetWeaver Business Warehouse (BW)
- Grandite Silverrun-RDM 2.4.4 to 2.8.5 is changed to Grandite Silverrun-RDM 2.4.4 to 2.8.6

Export Bridges Added/Removed

Support has been added for the following MIMB export bridges:

- Oracle Warehouse Builder (OWB) 11.2 (new API architecture for 11.2 different from 11.1)
- SAP Master Data Management (MDM) 7.1 (beta, not supported)

Export Bridges Renamed

The following export bridge is renamed:

SAP NetWeaver Master Data Management (MDM) - Beta bridge is changed to SAP NetWeaver Business Warehouse (BW)

Enhancements for Diagrams

The following enhancements have been made to diagrams:

- You can browse through a diagram horizontally or vertically by holding the middle button of the mouse.
- You can zoom in or zoom out a diagram by holding the Ctrl key and using the mouse wheel (Ctrl + scroll).

Chapter 3: System Information

Review the following system information before installing and using the product.

This section contains the following topics:

[Upgrading CA ERwin Data Modeler from r7.x to r8.x](#) (see page 24)

[Release Numbering Scheme in CA ERwin Data Modeler](#) (see page 25)

[Operating System Support](#) (see page 25)

[System Requirements](#) (see page 26)

[Administrative Privileges Required](#) (see page 26)

[Current User Installation](#) (see page 26)

[Supported Target Server Databases](#) (see page 27)

[CA ERwin Data Modeler Workgroup Edition Requirements](#) (see page 27)

[CA ERwin Data Modeler Navigator Edition Requirements](#) (see page 30)

Upgrading CA ERwin Data Modeler from r7.x to r8.x

Models

You can upgrade any model from r7.x to r8.x.

During the r8.x upgrade process for CA ERwin Data Modeler Workgroup Edition, a dialog opens if you have any models that are stored in a r7.x mart that are Version 4.x. This dialog contains a list of all the Version 4.x models and presents you with the following options for each model:

- Delete the Version 4.x model and continue with the mart upgrade.
- Cancel the mart upgrade. Doing so lets you go back to CA ERwin Data Modeler r7.x, convert the models from Version 4.x to r7.x, and save to the mart. After you have saved these models to your mart you can continue with the r7.x to r8.x upgrade.

Printer settings and paper size considerations

If you use a paper size other than Letter, before you upgrade any r7.x models to r8.x, ensure your paper size specifications are set in the Printer Properties dialog and saved with the model. Otherwise, you must reset your paper size in the Page Setup Editor in r8.x.

Deleting subject areas during the upgrade process

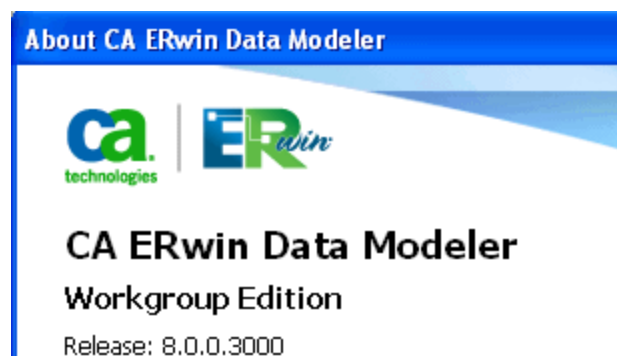
The r8.x upgrade process includes the option to delete the Main Subject Area. When the upgrade process completes, the model opens in r8.x. If this model contains other subject areas that you want to delete, then for better model performance we recommend that you first save the open model and close it. Reopen the model and then delete any subject areas that you want to remove.

Diagram layout

Due to the changes in the diagram layout technology, the conversion of models from r7.x to r8.x may not preserve the exact layout used in r7.x.

Release Numbering Scheme in CA ERwin Data Modeler

Effective with r8, the release of this product is displayed in the *About CA ERwin Data Modeler* dialog using the following release numbering scheme:



The first number always indicates the main (GA) release, the second number indicates the service pack number of the main release, the third number indicates the patch number of the main release or service pack (or both), and the fourth number indicates the build number of the product. For example, the preceding illustration indicates that the product level is r8, Build 3000. A release of 8.1.2.1500 in this dialog would indicate r8 Service Pack 1, Patch Release 2, Build 1500.

If any documentation is updated after a main release, the cover page of the documentation always includes an edition number to indicate the release for which it was updated (see [Release Numbers](#) (see page 55) for more information).

Operating System Support

CA ERwin Data Modeler requires that you have the 32-bit version of one of the following operating systems installed:

- Microsoft Windows Vista
- Microsoft Windows 2008 Server
- Microsoft Windows 2003 Server
- Microsoft Windows XP (through SP3)
- Microsoft Windows 7

Note: CA ERwin Data Modeler has only been certified on the 32-bit versions of the Windows operating systems described in the preceding list. CA ERwin Data Modeler is a 32-bit application. You may experience problems running CA ERwin Data Modeler on a 64-bit operating system.

System Requirements

The following requirements must be met or exceeded for CA ERwin Data Modeler to install and run correctly:

- Microsoft-based workstation, Intel Pentium 4 or equivalent
- 2 GB available hard drive space
- 2 GB RAM minimum; more is recommended for large models
- DVD-readable device (only if installing from DVD media)

Note: The minimum screen resolution supported is 1024 x 768. If your screen resolution is less than the minimum supported, some portions of the screen will not be visible.

Administrative Privileges Required

Because the installation process for CA ERwin Data Modeler writes to the registry and system folders, the person installing, upgrading, or removing CA ERwin Data Modeler must have Administrative privileges. If you run an install without Administrative privileges, all files may not be installed or upgraded, and users can encounter problems when running the software.

Current User Installation

In the CA ERwin Data Modeler release 8.0, when you installed CA ERwin Data Modeler, only the user who installed the software could use it. Beginning with r8.2, the license mechanism is changed to *per machine* instead of *per user*. When you install CA ERwin Data Modeler, anyone using the computer can use it. In addition, if a valid license is available, multiple users can use CA ERwin Data Modeler simultaneously on a computer.

Because of this change, the license files are now available in the following locations:

Windows XP

C:\Documents and Settings\All Users\Application Data\CA\ERwin Data Modeler\

Windows 7

C:\ProgramData\CA\ERwin Data Modeler\

Supported Target Server Databases

The following target server databases are supported in CA ERwin Data Modeler r8.2:

- DB2 for i (5.x/6.x)
- DB2/LUW (9.1, 9.5, 9.7)
- DB2/zOS (8.1, 9.1)
- Informix (9.x/10.x/11.x)
- MySQL (5.x/6.x)
- ODBC/Generic (2.0, 3.0)
- Oracle (10x/11x)
- Progress (9.x/10.x)
- SAS (stabilized support)
- SQL Azure (using the SQL Azure Extension)
- SQL Server (2000, 2005, 2008)
- Sybase (12.5/15)
- Sybase IQ (12.x)
- Teradata (2.6, 12, 13)

CA ERwin Data Modeler Workgroup Edition Requirements

If you plan to use CA ERwin Data Modeler Workgroup Edition, review the following requirements to ensure your workgroup environment is set up properly.

Administrator Server System Requirements

Verify that the machine where the software (the administrator's workstation or file server for administrative files) is installed meets the minimum requirements summarized below. The disk space required for the administrative files used to create and manage the database is separate from the disk space required to accommodate models on the server where the database is located. Greater CPU speed, and more RAM and disk space result in better performance.

Important! In addition to being licensed for the Workgroup Edition, the administrator's workstation must also contain the Initializer license in order to perform administrative tasks on the mart.

Note: While not recommended, the software can be installed on the same machine as the database server.

- Intel Pentium 4 or equivalent supported by the Host DBMS
- 2 GB disk space
- 2 GB RAM (more recommended for large models)
- DVD-readable device (only if installing from DVD media)

DBMS Requirements

Before you install CA ERwin Data Modeler r8.2 to use in a workgroup environment, ensure you are using a supported DBMS as your host server. r8.2 supports the following host DBMSs:

- Oracle 10g/11g
- SQL Server 2000/2005/2008
- Sybase 12.x/15

To create, update, or delete a mart in CA ERwin Data Modeler Workgroup Edition, you must have the following database rights:

- For Microsoft SQL Server 2000/2005/2008, you must be the database owner (dbo).

Notes:

- The dbo is no longer required to have the sysadmin role.
- The SQL Server 2005/2008 TRUSTWORTHY database property is no longer required for the mart. After you install this product, you can optionally reset this property to OFF.
- For Oracle, you must be the database schema owner and have the DBA role.

Before you can install the mart on the server, you must verify that the DBMS environment is prepared for the installation, and that the server system requirements meet at least the minimum specifications. The administrator of the DBMS must also set up user permissions for the mart.

Note: The dbo role for Microsoft SQL Server or Sybase is necessary only during the installation or upgrade. You can strip the installer of the dbo role after the installation or upgrade is complete.

For more information about preparing the DBMS environment, see the CA ERwin Data Modeler Workgroup Edition *Implementation Guide*.

Client Workstation Requirements

You must install CA ERwin Data Modeler r8.2 on each client workstation that needs to access models in the mart, and each client workstation must have access to the DBMS on which the mart is located. It is recommended that client workstations have at least 2 GB of RAM.

CA ERwin Data Modeler Workgroup Edition r8.2 also supports the following client products:

- CA ERwin Data Modeler Navigator Edition r8.2
- CA ERwin Data Model Validator r8.2

Note: In a workgroup environment, CA ERwin Data Modeler users can only connect to a mart initialized with the same serial number identifier that the user has licensed on their local machine.

CA ERwin Data Modeler Navigator Edition Requirements

If you plan to use CA ERwin Data Modeler Navigator Edition, review the following requirements to ensure your environment is set up properly.

Support for CA ERwin Data Modeler Workgroup Edition

CA ERwin Data Modeler Navigator Edition r8.2 is enabled for use with a mart-enabled version of CA ERwin Data Modeler (Workgroup Edition). Consult with your mart administrator for a GUEST user permission to access models in CA ERwin Data Modeler Workgroup Edition.

You must use a supported DBMS as your host server. The following host DBMSs are supported by r8.2:

- Oracle 10x/11x
- SQL Server 2000/2005/2008
- Sybase 12.5/15

Chapter 4: Installation Considerations for CA ERwin Data Modeler Workgroup Edition

Review the following installation considerations before installing the product. For more information about the installation process for a workgroup environment, see the CA ERwin Data Modeler Workgroup Edition *Implementation Guide*.

This section contains the following topics:

[Microsoft SQL Server 2005 Permissions](#) (see page 31)

[Specify Use of Foreign Characters With Microsoft SQL Server 2005](#) (see page 32)

[Specify Use of Foreign Characters With Microsoft SQL Server 2000](#) (see page 32)

[Client Version Checking](#) (see page 33)

Microsoft SQL Server 2005 Permissions

For SQL Server 2000, you only need to have *public* assigned to save to the mart. However, when the repository is on a SQL Server 2005 instance, you need to have the *bulkadmin* permission designated as well. The ability to do bulk inserts (which was permitted by public, previously) is no longer part of the public permission. You must explicitly define this permission or when you attempt to save a model to a new mart instance created using a SQL Server 2005 database, an error "You do not have permission to use the bulk load statement." is returned.

Specify Use of Foreign Characters With Microsoft SQL Server 2005

For Microsoft SQL Server 2005/2008, modify your registry settings to have certain foreign language characters in your models recognized.

Follow these steps:

1. Click Run on the Start menu.
2. Enter *regedit*.

The Registry Editor opens.

3. Verify or add the following registry entry:

[HKEY_LOCAL_MACHINE\SOFTWARE\Microsoft\MSSQLServer\Client\DB-Lib]

"AutoAnsiToOem"="ON"

"UseIntlSettings"="ON"

4. Click File, Exit.

Your configuration is set to recognize foreign language characters in your models.

Specify Use of Foreign Characters With Microsoft SQL Server 2000

For Microsoft SQL Server 2000, select specific settings in the Client Network Utility to have certain foreign language characters in your models recognized.

Follow these steps:

1. Click Programs, Microsoft SQL Server, Client Network Utility on the Start menu.

The SQL Server Client Network Utility dialog opens.

2. Select the following check boxes on the DB-Library Options tab:

■ Automatic ANSI to OEM conversion

■ Use international settings

3. Click OK.

Your configuration is set to recognize foreign language characters in your models.

Client Version Checking

When you connect a client such as CA ERwin Data Modeler to a mart database, the software checks to verify that the client version is compatible with the current version of the mart database. Even though there is a version dependency, the service pack version can vary.

Chapter 5: Installation Considerations for CA ERwin Data Modeler Navigator Edition

Review the following installation considerations before installing the product. See the CA ERwin Data Modeler Navigator Edition *User Guide* for more information about the installation process.

Silent Install

This product does not provide an unattended or silent install.

Client Version Checking

When you connect the CA ERwin Data Modeler Navigator Edition client to a mart database, the software checks to verify that the client version is compatible with the current version of the mart database. There is a version dependency, however the Service Pack version can vary.

Chapter 6: General Considerations for Using CA ERwin Data Modeler Workgroup Edition

The following sections contain general information you should know before using CA ERwin Data Modeler in a workgroup environment.

This section contains the following topics:

[Conversion Information](#) (see page 37)

[Conversion Preparation Recommendations](#) (see page 37)

[Conversion of Custom Security Profiles](#) (see page 38)

[Conversion Notes for Oracle, Microsoft SQL Server, and Sybase](#) (see page 38)

[r8 Model Conversion and Complete Compare Differences](#) (see page 38)

[Model Display in the Difference Reconciliation Dialog](#) (see page 39)

[Uninstalling CA ERwin Data Modeler Workgroup Edition](#) (see page 39)

Conversion Information

CA ERwin Data Modeler r8.2 will be installed in new folders on your hard drive, however, both r7.x (CA ERwin Model Manager) and r8.2 can exist on the same machine.

Note: You must be at r7.x or later in order to convert existing models to r8.2. Additionally, before you can use the Submodel Manager to work with models in the mart, you must first upgrade each r7.x model to r8.2. For more information about converting from r7.x to r8.2, see the CA ERwin Data Modeler Workgroup Edition *Implementation Guide*.

Conversion Preparation Recommendations

Before you convert, we recommend the following:

1. Verify that all models to be converted were saved and opened in your current database.
2. Close all open sessions.
3. Delete any unnecessary models. This reduces the conversion time and the amount of space used by the mart database during the conversion.

A complete CA ERwin Data Modeler Workgroup Edition Pre-Conversion checklist is available on the [CA ERwin Data Modeler](#) technical support page. Before attempting to convert your mart, be sure to read this document. If you need assistance during the conversion process, you can open a support issue from the support link.

Conversion of Custom Security Profiles

Enhancements to the CA ERwin Data Modeler r8 metamodel may have an effect on custom security profiles that you created in CA ERwin Model Manager r7.x. If you defined custom security profiles or modified existing ones in the previous release, review your permissions to ensure that your security requirements are met in CA ERwin Data Modeler r8.

Conversion Notes for Oracle, Microsoft SQL Server, and Sybase

Review the following information before you attempt a CA ERwin Data Modeler r7.x to r8 database conversion.

For Oracle r7.x databases:

- Make sure you have at least as many rollback segments as used by your r7.x database. We strongly recommend that you follow the guidelines in the CA ERwin Data Modeler Workgroup Edition *Administration Guide*.
- Before you start a conversion, it is strongly recommended that you shrink rollback segments. The following is a sample SQL statement (for each segment):

```
ALTER ROLLBACK SEGMENT <RBS_NAME> SHRINK;
```

It is safe to randomly shrink rollback segments while the conversion is running, but you must be logged in as the DBA.

For Microsoft SQL Server and Sybase r7.x databases:

- tempdb should be as big as the mart DB size.

r8 Model Conversion and Complete Compare Differences

Unlike previous conversions to new releases, starting with r8, it is no longer valid to do a round-trip through another version of the product and use Complete Compare to compare the differences between the models. Due to the new changes and features in r8, the models will be different; use reports to detect and work with model differences.

Model Display in the Difference Reconciliation Dialog

In a workgroup modeling environment, two users may check out and make changes to the same model. The first user may make changes to the model and save the changes to the mart. When the second modeler makes changes and saves them to the mart, the Difference Reconciliation dialog is displayed. You use features in this dialog to view the differences on the object level, the more detailed property level, or search the text of the comparison lists.

Note: In the Difference Reconciliation dialog, the model in the left pane is the current model that you are checking in to the mart. The model in the right pane is the version of the model already in the mart.

Uninstalling CA ERwin Data Modeler Workgroup Edition

You can use the Windows uninstall utility to uninstall CA ERwin Data Modeler. However, when you uninstall CA ERwin Data Modeler in a workgroup environment, the mart database remains intact. To remove the database from your computer, delete the mart database first, and then uninstall CA ERwin Data Modeler.

Chapter 7: General Considerations for Using CA ERwin Data Modeler Navigator Edition

The following sections contain general information you should know before using CA ERwin Data Modeler Navigator Edition.

Model Display in the Difference Reconciliation Dialog

In a workgroup modeling environment, two users may check out and make changes to the same model. The first user may make changes to the model and save the changes to the mart. When the second modeler makes changes and saves them to the mart, the Difference Reconciliation dialog is displayed. You use features in this dialog to view the differences on the object level, the more detailed property level, or search the text of the comparison lists.

Note: In the Difference Reconciliation dialog, the model in the left pane is the current model that you are checking in to the mart. The model in the right pane is the version of the model already in the mart.

Help Files

The context sensitive online help in CA ERwin Data Modeler Navigator Edition is identical to the online help in CA ERwin Data Modeler. This means that the online help may discuss capabilities such as saving a model that is not possible in the CA ERwin Data Modeler Navigator Edition product.

Chapter 8: Known Issues

This section contains known issues you should review before using CA ERwin Data Modeler r8.

This section contains the following topics:

[SQL 1105 Error](#) (see page 43)

[Model and Version Name Limit on Oracle](#) (see page 43)

[Editing UDP Values in the Bulk Editor](#) (see page 44)

[Reverse-Engineer from Database](#) (see page 44)

[Models of Previous Versions Do Not Open Through CA ERwin Data Modeler r8 API](#) (see page 44)

[CA ERwin Data Modeler r8 and Crystal Reports Shell Installation](#) (see page 45)

[CA ERwin Data Modeler r8 Silent Installation](#) (see page 45)

[Upgrading CA ERwin Data Modeler on Windows Server 2003](#) (see page 45)

[Administrative Privileges Required for Export, Import and Query Tool Options](#) (see page 46)

SQL 1105 Error

When you are upgrading to CA ERwin Data Modeler r8 on Microsoft SQL in a workgroup environment, during the mart conversion process, you may get the message "Sql 1105" if you run out of free hard disk space during the process.

Stop the conversion process, and either free or add hard disk space. You should delete the already created r8 tables and then re-attempt the conversion.

Model and Version Name Limit on Oracle

In a workgroup environment, when you save a model to an Oracle mart, the model name must be less than 130 characters. If you exceed the 130 character limit, the model will not save. Because the version name is derived from the model name (for example, <ModelName>:<version number> by <UserName> on <VersionCreateDate>), you should use model names considerably less than 130 characters in length to avoid problems with saving a model version.

Editing UDP Values in the Bulk Editor

You can only edit the UDP values of UDPs that use either the *String* or *Number* data type in the Bulk Editor. Bulk editing of UDP values that use either the *Date* or *List* data type is not currently supported. Editing of UDP values for UDPs that use *Date* or *List* is only supported using the *User Defined Properties - Logical* or *User Defined Properties - Physical* dialogs. These dialogs are accessed by selecting User Defined Properties from the Model menu.

Reverse-Engineer from Database

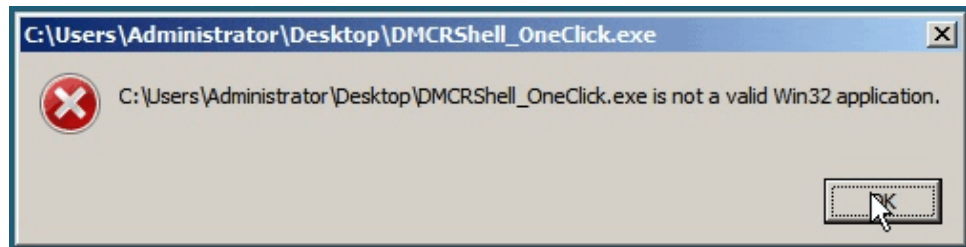
There is a known limitation in CA ERwin Data Modeler r8 when you reverse-engineer from a database and select the *System Objects* option in the Reverse Engineer – Set Options dialog. You may exceed the memory that CA ERwin Data Modeler requires to operate, which can cause the application to end. This is because the database you are attempting to reverse-engineer is too large (it contains very large amount of objects such as tables, columns, and views, and is directly related to the amount of data stored). To avoid this issue, we recommend using only the reverse-engineer options required - any objects that you do not need to reverse-engineer should not be selected for this process, and not selecting the *System Objects* option will help to alleviate this issue.

Models of Previous Versions Do Not Open Through CA ERwin Data Modeler r8 API

There is a known issue in CA ERwin Data Modeler r8. The models that you have created in previous versions of CA ERwin Data Modeler do not open through the CA ERwin Data Modeler r8 API.

CA ERwin Data Modeler r8 and Crystal Reports Shell Installation

If the operating system of the machine on which you want to install CA ERwin Data Modeler r8 and Crystal Reports is either Microsoft Windows Server 2008 or Microsoft Windows Server 2008 SP1, you may encounter the following error:



If you receive this error, the installation will not continue. You can perform one of the following to resolve this problem:

- Upgrade to Microsoft Windows Server 2008 SP2
- Install CA ERwin Data Modeler r8 and Crystal Reports Shell separately by downloading each application's individual installation program
- Install CA ERwin Data Modeler r8 and then run the Crystal Reports installation from the CA ERwin Data Modeler r8 DVD

CA ERwin Data Modeler r8 Silent Installation

CA ERwin Data Modeler r8 requires .NET 3.5 to be installed on your system. If you do not have it installed, the CA ERwin Data Modeler installation will attempt to install it. In this case, we advise against using a silent install.

Upgrading CA ERwin Data Modeler on Windows Server 2003

While upgrading CA ERwin Data Modeler on the Windows Server 2003 platform, you may receive a digital signature policy error during the r8.1 installation. This is an operating system error that can be resolved by applying the update for Windows Server 2003 ([KB925336](#)) from Microsoft.

Administrative Privileges Required for Export, Import and Query Tool Options

If you log on to the computer on which you are running CA ERwin DM as a user that does not have administrator privileges, the following options may not work properly:

- Export or import objects using MITI bridges (File, Export or Import menu option).
- ODBC connection—ODBC connection to erwin fails. This functionality affects Query Tool and Crystal Reports.

The workaround is that you must log in using an account that has administrator privileges to use the Export, Import, and Query Tool options, and Crystal Reports.

Chapter 9: Fixed Issues

This section includes the list of issues that is fixed.

This section contains the following topics:

[Issues Fixed in this Release](#) (see page 47)

Issues Fixed in this Release

The following issues are fixed in this release:

Problem No.: 11718, Issue No.: 20789047

When a model was opened in CA ERwin DM Release 8.2, the application crashed with an error.

Problem No.: 11632, Issue No.: 20584214

If a value for Cache was specified in the Oracle Sequence Editor, the model was forward-engineered and then validated, CA ERwin DM crashed.

Problem No.: 11696, Issue No.: 20687096

For a Sybase 12.5/12 model, syntax was missing in Forward Engineer SQL Syntax for the columns for which Generated Identity was selected.

Problem No.: 11576, Issue No.: 20524219

When CA ERwin DM was installed on on Windows Vista 32-bit, Windows 7 32-bit, or Windows XP, the Query Tool consumed 50% of a 2-core CPU machine or 100% on a 1-core machine when started up, without being connected to an ODBC source and without running a query. The high CPU usage continued event after connecting to the ODBC source.

Problem No.: 11601, Issue No.: 20818779

When a DB2/zOS was reverse-engineered, it produced a physical model where occurrences of the system default for columns were missing. The resulting DDL did not contain WITH DEFAULT.

Problem No.: 11765, Issue No.: 20820434

When a CA ERwin DM Release 8 model with DB2 9.7 LUW as target database was compared using Complete Compare with a reverse-engineered DB2 9.7 LUW model that included the default settings for Type Selection, the application crashed.

Problem No.: 11769, Issue No.: 20820781

When a model with DB2/LUW 9.x as the target database was reverse-engineered, the column default was lost. The value *with default* was replaced with ". The DDL generated was incorrect because of this.

Problem No.: 11591, Issue No.: 20894374

Model versions in the Model Manager could not be saved as offline models.

Problem No.: 11752, Issue No.: 20797269

When the target database was SQL Server 2005 or 2008, the Options field in the Index Properties Editor did not have the "---" or Default value. Consequently, if "True" or "False" was selected, there was no way to set it back to default.

Problem No.: 11832, Issue No.: 20843316

When a CA ERwin DM Release 7.3.x model was opened in CA ERwin DM Release 8.2.1, the application started hanging. After the post-load upgrade process, the error, *An unexpected and serious condition occurred in the application. Please contact technical Support with replicating steps to resolve this issue* was displayed. CA ERwin DM had to be shutdown using Task Manager.

Problem No.: 11784, Issue No.: 20851338, 20846672

Users could not harden names in CA ERwin DM Release 8.2. In some scenarios, if the macro part in either Table or Column editor is changed, the Inheritance icon changes to Override and does not change back to Inherit.

The conditions under which this happens are:

- Both NSM and Macro are used in Naming options
- Special characters are selected to REPLACE with '_' Underscore.

Problem No.: 11649, Issue No.: 20623372

To add a relationship between two entities, in CA ERwin DM Release 7.x users could select the parent table involved in the relationship and then use the Go To dialog to find the child table and complete the relationship. However, in CA ERwin DM Release 8.x, when the parent table was selected to start the relationship and the Go To dialog was used, it reset the current tool and selected the object which that was just selected and users could not complete the relationship.

Problem No.: 11745, Issue No.: 20277048, 20686064

When a DB2 z/OS V9 database was forward-engineered, index creation and referential integrity did not work properly.

Problem No.: 11528, Issue No.: 20797954

Although partitions are allowed on Unique Primary Index IF the partitioning column is a member of the UPI, the following error message was displayed:

Set Property: Teradata_Partitioning_Expression

Object type identifier = 1075838985

Object id = 151

Property type identifier = 1075850794

ESX-190817: Partition Expression is only valid on a non-unique primary index.

Problem No.: 11360, Issue No.: 20323976

In a non-identifying relationship, the attribute FK Null or Not Null did not change in the model view when changing the Null Option (Nulls Not Allowed or No Nulls). Different values were shown for the Null Option in the Attribute editor and the model view.

Problem No.: 11615, Issue No.: 20577865

When a DB2 UDB script was reverse-engineered, it produced a duplicate index name of the primary key and showed it as an alternate key.

Problem No.: 11472, Issue No.: 20768328

When a model that was created using CA ERwin DM Release 8.0 was opened in CA ERwin DM Release 8.1, CA ERwin DM crashed after the post-upload process finished. The model could not be opened in CA ERwin DM Release 8.0, Release 8.1, or Release 8.2.

Problem No.: 11213, Issue No.: 20625940

When a model that was created using CA ERwin DM Release 7.3.2 was opened in CA ERwin DM Release 8.1, the message, Out of memory was displayed. Upon clicking OK on this message, CA ERwin DM was closed. This model could not be converted to CA ERwin DM Release 8.1.

Problem No.: 11702, Issue No.: 20698748

When a model that was created using CA ERwin DM Release 7.x was opened in CA ERwin DM Release 8.x, the physical storage and DBSPACE in Release 7.x and IN_DBSPACE in Release 8.x that were created for indexes and tables were lost. The target database was Informix 11.x.

Problem No.: 11838, Issue No.: 20600120

When a model was forward-engineered in CA ERwin DM Release 8.0, the partition column for table displayed the logical name instead of the physical name.

Problem No.: 11667, Issue No.: 20633340

Users could not add unique constraints to a column that had a recursive relationship.

Problem No.: 11750, Issue No.: 20797462

When a model was upgraded to CA ERwin DM Release 8.2, the model displayed extra relationships with subtype relationships in diagrams. If the extra relationships were moved or deleted, the subtype relationship disappeared. This happened when the model was saved as XML and opened in CA ERwin DM Release 8.2.

Problem No.: 11008, Issue No.: 19488635

When a CA ERwin Data Modeler (CA ERwin DM) Release 7.3.10 model was compared with an IBM UDB database or against a DDL and Views were exported to the right model, CA ERwin DM did not export the columns of the Views.

Problem No.: 11603, Issue No.: 20556620

The %SubjectAreaProp macro does not work with CA ERwin DM Release 8.

Problem No.: 11504, Issue No.: 20728300-2

If a certain type of column exceeded 255 characters, reports from the ODBC Query tool were truncated at 255 characters.

Problem No.: 11756, Issue No.: 20805500

When a data type was changed from Integer to CHAR(20) in CA ERwin DM Release 8.2, an invalid Alter statement was generated.

Problem No.: 11841, Issue No.: 20821027

In a DB2 LUW model, if a logical data type was Boolean and it was attached to a default domain Number, the physical data type was converted from Samllint to Boolean. This happened when the model was converted from CA ERwin DM Release 7.3.11 to Release 8.2. Boolean is an invalid data type in DB2 LUW.

Problem No.: 11799, Issue No.: 20867819

If the Foreign Key column was set to Null in a DB2 MVS/zOS version 8.1 or 9.1 script and it was reverse-engineered, the result showed the column as Not Null.

Problem No.: 10975, Issue No.: 19424691-2

When a model was reverse-engineered from a DB2 ISeries script that included both constraints and indexes, CA ERwin DM created two indexes with the same name, one for the constraint and another for the index, instead of unifying it as one index.

Issue No.: 20785184-1

When a model created using CA ERwin DM Release 7.3.8 was opened in CA ERwin DM Release 8.2.01, the application crashed.

Chapter 10: Documentation

This section contains information about current product documentation.

This section contains the following topics:

[Documentation Formats and Deliverables](#) (see page 53)

[Technical Documentation Series](#) (see page 54)

[Release Numbers](#) (see page 55)

Documentation Formats and Deliverables

The following changes have been made to CA ERwin Data Modeler documentation:

- In the earlier versions of CA ERwin Data Modeler (pre-r8), installing documentation was optional. Now, when you install CA ERwin Data Modeler, documentation is installed by default.
- The following online help systems are now available only through the CA ERwin Data Modeler bookshelf:
 - Add-in Manager Online Help
 - Datatype Standards Online Help
 - ERwin Online Help
 - Naming Standards Online Help

Note: In r8, these online help systems were available in the bookshelf and in the `\CA\ERwin Data Modeler r8\Doc` folder.

Deliverables Included

- The Bookshelf provided with CA ERwin Data Modeler, which is installed by default, includes documentation for CA ERwin Data Modeler Navigator Edition and CA ERwin Data Model Validator. You can open the Bookshelf in a web browser from the CA ERwin Data Modeler Start menu. The documentation provided on the Bookshelf includes:

Deliverable Name	Format Provided
Add-In Manager Online Help	HTML
Administration Guide (Workgroup Edition)	HTML and PDF
API Reference Guide	HTML and PDF
Datatype Standards Online Help	HTML

Deliverable Name	Format Provided
Editing Forward Engineering Templates	HTML and PDF
Implementation Guide	HTML and PDF
Implementation Guide (Data Model Validator)	HTML and PDF
Implementation Guide (Workgroup Edition)	HTML and PDF
Installation Guide	HTML and PDF
Metamodel Reference	HTML
Methods Guide	HTML and PDF
Naming Standards Online Help	HTML
ODBC Reporting Guide	HTML and PDF
CA ERwin Data Modeler Online Help	HTML
Release Notes	HTML and PDF
Release Notes (Data Model Validator)	HTML and PDF
Template Language and Macro Reference	PDF
User Guide (Navigator Edition)	HTML and PDF

Note: For more information about the CA ERwin Data Modeler editions, see [CA ERwin Data Modeler Editions](#) (see page 9).

Technical Documentation Series

The Template Language and Macro Reference (*Template Lang and Macro Ref.PDF*) technical document is provided on the Bookshelf and can also be accessed from the Tech Docs menu item on the CA ERwin Data Modeler Start menu.

The CA ERwin Data Modeler metamodel reference and overview technical documents are provided on the CA ERwin Data Modeler Metamodel Reference Bookshelf. This Bookshelf is accessible from the Tech Docs menu item on the CA ERwin Data Modeler Start menu. It contains an overview of the metamodel (*ERwin Metamodel Overview.PDF*) and the metamodel object and property descriptions are provided in HTML format (*Metamodel Reference*).

To view PDF files, you must download and install the Adobe Reader from the Adobe website if it is not already installed on your computer.

Release Numbers

The release number on the title page of a document might not correspond to the current product release number; however, all documentation delivered with the product, regardless of release number on the title page, will support your use of the current product release. The release number changes only when a significant portion of a document changes to support a new or updated product release. For example, a document for r8 may still be valid for r8.1. Documentation bookshelves always reflect the current product release number.

Occasionally, we must update documentation outside of a new or updated release. To indicate a minor change to the documentation that does not invalidate it for any releases that it supports, we update the edition number on the cover page. First editions do not have an edition number.