

CA ARCserve® Backup for Windows

NDMP NAS Option Guide

r15



This documentation and any related computer software help programs (hereinafter referred to as the "Documentation") are for your informational purposes only and are subject to change or withdrawal by CA at any time.

This Documentation may not be copied, transferred, reproduced, disclosed, modified or duplicated, in whole or in part, without the prior written consent of CA. This Documentation is confidential and proprietary information of CA and may not be used or disclosed by you except as may be permitted in a separate confidentiality agreement between you and CA.

Notwithstanding the foregoing, if you are a licensed user of the software product(s) addressed in the Documentation, you may print a reasonable number of copies of the Documentation for internal use by you and your employees in connection with that software, provided that all CA copyright notices and legends are affixed to each reproduced copy.

The right to print copies of the Documentation is limited to the period during which the applicable license for such software remains in full force and effect. Should the license terminate for any reason, it is your responsibility to certify in writing to CA that all copies and partial copies of the Documentation have been returned to CA or destroyed.

TO THE EXTENT PERMITTED BY APPLICABLE LAW, CA PROVIDES THIS DOCUMENTATION "AS IS" WITHOUT WARRANTY OF ANY KIND, INCLUDING WITHOUT LIMITATION, ANY IMPLIED WARRANTIES OF MERCHANTABILITY, FITNESS FOR A PARTICULAR PURPOSE, OR NON-INFRINGEMENT. IN NO EVENT WILL CA BE LIABLE TO THE END USER OR ANY THIRD PARTY FOR ANY LOSS OR DAMAGE, DIRECT OR INDIRECT, FROM THE USE OF THIS DOCUMENTATION, INCLUDING WITHOUT LIMITATION, LOST PROFITS, LOST INVESTMENT, BUSINESS INTERRUPTION, GOODWILL, OR LOST DATA, EVEN IF CA IS EXPRESSLY ADVISED IN ADVANCE OF THE POSSIBILITY OF SUCH LOSS OR DAMAGE.

The use of any software product referenced in the Documentation is governed by the applicable license agreement and is not modified in any way by the terms of this notice.

The manufacturer of this Documentation is CA.

Provided with "Restricted Rights." Use, duplication or disclosure by the United States Government is subject to the restrictions set forth in FAR Sections 12.212, 52.227-14, and 52.227-19(c)(1) - (2) and DFARS Section 252.227-7014(b)(3), as applicable, or their successors.

Copyright © 2010 CA. All rights reserved. All trademarks, trade names, service marks, and logos referenced herein belong to their respective companies.

CA Product References

This document references the following CA products:

- BrightStor® Enterprise Backup
- CA Antivirus
- CA ARCserve® Assured Recovery™
- CA ARCserve® Backup Agent for Advantage™ Ingres®
- CA ARCserve® Backup Agent for Novell Open Enterprise Server for Linux
- CA ARCserve® Backup Agent for Open Files on NetWare
- CA ARCserve® Backup Agent for Open Files on Windows
- CA ARCserve® Backup Client Agent for FreeBSD
- CA ARCserve® Backup Client Agent for Linux
- CA ARCserve® Backup Client Agent for Mainframe Linux
- CA ARCserve® Backup Client Agent for NetWare
- CA ARCserve® Backup Client Agent for UNIX
- CA ARCserve® Backup Client Agent for Windows
- CA ARCserve® Backup Enterprise Option for AS/400
- CA ARCserve® Backup Enterprise Option for Open VMS
- CA ARCserve® Backup for Microsoft Windows Essential Business Server
- CA ARCserve® Backup for Windows
- CA ARCserve® Backup for Windows Agent for IBM Informix
- CA ARCserve® Backup for Windows Agent for Lotus Domino
- CA ARCserve® Backup for Windows Agent for Microsoft Exchange Server
- CA ARCserve® Backup for Windows Agent for Microsoft SharePoint Server
- CA ARCserve® Backup for Windows Agent for Microsoft SQL Server
- CA ARCserve® Backup for Windows Agent for Oracle
- CA ARCserve® Backup for Windows Agent for Sybase
- CA ARCserve® Backup for Windows Agent for Virtual Machines
- CA ARCserve® Backup for Windows Disaster Recovery Option
- CA ARCserve® Backup for Windows Enterprise Module

- CA ARCserve® Backup for Windows Enterprise Option for IBM 3494
- CA ARCserve® Backup for Windows Enterprise Option for SAP R/3 for Oracle
- CA ARCserve® Backup for Windows Enterprise Option for StorageTek ACSLS
- CA ARCserve® Backup for Windows Image Option
- CA ARCserve® Backup for Windows Microsoft Volume Shadow Copy Service
- CA ARCserve® Backup for Windows NDMP NAS Option
- CA ARCserve® Backup for Windows Serverless Backup Option
- CA ARCserve® Backup for Windows Storage Area Network (SAN) Option
- CA ARCserve® Backup for Windows Tape Library Option
- CA ARCserve® Backup Patch Manager
- CA ARCserve® Backup UNIX and Linux Data Mover
- CA ARCserve® D2D
- CA ARCserve® High Availability
- CA ARCserve® Replication
- CA VM:Tape for z/VM
- CA 1® Tape Management
- Common Services™
- eTrust® Firewall
- Unicenter® Network and Systems Management
- Unicenter® Software Delivery
- Unicenter® VM:Operator®

Contact CA

Contact Technical Support

For your convenience, CA provides one site where you can access the information you need for your Home Office, Small Business, and Enterprise CA products. At [CA ARCserve Backup Support](#), you can access the following:

- Online and telephone contact information for technical assistance and customer services
- Information about user communities and forums
- Product and documentation downloads
- CA Support policies and guidelines
- Other helpful resources appropriate for your product

Provide Feedback

If you have comments or questions about CA product documentation, you can send a message to techpubs@ca.com.

If you would like to provide feedback about CA product documentation, complete our short [customer survey](#), which is also available on the CA Support website, found at <http://ca.com/docs>.

Documentation Changes

The following documentation updates have been made since the last release of this documentation:

- **Get Drive and Changer Information for a Tape Device**—This new topic describes how you can get the drive and changer information for a tape device.

Contents

| | |
|---|-----------|
| Chapter 1: Introducing the CA ARCserve Backup NDMP NAS Option | 11 |
| Features | 11 |
| Option Architecture | 13 |
| Network Data Management Protocol (NDMP) | 13 |
| NAS Server | 13 |
| Remote Browsing | 13 |
| Supported NAS Backup Configurations | 14 |
| How the Option Backs Up Data | 15 |
| How the Option Restores Data | 16 |
| Restore by Source | 17 |
| Restore by Destination | 17 |
| Dynamic Device Sharing | 18 |
| Supported DDS Configurations | 19 |
| Log Access | 20 |
| | |
| Chapter 2: Installing the Option | 21 |
| Installation Prerequisites | 21 |
| Installation | 21 |
| File System Configuration | 22 |
| Configure NDMP Version 3 | 22 |
| Example: How You Configure the nas.cfg File to Support NDMP Version 3 | 23 |
| Configure NDMP Version 4 | 23 |
| Snapshots and Checkpoints Configuration | 24 |
| Configuration | 25 |
| Configure NAS Devices | 25 |
| Configure DDS | 28 |
| | |
| Chapter 3: Using the Option | 31 |
| How You Manage Backup Operations | 31 |
| Backup Options | 31 |
| Backup Prerequisites | 32 |
| Add a NAS Server | 32 |
| Back Up a NAS Server | 34 |
| Perform a Staging Backup of a NAS Server | 36 |
| How You Can Archive Data on the NAS Server | 37 |
| How You Manage Restore Operations | 37 |

| | |
|--|----|
| Restore Options | 38 |
| Restore Methods | 38 |
| How You Manage Devices and Media | 43 |
| Adapter, Device, and Group Views | 43 |
| Media Management | 43 |
| How You Manage the Database and Reports | 43 |
| How You Manage NAS Operations Using CA ARCserve Backup Utilities | 44 |
| Merge Utility | 44 |
| Media Assure & Scan Utility | 44 |

Appendix A: Using Network Appliance NAS Devices **45**

| | |
|---|----|
| Network Appliance Servers Configuration | 45 |
| Access the Administrative Interface | 45 |
| User Accounts | 45 |
| Enable NDMP on Network Appliance Devices | 45 |
| Configure Tape Library Device Names | 46 |
| Configure the Drive Access Path | 46 |
| Snapshot Configuration | 48 |
| View the Network Appliance System Log | 49 |
| Option Limitations on Network Appliance Devices | 49 |

Appendix B: Using EMC Celerra NAS Devices **51**

| | |
|--|----|
| How the EMC Celerra Host Data Mover Works | 51 |
| Configure the EMC Celerra Data Mover | 52 |
| User Accounts | 52 |
| Enable NDMP on EMC Celerra Devices | 52 |
| Logical Device Names Detection | 53 |
| nas.cfg File Configuration-EMC Celerra Devices | 53 |
| Option Limitations on EMC Celerra Devices | 54 |

Appendix C: Using EMC CLARiiON IP4700 NAS Devices **55**

| | |
|---|----|
| Configure the EMC CLARiiON IP4700 NAS Server | 55 |
| Create User Accounts | 55 |
| Enable NDMP on EMC CLARiiON IP4700 Devices | 55 |
| Logical Device Names | 56 |
| Network Configuration | 57 |
| Volume Configuration | 57 |
| Tape Drives and Tape Libraries | 57 |
| Option Limitations on EMC CLARiiON IP4700 Devices | 58 |

| | |
|---|-----------|
| Appendix D: Using Procom NAS Devices | 59 |
| Procom Server Configuration | 59 |
| User Accounts | 59 |
| Logical Device Names | 59 |
| Network Configuration | 60 |
| Volume Configuration | 61 |
| Tape Drives and Tape Library Units | 61 |
| nas.cfg File Configuration-Procom Devices | 61 |
| Option Limitations on Procom Devices | 63 |
| | |
| Appendix E: Troubleshooting | 65 |
| Devices Do Not Display in the Device Manager | 65 |
| NAS Server Does Not Reinitialize | 66 |
| Debugging is Not Enabled on the NAS Server | 66 |
| Cannot Access the Procom System Log and Environmental Log | 67 |
| Unable to Restore QTree Information Using the NDMP NAS Option | 68 |
| | |
| Appendix F: Feature Support Summary | 69 |
| Supported Backup Features | 69 |
| Supported General Features | 71 |
| Supported Restore Features | 72 |
| Support for NDMP V4 | 72 |
| Certified NAS Devices | 73 |
| | |
| Index | 75 |

Chapter 1: Introducing the CA ARCserve Backup NDMP NAS Option

CA ARCserve Backup is a comprehensive storage solution for applications, databases, distributed servers, and file systems. It provides backup and restore capabilities for databases, business-critical applications, and network clients.

The CA ARCserve Backup NDMP NAS Option lets you back up and restore data on Network Attached Storage (NAS) devices using Network Data Management Protocol (NDMP). The CA ARCserve Backup NDMP NAS Option resides on the same server as CA ARCserve Backup and handles all communication between CA ARCserve Backup and the NAS server that performs backup and restore jobs.

This section contains the following topics:

[Features](#) (see page 11)

[Option Architecture](#) (see page 13)

[How the Option Backs Up Data](#) (see page 15)

[How the Option Restores Data](#) (see page 16)

[Dynamic Device Sharing](#) (see page 18)

Features

The option has the following features:

Push Technology

Lets you complete a backup more efficiently by processing the data locally at the NAS server. Push technology offloads system resources from the CA ARCserve Backup host server and minimizes network traffic by initiating the backup and restore jobs remotely on the NAS server.

Real-time Remote Browsing

Lets system administrators view real-time file and directory information about the remote target machine.

Note: This feature requires NAS-vendor support.

Local and Three-way NDMP Backups and Restores

Lets you use a tape device attached to one of the NAS servers with the other NAS servers in the configuration. The tape device does not need to be attached locally to the NAS server to back up or restore that server.

Note: When you move NAS tape devices from one NAS server to a different NAS server, the new hardware configuration results in a three-way restore operation.

NAS Changer Support

Supports backing up and restoring NAS servers using changers or tape library units attached locally to a NAS server or remotely to a different NAS server. This feature lets you back up and restore a local or remote NAS server using a three-way NDMP backup or restore.

Multistreaming Support

Lets one agent handle different requests and perform multiple jobs simultaneously.

NAS 64-bit Support

Supports x64 CA ARCserve Backup servers to back up NAS filers. (IA64 is not supported.)

Tapecopy Support

Provides the tapecopy utility, which allows you to copy NAS sessions from one tape to another.

The tapecopy utility provides the following NAS session capabilities:

- Perform a tapecopy backup of normal NAS sessions
- Perform a tapecopy backup of NAS sessions with or without a tape span situation (involving one or more tapes)
- Perform a tapecopy backup of NAS sessions from the query mode
- Perform a tapecopy backup of NAS sessions using the "-entire" source option which allows you to copy all tapes in a group to another group.

Most tapecopy switches can be used; however, some limitations apply for tapecopy support of NAS sessions:

- The tapecopy source and destination groups should be SAN dynamic device sharing (DDS) groups (accessible to both the CA ARCserve Backup server and the NAS filer).
- Does not support remote copy (using SAN/NAS DDS environment)
- Does not support copy to a FSD or from a FSD.
- Does not support multiplexing and encryption

Dynamic Device Sharing

Uses DDS to enable the CA ARCserve Backup server to share tape library units (TLU) on a storage area network (SAN). You can share a TLU between multiple NAS servers exclusively, or share multiple NAS servers with a TLU and the CA ARCserve Backup server. DDS enables your environment to choose the optimal device to back up and restore data. For more information about DDS, see the section Dynamic Device Sharing.

Note: To use dynamic device sharing, you must install the CA ARCserve Backup SAN Option and Tape Library Option.

More information:

[Dynamic Device Sharing](#) (see page 18)

Option Architecture

The NDMP NAS Option provides services that allow CA ARCserve Backup to back up and restore files and directories. These services utilize several components in a variety of configurations to perform backup and restore jobs.

Network Data Management Protocol (NDMP)

NDMP is a communication protocol that allows interaction with a NAS server on the network. It lets a backup application, such as CA ARCserve Backup, control the backup and retrieval of data performed by an NDMP server. The NDMP-enabled server executes on NAS servers. It enables data transfers between tape library units and disks connected locally and remotely to any NAS server on the network.

NDMP allows a network backup application, such as CA ARCserve Backup, to initiate backup operations from a network node. The backup application does not transfer data. Instead, the NDMP server executing on the NAS server performs the data transfer.

More information:

[File System Configuration](#) (see page 22)

NAS Server

The NAS server implements the NDMP protocol and performs the actual backup and restore operations. The NDMP server executes on the NAS server and is supplied by the manufacturer of the NAS server. CA ARCserve Backup interfaces with the NDMP server running on the NAS server using NDMP.

Remote Browsing

CA ARCserve Backup automatically enumerates files and directories for Network Appliance servers that support NDMP Version 4. If a NAS server supports NDMP Version 3, the volumes are automatically enumerated.

More information:

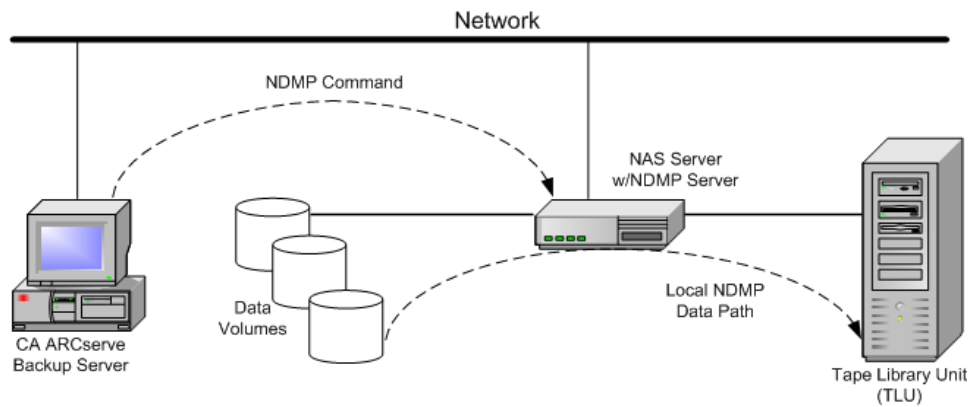
[File System Configuration](#) (see page 22)

Supported NAS Backup Configurations

CA ARCserve Backup supports NAS local and three-way NDMP backups.

NAS Local NDMP Backup

If a NAS server has a locally-attached tape device, CA ARCserve Backup can trigger a serverless backup of the NAS server's data to this device.

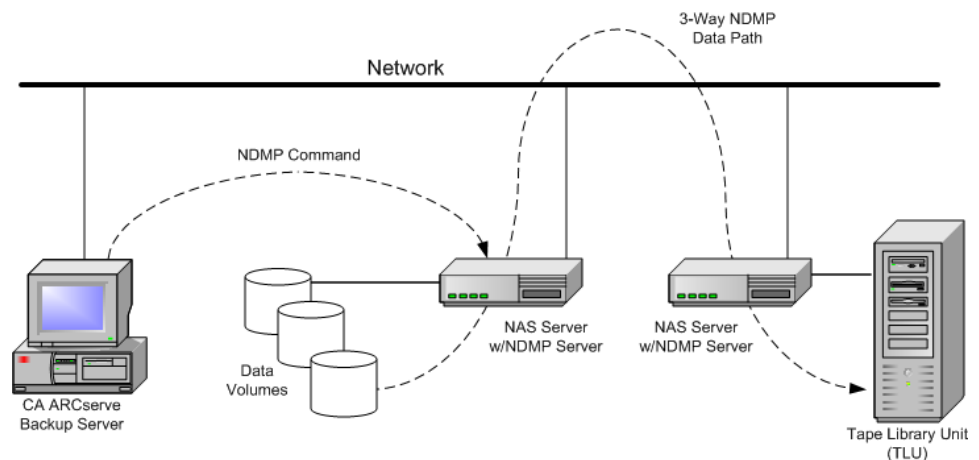


NAS Three-way NDMP Backup

Some NAS servers on the network may not have tape devices attached to them. As long as at least one NAS server has an attached tape device, that device can be used when backing up other NAS servers.

Example: NAS Three-way NDMP Backup

NAS Server 1 does not have a tape device attached to it, but NAS Server 2 does. The NDMP NAS Option can back up NAS Server 1's data to the tape device attached to NAS Server 2. This configuration is known as NAS three-way NDMP backup.



How the Option Backs Up Data

You can use the Backup Manager to configure and submit a backup job for data in your network. Choose any NAS server as the source and a tape device connected to a NAS server as the destination.

When you back up data from a file system, the Network Appliance NAS server creates a snapshot of that data set so that the backup reflects a consistent view of the data at the time of the backup. The data is then indirectly backed up from this snapshot.

Important! You can use NDMP NAS Option when you have to back up data stored on a NAS server to a tape device that is connected to either the same NAS server or another NAS server. In either case, the NAS server must support NDMP.

In an environment where a shared backup device on a SAN is connected to the CA ARCserve Backup server and a NAS device, you can use the NDMP NAS Option to back up data directly from the NAS server to the shared device.

For more information about the backup features of CA ARCserve Backup, see the *Administration Guide*.

Important! The backup options depend on the NDMP version implemented and the type of NAS server.

More information:

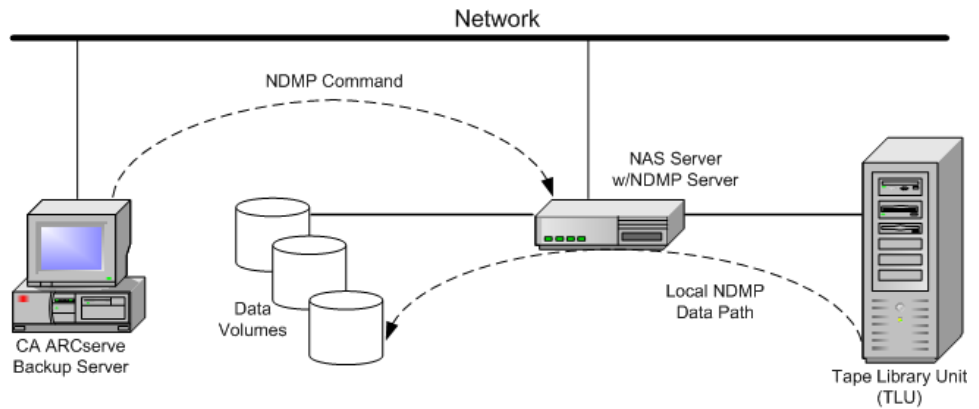
[Supported Backup Features](#) (see page 69)

[Supported General Features](#) (see page 71)

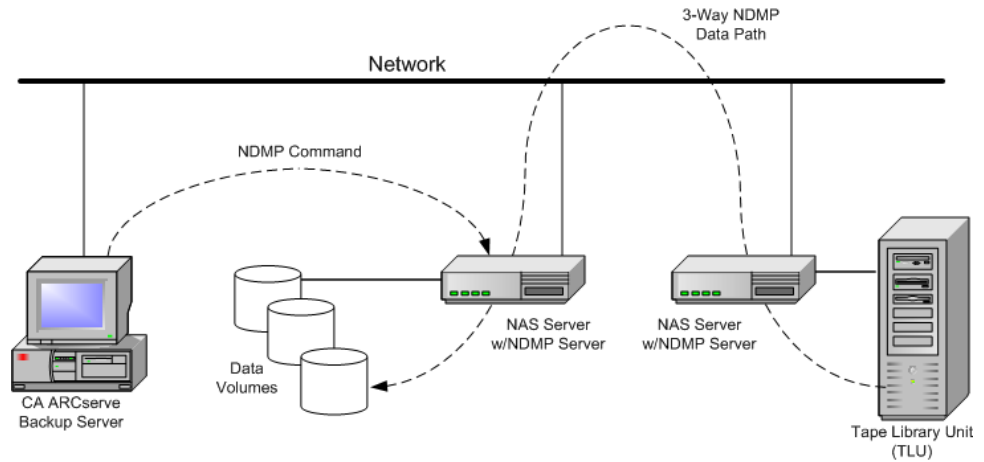
How the Option Restores Data

The restore options depend on the NDMP version implemented and the type of NAS server. To restore data from a tape device to a NAS server, use the Restore Manager to configure and submit the job. For more information about the restore features, see the *Administration Guide*.

The following diagram shows an example of a local restore:



The following diagram shows an example of a three-way restore:



More information:

- [Supported Restore Features](#) (see page 72)
- [Supported General Features](#) (see page 71)

Restore by Source

You can view NAS servers by clicking the Source tab of the Restore Manager. You can select individual NAS files or directories for recovery, as you can for other types of hosts or clients supported by CA ARCserve Backup.

Restore by Destination

Because NAS backups are third-party backups, they use the NAS vendor’s proprietary format. Although most NAS servers use NDMP, it is advisable to perform backup and restore operations to the same vendor’s type of server. Furthermore, you cannot restore the NAS session if you move the tape to a device locally connected to the CA ARCserve Backup server.

You can browse file or directory selection for restores in the same way as you browse NAS servers from the Source tab of the Backup Manager.

Dynamic Device Sharing

You must install the CA ARCserve Backup SAN Option and Tape Library Option before you can start using dynamic device sharing (DDS).

In an environment composed of fibre attached storage devices with one or more CA ARCserve Backup servers, complications can arise when exposing devices that reside on the fibre uniquely. Duplication of devices occurs when more than one fibre adapter exists to enumerate the devices on a fibre loop.

Note: If individual media engines reside on the same SAN, you must collect and organize multiple media engines from a central management application to ensure that these engines integrate seamlessly.

In this case, an NDMP tape server running on a NAS device is considered a media engine. The CA ARCserve Backup tape engine is also considered a media engine. Using this feature will allow them to integrate seamlessly.

When separate fibre adapters exist to enumerate devices on a fibre loop, DDS dynamically manages all duplicate references to a device. DDS gives you more flexibility in choosing how to design your storage topology.

DDS is cost efficient because only one library is needed for backing up NAS and non-NAS data.

You can do the following with DDS:

- Share drives and tape library unit (TLU) control seamlessly between the local CA ARCserve Backup server and the NAS server.
- Back up NAS data to the same tape that you backed up the non-NAS data to.
- Multi-stream the NAS and non-NAS jobs and package to run together. CA ARCserve Backup chooses the optimal data path on all backups and restores. All NAS servers can detect the drives and data. This eliminates the need for three-way backups, and only direct two-way data paths will be used for backing up data.

Note: DDS does not support restoring local backups to a NAS server, or NAS server backups to the local CA ARCserve Backup server. This limitation exists because NAS backups are third-party backups, and are written in a format that is proprietary to the NAS vendor.

More information:

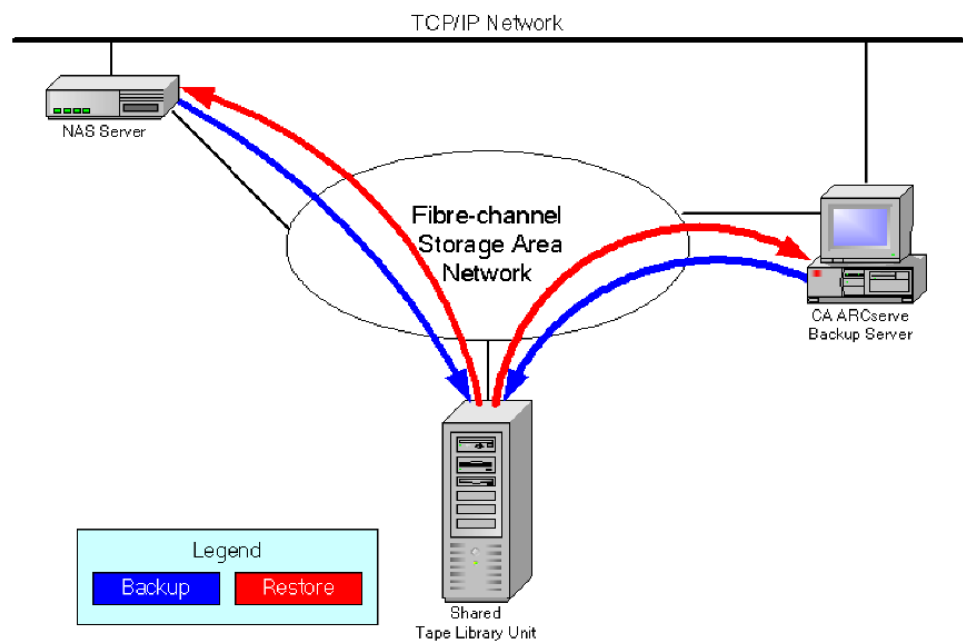
[Configure DDS](#) (see page 28)

Supported DDS Configurations

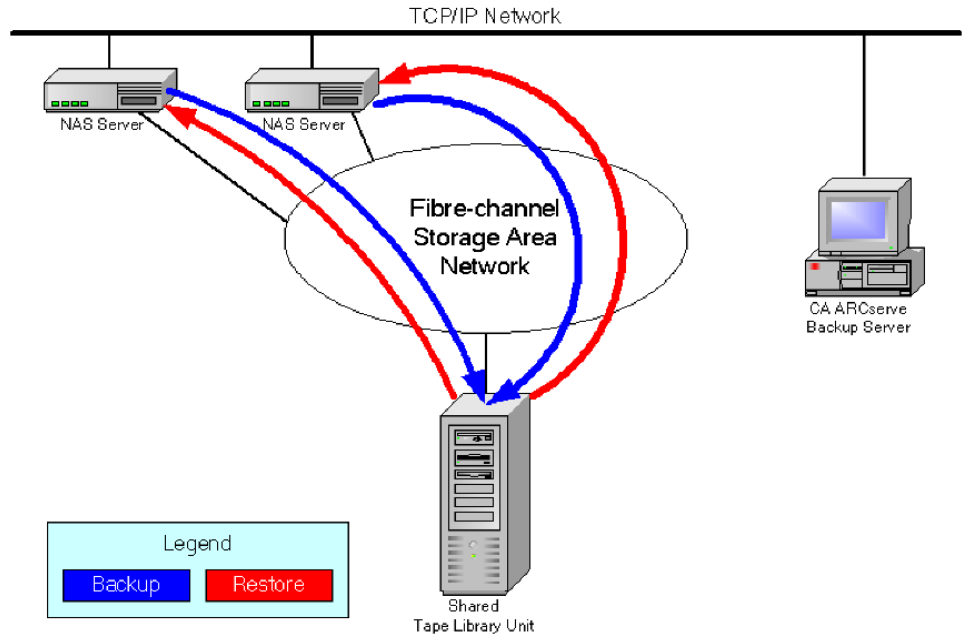
The NDMP NAS Option supports two fundamental DDS configurations:

- One or more NAS servers connected to the SAN that share a tape drive or TLU, and the CA ARCserve Backup server is connected to the SAN.
- Two or more NAS servers connected to the SAN that share a tape drive or TLU, and the CA ARCserve Backup server is not connected to the SAN.

The following diagram shows an example of one or more NAS servers connected to the SAN that share a tape drive or TLU, and the CA ARCserve Backup server connected to the SAN.



The following diagram shows an example of two or more NAS servers connected to the SAN that share a tape drive or TLU, and the CA ARCserve Backup server not connected to the SAN.



Log Access

The NDMP NAS Option generates the information contained in logs in the <base install>/Logs directory. The available logs and the type of information provided in each log is as follows:

Tape.log

Provides information in the DDS Device Map section that details whether or not the primary or secondary device reference chosen was optimal. This log is generated by the Tape Engine.

LibSetup.log

Provides information about the scenario where duplicate device references are detected on all SCSI ports. This log is generated by the CA ARCserve Backup Tape Library Option.

Chapter 2: Installing the Option

This section describes how you can install and configure the NDMP NAS Option. You should be familiar with the characteristics and requirements and with administrator responsibilities on the specified operating systems.

This section contains the following topics:

[Installation Prerequisites](#) (see page 21)

[Installation](#) (see page 21)

[File System Configuration](#) (see page 22)

[Configuration](#) (see page 25)

Installation Prerequisites

If you want to use the NDMP NAS Option, you must first prepare and configure the NAS server, and the CA ARCserve Backup server. Verify the following prerequisites:

- Your system meets the minimum hardware and software requirements needed to install the NDMP NAS Option. For a list of requirements, see the readme file.
- The NAS server's operating system is compatible with CA ARCserve Backup. For more information about hardware and software requirements for Network Appliance, EMC Celerra, EMC CLARiiON IP4700, and Procom NAS devices, see the readme file.
- CA ARCserve Backup is installed and working properly.
Note: You must install the option on the CA ARCserve Backup server.
- You have administrator rights or the proper authority to install software on the computers where you will be installing the option.
- You know the name and the password of the machine you are installing the option on.
- You have made a note of any changes to the default installation path.

Installation

The NDMP NAS Option follows the standard installation procedure for the system components, agents, and options of CA ARCserve Backup. For more information about this procedure, see the *Implementation Guide*.

Restart your computer when the installation is complete.

File System Configuration

The NDMP NAS Option installs a configuration file named `nas.cfg` in the NAS Option folder. This is the file in which you specify the items that are displayed on the Source tab of the Backup Manager. After configuring this file, you can browse the items entered in the Backup Manager.

Configure NDMP Version 3

When a NAS server supports NDMP Version 3, you can configure the `nas.cfg` file for partial-volume backups. The NDMP NAS Option cannot determine volume mappings for these servers. To perform partial-volume backups, you must include the paths in the configuration file.

To enter the path information

1. Open the `nas.cfg` file located in the `<base install>\NAS Option` folder.
2. On the first line, enter the host name of the NAS server.
3. Enter each absolute path, starting with the logical device name, on separate lines following the host name of the NAS server.
4. Enter a semicolon to end each server configuration.
5. Save the file.

More information:

[Network Data Management Protocol \(NDMP\)](#) (see page 13)

Example: How You Configure the nas.cfg File to Support NDMP Version 3

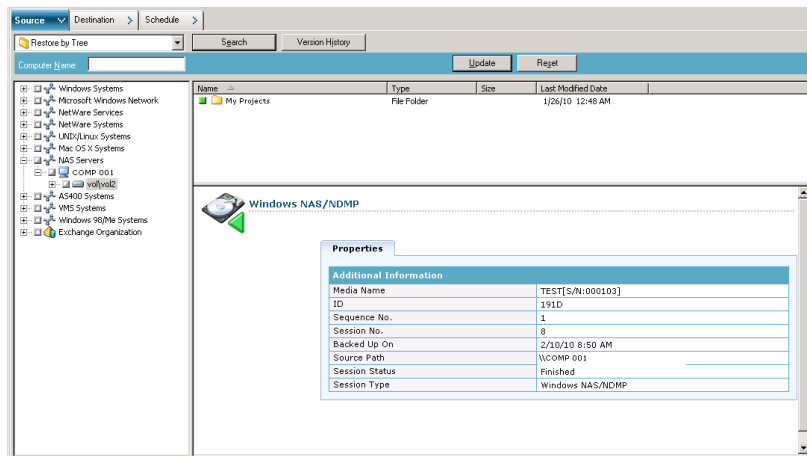
The following is an example of the nas.cfg file to back up a partial volume consisting of database files:

```

NAS.CFG - Notepad
File Edit Format View Help
# Copyright (C) 2002 - 2007 CA
#
# This is a sample configuration file used by the CA ARCserveBackup NAS Option
#
# This file contains the mappings of nodes to volumes or logical devices
# Each entry should be kept on an individual line. Starting with the
# Hostname of the NAS server followed by the volume names on the
# successive lines. Node Configurations are separated by semi-colons.
# Additionally, comments (such as these) may be inserted on individual
# lines or following any node or volume name denoted by a '#' symbol.
#
# For example:
#
#           NODENAME           # NAS server
#           /LOGICAL_DEVICE_NAME1 # the volume name of the first logical device
#           /LOGICAL_DEVICE_NAME2 # the volume name of the second logical device
#           ;                   # semi-colon indicates the next node configuration
#
#           NASSERVER
#           /vol/myvol/.snapshot/hourly.1 # the backup path you want to show in source browse tree
#           /c.chkpnt/daily
#           "/vol/vol0/I have a spaces in my path so I use quotes" # Use quotes on paths with spaces
#           /c/etc
#
# <NAS SERVER NAME>
# </volume name>
# </volume name>
# </volume name>
# ;
# <NAS SERVER NAME>
# </volume name>
# </volume name>
# </volume name>
# ;
qa-filer1
/vol/vol0/.snapshot/hourly.0
;

```

The following is an example of the corresponding Restore Manager window:



Configure NDMP Version 4

If you are using a NAS server with NDMP Version 4, and support for Snapshot Management Extensions, you do not have to use the nas.cfg file. However, currently only Network Appliance NAS servers support this functionality.

More information:

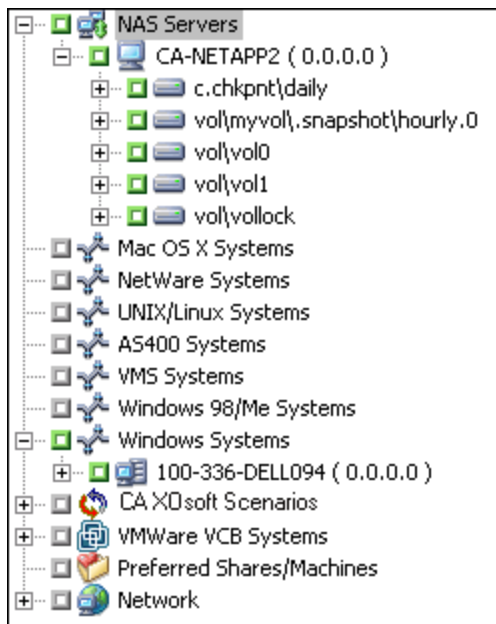
[Network Data Management Protocol \(NDMP\)](#) (see page 13)

Snapshots and Checkpoints Configuration

A snapshot or a checkpoint is an online, read-only copy of an entire file system that protects against deletions or modifications of files without duplicating file contents. Snapshots let you restore files and back up the files to tape while the NAS server is in use. Snapshots of data on a file system can also be created and scheduled, as needed, by the NAS administrator.

Note: If you are backing up snapshots or checkpoints on your NAS server, you must configure the nas.cfg file. You edit the file like it was for a partial-volume backup. The names of the snapshot files are vendor-specific.

The following is an example of the Backup Manager window showing a Network Appliance snapshot named hourly.0 and a checkpoint named daily.



Configuration

After you have completed installing the NDMP NAS Option, you must configure the NAS servers, tape drives, or tape library units.

Before you configure the devices and drives, confirm the following:

- You can ping or access the NAS server from the server on which the NDMP NAS Option is installed.
- The NAS server being used as the destination for backup data can detect its locally attached drives or tape library units.
- The tape library units and NAS servers are certified by CA.
- The tape drives are certified by the NAS vendors.
- The tape drive is not already opened and in use by another NDMP session (only one connection is allowed at a time).

Configure NAS Devices

You can configure the NAS drives and tape devices either immediately after you install the NDMP NAS Option or from the Device Configuration dialog. You must add the NAS server to the backup server to use the DDS environment.

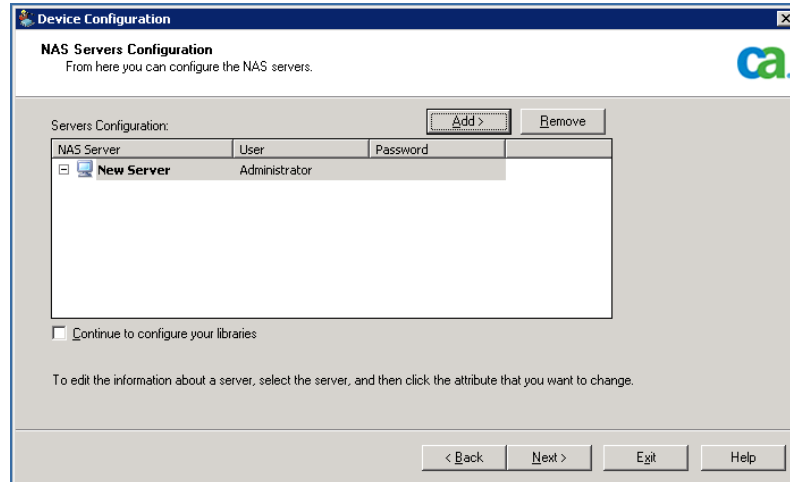
Note: If you are configuring the devices and drives immediately after installation, you can skip to Step 5 of the following instructions.

To configure the NAS devices

1. Select Device Configuration from the CA ARCserve Backup Home Page.
The Device Configuration Welcome window appears.
2. Select NAS Servers and click Next; click Yes to stop the tape engine service.
3. Provide your security credentials if required.
The tape engine service is stopped and the NAS Servers Configuration dialog opens.
4. Click Add, and Select NAS Server from the drop-down list.

5. Highlight New Server and enter the name of the NAS server, user name, and password.

The user name and password must be associated with a NAS server account with NAS Administrative privileges.



Steps 6 and 7 are optional steps for NAS servers supporting NDMP Versions 3 and 4. NAS servers which are enabled for NDMP Version 3 or Version 4 allow the client to detect backup devices that are configured on the NAS server. The NDMP NAS Option detects and displays all the detected devices. The format and usage rules governing the logical device names differ from one vendor to another. After you complete this step, DDS will be enabled for use.

For information about how you can determine logical device names, see the vendor-specific appendixes in this guide.

If you are using NDMP Version 3 or Version 4, skip Steps 6 and 7 and continue with Step 8.

6. Click Add, and select Tape/Changer Device.
7. Highlight New Tape Device and enter the tape device information.

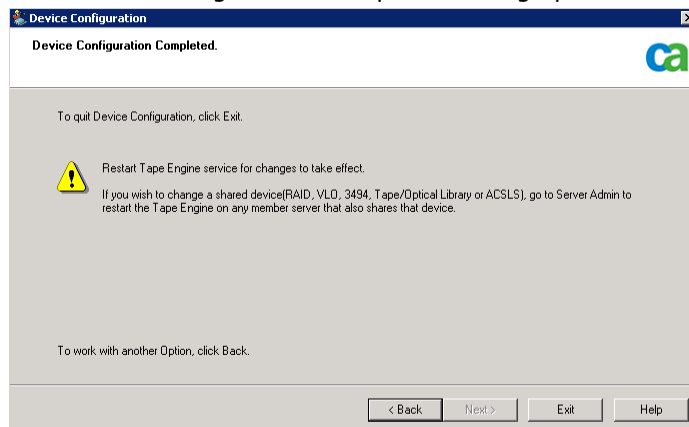
You must enter a logical device name that represents the tape device or tape library unit. A logical device name refers to a unique string that the NAS server or NDMP server uses to refer to the device. For more information about how you can get drive and changer information, see [Get Drive and Changer Information for a Tape Device](#) (see page 27).

8. Repeat Steps 4 and 5 (and optionally 6 and 7) for all additional NAS servers that you want to configure for use with the NDMP NAS Option.

The CA ARCserve Backup server can interact with more than one NAS server over the network.

9. When you have finished adding all the server and tape devices, clear the Continue to configure your libraries check box, and click Finish.

The Device Configuration Completed dialog opens.



10. Click Exit. If you are sure that you want to exit Device Configuration, click Yes.
11. Start the Tape Engine.

More information:

[Supported DDS Configurations](#) (see page 19)

Get Drive and Changer Information for a Tape Device

When you add a tape or changer device, you must provide the drive and changer information for the device.

To get the drive and changer information for a device

- run following command on your NAS server to get the tape drive information:
`sysconfig-t`
- run following command on your NAS server to get the changer information:
`sysconfig-m`

Configure DDS

Before you start configuring DDS, verify if you have installed the following options:

- SAN Option
- Tape Library Option

To configure your system to use DDS

1. Open the fibre switch.

All of the NAS servers and CA ARCserve Backup servers detect all of the attached devices and each other.
2. Configure a SCSI bridge or router such that it does not expose itself as a SCSI array device.

NAS servers may not be able to connect to the SCSI bridge or router if it exposes itself as an array device.
3. Verify that all NAS and CA ARCserve Backup servers can detect all devices.
4. Ensure that online TLUs are in the ready state.
5. Confirm that the devices are shared by enabling the Tape Engine Debug Log in Server Administration when starting the tape engine.

This log (labeled tape.log) provides you with details about devices that are shared and not shared. The details can be found in the List Dynamic Device Sharing Device Map section of the Tape Engine Debug Log.

```

03/01 13:21:15 [048c] *****
03/01 13:21:15 [048c] *-----LIST DYNAMIC DEVICE SHARING DEVICE MAP-----*
03/01 13:21:15 [048c] *****
03/01 13:21:15 [048c] UNIQUE -> LDN[0] AS[0][0] INQ[LG CD-ROM CRD-8482B1.05] S/N[ ]
03/01 13:21:15 [048c] UNIQUE -> LDN[1] AS[2][0] INQ[FUJITSU MAN3184MP 5507] S/N[ ]
03/01 13:21:15 [048c] PRIMARY -> LDN[2] AS[4][0] INQ[OVERLANDLIBRARYPRO 0416] S/N[1L34567892]
03/01 13:21:15 [048c] -> LDN[9] AS[5][0] INQ[OVERLANDLIBRARYPRO 0416] S/N[1L34567892]
03/01 13:21:16 [048c] -> LDN[9] AS[6][0] INQ[OVERLANDLIBRARYPRO 0416] S/N[1L34567892]
03/01 13:21:16 [048c] PRIMARY -> LDN[3] AS[4][0] INQ[SONY SDX-500C 0107] S/N[0001484496]
03/01 13:21:16 [048c] -> LDN[9] AS[5][1] INQ[SONY SDX-500C 0107] S/N[0001484496]
03/01 13:21:16 [048c] -> LDN[9] AS[6][1] INQ[SONY SDX-500C 0107] S/N[0001484496]
03/01 13:21:16 [048c] PRIMARY -> LDN[4] AS[4][0] INQ[SONY SDX-500C 0107] S/N[0001484450]
03/01 13:21:16 [048c] -> LDN[9] AS[5][2] INQ[SONY SDX-500C 0107] S/N[0001484450]
03/01 13:21:16 [048c] -> LDN[9] AS[6][2] INQ[SONY SDX-500C 0107] S/N[0001484450]
03/01 13:21:17 [048c] UNIQUE -> LDN[5] AS[4][0] INQ[Crossrds4250 Router 004c] S/N[ ]
03/01 13:21:17 [048c] UNIQUE -> LDN[6] AS[4][0] INQ[Crossrds4250 Router 004c] S/N[ ]
03/01 13:21:17 [048c] UNIQUE -> LDN[7] AS[4][0] INQ[Crossrds4250 Router 004c] S/N[ ]
03/01 13:21:17 [048c] UNIQUE -> LDN[8] AS[4][0] INQ[Crossrds4250 Router 004c] S/N[ ]
03/01 13:21:17 [048c] *****
    
```

6. Verify that the tape drive is not already opened and in use by another NDMP session.

Note: Shared SCSI devices are displayed under the local adapter. The group and adapter icon will be marked as shared.

Limitations of Using DDS

Configuring your system to use DDS has the following restrictions:

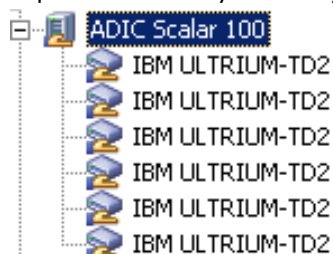
- If you have installed the CA ARCserve Backup SAN Option, then you must install the NDMP NAS Option on the primary backup server.
- The SAN must allow all member servers to detect attached backup devices.
- DDS does not function in a cross-platform environment.
- NAS servers must meet all of the vendor requirements by using certified devices and equipment to function properly and individually on the SAN.

How You Can Identify Dynamically Shared Devices

You can use any of the following methods to identify dynamically shared devices.

Device Manager directory tree

The directory tree of the Device Manager window identifies dynamically shared devices with the icon shown in the following example. This example represents one dynamically shared changer with six drives.



Device Manager Properties pane

If a device is dynamically shared, you can view summary and detail information about the shared device in the Properties pane in the Device Manager window.

Summary Details

| Device Information | |
|--------------------|------------|
| Vendor | ADIC |
| Product Name | Scalar 100 |
| Firmware Version | 2.62 |
| SCSI Compliance | SCSI-III |
| Serial No. | 1JSV20053A |

| Device Configuration | |
|----------------------|--|
| Description | Device:1=Board:2,Bus:0,SCSI ID:0,LUN:0 |

This is a shared device connected to NAS.

| | |
|-----------|-----------------|
| Shared by | 100-336-DELL094 |
| Shared by | CA-NETAPP2 |

Chapter 3: Using the Option

This section describes you how you can perform backup and restore operations using the NDMP NAS Option. For more information about backing up and restoring data, see the *Administration Guide*.

This section contains the following topics:

[How You Manage Backup Operations](#) (see page 31)

[How You Manage Restore Operations](#) (see page 37)

[How You Manage Devices and Media](#) (see page 43)

[How You Manage the Database and Reports](#) (see page 43)

[How You Manage NAS Operations Using CA ARCserve Backup Utilities](#) (see page 44)

How You Manage Backup Operations

To back up data from your network, use the Backup Manager to configure and submit a backup job. You can use any NAS server as your source and a tape device connected to either the same NAS server or another NAS server as your destination. Although all NAS servers use NDMP, it is advisable to perform backup and restore operations to the same vendor's type of server.

Backup Options

When you select a NAS server to backup, a customized set of standard CA ARCserve Backup options are available. Some of the standard options are not available due to the version of NDMP in use on the NAS server. Other options are not available due to the limitations of a vendor's particular server.

For example, CA ARCserve Backup does not support backing up multiple folders from the same volume as part of the same job on most NAS servers. You can select individual folders as part of separate jobs and schedule them to run concurrently. If you specify multiple folders, CA ARCserve Backup recognizes only the first folder in a volume and ignores the rest of the folders specified.

NDMP version 3 does not support multi-byte or Unicode names. This can cause the granularity of the backup session's restore view to be reduced.

Network Appliance NAS servers, however, enable you to back up multiple files and folders in a single volume.

More information:

[Supported Backup Features](#) (see page 69)

[Supported General Features](#) (see page 71)

Backup Prerequisites

Before you start a backup job, verify the following:

- You are using the correct user name and password for security logins on the NAS server.
- You see the NAS devices in the Device Manager window.
- You can browse the NAS sever in the respective source and destination trees of the Backup Manager and Restore Manager.
- If you are backing up a snapshot or checkpoint, the server is configured to create these files.
- The tape drives that you are using are certified by the NAS vendor.
- The tape library unit and the NAS server that you are using are certified by CA.

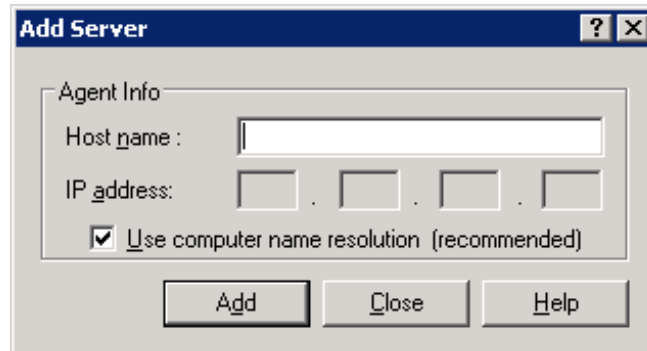
Add a NAS Server

You must add the NAS server before it can be displayed in the Source tab of the Backup Manager.

To add a NAS server

1. On the Backup Manager Source tab, right-click NAS Servers in the displayed tree.
2. Select Add Machine/Object.
The Add Server dialog opens.

3. Enter the Host name and IP address. In the absence of an IP address, select the Use Computer Name Resolution check box.



Important! You must specify the same server name for the NAS server in the Device Configuration dialog and in the Add Server dialog, especially in a shared environment of NAS servers and Data Mover servers. If the server names do not match, the NAS backup or restore job might fail. For example, if you specify the server name as 'Server A' in the Device Configuration dialog, you must specify 'Server A' in the Add Server dialog as well.

4. Click Add.

The server is registered.

Note: CA ARCserve Backup prompts you to enter security information when you attempt to browse or expand the NAS server that you just added.

For Network Appliance NAS servers that support the NDMP Version 4 Snapshot Management Interface Extension, CA ARCserve Backup enumerates the volumes, directories, and files on the NAS server. When using Network Appliance servers, you can select more than one subtree per volume. Other NAS vendors are limited to one selection per volume. For NAS servers that support NDMP Version 3, CA ARCserve Backup can automatically enumerate all the volumes that are defined on the NAS server.

More information:

[Configuration](#) (see page 25)

[Snapshot Configuration](#) (see page 48)

Back Up a NAS Server

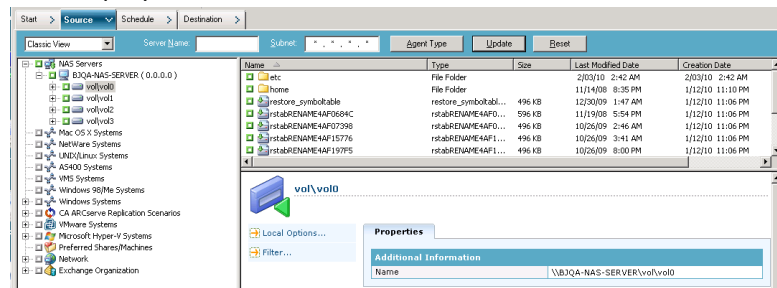
CA ARCserve Backup supports backing up individual NAS server volumes, as well as an entire machine.

Note: You cannot back up a NAS server to a tape drive that is connected to the local CA ARCserve Backup server. Also, you cannot select agents or the local file system on a CA ARCserve Backup server and back them up to a tape drive connected to the NAS servers.

To back up a NAS server

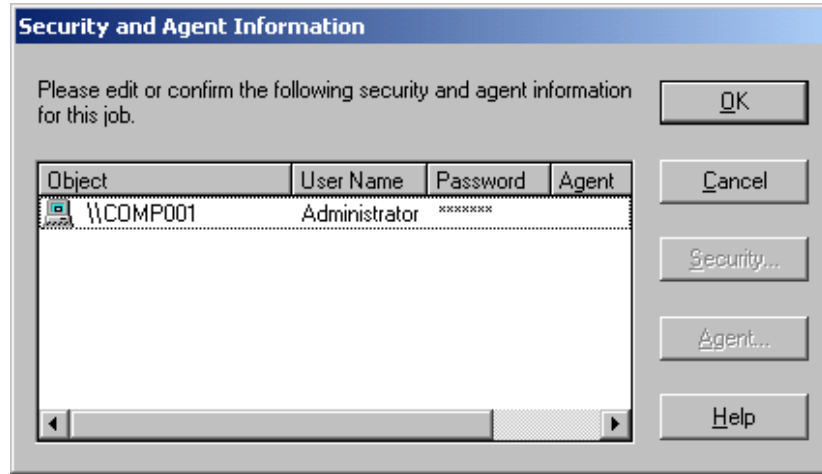
1. Open the Backup Manager and expand a NAS server on the Source tab.

This displays the volumes on the server.

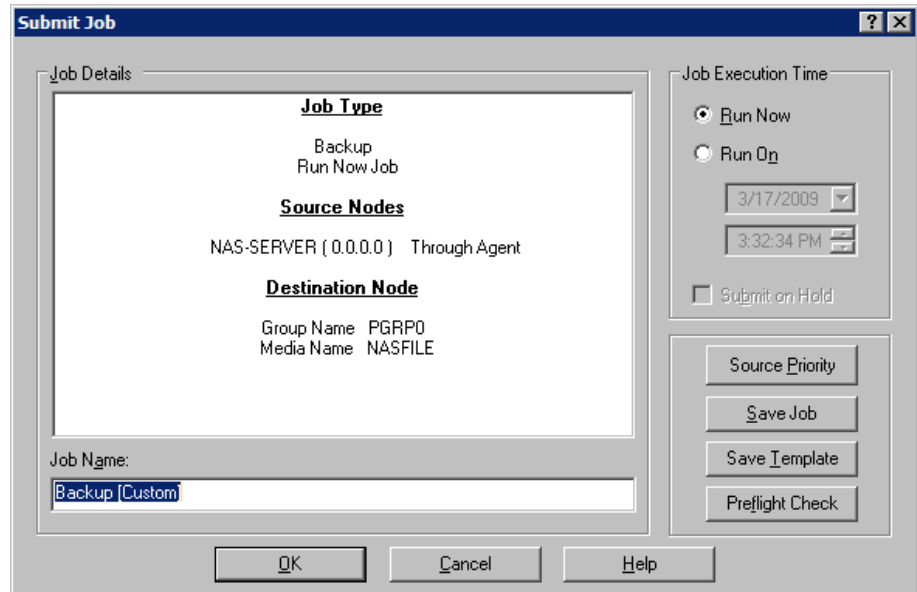


2. Select the volumes for backup and click the Destination tab.
3. From the list of available devices, select the device that you want to use for the backup.
4. Select the Schedule tab and then select the desired Repeat or Rotation Method from the drop-down list.

- Select the Backup Method from the list and click Submit on the toolbar. The Security and Agent Information dialog opens.



- Edit the information, or click OK. The Submit Job dialog opens.



7. Select one of the following Job Execution Time options:

Run Now

Starts the backup job immediately.

Run On

Lets you specify the date and time when you want to run the backup job.

Note: For more information about saving jobs and job templates, see the *Administration Guide*.

8. Click OK.

You have successfully submitted the backup job.

After submitting the backup job, you can monitor its progress by opening the Job Status Manager from the CA ARCserve Backup Home Page.

CA ARCserve Backup does not display a progress bar or percentage complete statistic in its Job Monitor when backing up EMC CLARiON IP4700, Celerra, and Procom NAS servers.

Note: Although all NAS servers use NDMP protocol, you should perform backups and restores to the same vendor's servers or compatible hosts.

Perform a Staging Backup of a NAS Server

Before starting this procedure, ensure that the staging group has been dynamically shared between the CA ARCserve Backup Server and the NAS filer.

To perform a staging backup of a NAS server

1. Open the Backup Manager and select Enable Staging.
2. Click the Source tab and then expand a NAS server.

The volumes on the server are displayed.

3. Select the volumes for backup.
4. Click the Schedule tab and then select the Repeat or Rotation Method.

If you have more than one drive in each group, the repeating job can be submitted as every 5 minutes. If you only have one drive in each group, the repeating rate can be longer.

5. Click the Staging Location tab and select the staging group that you want for the staging backup.

6. Click the Migration Policy tab and specify the staging policies you want applied.

Note: For more information about the Staging Policy options, see the Administration Guide.

7. Click the Destination tab and select the destination for the staging backup job.

You can either select another NAS group or the same NAS group if it has more than one drive.

8. Click Submit in the toolbar.

The staging backup job starts or is scheduled to be executed.

How You Can Archive Data on the NAS Server

You can only use the NDMP NAS Option to archive the data on the NAS server to its locally attached tape device or to another NAS server with an attached tape device. If the data on the NAS server needs to be backed up to the device on the CA ARCserve Backup server, you can use the Preferred Shares to back up the NAS sever.

Note: To allow CA ARCserve Backup to connect to Network Appliance servers through Preferred Shares, you must create an ADMIN\$ share for the volume containing the /ETC folder on the NAS server. Additionally, you should not back up NAS devices through Preferred Shares, as it does not utilize the NAS-attached backup device or the NDMP protocol for proper NAS operating system backup procedures.

CA ARCserve Backup supports archiving and restoring data from a NAS server to its locally attached tape device and to a tape device attached to another NAS server. However, for non-NAS servers, you can archive data from the server to the tape device connected to the NAS server only if the backup device is shared.

More information:

[Supported DDS Configurations](#) (see page 19)

How You Manage Restore Operations

To restore data from a NAS server, use the Restore Manager for configuring and submitting the job. You can restore data from the tape device attached directly to the local NAS server or from a tape device attached to a different NAS server.

The *Administration Guide* provides a description of the CA ARCserve Backup restore features. However, NAS server restores create some limitations for the normal functionality of CA ARCserve Backup. Some of these result from the NDMP protocol, while others result from limitations imposed by particular NAS servers.

Restore Options

When a NAS server is selected for a restore job, the CA ARCserve Backup options are global options that apply to all restore jobs in general. Options default to overwrite mode for restore jobs. You should be very careful when picking your restore location.

More information:

[Supported Restore Features](#) (see page 72)

[Supported General Features](#) (see page 71)

Restore Methods

You can restore data using two methods—restore by tree or restore by session method. The restore by tree method lets you restore specific files and directories, and the restore by session method lets you restore files and directories from a particular backup session. After you select the files for recovery, you must specify the destination and then start the restore operation.

More information:

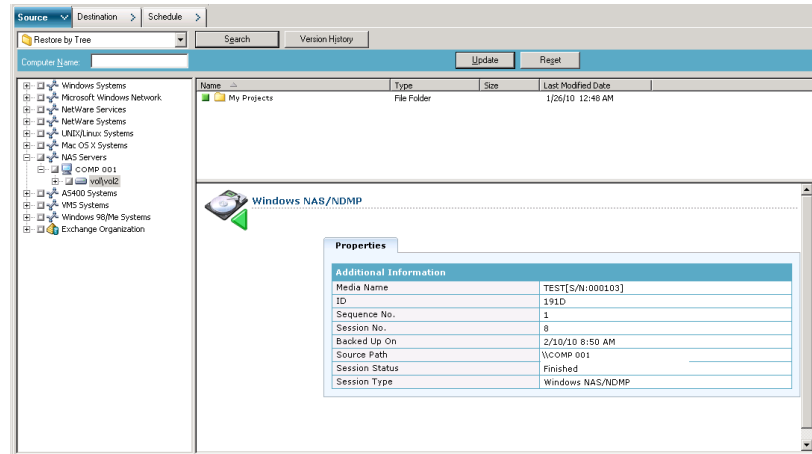
[NAS Restore Job Limitations](#) (see page 42)

Restore by Tree

The restore by tree method lets you restore individual files and directories. Use this method when you do not know which media contains the data you need, but you know the machine from which the backup originated.

To restore by tree

1. Open the Restore Manager.
2. On the Source tab, select Restore by Tree.



3. Select the files or directories you want to restore.

More information:

[Start the Restore Job](#) (see page 40)

[NAS Restore Job Limitations](#) (see page 42)

Restore by Session

The Restore by Session method lets you restore backup sessions, individual files and directories. Use this method when you know the media name, but are not certain about the session you want to restore.

To restore by session

1. Open the Restore Manager.
2. On the Source tab, select Restore by Session.
3. Select the session or files that you want to restore.

More information:

[Start the Restore Job](#) (see page 40)

[NAS Restore Job Limitations](#) (see page 42)

Start the Restore Job

This section describes how you can submit a job to restore NAS server data.

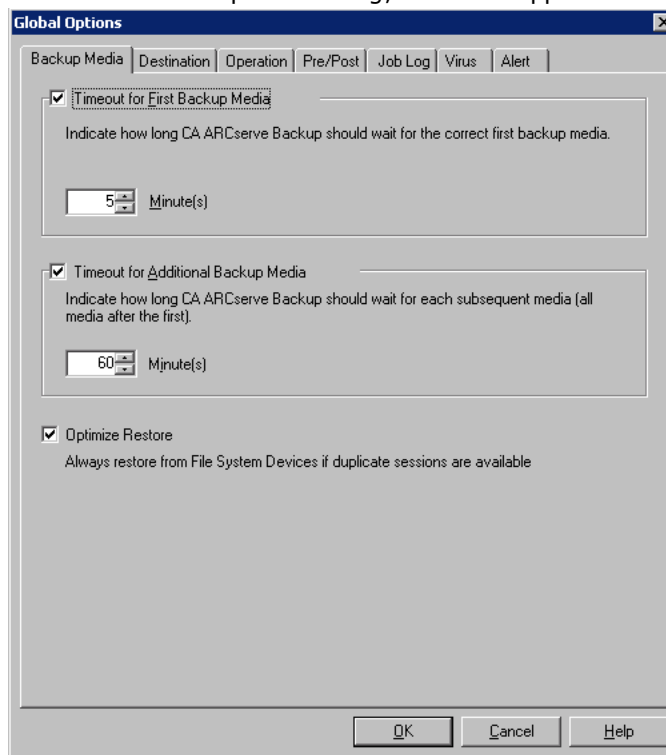
To start the restore job

1. Select the Destination tab.
2. Select the file system path for the restore.

You can specify a directory path for restore. When you manually specify a destination path, you can browse to select a restore destination, or enter the path to the restore destination in the following format:

\\TESTvol\vol0\destination

3. From the Global Options dialog, select a supported restore option.



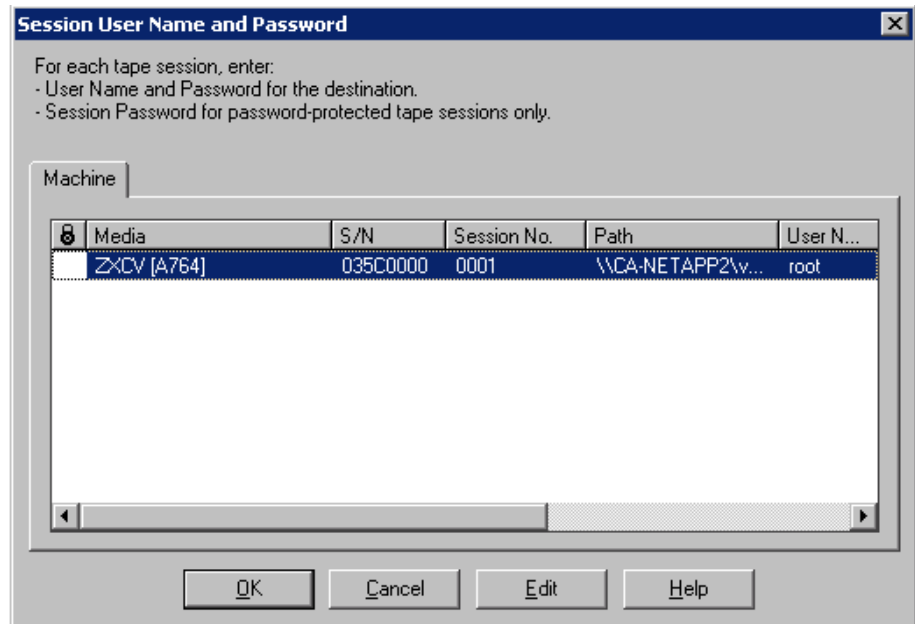
Click OK.

4. Click Submit in the toolbar.

The Restore Media dialog opens and lists the tapes required to restore the selected sessions.

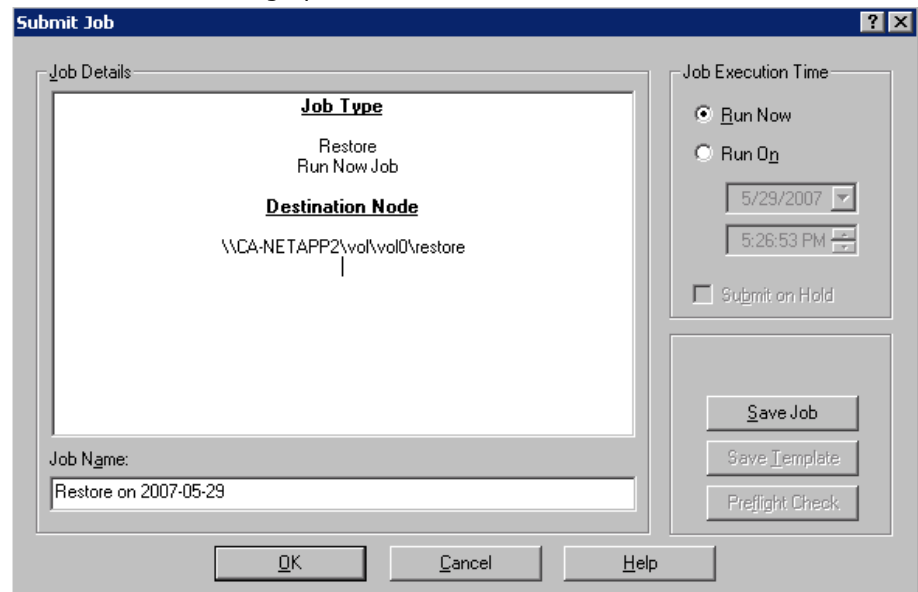
- Select the tapes and click OK.

The Session User Name and Password dialog opens.



- Edit the information or click OK.

The Submit Job dialog opens.



7. Select one of the following Job Execution Time options:

Run Now

Starts the backup job immediately.

Run On

Lets you specify the date and time when you want to run the backup job.

Note: For more information about saving jobs and job templates, see the *Administration Guide*.

8. Click OK.

You have successfully submitted a job to restore the data.

After submitting the restore job, you can monitor its progress by opening the Job Status Manager from the CA ARCserve Backup Home Page.

CA ARCserve Backup does not display a progress bar or percentage complete statistics in the Job Monitor window when restoring EMC CLARiiON IP4700, Celerra, and Procom NAS servers.

Note: Although all NAS servers use NDMP protocol, you should perform backups and restores to the same vendor's servers or compatible hosts.

More information:

[NAS Restore Job Limitations](#) (see page 42)

NAS Restore Job Limitations

NAS restore jobs have the following limitations:

- You can restore NAS server data to the original or to a different NAS server.
- You cannot restore to the CA ARCserve Backup server, because it is not an NDMP server.
- You cannot restore to the original location with a snapshot or checkpoint. These are read-only copies of the file system.
- For snapshot sessions, you must use the default restore options. Select the Do not create base directories option.
- You can specify a directory path for restore. When you manually specify a destination path on the restore Destination tab, you can browse to select a restore destination, or enter the path to the restore destination using in the following format:
`\\TEST\vol\vol0\destination`
- When restoring using extract-restore mode, the original backup path will be appended to the path specified in the restore destination tree.

- If the tape library or tape library unit and the NAS vendor support Direct Access Restore (DAR), and you are restoring files, the original path will only be appended to the user-specified destination path if the restore options designate that behavior.

DAR supports file restore only. If you choose to restore at least one folder, the restore reverts to scanning the session.

Note: Extract-restore mode scans the entire contents of a backup image to restore an item. Conversely, DAR traverses to the proper offset.

How You Manage Devices and Media

The Device Manager gives you information about storage devices that are connected to your network, the media in these devices, and the status of these devices. You can also use the Device Manager to manage the tape drives and media attached to NAS servers.

Adapter, Device, and Group Views

The Device Manager shows adapter, device, and group information about tape devices attached to the NAS servers. This information updates after you run Device Configuration to configure devices attached to NAS servers and then restart the Tape Engine.

Media Management

You can manage media by using the Device Manager to erase, format, and eject media from tape devices attached to NAS servers. The option also supports tape library units and all the media management functionality associated with it.

How You Manage the Database and Reports

CA ARCserve Backup stores backup job information for each backup job you run, including media and media device information, in the CA ARCserve Backup database. You can use this information to perform intelligent restores by keeping track of each file and directory that you backed up to a specific media. When you want to restore a specific file, the database determines where the file is stored. For more information about the database, see the *Administration Guide*.

The information stored in the database can be used for many types of reports. You can access these reports with the Report Manager. The Report Manager provides several functions to help manage both reports and logs. For more information about reports, see the *Administration Guide*.

How You Manage NAS Operations Using CA ARCserve Backup Utilities

CA ARCserve Backup offers several utilities that you can use to manage files. The utilities supported by the NDMP NAS Option include the Copy, Count, and Purge utilities. These utilities do not, however, use NDMP to complete their tasks. The NAS servers for these utilities are accessed through the Microsoft network tree.

Note: The Compare utility is not supported for sessions backed up using the option because the backup image is a third-party format.

Merge Utility

Using the Merge utility, you can merge information from media attached to the NAS server into the CA ARCserve Backup database. The information from the media is appended to the existing database files. You can also use the Merge utility to restore data from a CA ARCserve Backup host that is different from the host used to create the backup.

Media Assure & Scan Utility

You can scan the NDMP NAS Option media for information about previously backed-up sessions with the Media Assure & Scan utility.

NAS sessions, by contrast, are third-party backups with content that cannot be interpreted by the Media Assure & Scan utility. The operation is limited to reporting the session-level details of the NAS session. You can also view the results of the media scan in the Report Manager under the Activity Log listing or under the User Log listing (if an additional log file is created). In addition, you can select a specific session or scan the entire media for session-level details.

Appendix A: Using Network Appliance NAS Devices

This appendix includes information about how you can configure and use Network Appliance NAS devices with the NDMP NAS Option.

This section contains the following topics:

[Network Appliance Servers Configuration](#) (see page 45)

[Option Limitations on Network Appliance Devices](#) (see page 49)

Network Appliance Servers Configuration

Before the NDMP NAS Option can use a Network Appliance server, you must set certain parameters on the NAS server. You can specify most of these server settings from the NAS server's web-based Administrative Interface or from any Telnet console.

Access the Administrative Interface

You must configure parameters through the administrative interface of the Network Appliance server before the NDMP NAS option can use it. For more information about this, see the Network Appliance documentation.

User Accounts

The Network Appliance Data ONTAP operating system supports a system account named root. You can also configure optional administrative user accounts to control a server using either a Telnet session on the server console, or the server's web-access site.

Enable NDMP on Network Appliance Devices

Network Appliance requires that you enable NDMP on the NAS server. You can do this using either the web-based Administrative Interface or the Telnet session. For more information about enabling NDMP on the NAS server, see the Network Appliance documentation.

Configure Tape Library Device Names

For the NDMP NAS Option to be able to perform backup and restore operations on a Network Appliance server, the backup devices must be configured properly. Part of the configuration process involves identifying the logical device names of the attached tape library devices. You only need to do this if you have a tape library attached to the NAS server.

To configure tape library device names

1. Activate a Telnet session.
2. Enter the following command:

```
sysconfig -m
```

The name of the tape logical unit displays.

Configure the Drive Access Path

The drive access path is the path that Network Appliance servers use to communicate with NDMP drives.

To find and configure the drive access path

1. Use either a Telnet session or the URL: `http://<NAShostname>/na_admin` and connect to the server.

2. Enter the following command:

```
sysconfig -t
```

All the tape access path information appears.

```

ca_netapp> sysconfig -t

Tape drive <0b.1> Quantum DLT8000
rst01 - rewind device, format is: 85937 bpi 35 GB
nrst01 - no rewind device, format is: 85937 bpi 35 GB
urst01 - unload/reload device, format is: 85937 bpi 35 GB
rst0m - rewind device, format is: 85937 bpi 70 GB <w/comp>
nrst0m - no rewind device, format is: 85937 bpi 70 GB <w/comp>
urst0m - unload/reload device, format is: 85937 bpi 70 GB <w/comp>
rst0h - rewind device, format is: 98250 bpi 40 GB
nrst0h - no rewind device, format is: 98250 bpi 40 GB
urst0h - unload/reload device, format is: 98250 bpi 40 GB
rst0a - rewind device, format is: 98250 bpi 80 GB <w/comp>
nrst0a - no rewind device, format is: 98250 bpi 80 GB <w/comp>
urst0a - unload/reload device, format is: 98250 bpi 80 GB <w/comp>

Tape drive <0b.2> Quantum DLT8000
rst11 - rewind device, format is: 85937 bpi 35 GB
nrst11 - no rewind device, format is: 85937 bpi 35 GB
urst11 - unload/reload device, format is: 85937 bpi 35 GB
rst1m - rewind device, format is: 85937 bpi 70 GB <w/comp>
nrst1m - no rewind device, format is: 85937 bpi 70 GB <w/comp>
urst1m - unload/reload device, format is: 85937 bpi 70 GB <w/comp>
rst1h - rewind device, format is: 98250 bpi 40 GB
nrst1h - no rewind device, format is: 98250 bpi 40 GB
urst1h - unload/reload device, format is: 98250 bpi 40 GB
rst1a - rewind device, format is: 98250 bpi 80 GB <w/comp>
nrst1a - no rewind device, format is: 98250 bpi 80 GB <w/comp>
urst1a - unload/reload device, format is: 98250 bpi 80 GB <w/comp>
ca_netapp>

```

The tape logical device names listed by Network Appliance NAS servers use the following syntax:

```
xxxx#@
```

The following table explains the symbols and the corresponding values for the logical device names.

| Symbol | Value | Description |
|--------|---------|--|
| xxxx | nrst | A no-rewind sequential tape device. Opening and closing the device does not result in the device being automatically rewind. |
| | rst | A logical, sequential tape device that positions the actual device at the start of the tape during every open operation. |
| | urst | A logical, sequential tape device that loads and unloads the physical device in its open and close calls. |
| # | numeric | The device number. Device numbers start at 0. |
| @ | l | Low-density mode for tape writes. |
| | m | Medium-density mode for tape writes. |
| | h | High-density mode for tape writes. |

| Symbol | Value | Description |
|--------|-------|--|
| | a | High-density mode with hardware compression for tape writes. |

Snapshot Configuration

You can use the NAS configuration file, `nas.cfg`, to browse the Network Appliance server's file system and snapshots. The `nas.cfg` file contains mappings of nodes to volumes or logical devices and their associated subdirectories that you may want to back up.

The configuration file allows you to do partial volume backups using the Backup Manager. If your Network Appliance server supports NDMP Version 4, you can automatically browse subdirectories and files in a volume and you do not need to configure the `nas.cfg` file for partial volume backups.

When you back up data from a file system, the Network Appliance NAS server creates a snapshot of that data set so that the backup reflects a consistent view of the data at the time of executing the backup job. The data is then indirectly backed up from this snapshot.

When you configure the `nas.cfg` file, you can auto-browse below the snapshot folder in the Backup Manager's source tree. To do this, enter the full path to the snapshot file under the Network Appliance server name in the configuration file.

The following is an example of configuring the `Daily0` snapshot file:

```
/vol/vol0/snapshot/Daily.0
```

The following rules apply when you enter information in the NAS configuration file for a Network Appliance NAS server:

- Keep each entry on an individual line.
- Start with the host name of the NAS server.
- Add the volume and directory names on the next lines.
- Separate configurations by semicolons.
- Insert comments using the `#` symbol on individual lines or following any line entry.

When performing a recovery operation using the configuration file, you can make multiple selections per volume for a job. If the configuration file has multiple snapshot paths, you can select any multiple of snapshot paths, as you would for normal Network Appliance backups.

Example: Multiple-path Designations in a nas.cfg File

The following is an example of multiple-path designations in a nas.cfg file:

```
qa-server3
/vol/vol0/snapshot/Daily.0
/vol/vol0/snapshot/Monthly.1
/vol/vol0/snapshot/Weekly.3
;
```

Note: You must *not* restore snapshot backups to the original location, because they are read-only. You can, however, restore snapshot backups to an alternate location.

View the Network Appliance System Log

If you encounter problems with the device, you can view the system log to diagnose the problem. For more information about how you can view the system log, see the Network Appliance documentation.

Option Limitations on Network Appliance Devices

There are limitations when using a Network Appliance NAS device with the NDMP NAS Option. These limitations are based on the version of NDMP in use on the NAS server. Limitations include the following:

- For backups, the use of filters is limited to exclude file and directory entries.
- Filters are not supported on restores.
- Use of tape drives is limited to those that are supported by Network Appliance.
- Use of tape library units is limited to those supported by CA.
- Although Network Appliance NAS devices support Direct Access Restore (DAR), the option supports file restore only. If you choose to restore at least one folder, the restore reverts to scanning the session.

More information:

[Supported Backup Features](#) (see page 69)

[Supported Restore Features](#) (see page 72)

[Supported General Features](#) (see page 71)

Appendix B: Using EMC Celerra NAS Devices

This appendix includes information about how you can use EMC Celerra NAS devices with the NDMP NAS Option.

This section contains the following topics:

[How the EMC Celerra Host Data Mover Works](#) (see page 51)

[Configure the EMC Celerra Data Mover](#) (see page 52)

[Option Limitations on EMC Celerra Devices](#) (see page 54)

How the EMC Celerra Host Data Mover Works

The Celerra File Server supports up to a maximum of four simultaneous backup operations on an NDMP Host Data Mover. You can connect multiple Host Data Movers to the same tape library unit. The tape library unit can have multiple SCSI host connections. The tape library unit can also have fibre-channel connections.

Note: Do not connect the Celerra File Server Control Station to the tape library unit.

For each tape library unit SCSI connection, you can attach a maximum of two drives. You cannot daisy-chain any of the Host Data Mover storage system SCSI connections to the tape library unit.

If an NDMP Host Data Mover fails over to its standby, you must physically connect the Host Data Mover's tape library unit cable to the standby.

The ability to connect a Host Data Mover to a tape library unit depends on the number of SCSI ports on a Host Data Mover. Some older models of a Host Data Mover may have only two SCSI ports. These are required for storage system connectivity and redundancy. You should not use these storage system SCSI ports for tape library unit connections.

Configure the EMC Celerra Data Mover

Before you can use the NDMP NAS Option on an EMC Celerra NAS server, you must configure parameters on the NAS server. You can specify most of these settings from a Telnet console.

You can use Telnet to access the system by entering the following command:

```
c:/> telnet <IP address of the Celerra>
```

Enter the administrator name and password to log in.

User Accounts

You must set a user name and password for each NDMP Host Data Mover at the Celerra File Server Control Station. The user name and password must match those you will enter for the NDMP NAS Option.

Enable NDMP on EMC Celerra Devices

To access the NDMP Host Data Movers on an EMC Celerra server, you must first enable the server.

To enable a device through a Telnet session

1. Verify that each NDMP Host Data Mover can recognize its tape library units by entering the following command:

```
$server_devconfig <server_name>-probe-scsi-nondisks
```

Example: In the following example, the EMC Celerra server recognizes a two-drive library. The jbox value represents the tape library unit. In the next statements, tape represents the tape drives.

```
chain=1, scsi-1
```

```
symm_id=0 symm_type=0
```

```
tid/lun= 0/0 type= jbox info= ATL P1000 62200501.21
```

```
tid/lun= 4/0 type= tape info= QUANTUM DLT7000 245Fq_
```

```
tid/lun= 5/0 type= tape info= QUANTUM DLT7000 245Fq_
```

- Configure the devices with the Celerra File Server by adding them to the host database using the following command:

```
$server_devconfig <server_name>-create-scsi-nondisks
```

When a device is configured, the server responds with the following:

```
<server_name>: done
```

- Enter the following command to verify that the configuration is set:

```
$server_devconfig <server_name>-list-scsi-nondisks
```

The server responds with the following:

```
<server_name>:
```

```
Scsi Device Table
```

```
name addr type info
```

```
jbox1 c1t010 jbox ATL P1000 62200501.21
```

```
tape2 c1t410 tape QUANTUM DLT7000 245Fq_
```

```
tape3 c1t510 tape QUANTUM DLT7000 245Fq_
```

For more information about commands specific to the Celerra devices, see the EMC Celerra documentation.

Logical Device Names Detection

If you do not want the NDMP NAS Option to automatically detect the drives, you can manually assign them when you configure the option. This is recommended if you are configuring your tape library unit and server on a SAN.

You must follow the previous instructions about how to determine the logical device names to be used in NDMP NAS Option. From the example in the previous section, they appear as c1t010, c1t410, and c1t510.

nas.cfg File Configuration-EMC Celerra Devices

CA ARCserve Backup can automatically determine the volumes mounted on the EMC Celerra NAS servers. CA ARCserve Backup employs NDMP Version 3 to interact with the volumes. To employ partial volume backups, you must configure the nas.cfg file.

More information:

[File System Configuration](#) (see page 22)

Option Limitations on EMC Celerra Devices

The following are the limitations when you use the EMC Celerra NAS servers with the NDMP NAS option:

Note: Some of these limitations are based on the NDMP version used on the NAS server.

- For backups, the use of filters is limited to exclude file and directory entries.
- Filters are not supported on restores.
- You can use only the tape drives that are certified by EMC Celerra and the NDMP NAS Option.
- You can use only CA certified tape libraries.
- Although EMC Celerra NAS devices support Direct Access Restore (DAR), the option supports file restore only. If you choose to restore at least one folder, the restore reverts to scanning the session.
- The progress bar or percentage complete statistics in CA ARCserve Backup does not display during a backup.

More information:

[Supported Backup Features](#) (see page 69)

[Supported General Features](#) (see page 71)

[Supported Restore Features](#) (see page 72)

Appendix C: Using EMC CLARiiON IP4700 NAS Devices

This appendix describes how you can use EMC CLARiiON IP4700 NAS devices with the NDMP NAS Option.

This section contains the following topics:

[Configure the EMC CLARiiON IP4700 NAS Server](#) (see page 55)

[Option Limitations on EMC CLARiiON IP4700 Devices](#) (see page 58)

Configure the EMC CLARiiON IP4700 NAS Server

Before you can use the NDMP NAS Option with the EMC CLARiiON IP4700 NAS server, you must configure certain parameters on the server. Most of these parameters can be configured either from the web-based Administrative Interface or directly from the console attached to the IP4700 NAS server.

To access the web-based Administrative Interface, type the following URL in your web browser address bar:

http://<IP address of the IP4700>

Create User Accounts

To access the EMC CLARiiON IP4700 NAS server through the NDMP NAS Option, you must set the administrator password on the device. For the device to be accessible to the option, the administrator password must not be null or empty.

To configure the option, use the following information:

Username: Administrator

Password: <As set on the IP4700>

Enable NDMP on EMC CLARiiON IP4700 Devices

If the NDMP NAS Option is properly installed on the device, NDMP is enabled by default on EMC CLARiiON IP4700 NAS servers.

Logical Device Names

For NDMP NAS Option to be able to perform backup and restore operations on EMC CLARiiON IP4700 NAS servers, at least one server in the configuration must have tape drives or tape library units attached to it. You must specify the logical device names of the attached devices while configuring the NDMP NAS Option.

These logical device names are automatically assigned to the devices by IP4700 depending on the SCSI settings and the type of each device. The logical device names can also be determined from the Tape Drives menu of the web-based Administrative Interface.

Example: Logical Device Names

The following is an example of a typical Tape Drives information screen:

```
SPA (IP4700SPA) HP C1557A U709 /dev/c0b0t6d0
SPA (IP4700SPA) SCSI Device /dev/c0b0t6d1
SP-B (IP4700SPB) QUANTUM SuperDLT1 1717 /dev/c0b0t3d0
SP-B (IP4700SPB) QUANTUM SuperDLT1 1717 /dev/c0b0t3d0
SP-B (IP4700SPB) SCSI Device /dev/c0b0t5d0
```

Each line consists of three components:

- Storage processor
- Device description
- Logical device name

For example, consider the first line:

```
SPA (IP4700SPA) HP C1557A U709 /dev/c0b0t6d0
```

In this line:

```
Storage Processor = SP-A (IP4700SPA)
Device Description = HP C1557A U709
Logical Device Name = /dev/c0b0t6d0
```

The last part of the line has the logical device name (in this example, /dev/c0b0t6d0), which is used when you configure the NDMP NAS Option.

The second line in this example is:

```
SPA (IP4700SPA) SCSI Device /dev/c0b0t6d1
```

This has the device description SCSI Device. This device description indicates that this device is a tape library unit, not a regular tape drive. You can use the logical device name to configure the tape library unit on the NDMP NAS Option.

Network Configuration

When you configure the EMC CLARiiON IP4700 NAS server for the network, remember the following points:

- Assign a unique IP address to each of the storage processors in IP4700. Set up the IP address from the console attached to the server.
- Assign unique host names to each of the storage processors.
- Register the host names and IP addresses with the DNS server, so that they are accessible with the host name in any browser.

Note: If the host names are not properly configured in the DNS server and the storage processors are unable to resolve each other's names, backup and restore operations will not function properly.

If you have purchased the CIFS License from EMC, you should be able to access the volumes on the EMC CLARiiON IP4700 NAS server through Microsoft Windows. You must configure the domain name and WINS server on EMC CLARiiON IP4700 NAS server.

Volume Configuration

Volumes are configured in accordance with the requirements of the NAS device. For NDMP NAS Option to function correctly, you must configure at least one volume on the server.

Depending on the operating system from which the volumes are accessed, you must configure CIFS shared directories and NFS exports with appropriate level of access rights.

Tape Drives and Tape Libraries

You must connect at least one tape drive or a tape library unit with at least one tape drive to the SCSI bus of an IP4700 in the NAS server configuration. Use the Tape Drive menu from the web-based Administrative Interface to ensure that the device is properly connected and is recognized by the IP4700. All of the tape drives and the tape library units must have an entry in the list.

Option Limitations on EMC CLARiiON IP4700 Devices

The following are the limitations when you use the EMC CLARiiON IP4700 Celerra NAS servers with the NDMP NAS option:

Note: Some of these limitations are based on the NDMP version used on the NAS server.

- You can perform only full volume backups. However, you can perform restore operations on selected files or folders.
- Backup and restore operations do not support any kind of filtering.
- Snapshot functionality is not supported.
- Direct Access Restore (DAR) is not supported.
- The option does not display a progress bar or percentage complete statistics in the Job Monitor dialog.
- EMC CLARiiON IP4700 restore operations only support the option Create Entire Path from the Root on the Destination tab of the Restore Manager Global Options dialog.

In addition, the NDMP NAS Option cannot determine the volumes created on the IP4700 server. You must determine these volumes manually and configure the file `nas.cfg`. View the web-based Administrative Interface to determine the volume names that you must include in the `nas.cfg` file.

The following is an example of volume information:

| Name | Label | Size | Space Used | Status |
|------|-------|--------|------------|--------|
| A0 | | 264910 | 15723 | RDY |
| B0 | | 264910 | 15569 | RDY |

In this case, you must add the volume names A0 and B0 in the `nas.cfg` file.

More information:

[Supported Backup Features](#) (see page 69)

[Supported General Features](#) (see page 71)

[Supported Restore Features](#) (see page 72)

Appendix D: Using Procom NAS Devices

This appendix describes how you can use Procom NAS devices with the NDMP NAS Option.

This section contains the following topics:

[Procom Server Configuration](#) (see page 59)

[nas.cfg File Configuration-Procom Devices](#) (see page 61)

[Option Limitations on Procom Devices](#) (see page 63)

Procom Server Configuration

Before you can use the NDMP NAS Option with Procom devices, you must set certain parameters on the NAS server. You can specify most of these settings from the web-based Administrative Interface. Additionally, you must configure some settings directly on the LCD panel available on the Procom device.

To access the web-based Administrative Interface, type the following URL in your web browser address bar:

`http://<IP address of the Procom>`

User Accounts

To access a Procom server through the NDMP NAS Option, you must have a user account with administrator rights on the Procom server.

Logical Device Names

For the NDMP NAS Option to be able to perform backup and restore operations on a Procom server, you must configure the tape drives and tape library units attached to the server. This configuration differs depending on the firmware on the NAS server.

4.1 Firmware Configuration

For Procom servers with 4.1 firmware, you must specify the logical device names in the configuration file. You can determine these names from the System Log, accessible through the web-based interface.

Example: System Log for Procom Servers with 4.1 Firmware

The following example shows sample lines from this log:

```
109 12:27 |robotape isp1?061 type=8 desc=HP C1557A '  
109 12:27 |tape isp1t060 'HP C1557A '
```

The line with the word `robotape` indicates a tape library unit—not a regular tape device. Use the word after `robotape` to determine the logical device name for the tape library unit. In the example, it is `isp1?061`. To obtain the logical device name for the tape library unit, replace the `?` with `r`. Therefore, the logical device name is `isp1r061`.

The line with the word `tape` indicates a tape drive connected to the Procom server. The word after `tape` (`isp1t060` in this example) is the logical device name for the tape drive. There may be multiple entries in the log containing the word `tape`, if multiple tape drives were detected. In this situation, the log will contain one line for each detected tape drive.

4.2 Firmware Configuration

The NDMP NAS Option automatically detects connected tape devices attached to a Procom server with 4.2 firmware. Logical device names are automatically assigned to Procom servers, depending on the SCSI settings and type of each device.

Network Configuration

Network configuration involves assigning a unique IP address to the Procom server. If the DHCP server is available in the network, the Procom server can automatically obtain an IP address. You can determine the DHCP-assigned IP address by using the LCD panel on the Procom server.

You can manually assign an IP address to the server. You must use the LCD panel on the Procom server the first time you assign an IP address. You can configure additional parameters (for example, the DNS server and routing table) from the web-based interface.

You can access the Procom file system using either Microsoft Windows or UNIX. Each operating system has the following specific requirements to enable the access:

- For Microsoft Windows, assign the WINS server and domain name correctly, and create at least one share.
- For UNIX, create the appropriate exports.

Volume Configuration

Volumes are configured according to the requirements of the NAS server used. For the NDMP NAS Option to function correctly, you must configure at least one volume on the server serving as the data source of the backup operation.

NAS separates storage resources from network and application servers to simplify storage management and to provide file-level access to data, using standard protocols such as Network File System (NFS) or Common Internet File System (CIFS). A file system is located on the NAS server, and data is transferred to the client over standard network protocols. Depending on the operating system from which the volumes are to be accessed, CIFS shared directories and NFS exports must be configured with appropriate access rights.

Tape Drives and Tape Library Units

You must connect at least one tape drive or a tape library unit with at least one tape drive to the SCSI bus of the Procom NAS server targeted as the destination for the backup data. You can read the System Log to verify that all the tape drives are properly connected and correctly detected by the Procom server.

nas.cfg File Configuration-Procom Devices

You can use the NAS configuration file, `nas.cfg`, to virtually browse the file system and checkpoints. You can browse in the Backup Manager's and Restore Manager's respective source and destination trees. The `nas.cfg` file contains mappings of nodes to volumes or logical devices and their associated subdirectories that you may want to back up. This configuration file also allows you to perform partial volume backups from the Backup Manager.

The following rules apply when you add information in the NAS configuration file:

- Keep each entry on an individual line.
- Start with the host name of the NAS server.
- Add the volume and directory names on the next lines.
- Separate complete NAS server configurations by semicolons.
- Insert comments using the # symbol on individual lines or following any node or volume name.

For NAS servers, you can select only one path per file system for a backup job. You are encouraged to run multiple jobs if you have multiple, disparate sub-trees that need to be backed up under one file system.

Example: Multiple Path Designations in the nas.cfg File

The following is an example of multiple path designations in a nas.cfg file. You can select only one path under /c and one path under /d in the job.

```
/c/dir1  
/c/dir2  
/c/dir3  
/d/dir1  
/d/dir2  
/d/dir3  
;
```

Example: Multiple Checkpoint Destinations in a nas.cfg File

The following is an example of multiple checkpoint designations in a nas.cfg file:

```
qaprocom15  
/c.chkpt/daily  
/c.chkpt/hourly  
/c.chkpt/monthly  
/c/etc  
/c/etc/xyz  
;
```

Note: You must not restore checkpoint backups to the original location, because they are read-only. You can, however, restore checkpoint backups to an alternate location.

More information:

[File System Configuration](#) (see page 22)

Option Limitations on Procom Devices

The following are some of the limitations when you use a Procom server with the NDMP NAS Option:

- Restore jobs do not support any kind of filtering.
- Direct access restores are not supported.
- Backup jobs support Exclude filters on directory and file names only.
- The NDMP NAS Option does not display a progress bar or percentage complete statistic in the Job Monitor dialog.
- Procom restore operations only support the option Create Entire Path from the Root on the Destination tab of the Restore Manager Global Options dialog.

Some of these limitations arise because of the version of NDMP in use on the Procom server. If the Procom server firmware version is earlier than 4.02.10, the NDMP NAS Option cannot automatically determine the volumes created on the Procom server. You must determine the volume names and use the names to configure the `nas.cfg` file. These volume names can be determined from the web-based Administrative Interface.

To determine the names of the volumes, use the web-based Administrative Interface to display the File Volume Usage window. Volume names of file volumes available on the Procom server appear in the name column. Add these names to the `nas.cfg` file.

More information:

[Supported Backup Features](#) (see page 69)

[Supported General Features](#) (see page 71)

[Supported Restore Features](#) (see page 72)

Appendix E: Troubleshooting

This appendix describes how you can troubleshoot the CA ARCserve Backup NDMP NAS Option.

This section contains the following topics:

[Devices Do Not Display in the Device Manager](#) (see page 65)

[NAS Server Does Not Reinitialize](#) (see page 66)

[Debugging is Not Enabled on the NAS Server](#) (see page 66)

[Cannot Access the Procom System Log and Environmental Log](#) (see page 67)

[Unable to Restore QTree Information Using the NDMP NAS Option](#) (see page 68)

Devices Do Not Display in the Device Manager

Valid on Windows

Symptom:

NAS servers or tape libraries attached to a NAS server do not display in the Device Manager. How can I correct this problem?

Solution:

There are two probable causes:

- The server name, user name, or user password is incorrect or not configured.
- The device may be in use.

If the devices do not appear in the Device Manager, verify the following:

- The name of the server, with the corresponding user name and password were configured correctly using the CA ARCserve Backup Device Configuration dialog. For more information about configuring a NAS device, see [Configure NAS Devices](#) (see page 25).
- The tape drive is not already opened and in use by another NDMP session (only one connection is allowed at one time). Check to see if there are any leading or trailing spaces in the logical device name strings.
- If you configured the NAS server using a hostname, rather than an IP address, you must use the Backup Manager to configure the option to use the NAS server's hostname.

NAS Server Does Not Reinitialize

Valid on Windows

Symptom:

The NAS server does not reinitialize.

Solution:

You must manually reinitialize the NAS server.

To reinitialize the NAS server

1. Stop all of the sessions on the Network Appliance NAS server by connecting to the server using Telnet and entering the following command:
`ndmpd-killall`
2. Restart the NDMP NAS Option universal agent service.
3. [Optional] Delete the device references under the following registry key:
`Computer Associates\CA ARCserve\Base\Tape Engine`
4. If you are reconfiguring tape library units, run Device Configuration.
5. Restart the Tape Engine using the CA ARCserve Backup Server Admin.

Debugging is Not Enabled on the NAS Server

Valid on Windows

Symptom:

Debugging is not enabled on the NAS server.

Solution:

You must manually enable debugging on the NAS server.

To enable debugging on the NDMP server

1. Log in to the remote NAS server using Telnet and enter the following command:

```
ndmpd debug 50
```

Note: The number 50 indicates the level of debugging information.

The debugging information is written to a file that can be found in the root directory of the volume. The format of the file name is:

```
ndmpd.####
```

where #### represents the date and time of the log.

Cannot Access the Procom System Log and Environmental Log

Valid on Windows

Symptom:

Cannot access the Procom System Log and Environmental Log.

Solution:

You can access the Procom System Log and Environment Log by opening the web-based Administrative Interface and selecting the Monitoring and Notification option.

To view the Procom System Log and Environmental Log

1. Open a browser window and enter the following:

```
http://<machine>>
```

where <machine> is the URL of the Procom server.

2. Log in to the server.
3. Select Monitoring and Notification, View System Events, and Display Log.
The System Log and Environmental Log open.

Unable to Restore QTree Information Using the NDMP NAS Option

Valid on Windows

Symptom:

CA ARCserve Backup cannot restore Qtree information when I select only the folder that represents the Qtree information from the backup session, and the entire volume is selected.

Solution:

You can use any of the following solutions:

- Restore the entire volume from the backup sessions with the entire volume selected.
- Set the following registry key value to restore the qtree information properly.

Key:

HKEY_LOCAL_MACHINE\SOFTWARE\ComputerAssociates\CA ARCserve
Backup\NASAgent\Parameters

Value Name:

bForceSelectiveFileRestore

Type:

DWORD

Value:

1 (Default is 0)

Note: After you set the above registry key, CA ARCserve Backup records the following message in the Activity Log when the restore job runs:

At least one of the source files or directories selected does not support direct positioning, using Selective file restore instead.

Appendix F: Feature Support Summary

This appendix presents the supported and unsupported features of the NDMP NAS Option for Network Appliance, EMC, and Procom NAS servers. The backup and restore tables are organized by a dialog tab and the features available in each tab. "All" indicates that everything on that dialog tab is either supported or unsupported.

This section contains the following topics:

- [Supported Backup Features](#) (see page 69)
- [Supported General Features](#) (see page 71)
- [Supported Restore Features](#) (see page 72)
- [Support for NDMP V4](#) (see page 72)
- [Certified NAS Devices](#) (see page 73)

Supported Backup Features

The following table lists the backup features for the NAS servers that the NDMP NAS Option supports:

Key:

- S—Supported options
- N—Unsupported options
- W—Supported on Windows platforms only

| Tab | Feature | Network Appliance | EMC Celerra | EMC IP4700 | Procom |
|--------------|---|-------------------|-------------|------------|--------|
| Backup Media | | | | | |
| | Options for First Backup Media (All) | S | W | W | W |
| | Options for Additional Backup Media (All) | S | W | W | W |
| | Compression/Encryption Password (All) | N | N | N | N |
| Verification | (All) | N | N | N | N |
| Retry | (All) | N | N | N | N |

| Tab | Feature | Network Appliance | EMC Celerra | EMC IP4700 | Procom |
|----------------------------|--|--------------------------|--------------------|-------------------|---------------|
| Operation | Delete Files After Backup/Disable File Estimate/Calculate and Store CRC on the Backup Media/Back up of the CA ARCserve Backup database | N | N | N | N |
| | Eject Backup Media upon Completion | S | W | W | W |
| | Database | S | W | W | W |
| Pre/Post | (All) | S | W | W | W |
| Job Log | (All) | S | W | W | W |
| Virus | (All) | N | N | N | N |
| Replication | (All) | N | N | N | N |
| Alert | (All) | S | W | W | W |
| Volume Shadow Copy Service | | | | | |
| | (All) | N | N | N | N |
| Media Exporting | | | | | |
| | Option | N | N | N | N |
| | Media Option | S | W | W | W |
| Advanced | (All) | N | N | N | N |
| Filter | Exclude File and Directory Pattern | S | N | N | W |
| | Include File and Directory Pattern | N | N | N | N |
| | All Other Filters | N | N | N | N |

Supported General Features

The following table lists the major options supported by the NDMP NAS Option.

Key:

- S—Supported options
- N—Unsupported options
- W—Supported on Windows platforms only

| Description | Network Appliance | EMC Celerra | EMC IP4700 | Procom |
|----------------------------------|--------------------------|--------------------|-------------------|---------------|
| Rotation Backup | S | W | N | W |
| GFS Rotation Backup | S | W | W | W |
| Custom Incremental Backup | N | W | N | W |
| Custom Differential Backup | N | W | W | W |
| Volume-Level Backup | S | W | W | W |
| Directory and File-Level Backup | S | W | N | W |
| Volume-Level Restore | S | W | W | W |
| Directory and File-Level Restore | S | W | W | W |
| Snapshot/Checkpoint | S | N | N | W |
| Direct-Access Restore | S | W | N | N |

Supported Restore Features

The following table lists the restore features for the NAS servers that the NDMP NAS Option supports.

Key:

- S— Supported options
- N— Unsupported options
- W— Supported on Windows platforms only

| Tab | Feature | Network Appliance | EMC Celerra | EMC IP4700 | Procom |
|--------------|---|-------------------|-------------|------------|--------|
| Backup Media | (All) | S | W | W | W |
| Destination | Directory Structure | S | W | N | N |
| | File Conflict Resolutions | N | N | N | N |
| Operation | Restore and Preserve Directory Attributes / Restore Registry and Event Logs | N | N | N | N |
| | Database | S | W | W | W |
| Pre/Post | (All) | S | W | W | W |
| Job Log | (All) | S | W | W | W |
| Virus | (All) | N | N | N | N |
| Alert | (All) | S | W | W | W |
| Filter | (All) | N | N | N | N |

Support for NDMP V4

The CA ARCserve Backup NDMP NAS Option supports NDMP version 4 in addition to NDMP version 3.

Note: The NDMP NAS Option no longer supports NDMP version 2. If you are using NDMP version 2, contact [CA Technical Support](#) before you upgrade to the latest version of CA ARCserve Backup for Windows.

Certified NAS Devices

The following versions of NAS devices are certified for this release:

- For Network Appliance devices:
 - ONTAP Version 7.1
 - OnStor (V4)
 - Procom (V3)
 - EMC IP4700 (V3)

We recommend that you configure the filer to allow NDMP V4 communication by executing the following command on the filer console:

```
ndmpdversion 4
```

In addition, ensure that all the filers are configured to 4.

- For EMC (Celerra) devices:
 - DART version 5.5
 - NAS Server model: Celerra

DART 5.5 now supports exclude filters and DAR options at Job Level only. For more information on configuring EMC Celerra devices to support files and folder filters, see the EMC Celerra documentation.

To use Dynamic Device Sharing (DDS), set the value of `ndmp.scsiReserve` to 0. The default value of `ndmp.v4oldTapeCompatible` should be set to 1.

We recommend that you configure data movers to support NDMP V4 communication by setting the `maxProtocolVersion` parameter to 4. In addition, ensure that all data movers are configured to 4.

Index

B

backing up data

- add a NAS server • 32
- archive data • 37
- back up a NAS server • 34
- options • 31
- scheduling a backup • 34

C

checkpoints • 24, 32, 42, 61

configuring user accounts

- EMC Celerra devices • 52
- EMC CLARiiON IP4700 devices • 55
- Network Appliance devices • 45
- Procom devices • 59

D

device configuration • 25

dynamic device sharing

- about • 18
- configuring • 28

E

EMC Celerra devices

- configuring user accounts • 52
- enabling NDMP • 52
- limitations • 54
- logical device names • 53
- NAS configuration • 52
- nas.cfg configuration • 53

EMC CLARiiON IP4700 devices

- configuring user accounts • 55
- enabling NDMP • 55
- limitations • 58
- logical device names • 46, 56
- NAS configuration • 55
- network configuration • 57
- tape drives and tape libraries • 57
- volume configuration • 57

F

features

- local and three-way backup and restores • 11
- NAS changer support • 11

push technology • 11

real-time remote browsing • 11

I

installation

- prerequisites • 21
- procedure • 25

L

local NDMP backup • 14

local NDMP restore • 16

logical device names

- EMC Celerra devices • 53
- EMC CLARiiON IP4700 devices • 46, 56
- Network Appliance devices • 46
- Procom devices • 59

logs • 20

M

media assure & scan utility • 44

merge utility • 44

N

NAS configuration

- add a NAS server • 32
- EMC Celerra devices • 52
- EMC CLARiiON IP4700 devices • 55
- Network Appliance devices • 45
- Procom devices • 59

nas.cfg configuration file • 22, 23, 32, 48, 53, 58, 61, 63

Network Appliance devices

- administrative interface, accessing • 45
- configuring user accounts • 45
- limitations • 49
- snapshots • 48

P

Procom devices

- configuring user accounts • 59
- limitations • 63
- logical device names • 59
- NAS configuration • 59
- network configuration • 60
- tape drives and tape libraries • 61

troubleshooting • 67
volume configuration • 61

R

restoring data
 options • 38
 restore by session • 39
 restore by tree • 38
 restore destination tab • 42

S

snapshot • 24, 32, 48
snapshot management extensions • 23

T

tape drives and tape libraries
 EMC CLARiiON IP4700 devices • 57
 Network Appliance devices • 46
 Procom devices • 61
Tape Engine Debug Log • 20, 28
three-way NDMP backup • 15
three-way NDMP restore • 16
troubleshooting, general • 65, 66

V

volume configuration
 EMC CLARiiON IP4700 devices • 57
 Procom devices • 61